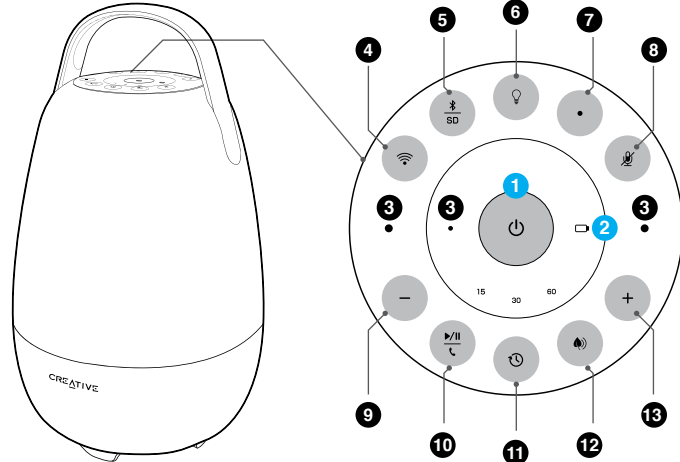
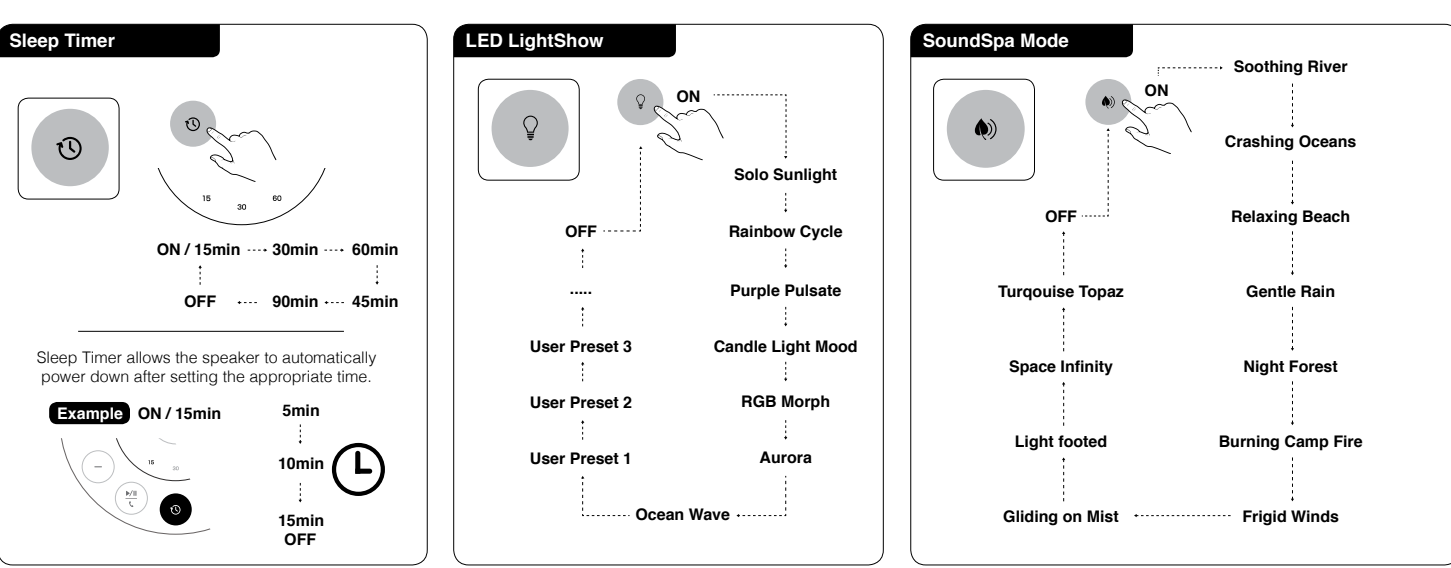
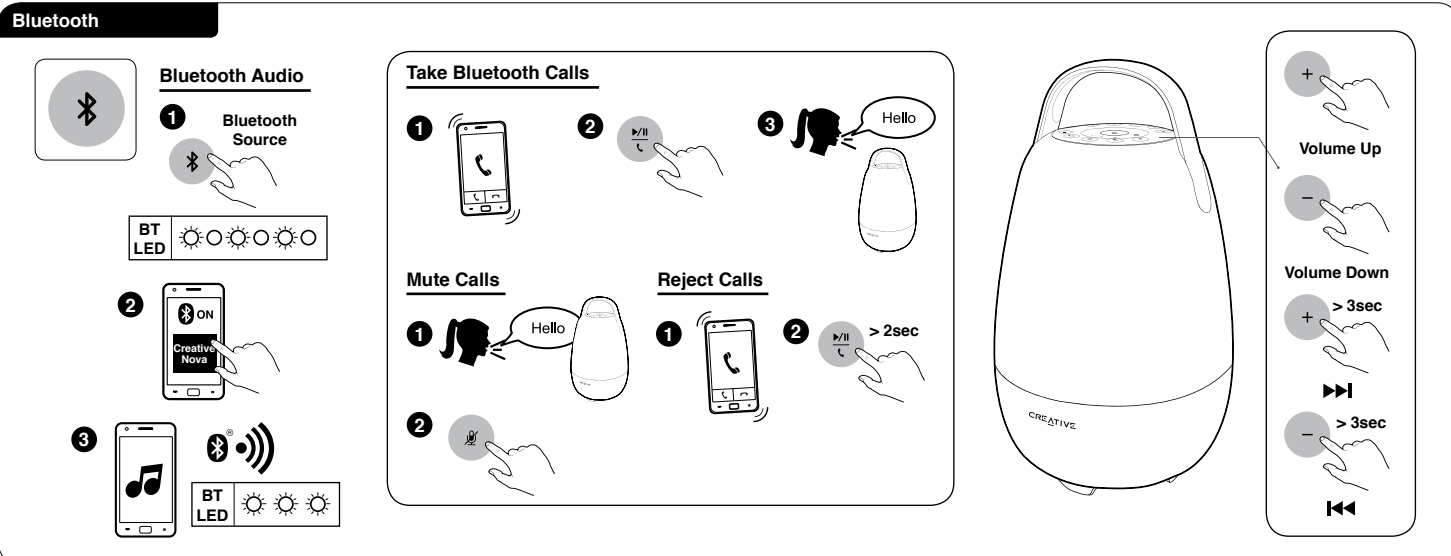
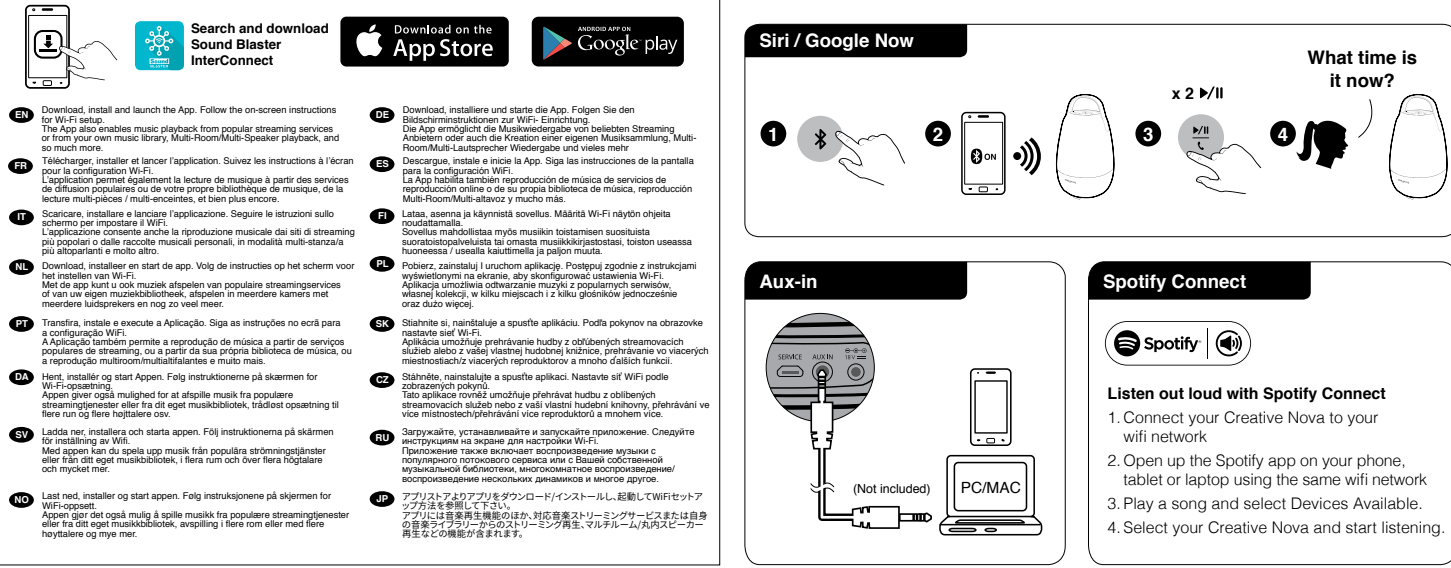
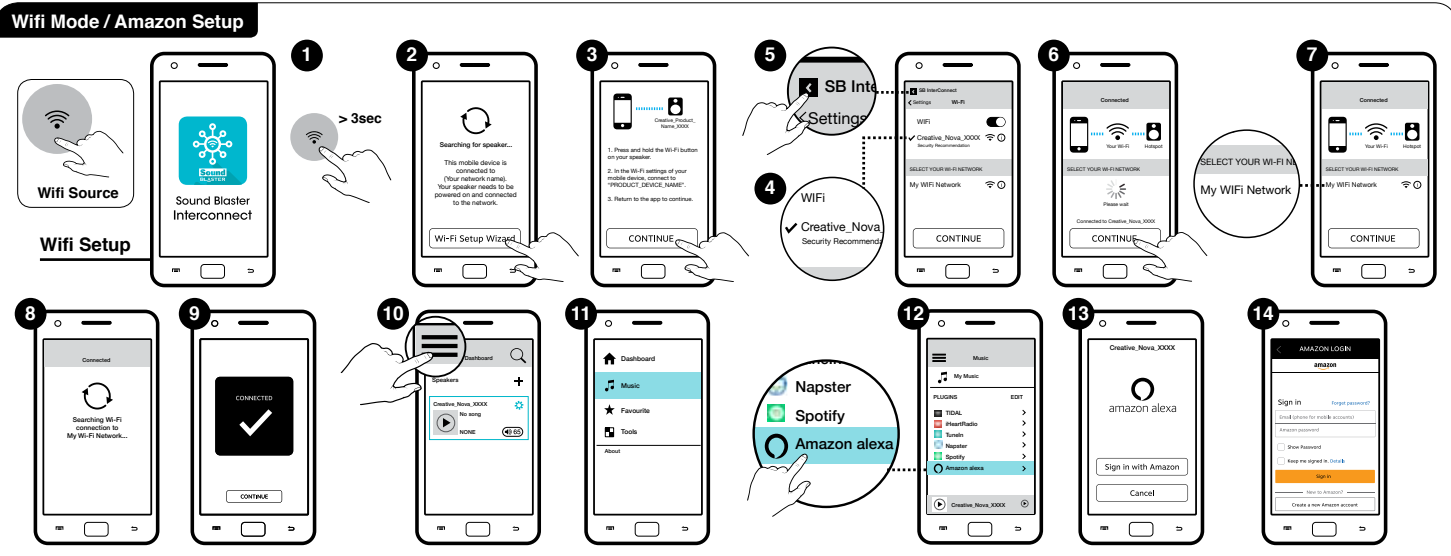
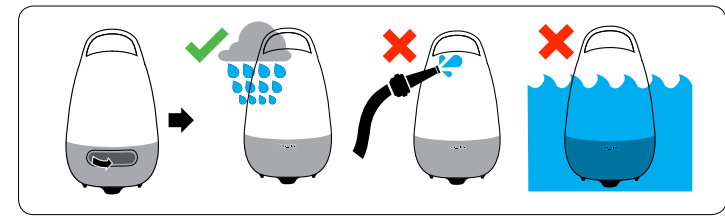
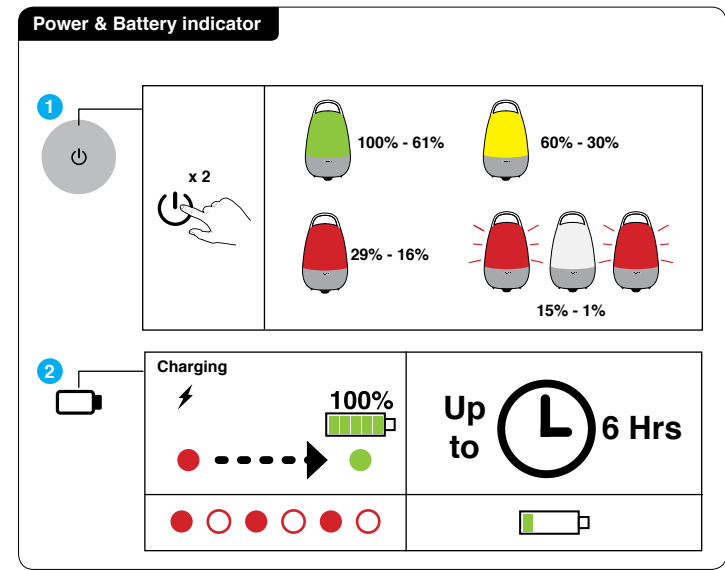
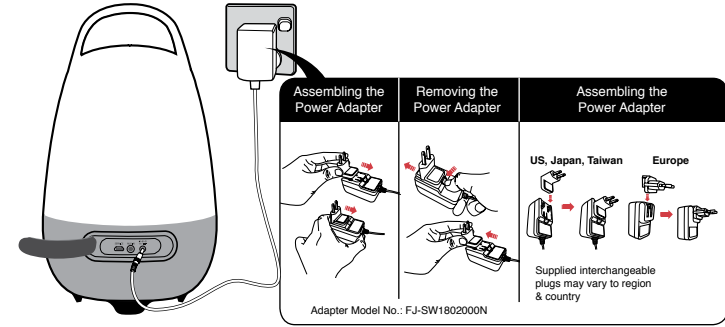
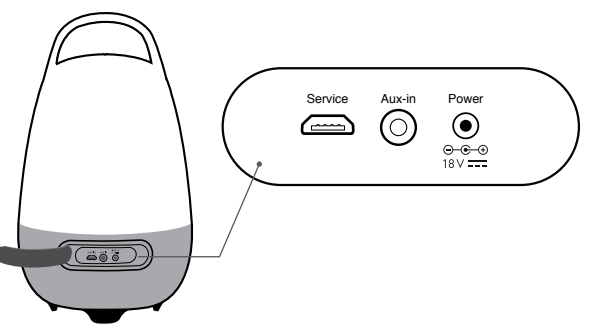


Overview



- 1 Power
- 2 Battery / Charging Indicator
- 3 Microphone
- 4 Wifi Mode
- 5 Bluetooth
- 6 LED Lightshow
- 7 Amazon Alexa™ action**
- 8 Microphone Mute/Unmute
- 9 Volume down/⏮
- 10 Play/ Pause/ Answer call/ Reject call
- 11 Sleep Timer
- 12 SoundSpa Mode
- 13 Volume up/⏭



EN Download, install and launch the App. Follow the on-screen instructions for Wi-Fi setup. The App also enables music playback from popular streaming services or from your own music library, Multi-Room/Multi-Speaker playback, and so much more.

FR Téléchargez, installez et lancez l'application. Suivez les instructions à l'écran pour la configuration Wi-Fi. L'application permet également la lecture de musique à partir des services de diffusion populaires ou de votre propre bibliothèque de musique, de la lecture multi-pièces / multi-enceintes, et bien plus encore.

IT Scaricare, installare e lanciare l'applicazione. Seguire le istruzioni sullo schermo per impostare il Wi-Fi. L'applicazione consente anche la riproduzione musicale dai siti di streaming più popolari o dalle raccolte musicali personali, in modalità multi-stanza/ a altoparlanti e molto altro.

NL Download, installeer en start de app. Volg de instructies op het scherm voor het instellen van Wi-Fi. Met de app kunt u ook muziek afspelen van populaire streamingdiensten of van uw eigen muziekbibliotheek, afspelen in meerdere kamers met meerdere luidsprekers en nog zo veel meer.

PT Transfira, instale e execute a Aplicação. Siga as instruções no ecrã para a configuração Wi-Fi. A Aplicação também permite a reprodução de música a partir de serviços populares de streaming, ou a partir da sua própria biblioteca de música, ou a reprodução multiroom/multi-altavozes e muito mais.

DA Hent, installer og start Appen. Følg instruktionerne på skærmen for Wi-Fi-opstilling. Appen giver også mulighed for at afspille musik fra populære streamingtjenester eller fra dit eget musikbibliotek, trådløst opsætning til flere rum og flere højttalere osv.

SV Ladda ner, installera och starta appen. Följ instruktionerna på skärmen för inställning av Wifi. Med appen kan du spela upp musik från populära strömningstjänster eller från ditt eget musikbibliotek, i flera rum och över flera högtalare och mycket mer.

NO Last ned, installer og start appen. Følg instruksjonene på skjermen for Wi-Fi-opsett. Appen gjør det også mulig å spille musikk fra populære strømingstjenester eller fra ditt eget musikkbibliotek, nesplling i flere rom eller med flere høyttalere og mye mer.

DE Download, installieren und starte die App. Folgen Sie den Bildschirmstrukturen zur Wi-Fi-Einrichtung. Die App ermöglicht die Musikwiedergabe von beliebigen Streaming Anbietern oder auch die Wiedergabe eigener Musiksammlungen, Multi-Room/Multi-Lautsprecher Wiedergabe und vieles mehr.

ES Descargue, instale e inicie la App. Siga las instrucciones de la pantalla para la configuración Wi-Fi. La App habilita también reproducción de música de servicios de reproducción online o de su propia biblioteca de música, reproducción Multi-Room/Multi-altavoz y mucho más.

FI Lataa, asenna ja käynnistä sovellus. Määritä Wi-Fi näytön ohjeita noudattamalla. Sovellus mahdollistaa myös musiikin toistamisen suositusta suoratoistopalveluista tai omasta musiikkikirjastosta, toiston useassa huoneessa / usealla lausuntella ja paljon muuta.

PL Pobierz, zainstaluj i uruchom aplikację. Postępuj zgodnie z instrukcjami wyświetlonymi na ekranie, aby skonfigurować ustawienia Wi-Fi. Aplikacja umożliwia odtwarzanie muzyki z popularnych serwisów, własnej kolekcji, w kilku miejscach i z kilku głośników jednocześnie oraz dużo więcej.

SK Stiahnite si, nainštalujte a spusťte aplikáciu. Podľa pokynov na obrazovke nastavte sieť Wi-Fi. Aplikácia umožňuje prehrávanie hudby z obľúbených streamovacích služieb alebo z vašej vlastnej hudobnej knižnice, prehrávanie vo viacerých miestnostiachz viacerých reproduktorov a mnoho ďalších funkcií.

CZ Stáhněte, nainstalujte a spusťte aplikaci. Nastavte síť Wi-Fi podle zobrazených pokynů. Tato aplikace rovněž umožňuje přehrávat hudbu z oblíbených streamovacích služeb nebo z vaší vlastní hudební knihovny, přehrávání ve více místnostech/přehrávání více reproduktory a mnoho dalších funkcí.

RU Загрузите, установите и запустите приложение. Следуйте инструкциям на экране для настройки Wi-Fi. Приложение также включает воспроизведение музыки с популярных потоковых сервисов или с Вашей собственной музыкальной библиотеки, многокомнатное воспроизведение/воспроизведение нескольких динамиков и многое другое.

JP アプリストアのアプリをダウンロード/インストールし、起動しWi-Fiセットアップ方法を参照してください。アプリには音楽再生機能のほか、対応音楽ストリーミングサービスまたは自身の音楽ライブラリからのストリーミング再生、マルチルーム/複数スピーカー再生などの機能が含まれます。

Additional Safety and Regulatory information for Creative Nova

Regulatory Information

The following sections contain notices for various countries:

CAUTION: This product is intended for use with FCC/CE certified computer equipment. Please check the equipment operating/installation manual and/or with the equipment manufacturer to verify/confirm if your equipment is suitable prior to the installation or use of the product.

Federal Communication Commission (FCC) Interference Statement Notice for USA FCC Part 15:

This equipment has been tested and found to comply with the limits for a Class B digital device, pursuant to Part 15 of the FCC Rules. These limits are designed to provide reasonable protection against harmful interference in a residential installation. This equipment generates, uses and can radiate radio frequency energy and, if not installed and used in accordance with the instructions, may cause harmful interference to radio communications. However, there is no guarantee that interference will not occur in a particular installation. If this equipment does cause harmful interference to radio or television reception, which can be determined by turning the equipment off and on, the user is encouraged to try to correct the interference by one or more of the following measures:

- Reorient or relocate the receiving antenna.
- Increase the separation between the equipment and receiver.
- Connect the equipment into an outlet on a circuit different from that to which the receiver is connected.
- Consult the dealer or an experienced radio/TV technician for help.

This device complies with part 15 of the FCC Rules. Operation is subject to the following two conditions:

1. This device may not cause harmful interference, and
2. This device must accept any interference received, including interference that may cause undesired operation.

CAUTION: To comply with the limits of the Class B digital device, pursuant to Part 15 of the FCC Rules, this device must be installed with computer equipment certified to comply with Class B limits.

All cables used to connect to the computer and peripherals must be shielded and grounded. Operation with non-certified computers or non-shielded cables may result in interference to radio or television reception.

MODIFICATION: Any changes or modifications not expressly approved by the grantee of this device could void the user's authority to operate the device.

Federal Communication Commission (FCC) Radiation Exposure Statement

This equipment complies with FCC radiation exposure limits set forth for an uncontrolled environment. This transmitter must not be co-located or operating in conjunction with any other antenna or transmitter.

SUPPLIER'S DECLARATION OF CONFORMITY

According CFR Title 47 §2.1077

Manufacturer's Name: **Creative Labs, Inc.**
Manufacturer's Address: **1901 McCarthy Boulevard
Milpitas, CA. 95035
Tel: (408)428-6600**

declares under its sole responsibility that the product

Trade Name: **Creative**
Model Numbers: **MF8285**
Product Name: **Creative Nova**

has been tested according to the FCC / CISPR22 requirement for Class B devices and found compliant with the following standards:

EMI/EMC: ANSI C63.4 & C63.10, FCC Part 15 Subpart B& C

This device complies with part 15 of the FCC Rules.

Operation is subject to the following two conditions:

- (1) This device may not cause harmful interference, and
- (2) this device must accept any interference received, including Interference that may cause undesirable operation.

Supplementary Information: **Thinh Bui
Compliance Manager
Creative Labs, Inc.
5th July, 2018**

充電式電池リサイクルについてのご注意



Li-ion

クリエイティブの一部製品にはリチウムイオン充電電池が使用されています。

リチウムイオン充電電池はリサイクル可能な資源です。

- ・ クリエイティブ製品に内蔵されている充電電池をリサイクルするには、充電電池の取り外しはお客様ご自身では行わないで下さい。リサイクルの方法などのお問い合わせは、クリエイティブメディア株式会社のカスタマーサービスセンター <http://jp.creative.com/support/contact/> (日本語のみ) にご相談下さい。
- ・ 取り外しが可能なクリエイティブ製品の充電電池をリサイクルするには –



注意事項

安全の為、電力を完全に使い切ってから充電電池を取り外して下さい。

- ・ 安全の為、充電電池の金属端子部分にはセロハンテープなどの絶縁テープを貼って下さい。
- ・ 安全策を講じた使用済み充電電池は、充電式電池のリサイクル協力店へお持ち下さい。

充電式電池の回収/リサイクルおよびリサイクル協力店については、中間責任法人JBRCのホームページ <http://www.jbrc.com/> を参照して下さい。

Notice for Singapore

Complies with
IMDA Standards
DA107311