

Shenzhen Aiteno communication equipment Co., LTD

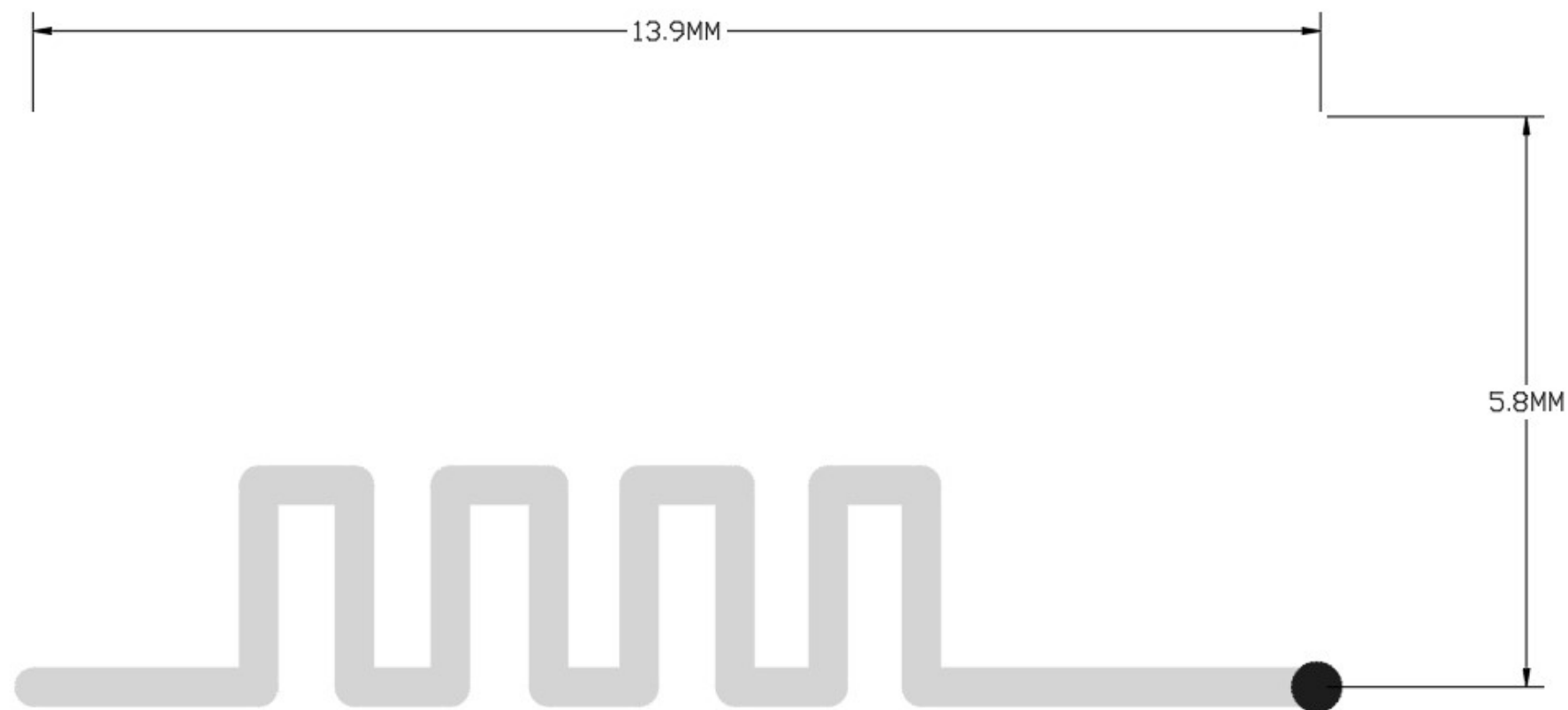
Antenna test report

| | | | | | |
|-------------------|---------------------|---------|-----|------|-----------|
| client: | Chuangxinwei | project | 404 | date | 2024.1.29 |
| frequency band | 2.4G-2.48G | | | | |
| Report version | V1.0 | | | | |
| antenna structure | PCB onboard antenna | | | | |

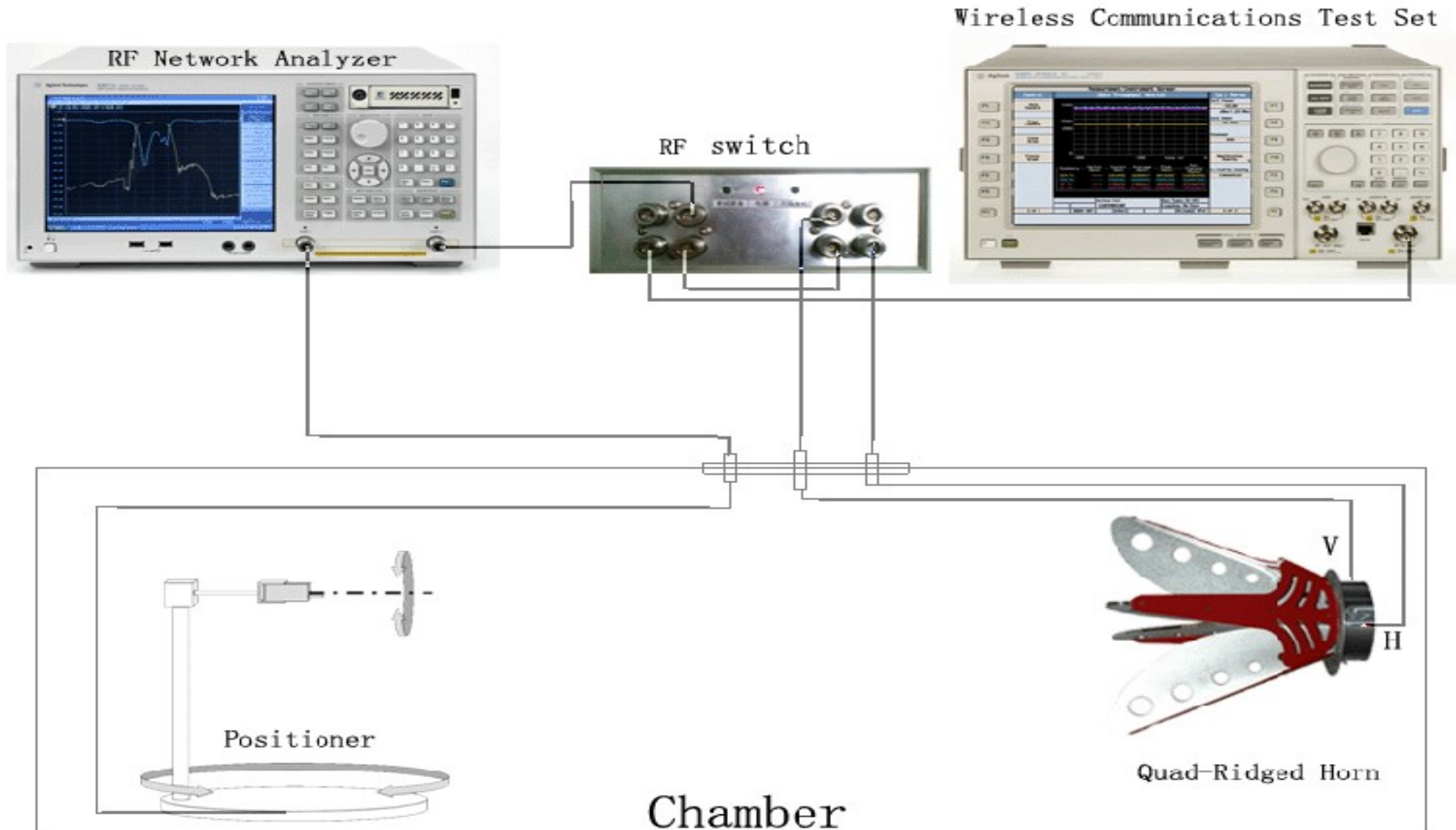
address: 504-505 Meisheng Chuanguo Xia Valley, Longchang
Road, Xin 'an Street, Bao 'an District, Shenzhen

telephone: 0755-29308863 fax: 0755-29308861

Antenna size



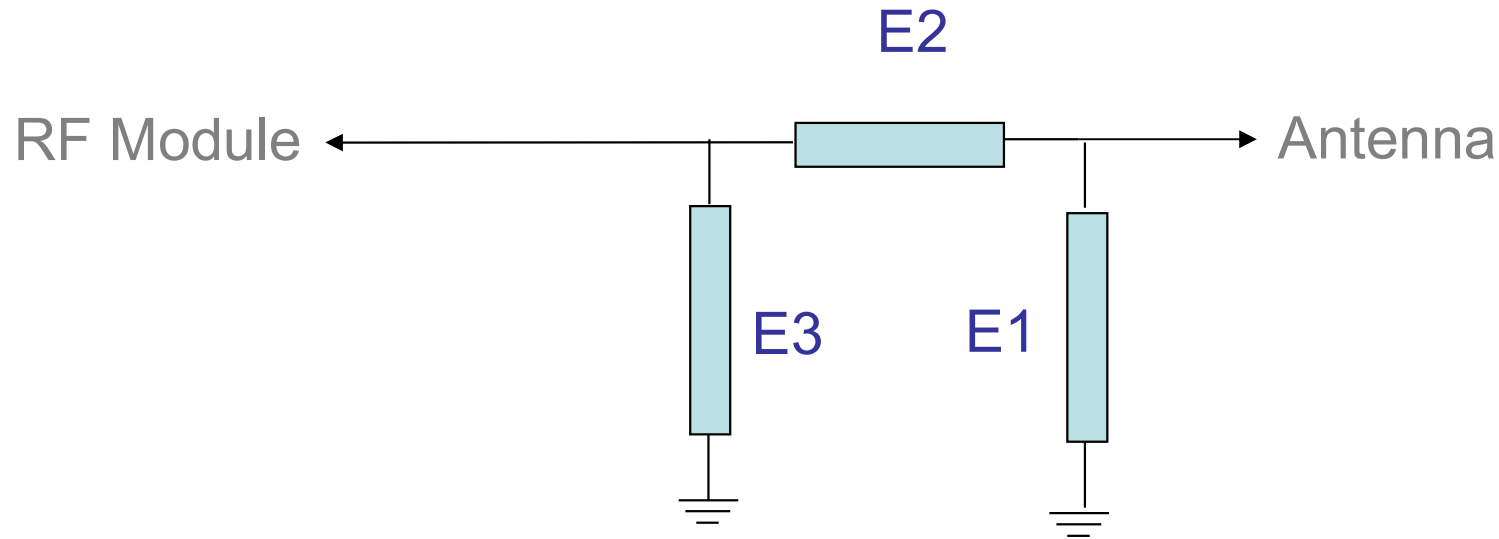
TEST SYSTEM



directory

- 1、 matching circuit
- 2、 Passive test data
- 3、 OTA test data

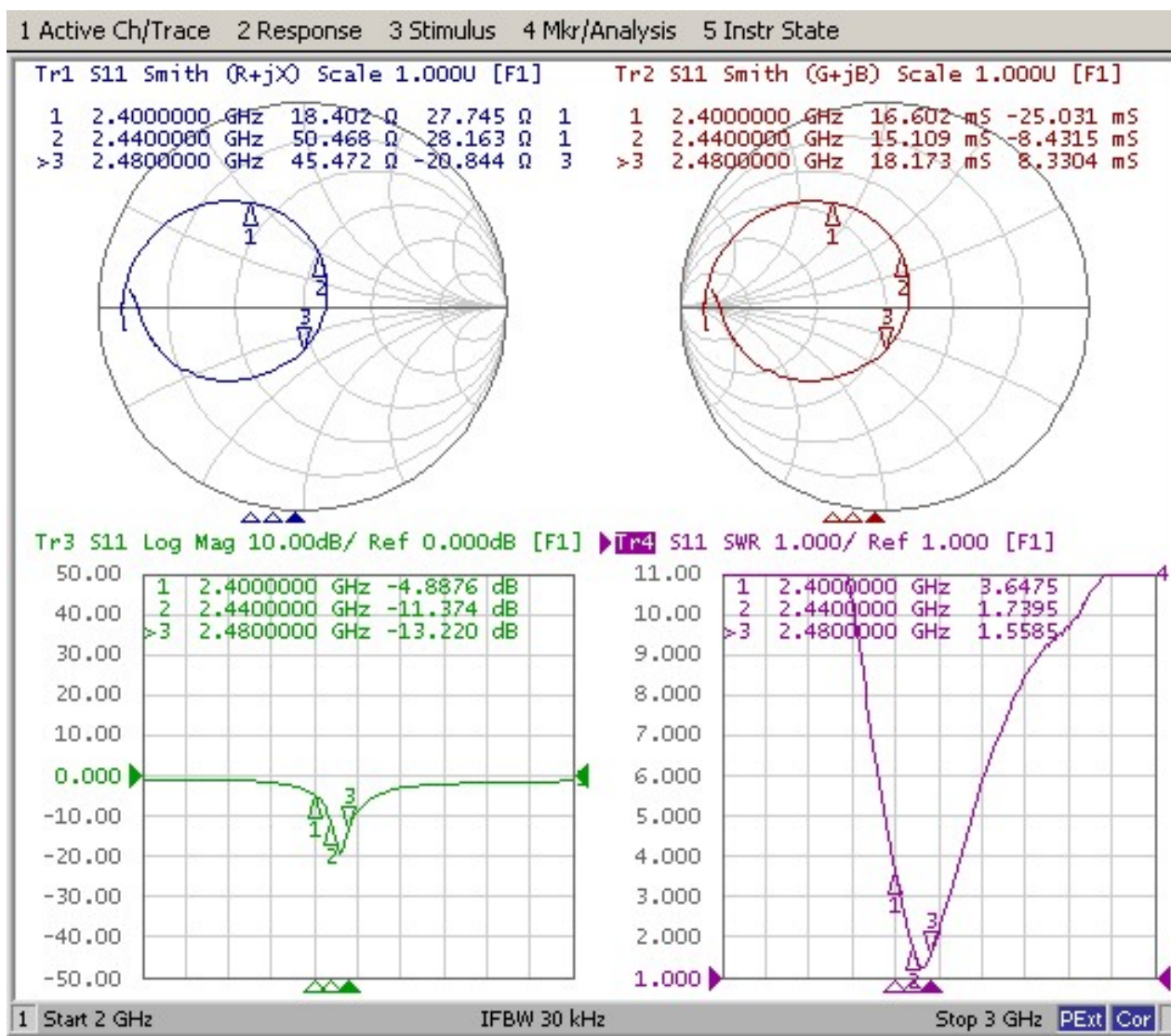
matching circuit



| Element | Value |
|----------|-------|
| E1(0201) | NC |
| E2(0201) | 1.5nH |
| E3(0201) | 2.4pF |
| | |

2 Passive test data

2.1 S11 Parameter

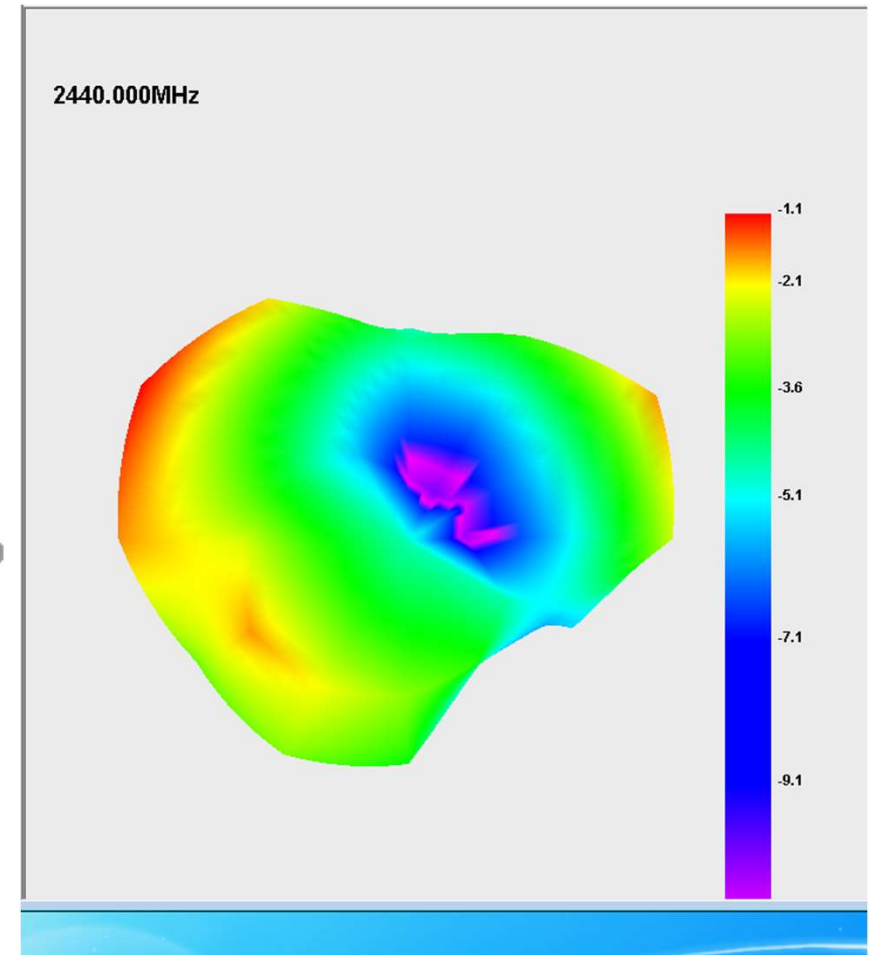
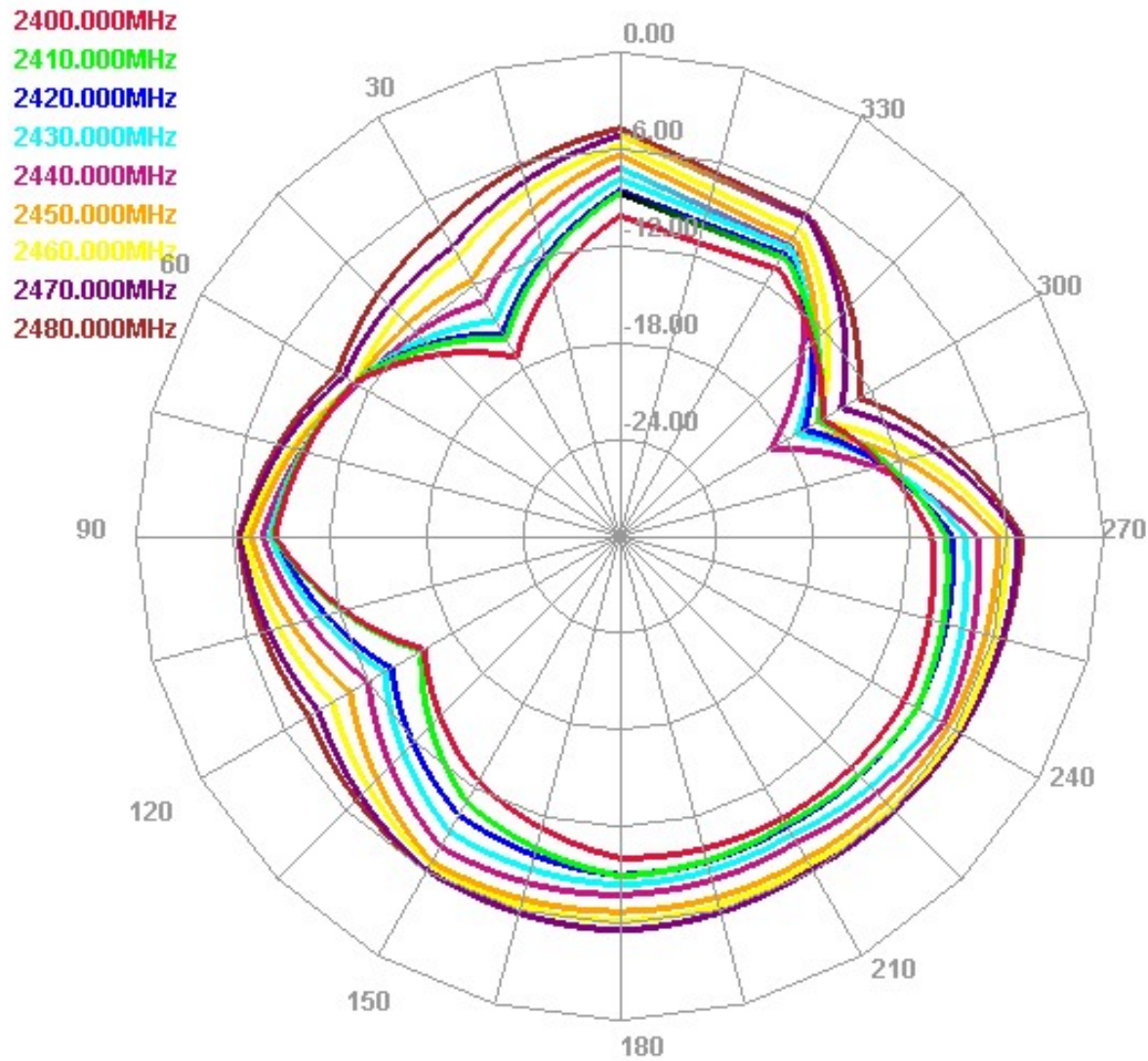


2.2 Gain & Efficiency

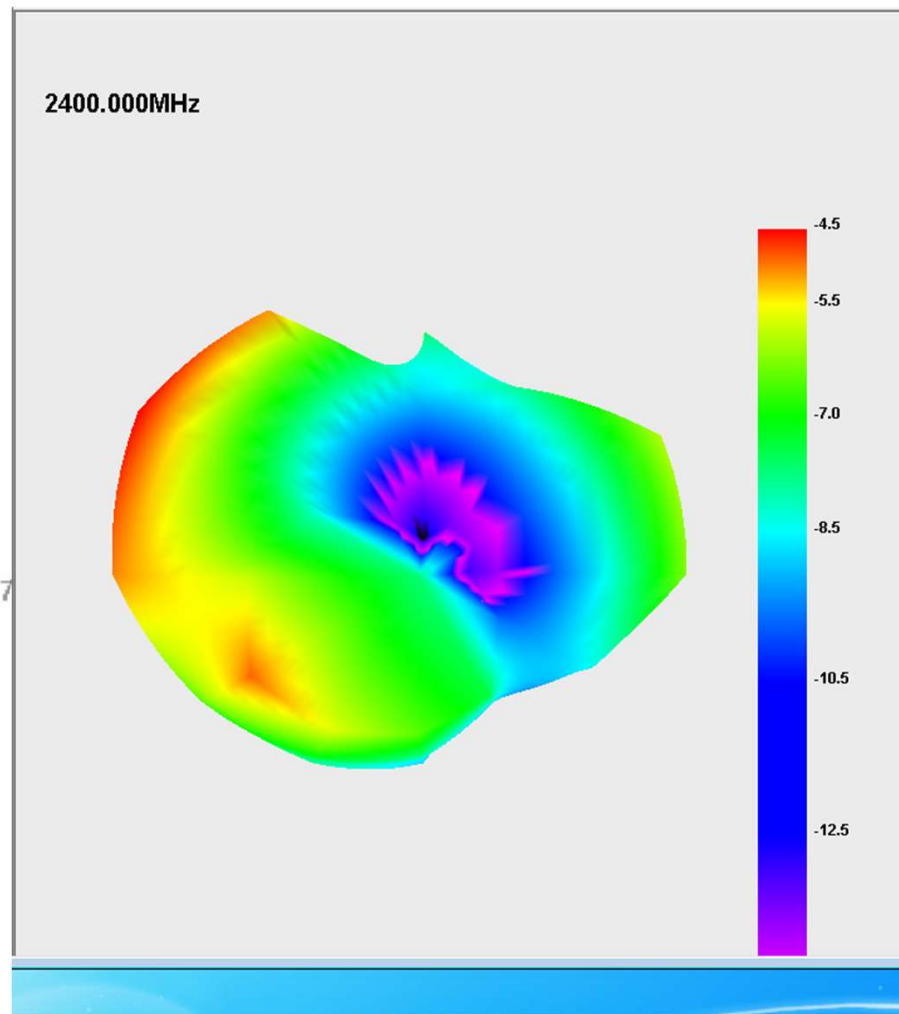
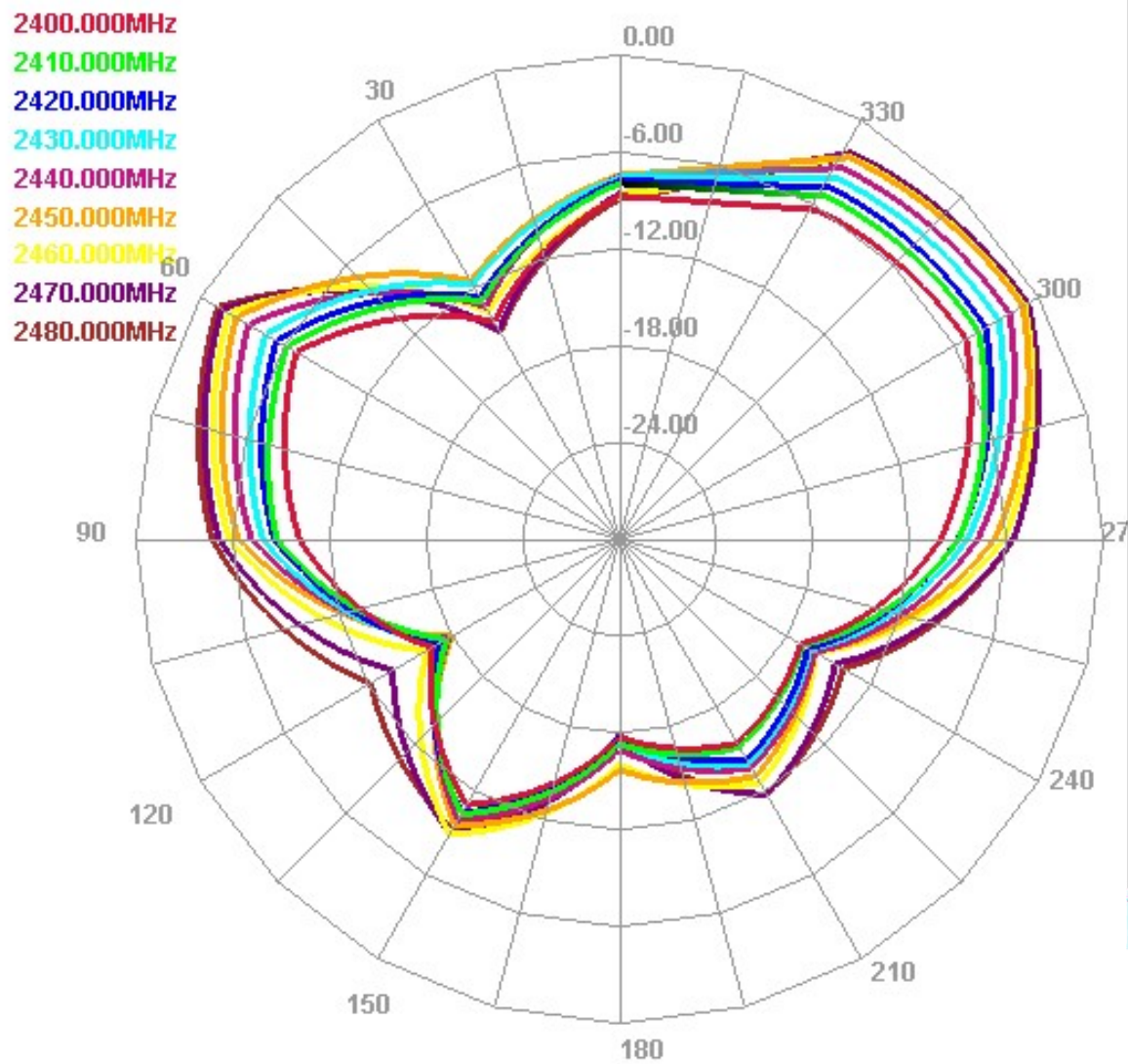
| Freq (MHz) | Effi (%) | Effi (dB) | Gain (dBi) |
|---------------|-------------|--------------|---------------|
| 2400 | 12.93 | -8.88 | -4.52 |
| 2410 | 13.8 | -8.6 | -3.39 |
| 2420 | 14.09 | -8.51 | -2.66 |
| 2430 | 15.89 | -7.99 | -1.73 |
| 2440 | 18.37 | -7.36 | -1.05 |
| 2450 | 21.69 | -6.64 | -0.43 |
| 2460 | 22.96 | -6.39 | -0.35 |
| 2470 | 24.49 | -6.11 | -0.36 |
| 2480 | 24.66 | -6.08 | -0.28 |

2.3 Radiation pattern

Horizontal

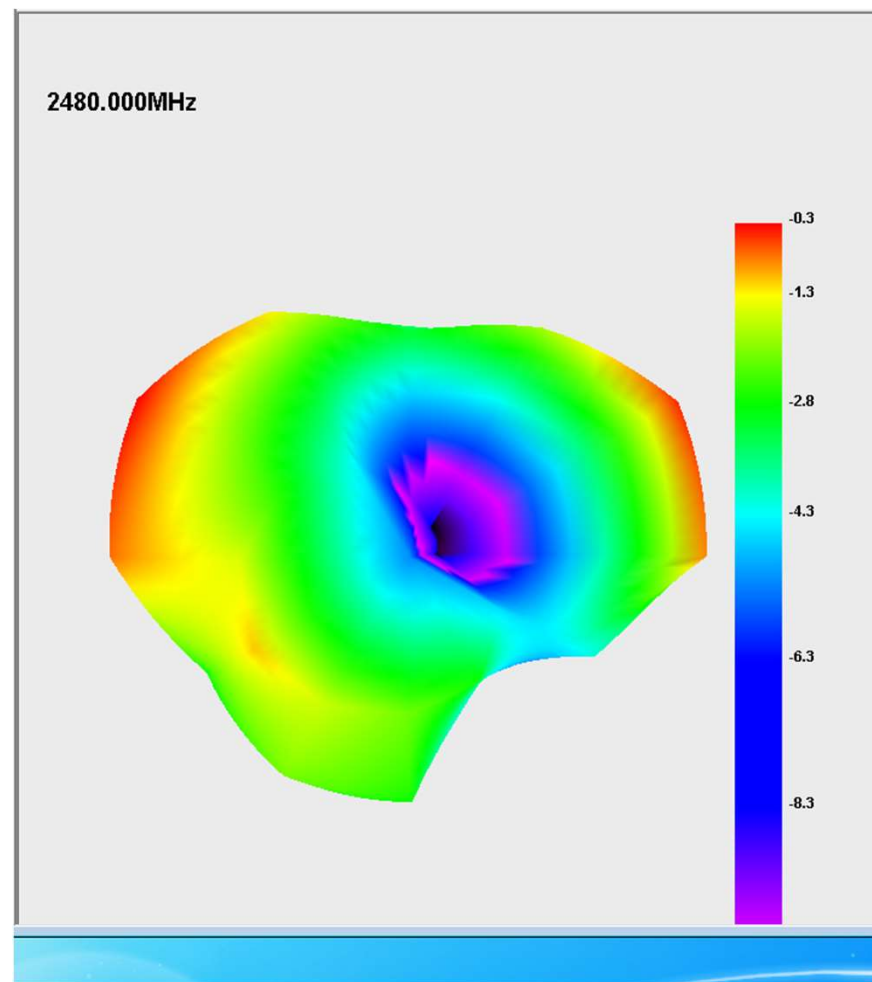
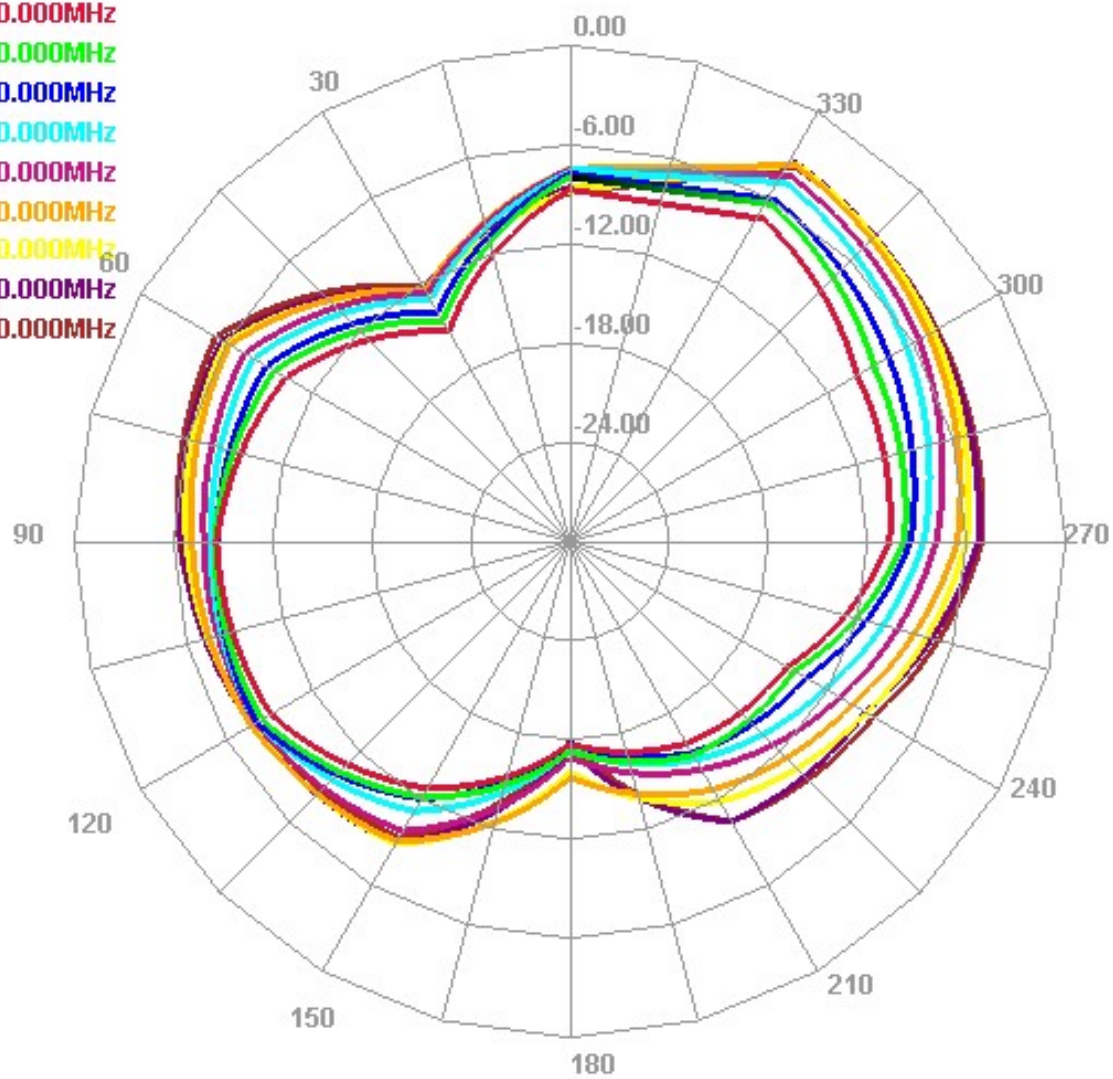


E1 Face



E2 Face

- 2400.000MHz
- 2410.000MHz
- 2420.000MHz
- 2430.000MHz
- 2440.000MHz
- 2450.000MHz
- 2460.000MHz
- 2470.000MHz
- 2480.000MHz



3、OTA test data

| band | channel | TRP (dBm) | TIS (dBm) |
|--------------|---------|-----------|-----------|
| Bluetooth BR | 0 | -0.1 | -89.2 |
| | 39 | 2.7 | -91.7 |
| | 78 | 1.7 | -90.1 |