

Appendix B

Highest Test Plots

Table of Contents

1. BT Head-worn 0mm SAR 3

1. BT Head-worn 0mm SAR

Date: 23.02.2024

Test Laboratory: Guangdong Dongdian Testing Service Co., Ltd.

Q24012628-2E

DUT: CREATIVE ZEN AIR 2; Serial: S24012628-01

Communication System: UID 0, Bluetooth (0); Communication System Band: Bluetooth; Frequency: 2480 MHz; Communication System PAR: 0 dB; PMF: 1.12202e-005

Medium parameters used: $f = 2480$ MHz, $\sigma = 1.788$ S/m, $\epsilon_r = 40.97$, $\rho = 1000$ kg/m³

Phantom section: Flat Section

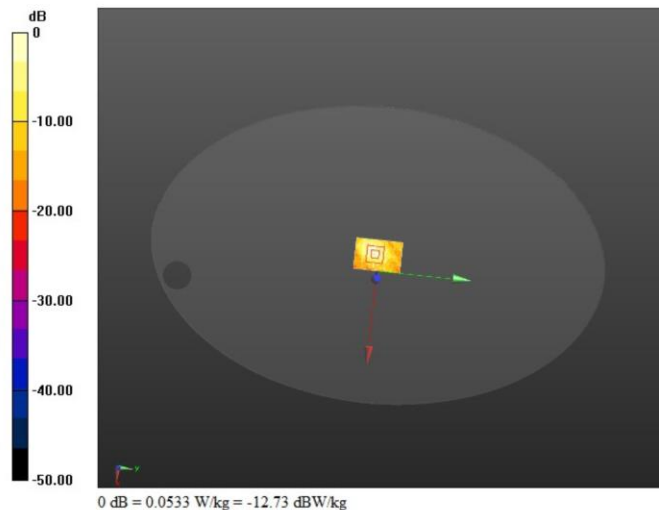
Measurement Standard: DASYS (IEEE/IEC/ANSI C63.19-2011)

DASY Configuration:

- Probe: EX3DV4 - SN3906; ConvF(8, 8, 8); Calibrated: 21.04.2023;
- Sensor-Surface: 1.4mm (Mechanical Surface Detection), $z = 1.0, 31.0$
- Electronics: DAE4 Sn1366; Calibrated: 10.04.2023
- Phantom: ELI v5.0; Type: QDOVA002AA; Serial: TP:1197
- DASY52 52.8.8(1222); SEMCAD X 14.6.10(7331)

Configuration/L Left Side 3DH5 2480/Area Scan (5x7x1): Measurement grid: $dx=10$ mm, $dy=10$ mm
Maximum value of SAR (measured) = 0.0425 W/kg

Configuration/L Left Side 3DH5 2480/Zoom Scan (7x7x7)/Cube 0: Measurement grid: $dx=5$ mm, $dy=5$ mm, $dz=5$ mm
Reference Value = 4.887 V/m; Power Drift = 0.15 dB
Peak SAR (extrapolated) = 0.0710 W/kg
SAR(1 g) = 0.026 W/kg; SAR(10 g) = 0.00844 W/kg
Maximum value of SAR (measured) = 0.0533 W/kg



Date: 23.02.2024

Test Laboratory: Guangdong Dongdian Testing Service Co., Ltd.

Q24012628-2E

DUT: CREATIVE ZEN AIR 2; Model Number:EF1190; Serial: S24012628-01

Communication System: UID 0, Bluetooth (0); Communication System Band: Bluetooth; Frequency: 2480 MHz; Communication System PAR: 0 dB; PMF: 1.12202e-005

Medium parameters used: $f = 2480$ MHz; $\sigma = 1.788$ S/m; $\epsilon_r = 40.97$; $\rho = 1000$ kg/m³

Phantom section: Flat Section

Measurement Standard: DASYS (IEEE/IEC/ANSI C63.19-2011)

DASY Configuration:

- Probe: EX3DV4 - SN3906; ConvF(8, 8, 8); Calibrated: 21.04.2023;
- Sensor-Surface: 1.4mm (Mechanical Surface Detection), $z = 1.0, 31.0$
- Electronics: DAE4 Sn1366; Calibrated: 10.04.2023
- Phantom: ELI v5.0; Type: QDOVA002AA; Serial: TP:1197
- DASY52 52.8.8(1222); SEMCAD X 14.6.10(7331)

Configuration/R Left Side 3DH5 2480/Area Scan (5x7x1): Measurement grid: $dx=10$ mm, $dy=10$ mm

Maximum value of SAR (measured) = 0.0874 W/kg

Configuration/R Left Side 3DH5 2480/Zoom Scan (7x7x7)/Cube 0: Measurement grid: $dx=5$ mm, $dy=5$ mm, $dz=5$ mm

Reference Value = 7.010 V/m; Power Drift = 0.12 dB

Peak SAR (extrapolated) = 0.129 W/kg

SAR(1 g) = 0.049 W/kg; SAR(10 g) = 0.017 W/kg

Maximum value of SAR (measured) = 0.0985 W/kg

