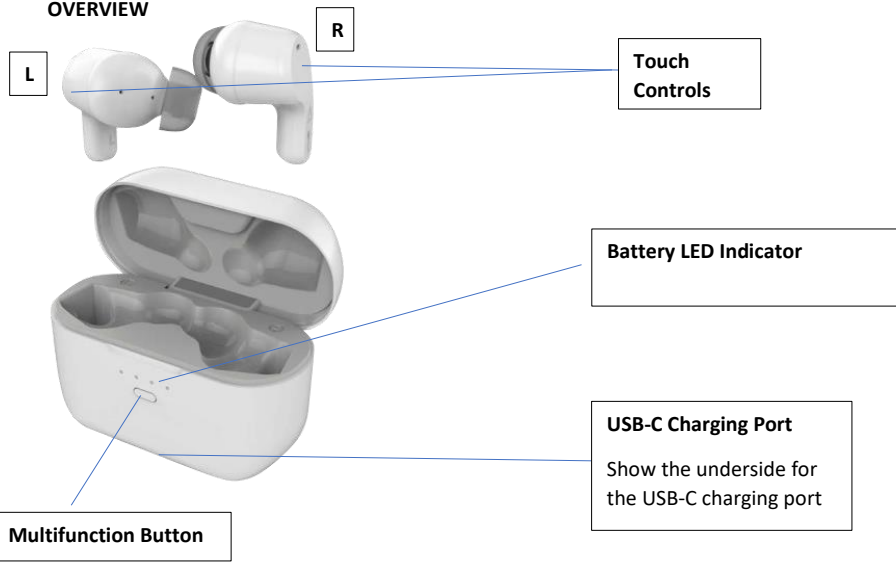
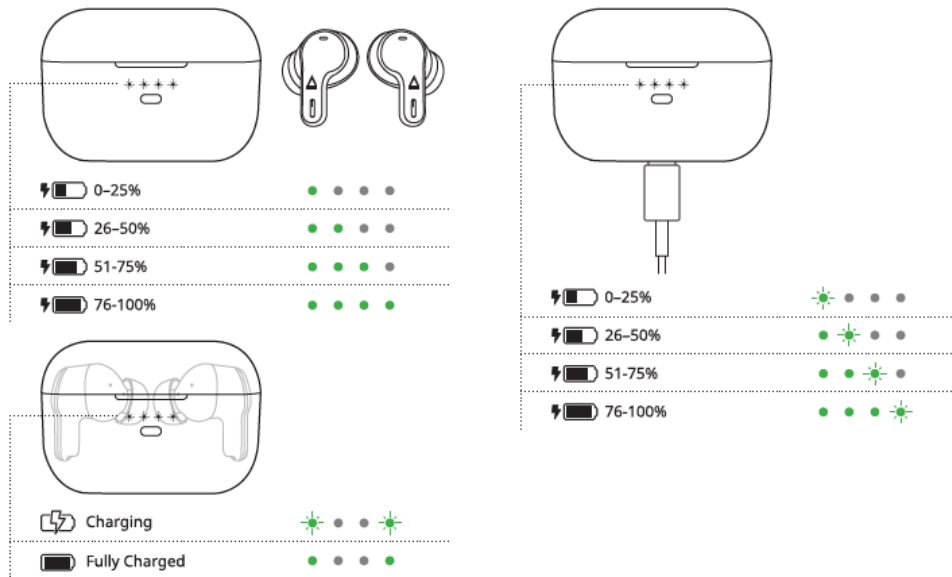


**Creative Zen Air Pro QSG**

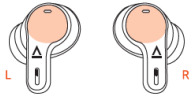
**OVERVIEW**



**BATTERY CASE INDICATOR**



## CONTROLS



### i) Powering On / Off

Power on / off the earbuds while out of its charging case.



### ii) Call Mode

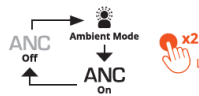
#### INCOMING CALL



#### OUTGOING / ONGOING CALL



### iii) Playback Mode



## STREAMING MODES

Creative Zen Air Pro supports both *Bluetooth*® LE Audio with Ultra-low Latency (ULL) Mode and Classic *Bluetooth*. The earbuds will attempt to pair in ULL mode when a compatible device is used.

### **Unicast Mode (LC3)**

Unicast mode lets the user wirelessly connect to a compatible *Bluetooth* LE audio receiver to enjoy high-definition audio streaming on a one-to-one basis.

### **Broadcast Mode (LC3)**

Broadcast mode lets the user broadcast wireless audio from an audio source to an unlimited number of supported audio devices. The LED indicator will start flashing white to indicate that it is currently broadcasting.

Note that the broadcast stream is unencrypted and any supported device can join the stream if it is within range.

### **Ultra-low Latency Mode (LC3+)**

ULL mode lets the users enjoy a smooth, lag-free, and consistent viewing experience, great for time-sensitive media such as movies and games. Visit [creative.com](https://www.creative.com) for more information on products supporting ULL mode.

## MASTER RESET

With both earbuds in the charging case, press and hold the multifunction button on the charging case for 10 seconds to perform a Master Reset. The charging case LED indicator will blink green and turn off upon completion.

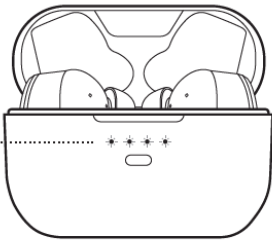
Master Reset is reserved for cases where users encounter issues while earbuds are in use or during situations such as: *Bluetooth* Pairing failure, failure to pair secondary earbud with the main earbud, or to reset all data.



## Common Connectivity Issues

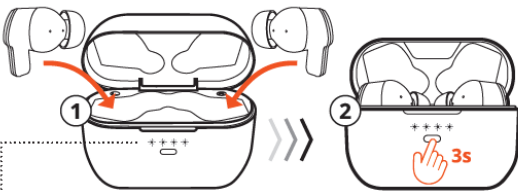
This article highlights a phenomena and recommendation for music cutting out and earbuds that do not stay connected. When pairing a smart mobile device with the earbuds, the signal is strongest when there is a line-of-sight between the pairing devices.



If the signal passes through the body, which is mostly made up of water fluid, it may get absorbed, which may result in pairing difficulty. If the mobile device is already connected to the earbuds, it may result in signal lost or the earbuds may get disconnected.

## Bluetooth Pairing



 Open the lid of the charging case and the earbuds will automatically initiate *Bluetooth* pairing 



 Manually initiate *Bluetooth* pairing via charging case 

## TECHNICAL SPECIFICATIONS

**Headphone Drivers:** 10 mm Neodymium drivers x 2

**Frequency Response:** 20–20,000 Hz

**Microphone:** Omni-directional MEMS x 6

**Total Playtime:**

- Up to 7 hours on a single charging
- Up to 27 hours total playtime

**Bluetooth LE Audio Modes:**

- Unicast (CIS) mode
- Broadcast (BIS) mode

**Classic Bluetooth Version:** Bluetooth 5.3

**Classic Bluetooth Profiles:**

- A2DP (Advanced Audio Distribution Profile)
- AVRCP (Audio / Video Remote Control Profile)
- HFP (Hands-free profile)

**Supported Audio Codecs:** LC3+ (ULL), LC3, AAC, SBC

**Wireless Operating Range:** Up to 10m / 33 ft measured in open space. Walls and structures will affect range of device.

**Max RF Output Power (For EU/UK)**

- **BT/BLE: 10dBm**

**Operating Frequency:**

- Bluetooth: 2402–2480 MHz
- WPC: 121.0-134.6kHz (WPC H-field value:-10.57dBuA/m at 10m)

Commented [LC(1): Refer to draft report

**Input Rating:** 5V=1A

**Operating Temperature:** 0–45°C

**IP Rating:** IPX5 (Earbuds only)

**Battery:**

- Earbuds: 3.7V 60mAh 0.222Wh Lithium-ion button battery
- Charging case: Lithium-ion polymer battery: 3.7V 500 mAh 1.85 Wh

**Charging interface:**

- Qi-compatible wireless charging, USB-A to USB-C (Charging)

*Note: Compliance marking are located at the bottom of the product.*

Operating frequency for China translation only;

频率范围: 2400–2483.5 MHz

工作频率: 2402–2480 MHz