

深圳市艾特诺通讯设备有限公司

天线测试报告

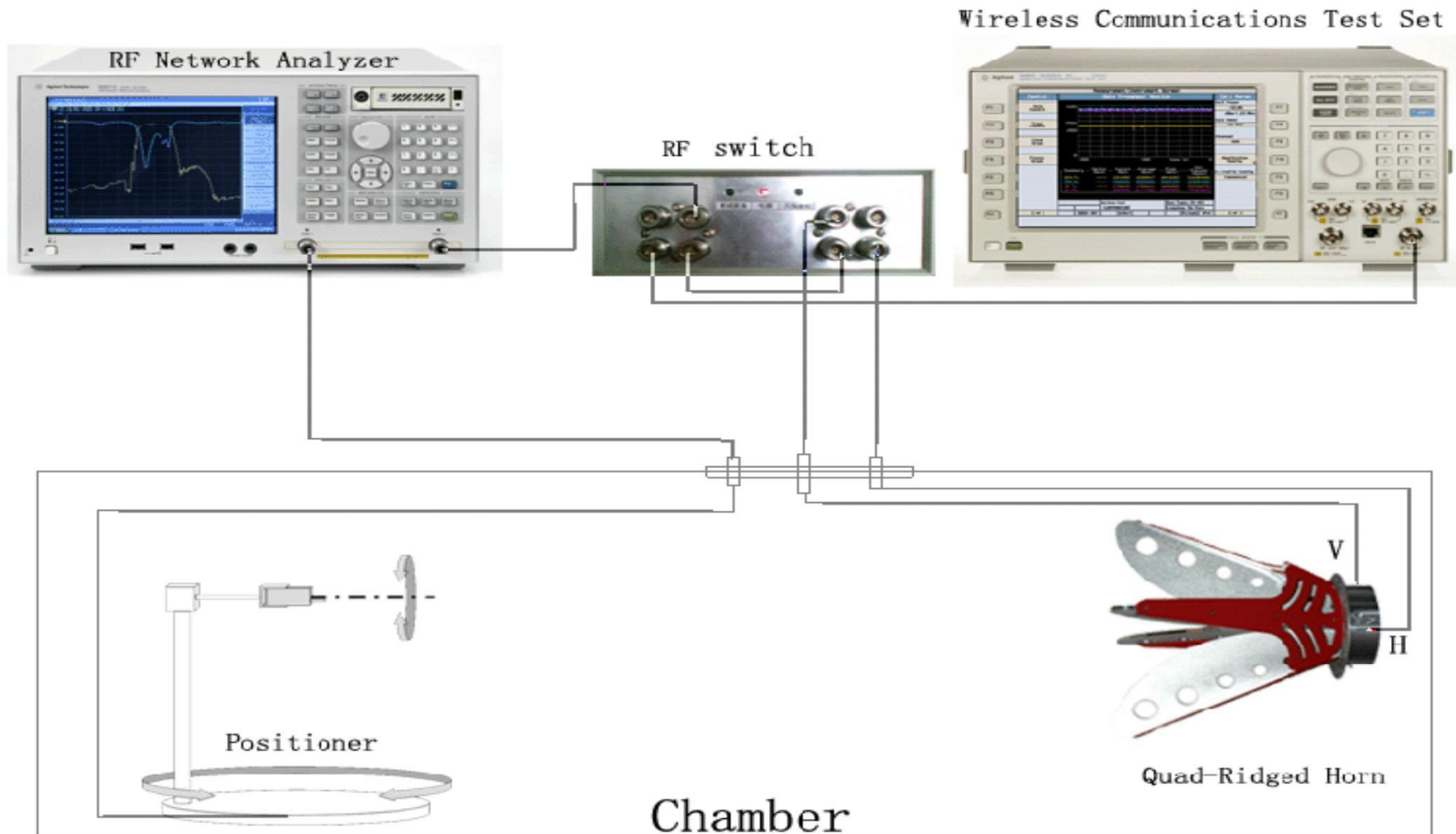
客户:	实益达 Seastar	项目	ST200N-2300IU	日期	2022.9.26
频段	2.4G-2.48G				
报告版本	V1.0 (PCB版本v1.9)				
天线结构	FPC焊贴后盖, 单极天线, L/R天线相同, 区分外形, 天线版本V2 FPC solder on back cover, monopole antenna, same L/R antenna, different shape, antenna version V2				

地址: 深圳市宝安区新安街道隆昌路美生创谷夏谷504-505

电话: 0755-29308863 传真: 0755-29308861

Room No. 505, building Xiagu, Meishengchuanggu, Longchang Road, Xinan Street, Baoan District, Shenzhen.

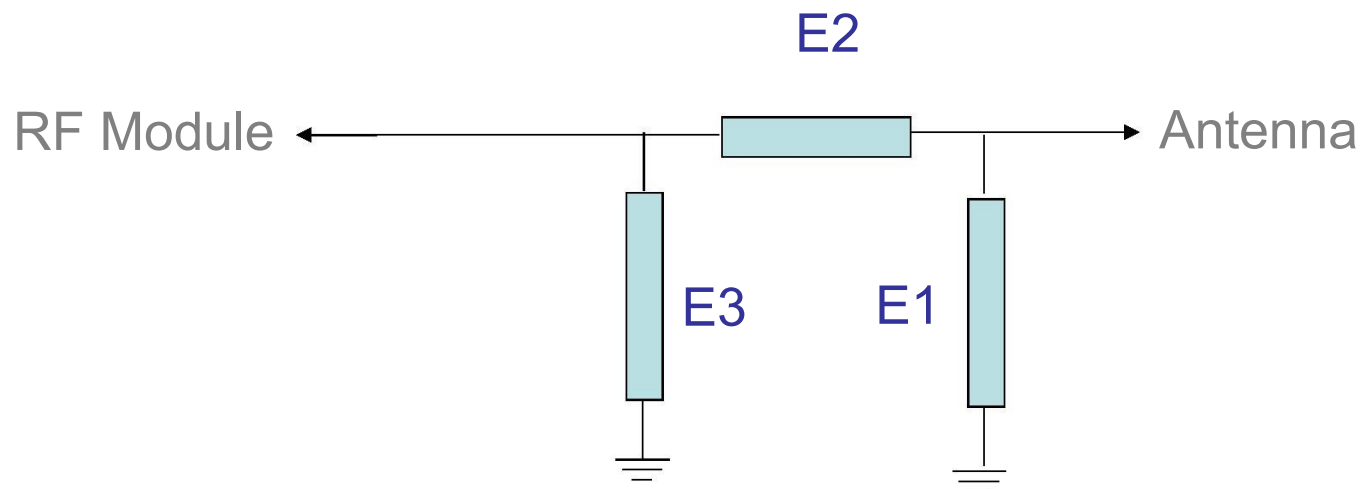
测试系统



目录

- 1、匹配电路 Circuit diagram
- 2、无源测试数据 Passive test data
- 3、OTA测试数据 OTA test data
- 4、装配要求 Assembly requirements
- 5、实用距离测试 Pratical distance test

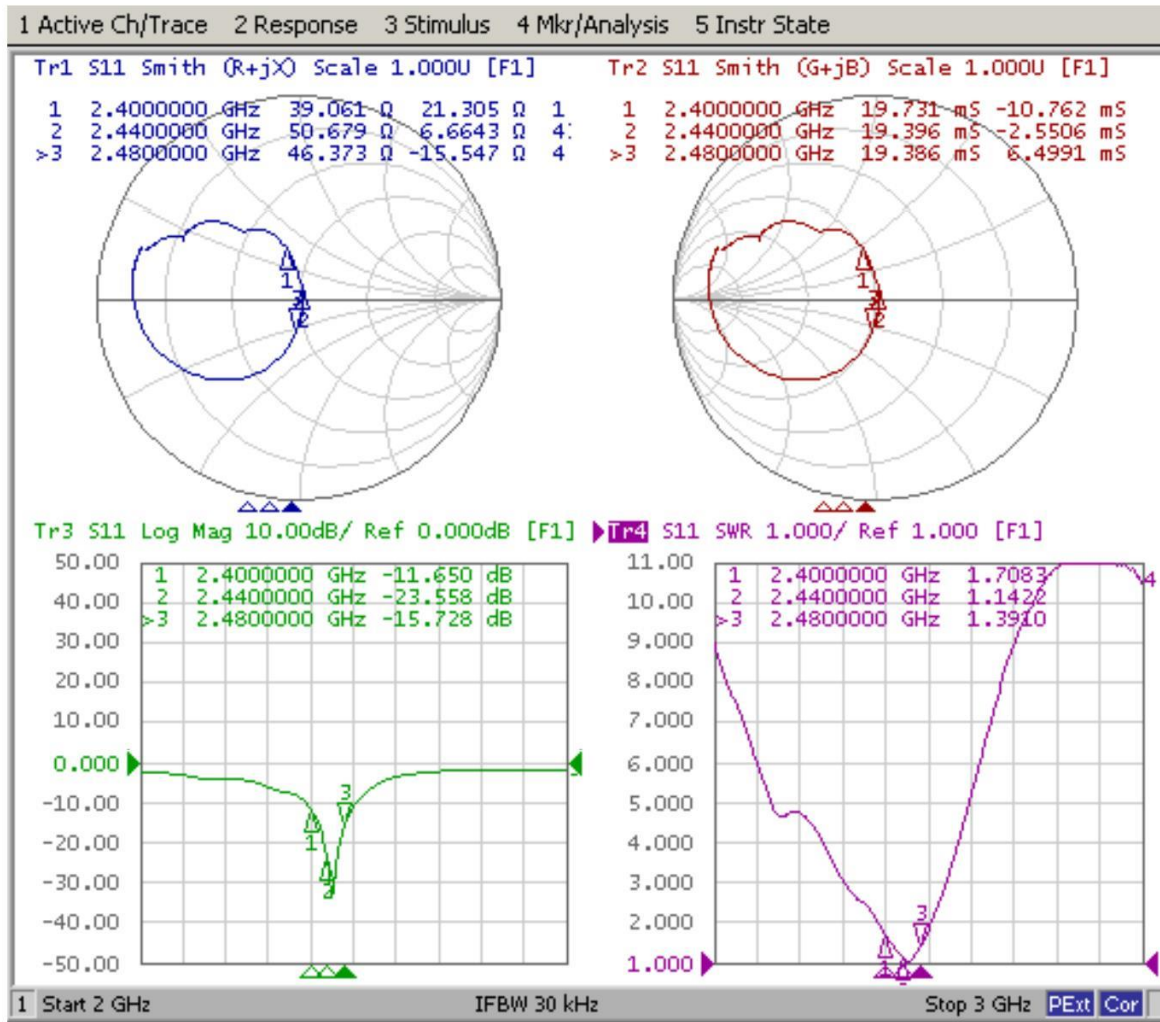
匹配电路



Element	Value
E1(0201)	NC
E2(0201)	1.5nH(LQP03TN1N5B02)
E3(0201)	2.0pF(GRM0335C1H2R0BA01D)
L/R匹配电路相同 L/R same circuit diagram	

2无源数据

2.1 S11 Parameter

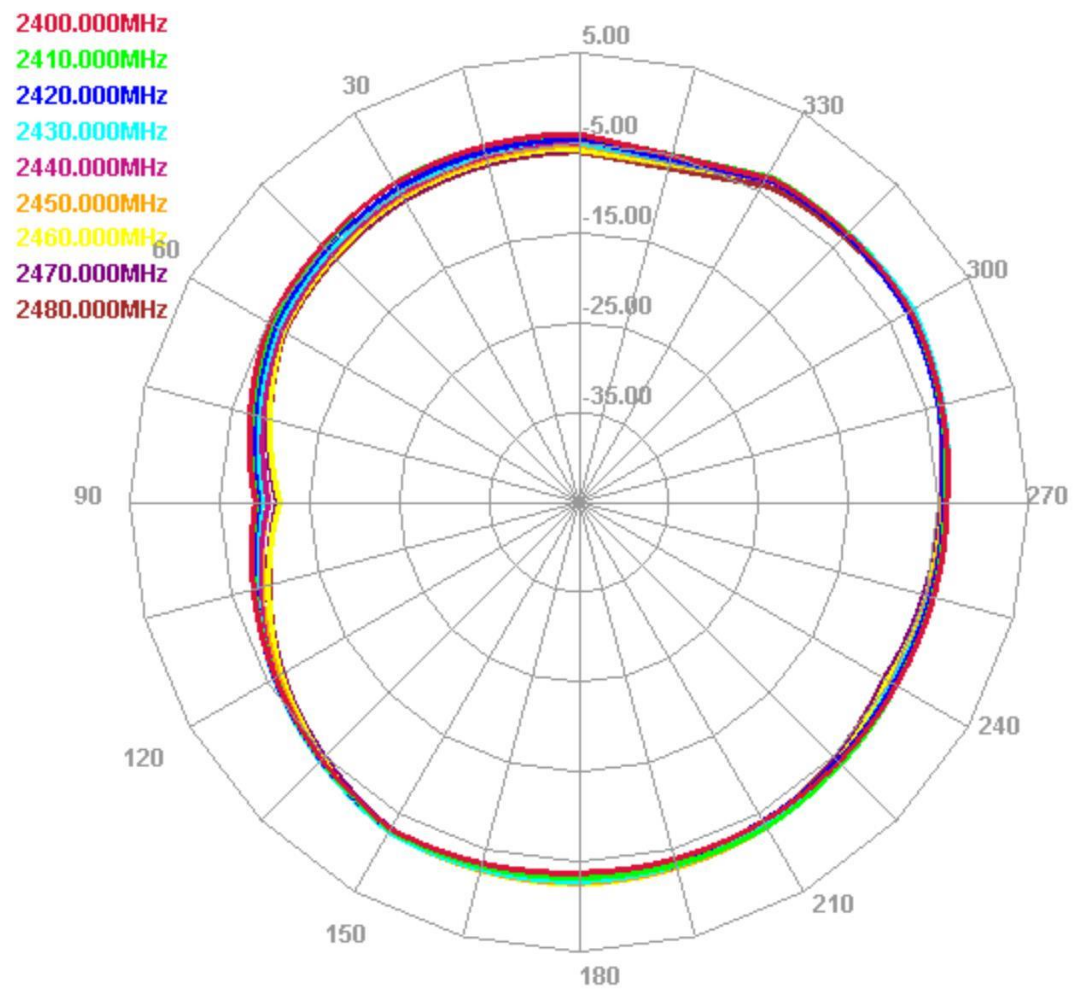


2.2 Gain & Efficiency

Freq (MHz)	Effi (%)	Effi (dB)	Gain (dBi)
2400	49.95	-3.01	0.47
2410	51.31	-2.9	0.54
2420	47.26	-3.26	0.2
2430	49.8	-3.03	0.29
2440	48.57	-3.14	0.6
2450	50.74	-2.95	0.81
2460	49.74	-3.03	1
2470	48.22	-3.17	1.15
2480	45.09	-3.46	0.84

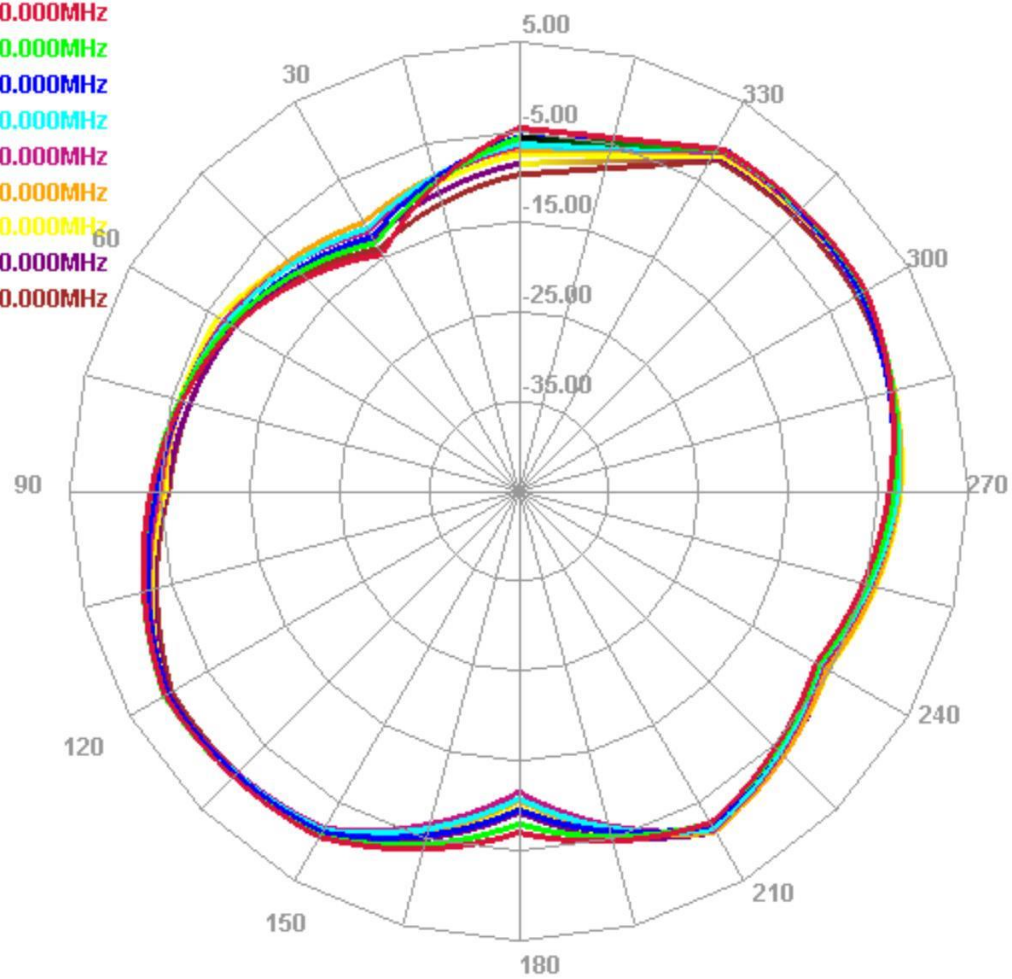
2.3 Radiation pattern

Horizontal

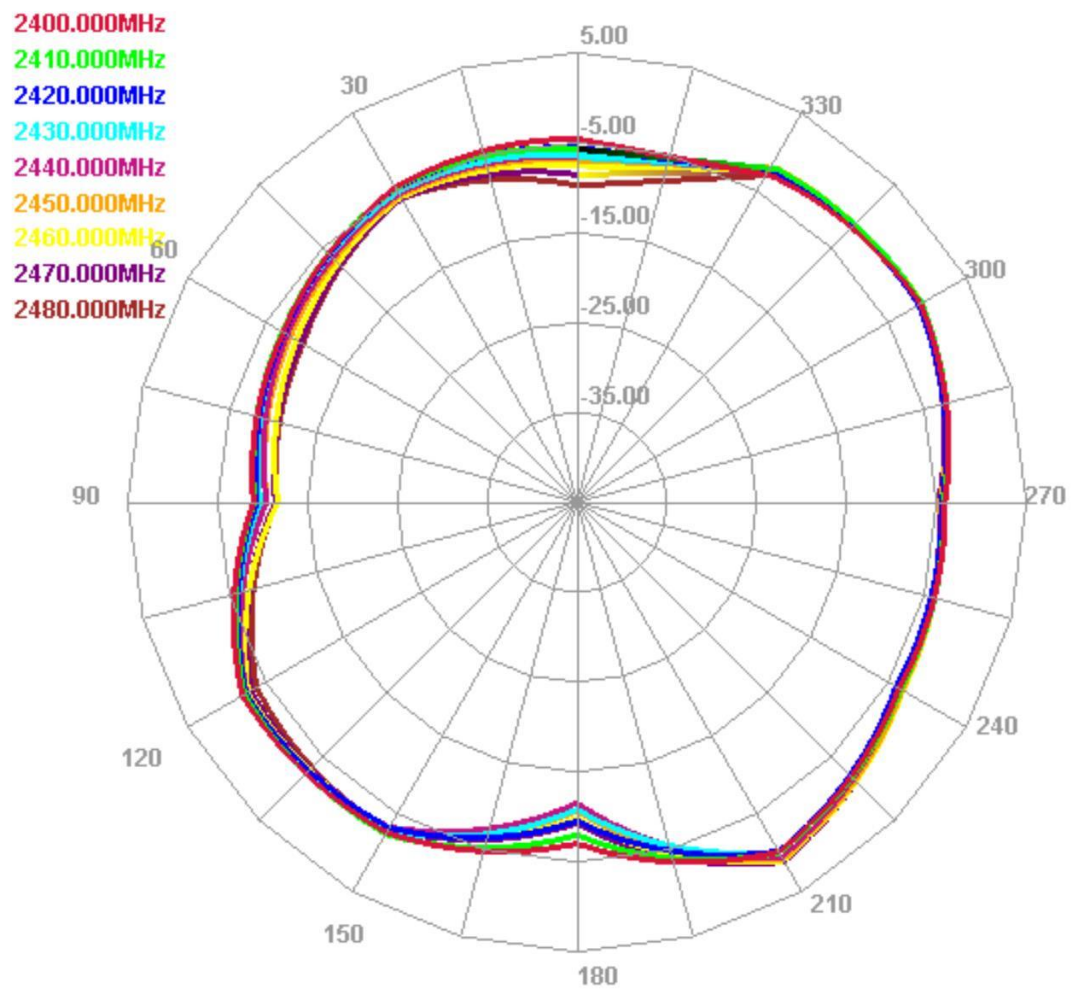


E1 Face

- 2400.000MHz
- 2410.000MHz
- 2420.000MHz
- 2430.000MHz
- 2440.000MHz
- 2450.000MHz
- 2460.000MHz
- 2470.000MHz
- 2480.000MHz



E2 Face



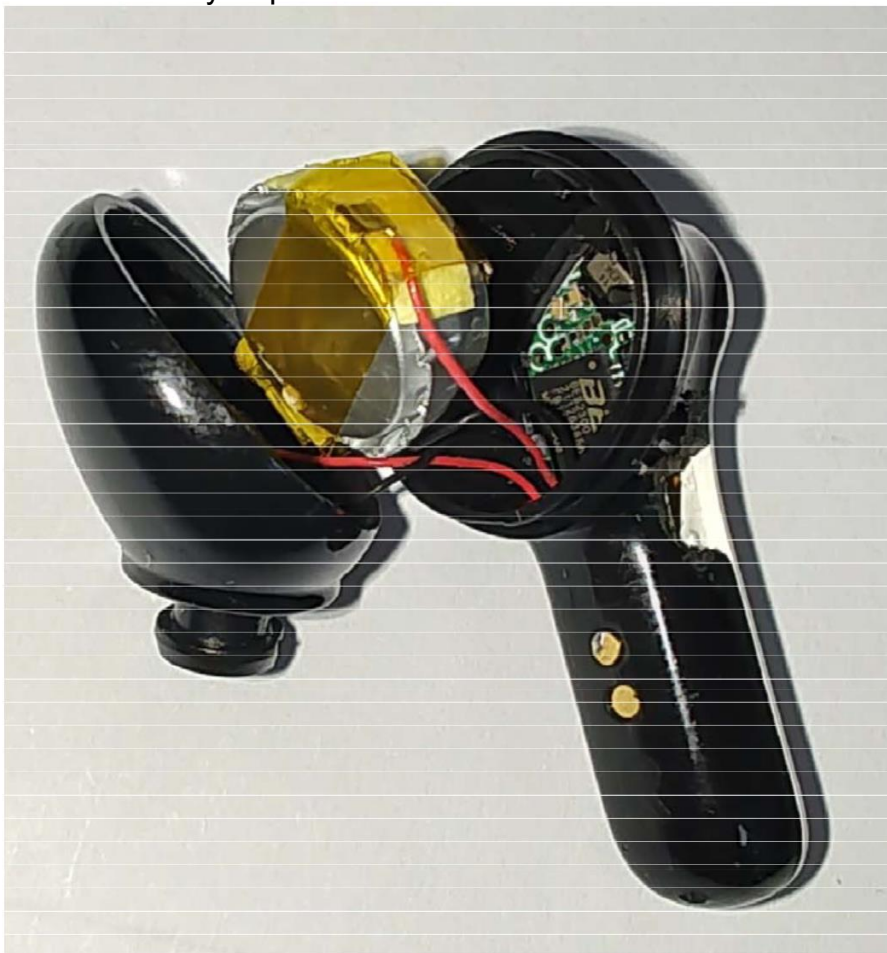
3、OTA测试数据

OTA test data

band	channel	TRP (dBm)	TIS (dBm)
Bluetooth BR (L)	0	11.5	-90.1
	39	11.3	-90.2
	78	11.1	-90.0

band	channel	TRP (dBm)	TIS (dBm)
Bluetooth BR (R)	0	10.9	-90.6
	39	11.1	-90.9
	78	10.8	-90.1

4、装配要求 Assembly requirements



喇叭线长20mm， 电池线长25mm

5、实测距离 Pratical distance test

测试地点：美生创谷南门隆昌路

测试手机 Tested mobile phone	苹果6s Iphone 6S
听音乐全向 (m)	20

Listed to music omnidirectional