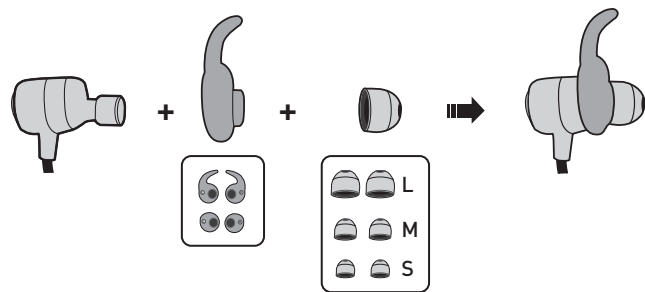
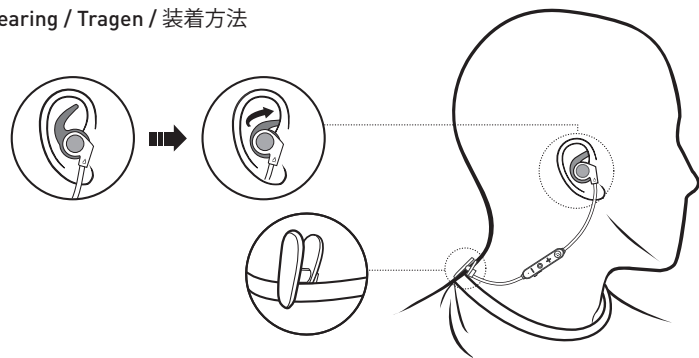


Customizing / Anpassen / カスタマイズ



Wearing / Tragen / 装着方法



CREATIVE®

CREATIVE

OUTLIER™
ONE PLUS

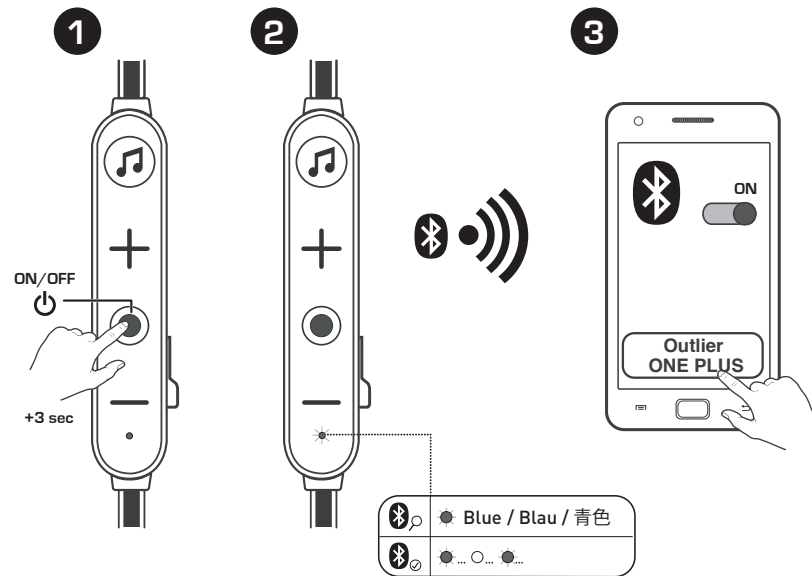
Wireless Sweatproof In-Ear
with Built-in MP3 Player

© 2018 Creative Labs Pte. Ltd. All rights reserved. Creative, the Creative logo and Outlier are trademarks or registered trademarks of Creative Technology Ltd in the U.S. and/or other countries. The Bluetooth® word mark and logos are owned by Bluetooth SIG, Inc. and any use of such marks by Creative Technology Ltd is under license. All other trademarks are property of their respective owners. Specifications are subject to change without notice.

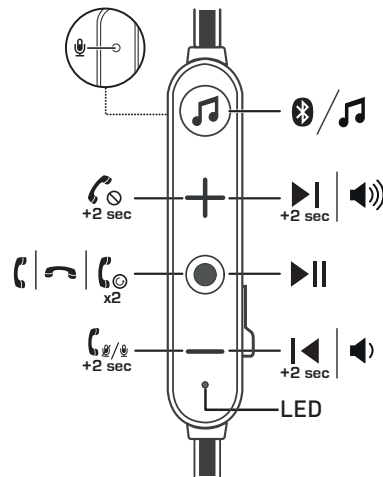
PN 03EF08000000 Rev A

Model No./型号: EF0800

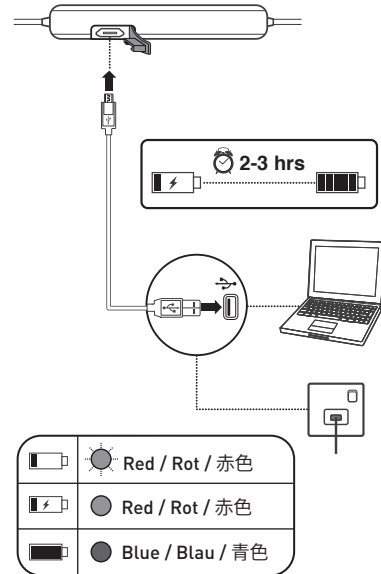
Bluetooth Pairing / Bluetooth-Kopplung / Bluetoothペアリング



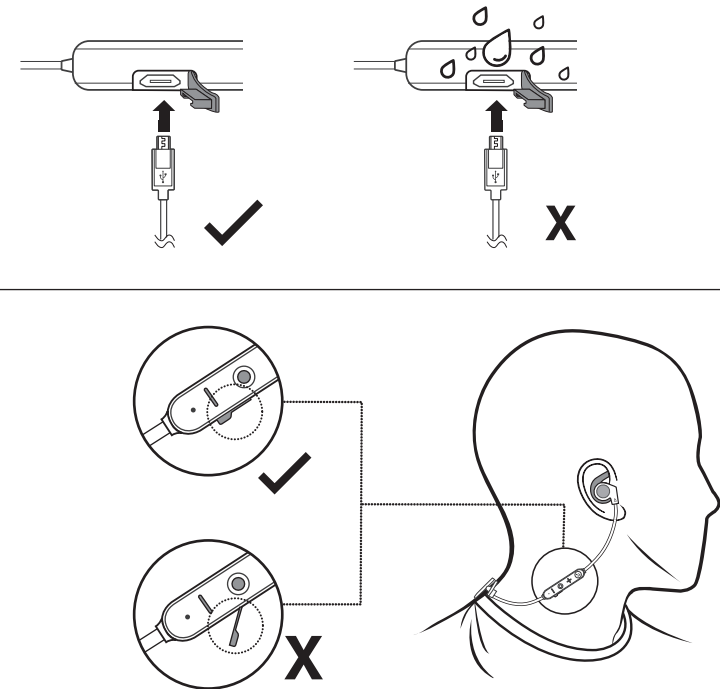
Overview / Überblick / 概要



Charging / Gerät wird aufgeladen / 充電



Caution / Vorsicht / ご注意



Additional Safety and Regulatory information for Creative Outlier One Plus

Regulatory Information

The following sections contain notices for various countries:

CAUTION: This product is intended for use with FCC/CE certified computer equipment. Please check the equipment operating/installation manual and/or with the equipment manufacturer to verify/confirm if your equipment is suitable prior to the installation or use of the product.

Notice for the USA

Federal Communication Commission (FCC) Interference Statement

FCC Part 15: This equipment has been tested and found to comply with the limits for a Class B digital device, pursuant to Part 15 of the FCC Rules. These limits are designed to provide reasonable protection against harmful interference in a residential installation. This equipment generates, uses and can radiate radio frequency energy and, if not installed and used in accordance with the instructions, may cause harmful interference to radio communications. However, there is no guarantee that interference will not occur in a particular installation.

If this equipment does cause harmful interference to radio or television reception, which can be determined by turning the equipment off and on, the user is encouraged to try to correct the interference by one or more of the following measures:

- * Reorient or relocate the receiving antenna.
- * Increase the separation between the equipment and receiver.
- * Connect the equipment into an outlet on a circuit different from that to which the receiver is connected.
- * Consult the dealer or an experienced radio/TV technician for help.

This device complies with part 15 of the FCC Rules. Operation is subject to the following two conditions:

1. This device may not cause harmful interference, and
2. This device must accept any interference received, including interference that may cause undesired operation.

CAUTION: To comply with the limits of the Class B digital device, pursuant to Part 15 of the FCC Rules, this device must be installed with computer equipment certified to comply with Class B limits.

All cables used to connect to the computer and peripherals must be shielded and grounded. Operation with non-certified computers or non-shielded cables may result in interference to radio or television reception. may result in interference to radio or television reception.

MODIFICATION: Any changes or modification not expressly approved by the grantee of this device could void the user's authority to operate the device.

Federal Communication Commission (FCC) Radiation Exposure Statement

This equipment complies with FCC radiation exposure limits set forth for an uncontrolled environment. This transmitter must not be co-located or operating in conjunction with any other antenna or transmitter.

NOTICE FOR CANADA

This device complies with Industry Canada license-exempt RSS standard(s). Operation is subject to the following two conditions:

- (1) This device may not cause interference, and
- (2) This device must accept any interference, including interference that may cause undesired operation of the device.

Le présent appareil est conforme aux CNR d'Industrie Canada applicables aux appareils radio exempts de licence. L'exploitation est autorisée aux deux conditions suivantes :

- (1) l'appareil ne doit pas produire de brouillage, et
- (2) l'utilisateur de l'appareil doit accepter tout brouillage radioélectrique subi, même si le brouillage est susceptible d'en compromettre le fonctionnement.

MODIFICATION: Any changes or modification not expressly approved by the grantee of this device could void the user's authority to operate the device.

Toute modification non approuvée explicitement par le fournisseur de licence de l'appareil peut entraîner l'annulation du droit de l'utilisateur à utiliser l'appareil.

Ukraine RoHS Statement

Обладнання відповідає вимогам Технічного регламенту щодо обмеження використання деяких небезпечних речовин в електричному та електронному обладнанні, затвердженого постановою Кабінету Міністрів України від 3 грудня 2008 № 1057

充電式電池リサイクルについてのご注意

クリエイティブの一部製品にはリチウムイオン充電電池が使用されています。



Li-ion

リチウムイオン充電電池はリサイクル可能な資源です。

- クリエイティブ製品に内蔵されている充電電池をリサイクルするには、充電電池の取り外しはお客様ご自身では行わないで下さい。リサイクルの方法などのお問い合わせは、クリエイティブメディア株式会社のカスタマーサービスセンター (<http://jp.creative.com/support/contact/>日本語のみ) にご相談下さい。
- 取り外しが可能なクリエイティブ製品の充電電池をリサイクルするには –



注意事項

- 安全の為、電力を完全に使い切ってから充電電池を取り外して下さい。
- 安全の為、充電電池の金属端子部分にはセロハンテープなどの絶縁テープを貼って下さい。
- 安全策を講じた使用済み充電電池は、充電式電池のリサイクル協力店へお持ち下さい。充電式電池の回収/リサイクルおよびリサイクル協力店については、中間責任法人JBRCのホームページ <http://www.jbrc.com/> を参照して下さい。

Vietnam RoHS Statement

This product is in compliance with Circular 30/2011/TTBCT of the Ministry of Trade of the Socialist Republic of Vietnam ("Circular"), it does not contain the following substances in concentration greater than the Maximum Limit value as specified in the Circular.

Substance	Maximum Limit (ppm) 1, 2
* lead	1000
* mercury	1000
* cadmium	100
* hexavalent chromium	1000
* polybrominated biphenyls (PBB)	1000
* polybrominated diphenyl ethers (PBDE)	1000

¹ Maximum Limit does not apply to applications exempted from the Circular.

² Maximum Limit refers to concentration by weight in homogeneous materials.

NOTICE FOR SINGAPORE

Complies with
IMDA Standards
DA107311