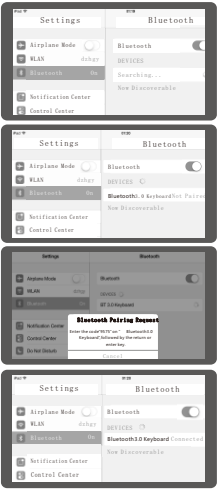


PowerBank Bluetooth Keyboard

User Manual

Connection Instructions:



1. please open the power switch on the right top of keyboard ,press it 1s to open the power switch (press 4s to close the power switch).
2. press + matching code key ,the blue light will twinkle ,then the device into searching and matching.
3. Click the “Setting” on the iPad ,then open the “Bluetooth” .
4. Open the “Bluetooth” into searching, then you will find “Bluetooth 3.0 Keyboard” click to next step.
5. According the table PC tips to input the correct password then click “Enter” button.
6. There have a tip for connecting successfully ,you can use your keyboard comfortably .

Technical Specifications

Size	281.1x190.2x11.7mm
Weight	500g
Charge Voltage	5.0-6.0V
Output Voltage	4.5-5.25V
Output Current	0-3.0A
Battery	24.05Wh
Charge Time	About 2.5 hours(2A)

Note: Please read the user manual carefully before you start using this product.

Product features

	iOS Apple iOS System	Android Switch to Android System	Win Switch to Win System
	Esc	Esc	Esc
	F1	F1	Lock/Shutdown
	F2	F2	F2
	F3	F3	F3
	F4	F4	F4
	F5	F5	F5
	F6	F6	F6
	F7	F7	F7
	F8	F8	F8
	F9	F9	F9
	F10	F10	F10
	F11	F11	F11
	F12	F12	F12

Product features ( Fn+ )

	Fn+ iOS Apple iOS System	Fn + Android Switch to Android System	Fn+ Win Switch to Win System
	Esc	Esc	Esc
	F1	F1	F1
	F2	F2	F2
	F3	F3	F3
	F4	F4	F4
	F5	F5	F5
	F6	F6	F6
	F7	F7	F7
	F8	F8	F8
	F9	F9	F9
	F10	F10	F10
	F11	F11	F11
	F12	F12	F12
	Switch system	Switch system	Switch system
	Bluetooth pairing	Bluetooth pairing	Bluetooth pairing
	On/Off keyboard page	On/Off keyboard page	Z
	Switch language	Switch language	Switch language
	PgUp	PgUp	PgUp
	PgDn	PgDn	PgDn
	Home	Home	Home
	End	End	End

LED Display Status

		D1	D2	D3	D4
Charging	Battery Capacity	D1	D2	D3	D4
	100%-99%	Red Bright	Green Bright	Green Bright	Green Bright
	99%-75%	Red Bright	Green Bright	Green Bright	Green Grint
	75%-50%	Red Bright	Green Bright	Green Grint	Go out
	50%-25%	Red Bright	Green Grint	Go out	Go out
Output	25%-0%	Red Grint	Go out	Go out	Go out
	100%-75%	Red Bright	Green Bright	Green Bright	Green Grint
	75%-50%	Red Bright	Green Bright	Green Grint	Go out
	50%-25%	Red Bright	Green Grint	Go out	Go out
	25%-0%	Red Grint	Go out	Go out	Go out
	Low Voltage	Red Grint	Go out	Go out	Go out
	No Power	Go out	Go out	Go out	Go out

1. Turn on switch,the D4 will show blue light about 2 seconds.
2. When you connect the Bluetooth device,the D4 blue light will glitter.After connecting the D4 light go out
3. When you use caps lock,the D4 light always blue.

Notice.The light show just according to Voltage,not show according to battery capacity

Power Bank Keyboard Maintenance

1. Please keep the keyboard away from liquid or humid environment, saunas, swimming pool, steam room and don't let the keyboard get wet in the rain.
2. Please don't expose the keyboard at too high or too low temperature condition.
3. Please don't put keyboard under sun for a long time.
4. Please don't put keyboard close to the flame, such as cooking stoves, candles or fireplace.
5. Avoid sharp objects scratching products, timely to recharge or replace the dry cell products to ensure the normal use.

FCC Warning Statement

Changes or modifications not expressly approved by the party responsible for compliance could void the user's authority to operate the equipment. This equipment has been tested and found to comply with the limits for a Class B digital device, pursuant to Part 15 of the FCC Rules. These limits are designed to provide reasonable protection against harmful interference in a residential installation. This equipment generates uses and can radiate radio frequency energy and, if not installed and used in accordance with the instructions, may cause harmful interference to radio communications. However, there is no guarantee that interference will not occur in a particular installation. If this equipment does cause harmful interference to radio or television reception, which can be determined by turning the equipment off and on, the user is encouraged to try to correct the interference by one or more of the following measures:  
-Reorient or relocate the receiving antenna.  
-Increase the separation between the equipment and receiver.  
-Connect the equipment into an outlet on a circuit different from that to which the receiver is connected.  
-Consult the dealer or an experienced radio/TV technician for help.