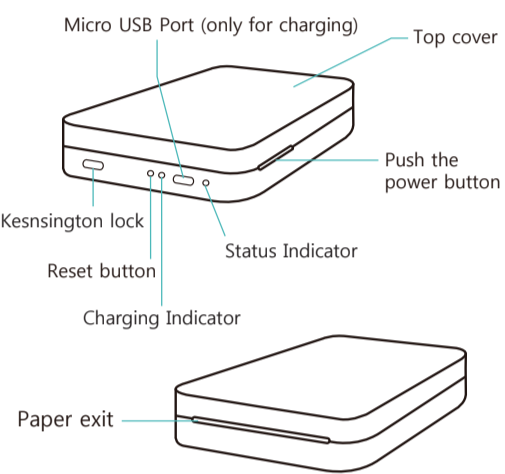




Names of parts



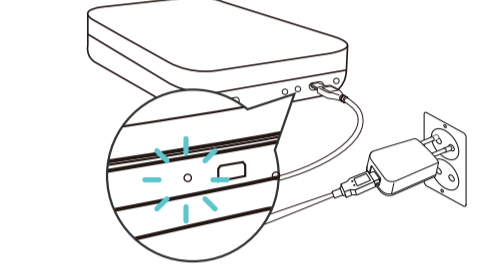
Safety Precautions

This equipment has been tested and found to comply with the limits for a Class B digital device... Safety Precautions... This device complies with Part 15 of the FCC Rules...

CAUTION

Any changes or modifications in construction of this device which are not expressly approved by the party responsible for compliance could void the user's authority to operate the equipment... BATTERY WARNINGS

Charging the battery



This device has a built-in battery. Make sure that the battery is charged fully before use. Average charging time: About 1 hour and 30 minutes

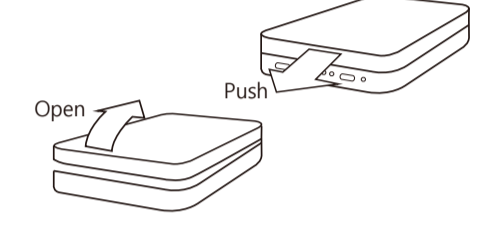
Table with 2 columns: Charging status indicator, Description of status. Rows: Charging in progress, Charging completed

Notice: The use of a non-standard charger can cause malfunction and exception from the subjects of warranty service...

Safety Precautions

WARNING: A violation of labeling regulations can cause serious injury or death. NOTICE: A violation of labeling regulations causes minor injury or damage to the product.

Cover Open method



Inserting printing paper

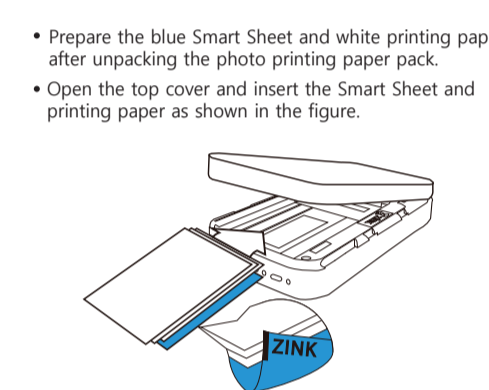


Table of Contents

- Names of parts ..... 6
Power on/off ..... 7
Charging the battery ..... 8
Cover Open method ..... 9
Inserting printing paper ..... 9
Description of LED Status Indicators ..... 10
Components check ..... 11
Zink Smart Sheet ..... 12
Application Connection and Printing ..... 13
Product specifications ..... 18
Items to check before reporting a malfunction ..... 19

Description of LED Status Indicators

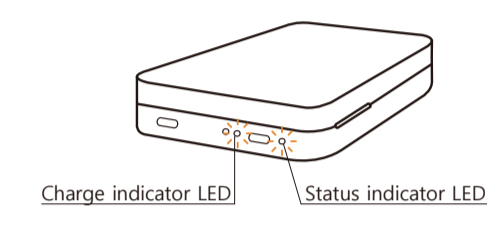
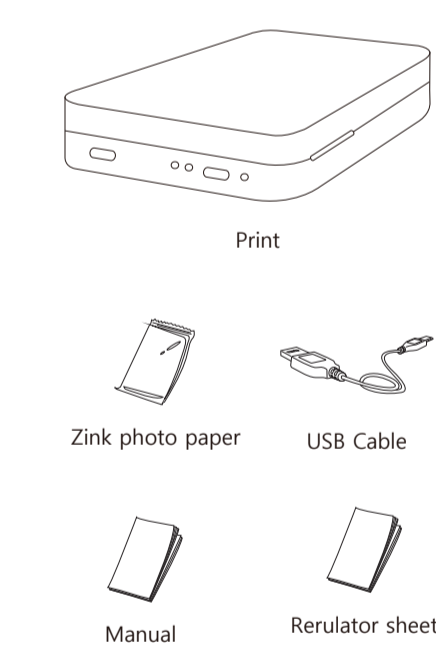


Table with 4 columns: Charging status indicator, Operating status indicator, Current status, Details. Rows: Off, Standby/On, Charging in progress, Charging in progress, Charging in progress, Operating/Flashing, Error/Flashing

Components check

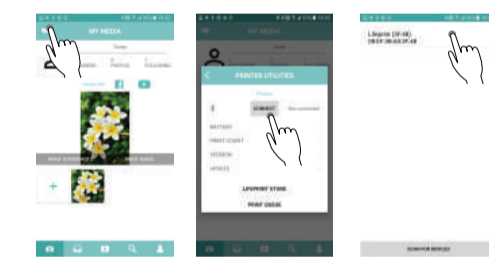


Zink Smart Sheet

Features: Provide optimum image quality correction suitable for each printing paper pack. How to use: Eject automatically before printing out the paper in initial output.

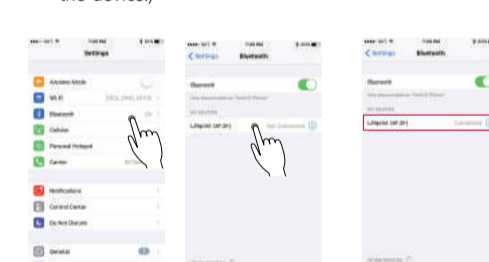
Application Connection and Printing

- APP Connection: Select the exclusive APP and execute it after turn on the printer. Android Connection: Select the exclusive APP and execute it after turn on the printer.



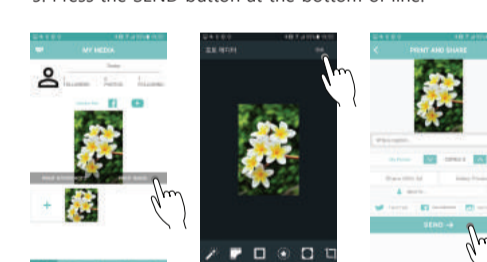
ios Connection

- 1. Turn on the power of the device. 2. For Bluetooth connection, change the mode to "Turn on" [Bluetooth] from [Settings] of the device.

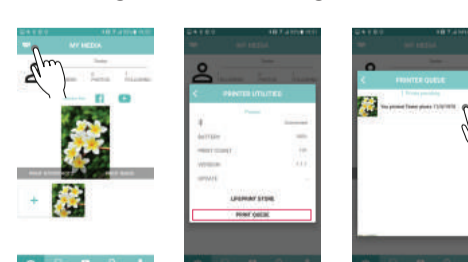


Printing (both for Android & iOS)

- 1. Execute the Lifeprint App. 2. Select the designed photo on main screen. 3. Press the PRINT IMAGE button.



- 6. Be moved main screen automatically after press the printing button on the top of the left screen. 7. Press the PRINT QUEUE at the bottom of line. 8. Select the image for printing, the image will be saved on waiting list after send the image.



Setting (both for Android & iOS)

- 1. Select the Print button on the top of the left screen on Main. 2. Do setting and checking for each functions on Devices screen.

Description for Setting

Table with 2 columns: Function, Description. Rows: connect, Battery, PRINT COUNT, VERSION, UPDATE, LIFEPRIINT STORE, PRINT QUEUE

Product specifications

Table with 2 columns: Type, Size. Rows: Paper size, Type of supported image file/size, Paper used, Paper storage conditions, Product operating conditions, Optimal print conditions, LED display, Communication, External connection terminal, USB power supply, Normal operating voltage, Built-in battery, Proper image resolution, Weight, Support App version

Items to check before reporting a malfunction

Table with 2 columns: Problems, Checklist. Rows: Power does not turn on, Bluetooth connection is not established, Printing paper seems to be jammed, Stopped during printing operation, The power turns off automatically after a certain period of time, The printed photo shows a line

Table with 2 columns: Problems, Checklist. Rows: White LED flashes and printed paper does not come out, Printed paper comes out too late, The printed image quality differs greatly from the original image quality, The printed image quality cannot be guaranteed in case you use printing paper of other companies.

PRINTING INFORMATION table with 2 columns: COLOR, PROCESS, MATERIAL. Rows: CMYK, Offset Printing

Table with 4 columns: DATE, NO, CONTENT, SIGN. Row 1: DATE, NO, CONTENT, SIGN

Table with 10 columns: NO, CODE, MATERIAL, TREATMENT, QTY, MODEL, REMARK, DRAWN, DESIGN, CHECK, APPRO, DATE, TOL, SCALE, UNIT, NAME, DWG NO. Row 1: DATE: 2016.08.08, TOL: -, SCALE: 1:1, UNIT: mm, NAME: MANUAL USER (Japan), DWG NO: GK07X0000100