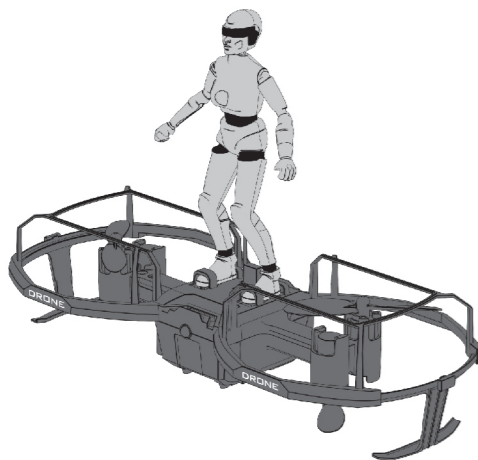


14+ AGES 4-AXIS DRONE USER'S GUIDE



Thank you for choosing our product.
Please read this manual carefully before flying.
Retain this manual for future reference.

As inconsistent with the specification in pictures, please prevail in kind.

TROUBLESHOOTING GUIDE

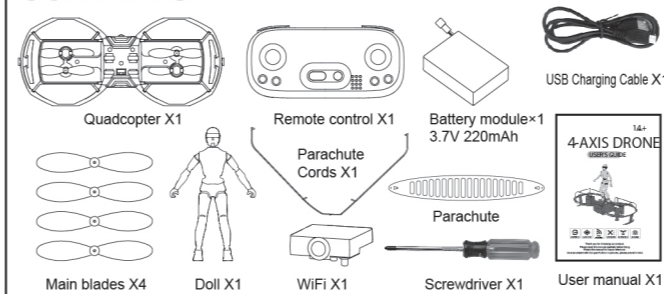
SITUATION	THE REASON	COUNTERMEASURE
The drone drops and cannot fly.	The airscrew gets stuck by guard circle.	The airscrew which got stuck by guard circle can regularly get homing.
The drone diverges	The gyro does not stand at the middle point	turn on the drone again reset the drone on. Refer to P4.
No response after battery is connected to drone .	1. Poor contact on battery terminals. 2. The energy storage of battery is low.	1. Please reset the battery , and make sure that the power plug is connected well with battery. 2.The battery must be fully charged.

IMPORTANT NOTICE

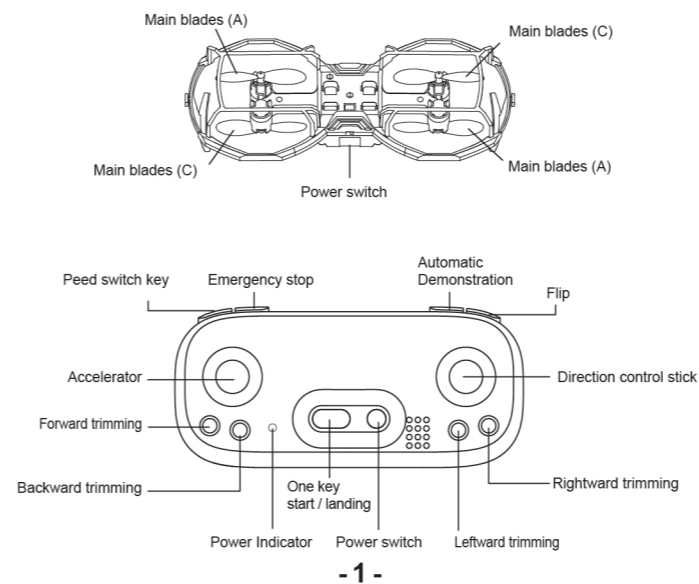
1. Quadcopter is not a toy. There is still some risks exist. Please be sure to correctly use strictly in accordance with the safety notes and instructions. Any modification or improper use of the product may cause unexpected danger or accident. Please do not overlook.
2. This product is not suitable for users under 14 years old. Please ensure the product is operated under safe environment. Manufacturer and dealer assume no liability for accidental damages by abnormal wear of parts, improper assembly, or operation in unsafe manners.
3. This RC drone requires high flying skills. Any damages caused by wrong operations of disassemble and usage, can not be replaced, returned and exchanged under the warranty. If issues with usage, operation and maintenance happened, our company or distributors will provide you technical guidance and spare parts supply at special prices.
4. This RC drone is dangerous for beginners to fly. It should fly away from people, especial for beginner pilots. Improper assembly, damaged parts, wrong operations may cause unforeseen accidents such as injuries resulting from the losing control of the flight, etc. The pilots must pay attention to the flying safety and well know his/her flying ability for any accidents by his/her negligence.
5. This RC drone can fly indoor and outdoor. Do not fly it in unsafe places, such as nearing heat sources, high-voltage power cables, and forbidden flying drones.

The Company has the right of final interpretation of this instruction manual statement.

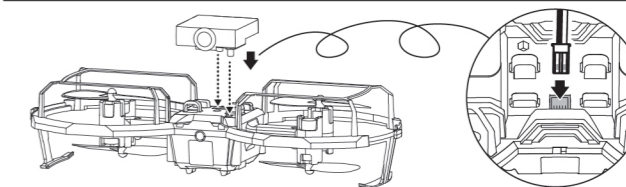
CONTENTS



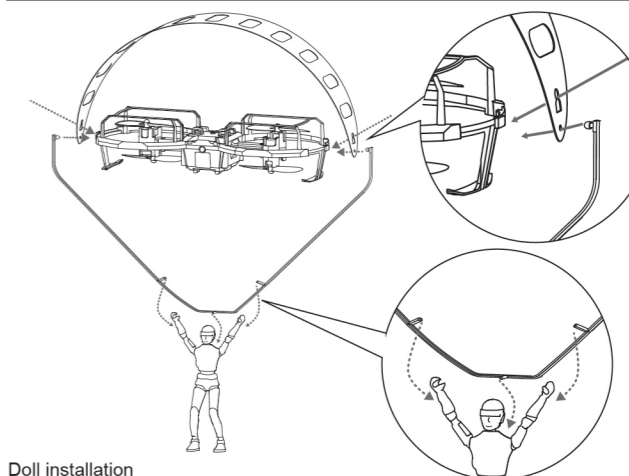
NAMES OF CONTROLLER



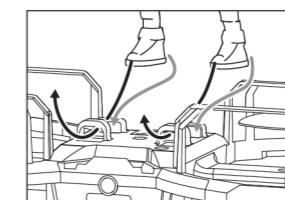
WIFI MODE INSTALLATION



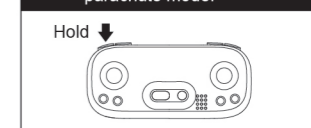
DOLL AND PARACHUTE INSTALLATION



Doll installation



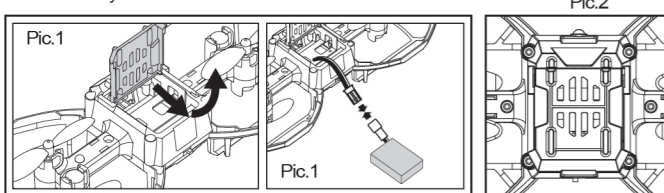
speed switch key, and then turn on the power switch to enter parachute mode.



- 2 -

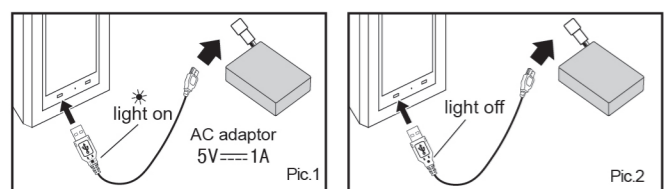
QUADCOPTER BATTERY INSTALLATION

1. Install the battery module in the orientation shown in the figure to the battery holder of the body. (Pic.1)
2. The battery module is installed. (Pic.2)



CHARGING BATTERIES

1. Push the on/off switch of quadcopter to OFF position. Connect the charging port to a power supply device which has the USB interface with the USB cable. Charging light on, that is in the state of charge. (Pic.1)
2. After charging for about 30 minutes, charging light off when full. (Pic.2)



CAUTIONS WHEN CHARGING:

1. When charging, please put this product on a dried or ventilated area and keep it far away from heat source or explosive product.
2. When charging should be supervised by an adult so as not to cause an accident.
3. After flying, please do not charge the Quadcopter if the surface temperature is still not cool. Otherwise it may cause a swollen battery or even a fire hazard.
4. Please make sure that you use the original USB charging cable provided. When the battery has been used for a long time, or appears to be swollen, please replace them.
5. A battery when not in use for a long time will lose its charge automatically. Charging or discharging too often may reduce the life of the battery.

- 3 -

CONTROLLER BATTERY BATTERY INSTALLATION

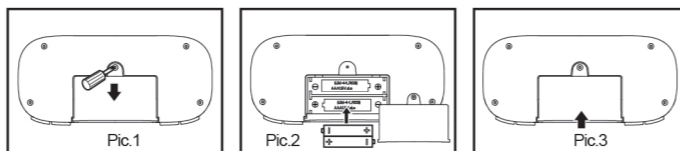
1. Loosen the fastening nut on the battery cover with a screwdriver. Take out the battery cover. (Pic. 1)
2. Put 2X1.5V "AAA" batteries in the battery compartment as per the polarity shown inside. (Pic. 2)
3. Close the battery cover. (Pic. 3)

WARNING

1. Do not mix different types of batteries.
2. Do not mix old and new batteries.
3. Install batteries with correct polarity.

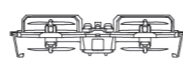
Note:

Batteries should be inserted with the correct polarity.



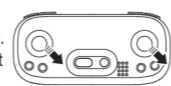
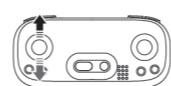
READY TO FLY

1. Unfold the quadcopter and place it on a horizontal position, then open up the power switch on the quadcopter. When the indicator lights flash, it means that the quadcopter goes into the flight standby mode.



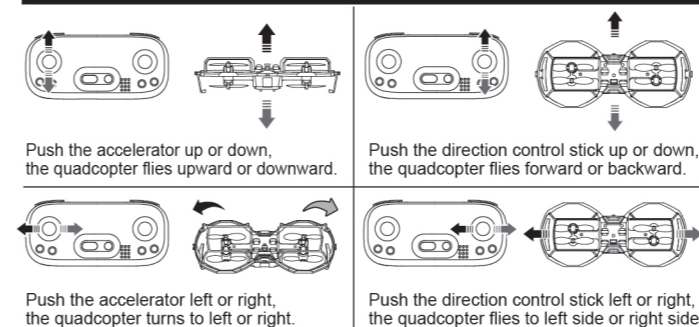
Note: The antenna of the transmitter must be aligned the tail of the quadcopter.

2. Open up the power switch of the transmitter. Push the left lever (accelerator) to the highest point and then reset to the lowest point. When the light in the quadcopter change to continuous lighting, it means that binding successfully.
3. Push the left and right lever at the same time to bottom left in 45 degree. The quadcopter's light stops flash and always light up, it means that compass adjustment successfully.
4. Push the left and right lever at the same time to bottom right in 45 degree. The quadcopter's light stops flash and always light up. At the same time, the transmitter buzzer beep once, it means that horizontal adjustment successfully.

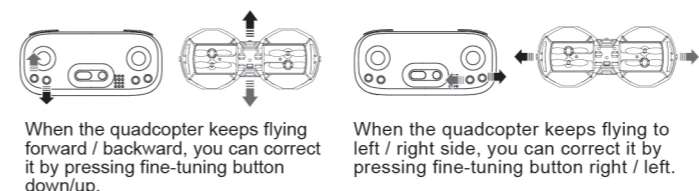


- 4 -

OPERATING DIRECTION

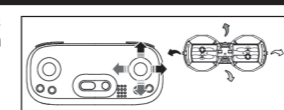


FINE-TUNING OPERATION



3D EVERSION

3D Eversion instructions When you are familiar with basic operation, you can do some awesome & exciting tricks an stunts! First of all, fly the drone to a height of more than 3 meters, press the 3D Eversion switch on the rear right side of the transmitter, then push the right rudder (in any direction) to make 360 degree flip.



HIGH AND LOW SPEED SWITCHING

During the flight of the quadcopter, the flight speed can be switched by pressing this button while it forward, backward, turn left and turn right. The quadcopter speed defaults to a low speed. Press this button once to switch to medium speed. At the same time, the transmitter buzzer beeps twice. Press the button again to switch to high speed. At the same time, the transmitter buzzer beeps three times. One more pressing turn back to low speed and beep once.

- 5 -

INSTRUCTIONS FOR ALTITUDE-HOLD CONTROL

STARTING THE QUADCOPTER

- Method 1: Press the one-key take-off key once and the quadcopter's propellers would rotate slowly and then lift off from the ground into the air.
- Method 2: Shift the two control sticks outwards into an "A" shape for about one second and the quadcopter's propellers would rotate slowly.



TURNING OFF THE QUADCOPTER

- Method 1: After the quadcopter is started, turn the left and right joysticks of the remote controller downwards outer 45° at the same time. After about 1 second, the quadcopter is locked and the propeller stops rotating.
- Method 2: After the quadcopter is started, pull down the left joystick of the remote controller to the lowest position. About 3 seconds later, the quadcopter is locked and the propeller stops rotating.



ONE-KEY LANDING

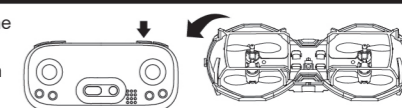
When the quadcopter is flying high in the air, press the "One-key Landing" key once and the quadcopter would land slowly. At this time, you can move the quadcopter to a certain spot by using the direction-change or left control stick. The quadcopter's propellers would then stop rotating

EMERGENCY STOP

In case of emergency during the flight, press the emergency stop button to stop the drone so as not to cause harm.

AUTOMATIC DEMONSTRATION

Press the demo button, and the drone will rotate to the left. Any action of right joystick can exit automatic demonstration.



WIFI APP DOWNLOAD

see the software for instructions.



Android (China Mainland)



IOS System

- 6 -

NOTE: This equipment has been tested and found to comply with the limits for a Class B digital device, pursuant to part 15 of the FCC Rules. These limits are designed to provide reasonable protection against harmful interference in a residential installation. This equipment generates uses and can radiate radio frequency energy and, if not installed and used in accordance with the instructions, may cause harmful interference to radio communications. However, there is no guarantee that interference will not occur in a particular installation. If this equipment does cause harmful interference to radio or television reception, which can be determined by turning the equipment off and on, the user is encouraged to try to correct the interference by one or more of the following measures:

- Reorient or relocate the receiving antenna.
- Increase the separation between the equipment and receiver.
- Connect the equipment into an outlet on a circuit different from that to which the receiver is connected.
- Consult the dealer or an experienced radio/TV technician for help

Changes or modifications not expressly approved by the party responsible for compliance could void the user's authority to operate the equipment.

This device complies with Part 15 of the FCC Rules. Operation is subject to the following two conditions:

- (1) this device may not cause harmful interference, and
- (2) this device must accept any interference received, including interference that may cause undesired operation.