

# FCC Test Report

Report No.: AGC02294180602FE08

**FCC ID** : 2AJGM-UV6R  
**PRODUCT DESIGNATION** : Dual Band FM Transceiver  
**BRAND NAME** : BAOFENG  
**MODEL NAME** : UV-6R, UV-6RA  
**CLIENT** : PO FUNG ELECTRONIC(HK) INTERNATIOANL  
GROUP COMPANY  
**DATE OF ISSUE** : Jun. 26, 2018  
**STANDARD(S)** : FCC Part 15 Rules  
**REPORT VERSION** : V 1.0

Attestation of Global Compliance (Shenzhen) Co., Ltd

**CAUTION:**

This report shall not be reproduced except in full without the written permission of the test laboratory and shall not be quoted out of context.



The results shown in this test report refer only to the sample(s) tested unless otherwise stated and the sample(s) are retained for 30 days only. The document is issued by AGC, this document cannot be reproduced except in full with our prior written permission. The more details and the authenticity of the report will be confirmed at <http://www.agc-cert.com>.

**Report Revise Record**

Report Version	Revise Time	Issued Date	Valid Version	Notes
V1.0	/	Jun. 26, 2018	Valid	Initial Release

The results shown in this test report refer only to the sample(s) tested unless otherwise stated and the sample(s) are retained for 30 days only. The document is issued by AGC, this document cannot be reproduced except in full with our prior written permission. The more details and the authenticity of the report will be confirmed at <http://www.agc-cert.com>.

**TABLE OF CONTENTS**

<b>1. VERIFICATION OF COMPLIANCE .....</b>	<b>4</b>
<b>2. PRODUCT INFORMATION .....</b>	<b>5</b>
<b>3. IDENTIFICATION OF THE RESPONSIBLE TESTING LOCATION .....</b>	<b>6</b>
<b>4. SUPPORT EQUIPMENT LIST .....</b>	<b>7</b>
<b>5. SYSTEM DESCRIPTION .....</b>	<b>7</b>
<b>6. SUMMARY OF TEST RESULTS .....</b>	<b>8</b>
<b>7. FCC RADIATED EMISSION TEST .....</b>	<b>9</b>
7.1. TEST EQUIPMENT OF RADIATED EMISSION .....	9
7.2. LIMITS OF RADIATED EMISSION TEST .....	9
7.3 BLOCK DIAGRAM OF RADIATED EMISSION TEST .....	9
7.4 PROCEDURE OF RADIATED EMISSION TEST .....	11
7.5 TEST RESULT OF RADIATED EMISSION TEST .....	12
<b>8. CONDUCTED EMISSION TEST .....</b>	<b>14</b>
8.1 PROVISIONS APPLICABLE .....	14
8.2 MEASUREMENT PROCEDURE .....	14
8.3 TEST SETUP BLOCK DIAGRAM .....	15
8.4 TEST RESULT .....	16
<b>9. ANTENNA CONDUCTED POWER FOR RECEIVERS .....</b>	<b>18</b>
<b>APPENDIX 1 PHOTOGRAPHS OF TEST SETUP .....</b>	<b>21</b>
<b>APPENDIX 2 PHOTOGRAPHS OF EUT .....</b>	<b>22</b>

The results shown in this test report refer only to the sample(s) tested unless otherwise stated and the sample(s) are retained for 30 days only. The document is issued by AGC, this document cannot be reproduced except in full with our prior written permission. The more details and the authenticity of the report will be confirmed at <http://www.agc-cert.com>.

## 1. VERIFICATION OF COMPLIANCE

<b>Applicant</b>	PO FUNG ELECTRONIC(HK) INTERNATIOANL GROUP COMPANY
<b>Address</b>	3/F FULOK BLDG 131-133 WING LOK ST SHEUNG WAN, Hong Kong
<b>Manufacturer</b>	PO FUNG ELECTRONIC(HK) INTERNATIOANL GROUP COMPANY
<b>Address</b>	3/F FULOK BLDG 131-133 WING LOK ST SHEUNG WAN, Hong Kong
<b>Product Designation</b>	Dual Band FM Transceiver
<b>Brand name</b>	BAOFENG
<b>Test Model</b>	UV-6R
<b>Serial Model</b>	UV-6RA
<b>Serial Model Difference</b>	All the same except for the model name and front appearance.
<b>Hardware Version</b>	UV6R_R25_V03
<b>Software Version</b>	UV-6R
<b>Measurement Procedure</b>	ANSI C63.4: 2014
<b>Date of test:</b>	Jun. 19, 2018 to Jun. 26, 2018
<b>Deviation:</b>	None
<b>Condition of Test Sample</b>	Normal

The above equipment was tested by Attestation Of Global Compliance (Shenzhen) Co., Ltd. for compliance with the requirements set forth in the FCC Rules and Regulations Part 15, the measurement procedure according to ANSI C63.4:2014. This said equipment in the configuration described in this report shows the maximum emission levels emanating from equipment are within the compliance requirements.

The test results of this report relate only to the tested sample identified in this report.

Tested By



Steven Zhou(Zhou Pengyun) Jun. 26, 2018

Reviewed By



Bart Xie(Xie Xiaobin) Jun. 26, 2018

Approved By



Forrest Lei(Lei Yonggang)  
 Authorized Officer Jun. 26, 2018

The results shown in this test report refer only to the sample(s) tested unless otherwise stated and the sample(s) are retained for 30 days only. The document is issued by AGC, this document cannot be reproduced except in full with our prior written permission. The more details and the authenticity of the report will be confirmed at <http://www.agc-cert.com>.

## 2. PRODUCT INFORMATION

The EUT is a D Dual Band FM Transceiver designed for voice communication. It is designed by way of utilizing the F3E modulation achieves the system operating. A major technical description of EUT is described as following:

<b>Communication Type</b>	Voice / Tone only
<b>Modulation</b>	FM
<b>RX Frequency Range</b>	Rx:136 MHz -174 MHz, 400MHz -520MHz
<b>Emission Type</b>	F3E
<b>Antenna Designation</b>	Detachable
<b>Antenna Gain</b>	2.15dBi
<b>Power Supply</b>	DC 7.4V 1800mAh, charging with DC 8.4V.
<b>Adapter Parameter</b>	INPUT:AC 100-240V~ 50/60Hz ,0.4A OUTPUT:DC 10V 0.5A
<b>Charger Parameter</b>	INPUT: DC 10V 0.5A OUTPUT:DC 8.4V 0.4A

### I/O Port Information (Applicable Not Applicable)

I/O Port of EUT			
I/O Port Type	Q'TY	Cable	Tested with
DC Input Port	1	1.14m, Unshielded	1
Antenna Connect Port	1	0	1

The results shown in this test report refer only to the sample(s) tested unless otherwise stated and the sample(s) are retained for 30 days only. The document is issued by AGC, this document cannot be reproduced except in full with our prior written permission. The more details and the authenticity of the report will be confirmed at <http://www.agc-cert.com>.

### 3. IDENTIFICATION OF THE RESPONSIBLE TESTING LOCATION

<b>Test Site</b>	Attestation of Global Compliance (Shenzhen) Co., Ltd
<b>Location</b>	1-2F., Bldg.2, No.1-4, Chaxi Sanwei Technical Industrial Park, Gushu, Xixiang, Bao'an District B112-B113, Bldg.12, Baoan Bldg Materials Center, No.1 of Xixiang Inner Ring Road, Baoan District, Shenzhen 518012
<b>NVLAP LAB CODE</b>	600153-0
<b>Designation Number</b>	CN5028
<b>FCC Test Firm Registration Number</b>	682566
<b>Description</b>	Attestation of Global Compliance(Shenzhen) Co., Ltd is accredited by National Voluntary Laboratory Accreditation program, NVLAP Code 600153-0

#### List Of Test Equipment:

##### TEST EQUIPMENT OF CONDUCTED EMISSION TEST

Equipment	Manufacturer	Model	S/N	Cal. Date	Cal. Due
TEST RECEIVER	R&S	ESCI	100096	Jun. 12, 2018	Jun. 11, 2019
AMN/LISN	R&S	ESH2-Z5	100086	Aug. 24, 2017	Aug. 23, 2018
TEST SOFTWARE	FR	EZ-EMC	AGC-CON03 A	--	--

##### TEST EQUIPMENT OF RADIATED EMISSION TEST

Equipment	Manufacturer	Model	S/N	Cal. Date	Cal. Due
TEST RECEIVER	R&S	ESPI	101206	Jun. 12, 2018	Jun. 11, 2019
ANTENNA	SCHWARZBECK	VULB9168	494	Sep. 27, 2017	Sep. 28, 2019
TEST RECEIVER	R&S	ESCI	100694	Jun. 12, 2018	Jun. 11, 2019
AMPLIFIER	Schwarzbeck	BBV 9718	9718-205	Jun. 12, 2018	Jun. 11, 2019
POSITIONING CONTROLLER	MF	MF-7802	MF780208285	--	--
HORN ANTENNA	ETS LINDGREN	3117	00034609	May. 17, 2017	May. 18, 2019

The results shown in this test report refer only to the sample(s) tested unless otherwise stated and the sample(s) are retained for 30 days only. The document is issued by AGC, this document cannot be reproduced except in full with our prior written permission. The more details and the authenticity of the report will be confirmed at <http://www.agc-cert.com>.

#### 4. SUPPORT EQUIPMENT LIST

Device Type	Manufacturer	Model Name	Serial No.	Data Cable	Power Cable
--	--	--	--	--	--

#### 5. SYSTEM DESCRIPTION

##### EUT test procedure:

1. Connect EUT and peripheral devices.
2. Power on the EUT, the EUT begins to work.
3. Make sure the EUT normal working.

##### EMC TEST MODES

No.	TEST MODES
1	Scanning mode
2	Scanning stopped/Receiving

**Note:** Only the result of the worst case was recorded in the report.

The results shown in this test report refer only to the sample(s) tested unless otherwise stated and the sample(s) are retained for 30 days only. The document is issued by AGC, this document cannot be reproduced except in full with our prior written permission. The more details and the authenticity of the report will be confirmed at <http://www.agc-cert.com>.

## 6. SUMMARY OF TEST RESULTS

FCC Rules	Description Of Test	Result
§15.107	Conduction Emission	Compliant
§15.109	Radiated Emission	Compliant
§15.111	Antenna Conducted Power for receivers	Compliant

The results shown in this test report refer only to the sample(s) tested unless otherwise stated and the sample(s) are retained for 30 days only. The document is issued by AGC, this document cannot be reproduced except in full with our prior written permission. The more details and the authenticity of the report will be confirmed at <http://www.agc-cert.com>.



## 7. FCC RADIATED EMISSION TEST

### 7.1. TEST EQUIPMENT OF RADIATED EMISSION

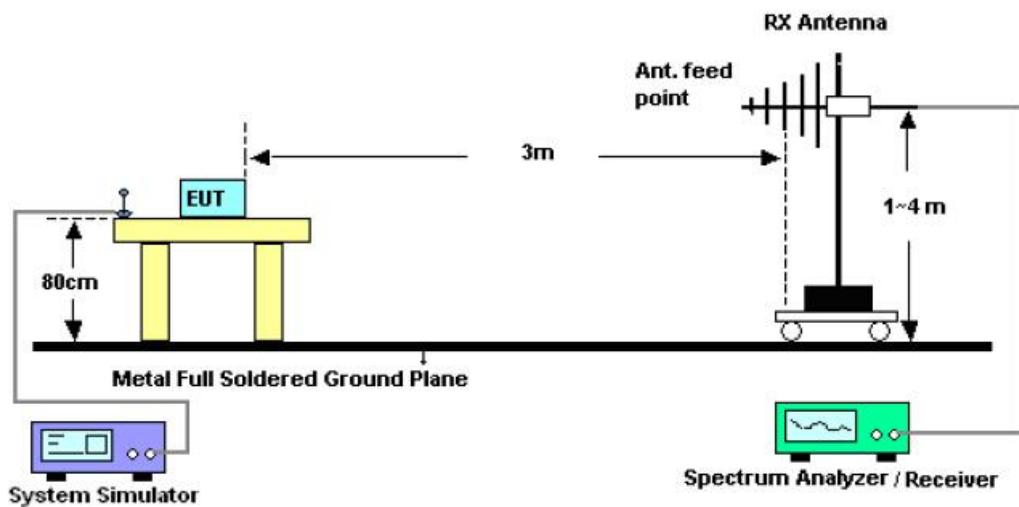
### 7.2. LIMITS OF RADIATED EMISSION TEST

Frequency (MHz)	Distance (m)	Maximum Field Strength Limit (dBuV/m/ Q.P.)
30~88	3	41.0
88~216	3	45.0
216~960	3	48.0
960~2000	3	53.5

\*\*Note: The lower limit shall apply at the transition frequency. Because the EUT RX frequency range up to 480 MHz, so the upper the frequency range up to 2 GHz.

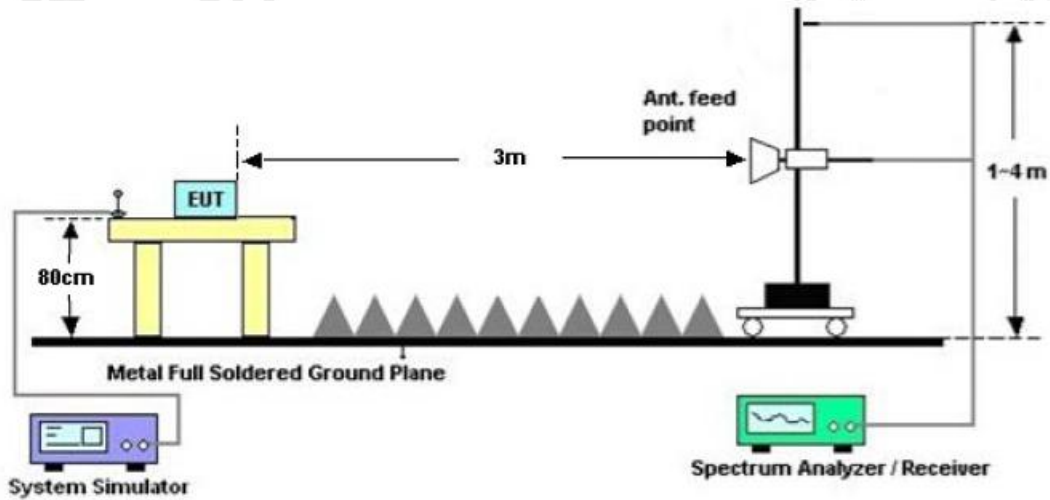
### 7.3 BLOCK DIAGRAM OF RADIATED EMISSION TEST

RADIATED EMISSION TEST SETUP 30MHz-1000MHz



The results shown in this test report refer only to the sample(s) tested unless otherwise stated and the sample(s) are retained for 30 days only. The document is issued by AGC, this document cannot be reproduced except in full with our prior written permission. The more details and the authenticity of the report will be confirmed at <http://www.agc-cert.com>.

RADIATED EMISSION TEST SETUP ABOVE 1000MHz



The results shown in this test report refer only to the sample(s) tested unless otherwise stated and the sample(s) are retained for 30 days only. The document is issued by AGC, this document cannot be reproduced except in full with our prior written permission. The more details and the authenticity of the report will be confirmed at <http://www.agc-cert.com>.

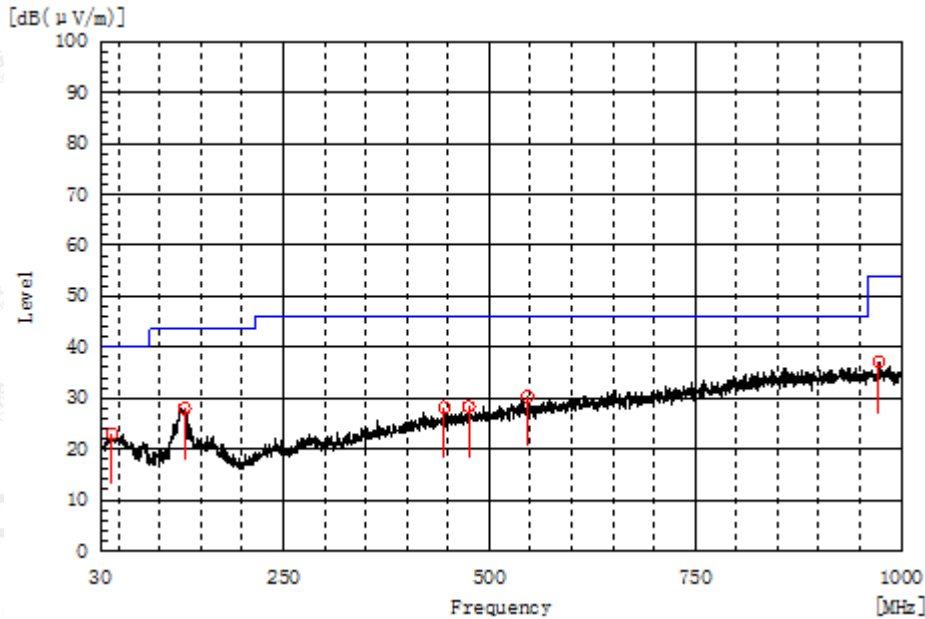
#### 7.4 PROCEDURE OF RADIATED EMISSION TEST

- 1) The equipment was set up as per the test configuration to simulate typical actual usage per the user's manual. When the EUT is a tabletop system, a wooden turntable with a height of 0.8 meters is used which is placed on the ground plane as per ANSI C63.4 (see Test Facility for the dimensions of the ground plane used). When the EUT is floor-standing equipment, it is placed on the ground plane which has a 3-12 mm non-conductive covering to insulate the EUT from the ground plane.
- 2) Support equipment, if needed, was placed as per ANSI C63.4.
- 3) All I/O cables were positioned to simulate typical actual usage as per ANSI C63.4.
- 4) The EUT received power by AC 120V/60Hz.
- 5) The antenna was placed at 3 meter away from the EUT as stated in FCC Part 15. The antenna connected to the Analyzer via a cable and at times a pre-amplifier would be used.
- 6) The Analyzer / Receiver quickly scanned from 30MHz to 1000MHz. The EUT test program was started. Emissions were scanned and measured rotating the EUT to 360 degrees and positioning the antenna 1 to 4 meters above the ground plane, in both the vertical and the horizontal polarization, to maximize the emission reading level.
- 7) The test mode(s) were scanned during the test:
- 8) Recorded at least the six highest emissions. Emission frequency, amplitude, antenna position, polarization and turntable position were recorded into a computer in which correction factors were used to calculate the emission level and compare reading to the applicable limit and Q.P./Peak reading is presented. For emissions below 1GHz, use 120KHz RBW and VBW $\geq$ 3RBW for QP reading.
- 9) For emissions above 1GHz, use 1MHz RBW and 3MHz VBW for peak reading. Then 1MHz RBW and 10Hz VBW for average reading in spectrum analyzer.
- 10) When the radiated emissions limits are expressed in terms of the average value of the emissions, and pulsed operation is employed, the measurement field strength shall be determined by averaging over one complete pulse train, including blanking intervals, as long as the pulse train does not exceed 0.1 seconds. As an alternative (provided the transmitter operates for longer than 0.1 seconds) or in cases where the pulse train exceeds 0.1 seconds, the measured field strength shall be determined from the average absolute voltage during a 0.1 second interval during which the field strength is at its maximum values.
- 11) If the emissions level of the EUT in peak mode was 3 dB lower than the average limit specified, then testing will be stopped and peak values of EUT will be reported, otherwise, the emissions which do not have 3 dB margin will be repeated one by one using the quasi-peak method for below 1GHz.
- 12) For testing above 1GHz, the emissions level of the EUT in peak mode was lower than average limit (that means the emissions level in peak mode also complies with the limit in average mode), then testing will be stopped and peak values of EUT will be reported, otherwise, the emissions will be measured in average mode again and reported.
- 13) In case the emission is lower than 30MHz, loop antenna has to be used for measurement and the recorded data should be QP measured by receiver. High - Low scan is not required in this case.
- 14) The test data of the worst case condition (mode 1) was reported on the following Data page

The results shown in this test report refer only to the sample(s) tested unless otherwise stated and the sample(s) are retained for 30 days only. The document is issued by AGC, this document cannot be reproduced except in full with our prior written permission. The more details and the authenticity of the report will be confirmed at <http://www.agc-cert.com>.

**7.5 TEST RESULT OF RADIATED EMISSION TEST**

Radiated Emission Test –Horizontal -3m Below 1G

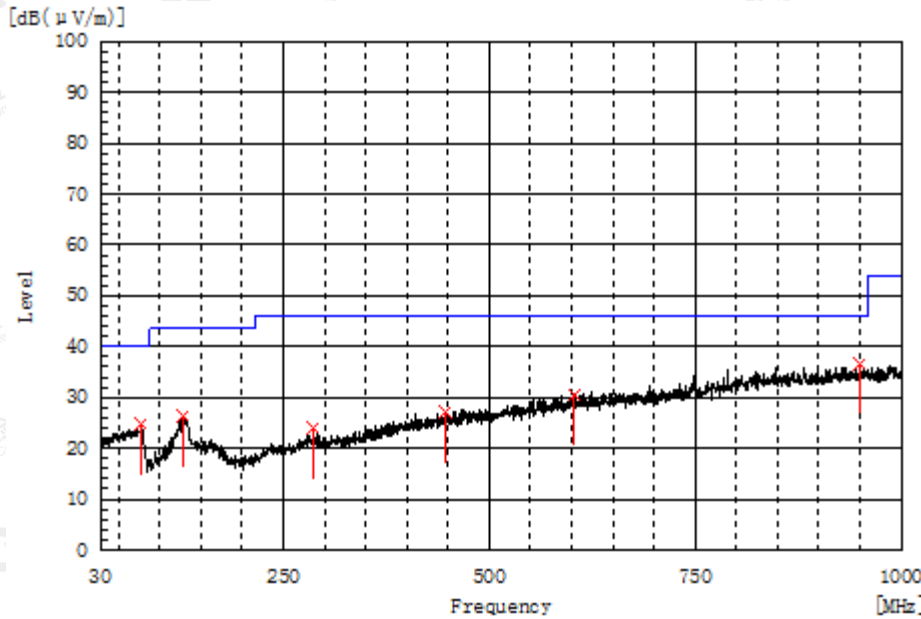


Frequency MHz	Polarization	Reading dB(uV)	Factor dB (1/m)	Level dB(uV/m) PK	Limit dB(uV/m) QP	Margin dB	Pass/Fail	Height cm	Angle deg
42.125	H	5.6	17.4	23.0	40.0	17.0	Pass	100.0	72.2
130.395	H	11.7	16.3	28.0	43.5	15.5	Pass	150.0	145.8
445.645	H	6.2	22.0	28.2	46.0	17.8	Pass	200.0	338.3
475.230	H	5.8	22.5	28.3	46.0	17.7	Pass	150.0	292.1
546.525	H	6.5	23.8	30.3	46.0	15.7	Pass	200.0	122.3
972.840	H	6.2	30.9	37.1	54.0	16.9	Pass	100.0	72.2

**RESULT: PASS**

The results shown in this test report refer only to the sample(s) tested unless otherwise stated and the sample(s) are retained for 30 days only. The document is issued by AGC, this document cannot be reproduced except in full with our prior written permission. The more details and the authenticity of the report will be confirmed at <http://www.agc-cert.com>.

Radiated Emission Test –Vertical -3m Below 1G



Frequency MHz	Polarization	Reading dB(uV)	Factor dB (1/m)	Level dB(uV/m) PK	Limit dB(uV/m) QP	Margin dB	Pass/Fail	Height cm	Angle deg
77.045	V	12.2	12.5	24.7	40.0	15.3	Pass	200.0	267.7
128.455	V	10.3	16.1	26.4	43.5	17.1	Pass	200.0	303.9
286.080	V	6.3	17.7	24.0	46.0	22.0	Pass	100.0	251.3
447.585	V	5.1	22.0	27.1	46.0	18.9	Pass	150.0	217.5
603.270	V	5.5	25.0	30.5	46.0	15.5	Pass	100.0	71.4
949.560	V	5.9	30.7	36.6	46.0	9.4	Pass	150.0	289.6

**RESULT: PASS**

- Note:**
1. Factor=Antenna Factor + Cable loss - Amplifier gain, Margin=Measurement-Limit.
  2. The "Factor" value can be calculated automatically by software of measurement system.
  3. Emissions range from 1GHz to 2GHz have 20dB margin. No recording in the test report.
  4. Only the data of the worst case would be record in this test report.

The results shown in this test report refer only to the sample(s) tested unless otherwise stated and the sample(s) are retained for 30 days only. The document is issued by AGC, this document cannot be reproduced except in full with our prior written permission. The more details and the authenticity of the report will be confirmed at <http://www.agc-cert.com>.

## 8. CONDUCTED EMISSION TEST

### 8.1 PROVISIONS APPLICABLE

For an intentional radiator that is designed to be connected to the public utility (AC) power line, the radio frequency voltage that is conducted back onto the AC power line on any frequencies within the band 150 KHz to 30 MHz shall not exceed the limits in the following table, as measured using a 50uH/50 ohms line impedance stabilization network (LISN). Compliance with the provisions of this paragraph shall be based on the measurement of the radio frequency voltage between each power line and ground at the power terminal. The lower limit applies at the boundary between the frequencies ranges.

Frequency of Emission (MHz)	Conducted Limit(dBuV)	
	Quasi-Peak	Average
0.15 – 0.5	66 to 56 *	56 to 46 *
0.5 – 5	56	46
5 – 30	60	50

\* Decreases with the logarithm of the frequency.

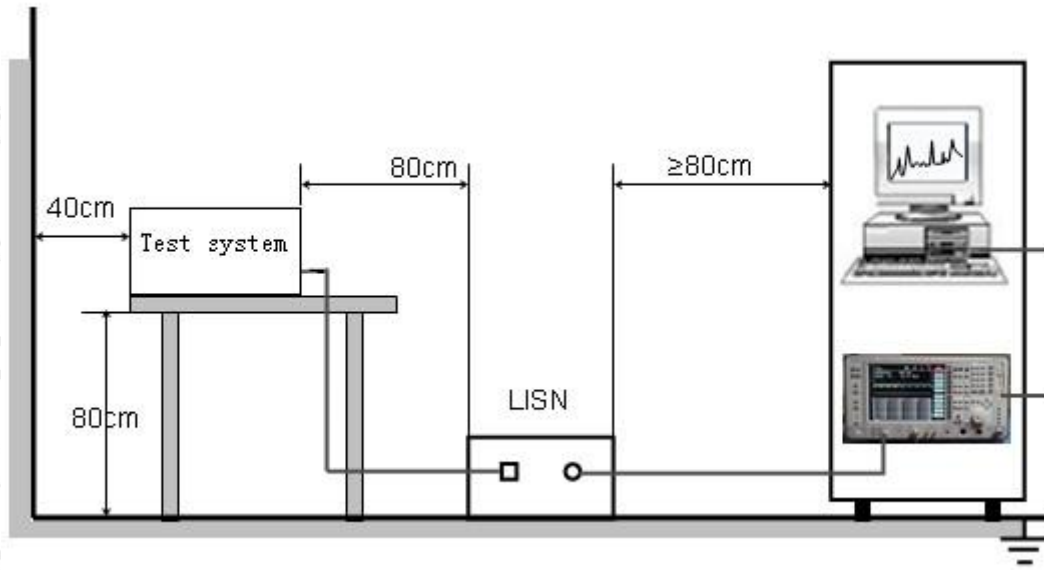
### 8.2 MEASUREMENT PROCEDURE

- (1) The equipment was set up as per the test configuration to simulate typical actual usage per the user's manual. When the EUT is a tabletop system, a wooden table with a height of 0.8 meters is used and is placed on the ground plane as per ANSI C63.4 (see Test Facility for the dimensions of the ground plane used). When the EUT is a floor-standing equipment, it is placed on the ground plane which has a 3-12 mm non-conductive covering to insulate the EUT from the ground plane.
- (2) Support equipment, if needed, was placed as per ANSI C63.4.
- (3) All I/O cables were positioned to simulate typical actual usage as per ANSI C63.4.
- (4) The EUT received AC 120V/60Hz power through a Line Impedance Stabilization Network (LISN) which supplied power source and was grounded to the ground plane.
- (5) All support equipments received AC power from a second LISN, if any.
- (6) The EUT test program was started. Emissions were measured on each current carrying line of the EUT using a spectrum Analyzer / Receiver connected to the LISN powering the EUT. The LISN has two monitoring points: Line 1 (Hot Side) and Line 2 (Neutral Side). Two scans were taken: one with Line 1 connected to Analyzer / Receiver and Line 2 connected to a 50 ohm load; the second scan had Line 1 connected to a 50 ohm load and Line 2 connected to the Analyzer / Receiver.
- (7) Analyzer / Receiver scanned from 150 KHz to 30MHz for emissions in each of the test modes.

During the above scans, the emissions were maximized by cable manipulation.

The results shown in this test report refer only to the sample(s) tested unless otherwise stated and the sample(s) are retained for 30 days only. The document is issued by AGC, this document cannot be reproduced except in full with our prior written permission. The more details and the authenticity of the report will be confirmed at <http://www.agc-cert.com>.

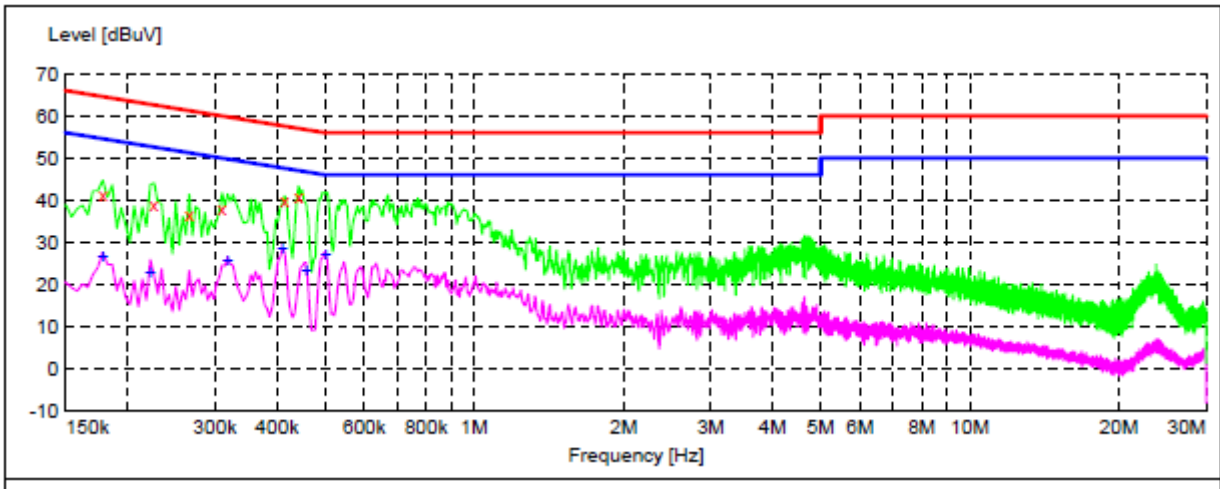
**8.3 TEST SETUP BLOCK DIAGRAM**



The results shown in this test report refer only to the sample(s) tested unless otherwise stated and the sample(s) are retained for 30 days only. The document is issued by AGC, this document cannot be reproduced except in full with our prior written permission. The more details and the authenticity of the report will be confirmed at <http://www.agc-cert.com>.

**8.4 TEST RESULT**

**CONDUCTED EMISSION TEST – LINE L**



**MEASUREMENT RESULT:**

Frequency MHz	Level dBUV	Transd dB	Limit dBUV	Margin dB	Detector	Line	PE
0.178000	41.20	10.0	65	23.4	QP	L1	FLO
0.226000	39.00	10.1	63	23.6	QP	L1	FLO
0.266000	36.60	10.1	61	24.6	QP	L1	FLO
0.310000	38.20	10.1	60	21.8	QP	L1	FLO
0.414000	40.10	10.0	58	17.5	QP	L1	FLO
0.442000	40.80	10.0	57	16.2	QP	L1	FLO

**MEASUREMENT RESULT:**

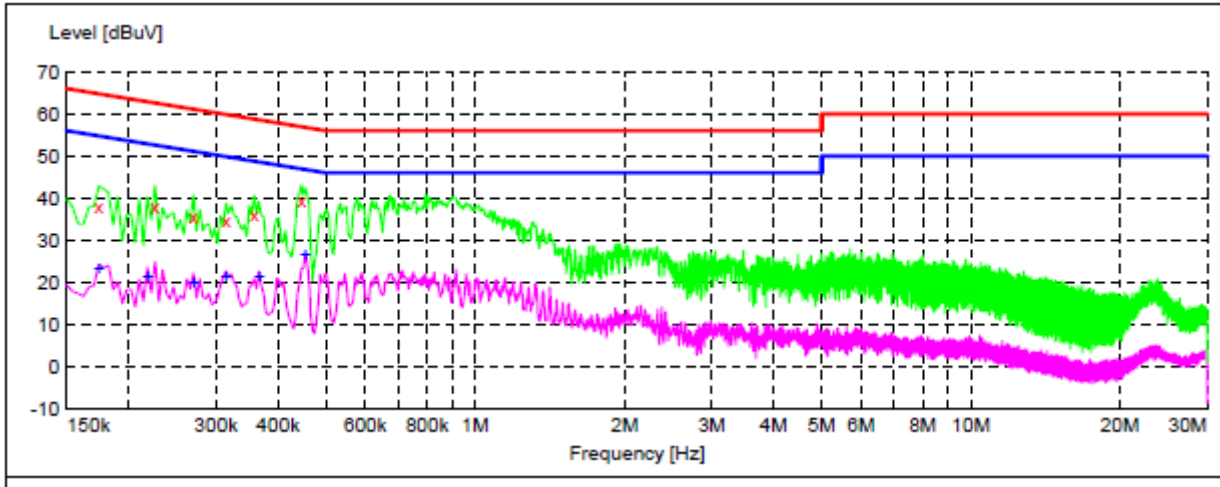
Frequency MHz	Level dBUV	Transd dB	Limit dBUV	Margin dB	Detector	Line	PE
0.178000	26.60	10.0	55	28.0	AV	L1	FLO
0.222000	22.70	10.1	53	30.0	AV	L1	FLO
0.318000	25.70	10.1	50	24.1	AV	L1	FLO
0.410000	28.60	10.0	48	19.0	AV	L1	FLO
0.458000	23.20	10.0	47	23.5	AV	L1	FLO
0.502000	26.80	9.9	46	19.2	AV	L1	FLO

**RESULT: PASS**

The results shown in this test report refer only to the sample(s) tested otherwise stated and the sample(s) are retained for 30 days only. The document is issued by AGC, this document cannot be reproduced except in full with our prior written permission. The more details and the authenticity of the report will be confirmed at <http://www.agc-cert.com>.



CONDUCTED EMISSION TEST – LINE N



**MEASUREMENT RESULT:**

Frequency MHz	Level dBuV	Transd dB	Limit dBuV	Margin dB	Detector	Line	PE
0.174000	38.10	10.0	65	26.7	QP	N	FLO
0.226000	37.80	10.1	63	24.8	QP	N	FLO
0.270000	35.40	10.1	61	25.7	QP	N	FLO
0.314000	34.80	10.1	60	25.1	QP	N	FLO
0.358000	36.20	10.0	59	22.6	QP	N	FLO
0.446000	39.60	10.0	57	17.3	QP	N	FLO

**MEASUREMENT RESULT:**

Frequency MHz	Level dBuV	Transd dB	Limit dBuV	Margin dB	Detector	Line	PE
0.174000	23.40	10.0	55	31.4	AV	N	FLO
0.218000	21.20	10.1	53	31.7	AV	N	FLO
0.270000	20.10	10.1	51	31.0	AV	N	FLO
0.314000	21.50	10.1	50	28.4	AV	N	FLO
0.366000	21.50	10.0	49	27.1	AV	N	FLO
0.454000	26.40	10.0	47	20.4	AV	N	FLO

**RESULT: PASS**

The results shown in this test report refer only to the sample(s) tested otherwise stated and the sample(s) are retained for 30 days only. The document is issued by AGC, this document cannot be reproduced except in full with our prior written permission. The more details and the authenticity of the report will be confirmed at <http://www.agc-cert.com>.

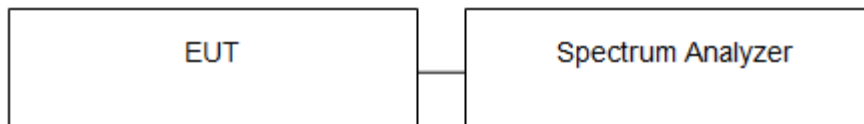
## 9. ANTENNA CONDUCTED POWER FOR RECEIVERS

### LIMIT

The antenna conducted power of the receiver as defined in §15.111 shall not exceed the values given in the following tables

Frequency Range	9 KHz to 2GHz
Limit	2.0 nW (-57 dBm )

### TEST CONFIGURATION



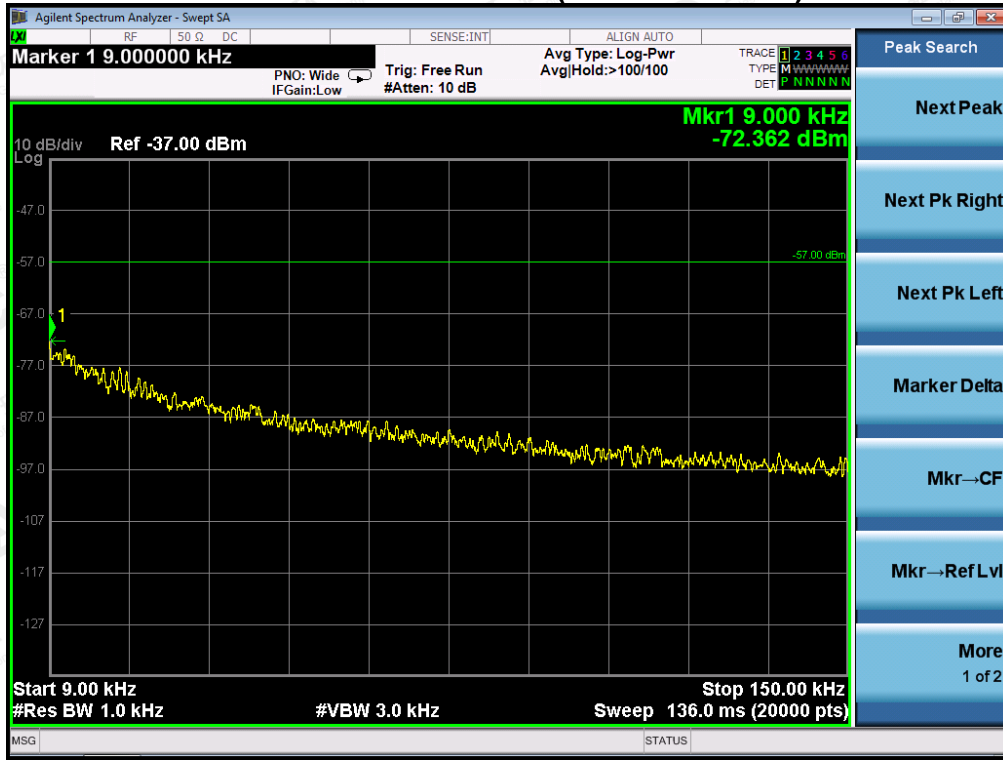
### TEST PROCEDURE

1. The receiver antenna terminal connected to a spectrum analyzer.
2. The test data of the worst case condition (mode 1) was reported on the following Data page.

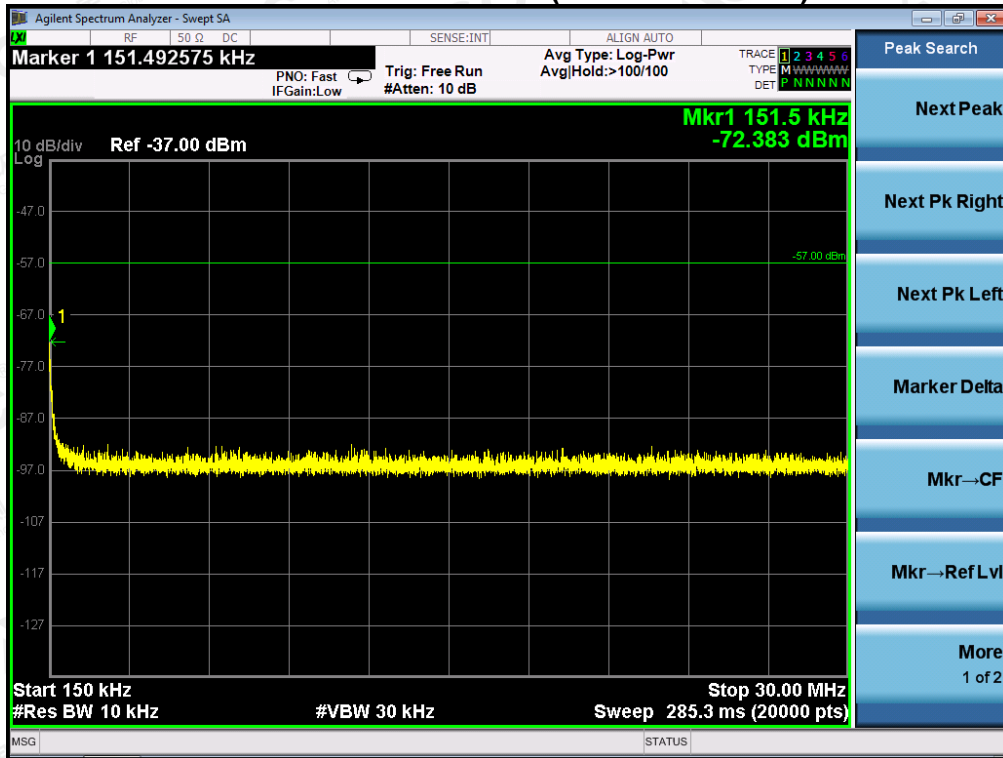
The results shown in this test report refer only to the sample(s) tested unless otherwise stated and the sample(s) are retained for 30 days only. The document is issued by AGC, this document cannot be reproduced except in full with our prior written permission. The more details and the authenticity of the report will be confirmed at <http://www.agc-cert.com>.

**TEST RESULTS**

**Conducted Measurement (9 KHz to 150 KHz)**

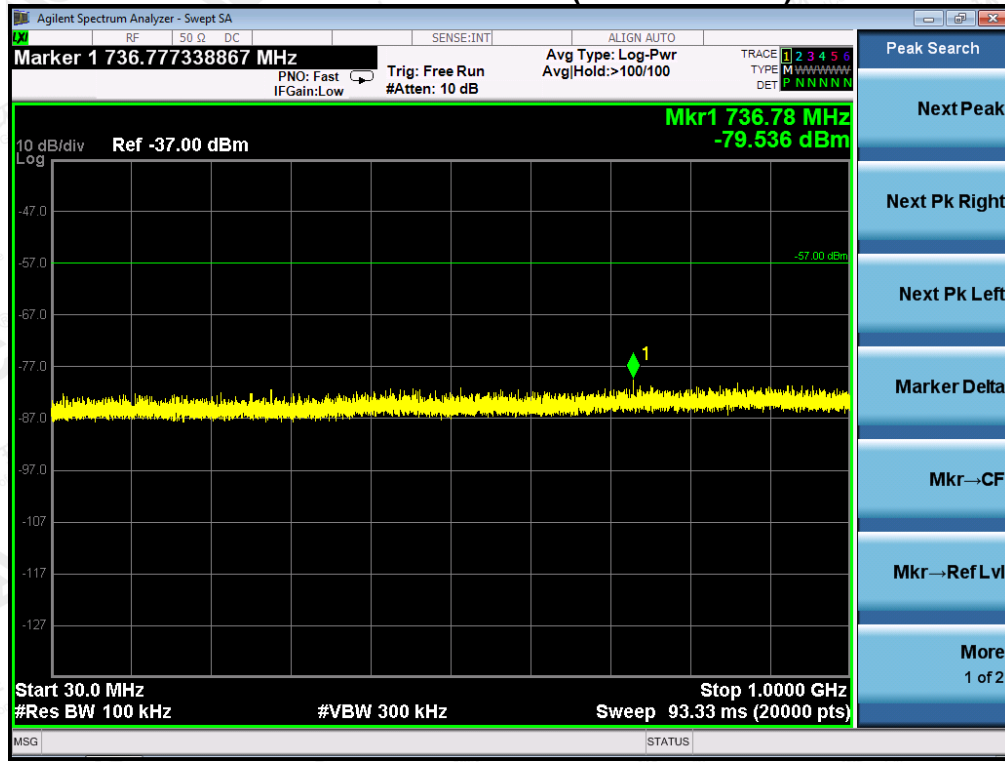


**Conducted Measurement (150 KHz to 30MHz)**

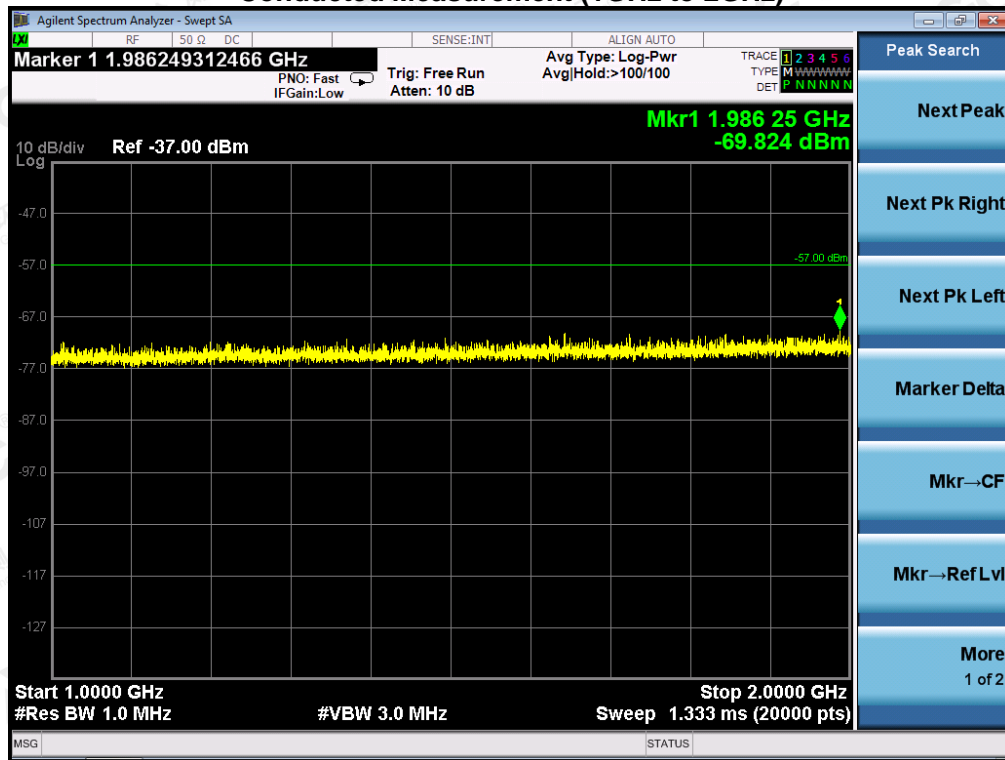


The results shown in this test report refer only to the sample(s) tested unless otherwise stated and the sample(s) are retained for 30 days only. The document is issued by AGC, this document cannot be reproduced except in full with our prior written permission. The more details and the authenticity of the report will be confirmed at <http://www.agc-cert.com>.

**Conducted Measurement (30MHz to 1GHz)**



**Conducted Measurement (1GHz to 2GHz)**



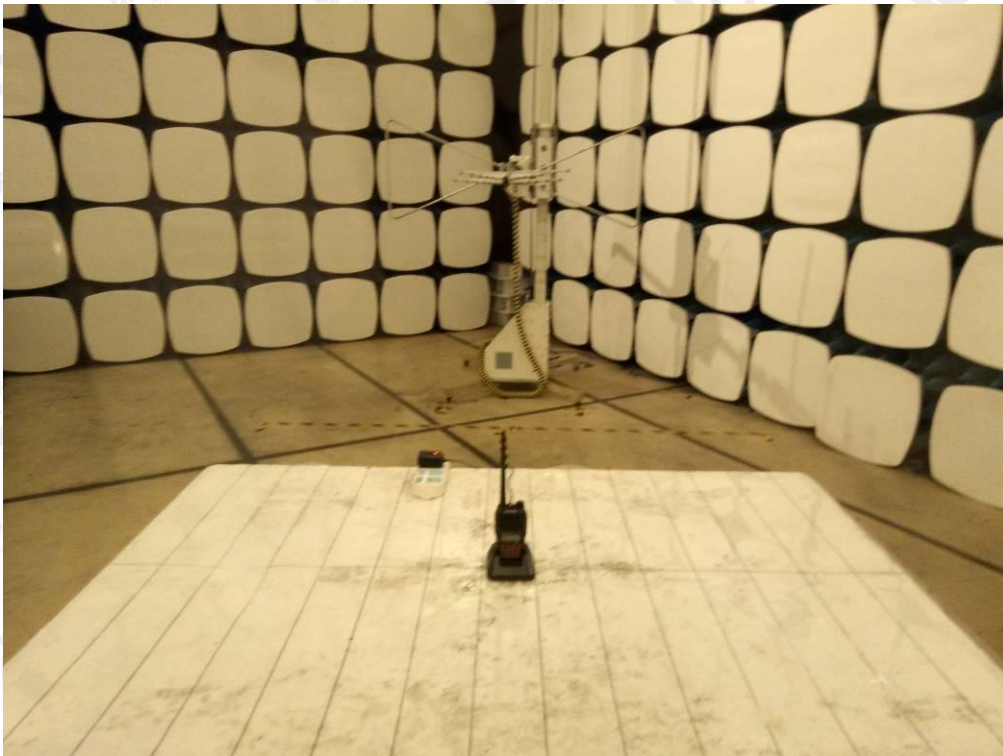
**PASS**

The results shown in this test report refer only to the sample(s) tested unless otherwise stated and the sample(s) are retained for 30 days only. The document is issued by AGC, this document cannot be reproduced except in full with our prior written permission. The more details and the authenticity of the report will be confirmed at <http://www.agc-cert.com>.

**APPENDIX 1 PHOTOGRAPHS OF TEST SETUP**  
**CONDUCTED EMISSION TEST SETUP**



**RADIATED EMISSION TEST SETUP**



The results shown in this test report refer only to the sample(s) tested unless otherwise stated and the sample(s) are retained for 30 days only. The document is issued by AGC, this document cannot be reproduced except in full with our prior written permission. The more details and the authenticity of the report will be confirmed at <http://www.agc-cert.com>.

**APPENDIX 2 PHOTOGRAPHS OF EUT**  
TOTAL VIEW OF EUT



TOP VIEW OF EUT



The results shown in this test report refer only to the sample(s) tested unless otherwise stated and the sample(s) are retained for 30 days only. The document is issued by AGC, this document cannot be reproduced except in full with our prior written permission. The more details and the authenticity of the report will be confirmed at <http://www.agc-cert.com>.

BOTTOM VIEW OF EUT



FRONT VIEW OF EUT



The results shown in this test report refer only to the sample(s) tested unless otherwise stated and the sample(s) are retained for 30 days only. The document is issued by AGC, this document cannot be reproduced except in full with our prior written permission. The more details and the authenticity of the report will be confirmed at <http://www.agc-cert.com>.

BACK VIEW OF EUT



LEFT VIEW OF EUT



The results shown in this test report refer only to the sample(s) tested unless otherwise stated and the sample(s) are retained for 30 days only. The document is issued by AGC, this document cannot be reproduced except in full with our prior written permission. The more details and the authenticity of the report will be confirmed at <http://www.agc-cert.com>.



RIGHT VIEW OF EUT

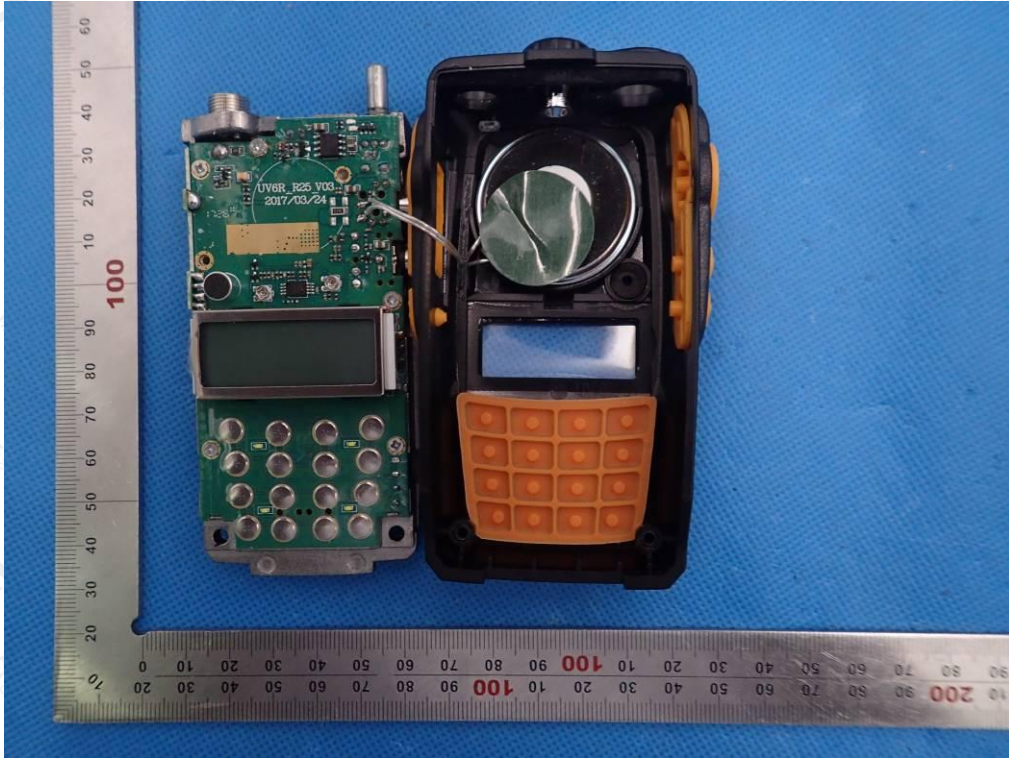


OPEN VIEW-1 OF EUT

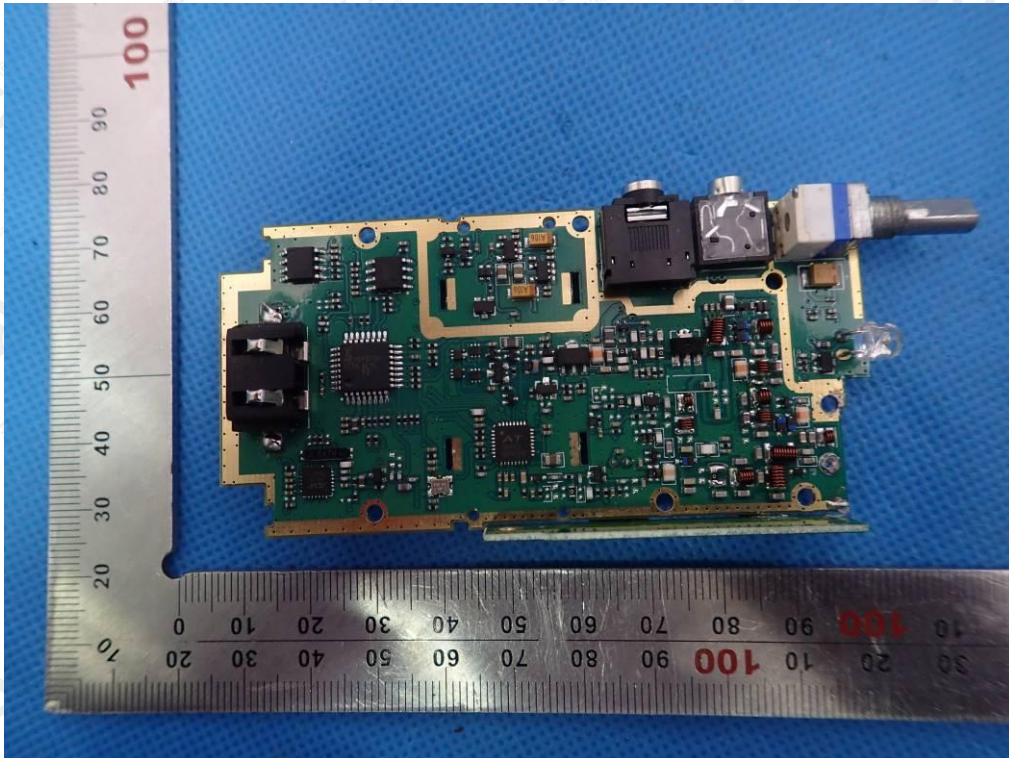


The results shown in this test report refer only to the sample(s) tested unless otherwise stated and the sample(s) are retained for 30 days only. The document is issued by AGC, this document cannot be reproduced except in full with our prior written permission. The more details and the authenticity of the report will be confirmed at <http://www.agc-cert.com>.

INTERNAL VIEW-1 OF EUT

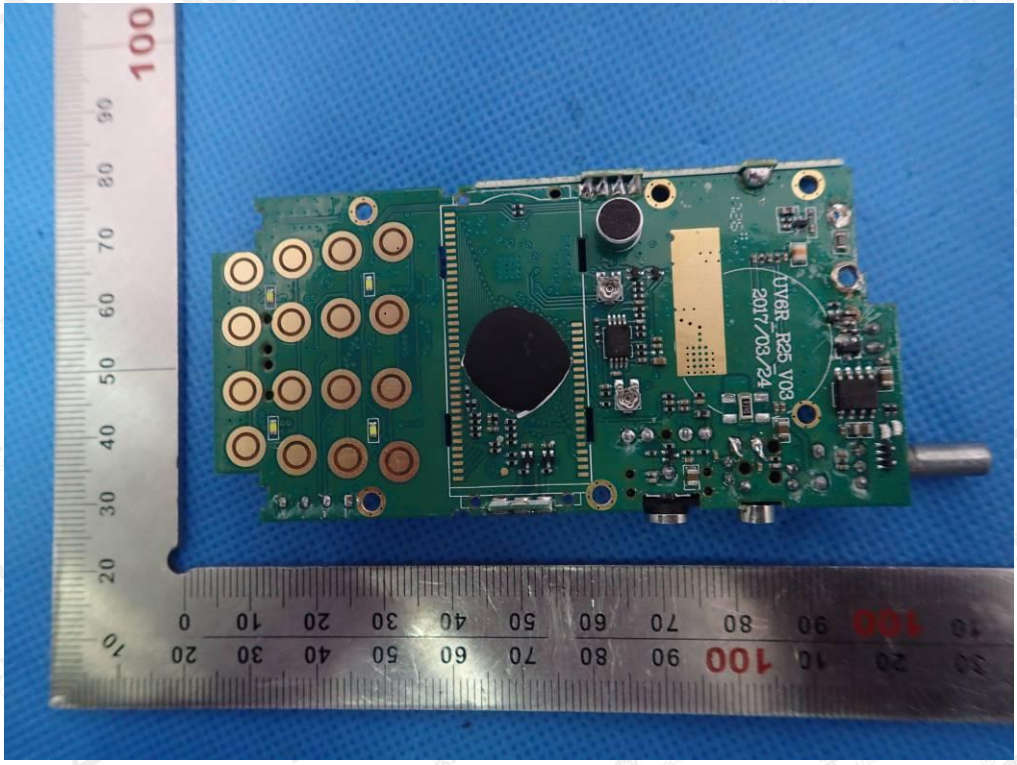


INTERNAL VIEW-2 OF EUT

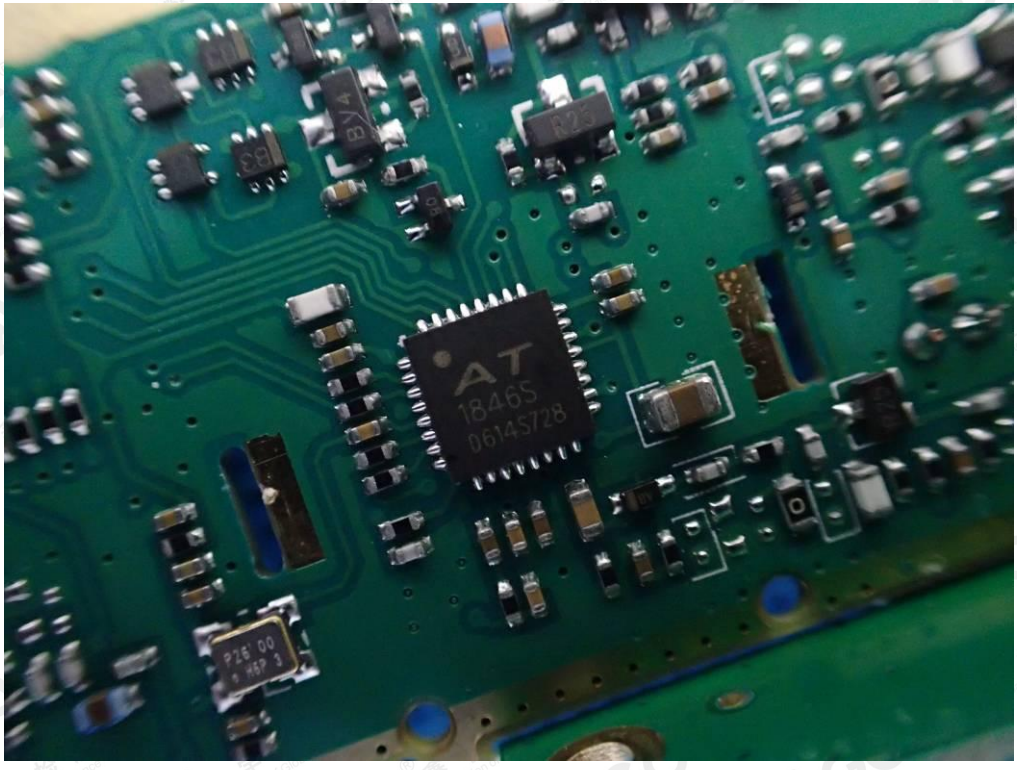


The results shown in this test report refer only to the sample(s) tested unless otherwise stated and the sample(s) are retained for 30 days only. The document is issued by AGC, this document cannot be reproduced except in full with our prior written permission. The more details and the authenticity of the report will be confirmed at <http://www.agc-cert.com>.

INTERNAL VIEW-3 OF EUT

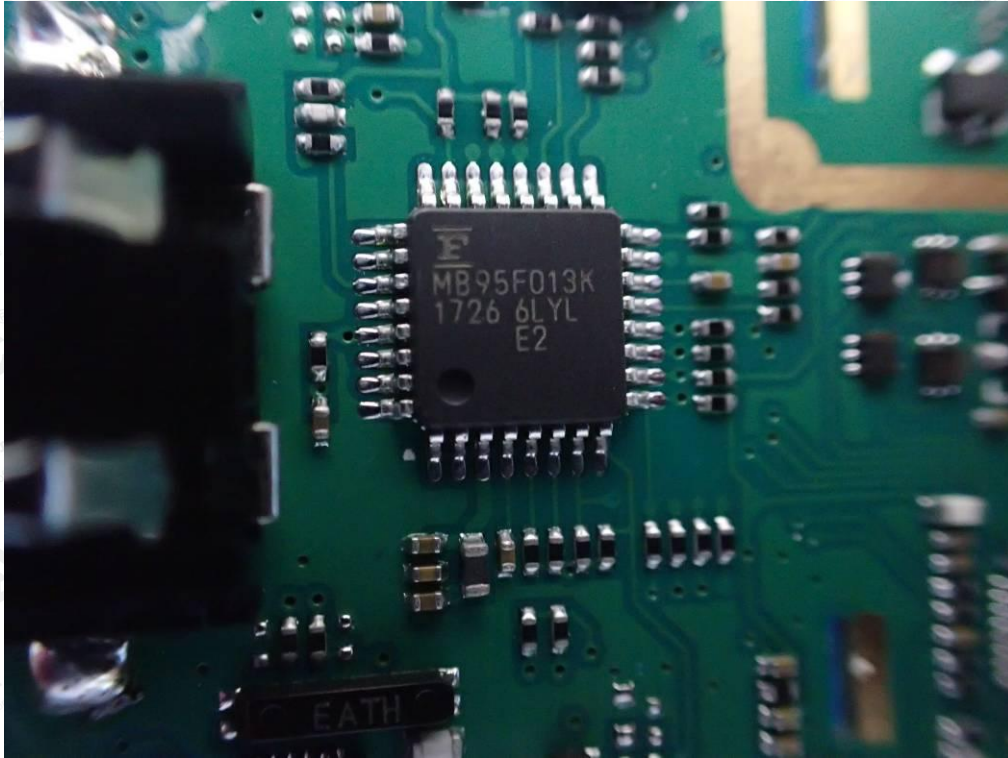


INTERNAL VIEW-4 OF EUT

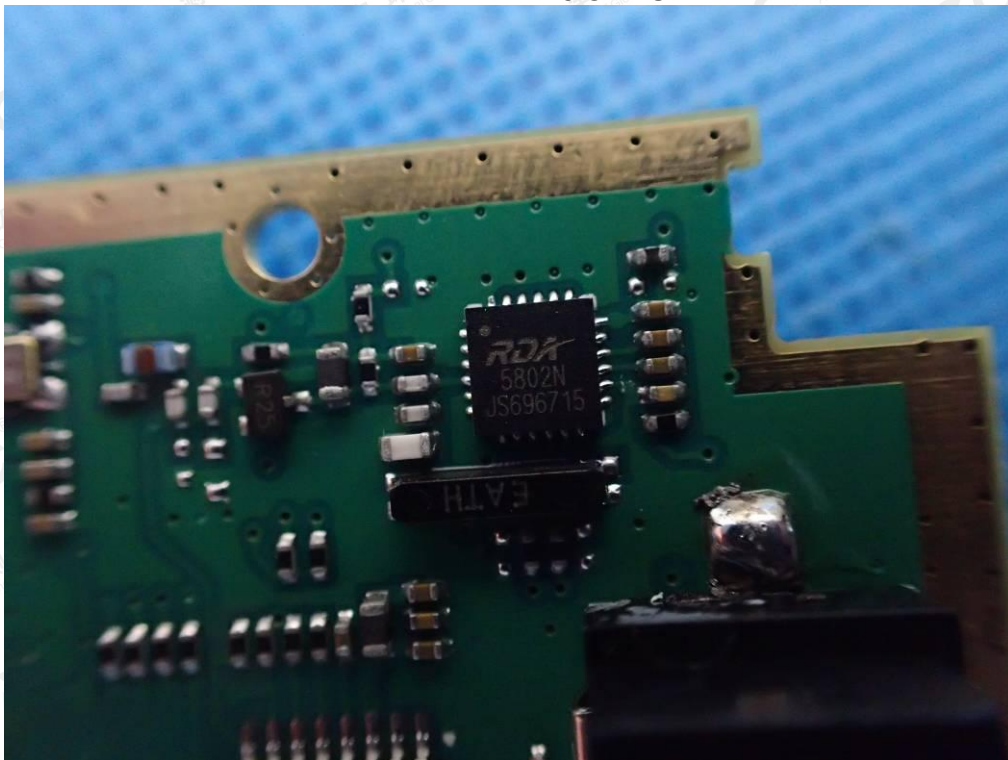


The results shown in this test report refer only to the sample(s) tested unless otherwise stated and the sample(s) are retained for 30 days only. The document is issued by AGC, this document cannot be reproduced except in full with our prior written permission. The more details and the authenticity of the report will be confirmed at <http://www.agc-cert.com>.

INTERNAL VIEW-5 OF EUT



INTERNAL VIEW-6 OF EUT



----END OF REPORT----

The results shown in this test report refer only to the sample(s) tested unless otherwise stated and the sample(s) are retained for 30 days only. The document is issued by AGC, this document cannot be reproduced except in full with our prior written permission. The more details and the authenticity of the report will be confirmed at <http://www.agc-cert.com>.