

---

# FCC Test Report

---

Report No.: AGC02294190701FE08

**FCC ID** : 2AJGM-UV-E70  
**PRODUCT DESIGNATION** : PORTABLE RADIO  
**BRAND NAME** : BAOFENG, Pofung  
**MODEL NAME** : UV-E70,ZT-60UV,GT-A60,TC-688,AR-2UV,RH-UV2,  
TR-988UV,TF-558,BF-TC70,UV-E80  
**APPLICANT** : PO FUNG ELECTRONIC(HK) INTERNATIOANL  
GROUP COMPANY  
**DATE OF ISSUE** : July 24, 2019  
**STANDARD(S)** : FCC Part 15 Rules  
**REPORT VERSION** : V 1.0

## Attestation of Global Compliance (Shenzhen) Co., Ltd

**CAUTION:**

This report shall not be reproduced except in full without the written permission of the test laboratory and shall not be quoted out of context.



Attestation of Global Compliance(Shenzhen)Co.,Ltd.

Add: 2/F., Building 2, No.1-4, Chaxi Sanwei Technial Industrial Park, Gushu,  
Xixiang, Bao'an District, Shenzhen, Guangdong, China

Tel: +86-755 2523 4088

E-mail: agc@agc-cert.com

Service Hotline:400 089 2118

**Report Revise Record**

| Report Version | Revise Time | Issued Date   | Valid Version | Notes           |
|----------------|-------------|---------------|---------------|-----------------|
| V1.0           | /           | July 24, 2019 | Valid         | Initial Release |



Attestation of Global Compliance(Shenzhen)Co.,Ltd.

Add: 2/F., Building 2, No.1-4, Chaxi Sanwei Technial Industrial Park, Gushu,  
Xixiang, Bao'an District, Shenzhen, Guangdong, China

Tel: +86-755 2523 4088

E-mail: agc@agc-cert.com

Service Hotline:400 089 2118

## TABLE OF CONTENTS

|  |           |
|--|-----------|
| <b>1. VERIFICATION OF COMPLIANCE</b> .....   | <b>4</b>  |
| <b>2. PRODUCT INFORMATION</b> .....  | <b>5</b>  |
| <b>3. IDENTIFICATION OF THE RESPONSIBLE TESTING LOCATION</b> .....                       | <b>6</b>  |
| <b>4. SUPPORT EQUIPMENT LIST</b> .....   | <b>7</b>  |
| <b>5. SYSTEM DESCRIPTION</b> .....   | <b>7</b>  |
| <b>6. SUMMARY OF TEST RESULTS</b> .....  | <b>8</b>  |
| <b>7. FCC RADIATED EMISSION TEST</b> .....   | <b>9</b>  |
| 7.1. TEST EQUIPMENT OF RADIATED EMISSION .....   | 9         |
| 7.2. LIMITS OF RADIATED EMISSION TEST .....  | 9         |
| 7.3 BLOCK DIAGRAM OF RADIATED EMISSION TEST .....  | 9         |
| 7.4 PROCEDURE OF RADIATED EMISSION TEST .....  | 11        |
| 7.5 TEST RESULT OF RADIATED EMISSION TEST .....  | 12        |
| <b>8. CONDUCTED EMISSION TEST</b> .....  | <b>14</b> |
| 8.1 PROVISIONS APPLICABLE .....  | 14        |
| 8.2 MEASUREMENT PROCEDURE .....  | 14        |
| 8.3 TEST SETUP BLOCK DIAGRAM .....   | 15        |
| 8.4 TEST RESULT .....  | 16        |
| <b>9. ANTENNA CONDUCTED POWER FOR RECEIVERS</b> .....                                    | <b>18</b> |
| <b>10. SANNING RECEIVERS AND FREQUENCY CONVERTERS USED WITH SANNING RECEIVERS.</b> ..... | <b>21</b> |
| <b>APPENDIX 1 PHOTOGRAPHS OF TEST SETUP</b> .....  | <b>23</b> |
| <b>APPENDIX 2 PHOTOGRAPHS OF EUT</b> .....   | <b>25</b> |



## 1. VERIFICATION OF COMPLIANCE

|                                 |   |
|---------------------------------|---|
| <b>Applicant</b>                | PO FUNG ELECTRONIC(HK) INTERNATIOANL GROUP COMPANY                                      |
| <b>Address</b>                  | 3/F FULOK BLDG 131-133 WING LOK ST SHEUNG WAN, Hong Kong                                |
| <b>Manufacturer</b>             | PO FUNG ELECTRONIC(HK) INTERNATIOANL GROUP COMPANY                                      |
| <b>Address</b>                  | 3/F FULOK BLDG 131-133 WING LOK ST SHEUNG WAN, Hong Kong                                |
| <b>Factory</b>                  | PO FUNG ELECTRONIC(HK) INTERNATIOANL GROUP COMPANY                                      |
| <b>Address</b>                  | 3/F FULOK BLDG 131-133 WING LOK ST SHEUNG WAN, Hong Kong                                |
| <b>Product Designation</b>      | PORTABLE RADIO  |
| <b>Brand name</b>               | BAOFENG, Pofung   |
| <b>Test Model</b>               | UV-E70  |
| <b>Serial Model</b>             | ZT-60UV,GT-A60,TC-688,AR-2UV,RH-UV2,TR-988UV,TF-558,BF-TC70,UV-E80                      |
| <b>Serial Model Difference</b>  | Same product, different models and trademarks, only the shell design style is different |
| <b>Hardware Version</b>         | WT-BF-T60-V03   |
| <b>Software Version</b>         | V1.0.0.0  |
| <b>Measurement Procedure</b>    | ANSI C63.4: 2014  |
| <b>Date of test:</b>            | July 05, 2019 to July 23, 2019  |
| <b>Deviation:</b>               | None  |
| <b>Condition of Test Sample</b> | Normal  |

The above equipment was tested by Attestation Of Global Compliance (Shenzhen) Co., Ltd. for compliance with the requirements set forth in the FCC Rules and Regulations Part 15, the measurement procedure according to ANSI C63.4:2014. This said equipment in the configuration described in this report shows the maximum emission levels emanating from equipment are within the compliance requirements.

The test results of this report relate only to the tested sample identified in this report.

Tested By



Calvin Liu(Liu Junchen) July 23, 2019

Reviewed By



Max Zhang(Zhang Yi) July 24, 2019

Approved By



Forrest Lei(Lei Yonggang)  
Authorized Officer July 24, 2019



## 2. PRODUCT INFORMATION

The EUT is a **PORTABLE RADIO** designed for voice communication. It is designed by way of utilizing the F3E modulation achieves the system operating.

A major technical description of EUT is described as following:

|                            |  |
|----------------------------|--|
| <b>Communication Type</b>  | Voice / Tone only                                      |
| <b>Modulation</b>          | FM   |
| <b>RX Frequency Range</b>  | Rx:136 MHz -174 MHz, 400MHz -480MHz                    |
| <b>Emission Type</b>       | F3E  |
| <b>Antenna Designation</b> | Detachable   |
| <b>Antenna Gain</b>        | 2.15dBi  |
| <b>Power Supply</b>        | DC 7.4V 2800mAh, charging with DC 8.4V.                |
| <b>Adapter Parameter</b>   | INPUT:AC 110-240V~ 50/60Hz ,0.3A<br>OUTPUT:DC 10V 0.5A |
| <b>Charger Parameter</b>   | INPUT: DC 10V 0.5A<br>OUTPUT:DC 8.4V 0.4A              |

I/O Port Information (Applicable Not Applicable)

| I/O Port of EUT      |      |       |             |
|----------------------|------|-------|-------------|
| I/O Port Type        | Q'TY | Cable | Tested with |
| Antenna Connect Port | 1    | 0     | 1           |



Attestation of Global Compliance(Shenzhen)Co.,Ltd.

Add: 2/F., Building 2, No.1-4, Chaxi Sanwei Technial Industrial Park, Gushu,  
Xixiang, Bao'an District, Shenzhen, Guangdong, China

Tel: +86-755 2523 4088

E-mail: agc@agc-cert.com

Service Hotline:400 089 2118

### 3. IDENTIFICATION OF THE RESPONSIBLE TESTING LOCATION

|  |  |
|--|--|
| <b>Test Site</b>                         | Attestation of Global Compliance (Shenzhen) Co., Ltd   |
| <b>Location</b>                          | 1-2/F, Building 19, Junfeng Industrial Park, Chongqing Road, Heping Community, Fuhai Street, Bao'an District, Shenzhen, Guangdong, China |
| <b>Designation Number</b>                | CN1259   |
| <b>FCC Test Firm Registration Number</b> | 975832   |
| <b>A2LA Cert. No.</b>                    | 5054.02  |
| <b>Description</b>                       | Attestation of Global Compliance(Shenzhen) Co., Ltd is accredited by A2LA  |

#### List Of Test Equipment:

##### TEST EQUIPMENT OF CONDUCTED EMISSION TEST

| Equipment     | Manufacturer | Model   | S/N    | Cal. Date     | Cal. Due      |
|---------------|--------------|---------|--------|---------------|---------------|
| TEST RECEIVER | R&S          | ESPI    | 101206 | Jun. 12, 2019 | Jun. 11, 2020 |
| LISN          | R&S          | ESH2-Z5 | 100086 | Aug.19, 2018  | Aug.18, 2019  |

##### TEST EQUIPMENT OF RADIATED EMISSION TEST

| Equipment                    | Manufacturer   | Model       | S/N        | Cal. Date     | Cal. Due      |
|------------------------------|----------------|-------------|------------|---------------|---------------|
| TEST RECEIVER                | R&S            | ESCI        | 10096      | Jun. 12, 2019 | Jun. 11, 2020 |
| EXA Signal Analyzer          | Aglient        | N9010A      | MY53470504 | Dec.06, 2018  | Dec.05, 2019  |
| Horn antenna                 | SCHWARZBECK    | BBHA 9170   | #768       | Sep.20, 2018  | Sep.19, 2020  |
| preamplifier                 | ChengYi        | EMC184045SE | 980508     | Sep.20, 2018  | Sep.19, 2020  |
| Double-Ridged Waveguide Horn | ETS LINDGREN   | 3117        | 00034609   | May.17, 2019  | May.16, 2021  |
| Broadband Preamplifier       | SCHWARZBECK    | BBV 9718    | 9718-205   | Jun. 12, 2019 | Jun. 11, 2020 |
| ANTENNA                      | SCHWARZBECK    | VULB9168    | D69250     | Sep.20, 2018  | Sep.19, 2020  |
| Attenuator                   | Weinachel Corp | 58-30-33    | ML030      | Jul. 12, 2018 | Jul. 11, 2019 |
| Attenuator                   | Weinachel Corp | 58-30-33    | ML030      | Jul. 10, 2019 | Jul. 09, 2020 |
| RF Communication Test Set    | HP             | 8920B       | --         | Nov. 01, 2018 | Oct. 31, 2019 |
| Vector Analyzer              | Agilent        | E4440A      | --         | Feb. 27, 2019 | Feb. 26, 2020 |



Attestation of Global Compliance(Shenzhen)Co.,Ltd.

Add: 2/F., Building 2, No.1-4, Chaxi Sanwei Technial Industrial Park, Gushu, Xixiang, Bao'an District, Shenzhen, Guangdong, China

Tel: +86-755 2523 4088 E-mail: agc@agc-cert.com Service Hotline:400 089 2118

#### 4. SUPPORT EQUIPMENT LIST

| Device Type | Manufacturer | Model Name | Serial No. | Data Cable | Power Cable |
|-------------|--------------|------------|------------|------------|-------------|
| --          | --           | --         | --         | --         | --          |

#### 5. SYSTEM DESCRIPTION

**EUT test procedure:**

1. Connect EUT and peripheral devices.
2. Power on the EUT, the EUT begins to work.
3. Make sure the EUT normal working.

#### EMC TEST MODES

| No. | TEST MODES   |
|-----|--|
| 1   | Scanning mode  |
| 2   | Scanning stopped/Receiving at low channel of 136 MHz -174 MHz    |
| 3   | Scanning stopped/Receiving at middle channel of 136 MHz -174 MHz |
| 4   | Scanning stopped/Receiving at high channel of 136 MHz -174 MHz   |
| 5   | Scanning stopped/Receiving at low channel of 400 MHz -480 MHz    |
| 6   | Scanning stopped/Receiving at middle channel of 400 MHz -480 MHz |
| 7   | Scanning stopped/Receiving at high channel of 400 MHz -480 MHz   |

**Note:** Only the result of the worst case was recorded in the report.



Attestation of Global Compliance(Shenzhen)Co.,Ltd.

Add: 2/F., Building 2, No.1-4, Chaxi Sanwei Technial Industrial Park, Gushu,  
Xixiang, Bao'an District, Shenzhen, Guangdong, China

Tel: +86-755 2523 4088 E-mail: agc@agc-cert.com Service Hotline:400 089 2118

## 6. SUMMARY OF TEST RESULTS

| FCC Rules  | Description Of Test  | Result    |
|------------|--|-----------|
| §15.107    | Conduction Emission  | Compliant |
| §15.109    | Radiated Emission  | Compliant |
| §15.111    | Antenna Conducted Power for receivers                                    | Compliant |
| §15.121(b) | Scanning receivers and frequency converters used with scanning receivers | Compliant |



Attestation of Global Compliance(Shenzhen)Co.,Ltd.

Add: 2/F., Building 2, No.1-4, Chaxi Sanwei Technial Industrial Park, Gushu,  
Xixiang, Bao'an District, Shenzhen, Guangdong, China

Tel: +86-755 2523 4088

E-mail: agc@agc-cert.com

Service Hotline:400 089 2118



## 7. FCC RADIATED EMISSION TEST

### 7.1. TEST EQUIPMENT OF RADIATED EMISSION

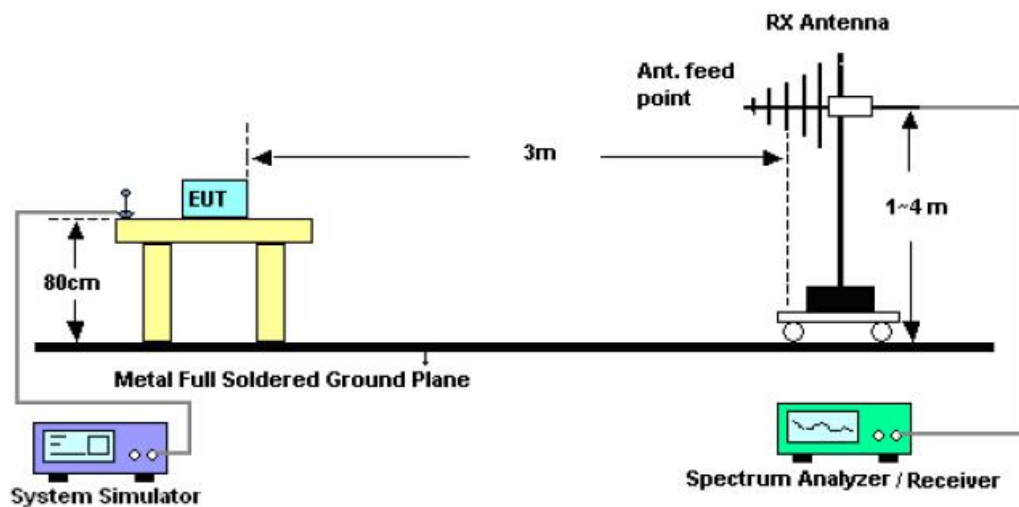
### 7.2. LIMITS OF RADIATED EMISSION TEST

| Frequency (MHz) | Distance (m) | Maximum Field Strength Limit (dBuV/m/ Q.P.) |
|-----------------|--------------|---|
| 30~88           | 3            | 41.0  |
| 88~216          | 3            | 45.0  |
| 216~960         | 3            | 48.0  |
| 960~2000        | 3            | 53.5  |

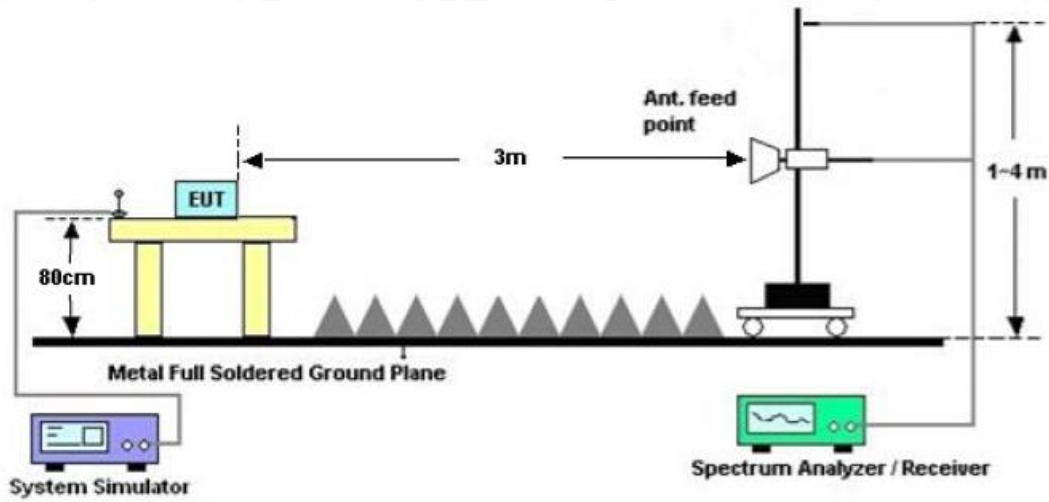
\*\*Note: The lower limit shall apply at the transition frequency. Because the EUT RX frequency range up to 480 MHz, so the upper the frequency range up to 2 GHz.

### 7.3 BLOCK DIAGRAM OF RADIATED EMISSION TEST

RADIATED EMISSION TEST SETUP 30MHz-1000MHz



RADIATED EMISSION TEST SETUP ABOVE 1000MHz



Attestation of Global Compliance(Shenzhen)Co.,Ltd.

Add: 2/F., Building 2, No.1-4, Chaxi Sanwei Technial Industrial Park, Gushu, Xixiang, Bao'an District, Shenzhen, Guangdong, China

Tel: +86-755 2523 4088

E-mail: agc@agc-cert.com

Service Hotline:400 089 2118

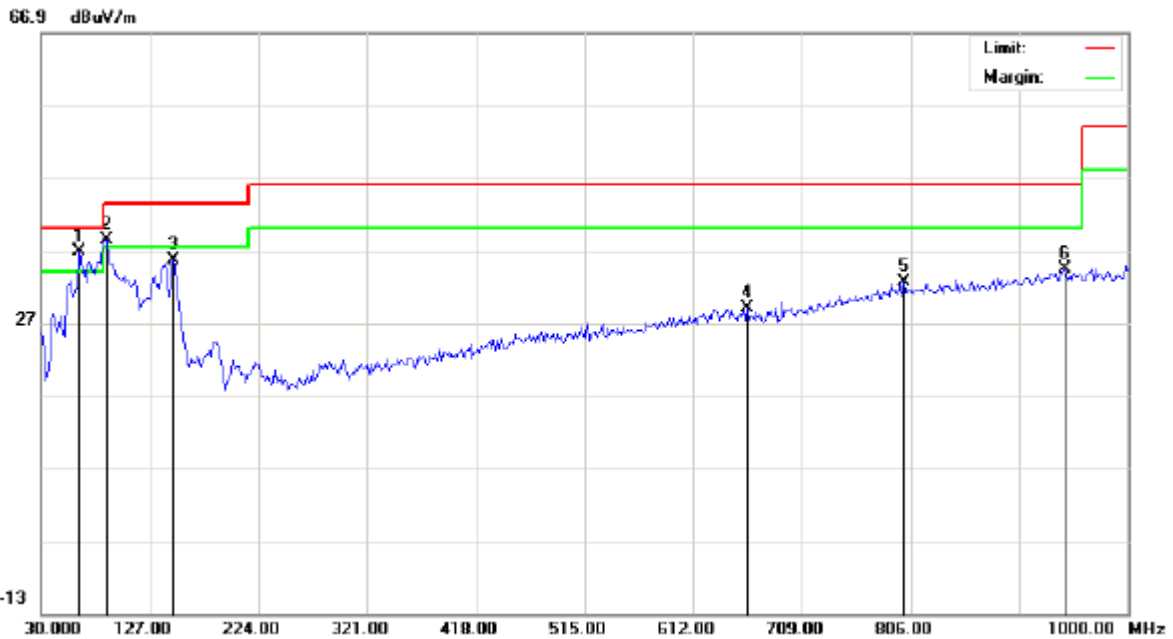
#### 7.4 PROCEDURE OF RADIATED EMISSION TEST

- 1) The equipment was set up as per the test configuration to simulate typical actual usage per the user's manual. When the EUT is a tabletop system, a wooden turntable with a height of 0.8 meters is used which is placed on the ground plane as per ANSI C63.4 (see Test Facility for the dimensions of the ground plane used). When the EUT is floor-standing equipment, it is placed on the ground plane which has a 3-12 mm non-conductive covering to insulate the EUT from the ground plane.
- 2) Support equipment, if needed, was placed as per ANSI C63.4.
- 3) All I/O cables were positioned to simulate typical actual usage as per ANSI C63.4.
- 4) The EUT received power by AC 120V/60Hz.
- 5) The antenna was placed at 3 meter away from the EUT as stated in FCC Part 15. The antenna connected to the Analyzer via a cable and at times a pre-amplifier would be used.
- 6) The Analyzer / Receiver quickly scanned from 30MHz to 1000MHz. The EUT test program was started. Emissions were scanned and measured rotating the EUT to 360 degrees and positioning the antenna 1 to 4 meters above the ground plane, in both the vertical and the horizontal polarization, to maximize the emission reading level.
- 7) The test mode(s) were scanned during the test:
- 8) Recorded at least the six highest emissions. Emission frequency, amplitude, antenna position, polarization and turntable position were recorded into a computer in which correction factors were used to calculate the emission level and compare reading to the applicable limit and Q.P./Peak reading is presented. For emissions below 1GHz, use 120KHz RBW and VBW $\geq$ 3RBW for QP reading.
- 9) For emissions above 1GHz, use 1MHz RBW and 3MHz VBW for peak reading. Then 1MHz RBW and 10Hz VBW for average reading in spectrum analyzer.
- 10) When the radiated emissions limits are expressed in terms of the average value of the emissions, and pulsed operation is employed, the measurement field strength shall be determined by averaging over one complete pulse train, including blanking intervals, as long as the pulse train does not exceed 0.1 seconds. As an alternative (provided the transmitter operates for longer than 0.1 seconds) or in cases where the pulse train exceeds 0.1 seconds, the measured field strength shall be determined from the average absolute voltage during a 0.1 second interval during which the field strength is at its maximum values.
- 11) If the emissions level of the EUT in peak mode was 3 dB lower than the average limit specified, then testing will be stopped and peak values of EUT will be reported, otherwise, the emissions which do not have 3 dB margin will be repeated one by one using the quasi-peak method for below 1GHz.
- 12) For testing above 1GHz, the emissions level of the EUT in peak mode was lower than average limit (that means the emissions level in peak mode also complies with the limit in average mode), then testing will be stopped and peak values of EUT will be reported, otherwise, the emissions will be measured in average mode again and reported.
- 13) In case the emission is lower than 30MHz, loop antenna has to be used for measurement and the recorded data should be QP measured by receiver. High - Low scan is not required in this case.
- 14) The test data of the worst case condition (mode 1) was reported on the following Data page



### 7.5 TEST RESULT OF RADIATED EMISSION TEST

#### Radiated Emission Test –Horizontal -3m Below 1G



| No. | Mk | Freq.    | Reading | Factor | Measurement | Limit  | Over   | Detector | Antenna Height | Table Degree | Comment |
|-----|----|----------|---------|--------|-------------|--------|--------|----------|----------------|--------------|---------|
|     |    | MHz      | dBuV    | dB/m   | dBuV/m      | dBuV/m | dB     |          | cm             | degree       |         |
| 1   | *  | 63.9500  | 18.58   | 18.17  | 36.75       | 40.00  | -3.25  | peak     |                |              |         |
| 2   | !  | 88.2000  | 23.49   | 14.97  | 38.46       | 43.50  | -5.04  | peak     |                |              |         |
| 3   |    | 148.0167 | 16.30   | 19.21  | 35.51       | 43.50  | -7.99  | peak     |                |              |         |
| 4   |    | 660.5000 | 1.36    | 27.68  | 29.04       | 46.00  | -16.96 | peak     |                |              |         |
| 5   |    | 799.5333 | 2.23    | 30.40  | 32.63       | 46.00  | -13.37 | peak     |                |              |         |
| 6   |    | 943.4167 | 2.34    | 32.07  | 34.41       | 46.00  | -11.59 | peak     |                |              |         |

**RESULT: PASS**



Attestation of Global Compliance(Shenzhen)Co.,Ltd.

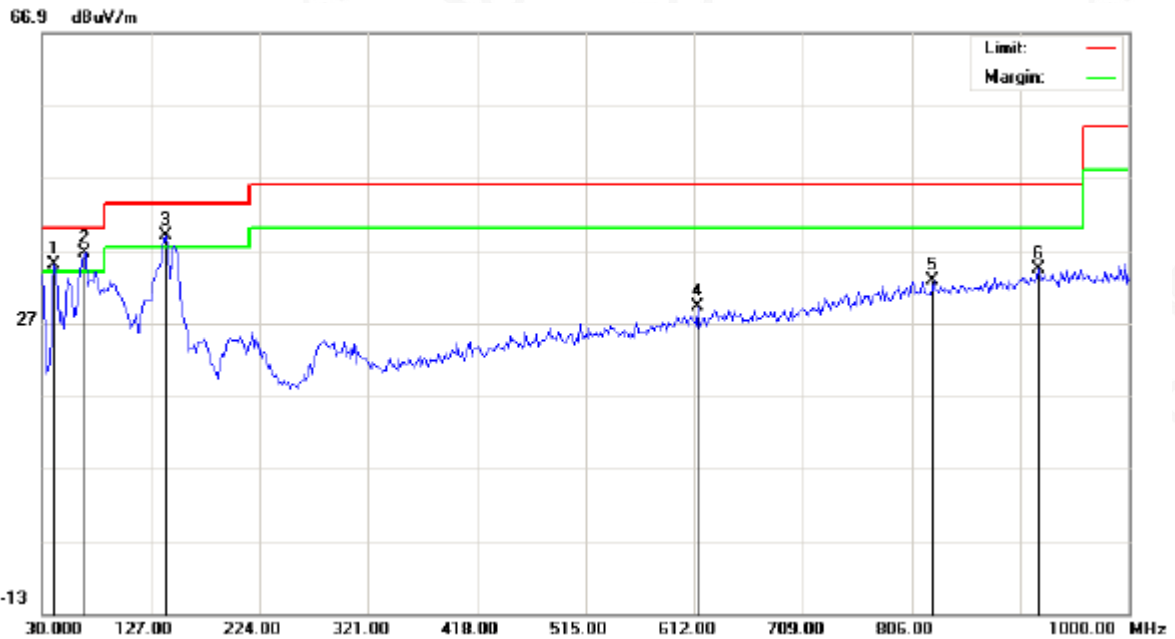
Add: 2/F., Building 2, No.1-4, Chaxi Sanwei Technial Industrial Park, Gushu, Xixiang, Bao'an District, Shenzhen, Guangdong, China

Tel: +86-755 2523 4088

E-mail: agc@agc-cert.com

Service Hotline:400 089 2118

Radiated Emission Test –Vertical -3m Below 1G



| No. | Mk | Freq.    | Reading | Factor | Measurement | Limit  | Over   | Detector | Antenna | Table  | Comment |
|-----|----|----------|---------|--------|-------------|--------|--------|----------|---------|--------|---------|
|     |    | MHz      | dBuV    | dB/m   | dBuV/m      | dBuV/m | dB     |          | Height  | Degree |         |
|     |    |          |         |        |             |        |        |          | cm      | degree |         |
| 1   | !  | 41.3166  | 14.90   | 20.04  | 34.94       | 40.00  | -5.06  | peak     |         |        |         |
| 2   | *  | 68.7999  | 19.22   | 17.32  | 36.54       | 40.00  | -3.46  | peak     |         |        |         |
| 3   | !  | 139.9333 | 19.86   | 19.23  | 39.09       | 43.50  | -4.41  | peak     |         |        |         |
| 4   |    | 615.2332 | 1.98    | 27.13  | 29.11       | 46.00  | -16.89 | peak     |         |        |         |
| 5   |    | 825.3999 | 2.10    | 30.74  | 32.84       | 46.00  | -13.16 | peak     |         |        |         |
| 6   |    | 919.1666 | 2.46    | 31.86  | 34.32       | 46.00  | -11.68 | peak     |         |        |         |

**RESULT: PASS**

- Note:**
1. Factor=Antenna Factor + Cable loss - Amplifier gain, Margin=Measurement-Limit.
  2. The “Factor” value can be calculated automatically by software of measurement system.
  3. Emissions range from 1GHz to 2GHz have 20dB margin. No recording in the test report.
  4. Only the data of the worst case would be record in this test report.



Attestation of Global Compliance(Shenzhen)Co.,Ltd.

Add: 2/F., Building 2, No.1-4, Chaxi Sanwei Technial Industrial Park, Gushu, Xixiang, Bao'an District, Shenzhen, Guangdong, China

Tel: +86-755 2523 4088

E-mail: agc@agc-cert.com

Service Hotline:400 089 2118

## 8. CONDUCTED EMISSION TEST

### 8.1 PROVISIONS APPLICABLE

For an intentional radiator that is designed to be connected to the public utility (AC) power line, the, the radio frequency voltage that is conducted back onto the AC power line on any frequencies within the band 150 KHz to 30 MHz shall not exceed the limits in the following table, as measured using a 50uH/50 ohms line impedance stabilization network (LISN). Compliance with the provisions of this paragraph shall be based on the measurement of the radio frequency voltage between each power line and ground at the power terminal. The lower limit applies at the boundary between the frequencies ranges.

| Frequency of Emission (MHz) | Conducted Limit(dBuV) |            |
|-----------------------------|-----------------------|------------|
|                             | Quasi-Peak            | Average    |
| 0.15 – 0.5                  | 66 to 56 *            | 56 to 46 * |
| 0.5 – 5                     | 56                    | 46         |
| 5 – 30                      | 60                    | 50         |

\* Decreases with the logarithm of the frequency.

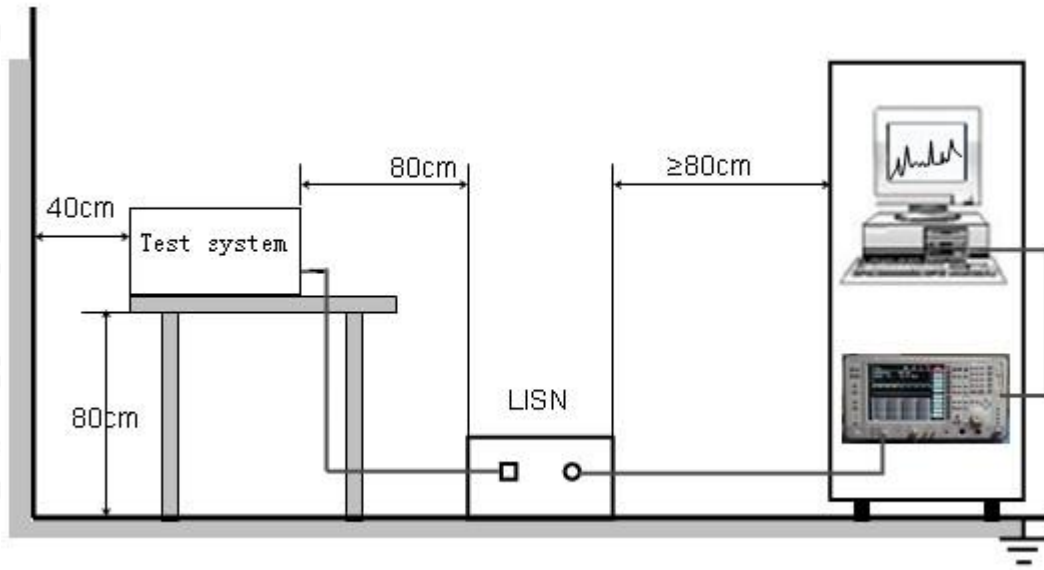
### 8.2 MEASUREMENT PROCEDURE

- (1) The equipment was set up as per the test configuration to simulate typical actual usage per the user's manual. When the EUT is a tabletop system, a wooden table with a height of 0.8 meters is used and is placed on the ground plane as per ANSI C63.4 (see Test Facility for the dimensions of the ground plane used). When the EUT is a floor-standing equipment, it is placed on the ground plane which has a 3-12 mm non-conductive covering to insulate the EUT from the ground plane.
- (2) Support equipment, if needed, was placed as per ANSI C63.4.
- (3) All I/O cables were positioned to simulate typical actual usage as per ANSI C63.4.
- (4) The EUT received AC 120V/60Hz power through a Line Impedance Stabilization Network (LISN) which supplied power source and was grounded to the ground plane.
- (5) All support equipments received AC power from a second LISN, if any.
- (6) The EUT test program was started. Emissions were measured on each current carrying line of the EUT using a spectrum Analyzer / Receiver connected to the LISN powering the EUT. The LISN has two monitoring points: Line 1 (Hot Side) and Line 2 (Neutral Side). Two scans were taken: one with Line 1 connected to Analyzer / Receiver and Line 2 connected to a 50 ohm load; the second scan had Line 1 connected to a 50 ohm load and Line 2 connected to the Analyzer / Receiver.
- (7) Analyzer / Receiver scanned from 150 KHz to 30MHz for emissions in each of the test modes.

During the above scans, the emissions were maximized by cable manipulation.



**8.3 TEST SETUP BLOCK DIAGRAM**



Attestation of Global Compliance(Shenzhen)Co.,Ltd.

Add: 2/F., Building 2, No.1-4, Chaxi Sanwei Technial Industrial Park, Gushu, Xixiang, Bao'an District, Shenzhen, Guangdong, China

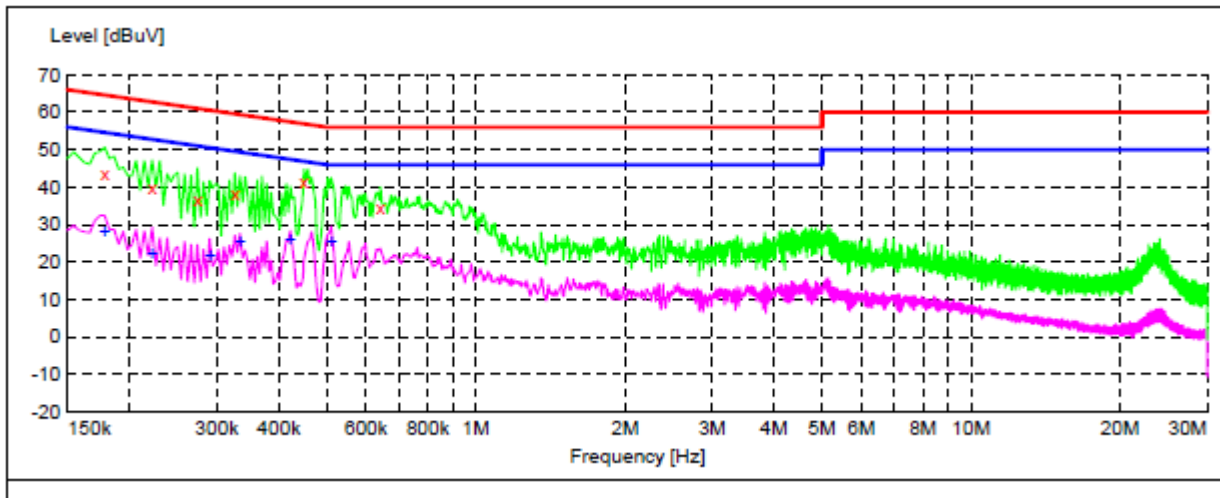
Tel: +86-755 2523 4088

E-mail: agc@agc-cert.com

Service Hotline:400 089 2118

**8.4 TEST RESULT**

**CONDUCTED EMISSION TEST – LINE L**



**MEASUREMENT RESULT :**

| Frequency MHz | Level dBuV | Transd dB | Limit dBuV | Margin dB | Detector | Line | PE  |
|---------------|------------|-----------|------------|-----------|----------|------|-----|
| 0.178000      | 43.40      | 10.0      | 65         | 21.2      | QP       | L1   | FLO |
| 0.222000      | 39.80      | 10.1      | 63         | 22.9      | QP       | L1   | FLO |
| 0.274000      | 36.50      | 10.1      | 61         | 24.5      | QP       | L1   | FLO |
| 0.326000      | 38.50      | 10.1      | 60         | 21.1      | QP       | L1   | FLO |
| 0.450000      | 41.30      | 10.1      | 57         | 15.6      | QP       | L1   | FLO |
| 0.642000      | 34.40      | 10.1      | 56         | 21.6      | QP       | L1   | FLO |

**MEASUREMENT RESULT :**

| Frequency MHz | Level dBuV | Transd dB | Limit dBuV | Margin dB | Detector | Line | PE  |
|---------------|------------|-----------|------------|-----------|----------|------|-----|
| 0.178000      | 28.10      | 10.0      | 55         | 26.5      | AV       | L1   | FLO |
| 0.222000      | 22.00      | 10.1      | 53         | 30.7      | AV       | L1   | FLO |
| 0.290000      | 21.70      | 10.1      | 51         | 28.8      | AV       | L1   | FLO |
| 0.334000      | 25.40      | 10.1      | 49         | 24.0      | AV       | L1   | FLO |
| 0.422000      | 25.90      | 10.1      | 47         | 21.5      | AV       | L1   | FLO |
| 0.510000      | 25.20      | 10.1      | 46         | 20.8      | AV       | L1   | FLO |

**RESULT: PASS**



Attestation of Global Compliance(Shenzhen)Co.,Ltd.

Add: 2/F., Building 2, No.1-4, Chaxi Sanwei Technial Industrial Park, Gushu, Xixiang, Bao'an District, Shenzhen, Guangdong, China

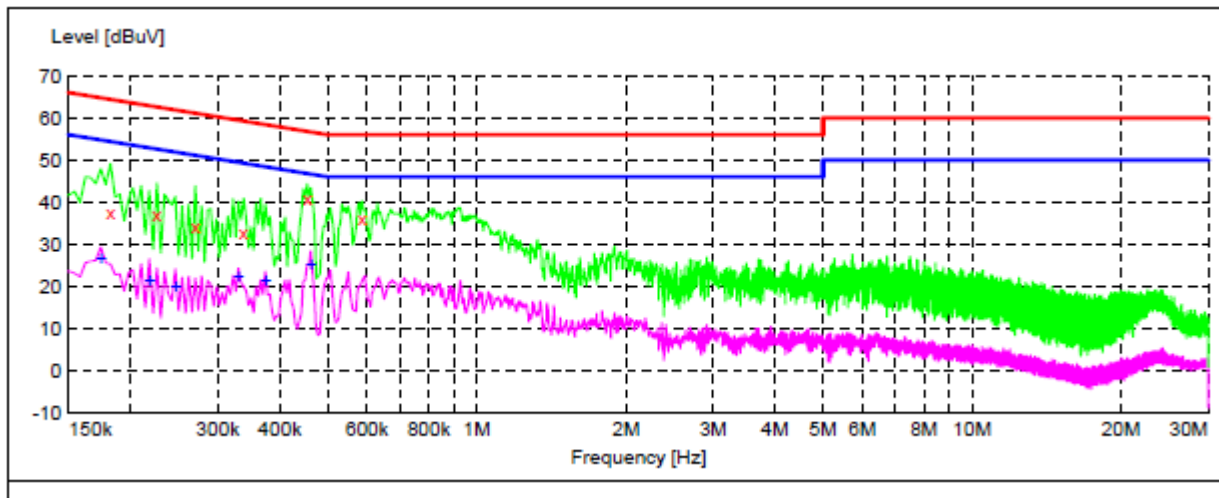
Tel: +86-755 2523 4088

E-mail: agc@agc-cert.com

Service Hotline:400 089 2118



## CONDUCTED EMISSION TEST – LINE N


**MEASUREMENT RESULT:**

| Frequency MHz | Level dBuV | Transd dB | Limit dBuV | Margin dB | Detector | Line | PE  |
|---------------|------------|-----------|------------|-----------|----------|------|-----|
| 0.182000      | 37.70      | 10.0      | 64         | 26.7      | QP       | N    | FLO |
| 0.226000      | 36.90      | 10.1      | 63         | 25.7      | QP       | N    | FLO |
| 0.270000      | 34.00      | 10.1      | 61         | 27.1      | QP       | N    | FLO |
| 0.338000      | 32.70      | 10.1      | 59         | 26.6      | QP       | N    | FLO |
| 0.454000      | 40.70      | 10.1      | 57         | 16.1      | QP       | N    | FLO |
| 0.586000      | 35.90      | 10.1      | 56         | 20.1      | QP       | N    | FLO |

**MEASUREMENT RESULT:**

| Frequency MHz | Level dBuV | Transd dB | Limit dBuV | Margin dB | Detector | Line | PE  |
|---------------|------------|-----------|------------|-----------|----------|------|-----|
| 0.174000      | 26.40      | 10.0      | 55         | 28.4      | AV       | N    | FLO |
| 0.218000      | 21.20      | 10.1      | 53         | 31.7      | AV       | N    | FLO |
| 0.246000      | 19.80      | 10.1      | 52         | 32.1      | AV       | N    | FLO |
| 0.330000      | 22.50      | 10.1      | 50         | 27.0      | AV       | N    | FLO |
| 0.374000      | 21.40      | 10.1      | 48         | 27.0      | AV       | N    | FLO |
| 0.462000      | 25.30      | 10.1      | 47         | 21.4      | AV       | N    | FLO |

**RESULT: PASS**


Attestation of Global Compliance(Shenzhen)Co.,Ltd.

Add: 2/F., Building 2, No.1-4, Chaxi Sanwei Technical Industrial Park, Gushu, Xixiang, Bao'an District, Shenzhen, Guangdong, China

Tel: +86-755 2523 4088

E-mail: agc@agc-cert.com

Service Hotline:400 089 2118

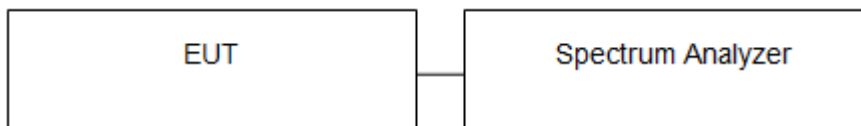
## 9. ANTENNA CONDUCTED POWER FOR RECEIVERS

### LIMIT

The antenna conducted power of the receiver as defined in §15.111 shall not exceed the values given in the following tables

| Frequency Range | 9 KHz to 2GHz     |
|-----------------|-------------------|
| Limit           | 2.0 nW (-57 dBm ) |

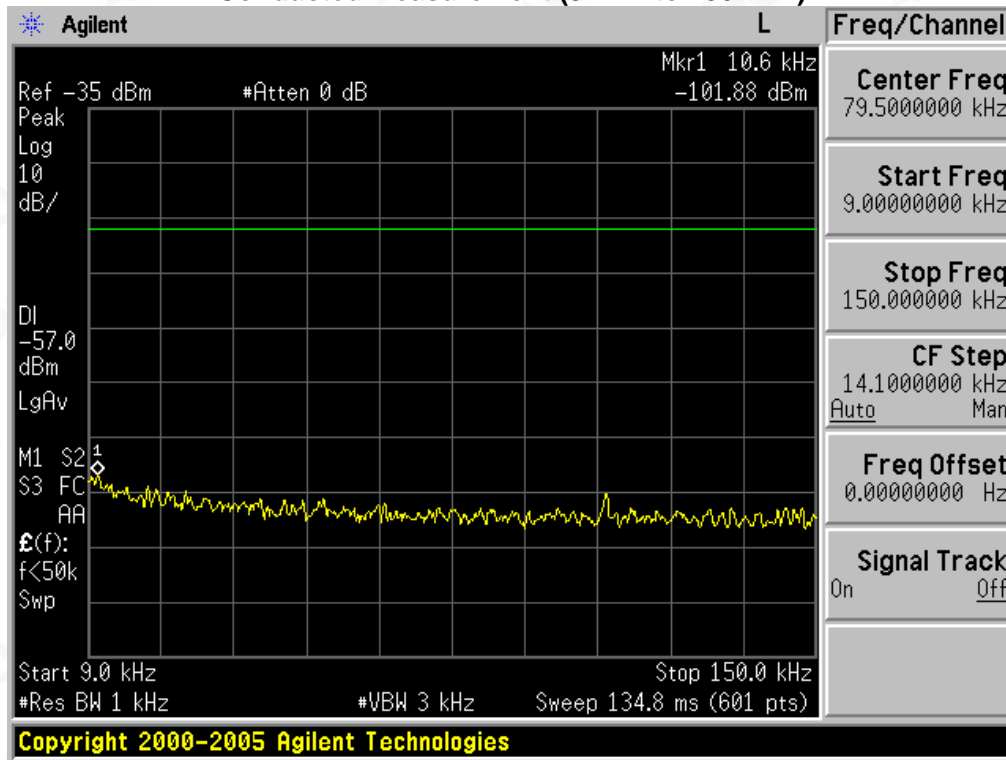
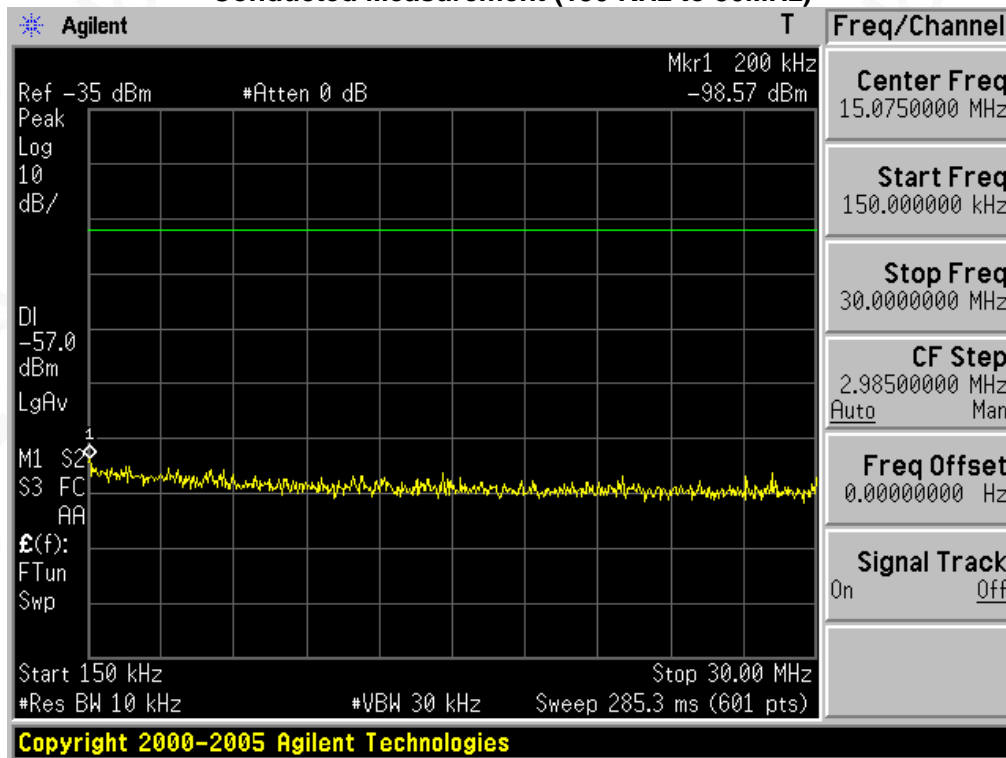
### TEST CONFIGURATION



### TEST PROCEDURE

1. The receiver antenna terminal connected to a spectrum analyzer.
2. The test data of the worst case condition (mode 1) was reported on the following Data page.



**TEST RESULTS**
**Conducted Measurement (9 KHz to 150 KHz)**

**Conducted Measurement (150 KHz to 30MHz)**


Attestation of Global Compliance(Shenzhen)Co.,Ltd.

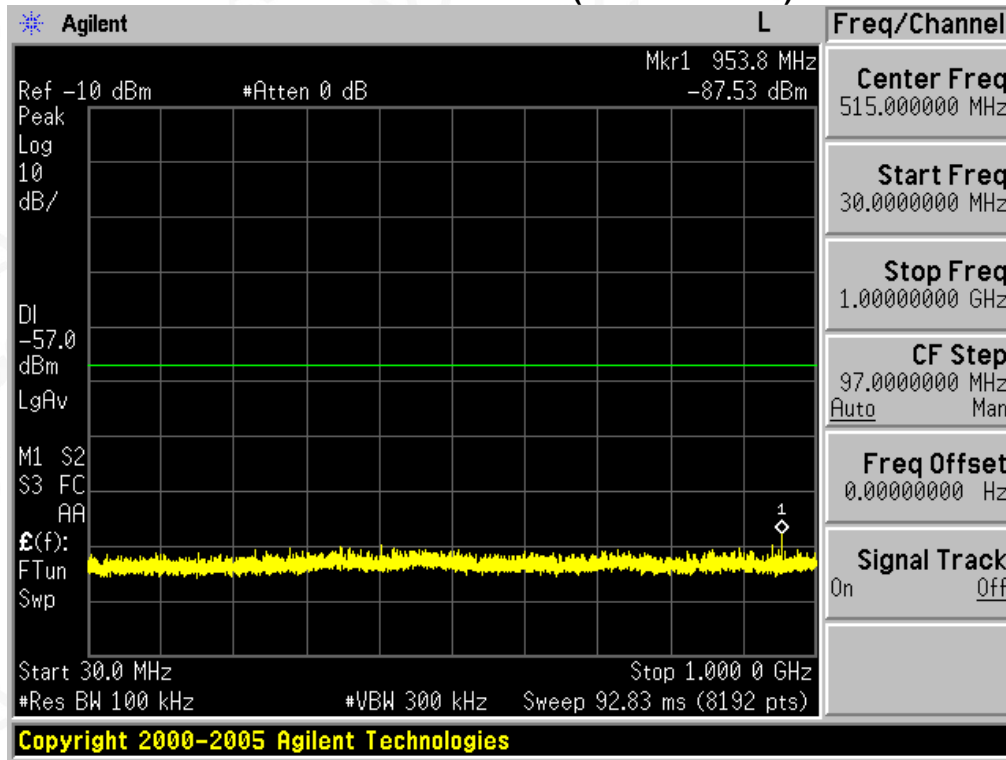
Add: 2/F., Building 2, No.1-4, Chaxi Sanwei Technial Industrial Park, Gushu, Xixiang, Bao'an District, Shenzhen, Guangdong, China

Tel: +86-755 2523 4088

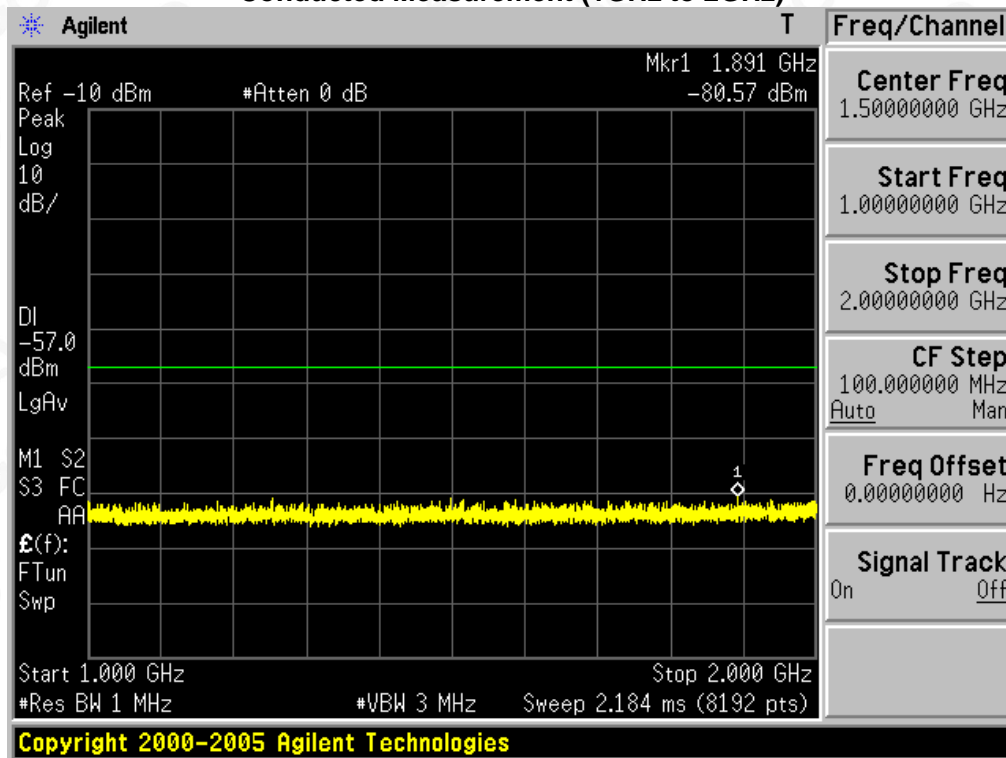
E-mail: agc@agc-cert.com

Service Hotline:400 089 2118

**Conducted Measurement (30MHz to 1GHz)**



**Conducted Measurement (1GHz to 2GHz)**



**PASS**



Attestation of Global Compliance(Shenzhen)Co.,Ltd.

Add: 2/F., Building 2, No.1-4, Chaxi Sanwei Technial Industrial Park, Gushu, Xixiang, Bao'an District, Shenzhen, Guangdong, China

Tel: +86-755 2523 4088

E-mail: agc@agc-cert.com

Service Hotline:400 089 2118

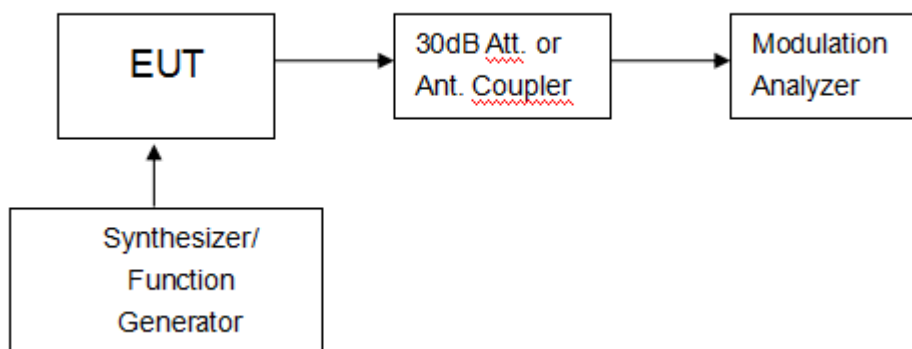
## 10. SANNING RECEIVERS AND FREQUENCY CONVERTERS USED WITH SANNING

### RECEIVERS.

#### LIMIT

Except as provided in paragraph (c) of this section, scanning receivers shall reject any signals from the Cellular Radiotelephone Service frequency bands that are 38 dB or lower based upon a 12 dB SINAD measurement, which is considered the threshold where a signal can be clearly discerned from any interference that may be present.

#### TEST CONFIGURATION



#### TEST PROCEDURE

Please review the FCC Part 15.121 b section requirements to meet the testing process

#### TEST RESULTS

##### VHF:

| Frequency Range(MHz) | Channel | Measurement Result (dB) | Limit(dB) | Result |
|----------------------|---------|-------------------------|-----------|--------|
| 136-174              | Bottom  | 46                      | >38       | Pass   |
| 136-174              | Middle  | 49                      | >38       | Pass   |
| 136-174              | Top     | 47                      | >38       | Pass   |



## UHF:

| Frequency Range(MHz) | Channel | Measurement Result (dB) | Limit(dB) | Result |
|----------------------|---------|-------------------------|-----------|--------|
| 400-480              | Bottom  | 48                      | >38       | Pass   |
| 400-480              | Middle  | 50                      | >38       | Pass   |
| 400-480              | Top     | 47                      | >38       | Pass   |

Note:1.This device meets the requirements of FCC PART 15.121.b

2.The test report only shows the worst test results



Attestation of Global Compliance(Shenzhen)Co.,Ltd.

Add: 2/F., Building 2, No.1-4, Chaxi Sanwei Technial Industrial Park, Gushu,  
Xixiang, Bao'an District, Shenzhen, Guangdong, China

Tel: +86-755 2523 4088

E-mail: agc@agc-cert.com

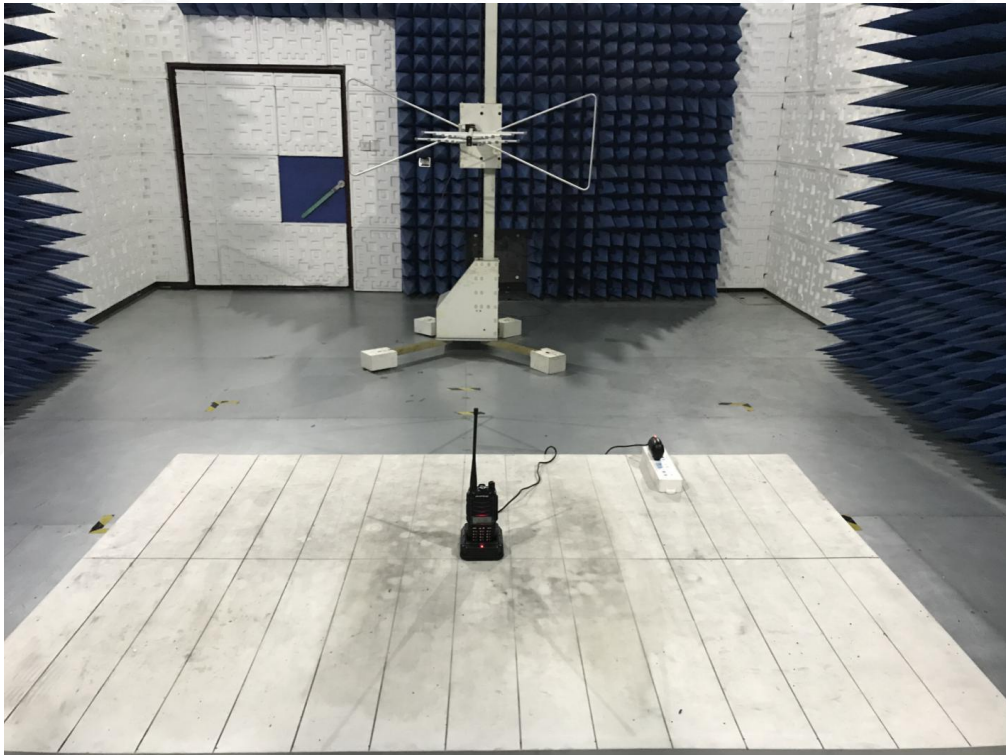
Service Hotline:400 089 2118

### APPENDIX 1 PHOTOGRAPHS OF TEST SETUP

#### CONDUCTED EMISSION TEST SETUP



#### RADIATED EMISSION TEST SETUP-BELOW 1GHZ



Attestation of Global Compliance(Shenzhen)Co.,Ltd.

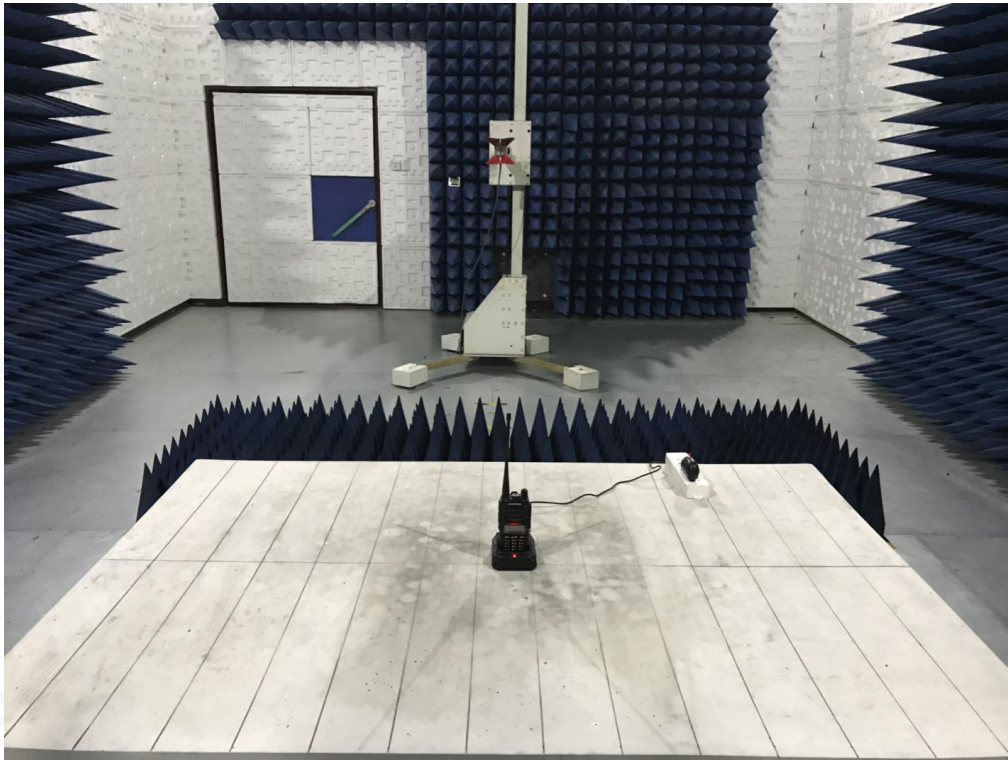
Add: 2/F., Building 2, No.1-4, Chaxi Sanwei Technial Industrial Park, Gushu,  
Xixiang, Bao'an District, Shenzhen, Guangdong, China

Tel: +86-755 2523 4088

E-mail: agc@agc-cert.com

Service Hotline:400 089 2118

**RADIATED EMISSION TEST SETUP-ABOVE 1GHZ**



Attestation of Global Compliance(Shenzhen)Co.,Ltd.

Add: 2/F., Building 2, No.1-4, Chaxi Sanwei Technial Industrial Park, Gushu,  
Xixiang, Bao'an District, Shenzhen, Guangdong, China

Tel: +86-755 2523 4088

E-mail: agc@agc-cert.com

Service Hotline:400 089 2118



**APPENDIX 2 PHOTOGRAPHS OF EUT**

TOTAL VIEW OF EUT



TOP VIEW OF EUT



Attestation of Global Compliance(Shenzhen)Co.,Ltd.

Add: 2/F., Building 2, No.1-4, Chaxi Sanwei Technial Industrial Park, Gushu, Xixiang, Bao'an District, Shenzhen, Guangdong, China

Tel: +86-755 2523 4088

E-mail: agc@agc-cert.com

Service Hotline:400 089 2118

BOTTOM VIEW OF EUT



FRONT VIEW OF EUT



Attestation of Global Compliance(Shenzhen)Co.,Ltd.

Add: 2/F., Building 2, No.1-4, Chaxi Sanwei Technial Industrial Park, Gushu, Xixiang, Bao'an District, Shenzhen, Guangdong, China

Tel: +86-755 2523 4088

E-mail: agc@agc-cert.com

Service Hotline:400 089 2118

BACK VIEW OF EUT



LEFT VIEW OF EUT



Attestation of Global Compliance(Shenzhen)Co.,Ltd.

Add: 2/F., Building 2, No.1-4, Chaxi Sanwei Technial Industrial Park, Gushu, Xixiang, Bao'an District, Shenzhen, Guangdong, China

Tel: +86-755 2523 4088

E-mail: agc@agc-cert.com

Service Hotline:400 089 2118

RIGHT VIEW OF EUT



OPEN VIEW-1 OF EUT



Attestation of Global Compliance(Shenzhen)Co.,Ltd.

Add: 2/F., Building 2, No.1-4, Chaxi Sanwei Technial Industrial Park, Gushu, Xixiang, Bao'an District, Shenzhen, Guangdong, China

Tel: +86-755 2523 4088

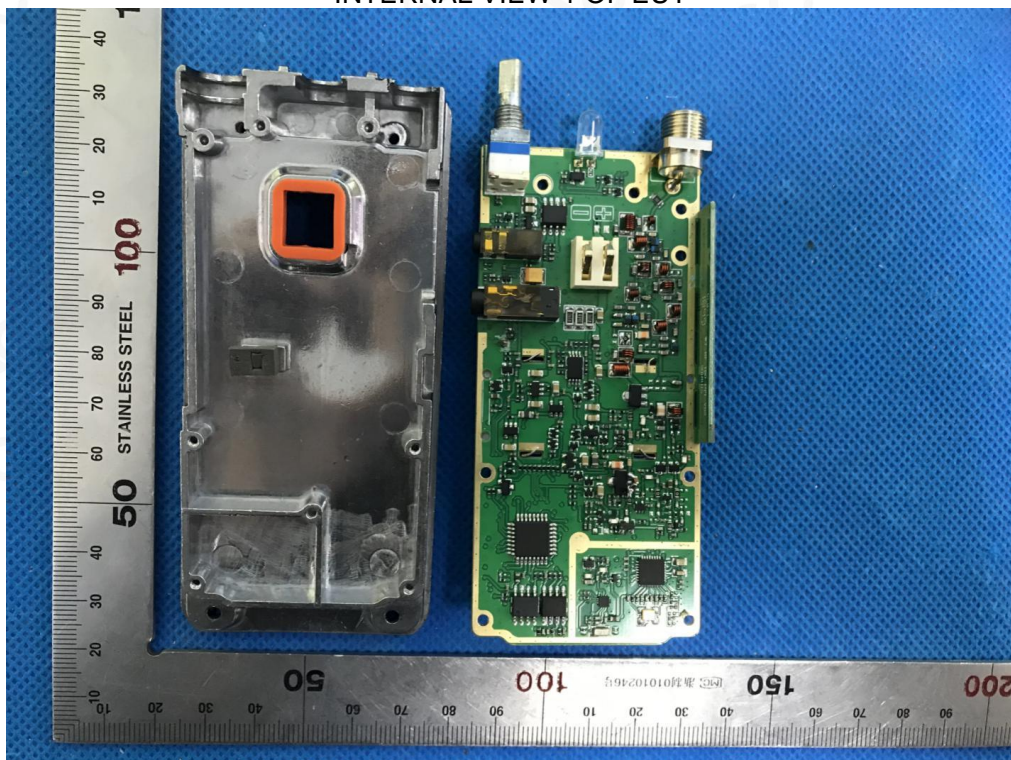
E-mail: agc@agc-cert.com

Service Hotline:400 089 2118

OPEN VIEW-2 OF EUT



INTERNAL VIEW-1 OF EUT



Attestation of Global Compliance(Shenzhen)Co.,Ltd.

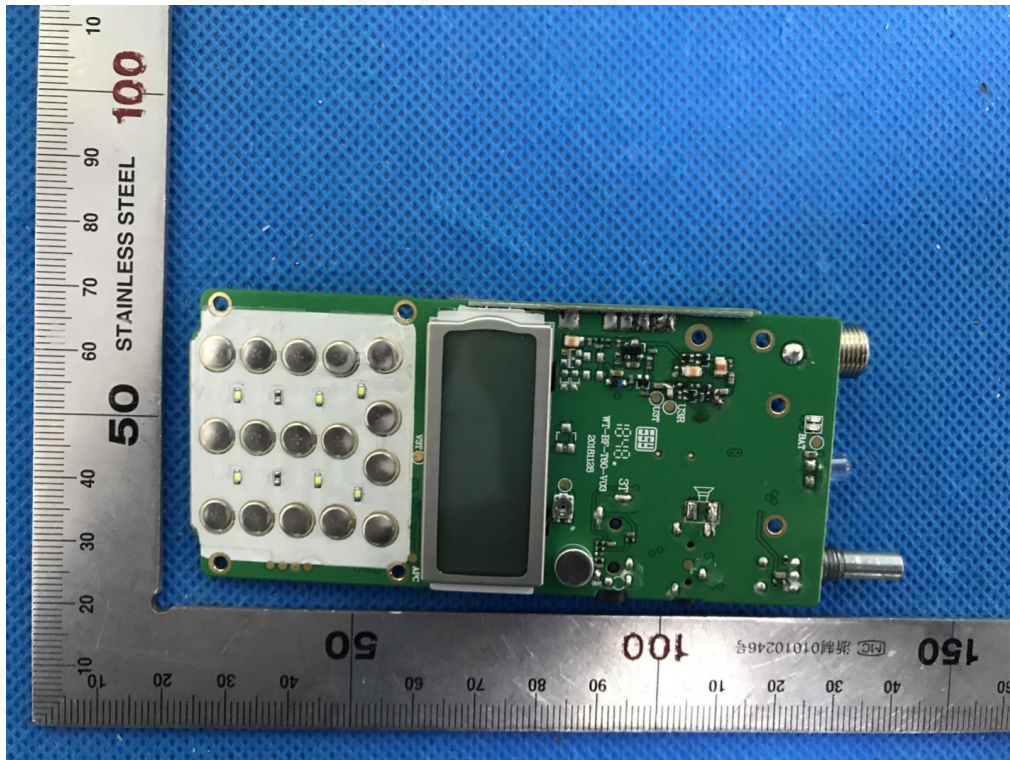
Add: 2/F., Building 2, No.1-4, Chaxi Sanwei Technial Industrial Park, Gushu,  
Xixiang, Bao'an District, Shenzhen, Guangdong, China

Tel: +86-755 2523 4088

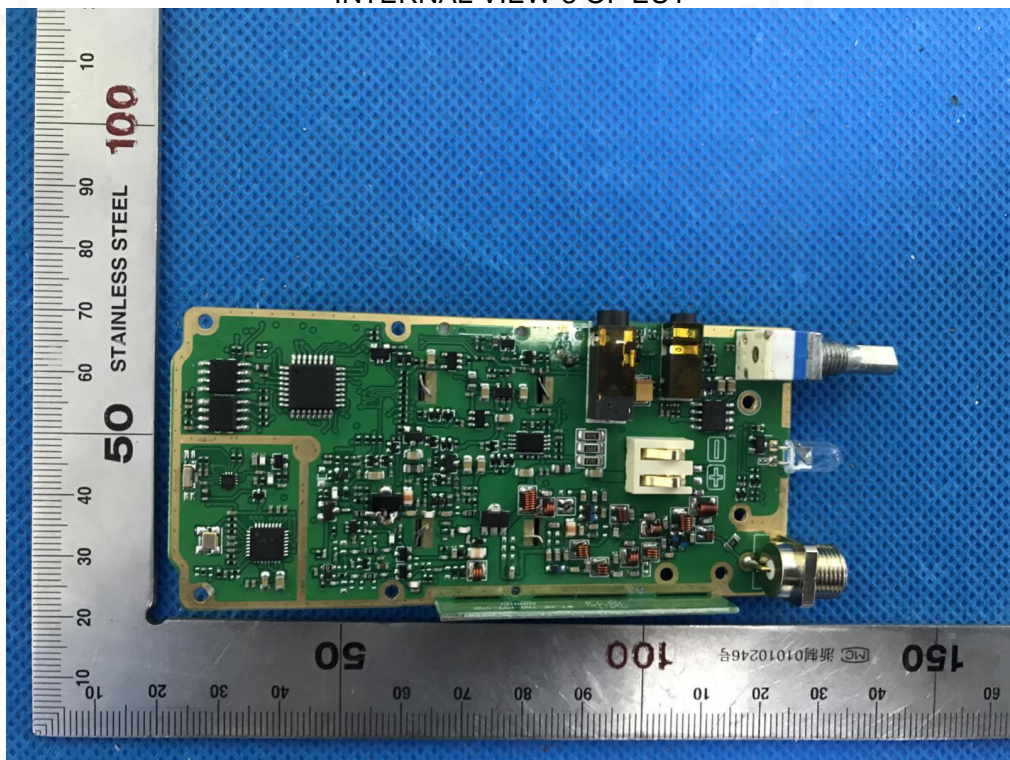
E-mail: agc@agc-cert.com

Service Hotline:400 089 2118

INTERNAL VIEW-2 OF EUT



INTERNAL VIEW-3 OF EUT



Attestation of Global Compliance(Shenzhen)Co.,Ltd.

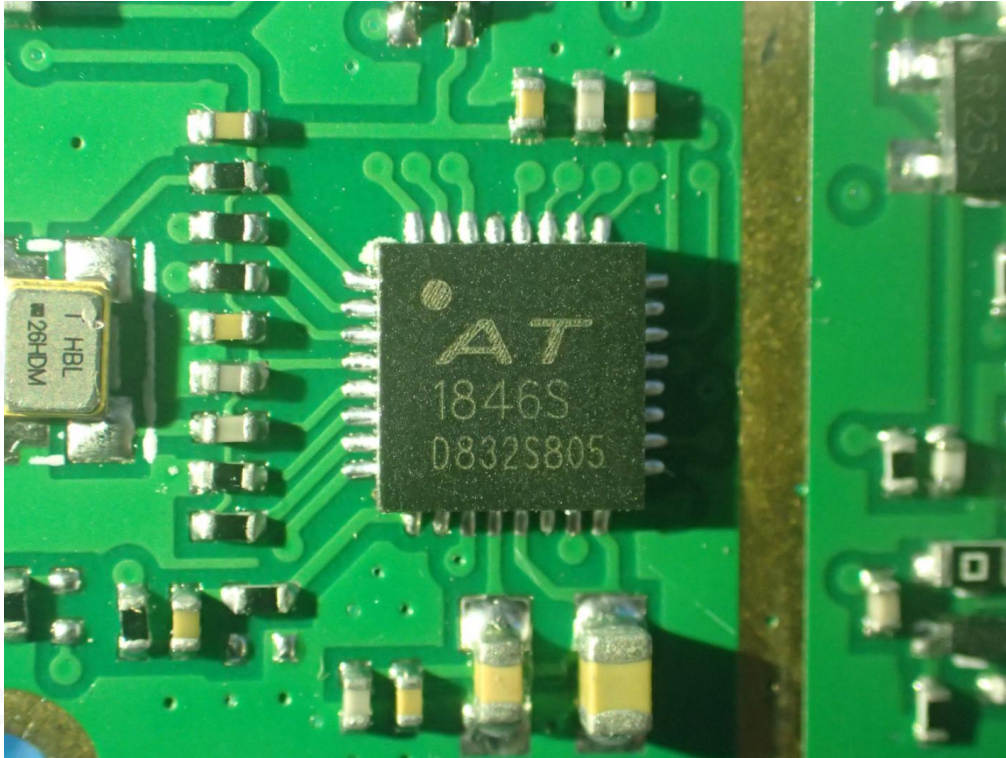
Add: 2/F., Building 2, No.1-4, Chaxi Sanwei Technial Industrial Park, Gushu, Xixiang, Bao'an District, Shenzhen, Guangdong, China

Tel: +86-755 2523 4088

E-mail: agc@agc-cert.com

Service Hotline:400 089 2118

INTERNAL VIEW-4 OF EUT



----END OF REPORT----