

BAOFENG

Digital Radio

Model: NA-T20D

Voltage : DC3. 7V

FCC ID:2AJGM-T20D



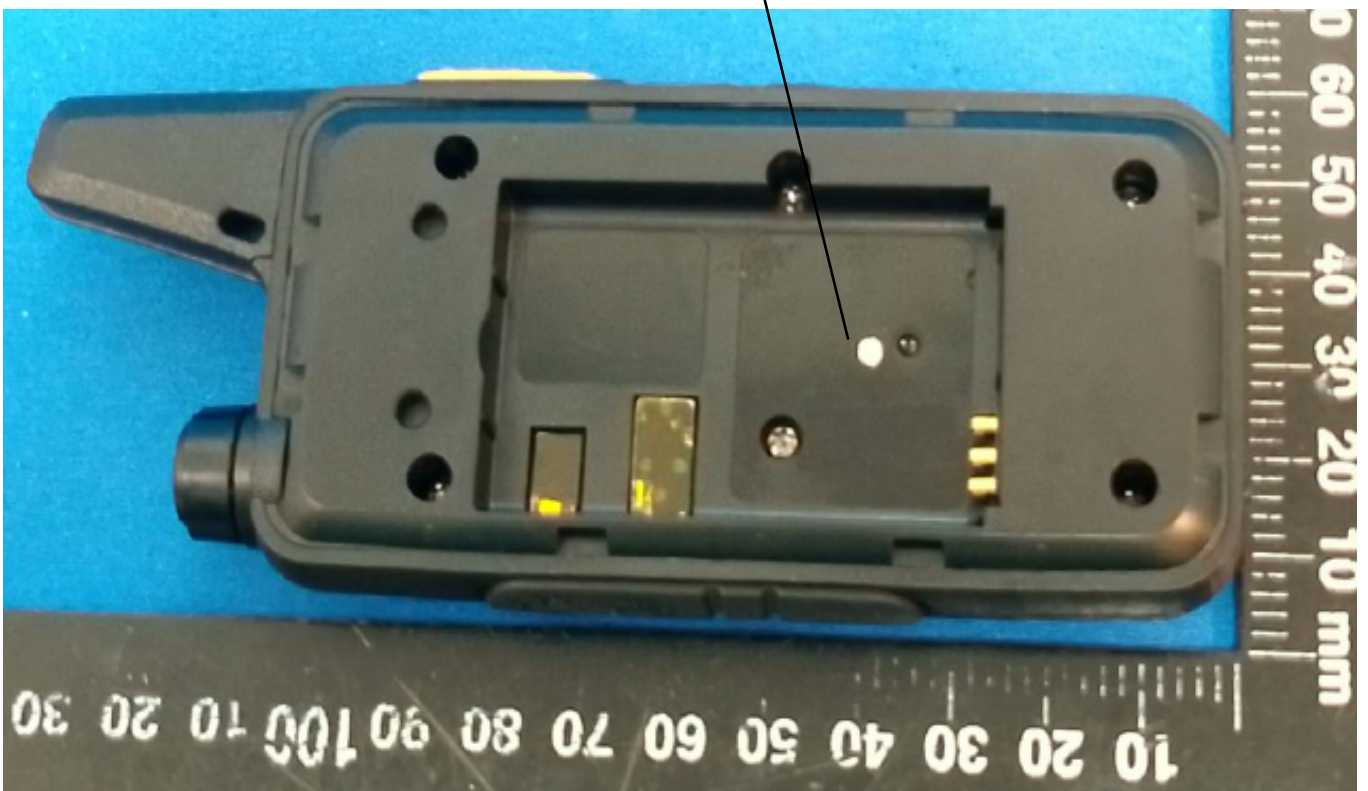
CAUTION

Device must be restricted to occupational use to satisfy FCC RF exposure compliance. See relevant product documentation for details.



S / N : T 2 0 D 2 4 0 0 0 1

PO FUNG ELECTRONIC (HK) INTERNATIONAL GROUP COMPANY LIMITED




BAOFENG
Two-Way Radio

Model: AD-T20D
Voltage: DC3.7V
FCC ID: 2AJGM-T20D

FC

Device must be restricted to occupational use to satisfy FCC RF exposure compliance. See relevant product documentation for details.

CAUTION



S/ N: T20D240001

PO FUNG ELECTRONIC (HK) INTERNATIONAL GROUP COMPANY LIMITED


BAOFENG
Two-Way Radio

Model: AT-T20D
Voltage: DC3.7V
FCC ID: 2AJGM-T20D

FC

Device must be restricted to occupational use to satisfy FCC RF exposure compliance. See relevant product documentation for details.

CAUTION



S/ N: T20D240001

PO FUNG ELECTRONIC (HK) INTERNATIONAL GROUP COMPANY LIMITED

BAOFENG
Two-Way Radio

Model: BD-T20A
Voltage: DC3.7V
FCC ID: 2AJGM-T20D

FC

Device must be restricted to occupational use to satisfy FCC RF exposure compliance. See relevant product documentation for details.

CAUTION



S/ N: T20A240001

PO FUNG ELECTRONIC (HK) INTERNATIONAL GROUP COMPANY LIMITED


BAOFENG
Two-Way Radio

Model: BD-T20B
Voltage: DC3.7V
FCC ID: 2AJGM-T20D

FC

Device must be restricted to occupational use to satisfy FCC RF exposure compliance. See relevant product documentation for details.

CAUTION



S/ N: T20B240001

PO FUNG ELECTRONIC (HK) INTERNATIONAL GROUP COMPANY LIMITED


BAOFENG
Two-Way Radio

Model: BD-T20C
Voltage: DC3.7V
FCC ID: 2AJGM-T20D

FC

Device must be restricted to occupational use to satisfy FCC RF exposure compliance. See relevant product documentation for details.

CAUTION



S/ N: T20C240001

PO FUNG ELECTRONIC (HK) INTERNATIONAL GROUP COMPANY LIMITED