

#01_Bluetooth_1Mbps_Position 6_0mm_Ch78

Communication System: Bluetooth ; Frequency: 2480 MHz; Duty Cycle: 1:1.2

Medium: HSL_2450_160908 Medium parameters used: $f = 2480$ MHz; $\sigma = 1.797$ S/m; $\epsilon_r = 40.65$; $\rho = 1000$ kg/m³

Ambient Temperature : 23.6 °C ; Liquid Temperature : 22.6 °C

DASY5 Configuration:

- Probe: EX3DV4 - SN3697; ConvF(6.75, 6.75, 6.75); Calibrated: 2015/9/28;
- Sensor-Surface: 1.4mm (Mechanical Surface Detection)
- Electronics: DAE4 Sn1388; Calibrated: 2015/9/25
- Phantom: SAM_Right; Type: QD000P40CD; Serial: TP:1383
- Measurement SW: DASY52, Version 52.8 (8); SEMCAD X Version 14.6.10 (7331)

Area Scan (41x51x1): Interpolated grid: dx=1.200 mm, dy=1.200 mm

Maximum value of SAR (interpolated) = 0.611 W/kg

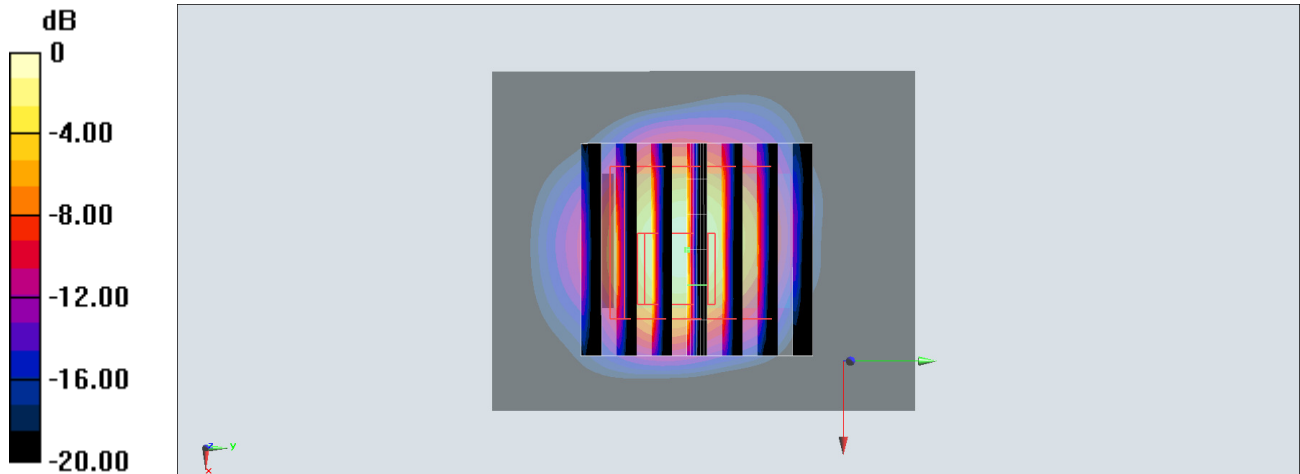
Zoom Scan (7x7x7)/Cube 0: Measurement grid: dx=5mm, dy=5mm, dz=5mm

Reference Value = 12.68 V/m; Power Drift = 0.19 dB

Peak SAR (extrapolated) = 1.21 W/kg

SAR(1 g) = 0.251 W/kg; SAR(10 g) = 0.087 W/kg

Maximum value of SAR (measured) = 0.673 W/kg



0 dB = 0.673 W/kg = -1.72 dBW/kg