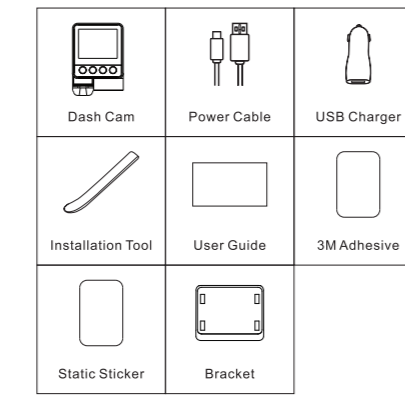


Z50

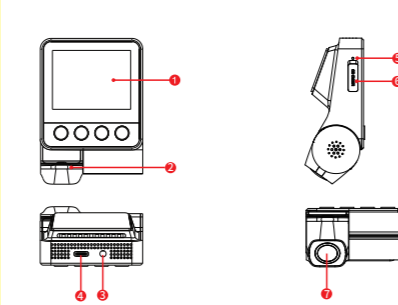
1 SPECIFICATIONS

- Product Model: Z50
- Size: 82*62*31.15mm
- Input: 5V=2A
- Storage: TF card storage, maximum support 128GB, cycle recording
- Wi-Fi: Wi-Fi2, 4GHz
- G-Sensor: Built-in 3 Gyro sensor, motion locking, adjustable sensitivity via App

2 PACKAGE CONTENTS



3 PRODUCT OVERVIEW



1 Dash Cam Screen	8 MIC
2 Working Indicator	6 TF Card Slot
3 AV Interface	7 Lens
4 Type-C Power Interface	

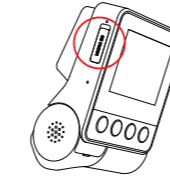
Button Description	Function description
1 Set	Click the button to enter the settings selection.
2 Sound Recording	Click the button to turn on/off recording.
3 Album	Click the button to open the album.
4 Lock	Click the button to turn on/off the screen. Reset: Long press 6s to reset.

4 LED INDICATOR INSTRUCTION

Product status	Indicator status
Working fine	Blue light is always on
Incident video/emergency video/photo video	Purple light flashes quickly
Abnormal status/upgrading	Red light flashes quickly
USB data transmission mode	Green light is always on
Test pattern	White light is always on
Parking monitoring	Red light is always on

5 INSTALLATION

- Clean an area on the windshield where you wish the Dash Cam to be installed, this assists in adhesion.
- Open the protection cover of TF card slot, insert the memory card into the slot, pay attention to the front and back sides, and close the protection cover after completion.



- Remove the protective film from the back of the bracket, attach the adhesive side of the mount on the windshield where it has an unobstructed view of the road but does not interfere with the driver's view. As shown below.



- Use the installation tool to lift the edges of the windshield/molding and tuck in the power cable. Connect the Dash Cam to the car charger (plugged into cigarette lighter socket) and power cable.

- After the car starts, the Dash Cam powers up and starts recording.

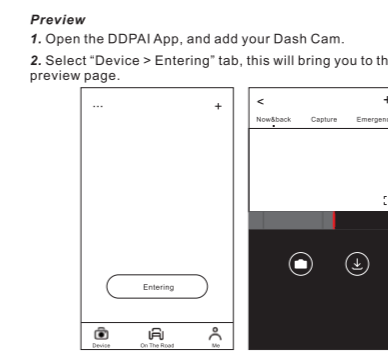
6 APP INSTRUCTION

- Install DDPAI App
Scan the QR code to download the "DDPAI" App.



Pair Smart Phone to Dash Cam

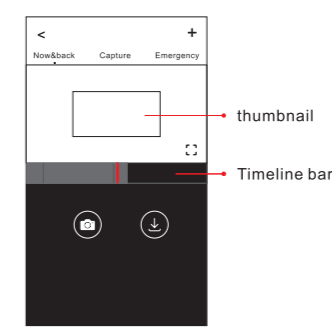
- Keep the Dash Cam and mobile phone within 2.5meters.
- Launch DDPAI App, tap on "Device" > Connect new devices".
- Choose your DDPAI Dash Cam from the network list (For Android system, App will start to search Dash Cam network automatically. For iOS phone turn on WLAN from "Settings" > "WLAN"). The Dash Cam's default SSID (or Wi-Fi name) is DDPAI_Z50_XXXX.
- Enter the password (the default password is 1234567890).
- Enter DDPAI App, wait a few seconds until the preview screen show.



- Rotate your smart phone or press expand icon, turn the preview screen to landscape mode.

Playback

- Tap and left/right drag timeline bar at the screen bottom to create the starting point of the recording you wish to preview, then tap on thumbnail when you have made your selection, or wait for 5 sec for buffering, to watch the history recording.



Download Video Files

- Tap and left/right drag timeline bar at the screen bottom to create the starting point of the recording you wish to download, then tap on thumbnail when you have made your selection, or wait for 5 sec for buffering, to enter the download start screen.
- Tap on from preview screen to enter the download interface.

CONTACT

- www.ddpai.com
- feedback@ddpai.com
- DDPAI Technology Co., Ltd
- Floor 12, Yihua finance building, Software Park, Yuehai Sub district, Nanshan district, Shenzhen

For more information and FAQs, Please scan the QR code:



