

TEST REPORT

Product Name : Dash Cam
Brand Mark : DDPAI
Model No. : mini Pro
FCC ID : 2AJFX-MINIPRO
Report Number : BLA-EMC-202302-A4402
Date of Sample Receipt : 2023/2/23
Date of Test : 2023/2/24 to 2023/3/9
Date of Issue : 2023/3/10
Test Standard : 47 CFR Part 15, Subpart C 15.247
Test Result : Pass

Prepared for:

DDPAI Technology Co., Ltd

Floor 12, Yihua Finance Building, Nanshan Software Industry park, Xuefu Rd, Nanshan District, Shenzhen

Prepared by:

BlueAsia of Technical Services(Shenzhen) Co.,Ltd.

Building C, No. 107, Shihuan Road, Shiyuan Sub-District, Baoan District, Shenzhen, Guangdong Province, China

TEL: +86-755-23059481

Compiled by: *charlie*

Review by: *Sueels*

Approved by: *Blue Zheng*

Date: 2023/3/10



REPORT REVISE RECORD

Version No.	Date	Description
00	2023/3/10	Original

BlueAsia

TABLE OF CONTENTS

1 TEST SUMMARY	5
2 GENERAL INFORMATION	6
3 GENERAL DESCRIPTION OF E.U.T.	6
4 TEST ENVIRONMENT	7
5 TEST MODE	7
6 MEASUREMENT UNCERTAINTY	7
7 DESCRIPTION OF SUPPORT UNIT	8
8 LABORATORY LOCATION	8
9 TEST INSTRUMENTS LIST	9
10 ANTENNA REQUIREMENT	11
10.1 CONCLUSION	11
11 RADIATED SPURIOUS EMISSIONS	12
11.1 LIMITS	12
11.2 BLOCK DIAGRAM OF TEST SETUP	13
11.3 PROCEDURE	13
11.4 TEST DATA	15
12 RADIATED EMISSIONS WHICH FALL IN THE RESTRICTED BANDS	23
12.1 LIMITS	23
12.2 BLOCK DIAGRAM OF TEST SETUP	24
12.3 PROCEDURE	24
12.4 TEST DATA	26
13 CONDUCTED SPURIOUS EMISSIONS	38
13.1 LIMITS	38
13.2 BLOCK DIAGRAM OF TEST SETUP	38
13.3 TEST DATA	39
14 CONDUCTED BAND EDGES MEASUREMENT	40
14.1 LIMITS	40
14.2 BLOCK DIAGRAM OF TEST SETUP	40
14.3 TEST DATA	41

15 MINIMUM 6DB BANDWIDTH	42
15.1 LIMITS	42
15.2 BLOCK DIAGRAM OF TEST SETUP	42
15.3 TEST DATA	42
16 POWER SPECTRUM DENSITY	43
16.1 LIMITS	43
16.2 BLOCK DIAGRAM OF TEST SETUP	43
16.3 TEST DATA	43
17 CONDUCTED PEAK OUTPUT POWER	44
17.1 LIMITS	44
17.2 BLOCK DIAGRAM OF TEST SETUP	44
17.3 TEST DATA	45
18 CONDUCTED EMISSIONS AT AC POWER LINE (150KHZ-30MHZ)	46
18.1 LIMITS	46
18.2 BLOCK DIAGRAM OF TEST SETUP	46
18.3 PROCEDURE	46
18.4 TEST DATA	48
19 APPENDIX	50
19.1 MAXIMUM CONDUCTED OUTPUT POWER	50
19.2 -6dB BANDWIDTH	55
19.3 OCCUPIED CHANNEL BANDWIDTH	60
19.4 MAXIMUM POWER SPECTRAL DENSITY LEVEL	65
19.5 BAND EDGE	70
19.6 CONDUCTED RF SPURIOUS EMISSION	77
APPENDIX A: PHOTOGRAPHS OF TEST SETUP	87
APPENDIX B: PHOTOGRAPHS OF EUT	89

1 TEST SUMMARY

Test item	Test Requirement	Test Method	Class/Severity	Result
Antenna Requirement	47 CFR Part 15, Subpart C 15.247	N/A	47 CFR Part 15, Subpart C 15.203 & 15.247(c)	Pass
Radiated Spurious Emissions	47 CFR Part 15, Subpart C 15.247	ANSI C63.10 (2013) Section 6.4,6.5,6.6	47 CFR Part 15, Subpart C 15.209 & 15.247(d)	Pass
Radiated Emissions which fall in the restricted bands	47 CFR Part 15, Subpart C 15.247	ANSI C63.10 (2013) Section 6.10.5	47 CFR Part 15, Subpart C 15.209 & 15.247(d)	Pass
Conducted Spurious Emissions	47 CFR Part 15, Subpart C 15.247	ANSI C63.10 (2013) Section 7.8.6 & Section 11.11	47 CFR Part 15, Subpart C 15.247(d)	Pass
Conducted Band Edges Measurement	47 CFR Part 15, Subpart C 15.247	ANSI C63.10 (2013) Section 7.8.8 & Section 11.13.3.2	47 CFR Part 15, Subpart C 15.247(d)	Pass
Minimum 6dB Bandwidth	47 CFR Part 15, Subpart C 15.247	ANSI C63.10 (2013) Section 11.8.1	47 CFR Part 15, Subpart C 15.247a(2)	Pass
Power Spectrum Density	47 CFR Part 15, Subpart C 15.247	ANSI C63.10 (2013) Section 11.10.2	47 CFR Part 15, Subpart C 15.247(e)	Pass
Conducted Peak Output Power	47 CFR Part 15, Subpart C 15.247	ANSI C63.10 (2013) Section 7.8.5 & Section 11.9.1	47 CFR Part 15, Subpart C 15.247(b)(1) & 15.247(b)(3)	Pass
Conducted Emissions at AC Power Line (150kHz-30MHz)	47 CFR Part 15, Subpart C 15.247	ANSI C63.10 (2013) Section 6.2	47 CFR Part 15, Subpart C 15.207	Pass

2 GENERAL INFORMATION

Applicant	DDPAI Technology Co., Ltd
Address	Floor 12, Yihua Finance Building,Nanshan Software Industry park, Xuefu Rd,Nanshan District, Shenzhen
Manufacturer	DDPAI Technology Co., Ltd
Address	Floor 12, Yihua Finance Building,Nanshan Software Industry park, Xuefu Rd,Nanshan District, Shenzhen
Factory	DDPai vision equipment Co.,Ltd
Address	Building A, Futai Industrial Park, Qingfeng south Road, Keyuancheng, Tangxia Town, Dongguan city, Guangdong province, China
Product Name	Dash Cam
Test Model No.	mini Pro

3 GENERAL DESCRIPTION OF E.U.T.

Hardware Version	V00
Software Version	V00
Operation Frequency:	802.11b/g/n(HT20): 2412MHz to 2462MHz
Modulation Type:	802.11b: DSSS (CCK, DQPSK, DBPSK) 802.11g/n: OFDM (64QAM, 16QAM, QPSK, BPSK)
Channel Spacing:	5MHz
Number of Channels:	802.11b/g/n(HT20):11
Antenna Type:	PCB Antenna
Antenna gain:	Antenna:2dBi
Remark:The Antenna Gain is supplied by the customer.BlueAsia is not responsible for this data	

4 TEST ENVIRONMENT

Environment	Temperature	Voltage
Normal	25°C	DC3.3V

5 TEST MODE

TEST MODE	TEST MODE DESCRIPTION
Transmitting mode	Keep the EUT in continuously transmitting mode with modulation. (duty cycle > 98%)
Remark: Only the data of the worst mode would be recorded in this report.	

6 MEASUREMENT UNCERTAINTY

Parameter	Expanded Uncertainty (Confidence of 95%)
Radiated Emission(9kHz-30MHz)	±4.34dB
Radiated Emission(30MHz-1000MHz)	±4.24dB
Radiated Emission(1GHz-18GHz)	±4.68dB
AC Power Line Conducted Emission(150kHz-30MHz)	±3.45dB

7 DESCRIPTION OF SUPPORT UNIT

Device Type	Manufacturer	Model Name	Serial No.	Remark
PC	N/A	N/A	N/A	N/A

8 LABORATORY LOCATION

All tests were performed at:
BlueAsia of Technical Services(Shenzhen) Co., Ltd.
Building C, No. 107, Shihuan Road, Shiyuan Sub-District, Baoan District, Shenzhen, Guangdong Province,
China
Telephone: TEL: +86-755-28682673 FAX: +86-755-28682673
No tests were sub-contracted.

9 TEST INSTRUMENTS LIST

Test Equipment Of Radiated Spurious Emissions					
Equipment	Manufacturer	Model	S/N	Cal.Date	Cal.Due
Chamber 1	SKET	966	N/A	2020/11/10	2023/11/9
Chamber 2	SKET	966	N/A	2021/07/20	2024/07/19
Spectrum	R&S	FSP40	100817	2022/09/15	2023/09/14
Receiver	R&S	ESR7	101199	2022/09/15	2023/09/14
Receiver	R&S	ESPI7	101477	2022/07/16	2023/07/15
broadband Antenna	Schwarzbeck	VULB9168	00836 P:00227	2022/09/15	2023/09/14
Horn Antenna	Schwarzbeck	BBHA9120D	01892 P:00331	2022/09/13	2025/09/12
Amplifier	SKET	LNPA_30M01G-30	SK2021060801	2022/07/16	2023/07/15
Amplifier	SKET	PA-000318G-45	N/A	2022/09/13	2023/09/12
Amplifier	SKET	LNPA_18G40G-50	SK2022071301	2022/07/14	2023/07/13
Filter group	SKET	2.4G/5G Filter group r	N/A	2022/07/16	2023/07/15
EMI software	EZ	EZ-EMC	EEMC-3A1	N/A	N/A
Loop antenna	SCHNARZBECK	FMZB1519B	00102	2022/9/14	2025/9/13
Controller	SKET	N/A	N/A	N/A	N/A
Coaxial Cable	BlueAsia	BLA-XC-02	N/A	N/A	N/A
Coaxial Cable	BlueAsia	BLA-XC-03	N/A	N/A	N/A
Coaxial Cable	BlueAsia	BLA-XC-01	N/A	N/A	N/A

Test Equipment Of Conducted Emissions at AC Power Line (150kHz-30MHz)					
Equipment	Manufacturer	Model	S/N	Cal.Date	Cal.Due
Shield room	SKET	833	N/A	2020/11/25	2023/11/24
Receiver	R&S	ESPI3	101082	2022/09/14	2023/09/13
LISN	R&S	ENV216	3560.6550.15	2022/09/14	2023/09/13
LISN	AT	AT166-2	AKK1806000003	2022/09/14	2023/09/13
ISN	TESEQ	ISNT8-cat6	53580	2022/09/14	2023/09/13
Single-channel vehicle artificial power network	Schwarzbeck	NNBM 8124	01045	2022/08/17	2023/08/16

Single-channel vehicle artificial power network	Schwarzbeck	NNBM 8124	01075	2022/08/17	2023/08/16
EMI software	EZ	EZ-EMC	EEMC-3A1	N/A	N/A

Test Equipment Of RF Conducted Test

Equipment	Manufacturer	Model	S/N	Cal.Date	Cal.Due
Spectrum	R&S	FSP40	100817	2022/09/15	2023/09/14
Spectrum	Agilent	N9020A	MY49100060	2022/09/07	2023/09/06
Spectrum	KEYSIGHT	N9030A	MY52350152	2022/07/01	2023/06/30
Spectrum	KEYSIGHT	N9010A	MY54330814	2022/07/01	2023/06/30
Signal Generator	Agilent	N5182A	MY47420955	2022/09/07	2023/09/06
Signal Generator	Agilent	E8257D	MY44320250	2022/07/01	2023/06/30
Signal Generator	Agilent	N5181A	MY46240904	2022/08/02	2023/08/01
Signal Generator	R&S	CMW500	132429	2022/09/07	2023/09/06
BluetoothTester	Anritsu	MT8852B	06262047872	2022/09/07	2023/09/06
Power probe	DARE	RPR3006W	14I00889SN042	2022/09/07	2023/09/06
DCPowersupply	zhaoxin	KXN-305D	20K305D1221363	2022/09/14	2023/09/13
DCPowersupply	zhaoxin	RXN-1505D	19R1505D050168	2022/09/14	2023/09/13
2.4GHz/5GHz RF Test software	MTS	MTS 8310	Version 2.0.0.0	N/A	N/A

10 ANTENNA REQUIREMENT

Test Standard	47 CFR Part 15, Subpart C 15.247
Test Method	N/A

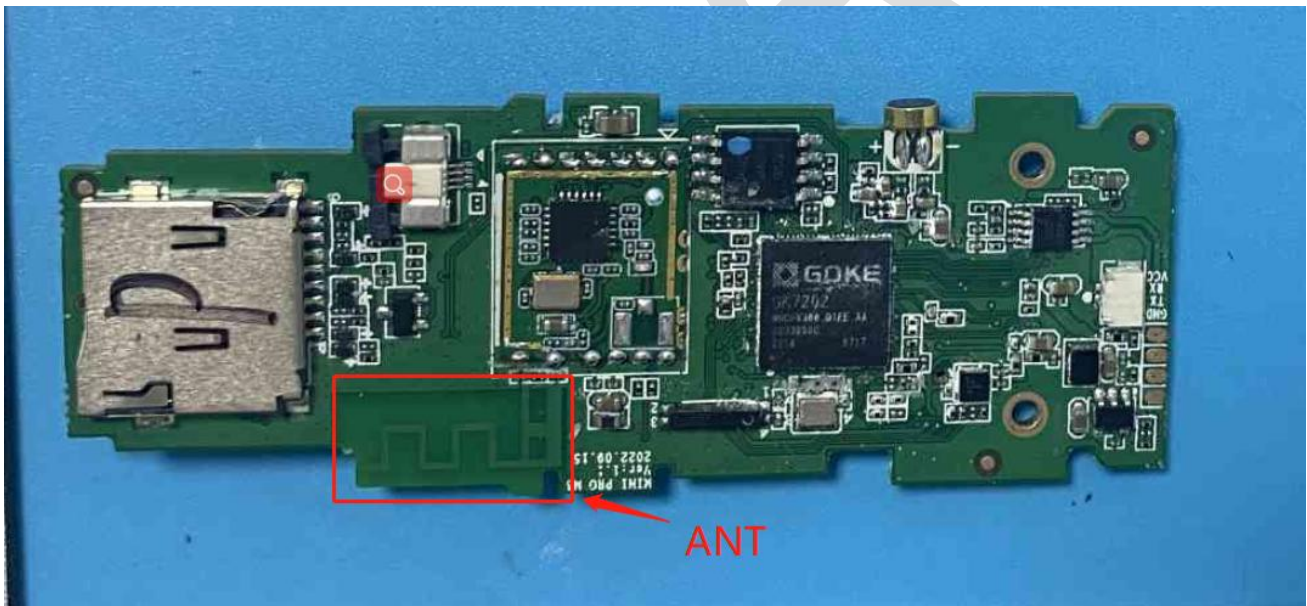
10.1 CONCLUSION

Standard Requirement:

An intentional radiator shall be designed to ensure that no antenna other than that furnished by the responsible party shall be used with the device. The use of an antenna that uses a unique coupling to the intentional radiator, the manufacturer may design the unit permanently attached antenna or of an so that a broken antenna can be replaced by the user, but the use of a standard antenna jack or electrical connector is prohibited.

EUT Antenna:

The antenna is integrated on the main PCB and no consideration of replacement. The best case gain of the antenna is 2dBi.



11 RADIATED SPURIOUS EMISSIONS

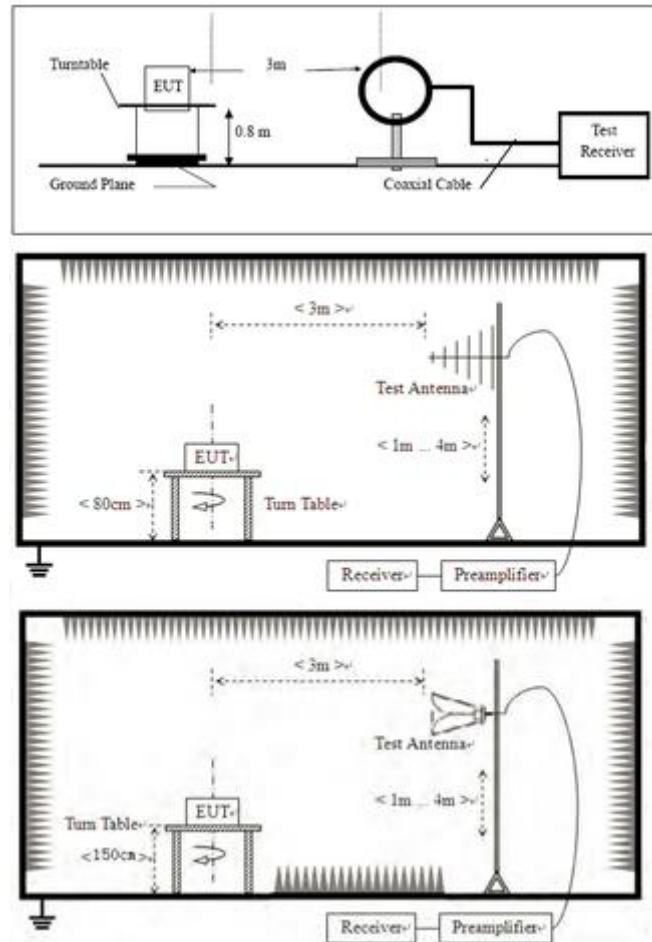
Test Standard	47 CFR Part 15, Subpart C 15.247
Test Method	ANSI C63.10 (2013) Section 6.4,6.5,6.6
Test Mode (Pre-Scan)	TX
Test Mode (Final Test)	TX
Tester	William
Temperature	25°C
Humidity	60%

11.1 LIMITS

Frequency(MHz)	Field strength(microvolts/meter)	Measurement distance(meters)
0.009-0.490	2400/F(kHz)	300
0.490-1.705	24000/F(kHz)	30
1.705-30.0	30	30
30-88	100	3
88-216	150	3
216-960	200	3
Above 960	500	3

Remark: The emission limits shown in the above table are based on measurements employing a CISPR quasi-peak detector except for the frequency bands 9-90kHz, 110-490kHz and above 1000 MHz. Radiated emission limits in these three bands are based on measurements employing an average detector, the peak field strength of any emission shall not exceed the maximum permitted average limits specified above by more than 20 dB under any condition of modulation.

11.2 BLOCK DIAGRAM OF TEST SETUP



11.3 PROCEDURE

- For below 1GHz, the EUT was placed on the top of a rotating table 0.8 meters above the ground at a 3 or 10 meter semi-anechoic chamber. The table was rotated 360 degrees to determine the position of the highest radiation.
- For above 1GHz, the EUT was placed on the top of a rotating table 1.5 meters above the ground at a 3 meter fully-anechoic chamber. The table was rotated 360 degrees to determine the position of the highest radiation.
- The EUT was set 3 or 10 meters away from the interference-receiving antenna, which was mounted on the top of a variable-height antenna tower.
- The antenna height is varied from one meter to four meters above the ground to determine the maximum value of the field strength. Both horizontal and vertical polarizations of the antenna are set to make the measurement.
- For each suspected emission, the EUT was arranged to its worst case and then the antenna was tuned to heights from 1 meter to 4 meters (for the test frequency of below 30MHz, the antenna was tuned to heights 1 meter) and the rotatable table was turned from 0 degrees to 360 degrees to find the maximum reading.
- The test-receiver system was set to Peak Detect Function and Specified Bandwidth with Maximum Hold Mode.
- If the emission level of the EUT in peak mode was 10dB lower than the limit specified, then testing could be stopped and the peak values of the EUT would be reported. Otherwise the emissions that did not have 10dB margin would be re-tested one by one using peak, quasi-peak or average method as specified and then reported in a data sheet.

- h. Test the EUT in the lowest channel, the middle channel, the Highest channel.
- i. The radiation measurements are performed in X, Y, Z axis positioning for Transmitting mode, and found the X axis positioning which it is the worst case.
- j. Repeat above procedures until all frequencies measured was complete.

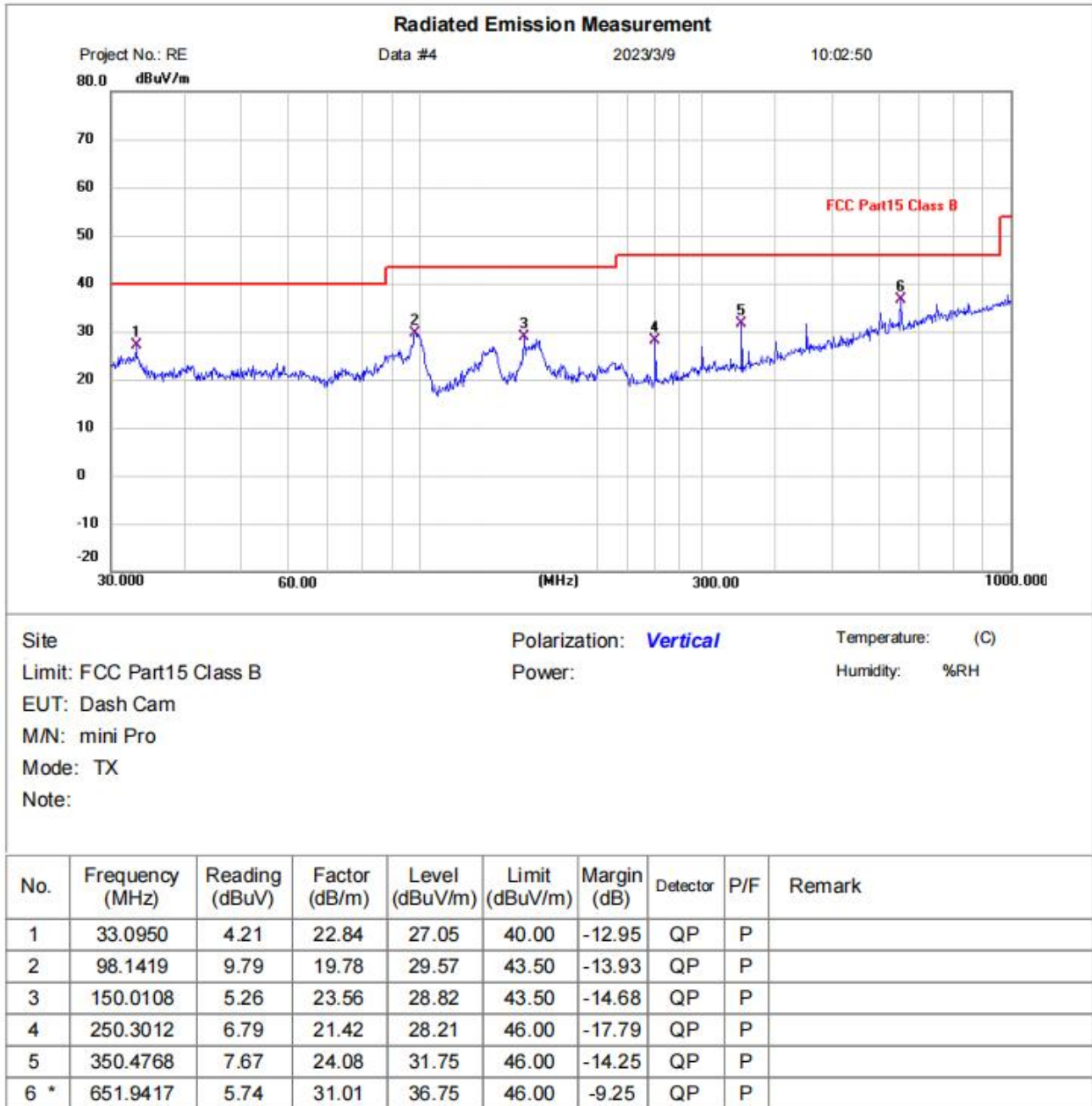
Remark:

- 1) For emission below 1GHz, through pre-scan found the worst case is the lowest channel. Only the worst case is recorded in the report.
- 2) The field strength is calculated by adding the Antenna Factor, Cable Factor & Preamplifier. The basic equation with a sample calculation is as follows:
Final Test Level = Receiver Reading + Antenna Factor + Cable Factor - Preamplifier Factor
- 3) Scan from 9kHz to 25GHz, the disturbance above 12.75GHz and below 30MHz was very low. The points marked on above plots are the highest emissions could be found when testing, so only above points had been displayed. The amplitude of spurious emissions from the radiator which are attenuated more than 20dB below the limit need not be reported. fundamental frequency is blocked by filter, and only spurious emission is shown.
- 4) For frequencies above 1GHz, the field strength limits are based on average limits. However, the peak field strength of any emission shall not exceed the maximum permitted average limits specified above by more than 20 dB under any condition of modulation. For the emissions whose peak level is lower than the average limit, only the peak measurement is shown in the report.

11.4 TEST DATA

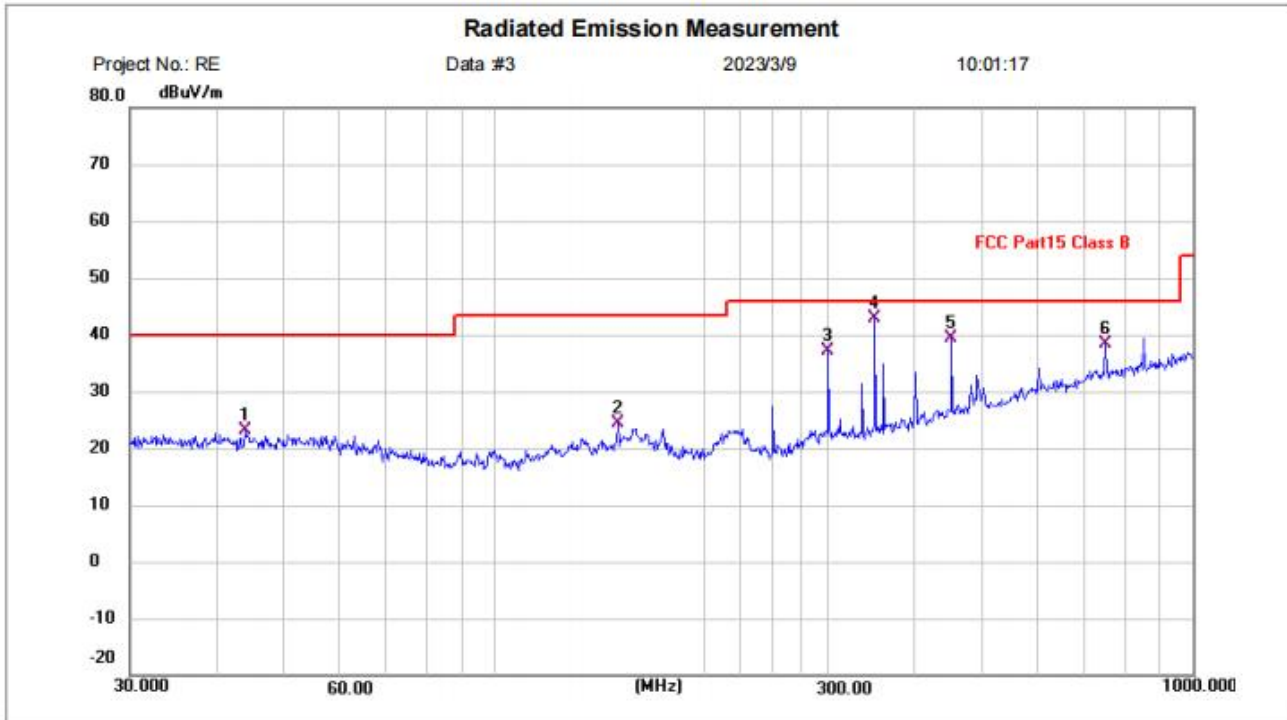
Remark: During the test, pre-scan the 802.11b/g/n mode, and found the 802.11n20 mode which it is worse case.

[TestMode: TX mode (SE) below 1G]; [Polarity: Vertical]



Test Result: Pass

[TestMode: TX mode (SE) below 1G]; [Polarity: Horizontal]



Site Polarization: **Horizontal** Temperature: (C)

Limit: FCC Part15 Class B Power: Humidity: %RH

EUT: Dash Cam

M/N: mini Pro

Mode: TX

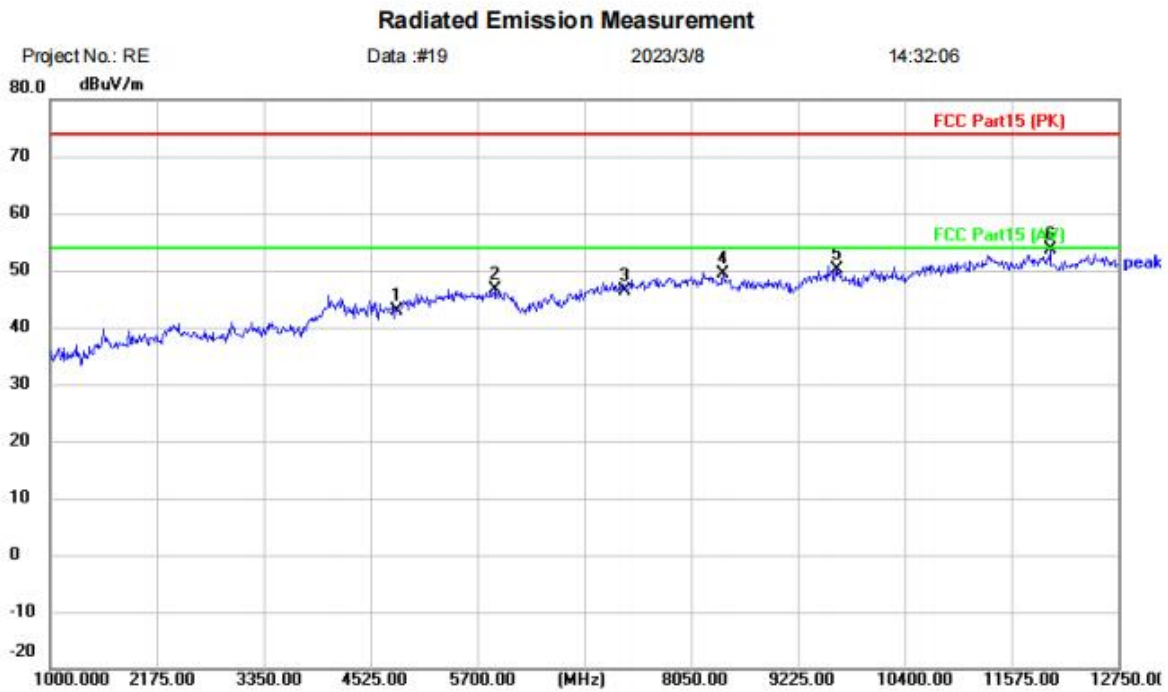
Note:

No.	Frequency (MHz)	Reading (dBuV)	Factor (dB/m)	Level (dBuV/m)	Limit (dBuV/m)	Margin (dB)	Detector	P/F	Remark
1	43.8119	0.09	22.93	23.02	40.00	-16.98	QP	P	
2	150.0108	0.89	23.56	24.45	43.50	-19.05	QP	P	
3	300.3672	13.74	23.38	37.12	46.00	-8.88	QP	P	
4 *	350.4767	18.78	24.08	42.86	46.00	-3.14	QP	P	
5	451.1350	12.15	27.32	39.47	46.00	-6.53	QP	P	
6	750.1082	5.59	32.82	38.41	46.00	-7.59	QP	P	

Test Result: Pass

Above 1GHz:

[TestMode: TX N20 low channel]; [Polarity: Horizontal]

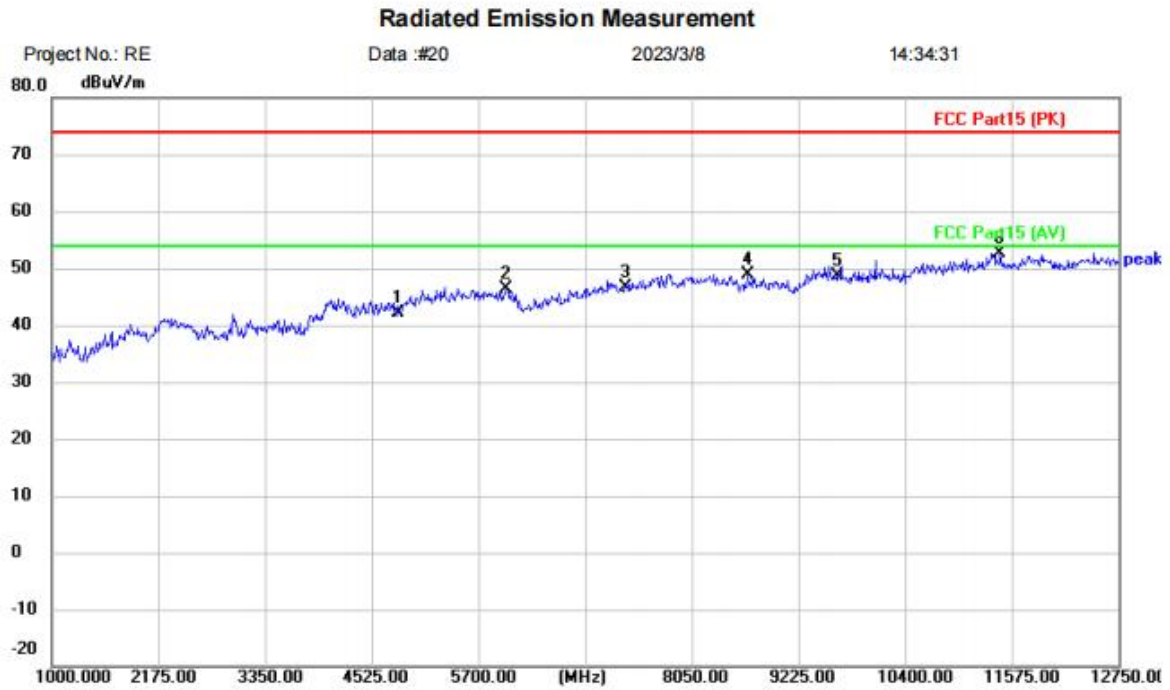


Site: Polarization: **Horizontal** Temperature: (C)
 Limit: FCC Part15 (PK) Power: Humidity: %RH
 EUT: Dash Cam
 M/N: mini Pro
 Mode: 11N20 TX-L
 Note:

No.	Mk.	Freq. MHz	Reading Level dBuV	Correct Factor dB/m	Measure- ment dBuV/m	Limit dBuV/m	Over dB	Detector	Comment
1		4824.000	38.68	4.13	42.81	74.00	-31.19	peak	
2		5888.000	39.80	6.82	46.62	74.00	-27.38	peak	
3		7326.000	38.11	8.21	46.32	74.00	-27.68	peak	
4		8402.500	40.22	9.08	49.30	74.00	-24.70	peak	
5		9648.000	39.13	11.01	50.14	74.00	-23.86	peak	
6	*	11998.000	39.79	13.90	53.69	74.00	-20.31	peak	

Test Result: Pass

[TestMode: TX N20 low channel]; [Polarity: Vertical]

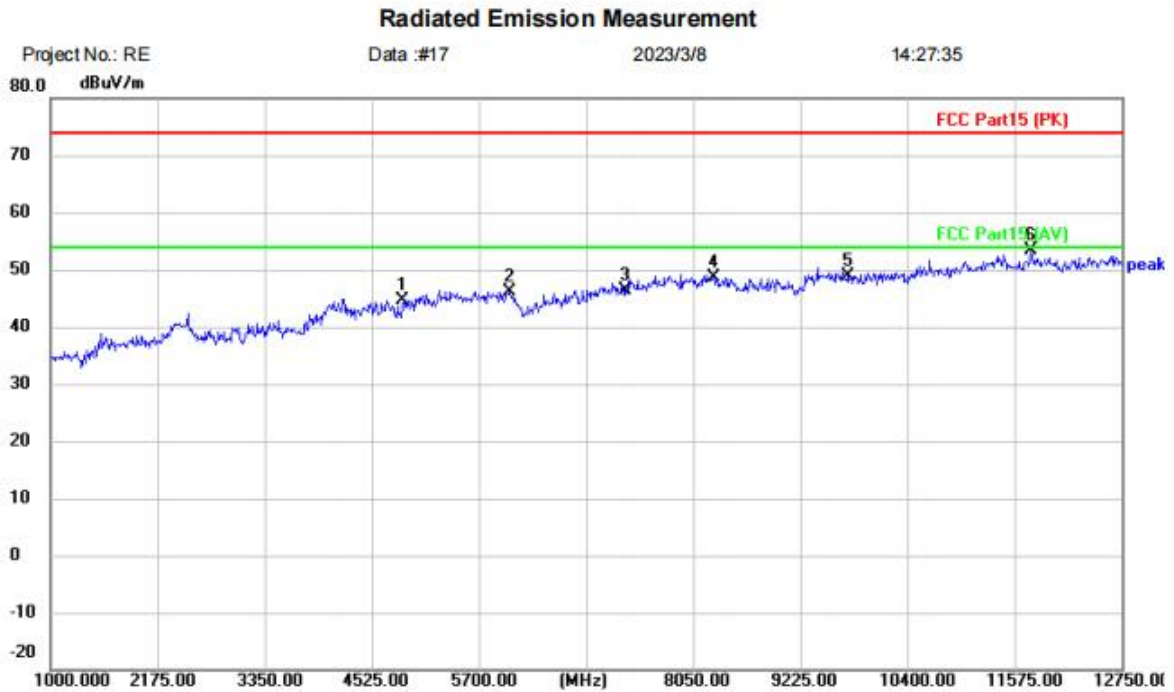


Site: Polarization: **Vertical** Temperature: (C)
 Limit: FCC Part15 (PK) Power: Humidity: %RH
 EUT: Dash Cam
 M/N: mini Pro
 Mode: 11N20 TX-L
 Note:

No.	Mk.	Freq. MHz	Reading Level dBuV	Correct Factor dB/m	Measure- ment dBuV/m	Limit dBuV/m	Over dB	Detector	Comment
1		4824.000	38.01	4.13	42.14	74.00	-31.86	peak	
2		6005.500	42.37	3.92	46.29	74.00	-27.71	peak	
3		7326.000	38.33	8.21	46.54	74.00	-27.46	peak	
4		8661.000	39.68	9.20	48.88	74.00	-25.12	peak	
5		9648.000	37.50	11.01	48.51	74.00	-25.49	peak	
6	*	11445.750	39.07	13.65	52.72	74.00	-21.28	peak	

Test Result: Pass

[TestMode: TX N20 mid channel]; [Polarity: Horizontal]

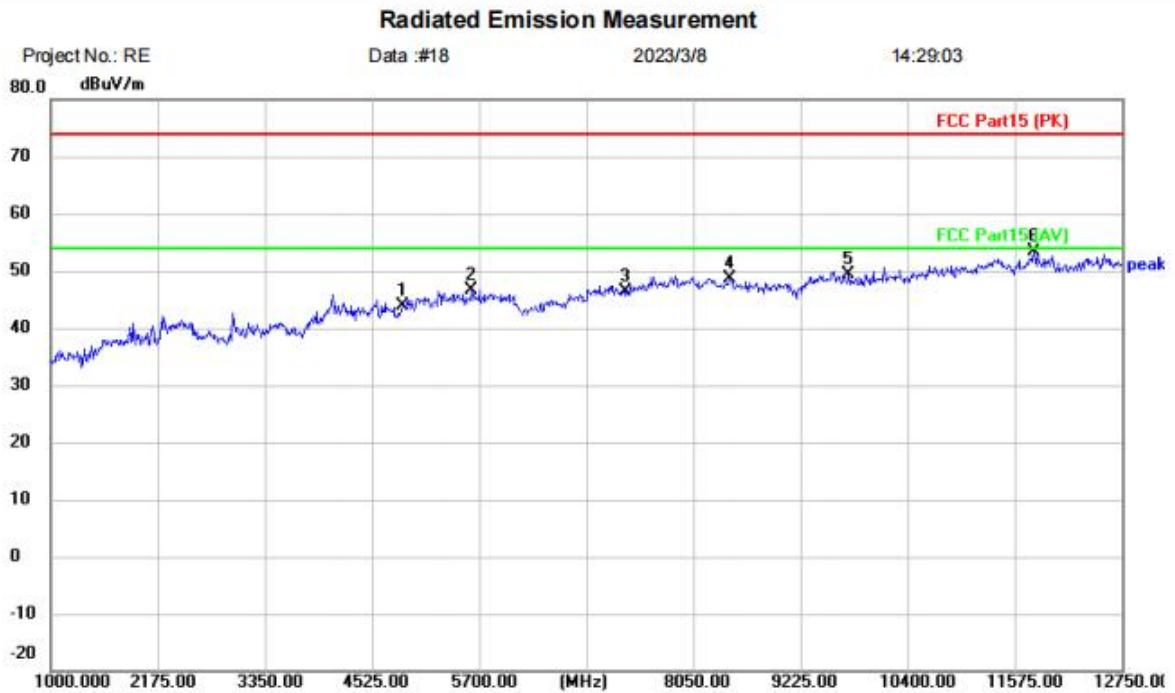


Site: Polarization: **Horizontal** Temperature: (C)
 Limit: FCC Part15 (PK) Power: Humidity: %RH
 EUT: Dash Cam
 M/N: mini Pro
 Mode: 11N20 TX-M
 Note:

No. Mk.	Freq. MHz	Reading Level dBuV	Correct Factor dB/m	Measurement dBuV/m	Limit dBuV/m	Over dB	Detector	Comment
1	4874.000	40.26	4.32	44.58	74.00	-29.42	peak	
2	6029.000	42.12	4.02	46.14	74.00	-27.86	peak	
3	7311.000	38.26	8.18	46.44	74.00	-27.56	peak	
4	8273.250	39.65	9.03	48.68	74.00	-25.32	peak	
5	9748.000	37.56	11.26	48.82	74.00	-25.18	peak	
6 *	11751.250	39.68	13.79	53.47	74.00	-20.53	peak	

Test Result: Pass

[TestMode: TX N20 mid channel]; [Polarity: Vertical]



Site: Polarization: **Vertical** Temperature: (C)
 Limit: FCC Part15 (PK) Power: Humidity: %RH
 EUT: Dash Cam
 M/N: mini Pro
 Mode: 11N20 TX-M
 Note:

No.	Mk.	Freq.	Reading Level	Correct Factor	Measurement	Limit	Over	Detector	Comment
		MHz	dBuV	dB/m	dBuV/m	dBuV/m	dB		
1		4874.000	39.44	4.32	43.76	74.00	-30.24	peak	
2		5617.750	40.03	6.72	46.75	74.00	-27.25	peak	
3		7311.000	38.27	8.18	46.45	74.00	-27.55	peak	
4		8449.500	39.46	9.10	48.56	74.00	-25.44	peak	
5		9748.000	38.12	11.26	49.38	74.00	-24.62	peak	
6	*	11786.500	39.64	13.81	53.45	74.00	-20.55	peak	

Test Result: Pass