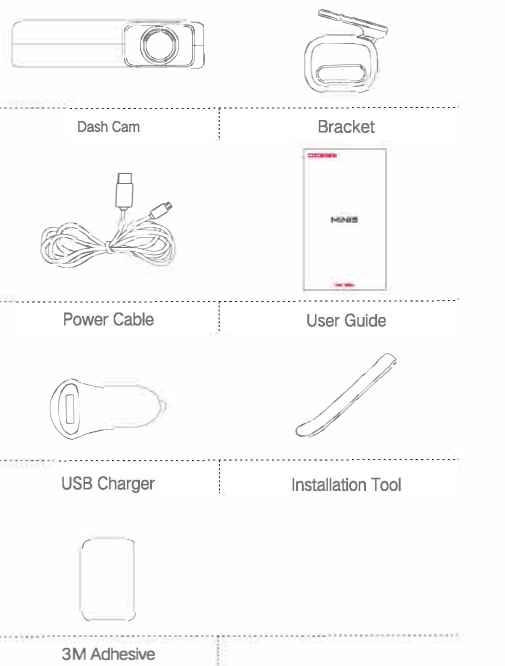
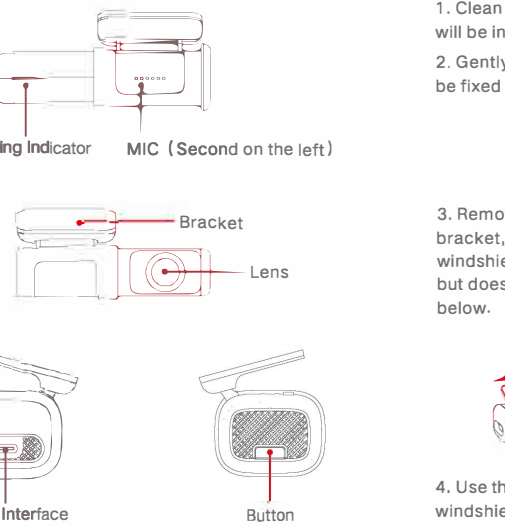
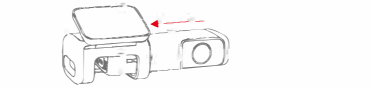


1 PACKAGE CONTENTS**2 PRODUCT OVERVIEW****3 INSTALLATION**

1. Clean the area on the windshield where the Dash Cam will be installed, otherwise it may fall off easily in later.

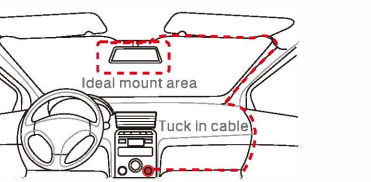
2. Gently push the Dash Cam into the bracket, which can be fixed by a magnet inside the bottom of the bracket.



3. Remove the protective film from the back of the bracket, attach the adhesive side of the mount on the windshield where it has an unobstructed view of the road but does not interfere with the driver's view. As shown below.



4. Use the installation tool to lift the edges of the windshield /molding and tuck in the power cable. Connect the Dash Cam to the car charger (plugged into cigarette lighter socket) and power cable.

**4 INDICATOR AND BUTTON**

Name	Description
Work Indicator	Normal recording: Blue light is always on.
	Parking monitoring: Red light is always on.
	Upgrading/collision/Taking pictures by voice: Purple light flashes quickly.
	USB data transmission mode: Green light is always on.
Button	Storage error: Green light flashes quickly.
	It does not support power on or off.
	Turn on/off recording: Click the button to turn on/off recording. Reset: Long press 6s to reset.

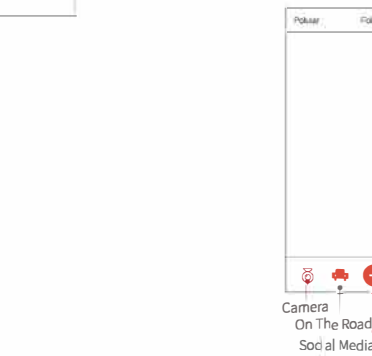
5 INSTALL DDPAI APP

For Android / IOS phones, search for "DDPAI" in the Google Play Store or Apple App Store. Download the App and install it on your phone.

Note: In order to connect to camera Wi-Fi, please list the App in your trust application list and make sure the camera's Wi-Fi is on.

6 APP INSTRUCTION**6.1 On the Road**

DDPAI users community, from here you can find nearby users, see the newest activities, user experience, installation tutorial etc.

**6.2 Camera**

1) Launch DDPai App, tap on camera, then tap on +.

2) Choose your DDPai Dash Cam from the network list (For Android system, App will start to search Dash Cam network automatically. For iOS phone: turn on WLAN from "Settings -> WLAN"). The Dash Cam's default SSID (or Wi-Fi name) is DDPai_mola MINI5_XXXX.

3) Enter the password (the default password is '1234567890').

4) Click ADD CAMERA, wait a few seconds until the preview screen show.

Preview/ Playback

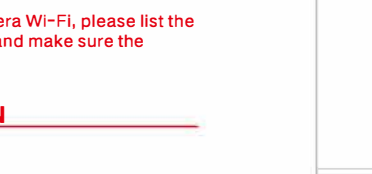
Connect to Dash Cam via direct Wi-Fi, to see recent videos and real-time display.

1) Open the DDPai App, and add your Dash Cam.

2) Select Camera tab, then tap on > button, this will bring you to preview page.

6.3 Social Media Sharing

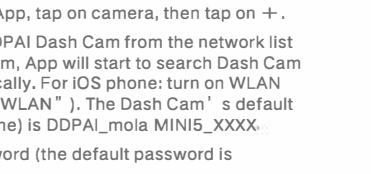
Tapping on > icon to share picture, video on social media like Facebook, Twitter etc.

**6.4 Album**

View images, videos and emergency clips, you also can edit and share them from here.

**6.5 Me**

Settings, help center and about us.

**7 UPGRADE APP AND FIRMWARE**

Update via App: If a new version of the firmware is released, opening the App will prompt you to download it. You can also open the starting App, enter "Me->About", click to detect the new version, the App will automatically download and upgrade.

Upgrade via PC: Access your Dash Cam via PC with USB data cable. Download the latest firmware for your camera, unzip and copy the content you have unzipped onto the build-in memory. Power on the camera and it will apply the firmware automatically.

8 SPECIFICATIONS

CPU: H.265 hardware encoding, HiSilicon processor

Wi-Fi: Wi-Fi/ 5GHz

G-Sensor: Built-in 6 Gyro sensor, motion locking, adjustable sensitivity via App

Storage: Built-in eMMC high speed flash, loop recording

Video Output: Wireless video output, support Android/iOS device

Lens: 140° wide angle, F1.8

Image Sensor: 8MP CMOS sensor

Image Resolution: 3840*2160

Video Resolution: Output 3840*2160, Preview 1280*720

RAM: 4Gb

Electrical Parameters: 5V, 2A

Antenna Gain: 2dBi

Frequency range: 5180~5240MHz

9 FCC STATEMENT

This device complies with Part 15 of the FCC Rules. Operation is subject to the following two conditions:
(1) This device must not cause harmful interference.
(2) This device must accept any interference received, including interference that may cause undesired operation.

Warning: Changes or modifications not expressly approved by the party responsible for compliance could void the user's authority to operate the equipment.

10 CAUTION

NOTE: This equipment has been tested and found to comply with the limits for a Class B digital device, pursuant to Part 15 of the FCC Rules. These limits are designed to provide reasonable protection against harmful interference in a residential installation. This equipment generates uses and can radiate radio frequency energy and, if not installed and used in accordance with the instructions, may cause harmful interference to radio communications. However, there is no guarantee that interference will not occur in a particular installation. If this equipment does cause harmful interference to radio or television reception, which can be determined by turning the equipment off and on, the user is encouraged to try to correct the interference by one or more of the following measures:

- Reorient or relocate the receiving antenna.
- Increase the separation between the equipment and receiver.
- Connect the equipment into an outlet on a circuit different from that to which the receiver is connected.
- Consult the dealer or an experienced radio/TV technician for help.

11 CUSTOMER SUPPORT

For customer support and firmware updates please visit www.en.ddpai.com.

You can also email a Customer Support expert at feedback@ddpai.com.

12 OTHER

This product is made in China.

Manufacturer Name: DDPai Technology Co., Ltd

Manufacturer Address: Floor 12, Yihua finance building, software park, Yuehai Sub district, Nanshan district, Shenzhen

The Warranty Period: 1 year

Recommended life: 2 years

13 CUSTOMER SUPPORT

For customer support and firmware updates please visit www.en.ddpai.com.

You can also email a Customer Support expert at feedback@ddpai.com.

14 OTHER

This product is made in China.

Manufacturer Name: DDPai Technology Co., Ltd

Manufacturer Address: Floor 12, Yihua finance building, software park, Yuehai Sub district, Nanshan district, Shenzhen

The Warranty Period: 1 year

Recommended life: 2 years

15 CUSTOMER SUPPORT

For customer support and firmware updates please visit www.en.ddpai.com.

You can also email a Customer Support expert at feedback@ddpai.com.

16 OTHER

This product is made in China.

Manufacturer Name: DDPai Technology Co., Ltd

Manufacturer Address: Floor 12, Yihua finance building, software park, Yuehai Sub district, Nanshan district, Shenzhen

The Warranty Period: 1 year

Recommended life: 2 years

17 CUSTOMER SUPPORT

For customer support and firmware updates please visit www.en.ddpai.com.

You can also email a Customer Support expert at feedback@ddpai.com.

18 OTHER

This product is made in China.

Manufacturer Name: DDPai Technology Co., Ltd

Manufacturer Address: Floor 12, Yihua finance building, software park, Yuehai Sub district, Nanshan district, Shenzhen

The Warranty Period: 1 year

Recommended life: 2 years

19 CUSTOMER SUPPORT

For customer support and firmware updates please visit www.en.ddpai.com.

You can also email a Customer Support expert at feedback@ddpai.com.

20 OTHER

This product is made in China.

Manufacturer Name: DDPai Technology Co., Ltd

Manufacturer Address: Floor 12, Yihua finance building, software park, Yuehai Sub district, Nanshan district, Shenzhen

The Warranty Period: 1 year

Recommended life: 2 years

21 CUSTOMER SUPPORT

For customer support and firmware updates please visit www.en.ddpai.com.

You can also email a Customer Support expert at feedback@ddpai.com.

22 OTHER

This product is made in China.

Manufacturer Name: DDPai Technology Co., Ltd

Manufacturer Address: Floor 12, Yihua finance building, software park, Yuehai Sub district, Nanshan district, Shenzhen

The Warranty Period: 1 year

Recommended life: 2 years

23 CUSTOMER SUPPORT

For customer support and firmware updates please visit www.en.ddpai.com.

You can also email a Customer Support expert at feedback@ddpai.com.

24 OTHER

This product is made in China.

Manufacturer Name: DDPai Technology Co., Ltd

Manufacturer Address: Floor 12, Yihua finance building, software park, Yuehai Sub district, Nanshan district, Shenzhen

The Warranty Period: 1 year

Recommended life: 2 years

25 CUSTOMER SUPPORT

For customer support and firmware updates please visit www.en.ddpai.com.

You can also email a Customer Support expert at feedback@ddpai.com.

26 OTHER

This product is made in China.

Manufacturer Name: DDPai Technology Co., Ltd

Manufacturer Address: Floor 12, Yihua finance building, software park, Yuehai Sub district, Nanshan district, Shenzhen

The Warranty Period: 1 year

Recommended life: 2 years