

XOSS

SPRINT

USER MANUAL

Thank you for choosing SPRINT

GPS cycling computer

With low power consumption

2.7 inches HD screen

More than 30 hours of battery life

Integrated accelerometer, geomagnetic

Temperature and air pressure sensors

Support all bluetooth and ANT+ sensors

ACCESSORIES LIST

SPRINT cycling computer	×1
2.5mm hex wrench	×1
Rubber pad	×1
Extended computer mount	×1
Micro USB cable	×1
User manual	×1

QUICK SETUP

Step 1: Charging

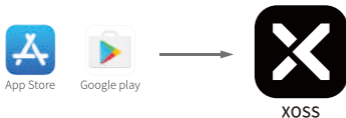
Take out the USB cable and connect to a standard 5V USB adapter, SPRINT will turn on automatically. It takes about three hours to be fully charged.



Button diagram

Step 2: Download the application

Search XOSS in Apple App Store or Google play download the application.



Step 3: Initial setting

Before you use SPRINT for the first time, you need to do some initial settings. Following the instructions on your SPRINT, use side button to select and adjust options, and use front button to confirm.

Step 4: Start using

When you complete the initial setting it will enter the data page (figure 1).

- Press the **home button** to switch between data page (figure 1) and map page (figure 3)

- Long press the **home button** a pop-up menu will show (figure 2), you can choose

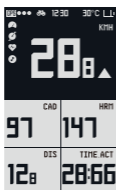
Start > start recording

Sync > APP connection

Menu > menu page

- When SPRINT is not recording, and not be operated for 60 seconds, it will enter the standby page (figure 4), you can press the **home button** to exit this page
- At data page (figure 1) you can use **side buttons** to increase or decrease the number of data fields that shows on the screen

- At data page (figure 1) you can long press the **side button +** to switch backlight mode.



Data page (figure 1)



Pop-up menu (figure 2)

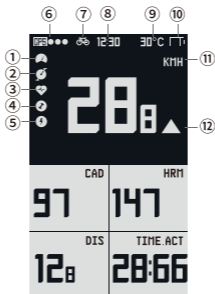


Map page (figure 3)



Standby page (figure 4)

ICON DESCRIPTION



Page layout

Sensor connection		
①		Speed
②		Cadence
③		Heart rate
④		Power
⑤		Electronic shifting

Note: Blinking icons indicate it's searching, constant light indicates connected

Battery level		
⑩		Battery > 90%
		Battery > 75%
		Battery > 50%
		Battery > 25%
		Battery < 5%

Other	
⑧	Time
⑨	Temperature

GPS signal		
⑥		Strong signal
		Good signal
		Weak signal
		No signal

Recording status		
⑦		Recording
		Pause

Unit system		
⑪	KMH	Km per hour
	MPH	Miles per hour

Speed indicator		
⑫		Above AVS
		Equal to AVS
		Below AVS

* AVS: Average speed

FUNCTION DESCRIPTION

Track record

SPRINT use GPS (Global Position System) to measure speed, calibrate time, record mileage and tracks etc. After start recording, please make sure to be outdoors and no shelter above. You should also avoid searching GPS signal when near high voltage wires and signal towers.

Note: It usually takes 30-120 seconds to search GPS signal and positioning when cold boot. It tooks less than 30 seconds when warm boot. After successful positioning it will calibrate time automatically.

Sensor connection

SPRINT support all the speed sensor, cadence sensor, heart rate monitor and power meter that use ANT+ or Bluetooth 4.0.

Select Menu in the pop-up menu, then select Device manage to bind and manage your sensor; After switch bike on the computer, it will automatically select its list of sensors, supporting up to three bicycles.

Note: When using speed sensor,you need to set the correct wheel diameter, in order to get the correct speed.

USB connection

You can connect SPRINT to computer and get the standard FIT files, when connected the following icon will appear on the screen of SPRINT, the device name is also SPRINT on the computer.

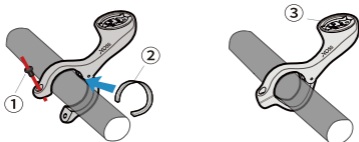


USB connection icon

Note: You should end the recording before making a USB connection

INSTALL THE MOUNT

- 1 Put the rubber pad inside the clamp ring;
- 2 Clamp it on the handlebar of your bike;
- 3 Use the 2.5mm hex wrench to tighten the screw;
- 4 Align the tabs on the back of the SPRINT with the bike mount notches, then press down slightly and **turn the SPRINT clockwise(or anti-clockwise) until it locks into place.**



WARRANTY

Thank you for purchasing our product,It has a one-year free warranty from the date of purchase,contact your original dealer for warranty service.

The following conditions are not covered by the warranty

- 1.The normal aging loss of the battery
- 2.Damage and loss of products due to improper installation
- 3.Damage caused by abnormal use,such as high temperature、 water damage etc.
- 4.Damage caused by unauthorized dismantling.

SUPPORT

Visit the website www.xoss.co

You can get installed video and more product information

PRODUCT SPECIFICATIONS

Name: SPRINT smart GPS cycling computer

Size: 55mm x95mm x22mm

Weight: 70g

Operating temperature: -10°C~50°C

Battery life: 37+ hours

Battery type: Rechargeable lithium polymer batteries

Bluetooth support: heart rate ,speed,cadence ,power

ANT+ support: heart rate,speed,cadence,power

Language: Chinese and English

Waterproof rating: IPx6

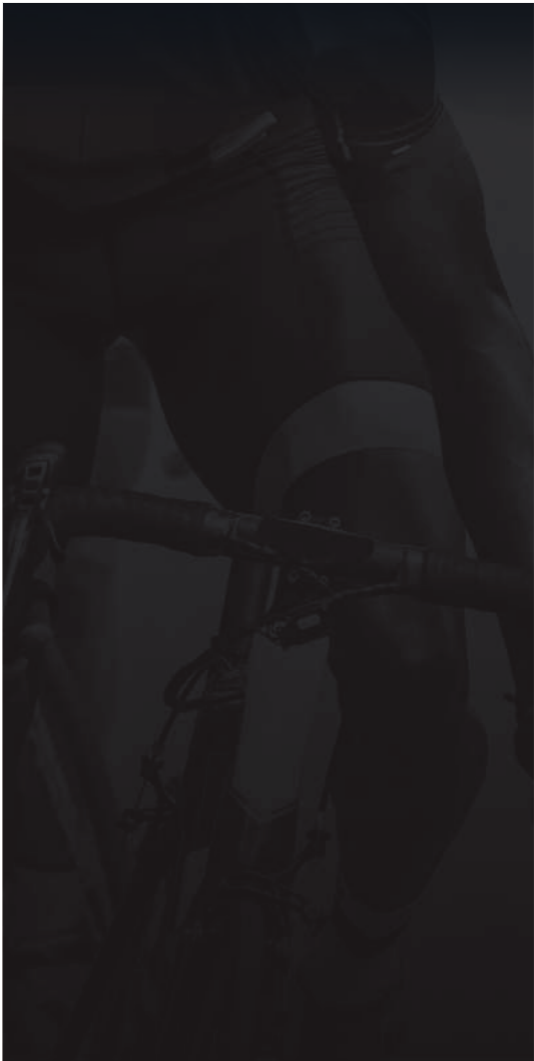
Note: This equipment has been tested and found to comply with the limits for a Class B digital device, pursuant to part 15 of the FCC Rules. These limits are designed to provide reasonable protection against harmful interference in a residential installation. This equipment generates uses and can radiate radiofrequency energy and, if not installed and used in accordance with the instructions, may cause harmful interference to radio communications. However, there is no guarantee that interference will not occur in a particular installation. If this equipment does cause harmful interference to radio or television reception, which can be determined by turning the equipment off and on, the user is encouraged to try to correct the interference by one or more of the following measures:

- Reorient or relocate the receiving antenna.
- Increase the separation between the equipment and receiver.
- Connect the equipment into an outlet on a circuit different from that to which the receiver is connected.
- Consult the dealer or an experienced radio/TV technician for help

Changes or modifications not expressly approved by the party responsible for compliance could void the user's authority to operate the equipment.

This device complies with Part 15 of the FCC Rules. Operation is subject to the following two conditions:

- (1) this device may not cause harmful interference, and
- (2) this device must accept any interference received, including interference that may cause undesired operation.



说明书册子尺寸: 70mm*140mm

12页 骑马钉