

*John Deere
Electronic Data Link v3
Installation
and Setup Manual*



JOHN DEERE

John Deere Electronic Data Link v3 (EDL3) Installation and Setup Manual. The John Deere EDL3 was designed and manufactured by IDSC Holdings LLC for Cummins Inc.

IDSC Holdings LLC retains all ownership rights to the EDL3 design and its documentation. The EDL3 source code is a confidential trade secret of IDSC Holdings LLC. You may not decipher or de-compile the EDL3, develop source code for the EDL3, or knowingly allow others to do so. The EDL3 and its documentation may not be sublicensed or transferred without the prior written consent of IDSC Holdings LLC.

This manual, as well as the software it describes, is furnished under license and may only be used or copied in accordance with the terms of such license. The content of this manual is furnished for informational use only, is subject to change without notice, and should not be construed as a commitment by IDSC Holdings LLC. IDSC Holdings LLC assumes no responsibility or liability for any errors or inaccuracies that may appear in this book.

Except as permitted by such license, no part of this publication may be reproduced, or transmitted, in any form or by any means, electronic, mechanical, or otherwise, without the prior written permission of IDSC Holdings LLC.

The Bluetooth word mark and logos are registered trademarks owned by Bluetooth SIG. Other trademarks and trade names are those of their respective owners.

©2016 IDSC Holdings LLC. All rights reserved. All other marks are trademarks or registered trademarks of the respective holders. Pictures for illustration purposes only. Specifications are subject to change without notice.

The transmitter modules contained in this product comply with regulatory standards EN 300 328 and EN 301 489-1/-17. Human exposure of these modules is below the SAR limits specified in EU recommendation 1995/519/EC.

This device complies with Part 15 of the FCC Rules. Operation is subject to the following two conditions: (1) this device may not cause harmful interference, and (2) this device must accept any interference received, including interference that may cause undesired operation. A distance of 20cm minimum should be maintained between the product and all persons during operation. This device contains FCC-IDs : 2AJFJ-EDL3, QOQWT41.

This device complies with Industry Canada licence-exempt RSS standard(s). Operation is subject to the following two conditions: (1) this device may not cause interference, and (2) this device must accept any interference, including interference that may cause undesired operation of the device.

Le présent appareil est conforme aux CNR d'Industrie Canada applicables aux appareils radio exempts de licence. L'exploitation est autorisée aux deux conditions suivantes : (1) l'appareil ne doit pas produire de brouillage, et (2) l'utilisateur de l'appareil doit accepter tout brouillage radioélectrique subi, même si le brouillage est susceptible d'en compromettre le fonctionnement.



Chapter 1

Using this Manual



- ▼ *Manual Overview, page 2*
- ▼ *Conventions, page 3*

This chapter provides an overview of this manual's organization and the conventions used throughout.

NOTE:



Screen shots used throughout this manual are for illustrative purposes only. All data shown is fictitious in nature.

Manual Overview

This manual provides basic and detailed information to support you during installation and setup of the Electronic Data Link v3 (EDL3).

This manual is composed of the following sections:

- *Table of Contents*—helps you to find the information you are looking for quickly and easily.
- *Chapter 1: Using this Manual*—provides an overview of this user's manual.
- *Chapter 2: Introducing the Electronic Data Link v3*—provides details regarding the communication modes available to you to interface with your PC. It also introduces the features of the EDL3 (i.e., the LEDs, the Reset Button, the USB port, and the Vehicle port).
- *Chapter 3: Installing the Drivers and Setting Up the Device*—provides instructions for installing EDL3 drivers and utilities, connecting the EDL3 to a vehicle, connecting to a wireless network, and testing the connection. It also provides information on using the EDL3 Explorer utility.

Each chapter begins with an “at-a-glance” list of the chapter contents, along with corresponding page numbers.

Conventions

This section provides descriptions of the conventions used throughout this guide.

Special Messages

Note

NOTE provides an explanation, comment, or tip related to the subject matter that is being discussed.

Example:

NOTE:

Refer to the page number provided for each described component for further details.

Important

IMPORTANT indicates a situation which, if not avoided, may result in damage to the test equipment or vehicle.

Example:

IMPORTANT:

Keep all cables clear of moving or hot engine parts.

Caution

CAUTION indicates a potentially hazardous situation which, if not avoided, may result in moderate or minor injury to the operator or to bystanders.

Example:

CAUTION:

Do not use the unit to perform tests on household or industrial sources.

Warning

WARNING indicates a potentially hazardous situation which, if not avoided, could result in death or serious injury to the operator or bystanders.

Example:

WARNING:



All RP1210 adapters must be disconnected before proceeding with installation.

Troubleshooting

Information intended to help you to address or anticipate potential issues are presented in the following manner:



Check to make certain that the Power LED on the EDL3 is illuminated.

Specialized Text

The following specially formatted text is used to help you to differentiate certain elements discussed within this manual:

- *Emphasis:* Used to draw your attention to particularly important information.
- **FEATURE:** Used to highlight the name of a specific feature.
Example: "Click on the **Finish** button to continue."
- **Field/Line:** Used to highlight the name of a field or a line of text from a display.
Example: "Place a check mark in the **Always trust software from IDSC Holdings LLC** check box."
- Menu Items: Used to highlight a series of menu selections.
Example: "From the Start menu, select **Programs ▶ Deere ▶ EDL3 ▶ EDL3 Explorer**"
- Screen titles: Used to highlight the title of a screen displayed.
Example: "The **Installation Complete** screen is displayed."

Chapter 2

Introducing the John Deere Electronic Data Link v3



- ▼ *Component Checklist, page 6*
- ▼ *Product Specifications, page 7*
- ▼ *System Requirements, page 8*
- ▼ *Device Features, page 9*
- ▼ *Communication Options: Wired vs Wireless, page 13*
 - ▼ *Wired USB Connection, page 13*
 - ▼ *Wireless Bluetooth Connection, page 14*
 - ▼ *Wireless Wi-Fi Connection, page 15*
 - ▼ *Mini Access Point Mode (Peer-to-Peer), page 16*
 - ▼ *Infrastructure Mode (Connecting to your Company's Network), page 17*

The Electronic Data Link v3 (EDL3) is a hardware device that enables service bay personal computers (i.e., PCs and/or laptops) to retrieve vehicle information using either wireless Bluetooth® technology, a more traditional cable connection, or Wi-Fi. Once configured, the EDL3 interfaces with your PC, enabling you to use specific PC applications to perform vehicle diagnostics.

This chapter introduces the EDL3 and provides details regarding the communication modes available to you to interface with your PC. It also introduces the features of the EDL3 (i.e., the LEDs, the Reset Button, the USB port, and the Vehicle port).

Component Checklist

The following components are included with your EDL3. Be sure you have all of the following items before using the device:

- ✓ EDL3
- ✓ Automotive A to Mini-B USB Cable (see Figure 2.2)
- ✓ W1 9-pin Deutsch Adapter
- ✓ Carrying Case

NOTE:



EDL3 drivers are included with your John Deere Service ADVISOR™ diagnostic software, or may be supplied separately via download, disk, or USB flash drive.

Product Specifications

The EDL3 Data Link Adapter is configured with the following specifications:

Feature	Data
Physical Dimensions	6.75" x 3.75" x 1.06" (171 mm x 95 mm x 27 mm)
Weight	8 oz. (0.22 kg)
Power Requirements	6 - 32 VDC @ 350 mA maximum
Operating Temperature	0 to +70 °C
API Driver	TMC RP1210A, RP1210B, and RP1210C compliant
Vehicle Protocols Supported	<ul style="list-style-type: none"> • J1708/J1587 • J1939 (250K, 500K, or 1 MB) • CAN (125K, 250K, 500K, 1 MB) (4 CAN channels with Auto Baud) • ISO 9141 • ISO 14230 (KWP2000) • ISO 15765 • CCD
USB Communication	USB Device, version 1.1
USB Connector	Latching USB Mini-B
Wired Communication	Automotive A to Mini-B USB cable 13 ft. (4 m) maximum
Wireless Communication	<ul style="list-style-type: none"> • Bluetooth® Class 1 adapter (up to 100 m range) • Dual band Wi-Fi (802.11 a/b/g/n)
Vehicle Connector	High Density D-sub 26-pin Male (HD26M)

System Requirements

Be aware of the following system requirements:

Component	Requirement
IBM PC-compatible computer	<ul style="list-style-type: none"> • 1GHz processor or more • RAM: 256MB or more (512MB recommended) • USB port, version 1.1 or higher • Wi-Fi card
Operating system	<ul style="list-style-type: none"> • Windows® 7 • Windows® 8 • Windows® 10
Bluetooth® adapter (sold separately)	<ul style="list-style-type: none"> • Bluetooth® Class 1 USB Adapter (up to 100m range) <p>Note: PCs that have Integrated Bluetooth typically use a Class 2 Bluetooth® module, which has limited range (typically 10m).</p>
Wi-Fi wireless network	<ul style="list-style-type: none"> • Dual band Wi-Fi (802.11a, b, g, or n)

Device Features

The following illustration details the features of the EDL3 device.



Figure 2.1 John Deere Electronic Data Link v3

Legend

- | | |
|--------------------|---------------------|
| A—Vehicle Port | D—Wireless Comm LED |
| B—Power LED | E—Fault LED |
| C—Vehicle Data LED | F—USB Port |

The following features behave the same whether the device is in Bluetooth® or Wi-Fi mode:

Feature	What It Does
Vehicle Port	Connects the EDL3 to a vehicle/engine for power and data.
Power LED	Illuminates when the device receives power.
Vehicle Data LED	Illuminates when the device is receiving data from the vehicle.
Fault LED	Illuminates when a problem is detected.
USB Port	Connects the device to your PC (wired connection). Latching USB Mini-B Connector for connection to PC host. Not used with iOS device.

The Wireless LED and the Reset Button, however, behave differently depending on which mode (i.e., Bluetooth or Wi-Fi) the device is in.

Feature	What It Does
Wireless Comm LED: <i>Blue: Bluetooth Mode</i>	<p>If the device is Discoverable:</p> <ul style="list-style-type: none"> • Illuminates solid blue when connected. • Blinks every second when not connected. <p>If the device is Non-Discoverable:</p> <ul style="list-style-type: none"> • Illuminates blue when connected. • Off when not connected.
Wireless Comm LED: <i>White: Wi-Fi—Mini Access Point Mode</i>	<p>Mini Access Point Mode:</p> <ul style="list-style-type: none"> • Illuminates solid white when a client PC connects to the device. • Off when no client PC is connected.

Feature	What It Does
Wireless Comm LED: <i>Orange: Wi-Fi—Infrastructure Mode</i>	Infrastructure Mode: <ul style="list-style-type: none"> • Stays off when not associated with a network Access Point. • Blinks every second when associated with an access point, but no IP address assigned. • Illuminates solid orange when successfully assigned an IP address.
Reset Button <i>Bluetooth Mode</i>	<p>The EDL3 factory default is Bluetooth mode in a Non-Discoverable status. To confirm that the device is in Bluetooth mode, press the Reset button momentarily and the Wireless LED will illuminate blue.</p> <p>In Bluetooth mode, the Reset button is used to change the status of the device. The two status modes are:</p> <ul style="list-style-type: none"> • Non-Discoverable—When the EDL3 is Non-Discoverable, it will only connect to a host device with which it has previously been paired. • Discoverable—When the EDL3 is Discoverable, a host device can detect, pair, or connect to it. <p>To change the mode from Non-Discoverable to Discoverable, press and hold the Reset button until the Wireless LED begins to flash blue (about 3 seconds).</p> <p>Once a connection is established, the LED turns solid blue. After two minutes, discoverability will time out, and the device will go back to Non-Discoverable status.</p>

Feature	What It Does
Reset Button <i>Wi-Fi Mode</i>	When using Wi-Fi, the EDL3 can be configured for either of the following modes: <ul style="list-style-type: none"> • Mini-Access Point (Wi-Fi default) • Infrastructure <p>Note: EDL3 cannot be used in Infrastructure mode until it has been configured using the Explorer utility (see <i>Using the EDL3 Explorer</i> in Chapter 3 of this manual).</p> Once Infrastructure mode has been configured, you can switch between Mini-Access Point and Infrastructure modes by pressing and holding the Reset button for three (3) seconds. The LED will change color to indicate the mode change.
Reset Button (to switch modes)	The Reset button is also used to switch back and forth between Bluetooth and Wi-Fi modes. To switch modes, press and hold the Reset button for about ten (10) seconds. All LEDs will flash momentarily to indicate that the device has been reconfigured and reset. <p>Once the device reboots, the color of the Wireless LED will reflect the wireless mode:</p> <ul style="list-style-type: none"> • Blue = Bluetooth mode • White = Wi-Fi, Mini Access Point mode • Orange = Wi-Fi, Infrastructure mode

Communication Options: Wired vs Wireless

Prior to using the EDL3, you need to decide how you want the unit to communicate with your PC. There are three options:

- Wired, USB Connection (pg. 13)
- Wireless, Bluetooth® Connection (pg. 14)
- Wireless, Wi-Fi Connection (pg. 15)

Wired USB Connection

A wired USB connection provides the advantages of high data throughput, low latency, and a high-reliability data connection.

IMPORTANT:



ECU reprogramming typically requires both high throughput and critical timing, and should *always* use a USB-to-PC wired connection.

Wired communication between the EDL3 and your PC requires an automotive A to Mini-B USB cable (shipped with the EDL3).



Figure 2.2 Automotive A to Mini-B USB Cable

NOTE:



For detailed instructions on making a wired connection, refer to *Making a Wired USB Connection* in Chapter 3 of this manual.

Wireless Bluetooth Connection

The EDL3 can be configured to use Bluetooth® wireless technology to provide communication between the EDL3 and your PC. Bluetooth® has limited bandwidth and exhibits latency when compared to WI-FI or a wired USB connection. This may result in dropped messages in situations requiring high bandwidth.

The EDL3 Data Link Adapter is equipped with a Class 1 Bluetooth® module with a range of up to 100m when communicating with another Class 1 Bluetooth® device. Most PCs that feature Integrated Bluetooth® are equipped with a Class 2 Bluetooth® module, which limits the useful range to around 10m.

NOTE:



For maximum wireless range, the use of an external, Class 1 USB Bluetooth® adapter (sold separately) is recommended.

If you decide to employ an external, Class 1 USB Bluetooth® adapter, you will have to perform the following tasks:

- Disable the integrated Bluetooth® device
- Install the drivers supplied with the external adapter
- Configure the Bluetooth® environment.

For detailed instructions on configuring the EDL3 for Bluetooth®, see *Making a Bluetooth Wireless Connection*, in Chapter 3 of this manual.

Wireless Wi-Fi Connection

The EDL3 can also be configured to use Wi-Fi to provide wireless communication between the EDL3 and your PC.

There are two network options:

- Mini Access Point Mode (*pg. 16*)
- Infrastructure Mode (*pg. 17*)

Wi-Fi performance can be affected by network congestion or radio frequency interference if there are too many other wireless devices in the vicinity. These conditions may result in dropped messages. For this reason, Wireless communication is not recommended for ECU reprogramming (i.e, reflashing).

Mini Access Point Mode (Peer-to-Peer)

The easiest and quickest way to connect your EDL3 to your PC is Mini Access Point mode. In Mini Access Point mode (also known as Access Point Emulation mode), the PC communicates directly with the EDL3. The EDL3 emulates the function of an access point, allowing the PC to connect directly to the EDL3, as if it were an access point. When the PC is connected to the EDL3 in Mini Access Point mode, neither device is connected to the company network.

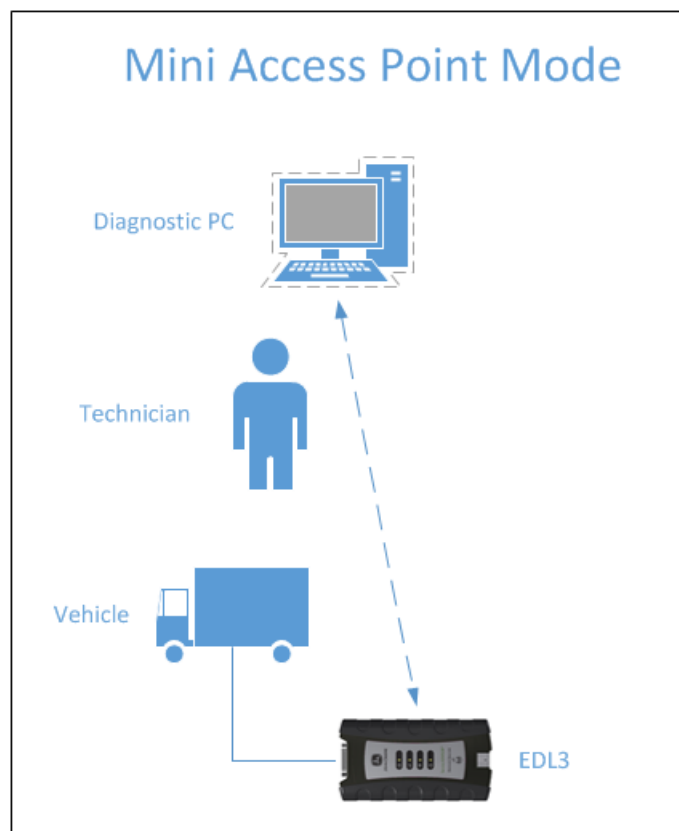


Figure 2.3 Mini Access Mode

If you use your PC's internal wireless network card to connect to your company's network and the Internet, you may want to obtain an additional wireless network card for use with the EDL3. Otherwise when you connect the EDL3 to your PC using Mini Access Point mode, you will not have access to the Internet until you have finished your session and reconnected to your company's network.

For instructions on connecting the EDL3 Data Link Adapter and your PC using Mini Access Point Mode, see *Connect Using Wi-Fi*, in Chapter 3 of this manual.

Infrastructure Mode (Connecting to your Company's Network)

In Infrastructure mode, your PC communicates with your company's computer network through a Wireless Access Point (not included), which acts as a bridge between the wireless network and the wired network. In this mode, the EDL3 is configured to communicate with the same access point. All communication between the PC and the EDL3 passes through the access point.

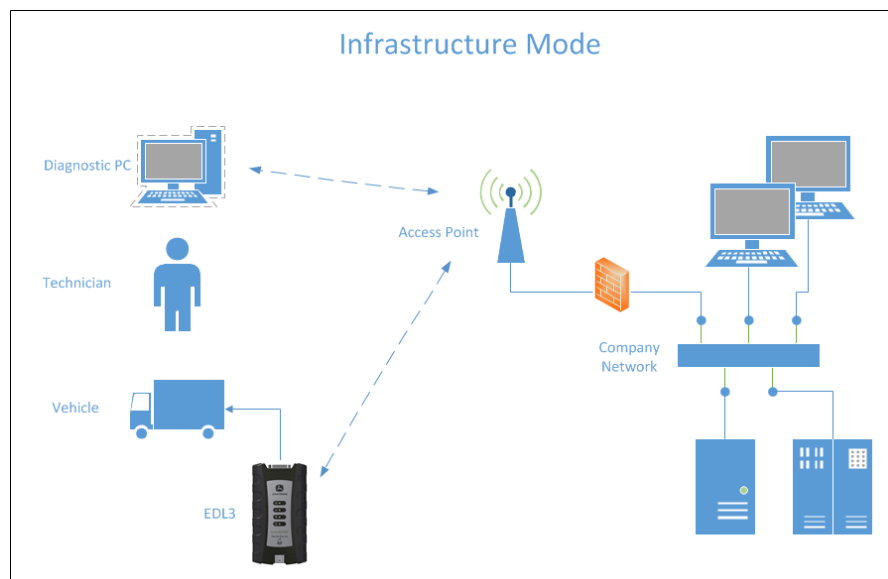


Figure 2.4 Infrastructure Mode

NOTE:



The settings for connecting to your company network may differ from one installation to another. To ensure network security, your Information Technology (IT) administrator will need to oversee the installation and specify the appropriate configuration parameters. Your IT administrator should be able to properly configure the EDL3 for infrastructure mode, using the EDL3 Explorer utility (see *Switching Modes: Mini Access Point and Infrastructure* in Chapter 3 of this manual).

Chapter 3

Installing the Drivers and Setting Up the Device



- ▼ *Installation Process Outline, pg. 20*
- ▼ *Step 1: Install the Drivers, pg. 21*
- ▼ *Step 2: Connect the EDL3 to a Vehicle, pg. 29*
 - ▼ *Making a Wired USB Connection, pg. 30*
 - ▼ *Making a Wireless Bluetooth Connection, pg. 31*
 - ▼ *Connecting via a Class 1, External Bluetooth Adapter, pg. 31*
 - ▼ *Pair the Device, pg. 34*
 - ▼ *Making a Wireless Wi-Fi Connection, pg. 38*
 - ▼ *Mini Access Point Mode, pg. 38*
 - ▼ *Infrastructure Mode, pg. 42*
- ▼ *Using the EDL3 Explorer Utility, pg. 43*

This chapter provides instructions for installing the John Deere Electronic Data Link v3 (EDL3) drivers and utilities, connecting the EDL3 to a vehicle, connecting to a wireless network, and testing the connection. It also provides information on using the EDL3 Explorer utility.

NOTE:



Screen shots used throughout this manual are for illustrative purposes only. All data shown is fictitious in nature.

Installation Process Outline

Step 1: Install the EDL3 drivers (*pg. 21*).

NOTE:



If you have previously installed John Deere Service ADVISOR™ software, the EDL3 drivers are already installed on your laptop or PC. If this is the case, skip this section and proceed to Step 2 on page 29 of this manual.

Step 2: Connect the EDL3 to the vehicle (*pg. 29*).

Connect to your PC using one of the following options:

- A wired, USB connection (*pg. 30*)
- A wireless, Bluetooth® connection (*pg. 31*)
- A wireless, Wi-Fi connection

There are two options:

- Mini Access Point Mode (*pg. 38*)
- Infrastructure Mode (*pg. 42*)

Step 1: Install the Drivers

NOTE:



If you have previously installed John Deere Service ADVISOR™ software, the EDL3 drivers are already installed on your laptop or PC. If this is the case, skip this section and proceed to Step 2 on page 29 of this manual.

If you are planning to use the EDL3 without Service ADVISOR™ software, or if you need to update the EDL3 drivers that came with Service ADVISOR™, you will need to install drivers supplied separately.

NOTE:



EDL3 drivers may be supplied via download, disk, or USB flash drive.

Remember, you *must* have Administrator security rights *and* be logged in as “Admin” to successfully complete the installation process outlined in this manual.

To install the drivers on your laptop or PC:

- 1 Do one of the following:
 - Either download the drivers to your hard disk (following instructions supplied separately).
 - or
 - Insert either the disk or the USB flash drive containing the drivers into your PC or laptop.
- 2 Locate and run the following file:
EDL3_setup.exe

The **Welcome to EDL3 Setup** screen is displayed.

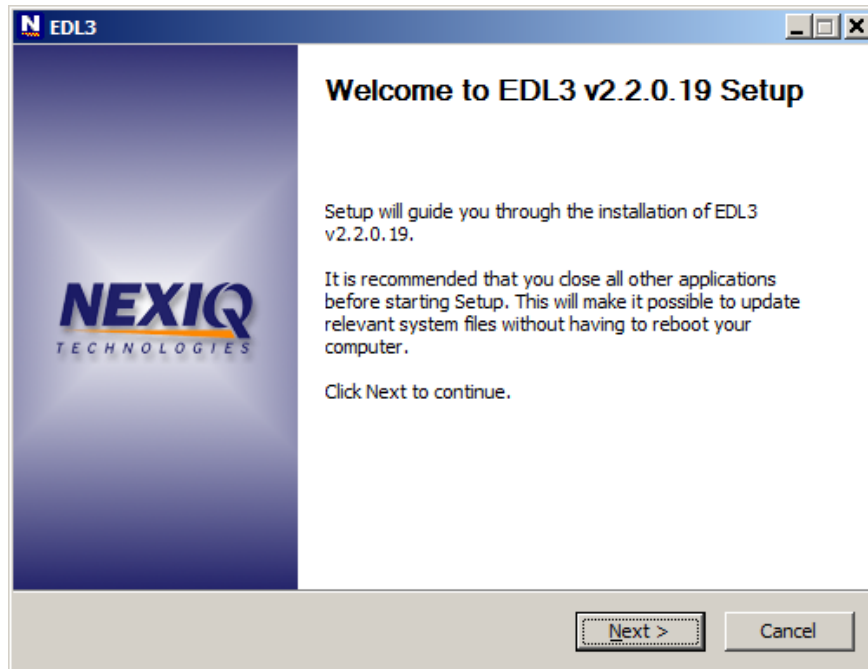


Figure 3.1 *Welcome to EDL3 Setup Screen*

- 3 Carefully read the information displayed on the screen, and follow the recommendations.
- 4 Click **Next**.

The **License Agreement** screen is displayed.

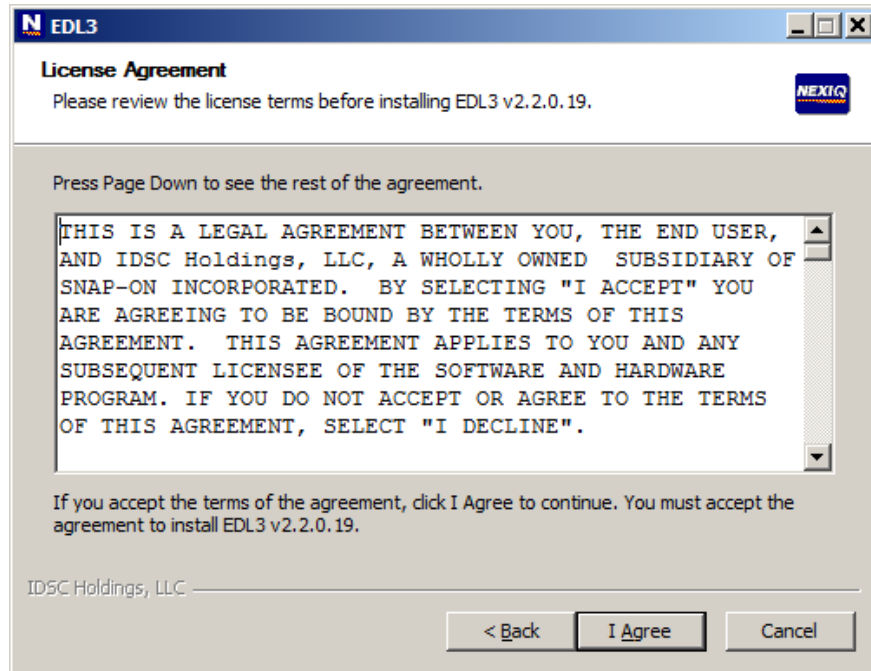



Figure 3.2 License Agreement Screen

- 5 Read all the information on this screen, then click **I Agree**.

NOTE:

 If you do not agree to the terms, click **Cancel**. A message is displayed prompting you to confirm quitting EDL3 Setup. Click **Yes** to quit.

The following warning message is displayed.

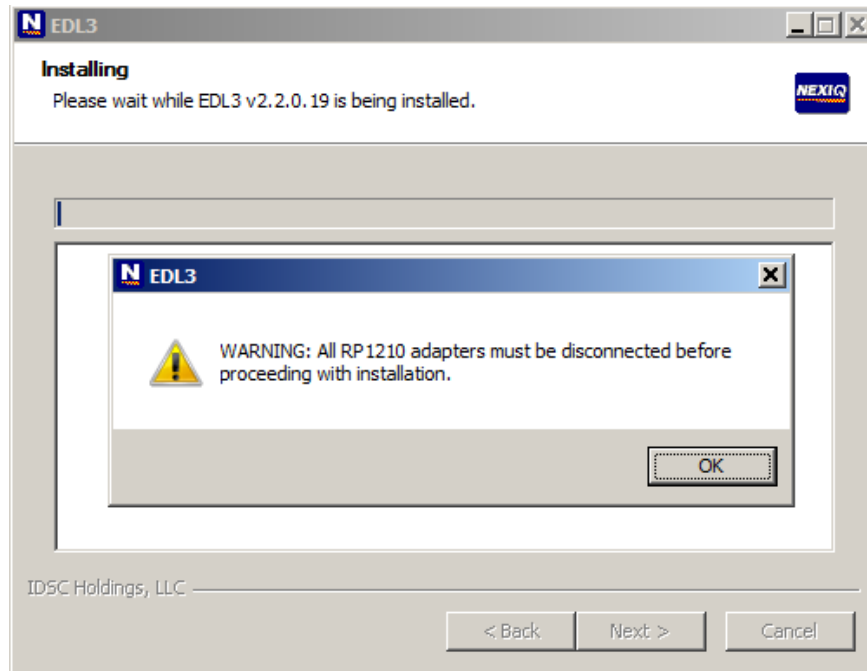


Figure 3.3 Warning Message

- 6 Carefully read the warning message, and disconnect all RP1210 adapters to which your laptop or PC might be connected prior to proceeding with the installation.
- 7 Once you have complied with the requirements of the warning message, click **OK**.

The installation begins and the following screen is displayed.

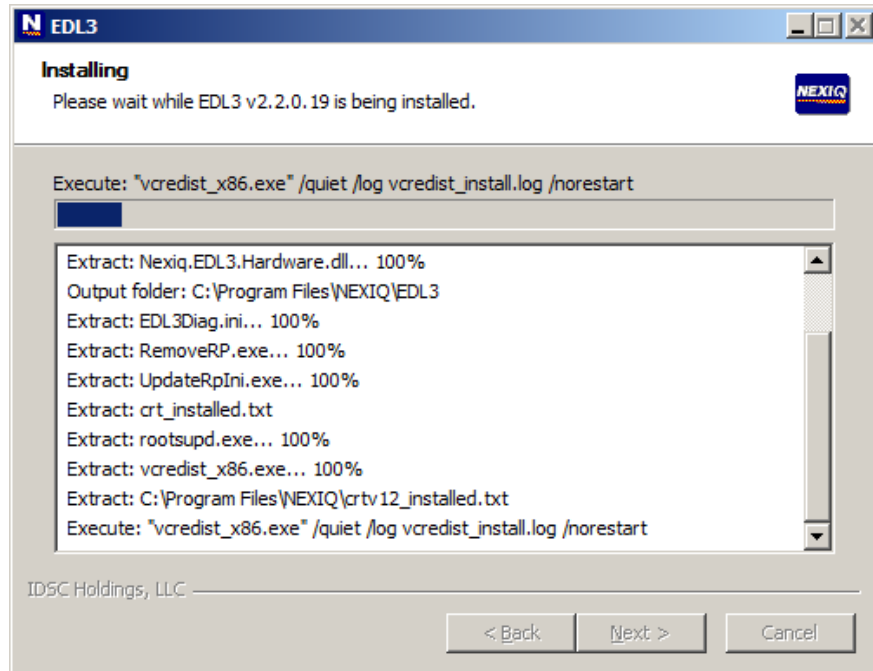


Figure 3.4 Installation Screen

If you are running Windows® 7 or Windows® 8, the following **Windows Security** dialog may be displayed.

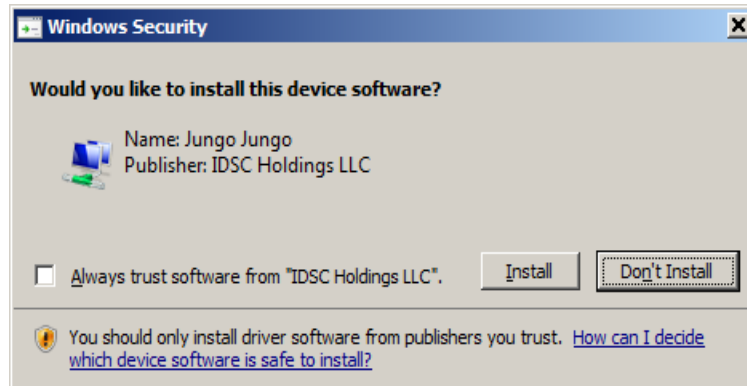



Figure 3.5 Windows Security Dialog

NOTE:

 You may want to place a check mark in the **Always trust software from “Jungo LTD”** check box. If you leave it unchecked, this dialog may be displayed more than once.

- 8 Click **Install** to continue.
- 9 Wait briefly while the installation continues.

The following completion screen is displayed.

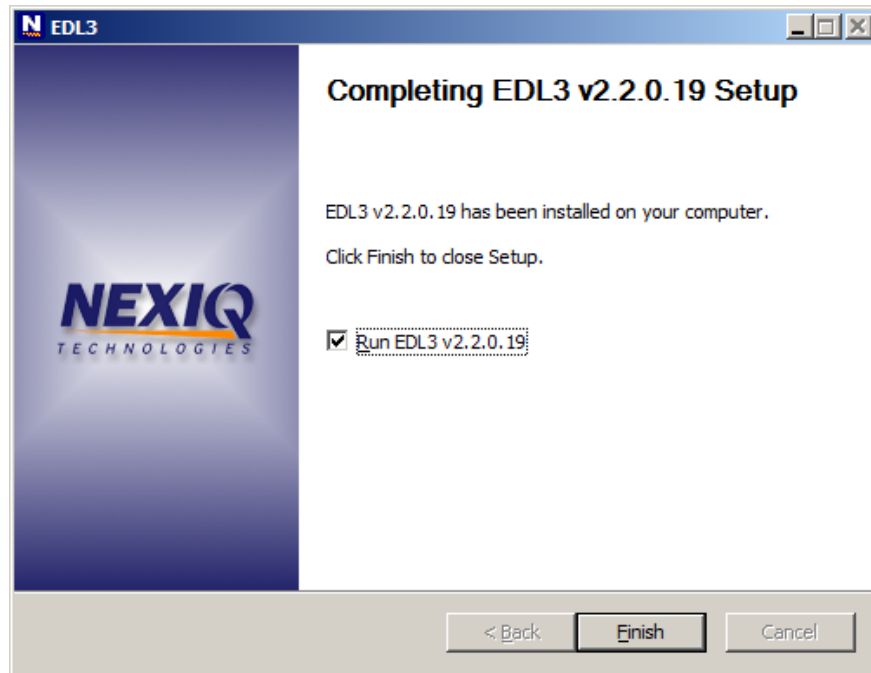


Figure 3.6 Installation Complete Screen

10 Click **Finish**.

The **EDL3 Explorer** utility opens.

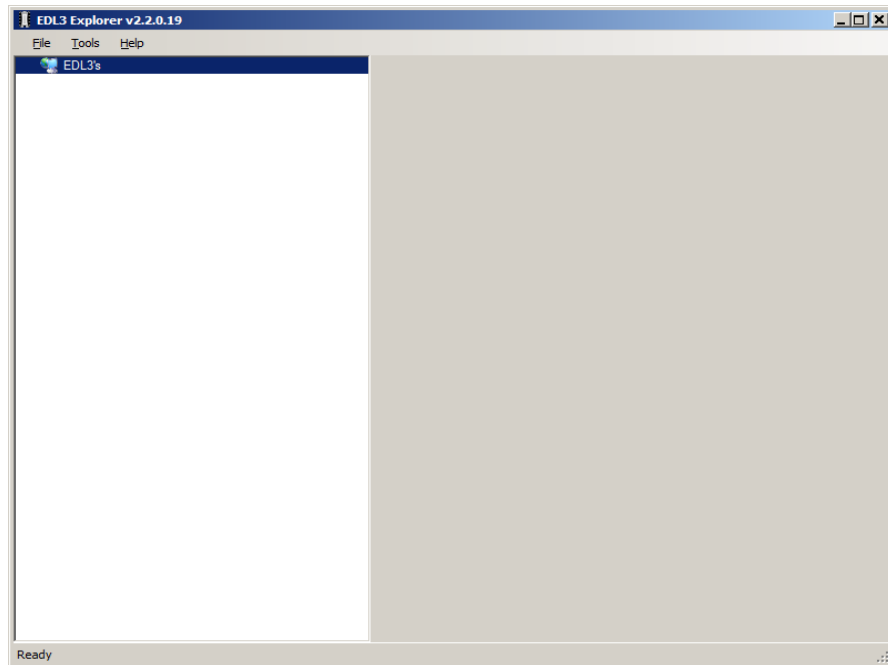


Figure 3.7 EDL3 Explorer Utility

NOTE:



For information on using the EDL3 Explorer, see *Using the EDL3 Explorer Utility* on page 43 of this manual.

11 Move on to **Step 2: Connect the EDL3 to a Vehicle**, next in this manual.

Step 2: Connect the EDL3 to a Vehicle

Once you have installed the EDL3 drivers, you are ready to connect the EDL3 to a vehicle using an adapter cable. The following adapter is included in the EDL3 kit:

- W1 9-pin Deutsch adapter

Next, you connect the EDL3 to your PC using one of the following options:

- **A wired, USB connection** (*pg. 30*)
- **A wireless, Bluetooth® connection** (*pg. 31*)
 - Connecting via a Class 1, external Bluetooth® adapter (recommended)
 - or
 - Connecting via Integrated Bluetooth®
- **A wireless Wi-Fi connection** (*pg. 38*)
 - Mini Access Point Mode (*pg. 38*)
 - or
 - Infrastructure Mode (*pg. 42*)

Making a Wired USB Connection

To connect the EDL3 to your PC using a USB cable:

- 1 Connect the USB cable (i.e., an automotive A to Mini-B USB cable) to the USB port of the PC or laptop.
- 2 Connect the other end of the cable to the port on the bottom of the device.
- 3 Connect the DB26 female end of the appropriate adapter cable to the EDL3.
- 4 Attach the other end of the adapter cable (i.e., the Deutsch connector end) to the vehicle's diagnostic connector.

NOTE:



The vehicle's diagnostic connector is typically located under the dashboard on the driver's side, or beside the driver's seat. It can also be located in the engine compartment, near the electronic control module (ECM).

Your device is ready to use.

Making a Wireless Bluetooth Connection

NOTE:



The EDL3 factory default is Bluetooth® mode in a Non-Discoverable status. To confirm that the device is in Bluetooth® mode, press the Reset button momentarily and the Wireless LED will illuminate blue.

The EDL3 is equipped with a Class 1 Bluetooth® module with a range of up to 100m when communicating with another Class 1 Bluetooth® device. Most PCs that feature Integrated Bluetooth® are equipped with a Class 2 Bluetooth® module, which limits the useful range to around 10m.

For maximum wireless range, the use of an external, Class 1 USB Bluetooth® adapter (sold separately) is recommended.

There are two connection options:

- Connecting via a Class 1, external Bluetooth® adapter (recommended)
- Connecting via Integrated Bluetooth®

The procedure for connecting via Integrated Bluetooth® is much the same as connecting via an external Bluetooth® adapter. To connect using your PC's Integrated Bluetooth®, skip Steps 3 and 4 on page 33 of the following procedure.

Connecting via a Class 1, External Bluetooth Adapter

If you decide to employ an external, Class 1 USB Bluetooth® adapter, you will have to perform the following tasks:

- Disable your PC's Integrated Bluetooth® device
- Install the drivers supplied with the external adapter, if required

NOTE:



Depending on the Bluetooth® adapter you are using for your wireless connection, you may need to install the necessary Bluetooth® drivers. For some adapters the drivers will install automatically.

- Connect the EDL3 to a vehicle
- Pair the EDL3 with your PC (pg. 34)

To connect via an external Bluetooth adapter:

- 1 Click on the **Show Hidden Icons** arrow in your PC's System Tray.

The hidden icons are displayed.

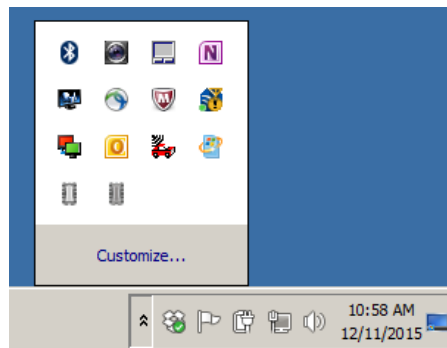


Figure 3.8 Hidden Icons

- 2 Right-click on the Bluetooth[®] icon .

NOTE:



If your PC has Integrated Bluetooth, skip Steps 3 and 4 and move on to Step 5.

- 3 Click on **Turn Adapter Off** (option may not be available in all configurations).
- 4 Plug the **Class 1 Bluetooth[®] adapter** you have selected into an available USB port on your PC, and wait while Windows[®] installs the required drivers.

NOTE:



Depending on the Bluetooth[®] adapter you are using for your wireless connection, you may need to install the necessary Bluetooth[®] drivers. For some adapters the drivers will install automatically.


The following message is displayed:

Installing device driver software.

When the installation is complete, the following message is displayed:


Your device is ready to use.

NOTE:

-
-  Some Bluetooth® adapters may require you to configure a Bluetooth® environment. If this is necessary, an Initial Bluetooth Configuration Wizard screen will display at the conclusion of the adapter installation process. If this happens, use the CD that came with the adapter.
-

- 5 Connect the DB26 female end of the appropriate adapter cable to the EDL3.
- 6 Attach the other end of the adapter cable (i.e., the Deutsch connector end) to the vehicle's diagnostic connector.

NOTE:

-
-  The vehicle's diagnostic connector is typically located under the dashboard on the driver's side, or beside the driver's seat. It can also be located in the engine compartment, near the electronic control module (ECM).
-


—At this point, the **Power LED** (green) on the EDL3 should be illuminated (on).

—If the **Power LED** is not illuminated, turn the vehicle's key to the ON position, leaving the engine off

- 7 Press and hold the **Reset Button** until the Wireless LED begins to flash blue (about 3 seconds).

This will put the EDL3 in Discoverable Mode. When the EDL3 is Discoverable, a host device can detect, pair, or connect to it. Once a connection is established, the LED turns solid blue. After two minutes, discoverability will time out, and the device will go back to Non-Discoverable status.

NOTE:

-
-  See **Device Features** in Chapter 2 of this manual for a detailed discussion of the Reset Button.
-

- 8 Move on to **Pair the Device**, next in this manual.

The **Add a device** screen is displayed.

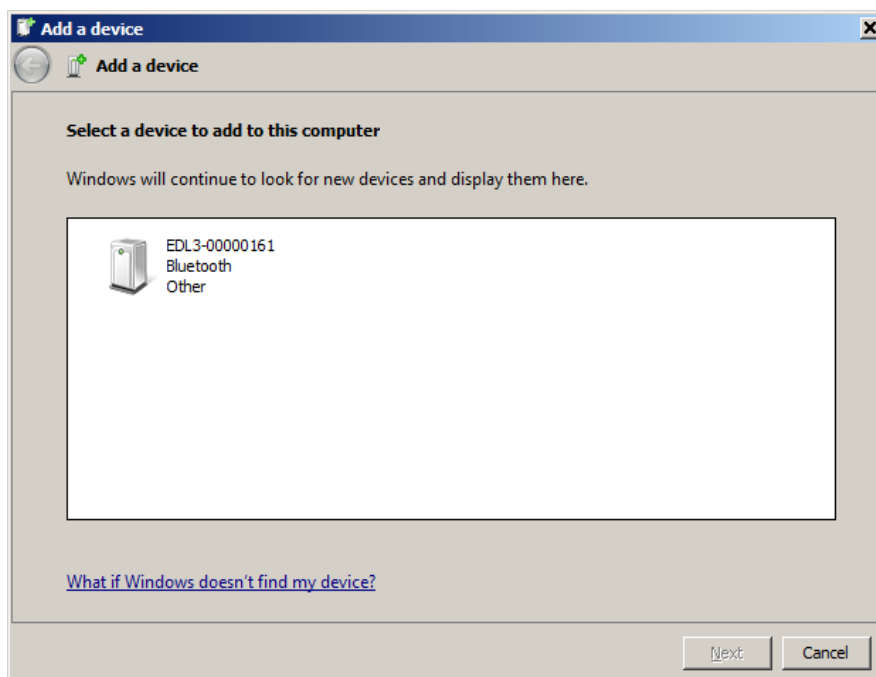


Figure 3.10 Add a Device Screen

- 4 Select the device displayed that matches the serial number on the back of your EDL3 (e.g., **EDL3_XXXXXX**).

Your selection is highlighted.

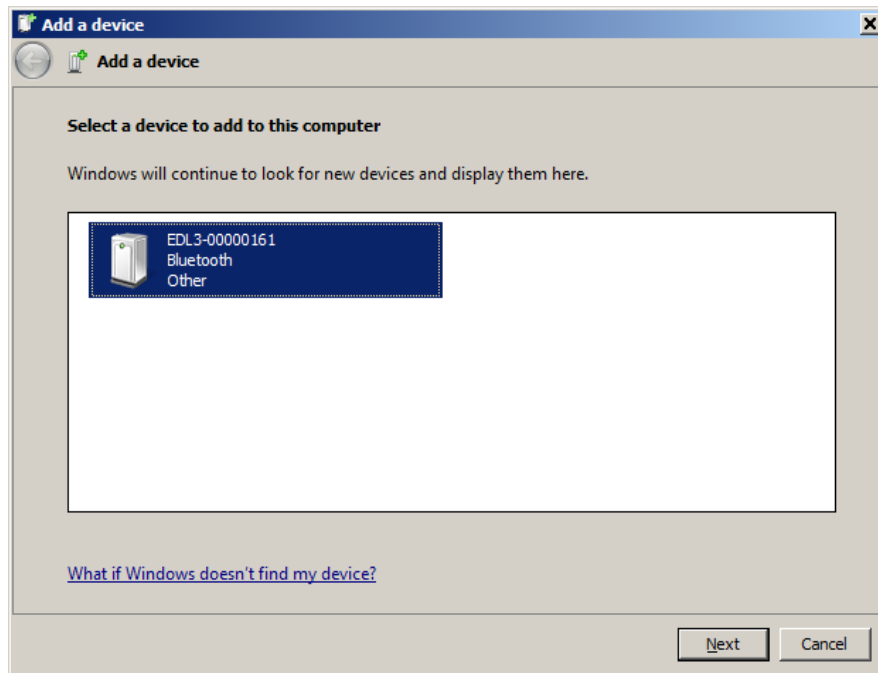


Figure 3.11 Add a Device Screen Refreshed

- 5 Click **Next**.

NOTE:



You may be prompted to enter a pairing code for the device. If you are prompted to enter a PIN or pairing code, enter **NEXIQ** (all uppercase).

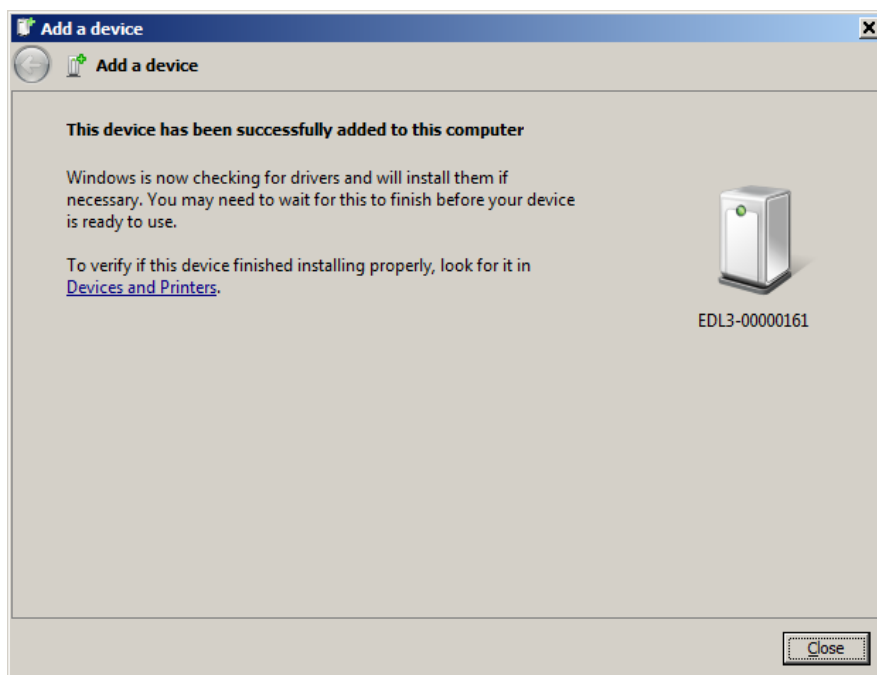


Figure 3.12 Device Successfully Added Screen

The following System Tray message is displayed.

Your device is ready to use.

- 6 Click **Close**.

Making a Wireless Wi-Fi Connection

When using Wi-Fi, the EDL3 can be configured for either of the following modes:

- Mini Access Point, the Wi-Fi default (pg. 38)
- Infrastructure (pg. 42)

NOTE:



EDL3 cannot be used in Infrastructure mode until it has been configured using the EDL3 Explorer utility (see *Using the EDL3 Explorer* in Chapter 3 of this manual).

Mini Access Point Mode

The easiest and quickest way to connect your EDL3 to your PC is Mini Access Point mode. In Mini Access Point mode (also known as Access Point Emulation mode), the PC communicates directly with the EDL3. The EDL3 emulates the function of an access point, allowing the PC to connect directly to the EDL3, as if it were an access point. When the PC is connected to the EDL3 in Mini Access Point mode, neither device is connected to the company network.

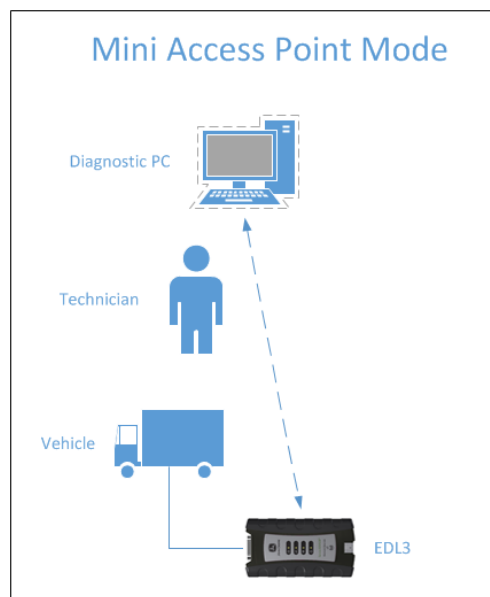



Figure 3.13 Mini Access Mode

To connect the EDL3 to your PC using Mini Access Point Mode:

- 1 Connect the DB26 female end of the appropriate adapter cable to the connector on the top of the EDL3.
- 2 Attach the other end of the adapter cable (i.e., the Deutsch connector end) to the vehicle's diagnostic connector.

NOTE:

 The vehicle's diagnostic connector is typically located under the dashboard on the driver's side, or beside the driver's seat. It can also be located in the engine compartment, near the electronic control unit (ECU).


—At this point, the **Power LED** (green) on the EDL3 should be illuminated (On).

—If the **Power LED** is not illuminated, turn the vehicle's key to the ON position, leaving the engine Off.

- 3 Press and hold the **Reset Button** for about ten (10) seconds to switch from Bluetooth Mode (the factory default) to Mini Access Point Mode.

All of the LEDs on the device will flash momentarily to indicate that the device has been reconfigured. Once the connection is complete, the Wireless LED will display white to indicate Wi-Fi Mini Access Point Mode.

NOTE:

 See **Device Features** in Chapter 2 of this manual for a detailed discussion of the Reset Button.

- 4 Navigate to the **System Tray** on your PC.



Figure 3.14 Windows® System Tray

- 5 Click on the **Network** icon  in the System Tray.


The **Network Selection** screen is displayed.



Figure 3.15 Network Selection Screen

- 6 Select **EDL3_XXXXXX** from the list (where XXXXXX is the serial number of the EDL3).

NOTE:

 If EDL3_XXXXXX is not displayed, make sure you are connected to the vehicle. Also, make sure you are within range (i.e., within 100 ft.). You may need to move your PC closer to the vehicle.

EDL3_xxxxxx is highlighted.

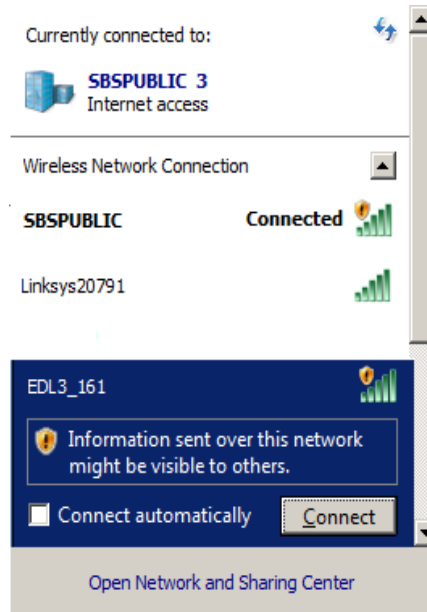


Figure 3.16 Selection Highlighted

7 Click **Connect**.

The device is now connected and ready to use.

Infrastructure Mode

In Infrastructure mode, your PC communicates with your company's computer network through a Wireless Access Point (not included), which acts as a bridge between the wireless network and the wired network. In this mode, the EDL3 is configured to communicate with the same access point. All communication between the PC and the EDL3 passes through the access point.

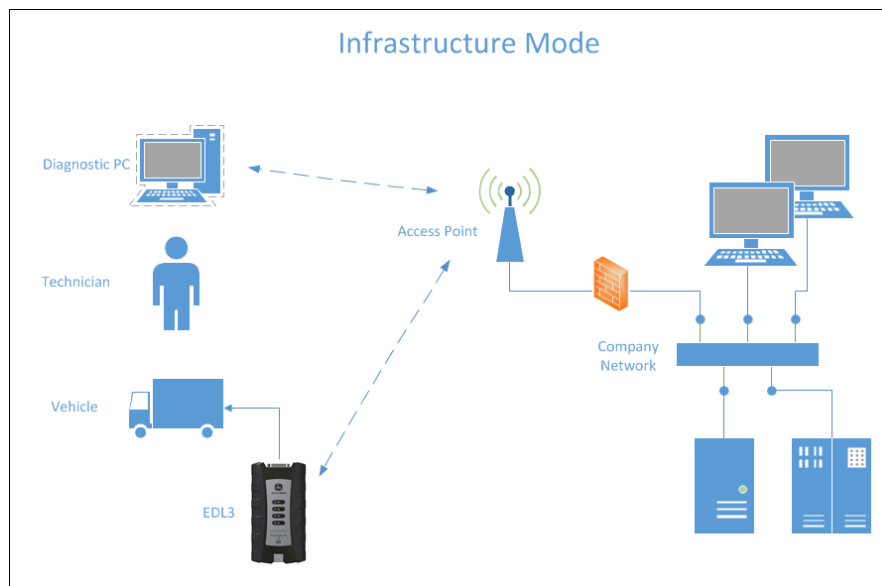


Figure 3.17 Infrastructure Mode

NOTE:



The settings for connecting to your company network may differ from one installation to another. To ensure network security, your Information Technology (IT) administrator will need to oversee the installation and specify the appropriate configuration parameters. Your IT administrator should be able to properly configure the EDL3 for infrastructure mode, using the EDL3 Explorer utility (see *Switching Modes: Mini Access Point and Infrastructure* on page 46 of this manual).

Using the EDL3 Explorer Utility

The EDL3 Explorer utility opened automatically when you installed the EDL3 drivers and utilities (see Figure 3.7, on page 28).

To re-open the EDL3 Explorer once it has been closed, click on the **Show Hidden Icons** arrow in your PC's System Tray.

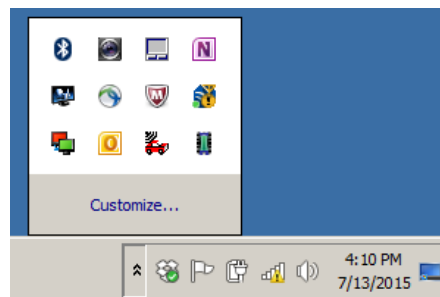



Figure 3.18 *Hidden Icons*

Then, double-click on the EDL3 icon .

NOTE:



You can also access the EDL3 Explorer from your PC's Start menu. Click **Start** and then select **All Programs** ▶ **Deere** ▶ **EDL3** ▶ **EDL3 Explorer**.

The **EDL3 Explorer** opens.

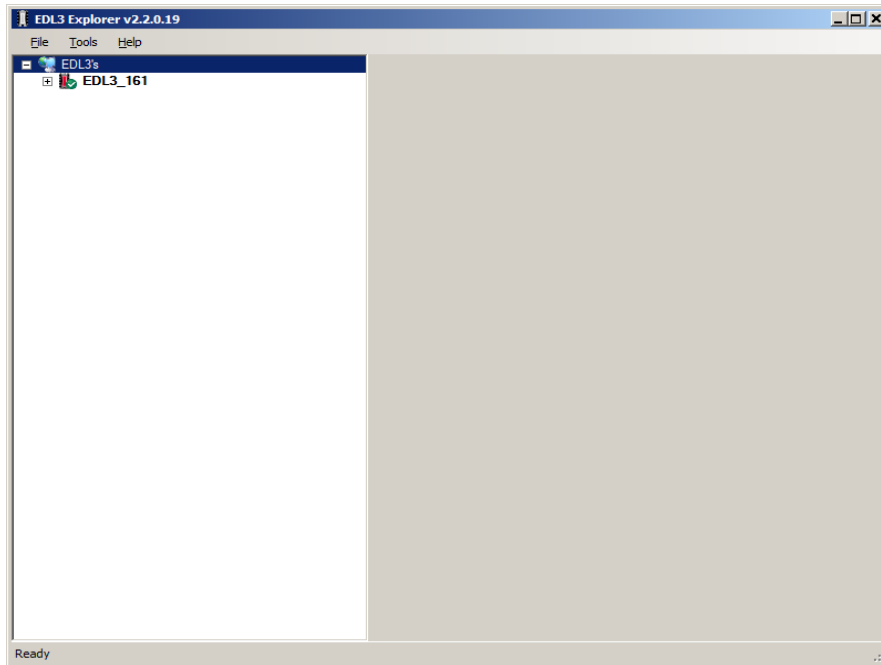


Figure 3.19 EDL3 Explorer

The following menu options are provided:

- File (pg. 48)
- Tools (pg. 49)
- Help (pg. 52)

Each menu option includes a number of features. Each of the menu options are discussed in the following sub-sections.

When you click on a EDL3 in the list in the left pane, the Configuration tab is displayed (Figure 3.20).

The Configuration Tab

The **Configuration** tab provides the following information:

- Device:
 - Name
 - MAC Address
- Wireless Settings
- Internet Protocol (TCP/IP) Settings

This information can be useful when troubleshooting network connection problems. You also use the Configuration tab when switching between the two wireless **Connection Types** (i.e., Wireless and Bluetooth), or when setting up a Wi-Fi connection in Infrastructure Mode.

To access the Configuration tab:

- 1 Click on an **EDL3_xxxxxx** in the list in the left pane of the Explorer.

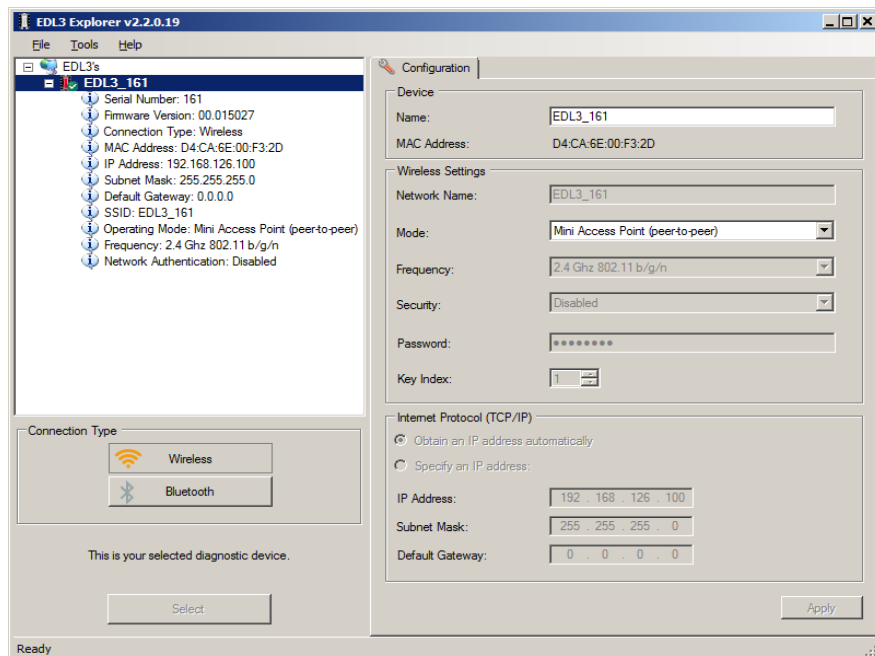


Figure 3.20 Configuration Tab

Switching Modes: Mini Access Point and Infrastructure

From the EDL3 Explorer Configuration tab, you can use the **Mode** drop-down menu under Wireless Settings to switch between Mini Access Point and Infrastructure modes.

NOTE:



For a graphic depiction of a typical Infrastructure Mode setup, see Figure 3.17, on page 42.

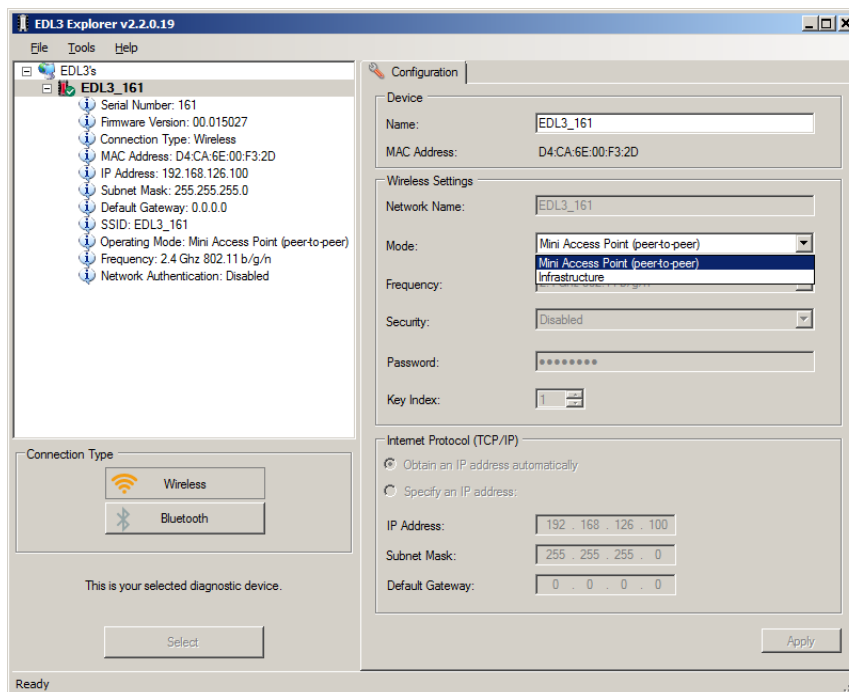


Figure 3.21 Wireless Settings: Mode Drop-down Menu

NOTE:



You can also use the Reset Button to switch from Infrastructure Mode back to Mini Access Point Mode (the Wi-Fi default). Just push and hold the button until the wireless LED changes color from orange to white (about 3 seconds).

Once, you have selected **Infrastructure** from the drop-down menu, additional fields in the Wireless Settings portion of the screen are available.

The following **Wireless Settings** fields are available:

- Network Name
- Frequency (used to switch between 2.4 and 5 GHz)
- Security (WEP, WPA/WPA2)
- Password
- Key Index (only available with the WEP security selection)

NOTE:



The settings for connecting to your company network may differ from one installation to another. To ensure network security, your Information Technology (IT) administrator will need to oversee the installation and specify the appropriate configuration parameters.

The **Internet Protocol (TCP/IP)** portion of the screen is also available to you to enter the required settings. There are two options:

- Obtain an IP address automatically (i.e., a dynamic IP address)
- Specify an IP address (i.e., a static IP address that does not change)
 - IP Address
 - Subnet Mask
 - Default Gateway

NOTE:



You will need to obtain this information (i.e., IP Address, Subnet Mask) from the designated IT person or network administrator for your location. Depending on how your local network is configured, you may also need to enter Default Gateway information.

The File Menu

The File menu has one feature, Exit. You use the Exit feature to close the EDL3 Explorer.

To exit the EDL3 Explorer:

- 1 Select **File** from the EDL3 Explorer menu bar.

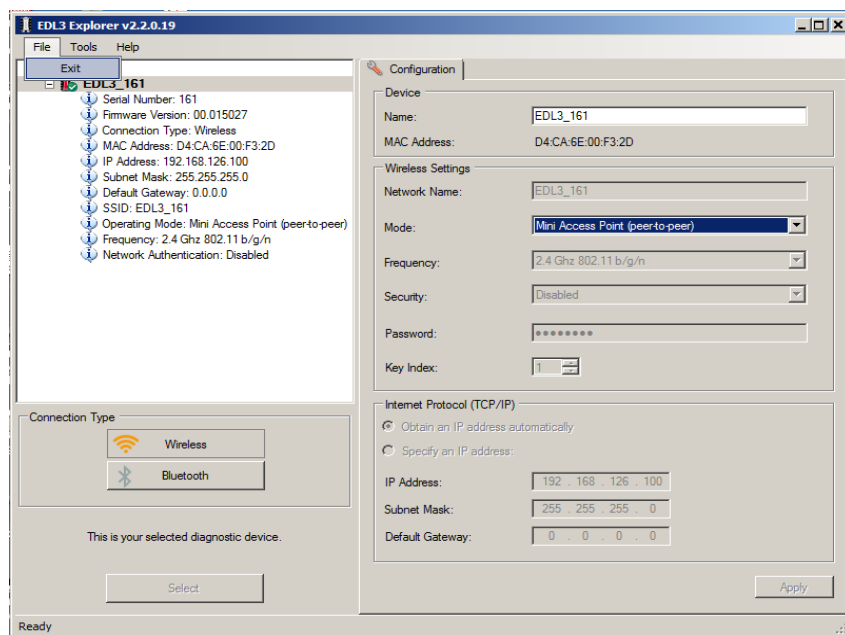


Figure 3.22 Exit Selected

- 2 Select **Exit**.

The **EDL3 Explorer** closes.

The Tools Menu

The Tools menu provides the following features:

- Ping
- Options

Ping

The Ping feature uses the PING protocol to check for the presence of a device on the network.

To check for a device:

- 1 Select **Tools** from the EDL3 Explorer menu bar.
- 2 Select **Ping**.

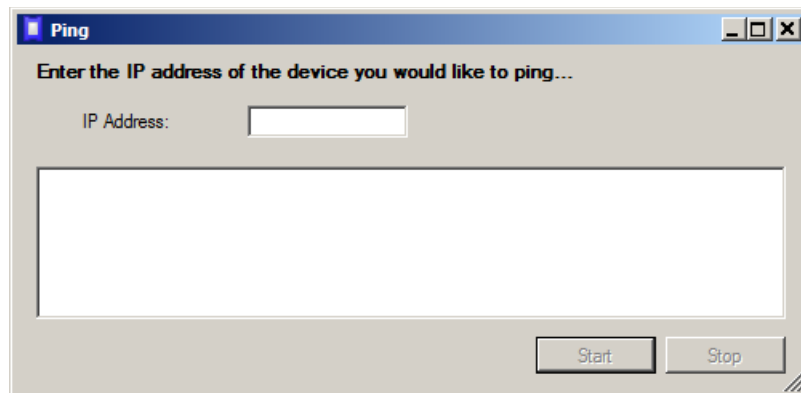


Figure 3.23 Ping Dialog Box

- 3 Enter the IP address of the device you want to locate (e.g., 192.168.123.107).
- 4 Click **Start**.
The EDL3 Explorer searches for the device and, if found, displays the reply.
- 5 Click **Stop**.
- 6 Click the **Close** button on the dialog box.

Options

The Options feature provides the following features, which are presented as check boxes:

- Start EDL3 Explorer when Windows starts (pg. 50)
- Show New EDL3 Notification (pg. 51)

Start EDL3 Explorer when Windows Starts

You use this feature to manage when the EDL3 Explorer opens.

The default is to not open the EDL3 Explorer when Windows starts.

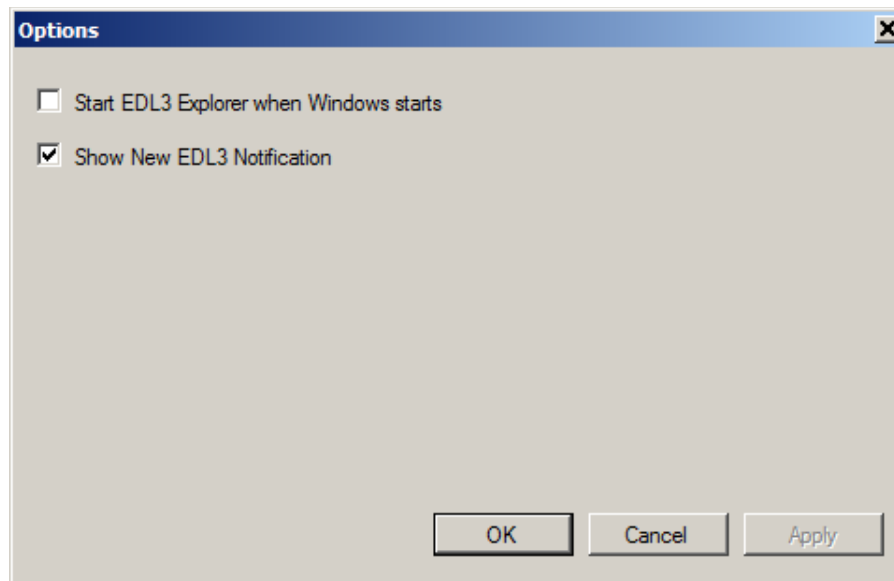


Figure 3.24 Options Menu

To change the default, click on the check box to add the check mark. Then click **OK**.

Show New EDL3 Notification

You use this feature to manage when to display the New INLINE7 notification message box.

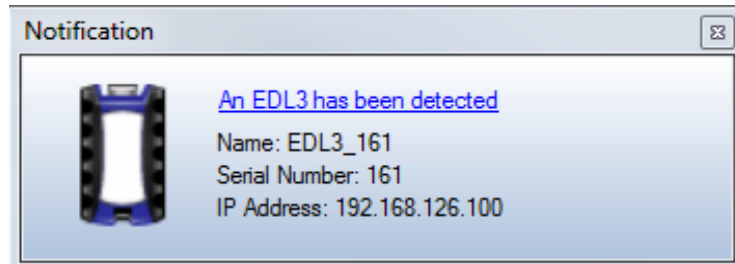


Figure 3.25 Notification Box

The default is to display the notification message box whenever a new EDL3 is detected.

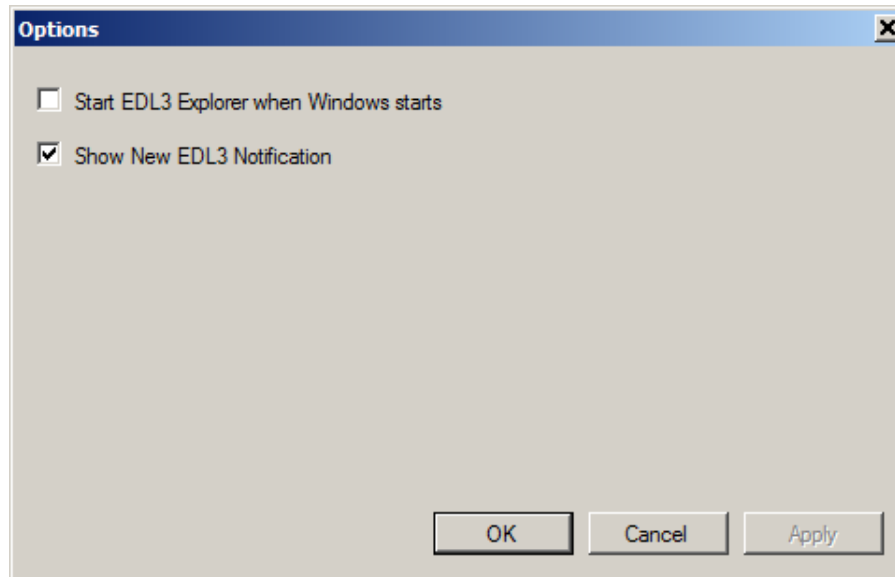


Figure 3.26 Options Menu

To change the default, click the box to remove the check mark. Then click **OK**.

The Help Menu

The Help menu has one feature, About. You use the About feature to display information about the EDL3 Explorer.

To access the Help menu:

- 1 Select **Help** from the EDL3 Explorer menu bar.
- 2 Select **About**.

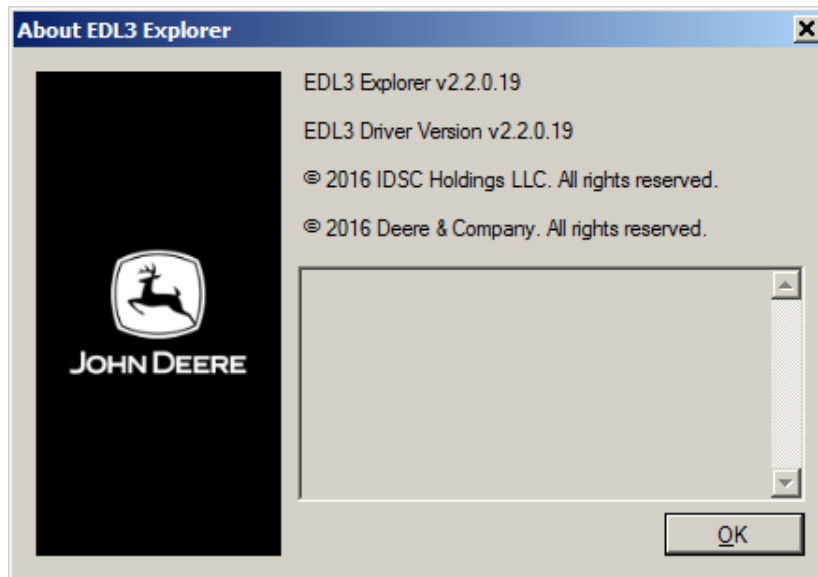


Figure 3.27 About EDL3 Explorer

- 3 When you have finished reviewing the information, click **OK** to close the dialog box.