

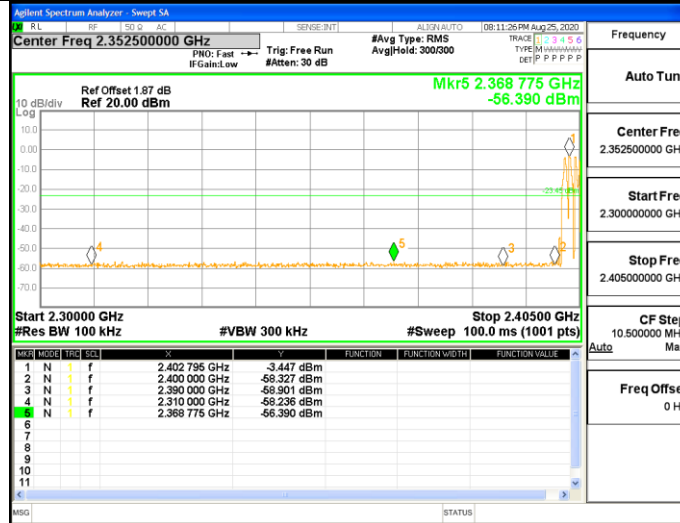
**10.6 APPENDIX G: BAND EDGE MEASUREMENTS**
**Test Result**

TestMode	Antenna	ChName	Channel	RefLevel [dBm]	Result [dBm]	Limit [dBm]	Verdict
DH1	Ant1	Low	2402	-2.93	-56.12	<=-22.93	PASS
		High	2480	-3.40	-55.34	<=-23.4	PASS
		Low	Hop_2402	-3.45	-56.39	-23.45	PASS
		High	Hop_2480	-4.01	-55.36	-24.02	PASS
2DH1	Ant1	Low	2402	-3.03	-55.85	<=-23.03	PASS
		High	2480	-3.47	-55.55	<=-23.47	PASS
		Low	Hop_2402	-3.63	-56.28	-23.63	PASS
		High	Hop_2480	-3.24	-55.51	-23.24	PASS
3DH1	Ant1	Low	2402	-3.05	-53.94	<=-23.05	PASS
		High	2480	-3.52	-55.85	<=-23.52	PASS
		Low	Hop_2402	-3.87	-55.61	-23.87	PASS
		High	Hop_2480	-3.65	-55.68	-23.65	PASS

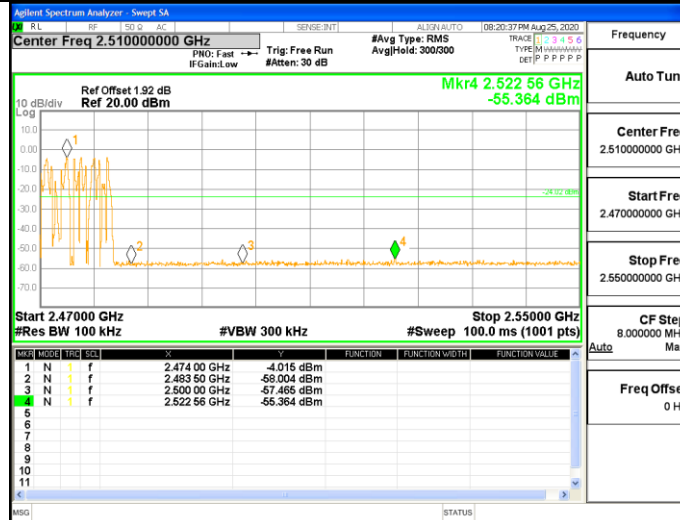
### Test Graphs



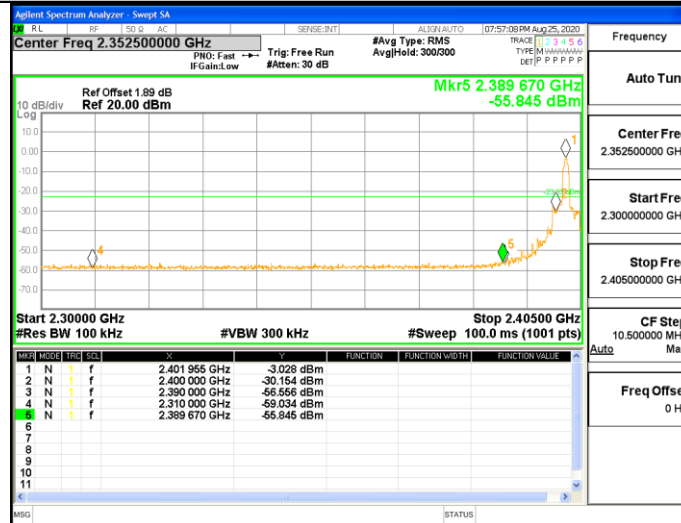
DH1\_Ant1\_Low\_Hop\_2402



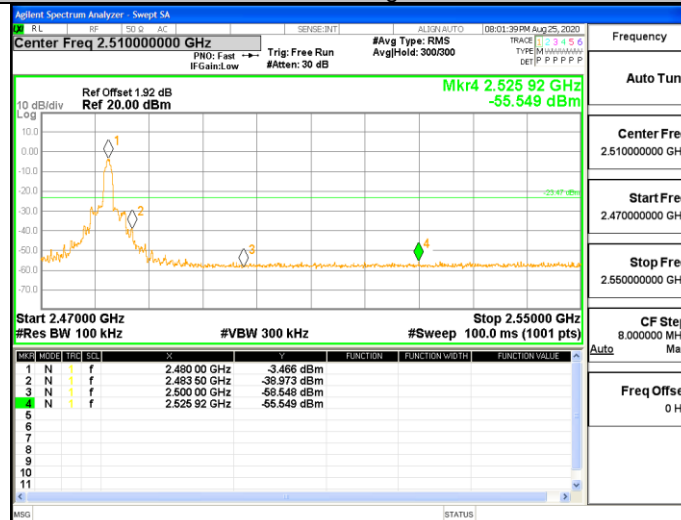
DH1\_Ant1\_High\_Hop\_2480

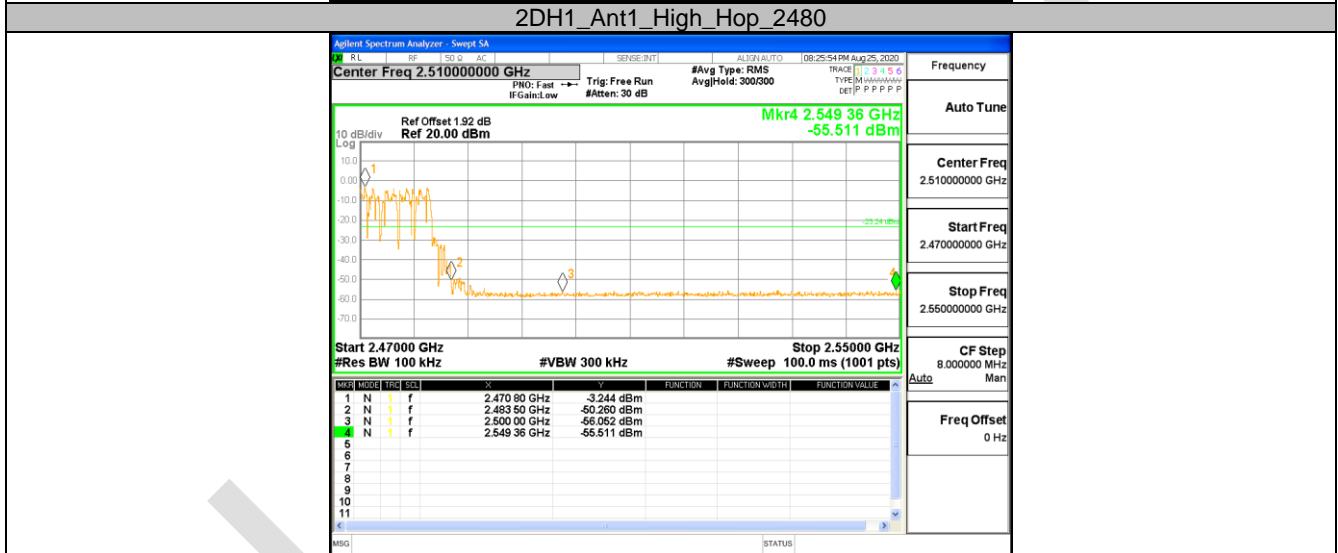
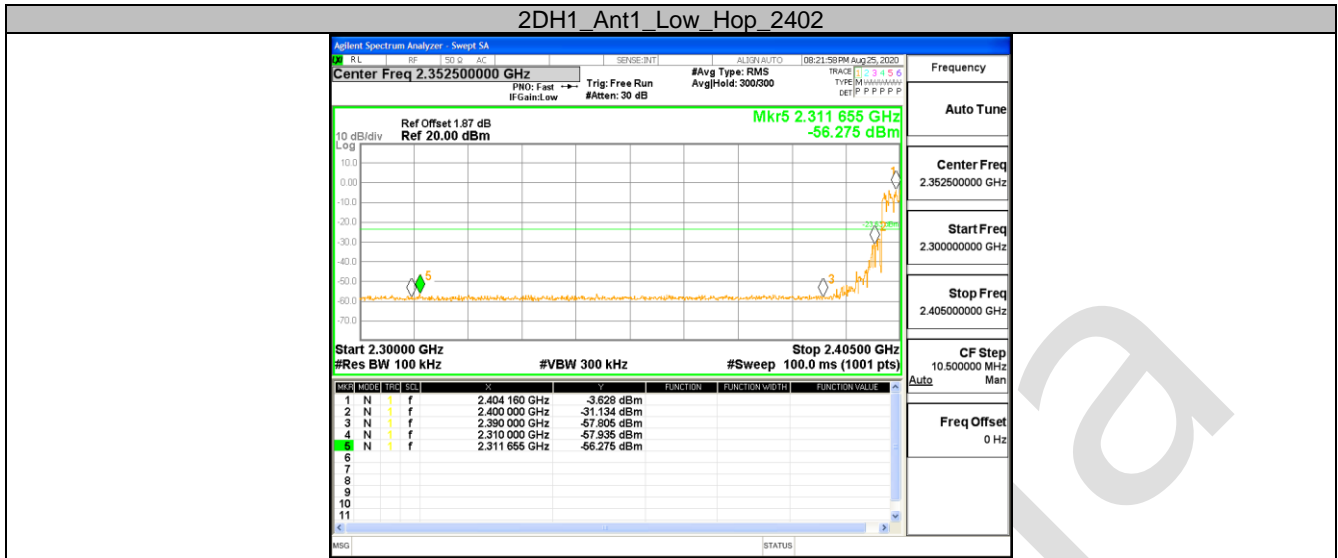


2DH1\_Ant1\_Low\_2402

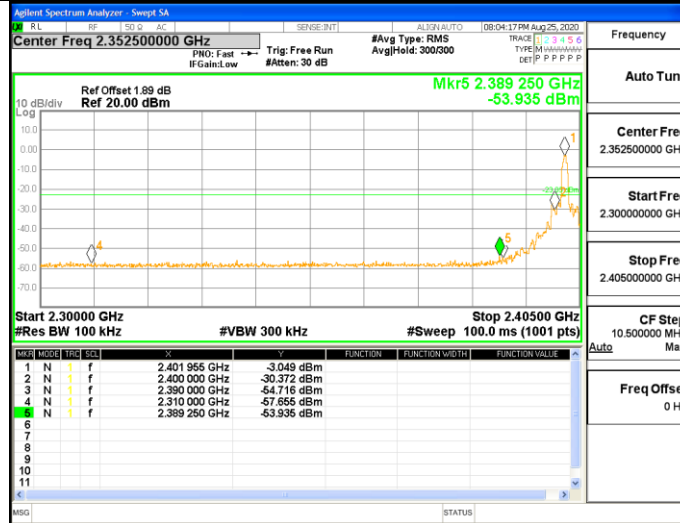


2DH1\_Ant1\_High\_2480

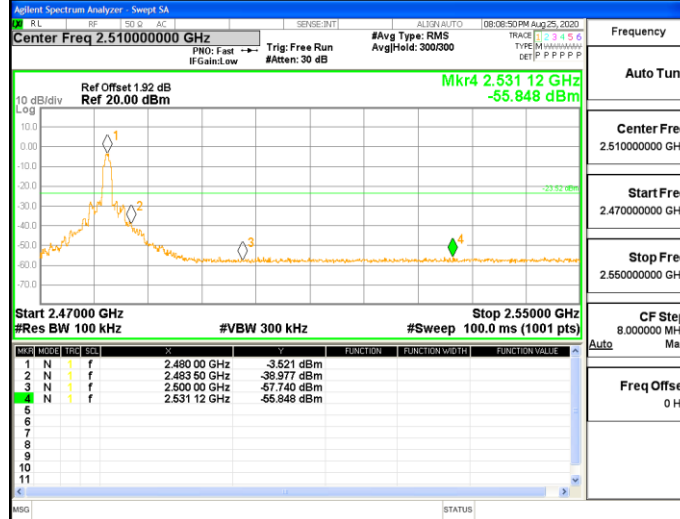


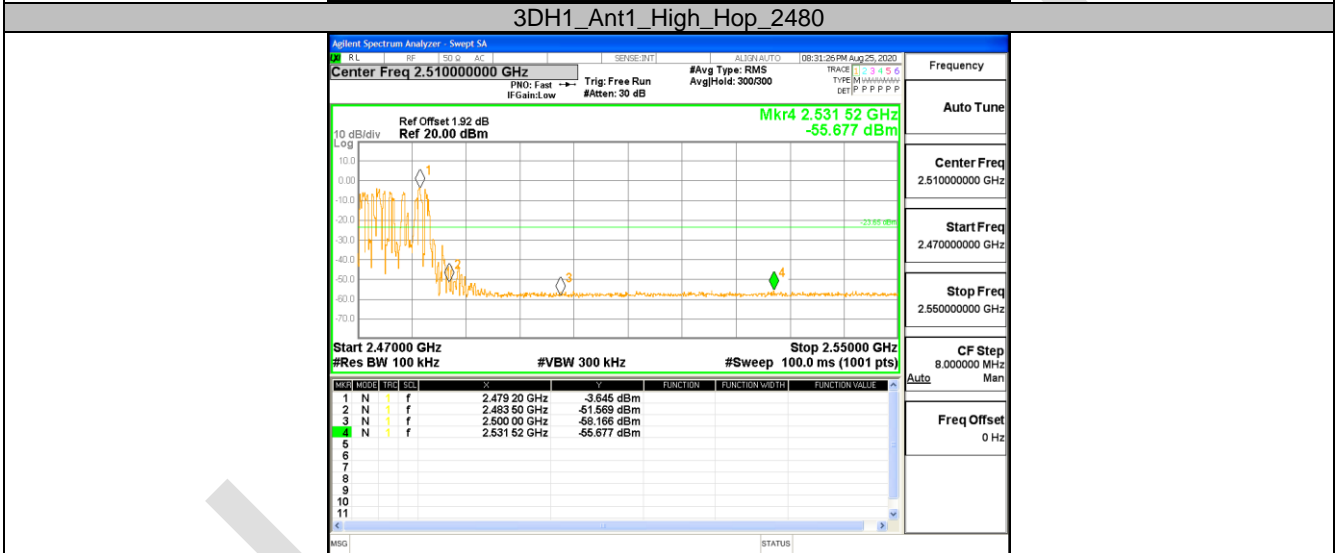
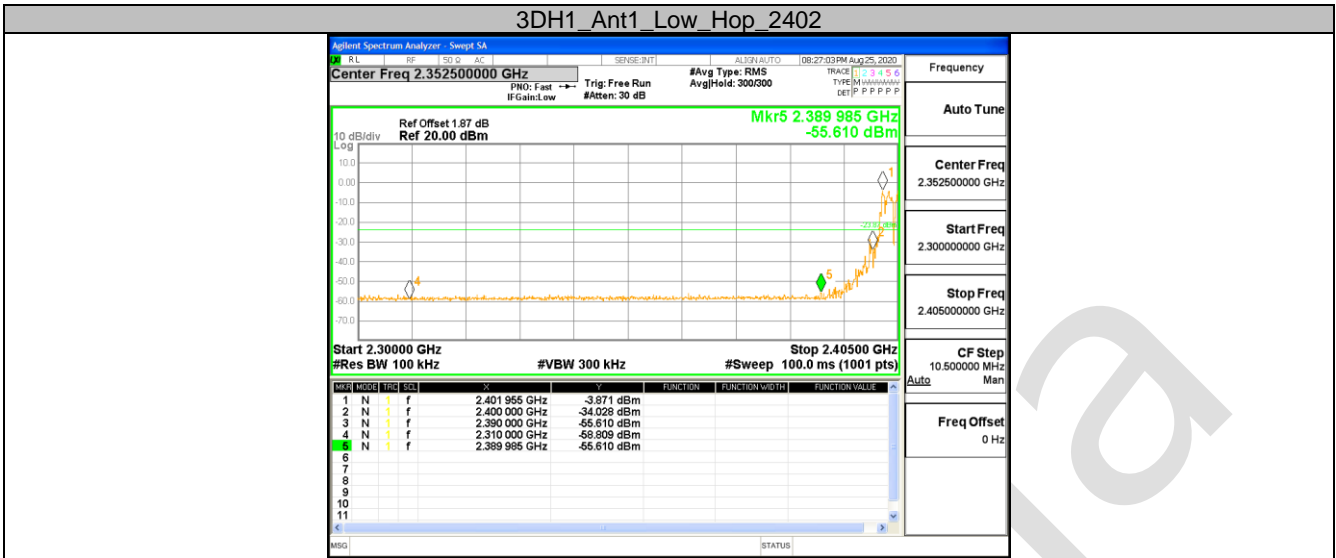


3DH1\_Ant1\_Low\_2402



3DH1\_Ant1\_High\_2480





**10.7 APPENDIXH: CONDUCTED SPURIOUS EMISSION**
**Test Result**

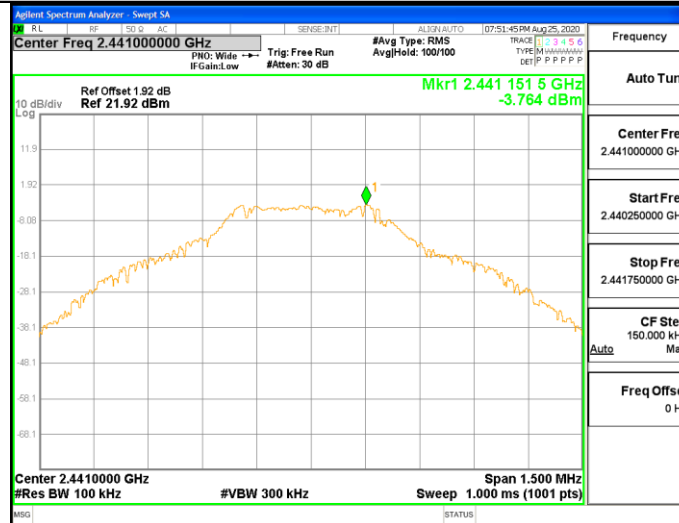
TestMode	Antenna	Channel	FreqRange [MHz]	RefLevel [dBm]	Result [dBm]	Limit [dBm]	Verdict
DH1	Ant1	2402	Reference	-2.95	-2.95	---	PASS
			30~1000	30~1000	-53.629	<=-22.945	PASS
			1000~26500	1000~26500	-35.809	<=-22.945	PASS
		2441	Reference	-3.76	-3.76	---	PASS
			30~1000	30~1000	-53.577	<=-23.764	PASS
			1000~26500	1000~26500	-33.366	<=-23.764	PASS
		2480	Reference	-4.21	-4.21	---	PASS
			30~1000	30~1000	-54.136	<=-24.212	PASS
			1000~26500	1000~26500	-49.29	<=-24.212	PASS
2DH1	Ant1	2402	Reference	-3.70	-3.70	---	PASS
			30~1000	30~1000	-53.812	<=-23.696	PASS
			1000~26500	1000~26500	-34.46	<=-23.696	PASS
		2441	Reference	-4.32	-4.32	---	PASS
			30~1000	30~1000	-53.486	<=-24.319	PASS
			1000~26500	1000~26500	-33.316	<=-24.319	PASS
		2480	Reference	-3.47	-3.47	---	PASS
			30~1000	30~1000	-53.85	<=-23.474	PASS
			1000~26500	1000~26500	-32.986	<=-23.474	PASS
3DH1	Ant1	2402	Reference	-3.03	-3.03	---	PASS
			30~1000	30~1000	-53.52	<=-23.032	PASS
			1000~26500	1000~26500	-36.897	<=-23.032	PASS
		2441	Reference	-4.49	-4.49	---	PASS
			30~1000	30~1000	-54.149	<=-24.493	PASS
			1000~26500	1000~26500	-36.649	<=-24.493	PASS
		2480	Reference	-3.50	-3.50	---	PASS
			30~1000	30~1000	-54.562	<=-23.496	PASS
			1000~26500	1000~26500	-35.074	<=-23.496	PASS



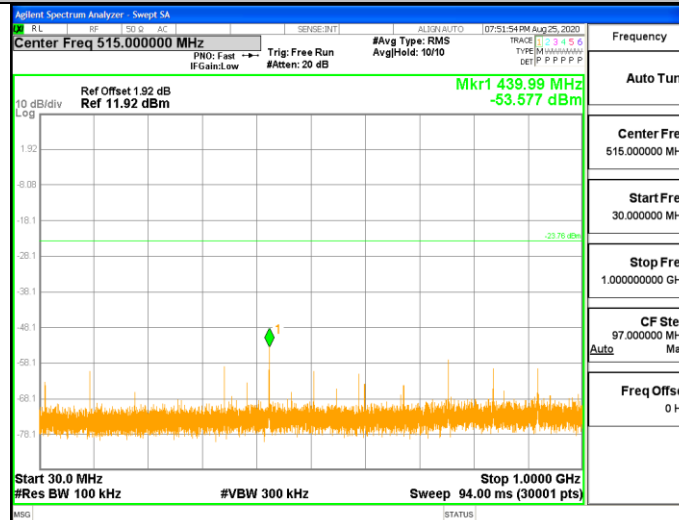
### Test Graphs



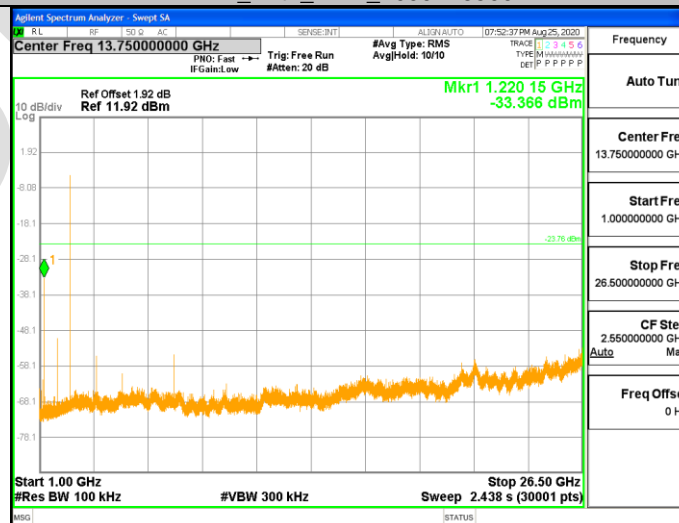
DH1\_Ant1\_2441\_0~Reference



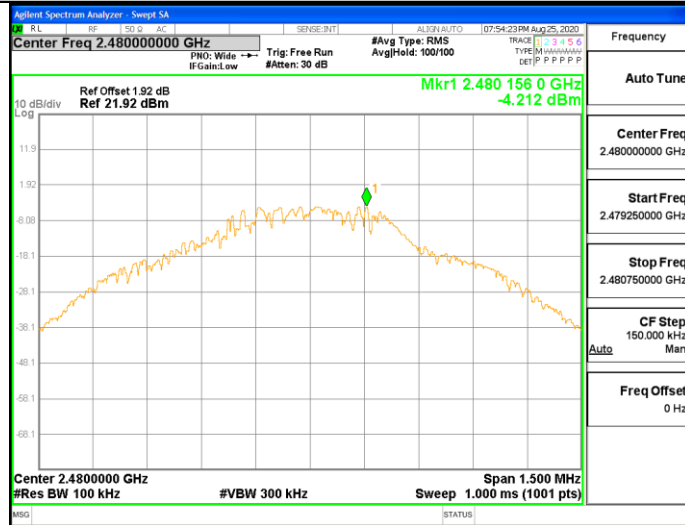
DH1\_Ant1\_2441\_30~1000



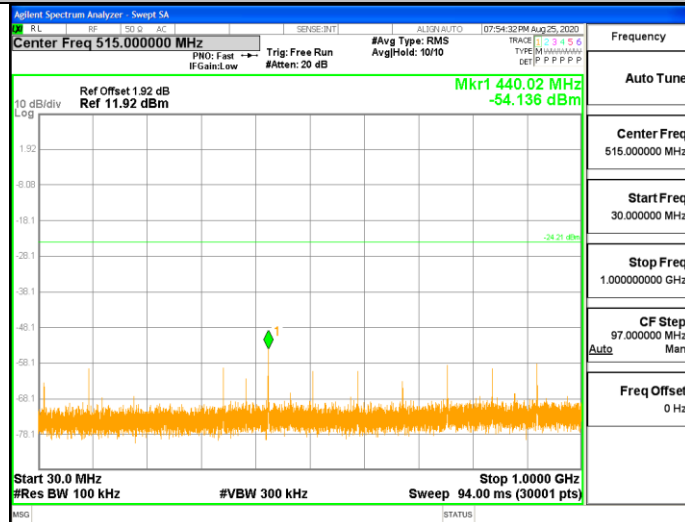
DH1\_Ant1\_2441\_1000~26500



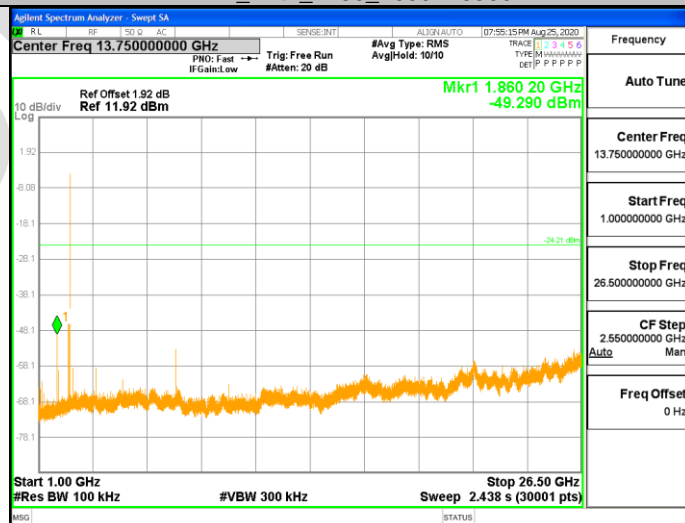
DH1\_Ant1\_2480\_0~Reference



DH1\_Ant1\_2480\_30~1000



DH1\_Ant1\_2480\_1000~26500

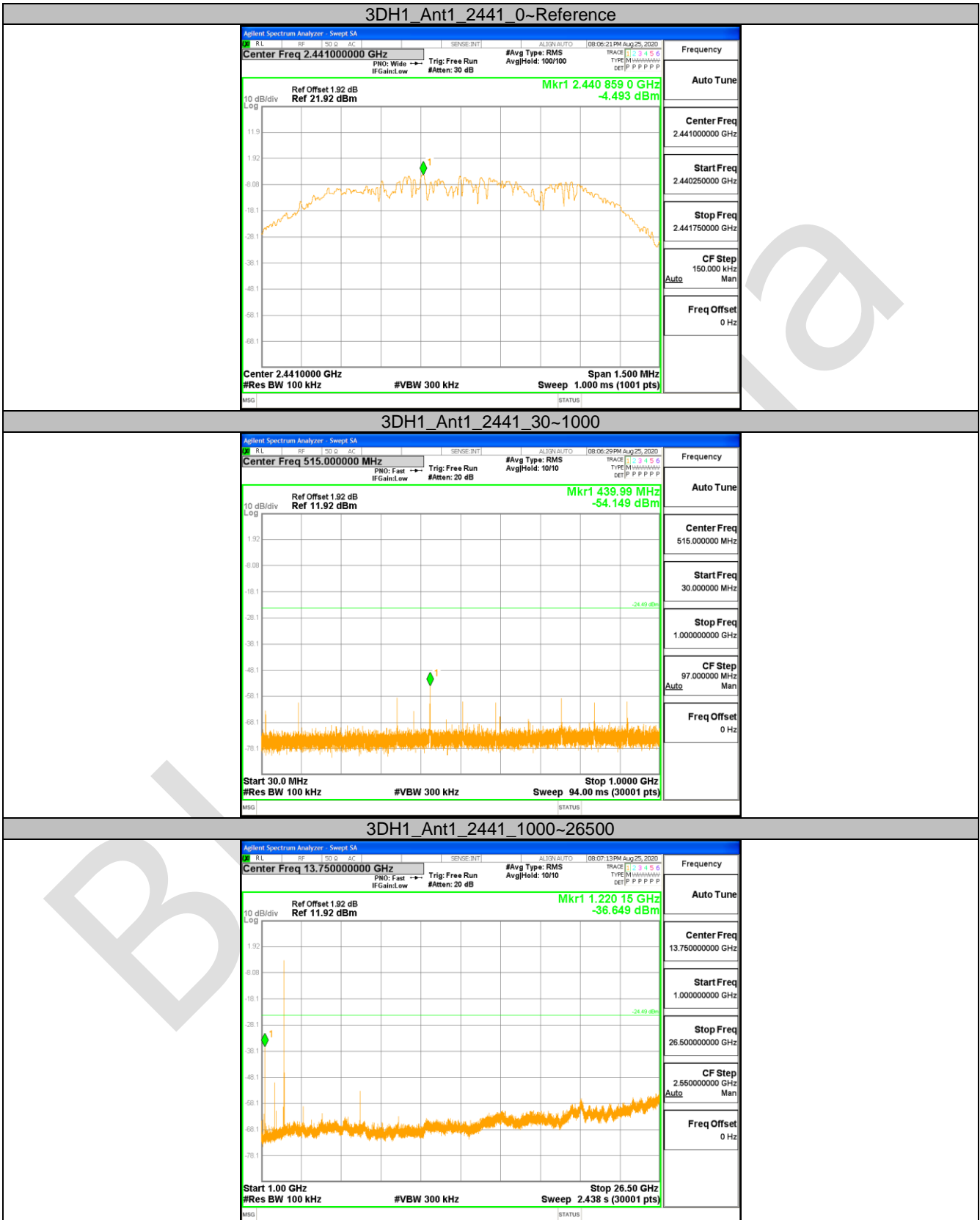










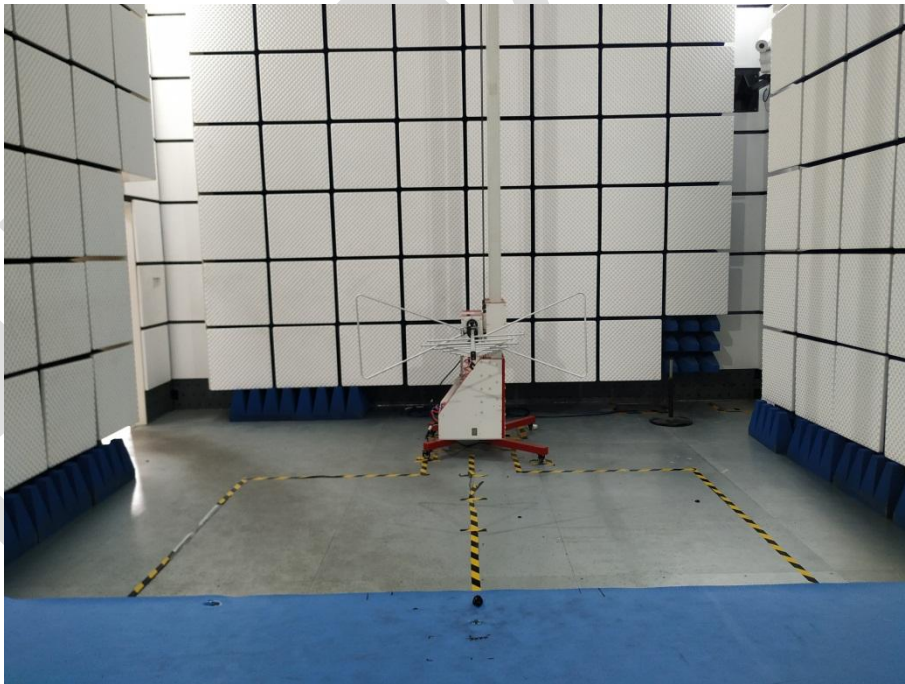
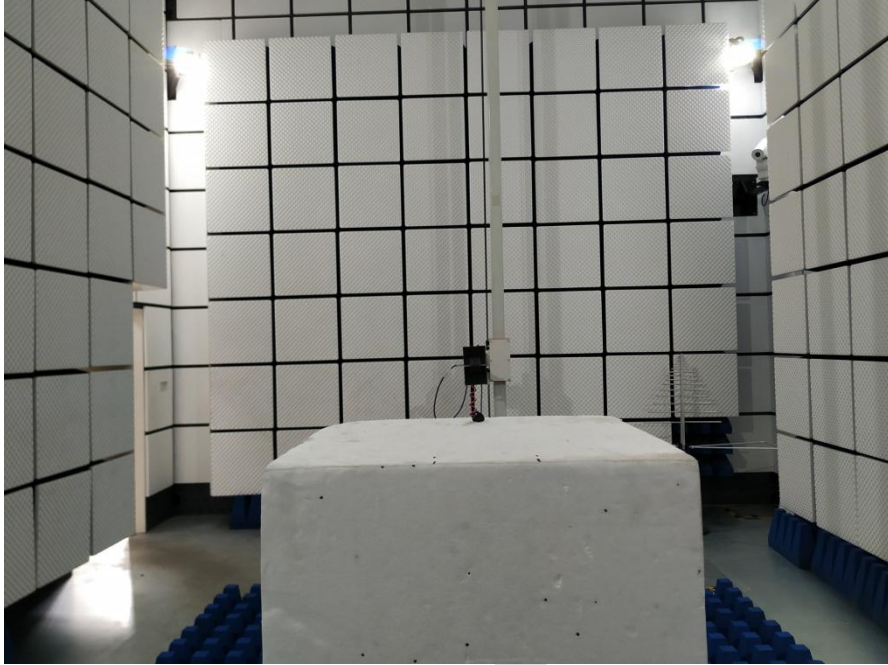


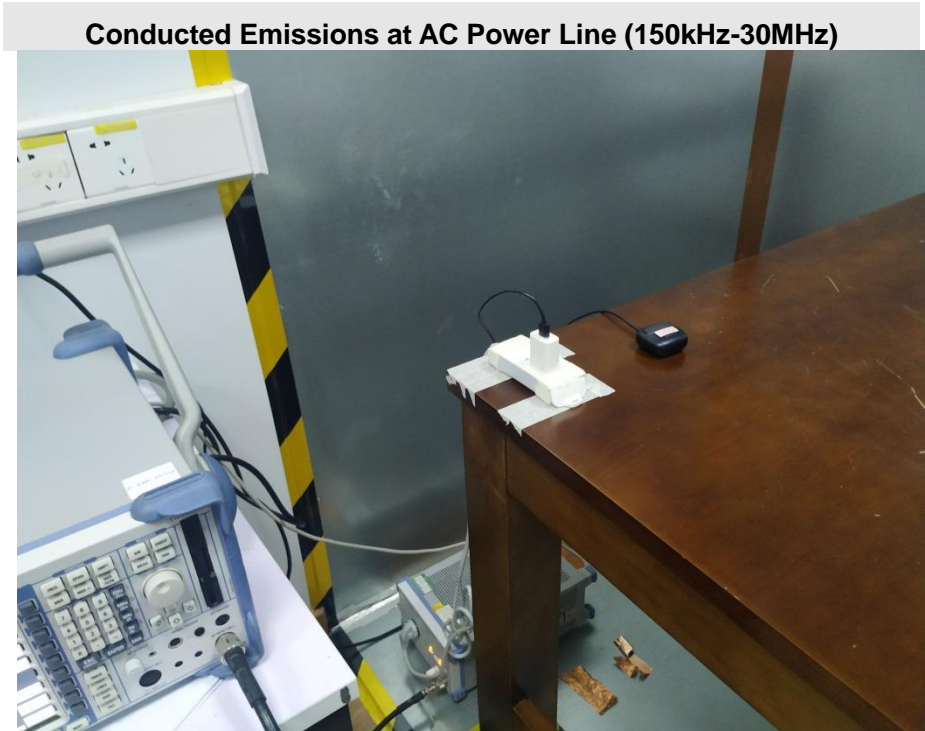




## APPENDIX A: PHOTOGRAPHS OF TEST SETUP

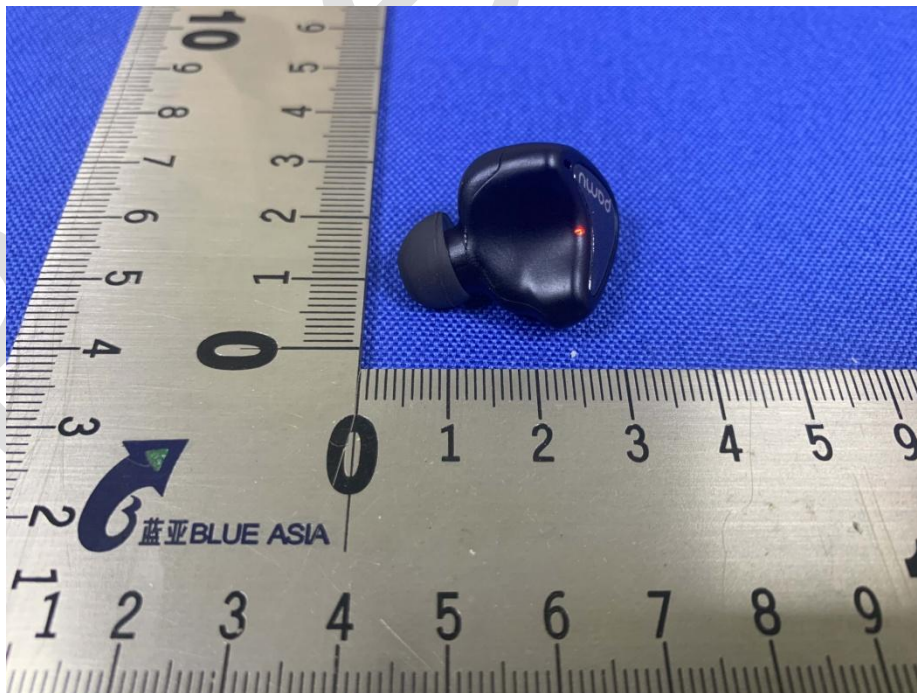
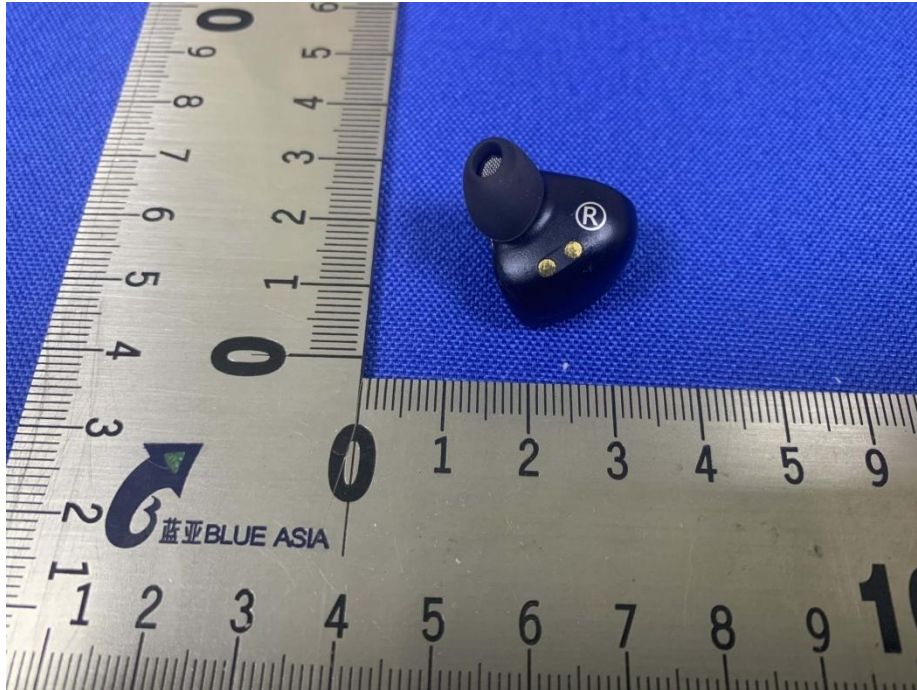
### Radiated Spurious Emissions

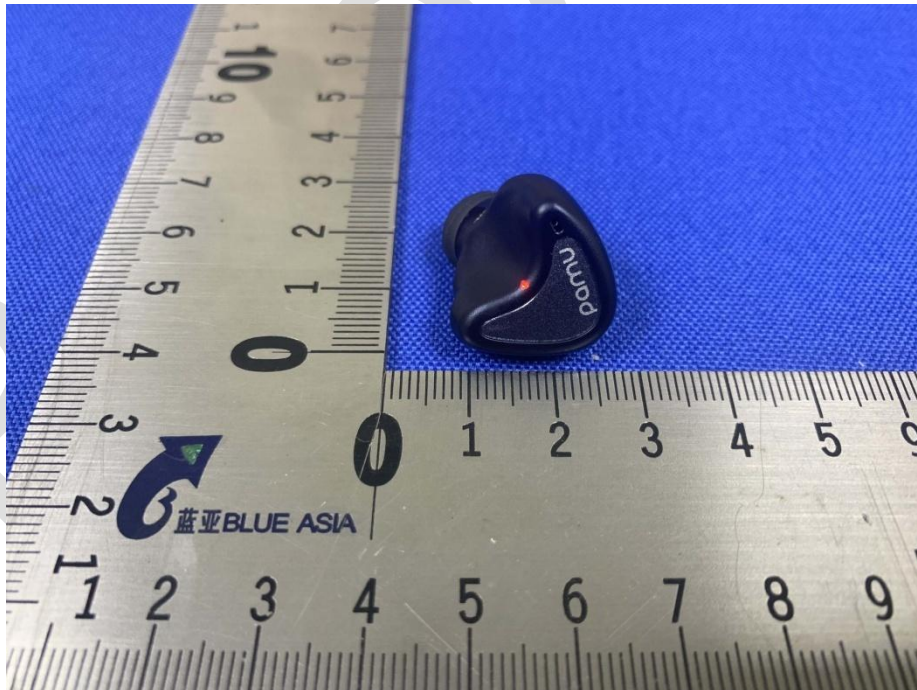
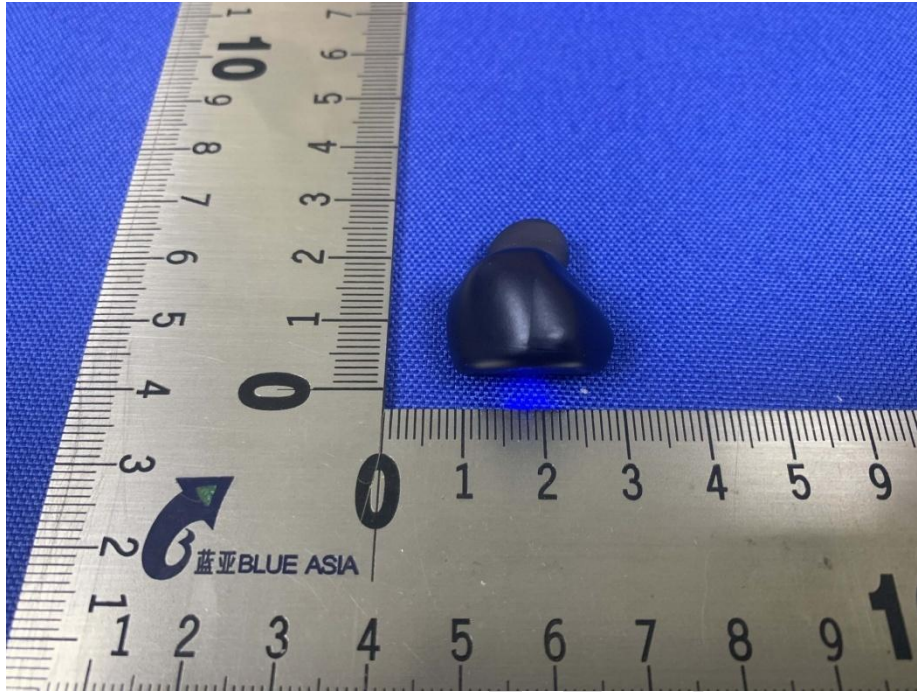


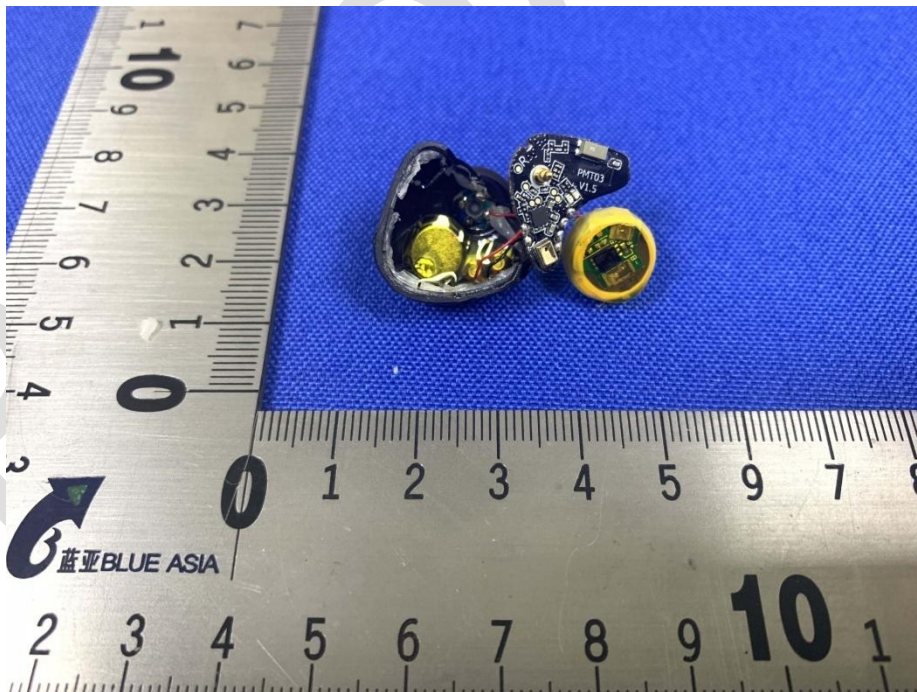
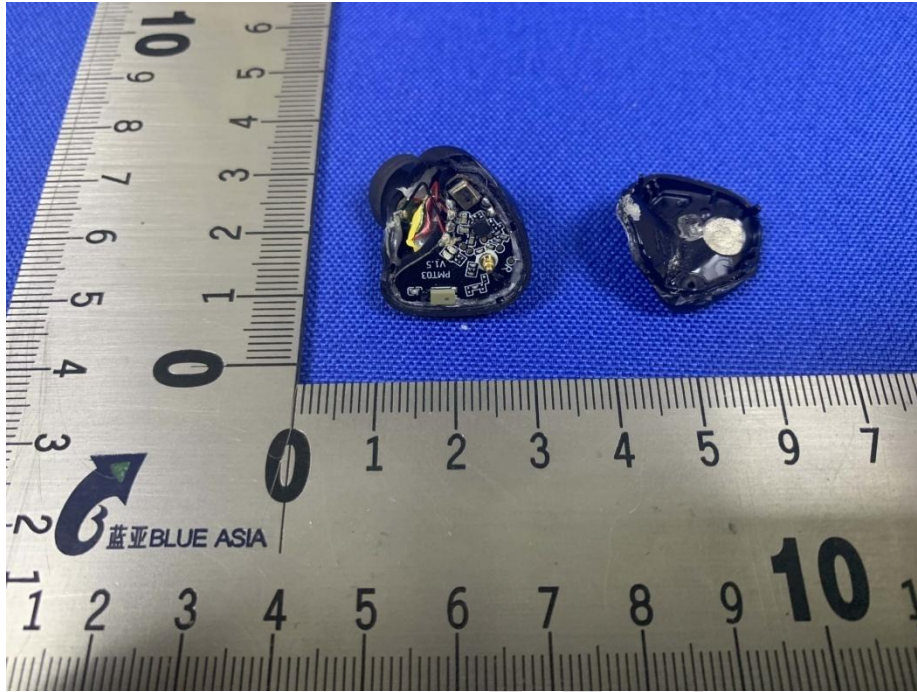


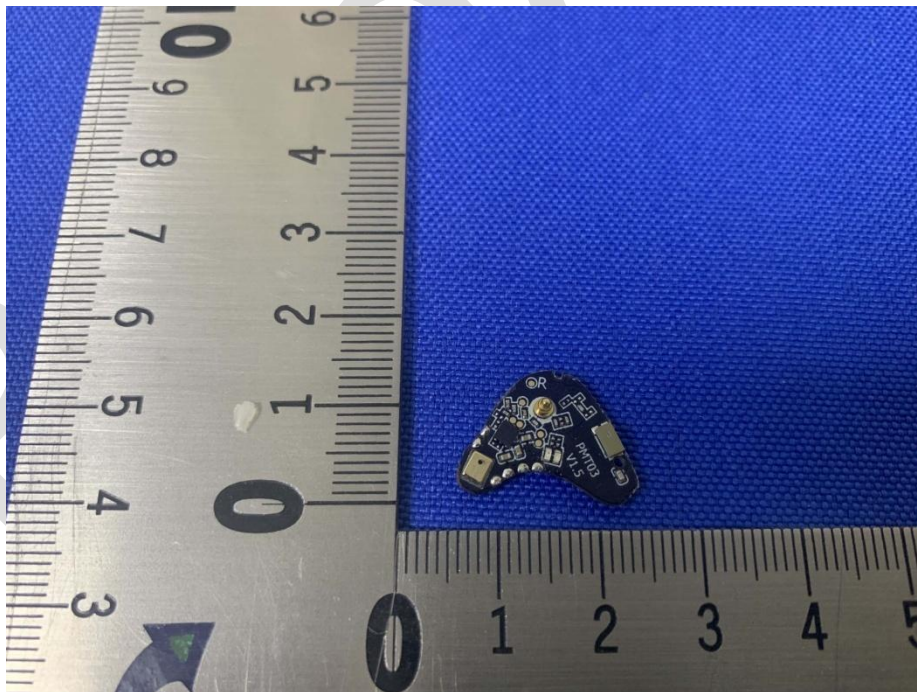
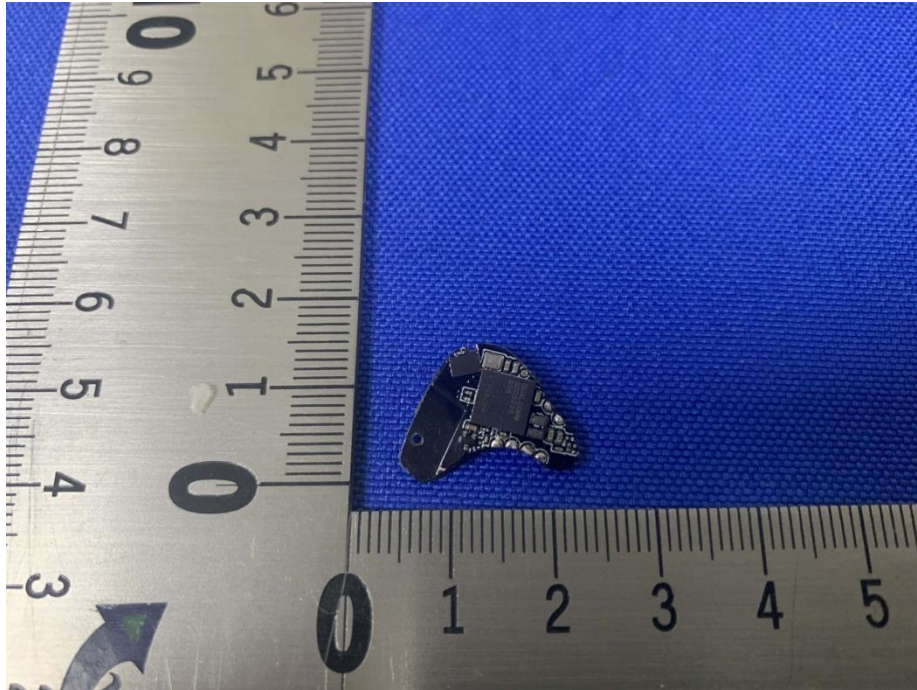
BlueAsia

### APPENDIX B: PHOTOGRAPHS OF EUT









**----END OF REPORT----**

The test report is effective only with both signature and specialized stamp, The result(s) shown in this report refer only to the sample(s) tested. Without written approval of BlueAsia, this report can't be reproduced except in full.

BlueAsia