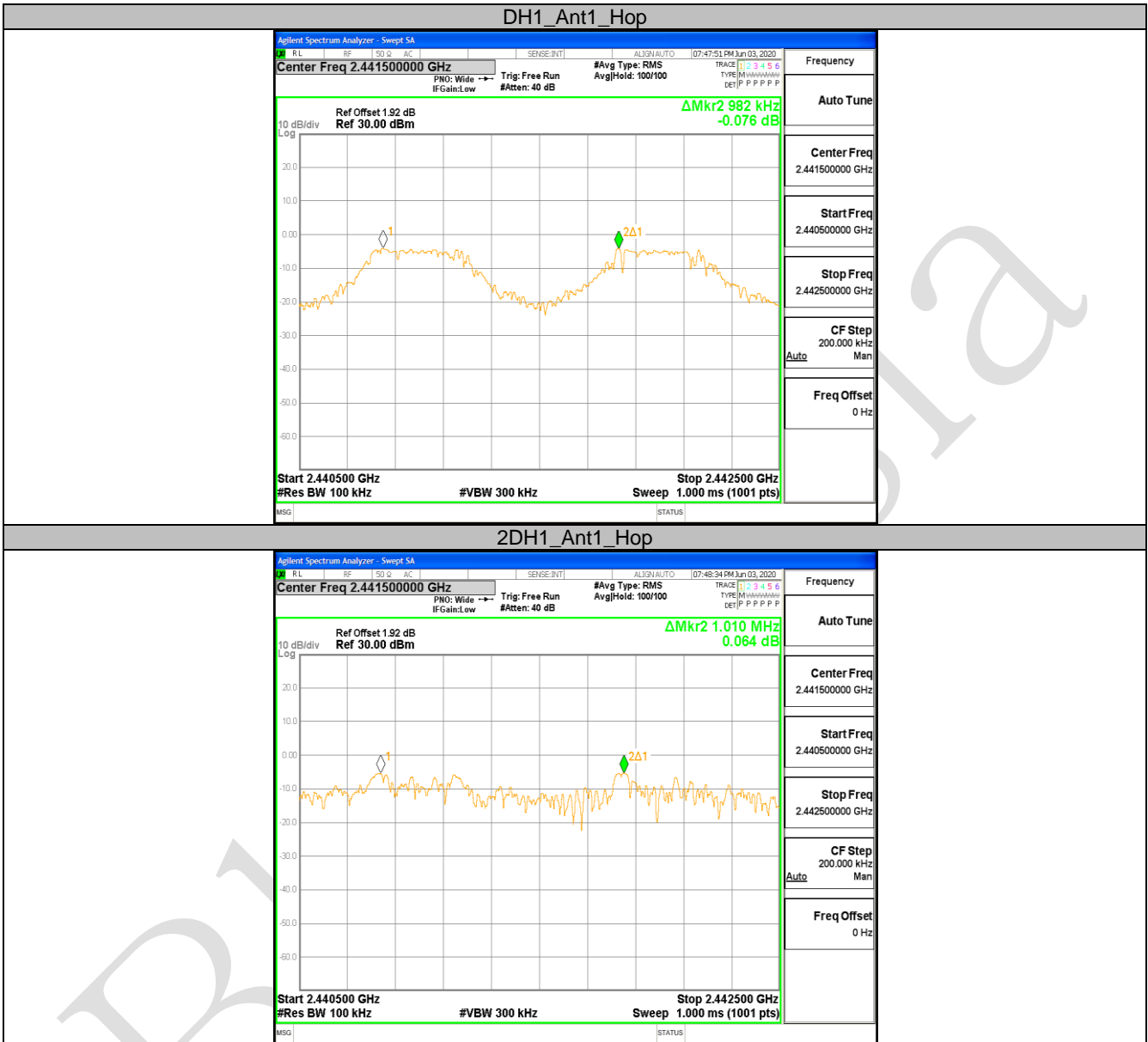


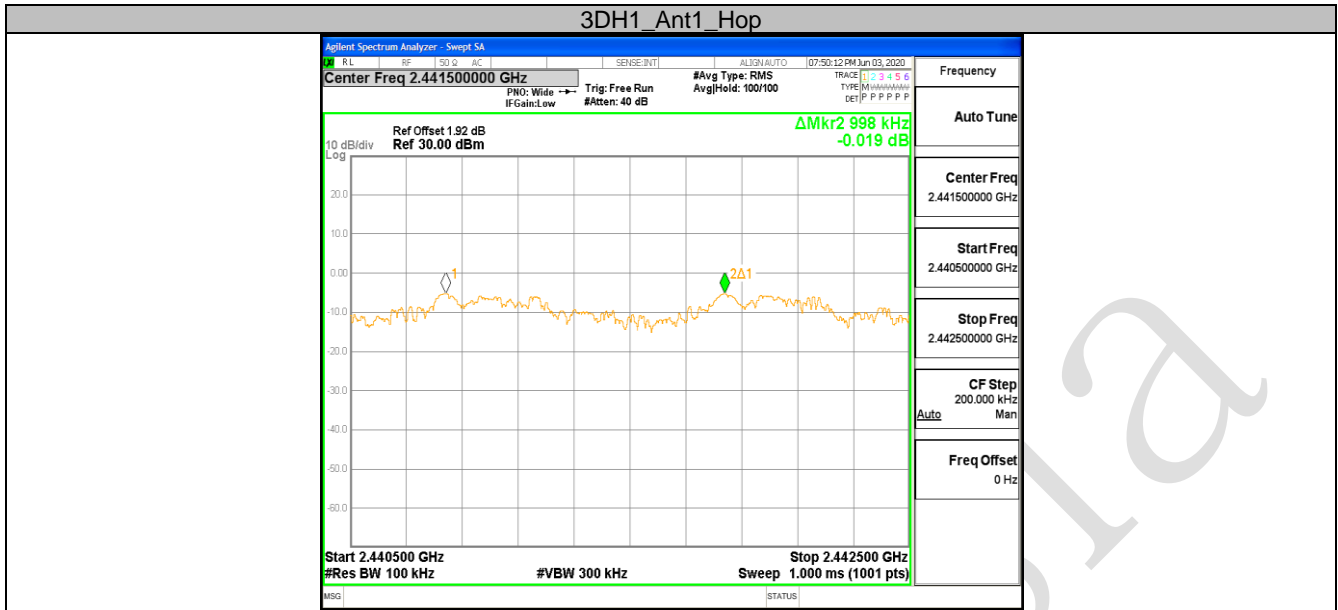
10.3 APPENDIX: CARRIER FREQUENCY SEPARATION

Test Result

TestMode	Antenna	Channel	Result[MHz]	Limit[MHz]	Verdict
DH1	Ant1	Hop	0.982	≥ 0.750	PASS
2DH1	Ant1	Hop	1.01	≥ 0.944	PASS
3DH1	Ant1	Hop	0.998	≥ 0.938	PASS

Test Graphs



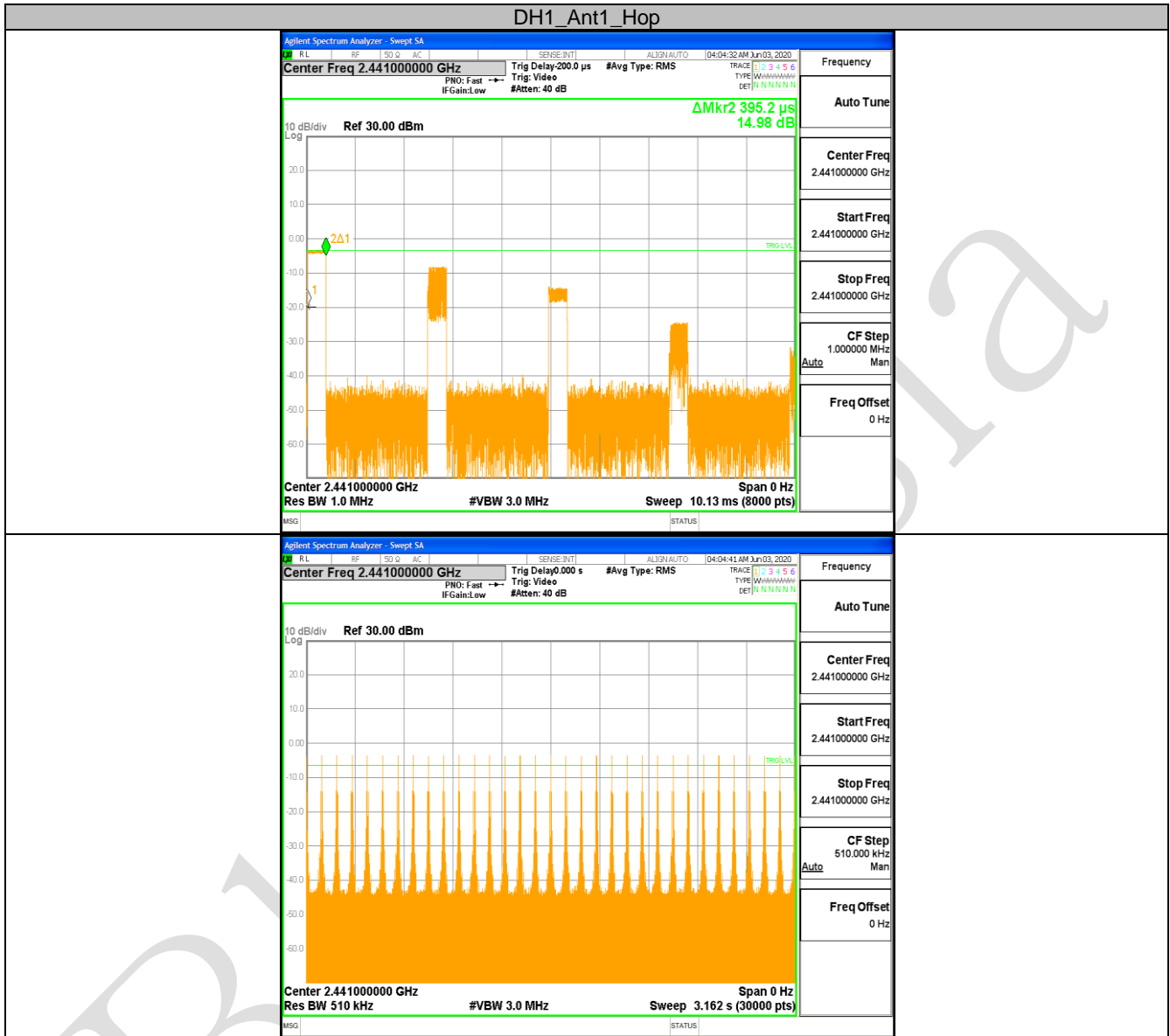


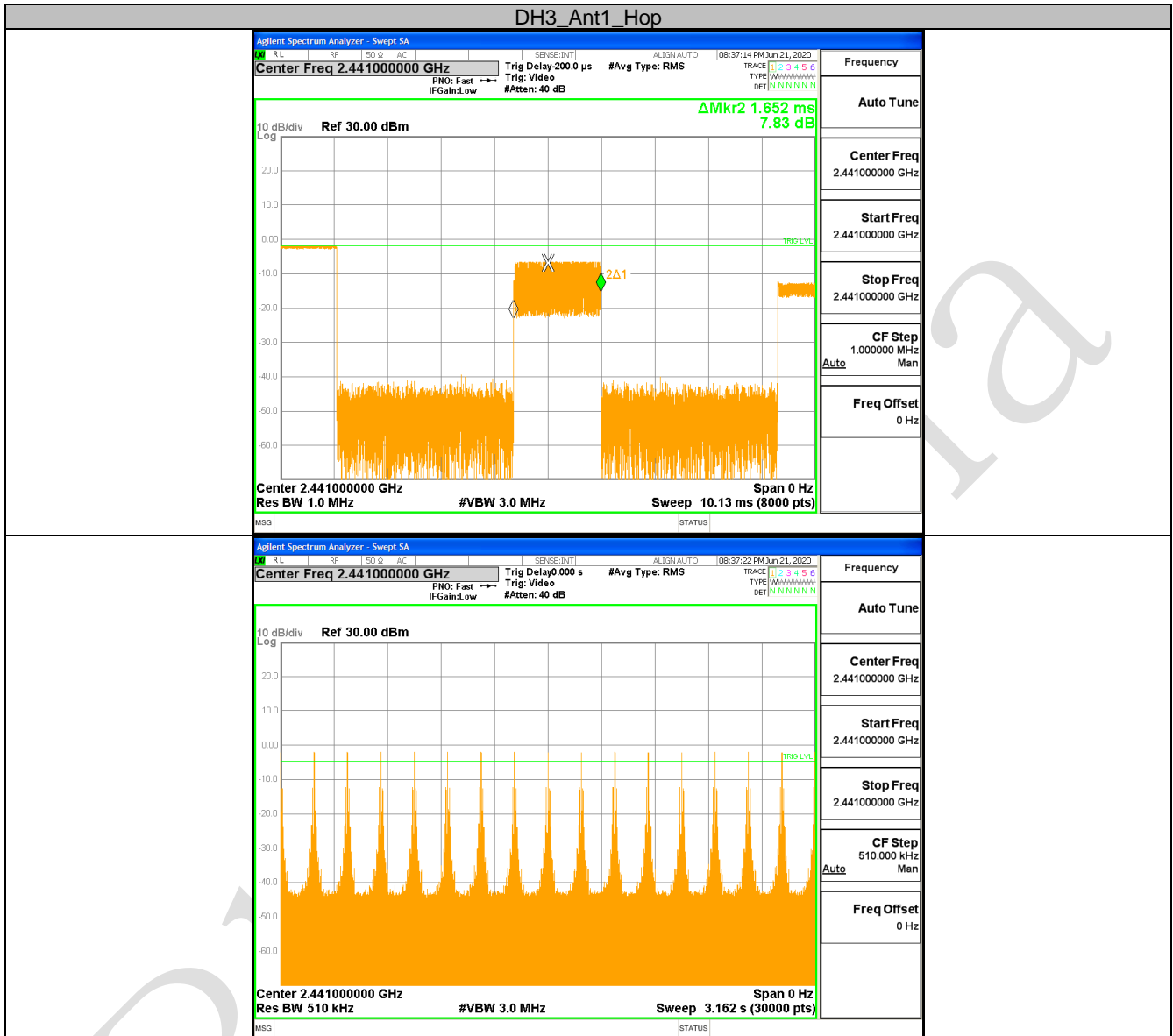
10.4 APPENDIX: TIME OF OCCUPANCY

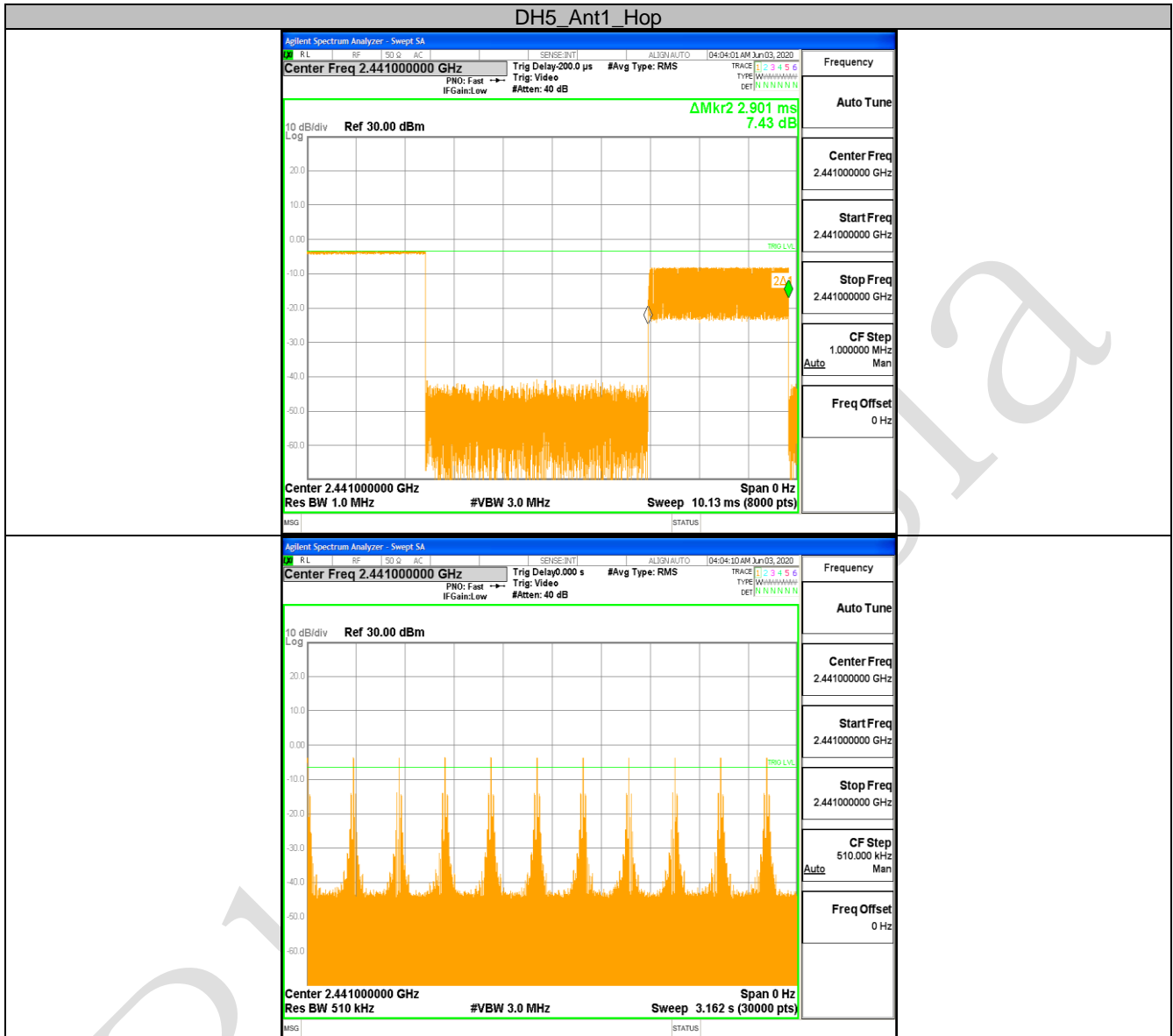
Test Result

TestMode	Antenna	Channel	BurstWidth [ms]	TotalHops [Num]	Result[s]	Limit[s]	Verdict
DH1	Ant1	Hop	0.40	330	0.13	<=0.4	PASS
DH3	Ant1	Hop	1.65	170	0.28	<=0.4	PASS
DH5	Ant1	Hop	2.90	110	0.319	<=0.4	PASS

Test Graphs







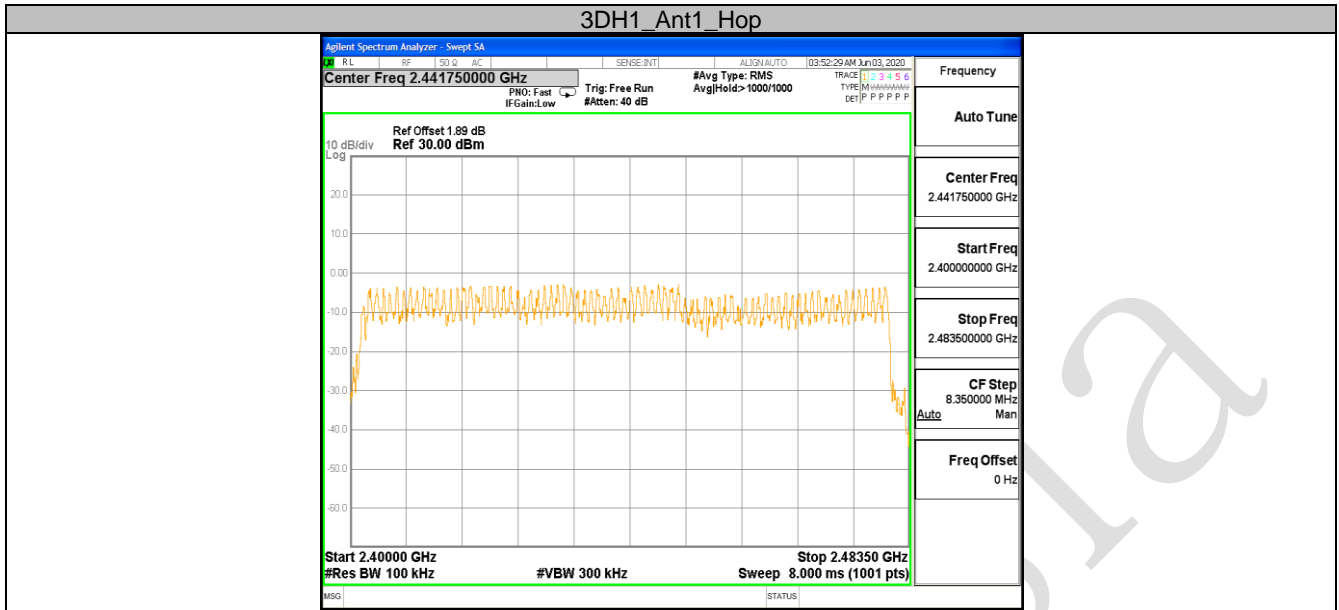
10.5 APPENDIX: NUMBER OF HOPPING CHANNELS**Test Result**

TestMode	Antenna	Channel	Result[Num]	Limit[Num]	Verdict
DH1	Ant1	Hop	79	≥ 15	PASS
2DH1	Ant1	Hop	79	≥ 15	PASS
3DH1	Ant1	Hop	79	≥ 15	PASS

BlueAsia

Test Graphs





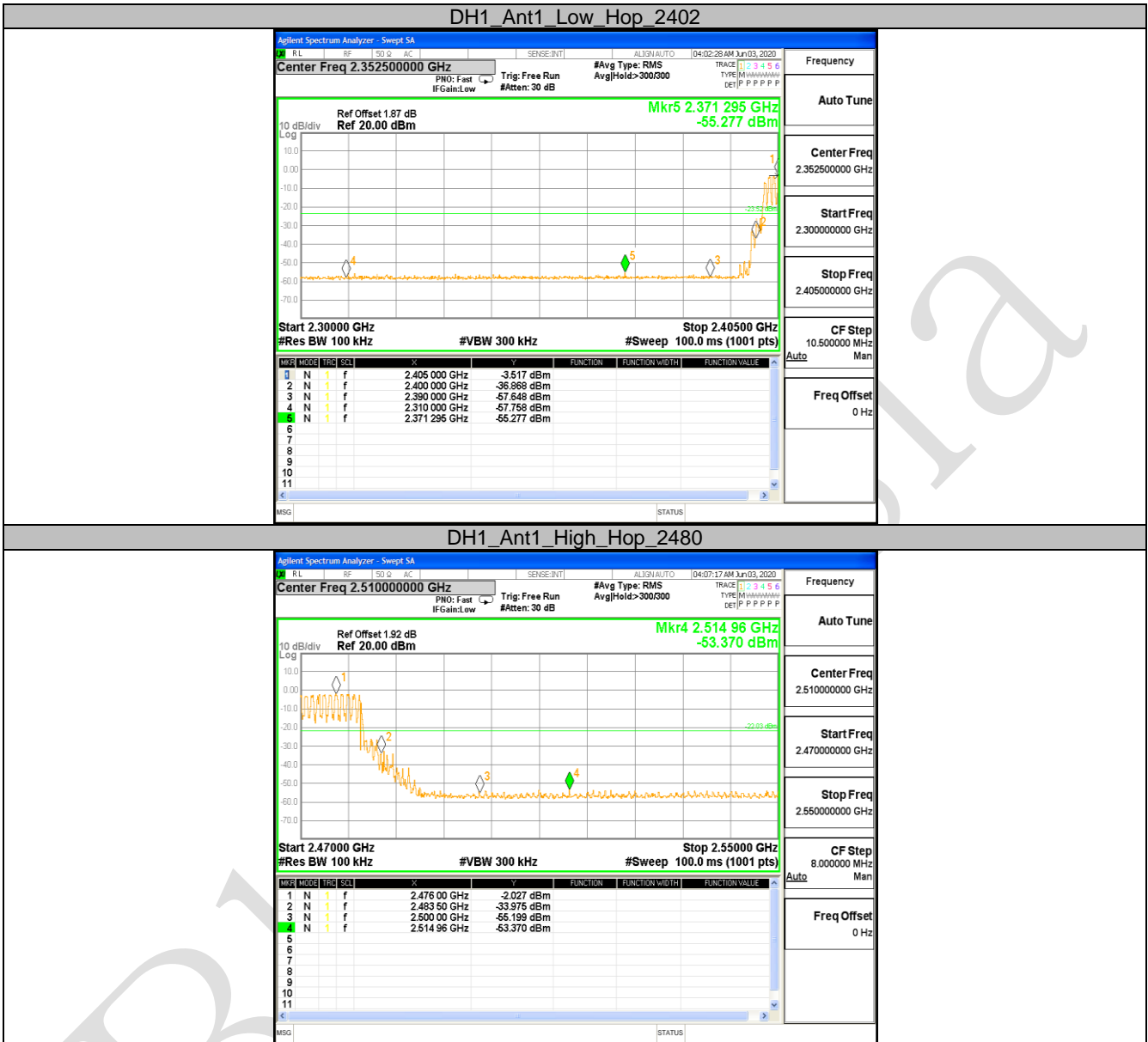
10.6 APPENDIX: BAND EDGE MEASUREMENTS

Test Result

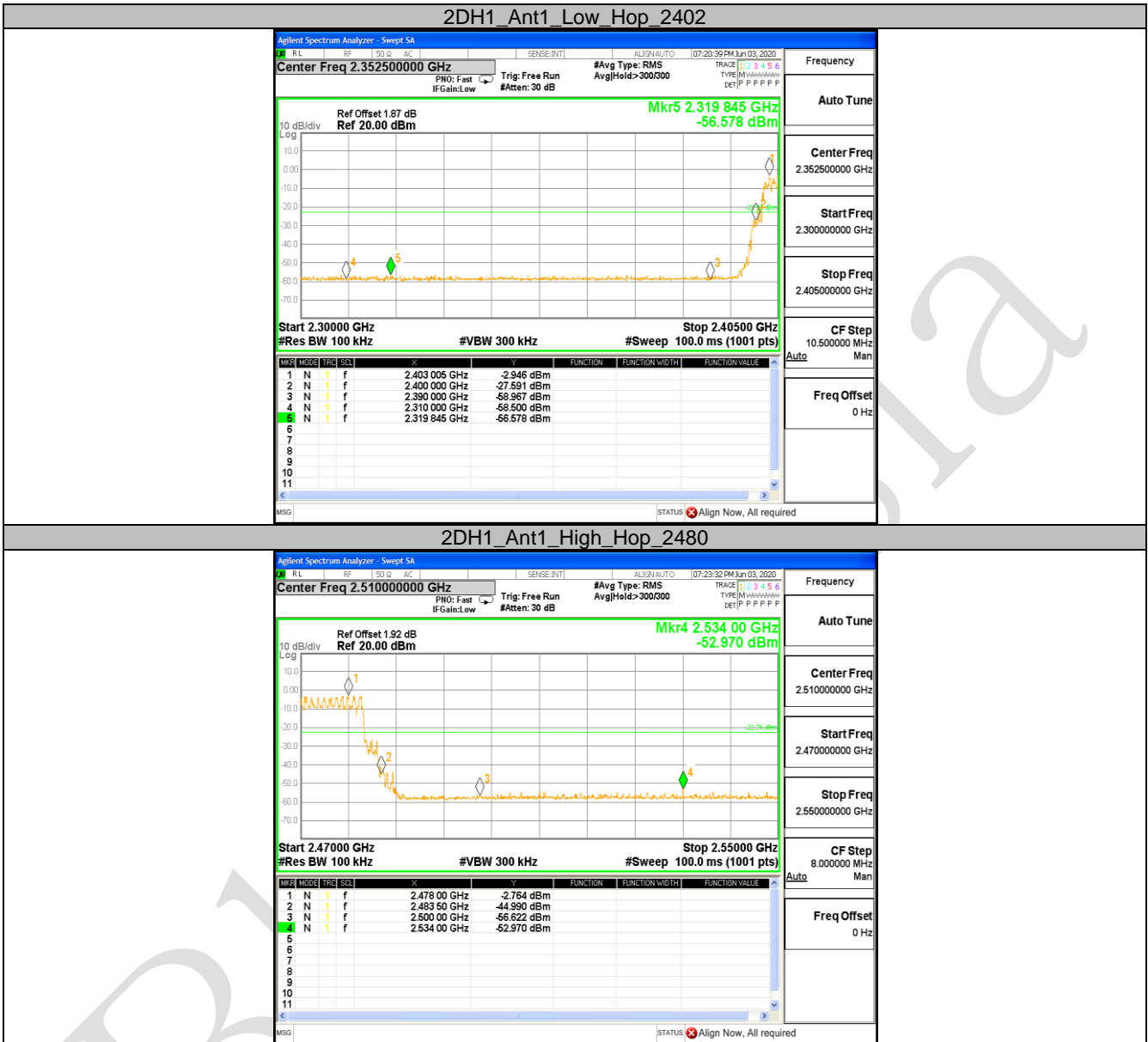
TestMode	Antenna	ChName	Channel	RefLevel [dBm]	Result [dBm]	Limit [dBm]	Verdict
DH1	Ant1	Low	2402	-6.55	-56.36	<=-26.55	PASS
		High	2480	-1.67	-55.11	<=-21.67	PASS
		Low	Hop_2402	-3.52	-55.28	-23.52	PASS
		High	Hop_2480	-2.03	-53.37	-22.03	PASS
2DH1	Ant1	Low	2402	-6.75	-56.24	<=-26.75	PASS
		High	2480	-3.64	-55.34	<=-23.64	PASS
		Low	Hop_2402	-2.95	-56.58	-22.95	PASS
		High	Hop_2480	-2.76	-52.97	-22.76	PASS
3DH1	Ant1	Low	2402	-6.71	-56.26	<=-26.71	PASS
		High	2480	-3.63	-55.71	<=-23.63	PASS
		Low	Hop_2402	-2.09	-56.04	-22.09	PASS
		High	Hop_2480	-3.92	-53.47	-23.92	PASS

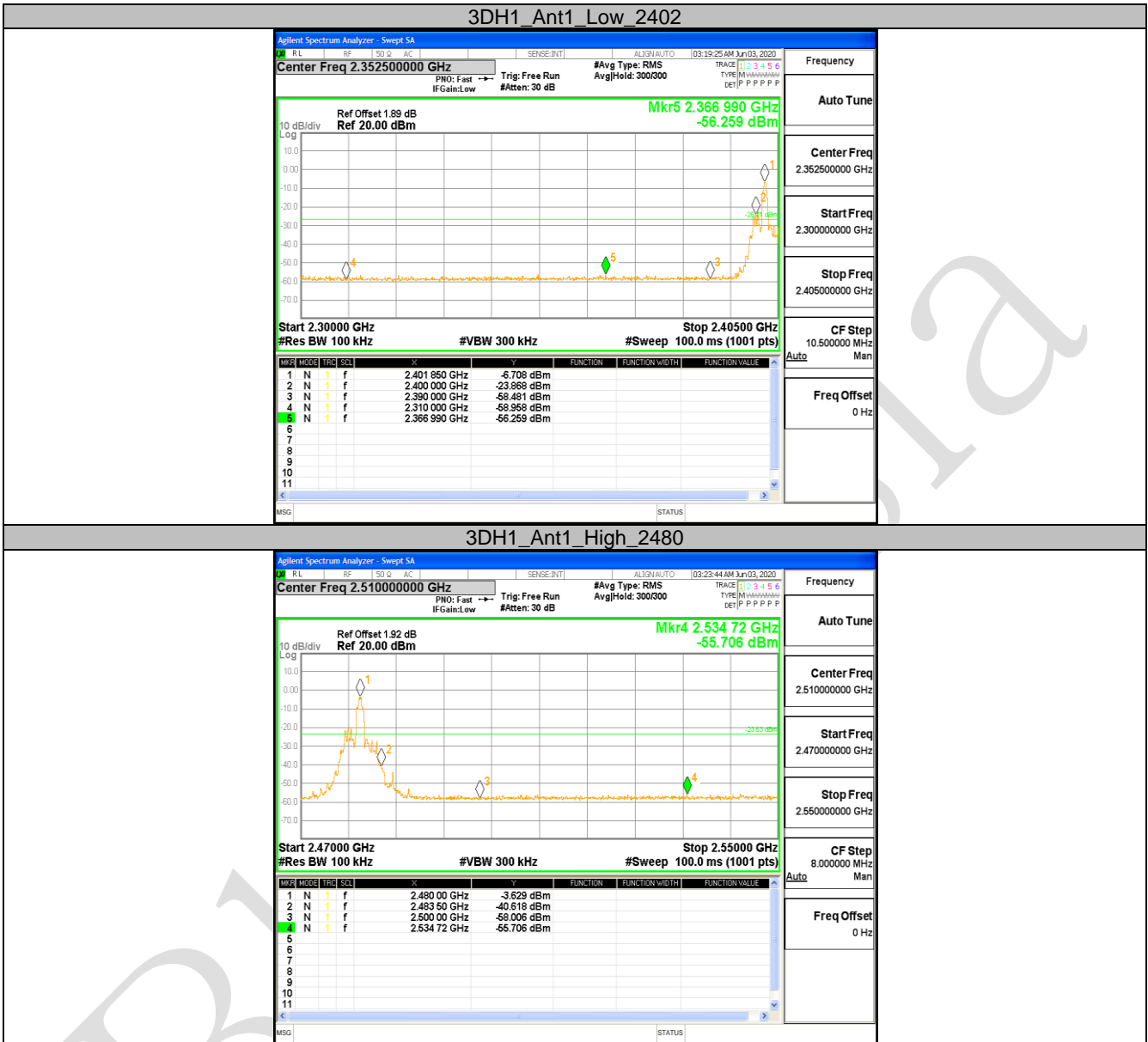
Test Graphs

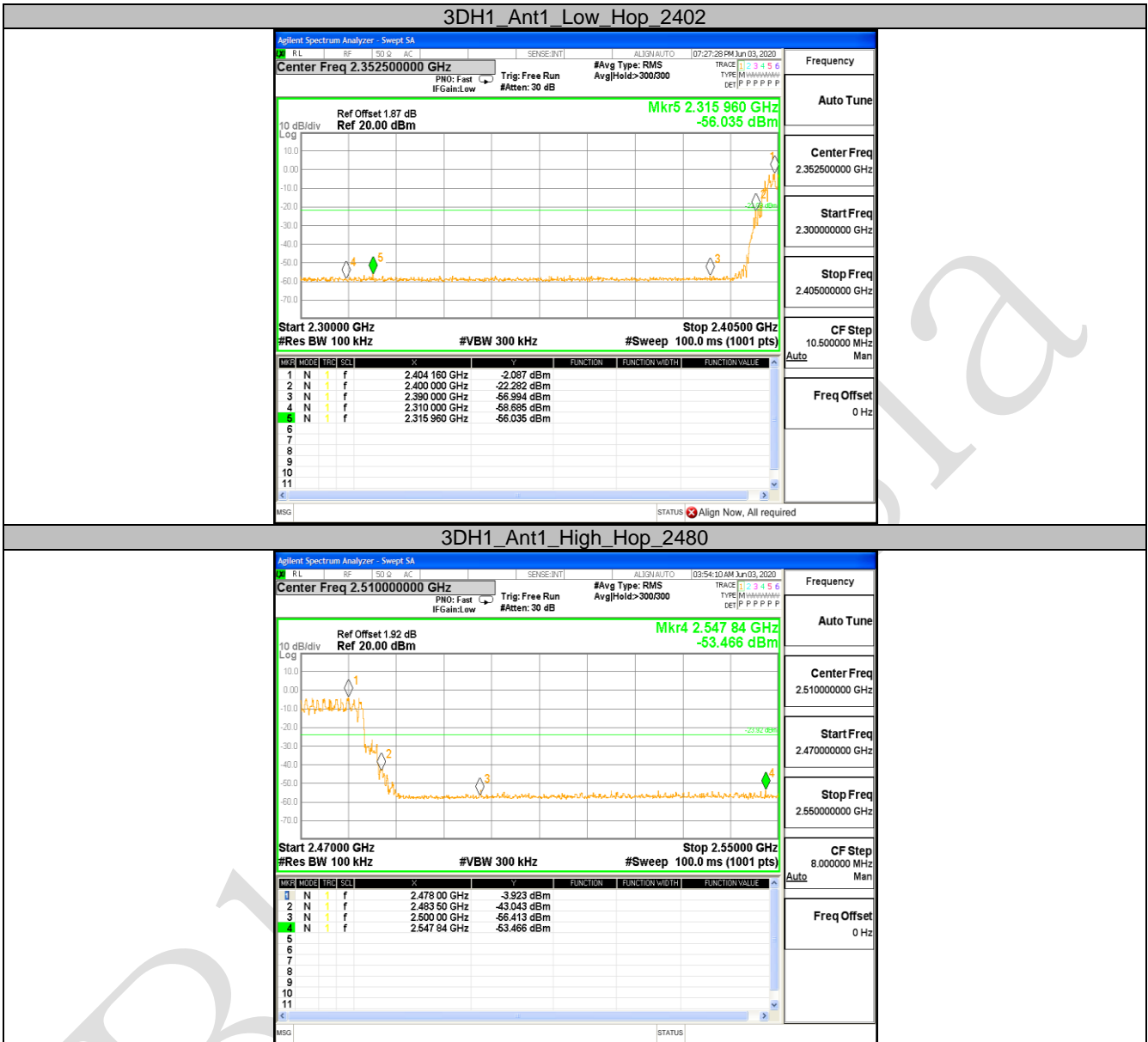












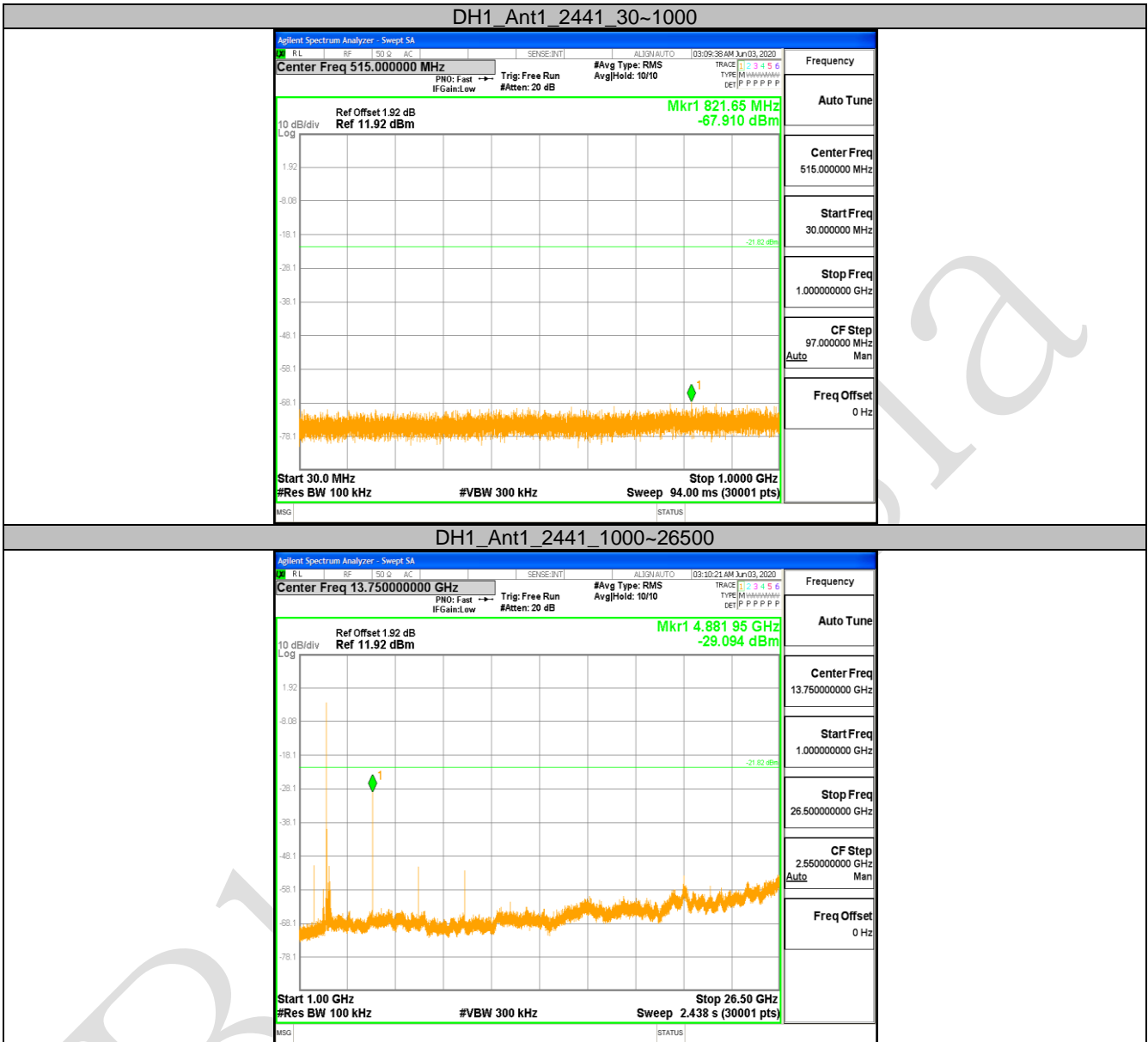
10.7 APPENDIX: CONDUCTED SPURIOUS EMISSION
Test Result

TestMode	Antenna	Channel	FreqRange [MHz]	RefLevel [dBm]	Result [dBm]	Limit [dBm]	Verdict
DH1	Ant1	2402	Reference	-6.59	-6.59	---	PASS
			30~1000	30~1000	-67.715	<=-26.589	PASS
			1000~26500	1000~26500	-30.21	<=-26.589	PASS
		2441	Reference	-1.82	-1.82	---	PASS
			30~1000	30~1000	-67.91	<=-21.817	PASS
			1000~26500	1000~26500	-29.094	<=-21.817	PASS
		2480	Reference	-1.70	-1.70	---	PASS
			30~1000	30~1000	-67.89	<=-21.702	PASS
			1000~26500	1000~26500	-27.564	<=-21.702	PASS
2DH1	Ant1	2402	Reference	-6.78	-6.78	---	PASS
			30~1000	30~1000	-68.422	<=-26.776	PASS
			1000~26500	1000~26500	-30.956	<=-26.776	PASS
		2441	Reference	-3.76	-3.76	---	PASS
			30~1000	30~1000	-66.947	<=-23.758	PASS
			1000~26500	1000~26500	-27.748	<=-23.758	PASS
		2480	Reference	-3.64	-3.64	---	PASS
			30~1000	30~1000	-68.351	<=-23.643	PASS
			1000~26500	1000~26500	-41.812	<=-23.643	PASS
3DH1	Ant1	2402	Reference	-6.76	-6.76	---	PASS
			30~1000	30~1000	-67.389	<=-26.764	PASS
			1000~26500	1000~26500	-35.029	<=-26.764	PASS
		2441	Reference	-3.74	-3.74	---	PASS
			30~1000	30~1000	-67.801	<=-23.735	PASS
			1000~26500	1000~26500	-29.028	<=-23.735	PASS
		2480	Reference	-4.66	-4.66	---	PASS
			30~1000	30~1000	-68.198	<=-24.655	PASS
			1000~26500	1000~26500	-31.029	<=-24.655	PASS

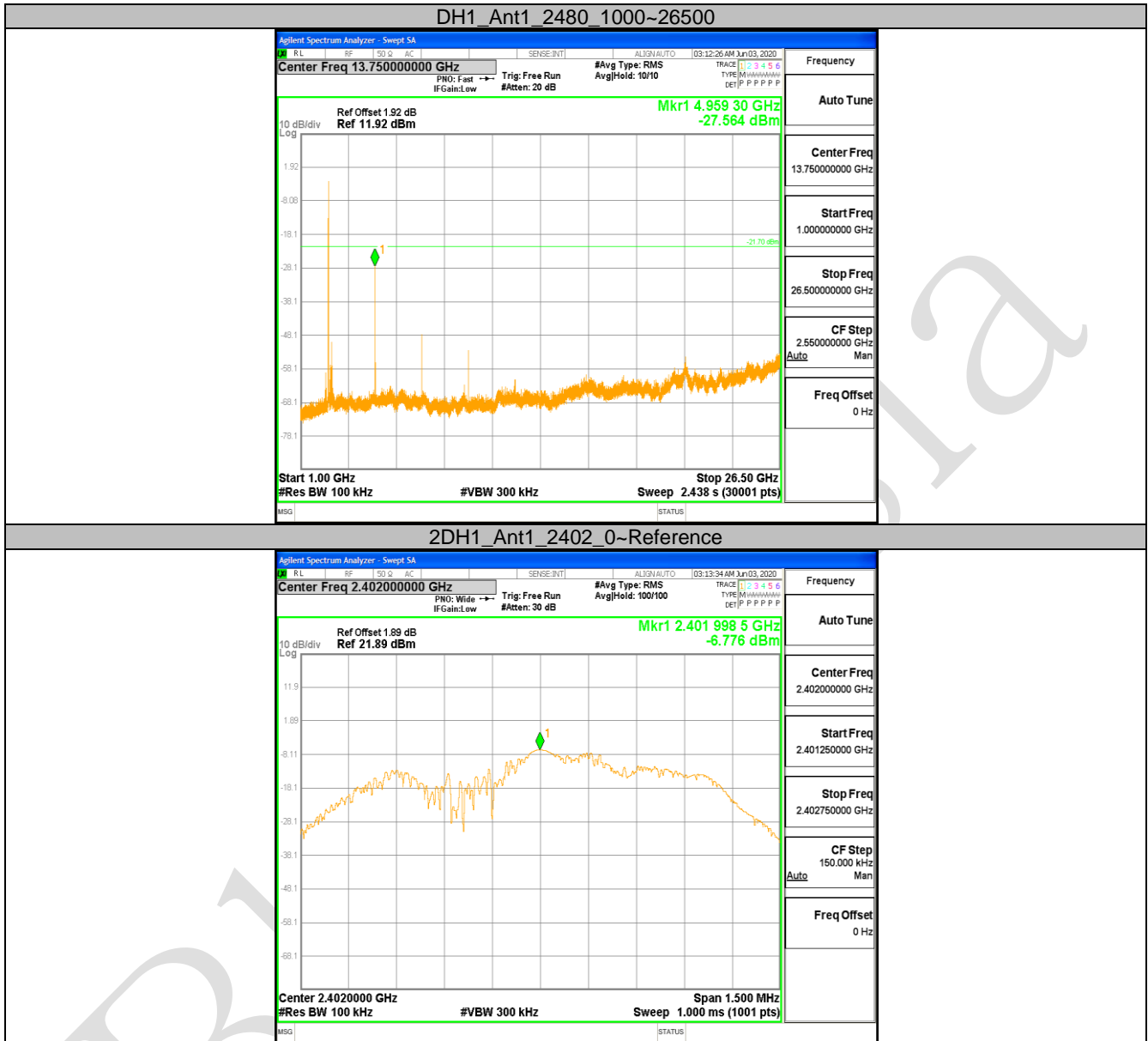
Test Graphs

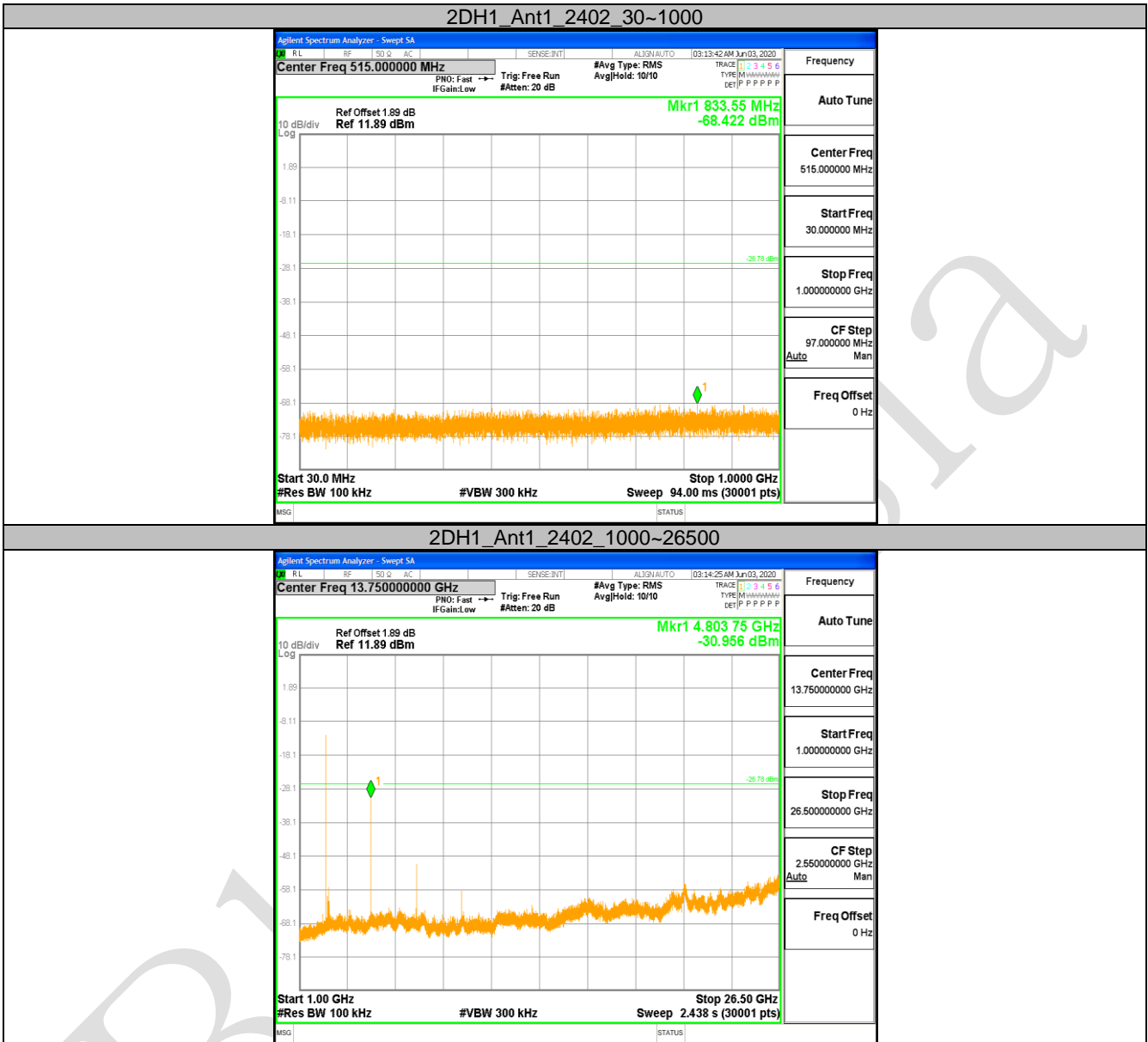




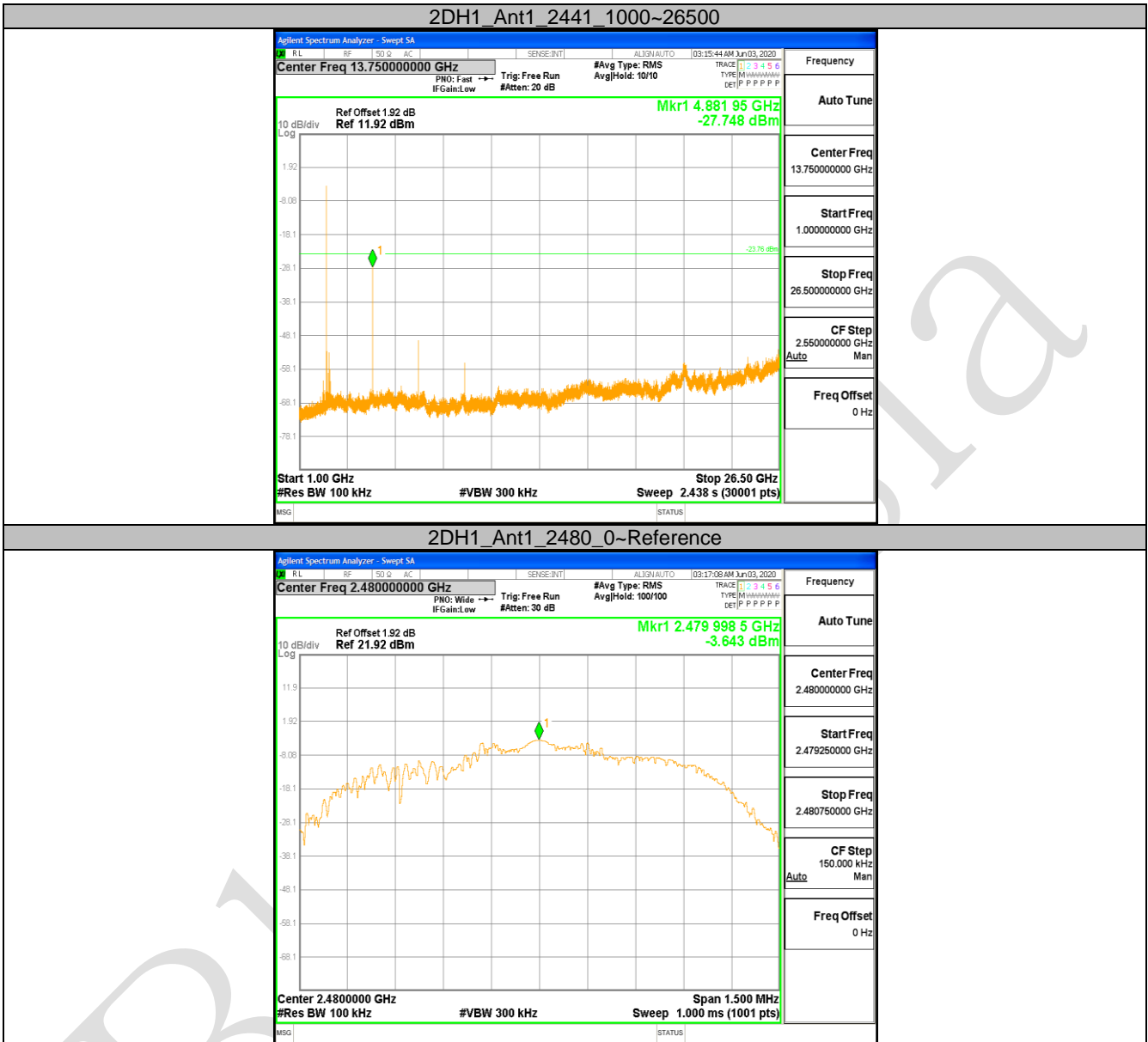


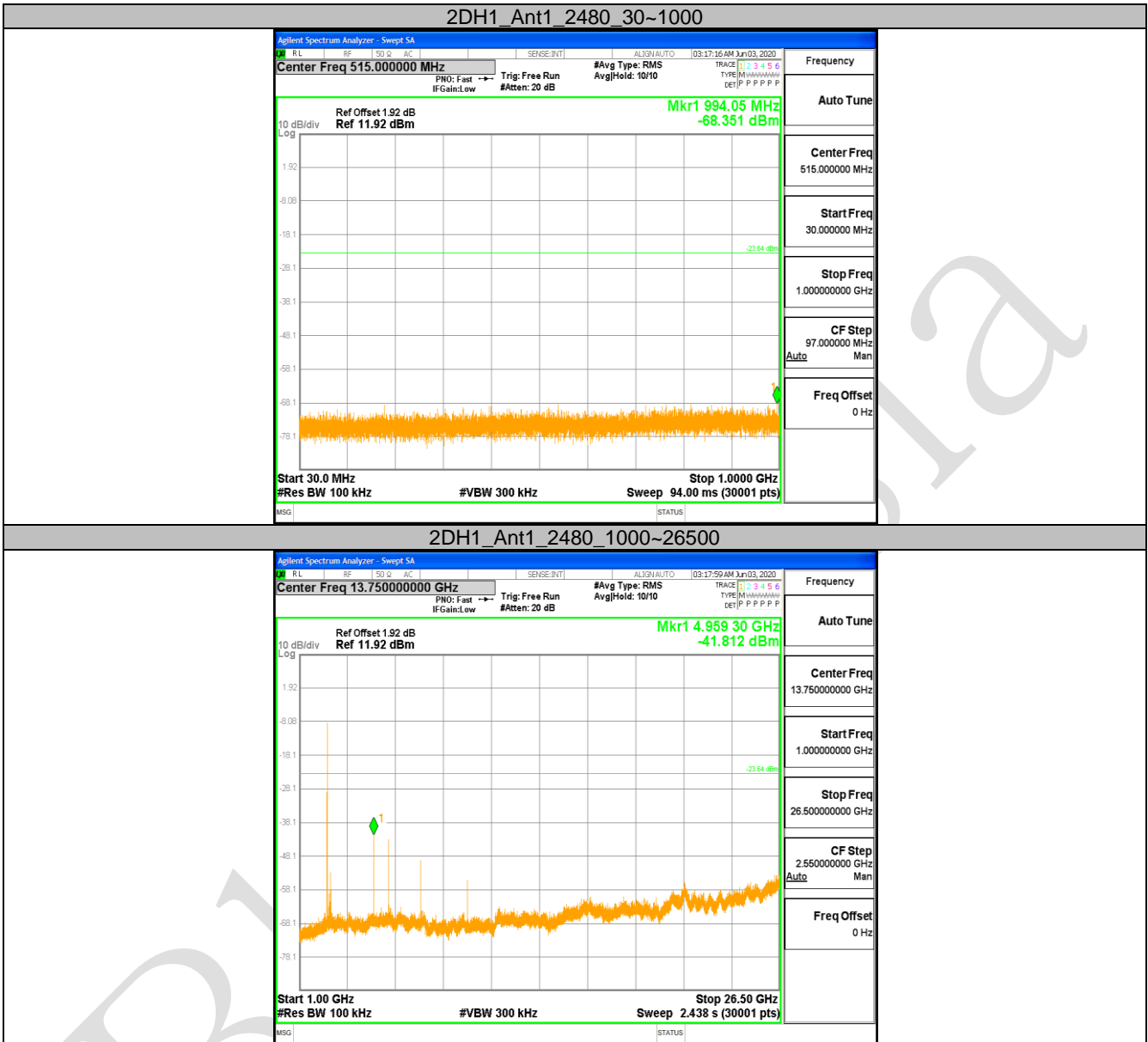




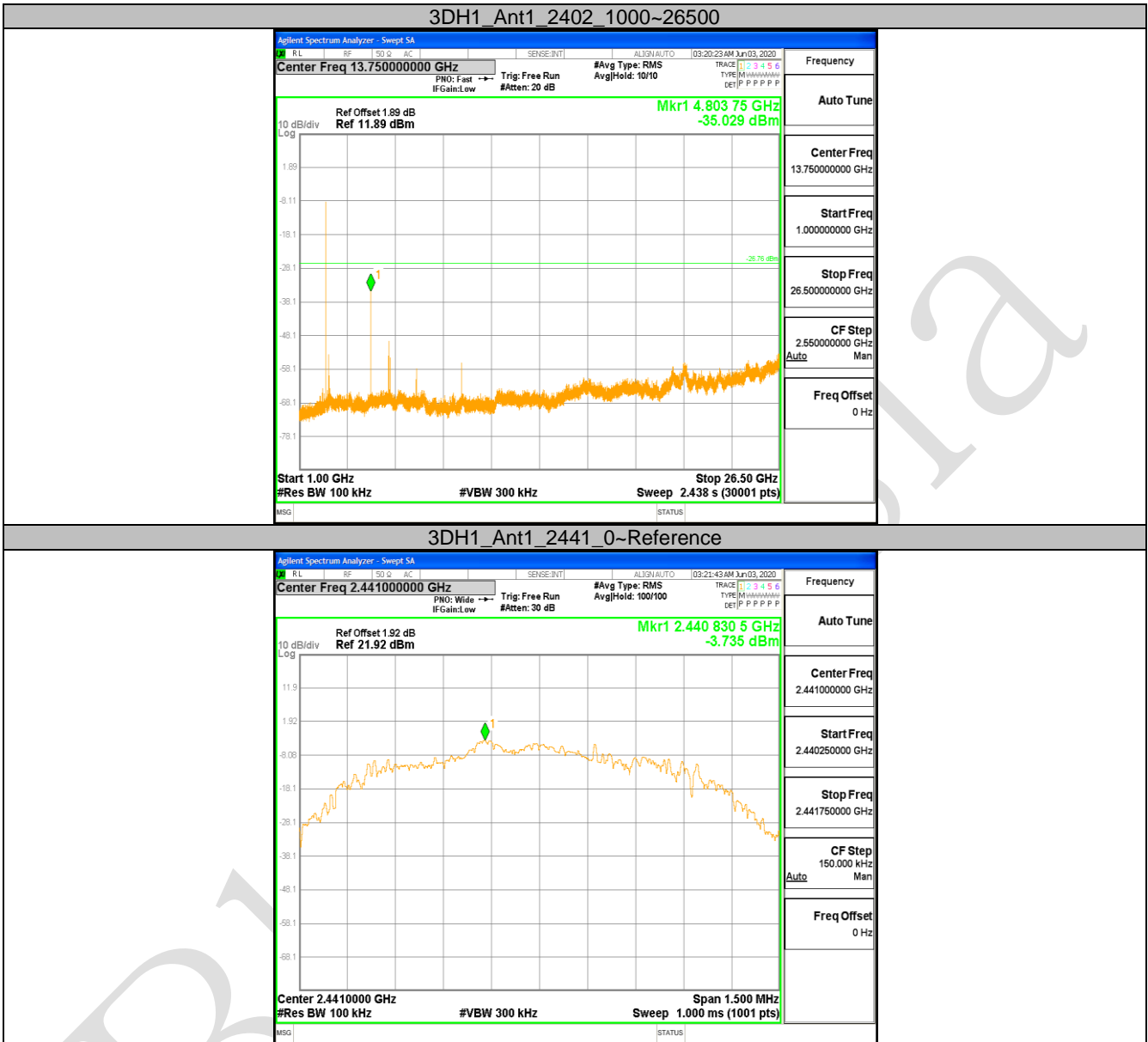


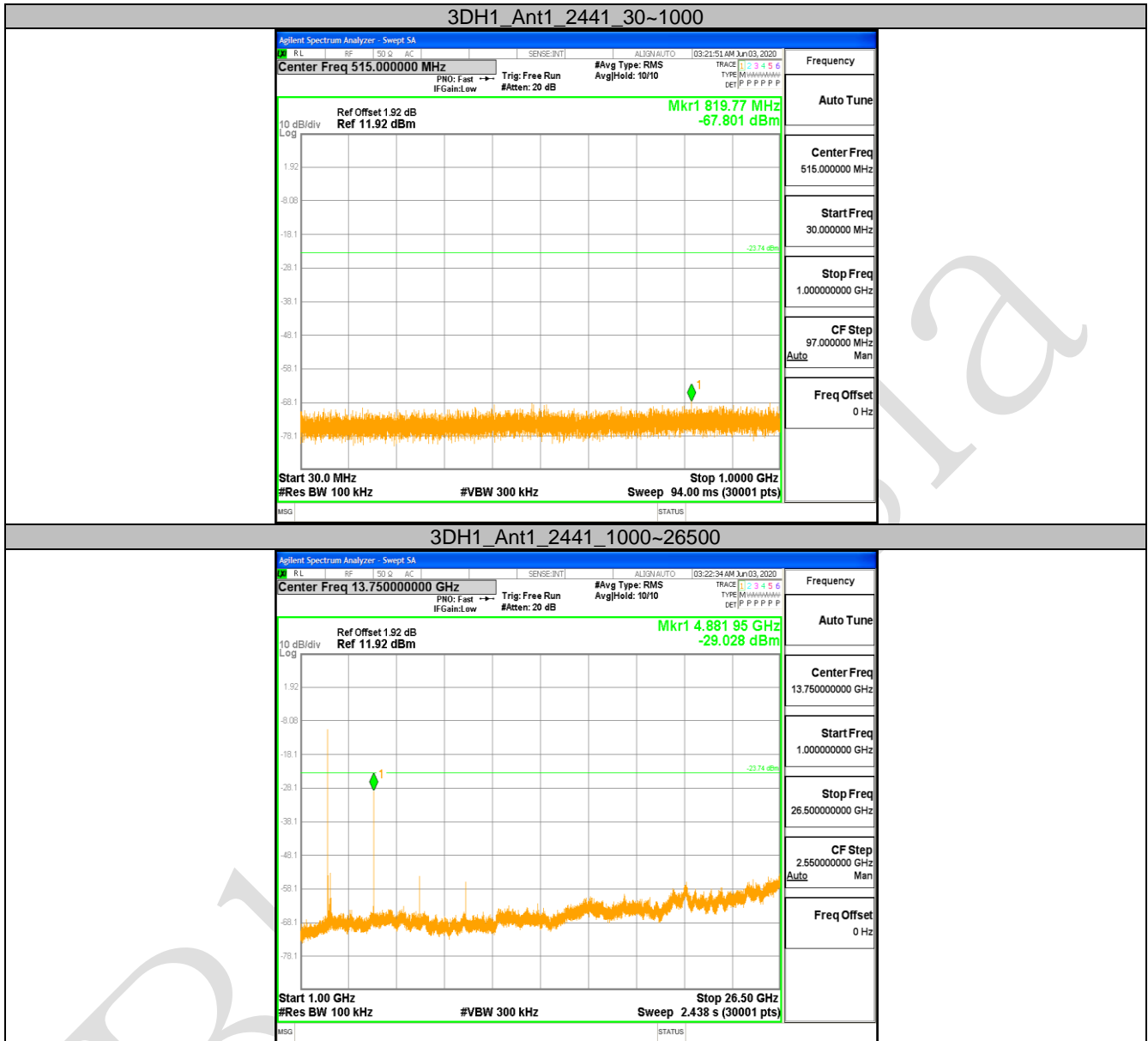




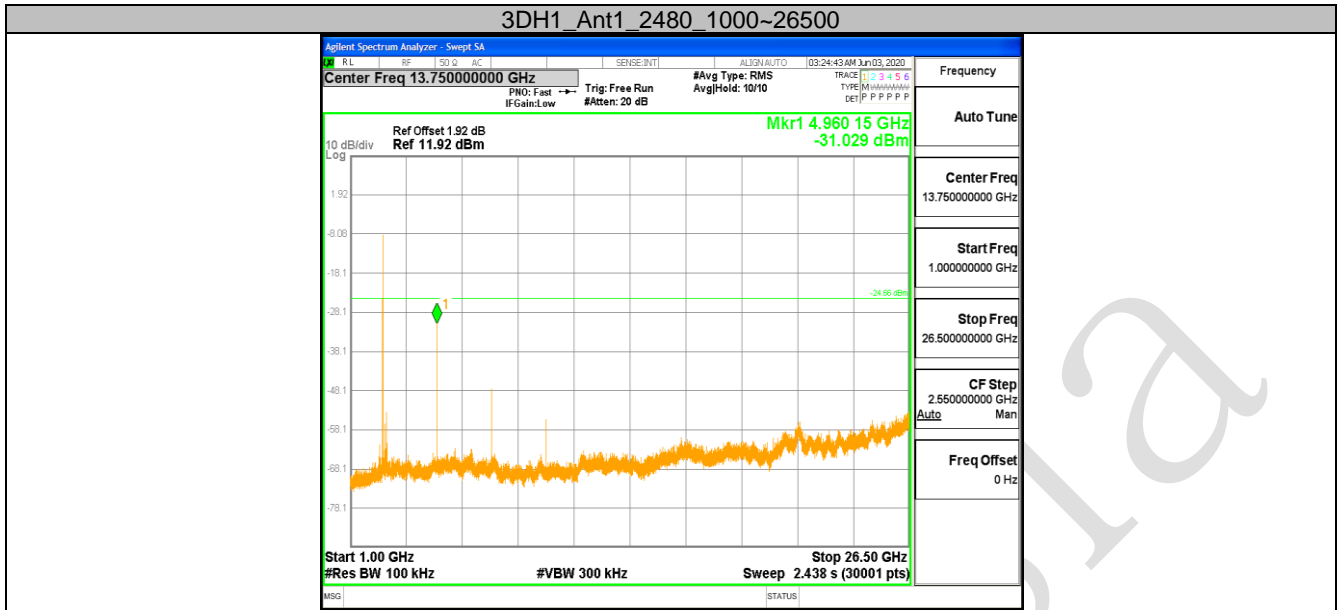












BlueAsia

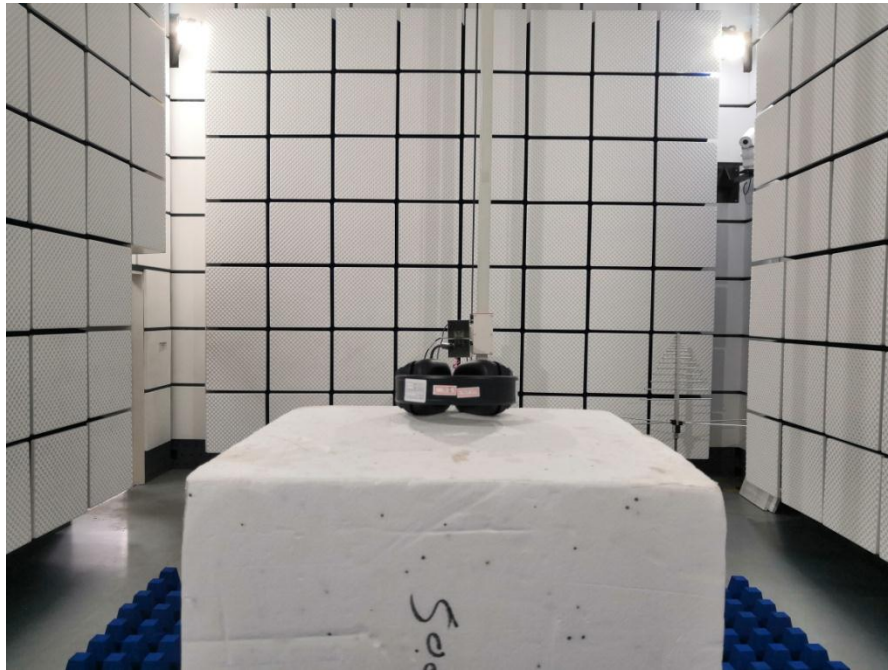
APPENDIX A: PHOTOGRAPHS OF TEST SETUP

Conducted Emissions at AC Power Line (150kHz-30MHz)



Radiated Spurious Emissions





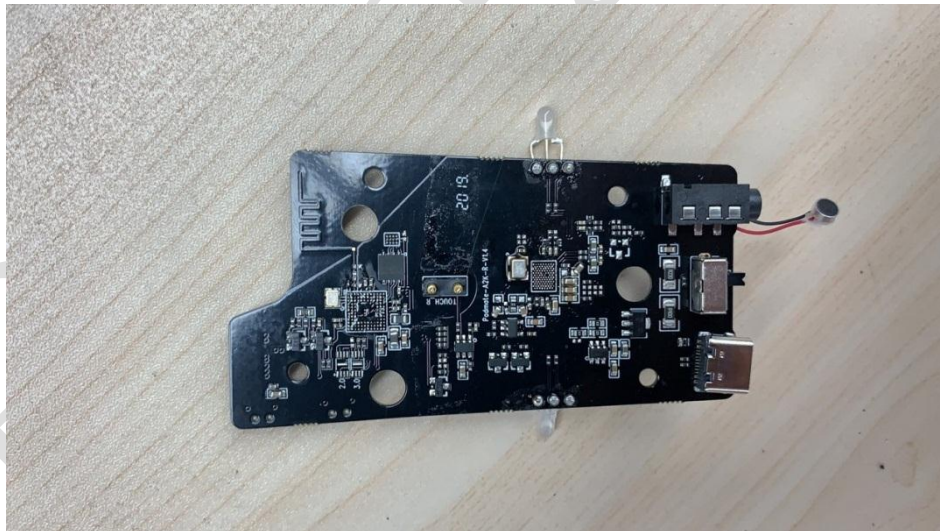
BlueAsia

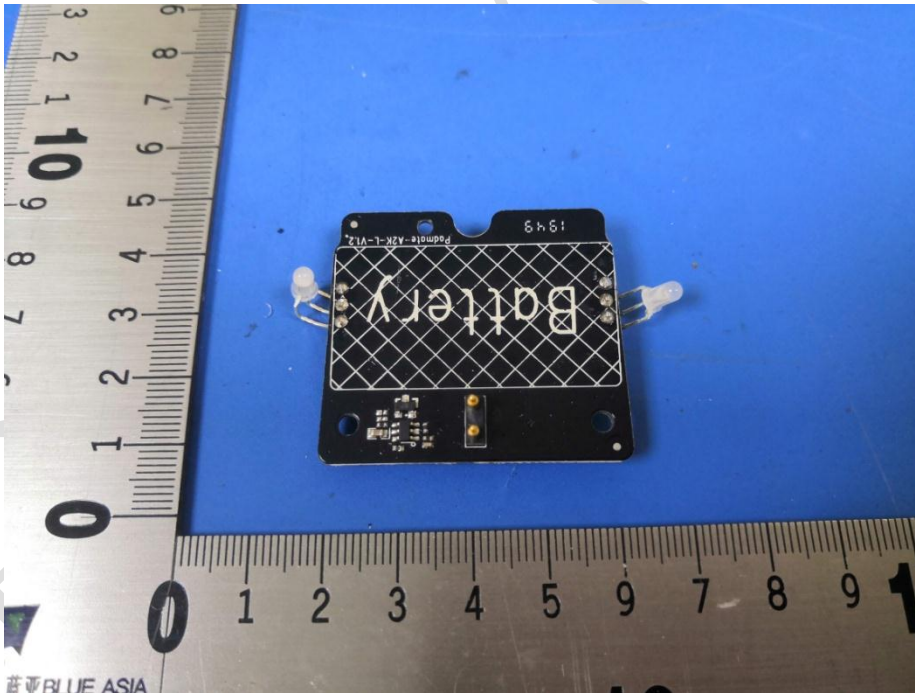
APPENDIX B: PHOTOGRAPHS OF EUT

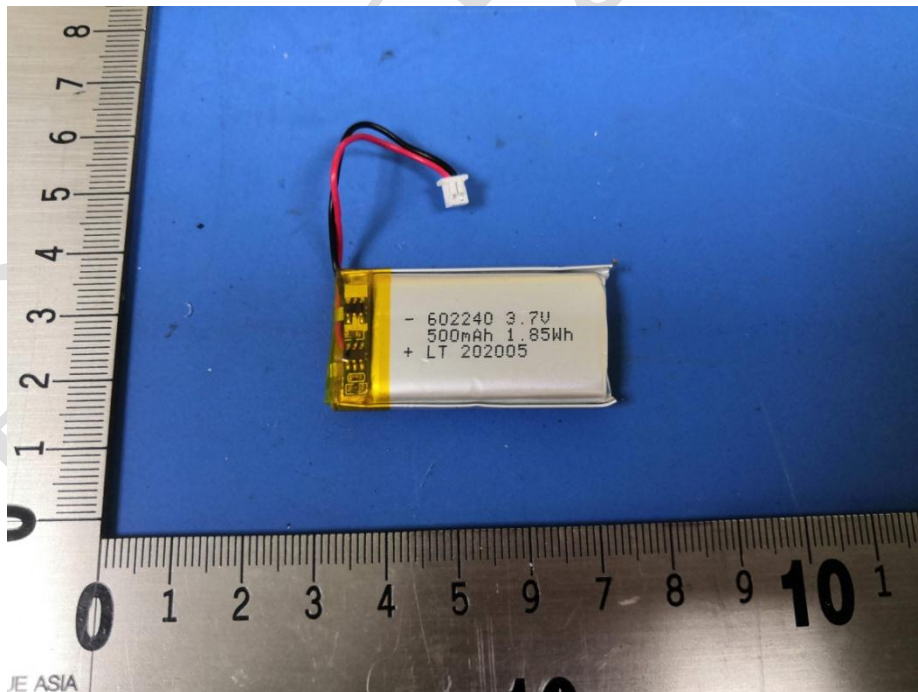
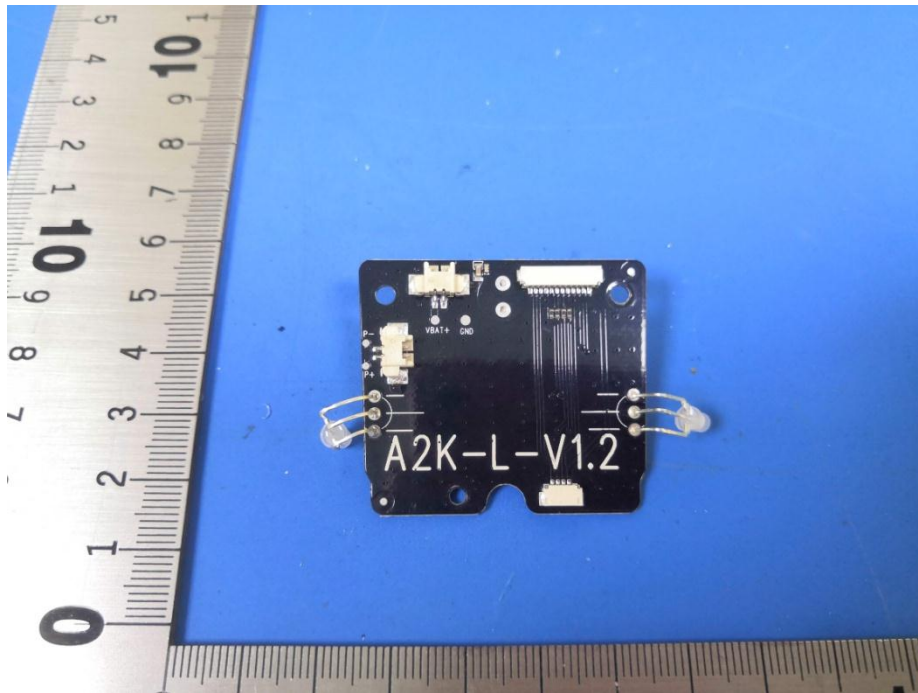


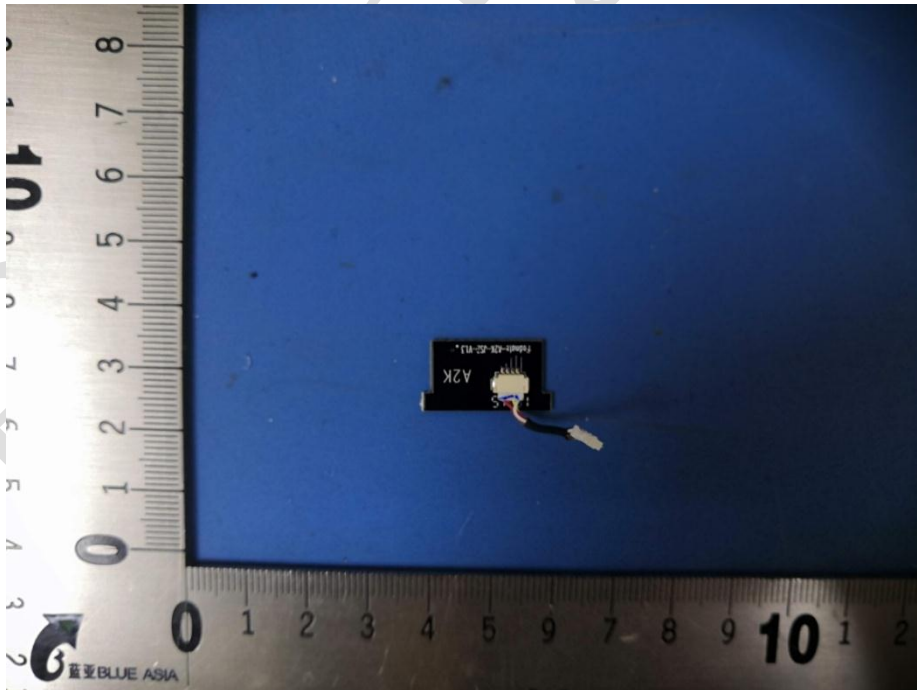
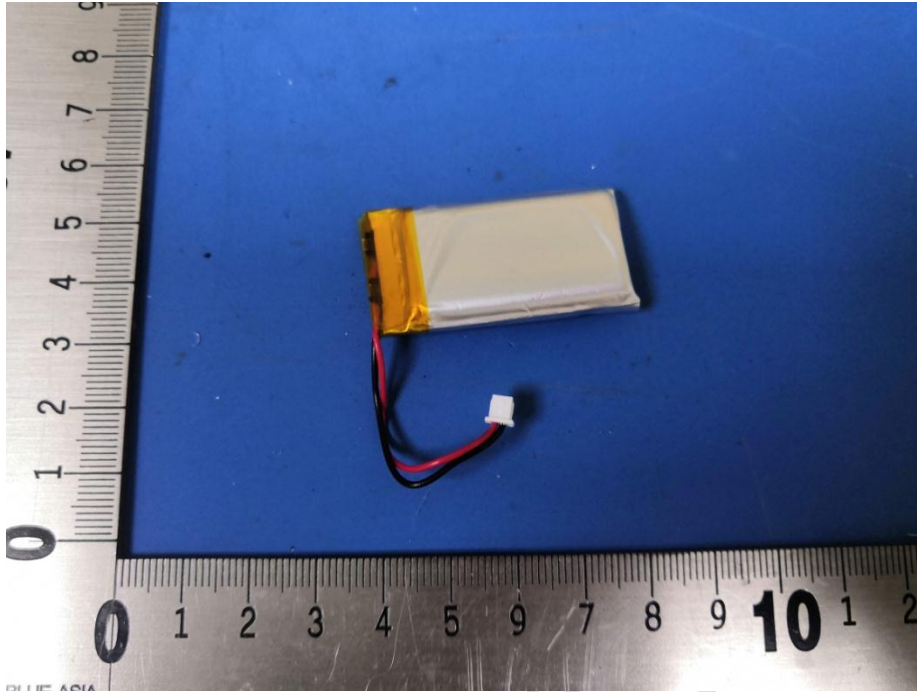


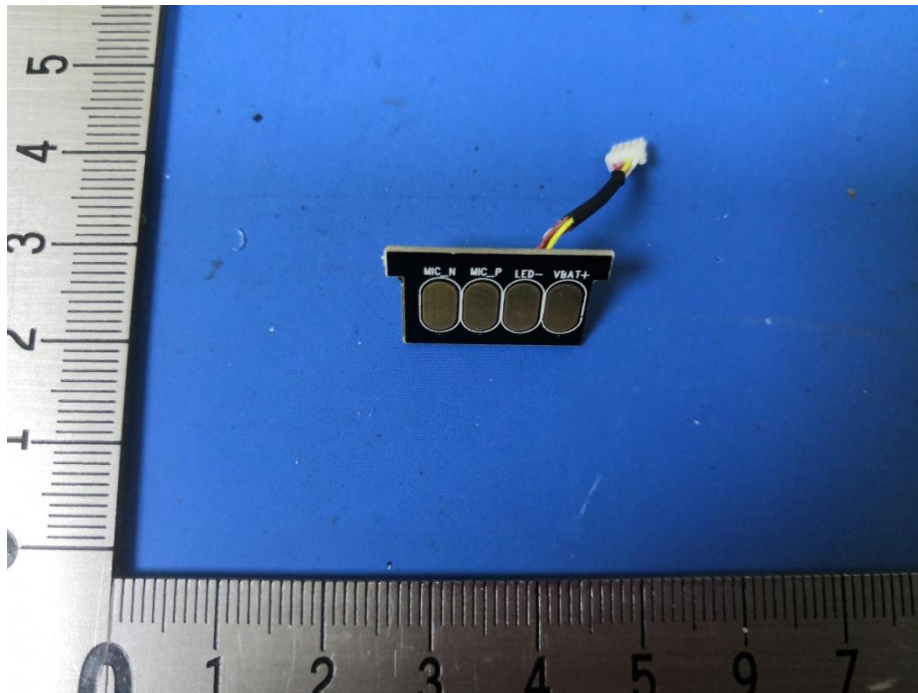












----END OF REPORT----

The test report is effective only with both signature and specialized stamp, The result(s) shown in this report refer only to the sample(s) tested. Without written approval of BlueAsia, this report can't be reproduced except in full.