

# SKY POCKET DRONE

YOUR VIEW IN THE SKY

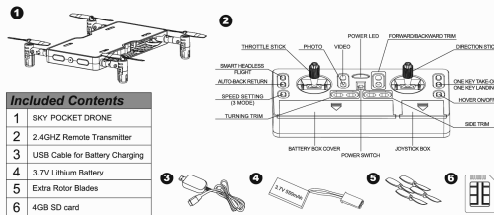


**NEVER LEAVE IT UNATTENDED WHILE CHARGING THIS CAN BE A FIRE HAZARD. WE ARE NOT RESPONSIBLE FOR MISUSE.**

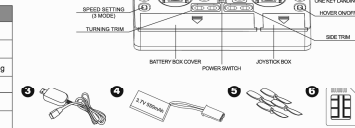
### Batteries:

- \*Use "AAA" non-rechargeable battery or "AAA" rechargeable battery.
- \*Only use batteries of the same or equivalent type as recommended
- \*Batteries are to be inserted with correct polarity.
- \*Do not short out the supply terminals.
- \*Lithium-ion battery could be flammable if misused.
- \*Do not mix old and new batteries.
- \*Do not mix alkaline batteries, standard (carbon-zinc), or rechargeable (Nickel-Cadmium) batteries.
- \*Remove exhausted batteries
- \*Take out the batteries when not in use.
- \*Rechargeable batteries are to be removed from the toy before being charged.
- \*If you do not fly the Quadcopter for a long time, take out the batteries inside the controller to avoid battery leakage which would damage the product.
- \*Photos are for reference only, the appearance of the actual product is based on what it is.
- \*When the controller/helicopter is underpowered, the control distance will be shortened. This will also result in difficulty of taking off and low flight altitude.
- \*Do not crash or allow helicopter to fall from high altitude. Helicopter will break and service life may be reduced.

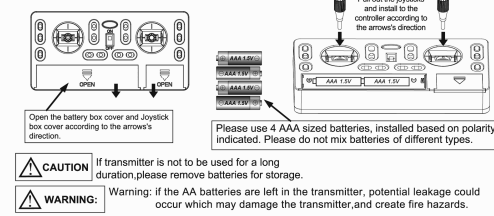
### Please retain this information for future reference



- Included Contents**
- 1 SKY POCKET DRONE
  - 2 2.4GHZ Remote Transmitter
  - 3 USB Cable for Battery Charging
  - 4 3 TV Lithium Battery
  - 5 Extra Rotor Blades
  - 6 4GB SD card



### TRANSMITTER BATTERY INSTALLATION



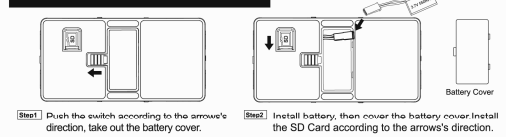
### WARNING

Suitable for Children 14+. Adult supervision is always recommended.  
 \*This product contains small parts which are a choking hazard. Keep away from small children.  
 \*Keep Quadcopter at least 10 feet away during use.  
 \*Correctly install the Quadcopter and fly it under the guidelines of the instruction manual, small parts should be assembled by an adult.  
 \*Manufacturers and dealers disclaim all responsibility for damage caused by misuse.  
 \*Keep hands, hair, and loose clothing away from rotors when powered on to prevent damage to the helicopter or serious injury to self.  
 \*This QUAD should not be flown IN HIGH WINDS(5+Mph) or near a pool.  
 \*Never leave a charging battery unattended.  
 \*When cleaning it, ensure that the helicopter is disconnected from the charger.  
 \*To prevent injury, do not point the antenna directly to faces, eyes, or other people.

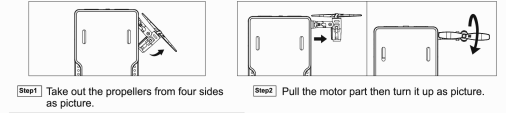
### NOTE ON THE BATTERY

This product is furnished with a battery pack, please pay attention to the following safety instructions:  
 ① Only use the charger provided by the factory for charging.  
 ② When charging the battery. If the battery is too hot, it means the battery is overcharged. In such case, users should stop charging the battery immediately. Overcharging could damage the battery eternally.  
 ③ After flying the helicopter, the battery temperature may be relatively high. Users are advised to wait about 10 minutes until the battery has cooled before recharging.  
 ④ Turn off the helicopter whenever it is not in use. If you don't plan on flying the helicopter for a long time, charge the battery for about 1 hour before storing it.  
**Caution:** Risk of explosion if battery is replaced by an incorrect type.  
 Dispose of used batteries according to the local laws in your state

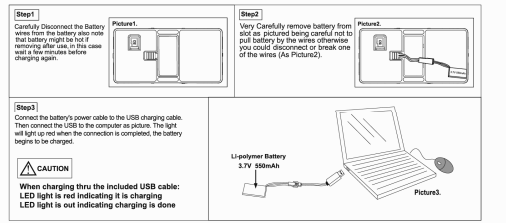
### BATTERY INSTALL/RAM CARD INSTALL



### OPERATE THE POCKET DRONE



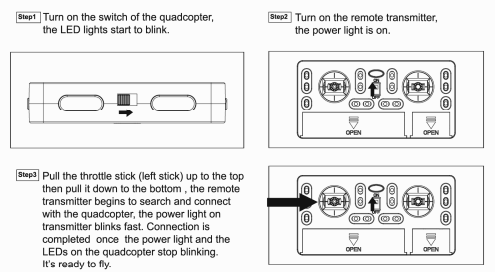
### THE PRODUCT BATTERY REFRESH



### ENVIRONMENT FOR FLIGHT

1. If using outside please fly on a sunny day, without wind if possible. Flying in extreme heat and/cold will affect flying control.  
 2. Lay the SKY POCKET DRONE on the ground after connecting the battery, please wait for the digital gyro to take 5-7 seconds to electronically stabilize. Push the throttle up and then back down to connect the remote to the SKY POCKET DRONE. The lights should stop blinking and you are now set to fly!

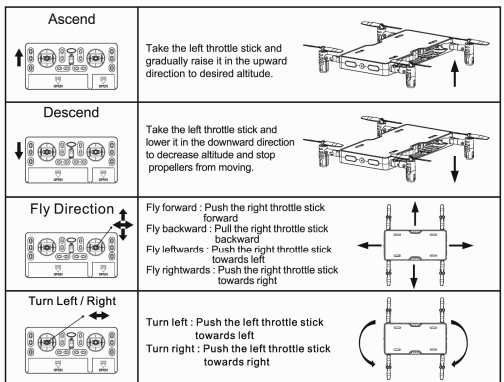
### CONNECT THE QUADCOPTER & START TO FLY



### AUTO HOVER ALTITUDE MODE:

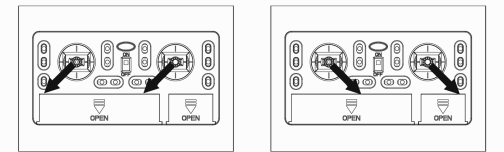
Press the Hover ON/OFF button to start or stop the motors.  
 Pull the throttle stick (left stick) upwards in order to make the quadcopter fly higher in altitude. Pull the throttle stick (left stick) downwards in order to make the quadcopter fly lower in altitude.  
 Once start the motors. Pull the throttle stick (left stick) upwards or downwards to the proper altitude. Release the throttle stick, the quadcopter will be hovering in the altitude.  
**HOW TO STOP FLYING:**  
 Pull the throttle stick (left stick) downwards to the proper altitude. Press the Hover ON/OFF button to stop the motors.

### CONTROL METHOD

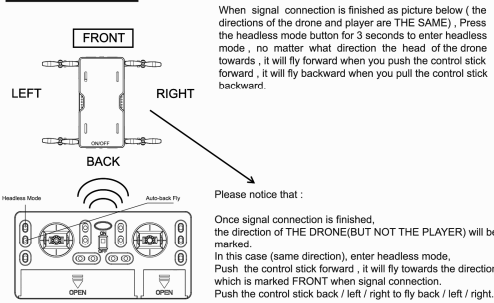


### HOW TO TRIM THE QUADCOPTER FOR BETTER FLYING

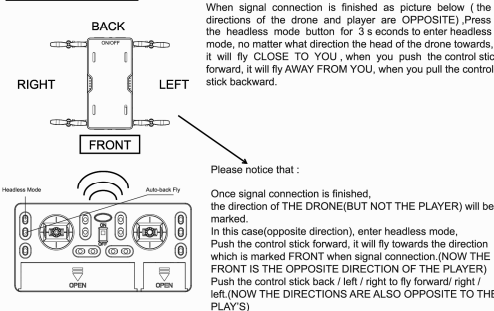
When the quadcopter leans towards one side, you need to trim it as follow  
 Put the quadcopter on the FLAT ground, then connect the quadcopter with remote transmitter.  
 Push the left stick and right stick both towards left 45° corner for 3 seconds until the LED lights blink and permanently light up.  
 Push the left stick and right stick both towards right 45° corner for 3 seconds until the LED lights blink and permanently light up.  
 Trim operation is completed, the flying experience will be better.



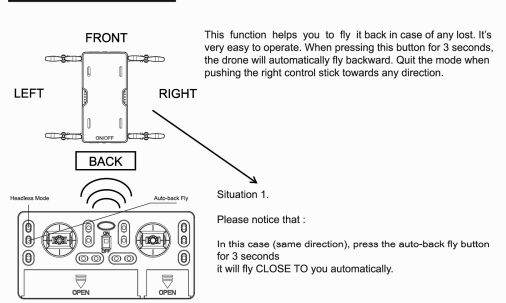
### HEADLESS MODE



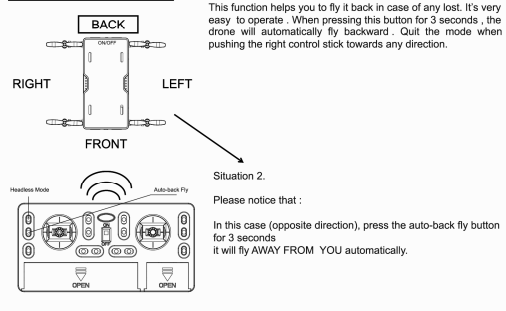
### HEADLESS MODE



### AUTO-BACK FLY MODE



### AUTO-BACK FLY MODE



Warning: Changes or modifications to this unit not expressly approved by the party responsible for compliance could void the user's authority to operate the equipment.

NOTE: This equipment has been tested and found to comply with the limits for a Class B digital device, pursuant to Part 15 of the FCC Rules. These limits are designed to provide reasonable protection against harmful interference in a residential installation. This equipment generates, uses and can radiate radio frequency energy and, if not installed and used in accordance with the instructions, may cause harmful interference to radio communications.

However, there is no guarantee that interference will not occur in a particular installation. If this equipment does cause harmful interference to radio or television reception, which can be determined by turning the equipment off and on, the user is encouraged to try to correct the interference by one or more of the following measures:

- ☒ Reorient or relocate the receiving antenna.
- ☒ Increase the separation between the equipment and receiver.
- ☒ Connect the equipment into an outlet on a circuit different from that to which the receiver is connected.
- ☒ Consult the dealer or an experienced radio/TV technician for help.