



# WAVE 2 AC WIRELESS ACCESS POINT

## Quick Start Guide



AN-530-AP-I-AC



# Regulatory Compliance & Safety Information for Model AN-530-AP-I-AC

Electrical Safety Advisory  
Sécurité électrique consultatif

## Important Safety Instructions

### Consignes de sécurité importantes

Read the safety instructions before using this product.  
Lisez les consignes de sécurité avant d'utiliser ce produit.

1. Read these instructions.  
Lisez ces instructions.
2. Keep these instructions.  
Conservez ces instructions.
3. Heed all warnings.  
Respectez tous les avertissements.
4. Follow all instructions.  
Suivez toutes les instructions.



5. Do not use this apparatus near water.  
Ne pas utiliser cet appareil près de l'eau.
6. Clean only with dry cloth.  
Nettoyez-le uniquement avec un chiffon sec.
7. Do not block any ventilation openings. Install in accordance with the manufacturer's instructions.  
Ne pas bloquer les ouvertures de ventilation. Installer conformément aux instructions du fabricant.
8. Do not install near any heat sources such as radiators, heat registers, stoves, or other apparatus (including amplifiers) that produce heat.  
Ne pas installer près de sources de chaleur telles que des radiateurs, registres de chaleur, poêles, ou autres appareils (incluant les amplificateurs) qui produisent de la chaleur.
9. Do not defeat the safety purpose of the polarized or grounding-type plug. A polarized plug has two blades with one wider than the other. A grounding type plug has two blades and a third grounding prong. The wide blade or the third prong is provided for your safety. If the provided plug does not fit into your outlet, consult an electrician for replacement of the obsolete outlet.  
Ne pas contourner le dispositif de sécurité de la fiche polarisée ou de mise à la terre. Une fiche polarisée possède deux lames dont une plus large que l'autre. Une fiche de terre a deux lames et une troisième broche de terre. La lame large ou la troisième broche est fournie pour votre sécurité. Si la fiche fournie ne s'adapte pas à votre prise, consultez un électricien pour le remplacement de la prise obsolète.
10. Protect the power cord from being walked on or pinched particularly at plugs, convenience receptacles, and the point where they exit from the apparatus.  
Protégez le cordon d'alimentation ne soit piétiné ou pincé, en particulier au niveau des fiches, des prises et au point où il sort de l'appareil.



11. Only use attachments/accessories specified by the manufacturer.  
Utilisez uniquement des fixations / accessoires spécifiés par le fabricant.
12. Use only with the cart, stand, tripod, bracket, or table specified by the manufacturer, or sold with the apparatus. When a cart is used, use caution when moving the cart/apparatus combination to avoid injury from tip-over.  
Utilisez uniquement avec le chariot, le socle, le trépied, le support ou la table spécifiés par le fabricant ou vendu avec l'appareil. Lorsque vous utilisez un chariot, soyez prudent lorsque vous déplacez l'ensemble chariot / appareil pour éviter des blessures dues au renversement.
13. Unplug this apparatus during lightning storms or when unused for long periods of time.  
Débranchez cet appareil pendant les orages ou lorsqu'il n'est pas utilisé pendant de longues périodes de temps.
14. Refer all servicing to qualified service personnel. Servicing is required when the apparatus has been damaged in any way, such as power-supply cord or plug is damaged, liquid has been spilled or objects have fallen into the apparatus, the apparatus has been exposed to rain or moisture, does not operate normally, or has been dropped.  
Confiez toutes les réparations à un personnel qualifié. Une réparation est nécessaire lorsque l'appareil a été endommagé de quelque façon que ce soit le cordon d'alimentation ou la fiche est endommagé, du liquide a été renversé ou si des objets sont tombés dans l'appareil, l'appareil a été exposé à la pluie ou à l'humidité, ne fonctionne pas normalement, ou s'il est tombé.
15. This equipment uses AC power which can be subjected to electrical surges, typically lightning transients which are very destructive to customer terminal equipment connected to AC power sources. The warranty for this equipment does not cover damage caused by electrical surge or lightning transients. To reduce the risk of this equipment becoming damaged it is suggested that the customer consider installing a surge arrester.  
Cet équipement utilise la puissance AC qui peuvent être soumis à des surtensions électriques, la foudre





généralement transitoires qui sont très destructives envers les équipements terminaux connectés à des sources d'alimentation CA. La garantie de cet appareil ne couvre pas les dommages causés par les surtensions électriques ou transitoires de foudre. Pour réduire le risque de cet équipement devient endommagé, il est suggéré que le client envisager l'installation d'un limiteur de surtension.

16. To completely disconnect unit power from the AC mains, remove the power cord from the appliance coupler and/or turn off the circuit breaker. To reconnect power, turn on the circuit breaker following all safety instructions and guidelines. The circuit breaker shall remain readily accessible.  
Pour débrancher complètement l'alimentation secteur du réseau secteur, retirez le cordon d'alimentation du coupleur de l'appareil et / ou éteignez le disjoncteur. Pour reconnecter l'alimentation, allumez le disjoncteur en suivant toutes les consignes et consignes de sécurité. Le disjoncteur doit être facilement accessible.
17. This product relies on the buildings installation for short-circuit (overcurrent) protection. Ensure that the protective device is rated not greater than: 20A.  
Ce produit repose sur l'installation des bâtiments pour les courts-circuits (surtension) de protection. Assurez-vous que le dispositif de protection est assignée ne dépassant pas: 20A.
18. **CAUTION:** As with all batteries, there is a risk of explosion or personal injury if the battery is replaced by an incorrect type. Dispose of used battery according to the instructions of the battery manufacturer and applicable environmental guidelines. Do not open, puncture or incinerate the battery, or expose it to conducting materials, moisture, liquid, fire or heat above 54° C or 130° F.  
**ATTENTION:** Comme avec toutes les batteries, il ya un risque d'explosion ou de blessure si la batterie est remplacée par un type incorrect. Éliminez les batteries usagées selon les instructions du fabricant de la batterie et applicables des directives environnementales. Ne pas ouvrir, percer ou incinérer la batterie, ou de l'exposer à des matériaux conducteurs, de l'humidité, du liquide, un incendie ou une température supérieure à 54 ° C ou 130 ° F.
19. Never push objects of any kind into this product through cabinet slots as they may touch dangerous voltage points or short out parts that could result in fire or electric shock.



N'introduisez jamais d'objets d'aucune sorte dans ce produit à travers les fentes du boîtier car ils pourraient toucher des points de tension dangereux ou court-circuiter des pièces qui pourraient entraîner un incendie ou un choc électrique.

20. This product can interfere with electrical equipment such as tape recorders, TV sets, radios, computers and microwave ovens if placed in close proximity.  
Ce produit peut interférer avec des appareils électriques tels que les magnétophones, téléviseurs, radios, ordinateurs et fours à micro-ondes si placés à proximité.
21. PoE considered a Network Environment 0 per IEC TR62101, and thus the interconnected ITE circuits may be considered ES1. The installation instructions clearly state that the ITE is to be connected only to PoE networks without routing to the outside plant.  
PoE considéré comme un environnement de réseau 0 selon IEC TR62101 et, par conséquent, les circuits ITE interconnectés peuvent être considérés comme ES1. Les instructions d'installation indiquent clairement que l'ITE doit être connecté uniquement aux réseaux PoE sans acheminement vers l'installation externe.
22. **CAUTION:** The Optical Transceiver used with this product should use UL listed, and Rated Laser Class I, 3.3 Vdc.  
**ATTENTION:** L'émetteur-récepteur optique utilisé avec ce produit doit utiliser la liste UL et la classe de laser nominale I, 3,3 Vcc.



The lightning flash and arrow head within the triangle is a warning sign alerting you of dangerous voltage inside the product. L'éclair et la flèche dans le triangle est un signe d'alerte pour vous avertir d'une tension dangereuse à l'intérieur du produit.



Caution: To reduce the risk of electric shock, do not remove cover (or back). No user serviceable parts inside. Refer servicing to qualified service personnel. Attention: Pour réduire le risque de choc électrique, ne pas retirer le couvercle (ou l'arrière). Aucune pièce réparable par l'utilisateur. Confiez l'entretien à un personnel qualifié.



The exclamation point within the triangle is a warning sign alerting you of important instructions accompanying the product. Le point d'exclamation dans un triangle est un signe d'avertissement vous signale des instructions importantes accompagnant le produit.

See marking on bottom / back of product.

Voir le marquage sur les bas / dos du produit.



**Warning!** To reduce the risk of electrical shock, do not expose this apparatus to rain or moisture.

**AVERTISSEMENT!** Pour réduire le risque de choc électrique, n'exposez pas cet appareil à la pluie ou à l'humidité.

Save these instructions.

Conservez ces instructions.

The AN-530-AP-I-AC uses the following power inputs: DC IN: 12V $\overline{=}$ , 2A

PoE+ IN: 48V $\overline{=}$ , 0.53A







## USA & Canada Compliance

### FCC Part 15, Subpart B & IC Unintentional Emissions Interference Statement

This equipment has been tested and found to comply with the limits for a Class B digital device, pursuant to Part 15 of the FCC rules. These limits are designed to provide reasonable protection against harmful interference when the equipment is operated in a residential installation. This equipment generates uses and can radiate radio frequency energy and, if not installed and used in accordance with the instructions, may cause harmful interference to radio communications. However, there is no guarantee that interference will not occur in a particular installation. If this equipment does cause harmful interference to radio or television reception, which can be determined by turning the equipment off and on, the user is encouraged to try to correct the interference by one or more of the following measures:

- Reorient or relocate the receiving antenna.
- Increase the separation between the equipment and receiver.
- Connect the equipment into an outlet on a circuit different from that to which the receiver is connected.
- Consult the dealer or an experienced radio/TV technician for help.

This device complies with part 15 of the FCC rules and ISED's license-exempt RSSs. Operation is subject to the following two conditions: (1) This device may not cause harmful interference, and (2) this device must accept any interference received, including interference that may cause undesired operation.

Cet appareil est conforme à la section 15 des règles de la FCC et ISED's aux RSS exempts de licence d'ISED. Son utilisation est soumise aux deux conditions suivantes: (1) Cet appareil ne doit pas causer d'interférences nuisibles et (2) cet appareil doit accepter toutes les interférences reçues, y compris celles pouvant entraîner un fonctionnement non souhaité.



IMPORTANT! Any changes or modifications not expressly approved by the party responsible for compliance could void the user's authority to operate this equipment.

IMPORTANT! Tous les changements ou modifications pas expressément approuvés par la partie responsable de la conformité ont pu vider l'autorité de l'utilisateur pour actionner cet équipement.

**Canada Warning Statement:**

CAN ICES-3 (B)/NMB-3(B)

- This product meets the applicable Innovation, Science and Economic Development Canada technical specifications.
- Ce produit répond aux spécifications techniques applicables à l'innovation, Science et Développement économique Canada.

**FCC Part 15, Subpart C / RSS-247 Intentional Emissions Interference Statement**

Compliance of this equipment is confirmed by the following certification numbers that are placed on the equipment:

**Notice:** The term "FCC ID:" and "IC:" before the certification number signifies that FCC and Industry Canada technical specifications were met.

FCC ID: 2AJACAN530APIAC

IC: 7848A-AN530APIAC



This equipment must be installed by qualified professionals or contractors in accordance with FCC Part 15.203 & IC RSS-247, Antenna Requirements. Do not use any antenna other than the one provided with the unit.

Operations in the 5.15-5.25GHz band are restricted to indoor usage only.

**Caution :**

(i) the device for operation in the band 5150-5250 MHz is only for indoor use to reduce the potential for harmful interference to co-channel mobile satellite systems;

(ii) the maximum antenna gain permitted for devices in the band 5725-5850 MHz shall be such that the equipment still complies with the e.i.r.p. limits specified for point-to-point and non-point-to-point operation as appropriate; and

(iii) Users should also be advised that high-power radars are allocated as primary users (i.e. priority users) of the bands 5650-5850 MHz and that these radars could cause interference and/or damage to LE-LAN devices.

**Avertissement:**

(i) les dispositifs fonctionnant dans la bande 5150-5250 MHz sont réservés uniquement pour une utilisation à l'intérieur afin de réduire les risques de brouillage préjudiciable aux systèmes de satellites mobiles utilisant les mêmes canaux;

(ii) le gain maximal d'antenne permis (pour les dispositifs utilisant la bande de 5725 à 5 850 MHz) doit être conforme à la limite de la p.i.r.e. spécifiée pour l'exploitation point à point et l'exploitation non point à point, selon le cas;



(iii) De plus, les utilisateurs devraient aussi être avisés que les utilisateurs de radars de haute puissance sont désignés utilisateurs principaux (c.-à-d., qu'ils ont la priorité) pour les bandes 5650-5850 MHz et que ces radars pourraient causer du brouillage et/ou des dommages aux dispositifs LAN-EL.

### **FCC Partie 15, sous-partie C / RSS-247 Déclaration volontaire des émissions interférences**

Conformité de cet appareil est confirmé par les chiffres de certification suivants qui sont placés sur l'équipement:

Avis: Le terme «FCC ID:" et "IC:" devant le numéro de certification signifie que les spécifications techniques de la FCC et d'Industrie Canada ont été respectées.

FCC ID: 2AJACAN530APIAC

IC: 7848A-AN530APIAC

Cet équipement doit être installé par des professionnels qualifiés ou entrepreneurs conformément aux normes FCC partie 15.203 & IC RSS-247, Exigences d'antenne. Ne pas utiliser une antenne autre que celui fourni avec l'appareil.

Cet émetteur ne doit pas être localisé ou fonctionner avec d'autres antennes ou transmetteurs. Les opérations dans la bande 5.15-5.25GHz sont limitées à l'utilisation à l'intérieur seulement.

### **RF Radiation Exposure Statement**

This equipment complies with FCC RF and IC radiation exposure limits set forth for an uncontrolled environment. This equipment should be installed and operated with a minimum distance of 20 centimeters between the radiator



and your body or nearby persons.

### **Déclaration d'exposition aux radiations RF**

Cet équipement est conforme aux limites d'exposition aux rayonnements RF et IC de la FCC définies pour un environnement non contrôlé. Cet équipement doit être installé et utilisé avec une distance minimale de 20 centimètres entre le radiateur et votre corps ou des personnes proches.

### **Europe Compliance**

Compliance of this equipment is confirmed by the following logo that is placed on the product ID label that is placed on the bottom of the equipment. The full text of the EU Declaration of Conformity (DoC) is available on the regulatory webpage:



This equipment complies with CE radiation exposure requirement set forth for an uncontrolled environment. End users must follow the specific operating instructions for satisfying RF exposure compliance.

This equipment should be installed and operated with minimum distance 20cm between the radiator and your body.

This product can be put into service in all of the EU member states, European Free Trade Association (EFTA) and EU candidate countries without any restriction

This product can be put into service in all of the EU member states, European Free Trade Association (EFTA) and



EU candidate countries without any restriction.



AT	BE	BG	HR	CY	CZ	DK
EE	FI	FR	DE	EL	HU	IE
IT	LV	LT	LU	MT	NL	PL
PT	RO	SK	SI	ES	SE	UK

The frequency and maximum transmitted power in EU are listed as below:

<b>AN-530-AP-I-AC</b>
2412 - 2472 MHz: 17dBm
5180 - 5240 MHz: 18.5dBm

Operations in the 5.15-5.35GHz band are restricted to indoor usage only.

## Recycling

Wirepath Home Systems, LLC understands that a commitment to the environment is essential for a health life and sustainable growth for future generations. We are committed to supporting the environmental standards, laws, and directives that have been put in place by various communities and countries that deal with concerns for the environment. This commitment is represented by combining technological innovation with sound environmental business decisions.



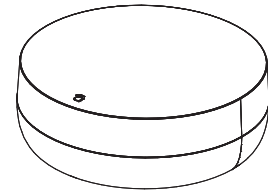
# Welcome to Araknis Networks™

Thank you for choosing an Araknis™ Tri-Band Mesh Enabled Wireless Access Point (WAP).

With improved thermal performance by way of a die-cast aluminum bottom and a tried and true mounting system, this tri-band mesh enabled access point has the versatility to maintain performance in both wireless and wired installs for home and commercial applications.

## Features

- Sleek Circular Design
- Unobtrusive Recessed Lighting
- 1 x Gigabit LAN Port (w/802.3at PoE-IN)
- 1 x Gigabit LAN Port (data only)
- Mesh Enabled
- Multi-User MIMO
- 2x2 Tri-Band Wave 2-AC 2200Mbps
- OvrC Enabled

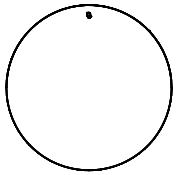


AN-530-AP-I-AC

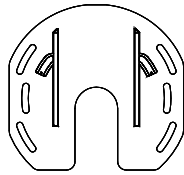




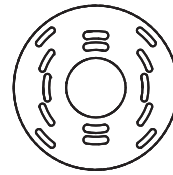
# Step 1: Unbox



Wireless Access Point  
(WAP)\*



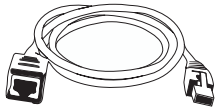
Mounting Bracket



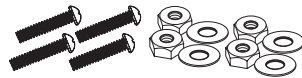
Tile Ceiling Backing Plate



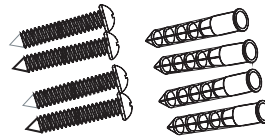
Quick Start Guide



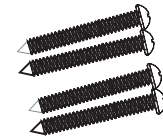
Male-to-Female  
Category Jumper Cable



Tile Ceiling  
Mounting Hardware



Drywall  
Mounting Hardware

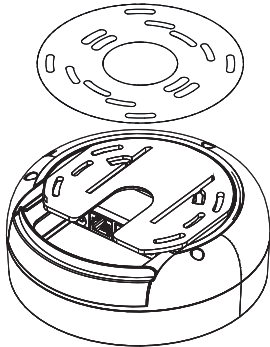


Wood Surface  
Mounting Hardware

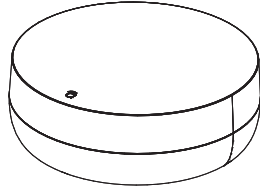


## Step 2: Install

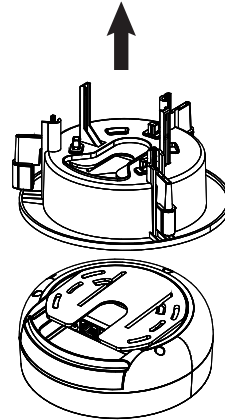
(A) Ceiling Mount



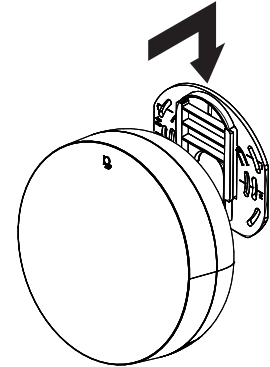
(B) Shelf Mount



(C) In-Ceiling Mount  
*Accessory not included*



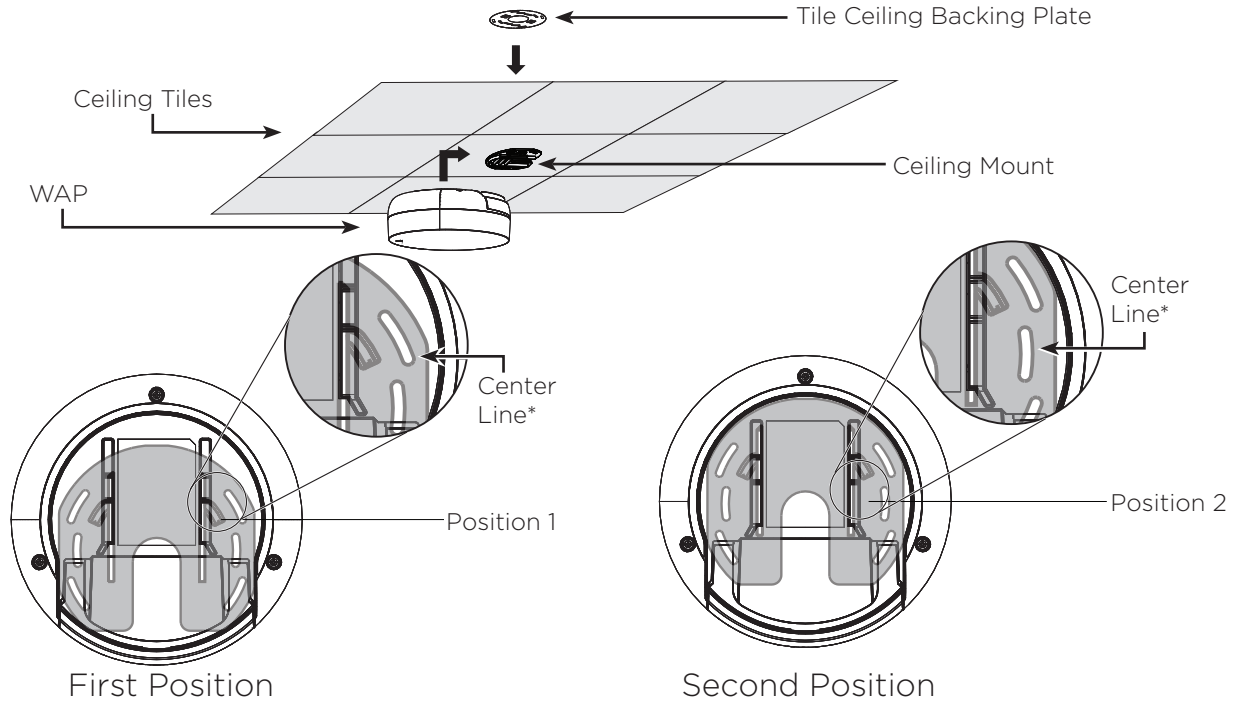
(D) Wall Mount



**NOTE:** Use the ceiling back plate on top of acoustic ceiling tiles to prevent the mounting nuts from pulling through.



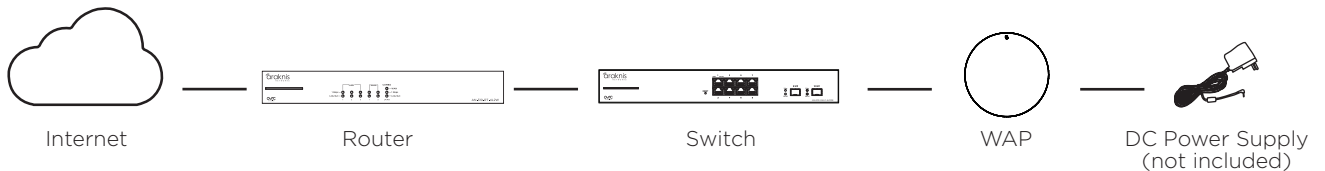
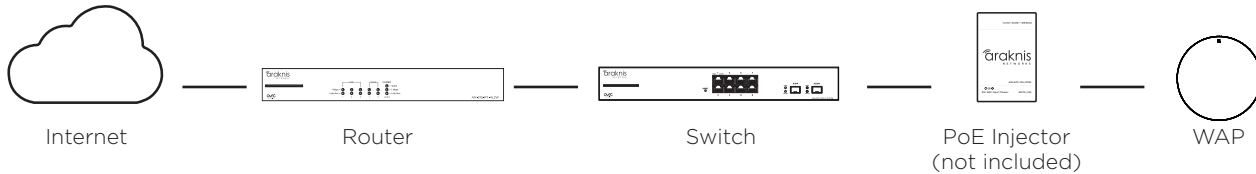
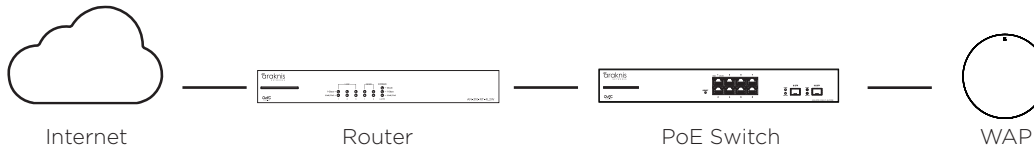
# Position the Ceiling Mount



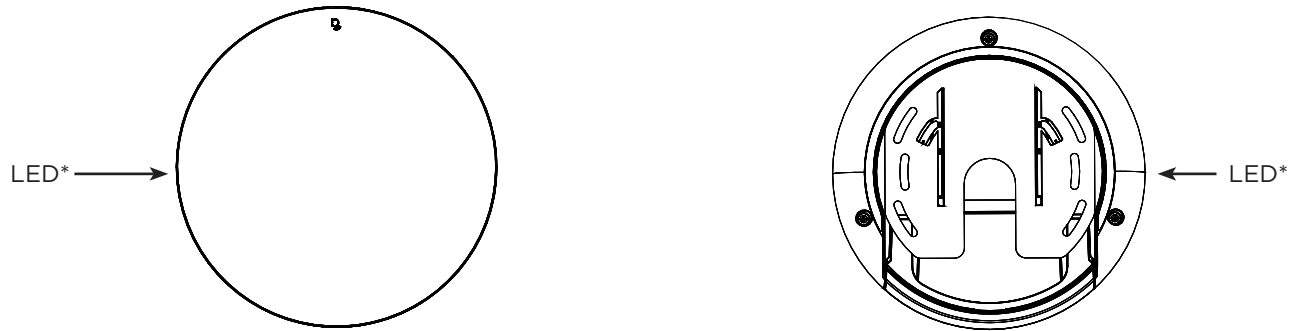
\* Center line of the bracket is not necessarily the center line of the WAP when installed. Please use the guide above to understand the center line of the WAP when installing the bracket.



## Step 3: Connect



## Step 4: Verify



**\*NOTE:** The LED is located on the side of the device.

### LED Status:

- Blinking White: Powering on.
- Solid White: Ready for setup.
- Solid Blue: Controller/Node connected to Internet.
- Blinking/Solid Red: Wireless backhaul lost or unit locked up.

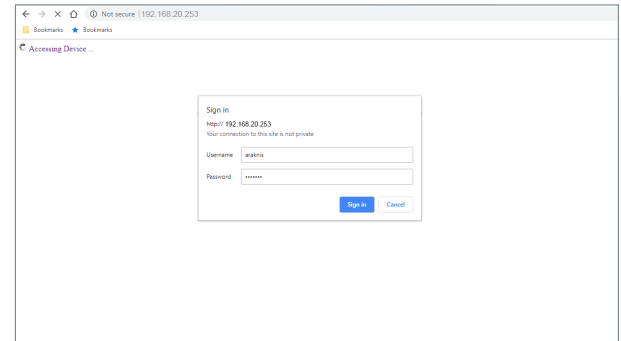
For a full list of LED behaviors, please see [link](#).



## Step 5: Log Into Web Interface

A Log in using the default credentials:

Username	araknis
Password	araknis



**NOTE:** If you can't connect to the WAP using this method, or need to configure the device before connecting it to the network, try these options for accessing your device:

- DHCP IP address – Page 15
- Default IP Address – Page 16
- OvrC – Page 19



# Pro Tip: Save and Apply Changes

After making changes to settings on a menu page, click the “Save” button on the menu to hold the new settings in the Apply Changes field.

**SYSTEM STATUS**

**System information**

System Name	AN-810-AP-LAC	
Service Tag	ST184300040WB411	
Firmware Version	2.0.01	
Management VLAN ID	Untagged	

**Wireless information**

	2.4GHz	5GHz
MAC Address	D4-6A-91-A9-B6-E2	D4-6A-91-A9-B6-E3
Number of Networks	1	1
Number of Connected Clients	1	0
Operation Mode	Access Point	Access Point
TX	3582964 Bytes	9041263 Bytes

After all desired changes have been made, click “Apply Changes” to review the new settings if any. Click “Apply” to make the changes or “Revert” to cancel the changes.

**APPLY CHANGES**

**Unsaved**

**Unsaved changes list**

0/100% (0/100%)

Apply Revert

**NOTE:** Settings will take affect after the progress bar completes 100%.



## Other Access Methods: DHCP IP Address

The WAP is configured to DHCP by default so that the DHCP server can assign an IP address when the WAP is connected to the network (the DHCP server is usually the router). This address can be used for accessing the web interface.

Check the client table on your router to find the IP address of the WAP.

Client Table						Show	All
Client Host Name	IP Address	MAC Address	Manufacturer				
ea3-000FFF9837C6	192.168.1.112	88:88:88:88:88:88	Control4				
Cube Cam	192.168.1.15	88:88:88:88:88:88	Snap AV				
AN-210-SW-16-POE	192.168.1.2	88:88:88:88:88:88	Snap AV				
LUM-510-NVR	192.168.1.50	88:88:88:88:88:88	Snap AV				
LUM-310 DVR	192.168.1.51	88:88:88:88:88:88	Snap AV				
<b>AN-510-AP-I-AC</b>	<b>192.168.1.5</b>	<b>88:88:88:88:88:88</b>	<b>Snap AV</b>	<b></b>	<b></b>	<b></b>	<b></b>
WB-800-IPVM-12	192.168.1.10	88:88:88:88:88:88	Snap AV				



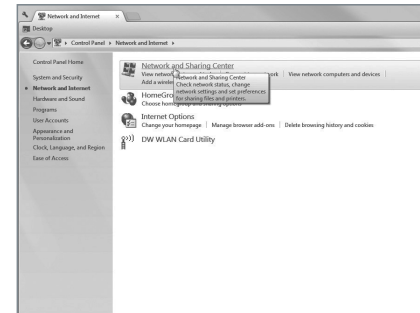
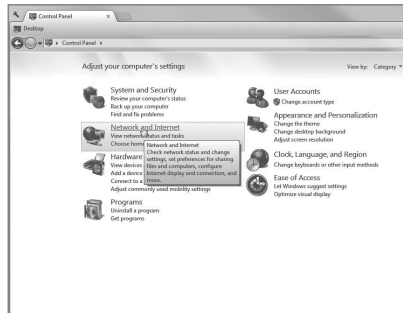
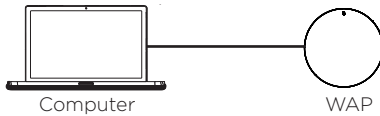


# Other Access Methods: Default IP Address

If the WAP is not issued an IP address on the network, or needs to be accessed while not connected to a network, you can configure your computer's network connection to allow access using the default IP address, "192.168.20.253".

*Windows 7 screenshots shown for reference.*

- (A) Connect your PC to the WAP using a network patch cable.
- (B) On your PC, open the Control Panel and left-click "Network and Internet".
- (C) Left-click "Network and Sharing Center".

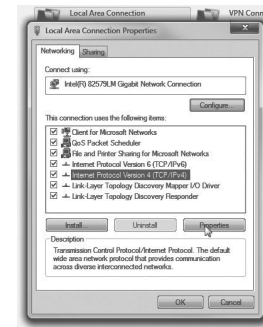
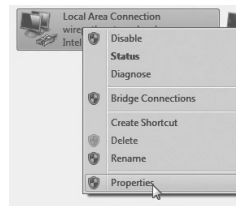
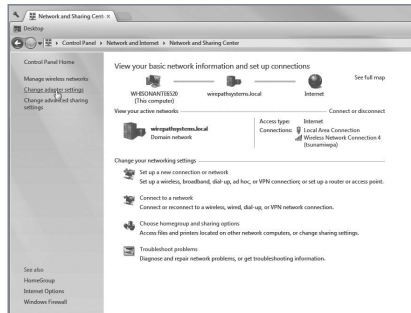




# Other Access Methods: Default IP Address

Windows 7 screenshots shown for reference.

- (D) In the left bar, left-click “Change adapter settings”.
- (E) Right-click the icon for the wired network connection and left-click “Properties”.
- (F) Left-click to highlight “Internet Protocol Version 4 (TCP/IPv4), then left-click “Properties”.





# Other Access Methods: Default IP Address

Windows 7 screenshots shown for reference.

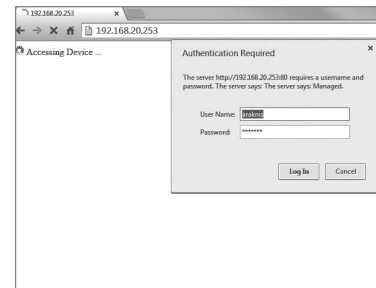
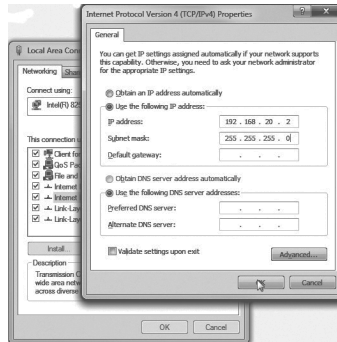
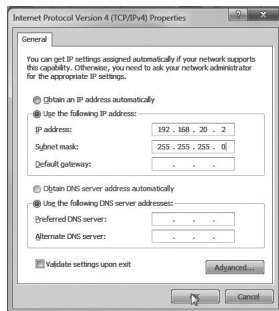
- Ⓒ In the “General” tab, left-click “Use the following IP address:” and enter the IP address and subnet mask.

IP Address	192.168.20.2
Subnet Mask	255.255.255.0

- Ⓓ Left-click “OK” to close Internet Protocol Version 4 (TCP/IPv4) Properties, then left-click “OK” to close wireless network connection properties.

- Ⓙ Open a browser and navigate to **http://192.168.20.253/**. Log in using the default credentials:

Username	araknis
Password	araknis

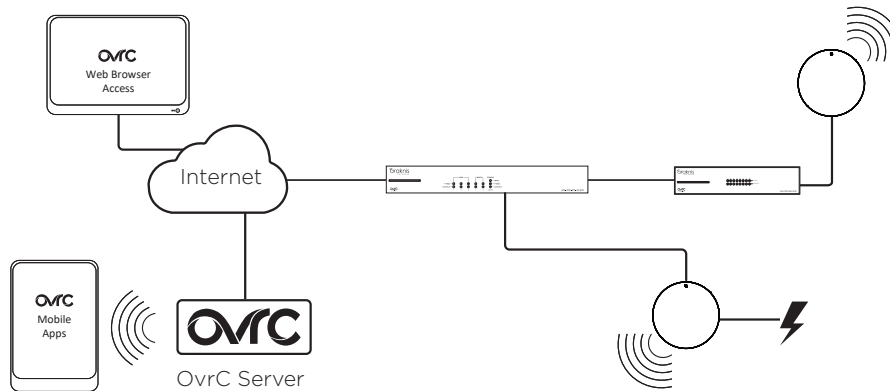




## Other Access Methods: OvrC

OvrC gives you remote device management, real-time notifications, and intuitive customer management, right from your computer or mobile device. Setup is plug-and-play, with no port forwarding or DDNS address required. To add this device to your OvrC account:

- (A) Connect the WAP to the Internet
- (B) Log Into OvrC ([www.ovrc.com](http://www.ovrc.com))
- (C) Add the Device (MAC address and Service Tag numbers needed for authentication)



# Contacting Technical Support

☎ (866) 838-5052

✉ techsupport@snapav.com

## 2-Year Limited Warranty

Find details of this product's 2-Year Limited Warranty at [snapav.com/warranty](https://snapav.com/warranty), or request a paper copy from Customer Service at (866) 424-4489. Find other legal resources, such as regulatory notices and patent information, at [snapav.com/legal](https://snapav.com/legal).

### US local representative information:

Company: Wirepath Home Systems LLC  
Address: 1800 Continental Blvd. Suite 200,  
Charlotte, NC 28273  
USA  
Tel: 704.927.7620  
Fax: 800.782.2410



Copyright ©2020, Wirepath Home Systems, LLC. All rights reserved. Control4 and Snap AV and their respective logos are registered trademarks or trademarks of Wirepath Home Systems, LLC, dba "Control4" and/or dba "SnapAV" in the United States and/or other countries. Snap AV, Araknis, and Wirepath are also registered trademarks or trademarks of Wirepath Home Systems, LLC. Other names and brands may be claimed as the property of their respective owners. All specifications subject to change without notice.