

FEATURES

- Up to 90° flexibility
- Dual band Frequency
- RoHs Compliant

APPLICATIONS

- Meters
- Routers
- Gateways

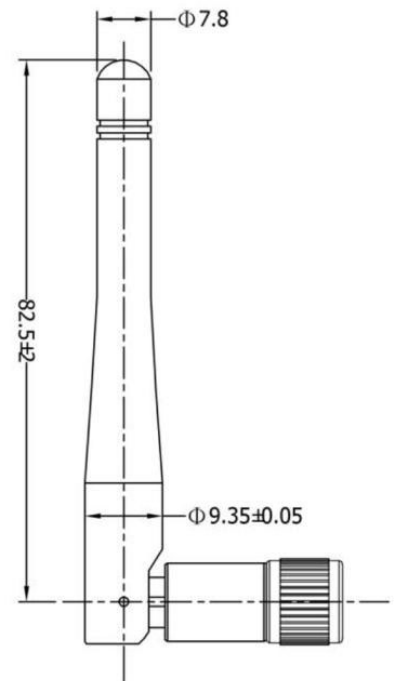
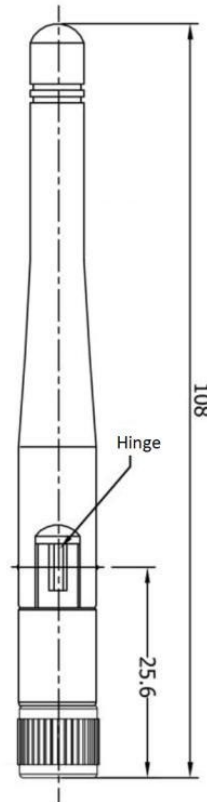


RoHS Compliant
includes all homogeneous materials
(see part numbering system for details)

SPECIFICATIONS

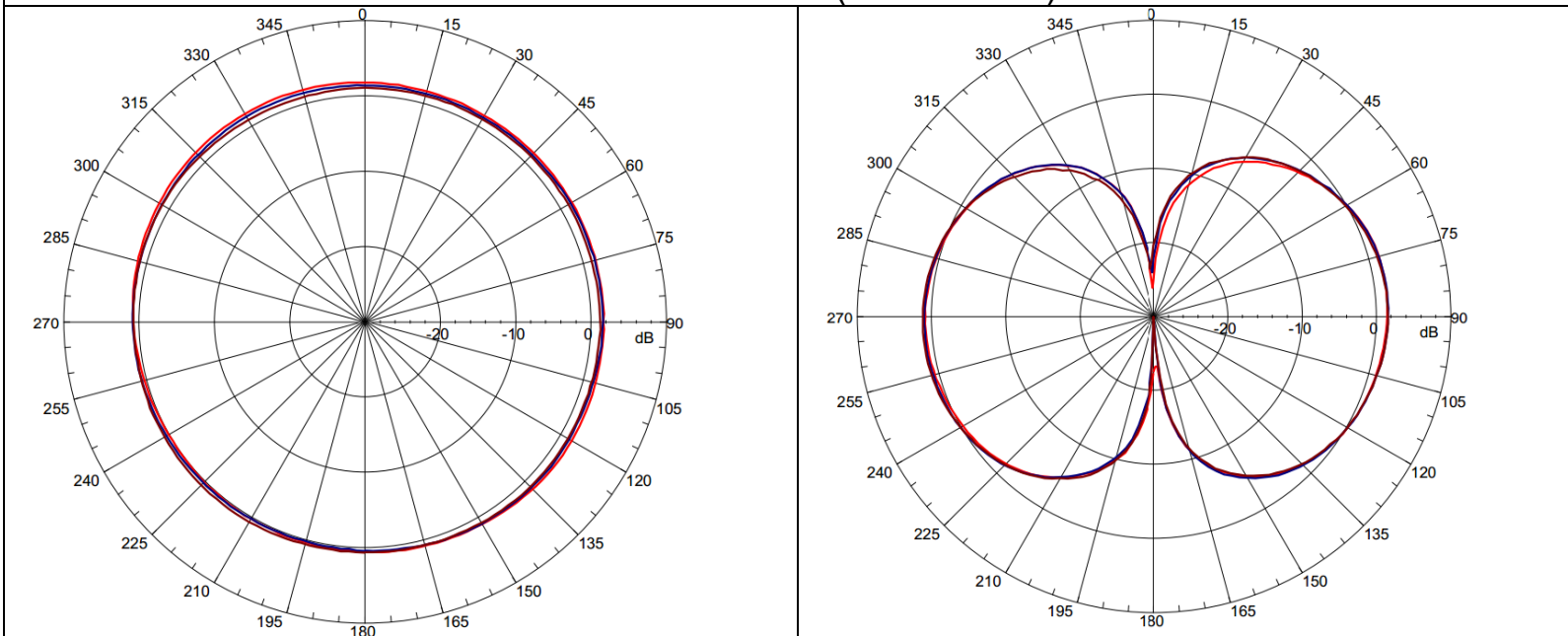
Electrical	
Frequency Range	2.4~2.5 GHz 4.9~5.82 GHz
Polarization	Linear
Gain	Max 2.7dBi @ 2.4~2.5 GHz Max 4.0dBi @ 4.9~5.825 GHz
V.S.W.R	<2.0
Impedance	50Ω
Dimensions (mm):	
Body Length	108.0
Diameter	9.35 ± 0.05
Connection Type	RP-SMA Male

NAN-E 108x9 B2 A R F
 F = RoHs compliant
 R = RP-SMA Connector
 A = Revision Code (See Page 5)
 B2 = 2 Band Frequencies
 108x9 = Size (108 mm x 9.35mm)
 NAN-E = Series

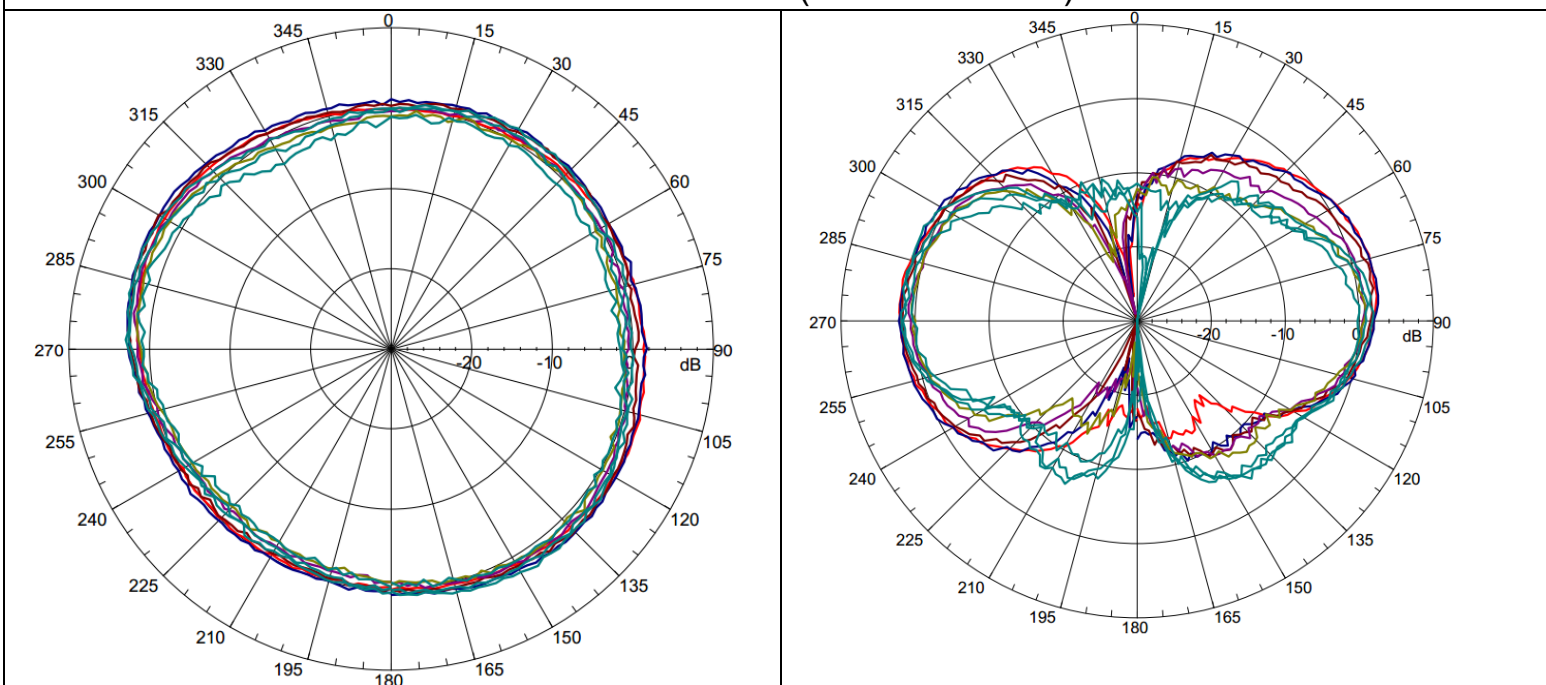


Environmental	
Operating Temperature	-40°C~+85°C
Vibration	10 ~ 55Hz with 1.5mm Amplitude 2 Hours
RoHS Compliant	Yes

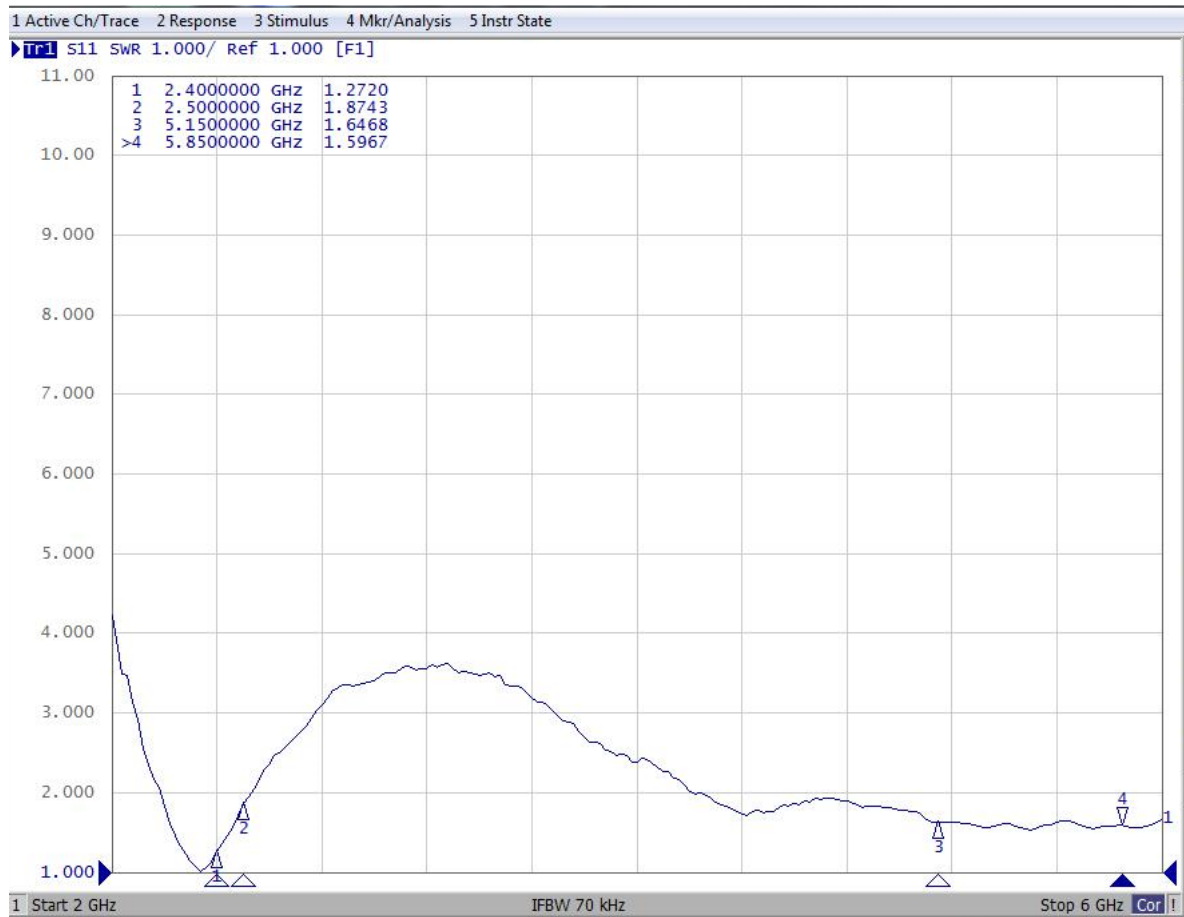
Radiation Patterns (2.4~2.5GHz)



Radiation Patterns (4.9~5.825 GHz)



VSWR



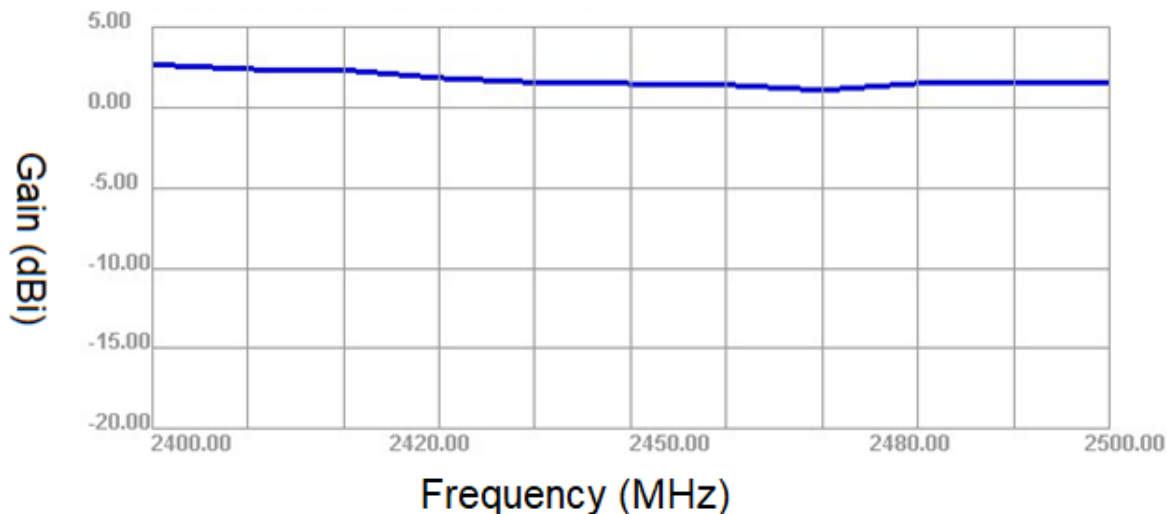
2400 - 2500 MHz

Passive Data

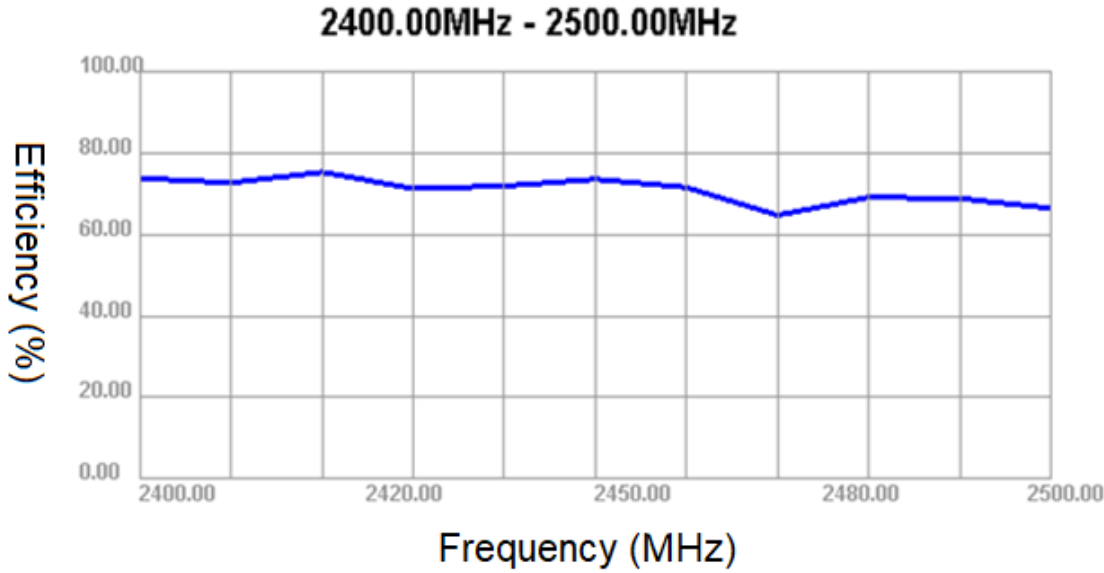
Freq (MHz)	Effi (%)	Effi (dB)	Gain (dBi)	Gain (dBd)	UHS (%)	DHS (%)	Max (dB)	Min (dB)	Directivity (dBi)	Beamwidth (3dB)	AttH (dB)	AttV (dB)
2400	73.8	-1.32	2.66	0.51	49.427	24.372	2.66	-11.31	3.98	15	46.78	46.66
2410	72.65	-1.39	2.37	0.22	47.702	24.948	2.37	-12.01	3.75	15	46.54	46.47
2420	75.27	-1.23	2.31	0.16	48.057	27.212	2.31	-12.44	3.55	15	46.78	46.77
2430	71.25	-1.47	1.82	-0.33	43.914	27.337	1.82	-13.39	3.29	15	46.65	46.52
2440	71.85	-1.44	1.55	-0.6	42.656	29.197	1.55	-14.18	2.99	30	46.79	46.73
2450	73.54	-1.33	1.47	-0.68	42.424	31.114	1.47	-15.24	2.81	15	46.92	46.83
2460	71.53	-1.45	1.39	-0.76	40.773	30.762	1.39	-16.62	2.85	30	47.02	46.93
2470	64.72	-1.89	1.06	-1.09	36.996	27.723	1.06	-18.31	2.95	30	46.82	46.7
2480	69.08	-1.61	1.49	-0.66	39.986	29.098	1.49	-19.4	3.1	30	47.15	47.03
2490	68.82	-1.62	1.58	-0.57	40.306	28.515	1.58	-20.08	3.21	30	47.25	47.04
2500	66.39	-1.78	1.48	-0.67	39.248	27.138	1.48	-20.46	3.26	30	47.08	46.9

Gain vs. Frequency

2400.00MHz - 2500.00MHz

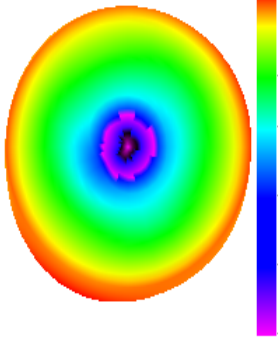


Efficiency vs Frequency

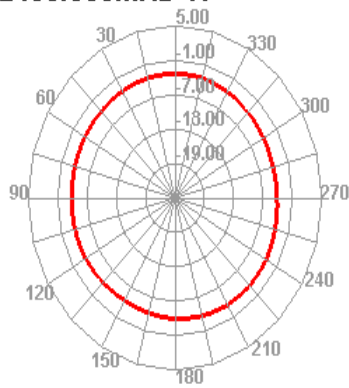


Radiation Patterns

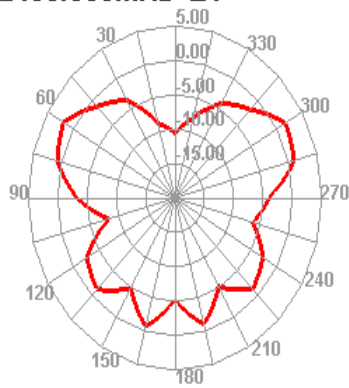
2400.000MHz



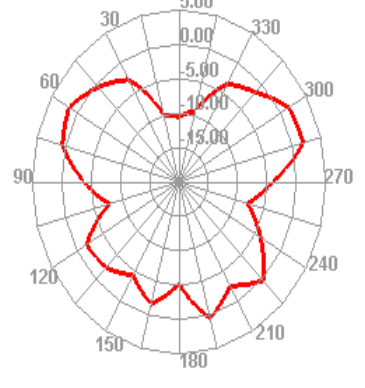
2400.000MHz H



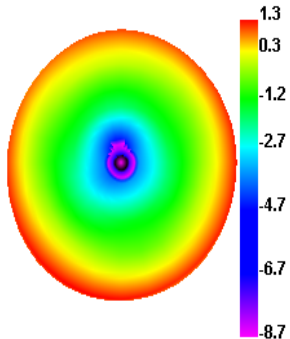
2400.000MHz E1



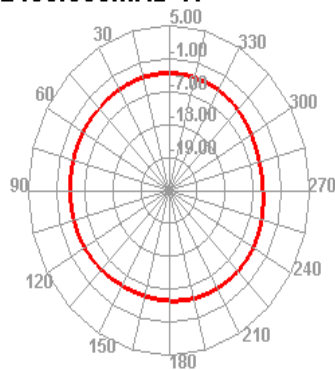
2400.000MHz E2



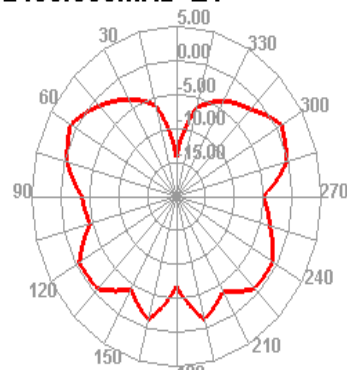
2450.000MHz



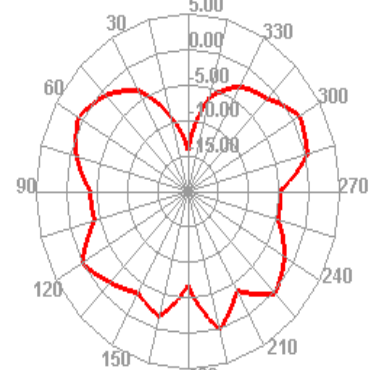
2450.000MHz H



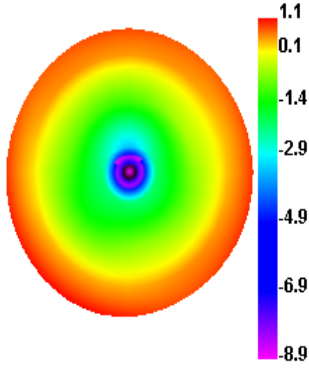
2450.000MHz E1



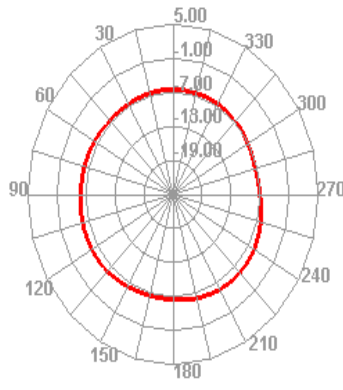
2450.000MHz E2



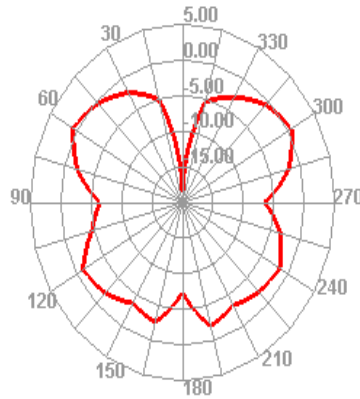
2500.000MHz



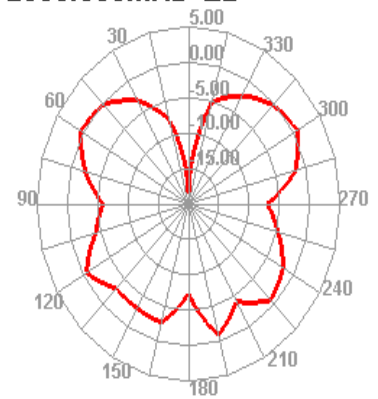
2500.000MHz H



2500.000MHz E1



2500.000MHz E2



4900 – 5825 MHz

Passive Data

Freq (MHz)	Effi (%)	Effi (dB)	Gain (dBi)	Gain (dBd)	UHS (%)	DHIS (%)	Max (dB)	Min (dB)	Directivity (dBi)	Beamwidth (3dB)	AttH (dB)	AttV (dB)
4900	68.31	-1.66	2.41	0.26	44.855	23.453	2.41	-23.27	4.06	30	51.87	51.94
4905	67.54	-1.7	2.36	0.21	43.938	23.602	2.36	-24.06	4.07	30	51.8	51.91
4910	61.43	-2.12	1.97	-0.18	39.578	21.853	1.97	-25.2	4.09	30	51.57	51.69
4915	63.2	-1.99	2.1	-0.05	40.342	22.853	2.1	-25.65	4.09	30	51.72	51.76
4920	59.68	-2.24	1.85	-0.3	37.762	21.914	1.85	-26.96	4.09	30	51.64	51.72
4925	57.88	-2.37	1.75	-0.4	36.316	21.567	1.75	-27.07	4.13	30	51.58	51.76
4930	65.98	-1.81	2.33	0.18	41.074	24.902	2.33	-27.26	4.14	30	51.9	52.03
4935	65.16	-1.86	2.35	0.2	40.272	24.887	2.35	-27.12	4.21	30	51.82	51.93
4940	57.7	-2.39	1.88	-0.27	35.419	22.285	1.88	-26.8	4.27	30	51.49	51.67
4945	60.4	-2.19	2.15	0	36.835	23.565	2.15	-26.13	4.34	30	51.71	51.85
4950	64.97	-1.87	2.56	0.41	39.397	25.568	2.56	-25.48	4.43	30	51.87	52.01
4955	65.39	-1.84	2.64	0.49	39.443	25.945	2.64	-24.75	4.48	30	51.73	51.98
4960	64.03	-1.94	2.6	0.45	38.427	25.601	2.6	-24.42	4.54	30	51.76	51.93
4965	62.1	-2.07	2.54	0.39	37.12	24.983	2.54	-23.77	4.6	30	51.89	52.01
4970	64.94	-1.88	2.79	0.64	38.673	26.263	2.79	-23.48	4.66	30	51.93	52.18
4975	63.2	-1.99	2.68	0.53	37.525	25.675	2.68	-23.05	4.67	30	51.72	52.03
4980	57.64	-2.39	2.3	0.15	34.132	23.508	2.3	-23.09	4.7	30	51.64	51.87
4985	64.43	-1.91	2.8	0.65	38.093	26.337	2.8	-22.56	4.71	30	52.07	52.25
4990	69.38	-1.59	3.11	0.96	40.959	28.42	3.11	-21.89	4.69	30	52.18	52.41
4995	62.68	-2.03	2.66	0.51	36.979	25.703	2.66	-21.74	4.69	30	51.87	52.18
5000	67.6	-1.7	2.95	0.8	39.858	27.742	2.95	-21.11	4.66	30	52.14	52.37
5005	71.9	-1.43	3.21	1.06	42.407	29.488	3.21	-20.3	4.64	30	52.38	52.54

5010	62.92	-2.01	2.64	0.49	37.142	25.779	2.64	-20.11	4.65	30	52.06	52.32
5015	69.12	-1.6	3.06	0.91	40.869	28.255	3.06	-19.62	4.66	30	52.4	52.65
5020	75.97	-1.19	3.46	1.31	45.04	30.935	3.46	-18.81	4.65	30	52.85	52.98
5025	60.47	-2.18	2.49	0.34	35.963	24.512	2.49	-19.31	4.67	30	52.3	52.56
5030	59.43	-2.26	2.43	0.28	35.454	23.972	2.43	-18.58	4.69	30	52.22	52.5
5035	71.52	-1.46	3.23	1.08	42.837	28.68	3.23	-17.37	4.68	30	52.77	52.85
5040	64.96	-1.87	2.82	0.67	39.056	25.901	2.82	-17.15	4.69	30	52.42	52.6
5045	59.67	-2.24	2.46	0.31	35.974	23.691	2.46	-17.01	4.71	30	52.05	52.38
5050	68.05	-1.67	3.03	0.88	41.152	26.901	3.03	-16.13	4.7	30	52.5	52.61
5055	66.78	-1.75	2.92	0.77	40.531	26.248	2.92	-15.7	4.67	30	52.42	52.48
5060	61.99	-2.08	2.59	0.44	37.728	24.265	2.59	-16.99	4.66	30	51.96	52.17
5065	65.65	-1.83	2.78	0.63	40.079	25.569	2.78	-18.31	4.61	30	52.09	52.29
5070	65.18	-1.86	2.66	0.51	39.939	25.238	2.66	-20.03	4.52	30	52.12	52.27
5075	61.37	-2.12	2.32	0.17	37.727	23.643	2.32	-22.63	4.44	30	51.91	52.1
5080	61.49	-2.11	2.22	0.07	37.904	23.589	2.22	-24.74	4.34	30	51.93	52.07
5085	63.11	-2	2.24	0.09	39.014	24.099	2.24	-26.49	4.23	30	52	52.14
5090	62.82	-2.02	2.12	-0.03	38.898	23.92	2.12	-25.89	4.14	30	51.98	52.15
5095	61.15	-2.14	1.9	-0.25	37.895	23.259	1.9	-24.83	4.04	30	51.99	52.07
5100	65.8	-1.82	2.16	0.01	40.782	25.019	2.16	-23.33	3.98	30	52.23	52.3
5105	70.9	-1.49	2.51	0.36	43.87	27.025	2.51	-21.84	4.01	30	52.53	52.57
5110	64.45	-1.91	2.11	-0.04	39.754	24.692	2.11	-21.47	4.01	30	52.39	52.37
5115	60.05	-2.21	1.78	-0.37	36.884	23.165	1.78	-21.18	3.99	30	52.04	52.12
5120	67.47	-1.71	2.28	0.13	41.171	26.295	2.28	-19.61	3.99	45	52.33	52.44
5125	67.21	-1.73	2.23	0.08	40.745	26.469	2.23	-19.71	3.96	45	52.62	52.57
5130	61.01	-2.15	1.77	-0.38	36.737	24.27	1.77	-20.43	3.91	45	52.29	52.29
5135	66.05	-1.8	2.06	-0.09	39.466	26.58	2.06	-20.17	3.86	45	52.23	52.28
5140	66.22	-1.79	2	-0.15	39.267	26.957	2	-20	3.79	30	52.33	52.33
5145	58.35	-2.34	1.4	-0.75	34.352	23.994	1.4	-20.57	3.74	30	52.13	52.12
5150	64.69	-1.89	1.86	-0.29	37.825	26.863	1.86	-19.45	3.75	30	52.43	52.34
5155	69.25	-1.6	2.16	0.01	40.245	29.006	2.16	-18.5	3.76	30	52.61	52.51
5160	59.82	-2.23	1.56	-0.59	34.533	25.283	1.56	-18.38	3.79	30	52.12	52.18
5165	62.64	-2.03	1.82	-0.33	35.944	26.698	1.82	-17.66	3.85	30	52.23	52.25
5170	69.78	-1.56	2.3	0.15	39.861	29.919	2.3	-17.32	3.86	30	52.6	52.46
5175	62.55	-2.04	1.9	-0.25	35.596	26.955	1.9	-18.76	3.94	30	52.18	52.19
5180	60.97	-2.15	1.82	-0.33	34.572	26.394	1.82	-19.08	3.97	30	52.05	52.05
5185	67.07	-1.73	2.27	0.12	37.965	29.106	2.27	-19.01	4.01	30	52.45	52.28
5190	64.17	-1.93	2.14	-0.01	36.262	27.907	2.14	-19.33	4.06	30	52.18	52.17
5195	60.82	-2.16	1.92	-0.23	34.287	26.53	1.92	-19.27	4.08	30	52.04	52.03
5200	62.44	-2.05	2.06	-0.09	35.135	27.309	2.06	-18.5	4.11	30	52.5	52.27
5205	66.36	-1.78	2.31	0.16	37.248	29.117	2.31	-18.11	4.09	30	52.56	52.49

5210	70.2	-1.54	2.53	0.38	39.262	30.934	2.53	-17.1	4.06	30	52.27	52.38
5215	68.35	-1.65	2.38	0.23	38.089	30.262	2.38	-16.59	4.03	30	52.34	52.24
5220	66.94	-1.74	2.24	0.09	37.19	29.75	2.24	-16.2	3.98	30	52.4	52.27
5225	69.83	-1.56	2.37	0.22	38.672	31.153	2.37	-16.45	3.93	30	52.28	52.3
5230	69.08	-1.61	2.26	0.11	38.167	30.912	2.26	-16.94	3.87	30	52.24	52.27
5235	68.86	-1.62	2.2	0.05	37.993	30.866	2.2	-17.23	3.82	30	52.27	52.26
5240	72.22	-1.41	2.36	0.21	39.833	32.39	2.36	-17.32	3.77	30	52.38	52.3
5245	67.35	-1.72	1.99	-0.16	37.169	30.184	1.99	-17.69	3.71	30	52.33	52.26
5250	66.26	-1.79	1.87	-0.28	36.621	29.638	1.87	-17.95	3.65	30	52.27	52.3
5255	73.94	-1.31	2.31	0.16	40.935	33.004	2.31	-17.51	3.62	30	52.5	52.48
5260	73.29	-1.35	2.24	0.09	40.666	32.628	2.24	-17.44	3.59	30	52.58	52.56
5265	71.58	-1.45	2.08	-0.07	39.812	31.769	2.08	-17.2	3.53	30	52.47	52.59
5270	77.83	-1.09	2.42	0.27	43.423	34.409	2.42	-16.51	3.51	30	52.68	52.73
5275	79.06	-1.02	2.48	0.33	44.263	34.793	2.48	-16.49	3.5	30	52.86	52.86
5280	75.87	-1.2	2.4	0.25	42.641	33.23	2.4	-16.47	3.59	30	52.54	52.75
5285	77.91	-1.08	2.59	0.44	43.942	33.965	2.59	-16.22	3.67	30	52.55	52.67
5290	76.87	-1.14	2.61	0.46	43.532	33.336	2.61	-16.06	3.75	30	52.86	52.77
5295	77.61	-1.1	2.73	0.58	44.101	33.511	2.73	-15.86	3.83	30	52.79	52.9
5300	79.61	-0.99	2.9	0.75	45.316	34.289	2.9	-15.75	3.89	30	52.57	52.74
5305	76.02	-1.19	2.76	0.61	43.363	32.653	2.76	-15.74	3.95	30	52.57	52.61
5310	77.18	-1.13	2.88	0.73	44.072	33.105	2.88	-15.59	4	30	52.64	52.76
5315	83.38	-0.79	3.24	1.09	47.645	35.732	3.24	-15.12	4.03	30	52.86	53
5320	82.61	-0.83	3.24	1.09	47.264	35.347	3.24	-15.26	4.07	30	53.01	53.1
5325	82.75	-0.82	3.29	1.14	47.397	35.351	3.29	-15.24	4.11	30	52.89	53.15
5330	83.19	-0.8	3.36	1.21	47.702	35.49	3.36	-15.27	4.16	30	52.84	53.07
5335	79.51	-1	3.2	1.05	45.678	33.832	3.2	-15.45	4.19	30	52.92	52.98
5340	82.55	-0.83	3.39	1.24	47.511	35.038	3.39	-15.36	4.23	30	52.93	53.13
5345	85.79	-0.67	3.57	1.42	49.448	36.343	3.57	-15.84	4.24	30	53.03	53.24
5350	80.71	-0.93	3.32	1.17	46.621	34.085	3.32	-16.89	4.25	30	53.1	53.18
5355	80.49	-0.94	3.31	1.16	46.637	33.857	3.31	-17.55	4.25	30	52.95	53.18
5360	84.28	-0.74	3.5	1.35	48.935	35.343	3.5	-17.79	4.24	30	53.07	53.26
5365	80.5	-0.94	3.26	1.11	46.892	33.606	3.26	-18.32	4.2	30	53.2	53.23
5370	80.64	-0.93	3.25	1.1	47.162	33.476	3.25	-18.09	4.19	30	53.05	53.27
5375	84	-0.76	3.37	1.22	49.285	34.712	3.37	-17.38	4.13	30	53.05	53.32
5380	80.93	-0.92	3.19	1.04	47.683	33.245	3.19	-16.91	4.11	30	53.13	53.16
5385	77.58	-1.1	2.96	0.81	45.87	31.707	2.96	-16.5	4.07	30	52.89	52.95
5390	75.88	-1.2	2.81	0.66	44.977	30.902	2.81	-16.58	4.01	30	52.63	52.77
5395	82.63	-0.83	3.11	0.96	49.052	33.577	3.11	-15.85	3.94	30	53.08	53.22
5400	89.79	-0.47	3.37	1.22	53.348	36.443	3.37	-15.22	3.84	30	53.43	53.58
5405	88.9	-0.51	3.24	1.09	52.826	36.074	3.24	-14.75	3.75	30	53.47	53.53

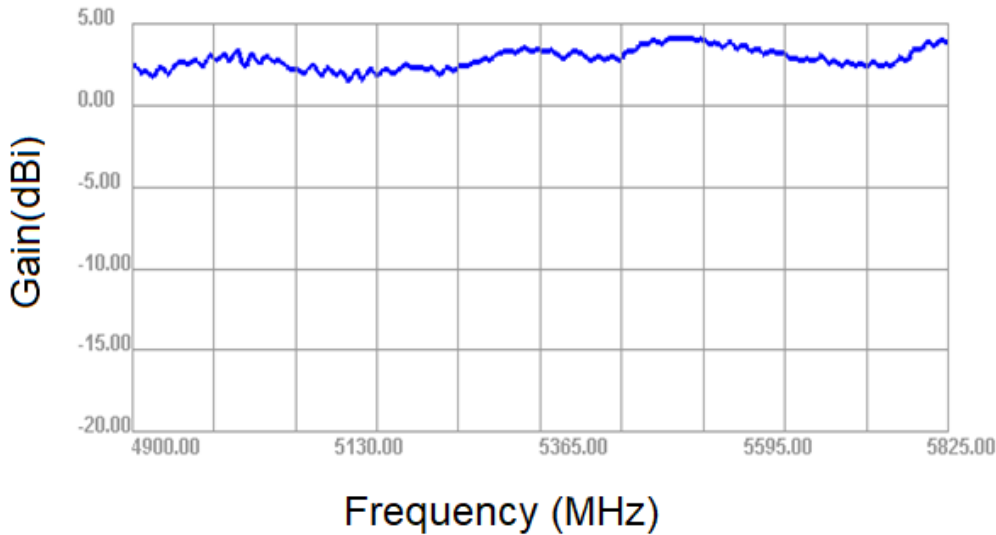
5410	88.48	-0.53	3.14	0.99	52.555	35.927	3.14	-14.2	3.67	30	53.54	53.62
5415	86.75	-0.62	2.93	0.78	51.469	35.283	2.93	-13.75	3.55	30	53.41	53.61
5420	83.8	-0.77	2.71	0.56	49.638	34.167	2.71	-13.78	3.48	30	53.45	53.52
5425	85.14	-0.7	2.89	0.74	50.441	34.704	2.89	-14.16	3.59	30	53.59	53.63
5430	85.28	-0.69	3	0.85	50.524	34.76	3	-14.3	3.69	30	53.6	53.75
5435	80.04	-0.97	2.8	0.65	47.499	32.543	2.8	-14.76	3.77	30	53.77	53.72
5440	80.38	-0.95	2.88	0.73	47.845	32.532	2.88	-14.97	3.83	30	53.9	53.8
5445	83.18	-0.8	3.05	0.9	49.689	33.488	3.05	-14.84	3.85	30	53.81	53.98
5450	77.67	-1.1	2.77	0.62	46.585	31.082	2.77	-14.8	3.87	30	53.96	53.96
5455	78.59	-1.05	2.81	0.66	47.43	31.165	2.81	-14.73	3.85	30	54.29	54.11
5460	85.87	-0.66	3.34	1.19	52.11	33.764	3.34	-14.39	4.01	30	54.16	54.21
5465	82.13	-0.86	3.3	1.15	50.089	32.036	3.3	-15.1	4.16	30	53.88	53.95
5470	79.01	-1.02	3.28	1.13	48.48	30.534	3.28	-15.49	4.31	30	53.92	53.79
5475	84	-0.76	3.7	1.55	51.836	32.165	3.7	-15.29	4.46	30	53.94	53.91
5480	81.68	-0.88	3.73	1.58	50.673	31.005	3.73	-15.17	4.61	30	53.84	53.78
5485	79.17	-1.01	3.7	1.55	49.407	29.759	3.7	-15.95	4.72	30	53.87	53.75
5490	82.12	-0.86	3.98	1.83	51.527	30.595	3.98	-16.53	4.84	30	53.87	53.89
5495	79.37	-1	3.91	1.76	50.074	29.294	3.91	-17.26	4.91	30	53.89	53.86
5500	75.28	-1.23	3.75	1.6	47.787	27.491	3.75	-18.4	4.98	30	53.87	53.76
5505	78.49	-1.05	3.96	1.81	50.099	28.393	3.96	-19.26	5.01	30	53.74	53.76
5510	80.24	-0.96	4.09	1.94	51.46	28.778	4.09	-19.78	5.04	30	53.73	53.72
5515	79.34	-1	4.05	1.9	51.159	28.185	4.05	-20.56	5.06	30	53.75	53.73
5520	80.18	-0.96	4.1	1.95	51.955	28.227	4.1	-20.65	5.06	30	53.63	53.68
5525	80.78	-0.93	4.13	1.98	52.611	28.165	4.13	-20.36	5.06	30	53.78	53.72
5530	81.41	-0.89	4.14	1.99	53.364	28.045	4.14	-19.92	5.03	30	53.99	53.91
5535	80.65	-0.93	4.07	1.92	53.164	27.482	4.07	-19.28	5	30	53.78	53.85
5540	79.6	-0.99	3.99	1.84	52.828	26.777	3.99	-18.78	4.98	30	53.7	53.69
5545	81.45	-0.89	4.06	1.91	54.447	27.004	4.06	-17.88	4.95	30	53.94	53.88
5550	80.15	-0.96	3.92	1.77	53.962	26.193	3.92	-17.12	4.88	30	53.94	53.98
5555	77.35	-1.12	3.72	1.57	52.469	24.881	3.72	-16.37	4.83	30	53.85	53.85
5560	80.9	-0.92	3.85	1.7	55.288	25.613	3.85	-16.29	4.77	30	53.96	54.02
5565	79.74	-0.98	3.72	1.57	54.835	24.901	3.72	-15.94	4.7	30	53.93	54.03
5570	76.93	-1.14	3.49	1.34	53.238	23.693	3.49	-15.73	4.63	30	54.05	53.98
5575	83.26	-0.8	3.88	1.73	57.934	25.321	3.88	-15.18	4.68	30	54.47	54.49
5580	80.82	-0.93	3.8	1.65	56.447	24.368	3.8	-15.35	4.72	30	54.53	54.71
5585	72.9	-1.37	3.41	1.26	51.097	21.804	3.41	-15.88	4.78	15	54.31	54.31
5590	76.47	-1.16	3.64	1.49	53.83	22.645	3.64	-15.46	4.81	15	54.27	54.3
5595	77.37	-1.11	3.73	1.58	54.6	22.773	3.73	-15.35	4.84	15	54.35	54.54
5600	69.3	-1.59	3.25	1.1	49.057	20.238	3.25	-16.14	4.84	15	54.33	54.33
5605	71.14	-1.48	3.4	1.25	50.558	20.587	3.4	-16.35	4.88	15	54.3	54.36

5610	72.68	-1.39	3.5	1.35	51.76	20.921	3.5	-16.34	4.88	15	54.14	54.42
5615	66.49	-1.77	3.11	0.96	47.453	19.035	3.11	-16.69	4.89	15	54.03	54.09
5620	67.93	-1.68	3.21	1.06	48.677	19.256	3.21	-16.81	4.89	15	54.12	54.07
5625	70.55	-1.51	3.35	1.2	50.638	19.913	3.35	-17.08	4.87	15	54.01	54.2
5630	67.89	-1.68	3.16	1.01	48.782	19.109	3.16	-17.67	4.84	15	53.81	53.96
5635	69.33	-1.59	3.23	1.08	49.94	19.386	3.23	-18.3	4.82	15	53.89	53.89
5640	68.75	-1.63	3.18	1.03	49.594	19.154	3.18	-18.89	4.8	15	53.97	54.06
5645	65.09	-1.86	2.89	0.74	46.963	18.127	2.89	-19.45	4.76	15	53.95	54.03
5650	65.27	-1.85	2.87	0.72	47.165	18.105	2.87	-19.24	4.73	15	53.97	54.04
5655	64.25	-1.92	2.8	0.65	46.441	17.81	2.8	-19.1	4.72	15	53.96	54.12
5660	62.92	-2.01	2.73	0.58	45.483	17.436	2.73	-18.56	4.74	15	53.91	53.96
5665	64.43	-1.91	2.84	0.69	46.607	17.818	2.84	-17.89	4.75	15	53.93	53.97
5670	62.49	-2.04	2.7	0.55	45.202	17.292	2.7	-17.21	4.74	15	53.95	54.04
5675	63.08	-2	2.74	0.59	45.619	17.459	2.74	-16.44	4.75	15	54.01	54.03
5680	68.42	-1.65	3.07	0.92	49.476	18.94	3.07	-15.66	4.72	15	54.11	54.19
5685	65	-1.87	2.82	0.67	46.965	18.038	2.82	-15.49	4.69	15	54.1	54.23
5690	61.19	-2.13	2.55	0.4	44.22	16.975	2.55	-15.46	4.68	15	54.12	54.05
5695	64.09	-1.93	2.71	0.56	46.346	17.741	2.71	-14.76	4.64	15	54.15	54.19
5700	62.38	-2.05	2.58	0.43	45.052	17.326	2.58	-14.68	4.63	15	54.07	54.28
5705	60.12	-2.21	2.43	0.28	43.411	16.707	2.43	-14.68	4.64	15	54.07	54.05
5710	62.89	-2.01	2.64	0.49	45.418	17.467	2.64	-14.94	4.65	15	54.1	54.06
5715	61.93	-2.08	2.55	0.4	44.687	17.246	2.55	-14.94	4.63	15	54.07	54.16
5720	60.64	-2.17	2.44	0.29	43.69	16.948	2.44	-14.96	4.61	15	54.12	54.09
5725	63.5	-1.97	2.58	0.43	45.733	17.766	2.58	-14.61	4.55	15	54.22	54.22
5730	62.6	-2.03	2.45	0.3	44.977	17.624	2.45	-14.17	4.48	15	54.19	54.3
5735	63.04	-2	2.46	0.31	45.234	17.803	2.46	-13.54	4.47	15	54.31	54.21
5740	66.46	-1.77	2.67	0.52	47.663	18.793	2.67	-13.04	4.44	15	54.46	54.39
5745	63.83	-1.95	2.43	0.28	45.673	18.16	2.43	-13.74	4.38	0	54.34	54.46
5750	62.11	-2.07	2.4	0.25	44.348	17.763	2.4	-14.07	4.47	0	54.33	54.22
5755	61.86	-2.09	2.55	0.4	44.179	17.678	2.55	-14.2	4.63	0	54.4	54.23
5760	58.3	-2.34	2.38	0.23	41.526	16.771	2.38	-14.18	4.72	0	54.29	54.29
5765	60.42	-2.19	2.59	0.44	42.956	17.462	2.59	-13.52	4.78	0	54.38	54.23
5770	64.64	-1.89	2.96	0.81	45.925	18.715	2.96	-13.15	4.86	0	54.53	54.36
5775	59.07	-2.29	2.7	0.55	41.843	17.23	2.7	-13.78	4.99	0	54.42	54.45
5780	58.99	-2.29	2.78	0.63	41.688	17.306	2.78	-14.8	5.07	0	54.48	54.35
5785	66.87	-1.75	3.45	1.3	47.156	19.713	3.45	-15.23	5.19	0	54.65	54.39
5790	64.87	-1.88	3.4	1.25	45.634	19.239	3.4	-16.43	5.28	0	54.4	54.34
5795	63.7	-1.96	3.4	1.25	44.65	19.048	3.4	-17.26	5.36	0	54.28	54.21
5800	70.79	-1.5	3.9	1.75	49.498	21.288	3.9	-17.49	5.4	0	54.54	54.37
5805	67.8	-1.69	3.79	1.64	47.304	20.499	3.79	-18.12	5.48	0	54.52	54.36

5810	64.33	-1.92	3.6	1.45	44.753	19.581	3.6	-18.43	5.51	0	54.38	54.21
5815	70.72	-1.5	4.04	1.89	49.038	21.683	4.04	-17.5	5.55	0	54.5	54.38
5820	69.37	-1.59	3.97	1.82	47.955	21.412	3.97	-17.02	5.56	0	54.57	54.44
5825	65.29	-1.85	3.75	1.6	44.99	20.3	3.75	-16.22	5.6	0	54.54	54.29

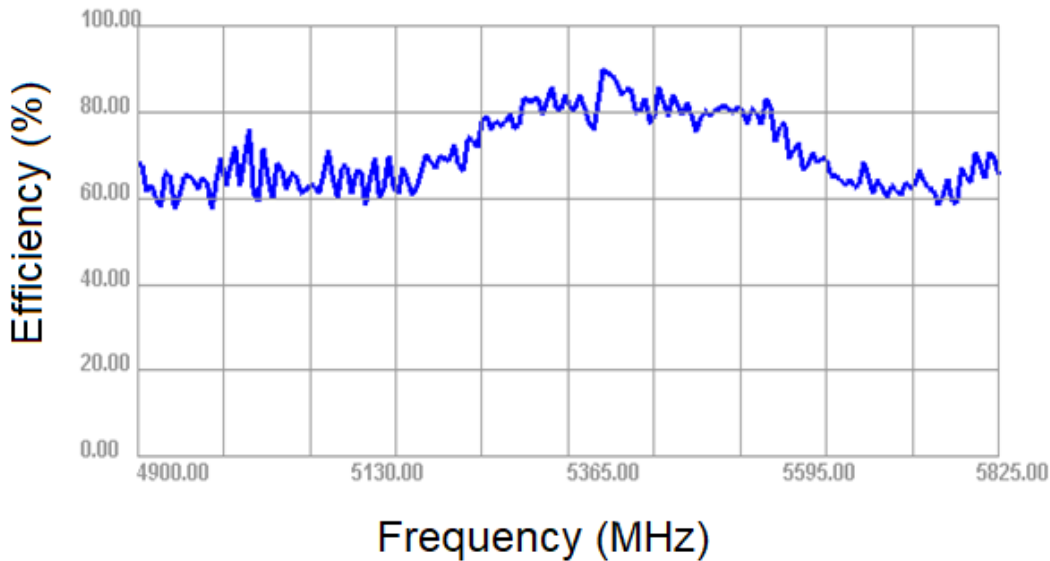
Gain vs Frequency

4900.00MHz - 5825.00MHz



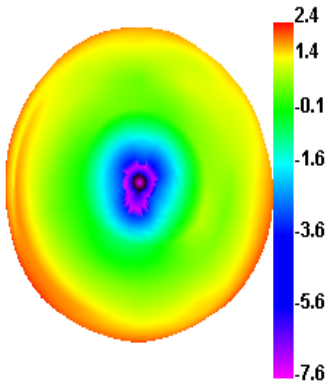
Efficiency vs Frequency

4900.00MHz - 5825.00MHz

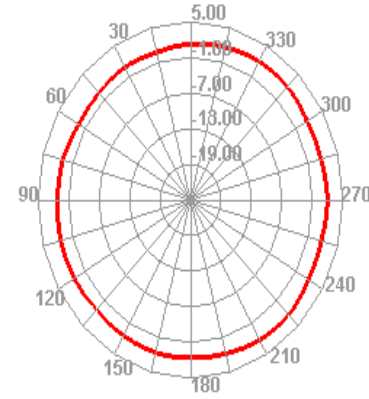


Radiation Patterns

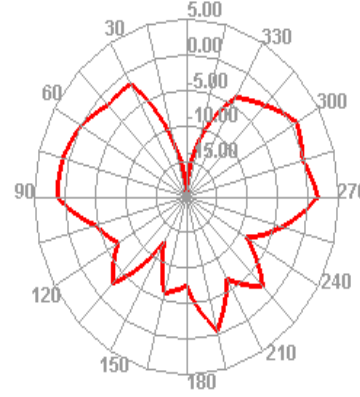
4900.000MHz



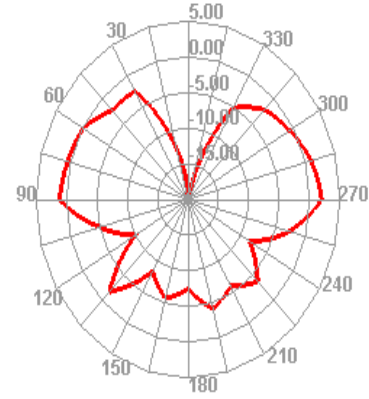
4900.000MHz H



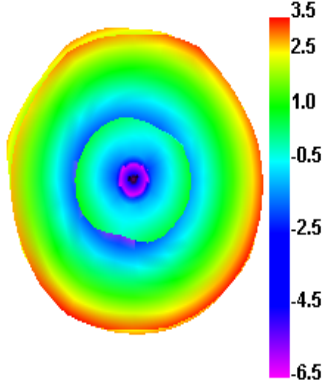
4900.000MHz E1



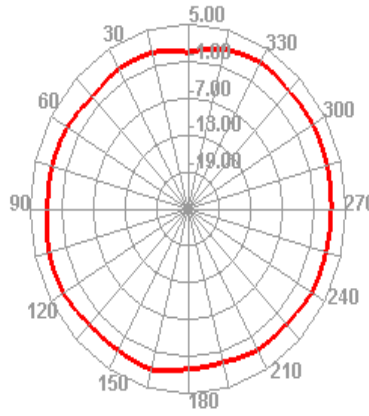
4900.000MHz E2



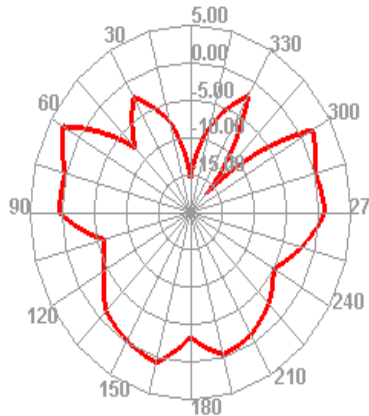
5360.000MHz



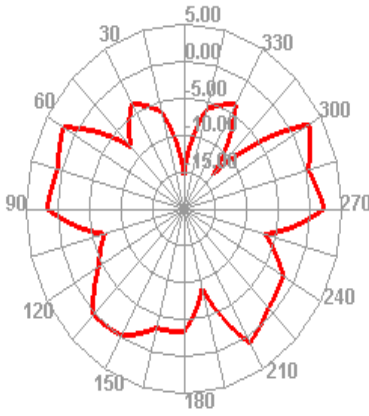
5360.000MHz H



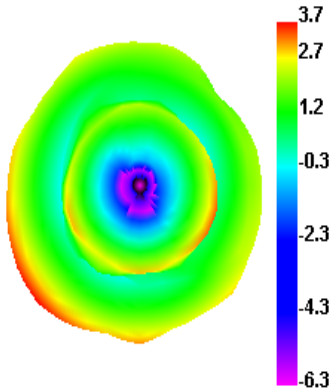
5360.000MHz E1



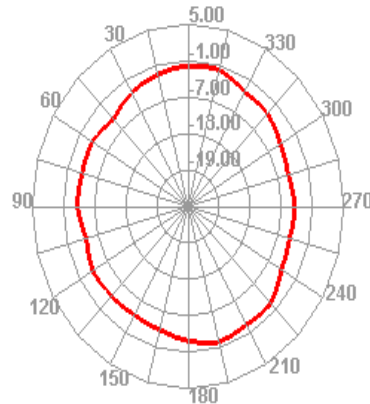
5360.000MHz E2



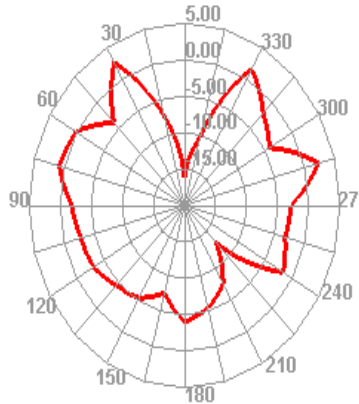
5825.000MHz



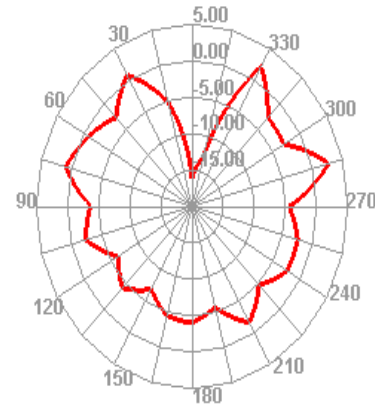
5825.000MHz H



5825.000MHz E1



5825.000MHz E2



Revision History and Status

Revision	Date Issued	Details	Status
A	Dec 17 th , 2020	Initial Release (Updated)	Supported

- NIC Technical Support: tpmg@niccomp.com
- Compliance Support: rohs@niccomp.com