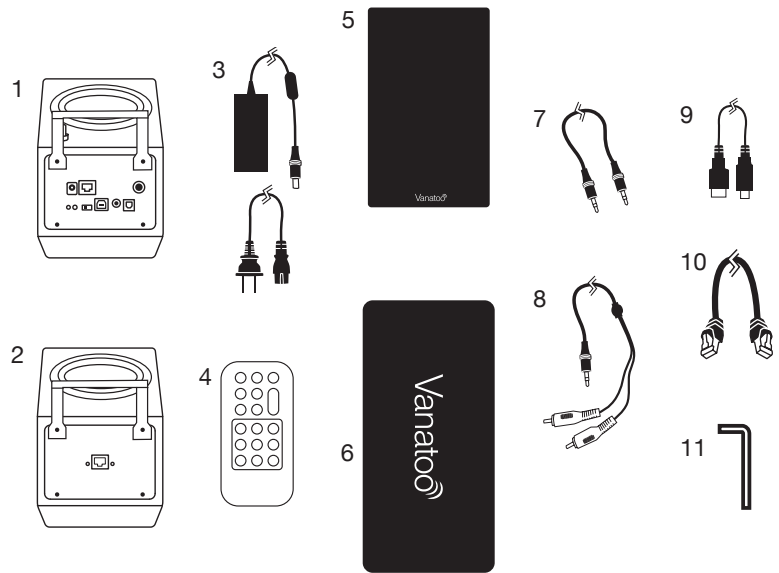


# Quick Start Guide

## 1 Unpack Your System

- |                           |                                     |
|---------------------------|-------------------------------------|
| 1) Active speaker         | 8) 3.5mm to RCA “Y” cable           |
| 2) Passive speaker        | 9) USB A to USB B cable             |
| 3) AC power adapter       | 10) RJ50 speaker interconnect cable |
| 4) IR remote control      | 11) 2.5mm Allen wrench              |
| 5) Pair of speaker grills | 12) This Quick Start Guide          |
| 6) Pair of speaker pads   |                                     |
| 7) 3.5mm to 3.5mm cable   |                                     |



## 2 Pick Your Speaker Locations

Speakers sound best when they point toward your ears. The T0 has been designed to make this easy, whether used on a desk or in a room.

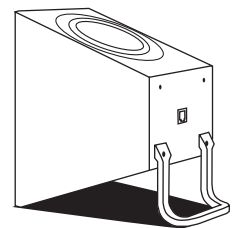
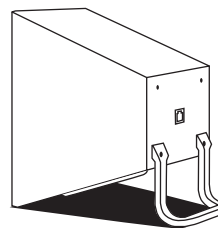
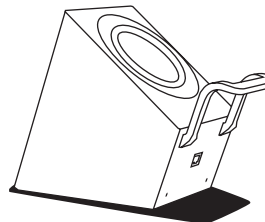
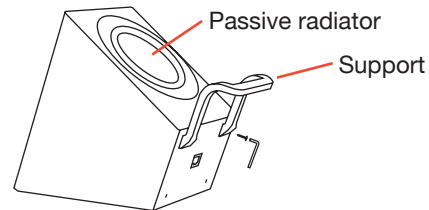
*The support is optional for desktop usage, but we recommend leaving it installed if you have space to improve portability. For spaced constrained applications the supplied 2.5mm Allen wrench can be used to remove the support. The support can also be moved to the other side of the cabinet, as the T0 works with the passive radiator facing either up or down. Note that when the passive radiator faces down the support must face down too; the speaker cannot be allowed to rest on the passive radiator.*

### Desktop Usage

Place the speakers on the supplied pads with the supports and passive radiators facing up. Position the active speaker with the connections on the right side of your seated position (this can be changed in software). Try to get your speakers at equal distance on each side.

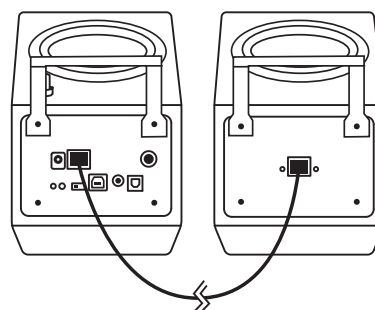
### In-Room Usage

Place the speakers on the supplied pads with the supports and passive radiators facing down. Position the active speaker with the connections on the right side of your listening position (this can be changed in software). Ideally your speakers should be at equal distance from your best listening position on each side, and approximately at ear level when you are seated.



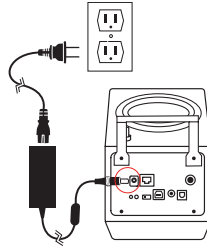
## 3 Connect the Speakers

The included speaker interconnect cable with modular RJ50 connectors makes this a “snap”!



## 4 Connect Power

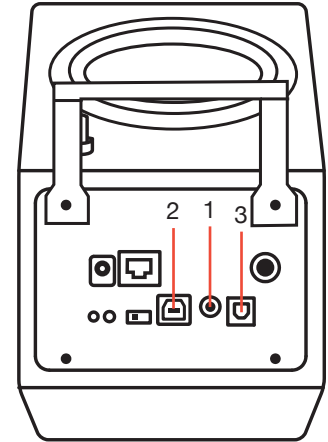
Plug in the AC adapter to the wall and to the active speaker.



## 5 Connect Your Audio Source

Your T0 speakers support analog, USB, optical, and Bluetooth wireless connections.

- 1) Analog — Connect your source using the included using 3.5mm to 3.5mm cable or 3.5mm to RCA cable as appropriate for your source component.
- 2) USB — Connect your computer to the T0 using the supplied USB A to USB B cable. Select the Vanatoo T0 in your computer's audio settings.
- 3) Optical — Connect your source component to the Vanatoo T0 using a Toslink optical cable.
- 4) Bluetooth —
  - a. Press and release the “Pair-Prog” button on the rear of the active speaker, or press “Enable” and then “BT Pair” on the remote control.
  - b. Ensure Bluetooth is turned-on on your source device and pair with the Vanatoo T0.
  - c. Ensure your source device is connected to the Vanatoo T0 over Bluetooth and play music!

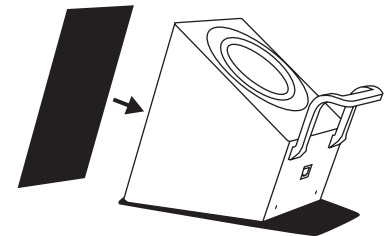


## 6 Install the Grills

Grills come in individual plastic bags. Simple magnetic mounting (no or little alignment necessary). Can go either way such that the “Vanatoo” logo is upright on the bottom.

## 7 Listen to Music!

In most applications you can set the T0 volume control to 100% and adjust the volume up/down from your source (Computer, Bluetooth device, etc).



## 8 Remote Control

The included IR Remote Control is especially handy when your T0's are used with a TV, or for switching sources, adjusting bass and treble, etc. Note that you must hit the “Enable” button to enable the other buttons inside the rectangular box for 30 seconds.

## 9 Optional Settings

The T0 has a lot of setup options, such as enabling the speakers to play mono, disabling sleep mode, varying the LED brightness, connecting a subwoofer and alternate bass profiles for room placement. Go to [www.vanatoo.com/support/downloads](http://www.vanatoo.com/support/downloads) to download the user manual for a full description of the T0 and its setup options.

---

**CONGRATULATIONS!!**  
That's it! We hope you enjoy your Vanatoo Transparent Zero powered speakers.

For additional setup up information, connectivity options, and the troubleshooting guide, check out the Transparent Zero Owner's Guide or visit us at [www.vanatoo.com](http://www.vanatoo.com).

**Contact Us**  
Email: [support@vanatoo.com](mailto:support@vanatoo.com)

## FCC Information and Copyright

This equipment has been tested and found to comply with the limits for a Class B digital device, pursuant to part 15 of the FCC Rules.

These limits are designed to provide reasonable protection against harmful interference in a residential installation. This equipment generates,

uses and can radiate radio frequency energy and, if not installed and used in accordance with the instructions, may cause harmful interference

to radio communications. However, there is no guarantee that interference will not occur in a particular installation. If this equipment does

cause harmful interference to radio or television reception, which can be determined by turning the equipment off and on, the user is

encouraged to try to correct the interference by one or more of the following measures:

- Reorient or relocate the receiving antenna.
- Increase the separation between the equipment and receiver.
- Connect the equipment into an outlet on a circuit different from that to which the receiver is connected.
- Consult the dealer or an experienced radio/TV technician for help.

This device complies with part 15 of the FCC Rules. Operation is subject to the following two conditions:

- (1) This device may not cause harmful interference, and
- (2) this device must accept any interference received, including interference that may cause undesired operation.

changes or modifications not expressly approved by the party responsible for compliance could void the user's authority to operate the equipment.

This equipment complies with FCC radiation exposure limits set forth for an uncontrolled environment. This equipment should be installed and operated with minimum distance 20cm between the radiator & your body. This transmitter must not be co-located or operating in conjunction with any other antenna or transmitter.