

Antenna Measurement Report

Model	:	RF-TRSPIPADF-1
Manufacture	:	Meiloon
Series Number	:	1560634S(QTKOTAPR00594)
Antenna Type	:	IFA
Date	:	2015/06/26

Test Laboratory:

Name:	Linkou Laboratory
Address:	No. 5-22 Rueishu Keng, Rueiping Tsuen, Linkou Shiang, Taipei County 244, Taiwan, R.O.C.

The test results relate only to the samples tested.

Dongguan Meiloon Acoustic Equipments Co., Ltd.

No.80 Yuanlin Road, Feng Huang Gang Ind Estate, Tangxia Town, Dongguan City,
Guangdong Province, 523727, China.

CONTENT:

1. General Information	3
1.1. Applied Reference Documents	3
1.2. Test Setup	3
2. Summary	4
3. 2D Plots	5
4. 3D Plots	10
5. EUT Photo	11

1. General Information

1.1. Applied Reference Documents

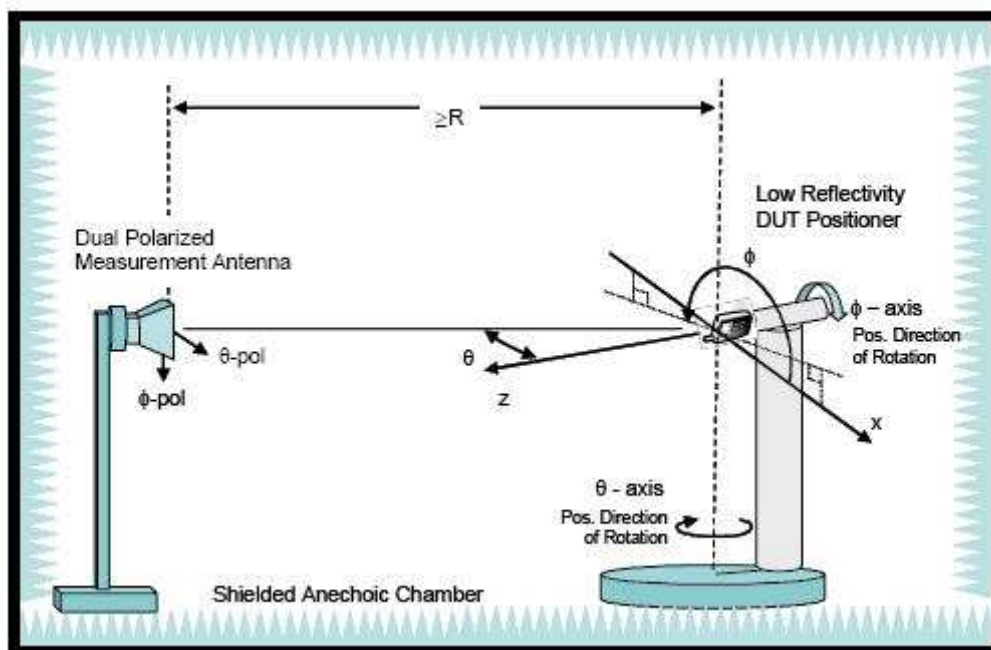
The Equipment Under Test (EUT) has been tested at Linkou Laboratory according to the leading reference document in below table.:

No.	Identity	Document Title	Version/Date
1	Std 149	IEEE Standard Test Procedures for Antenna	1979

1.2. Test Setup

EUT coordinate systems of the previous sections will apply independent of the physical orientations of the EUT inside the chamber.

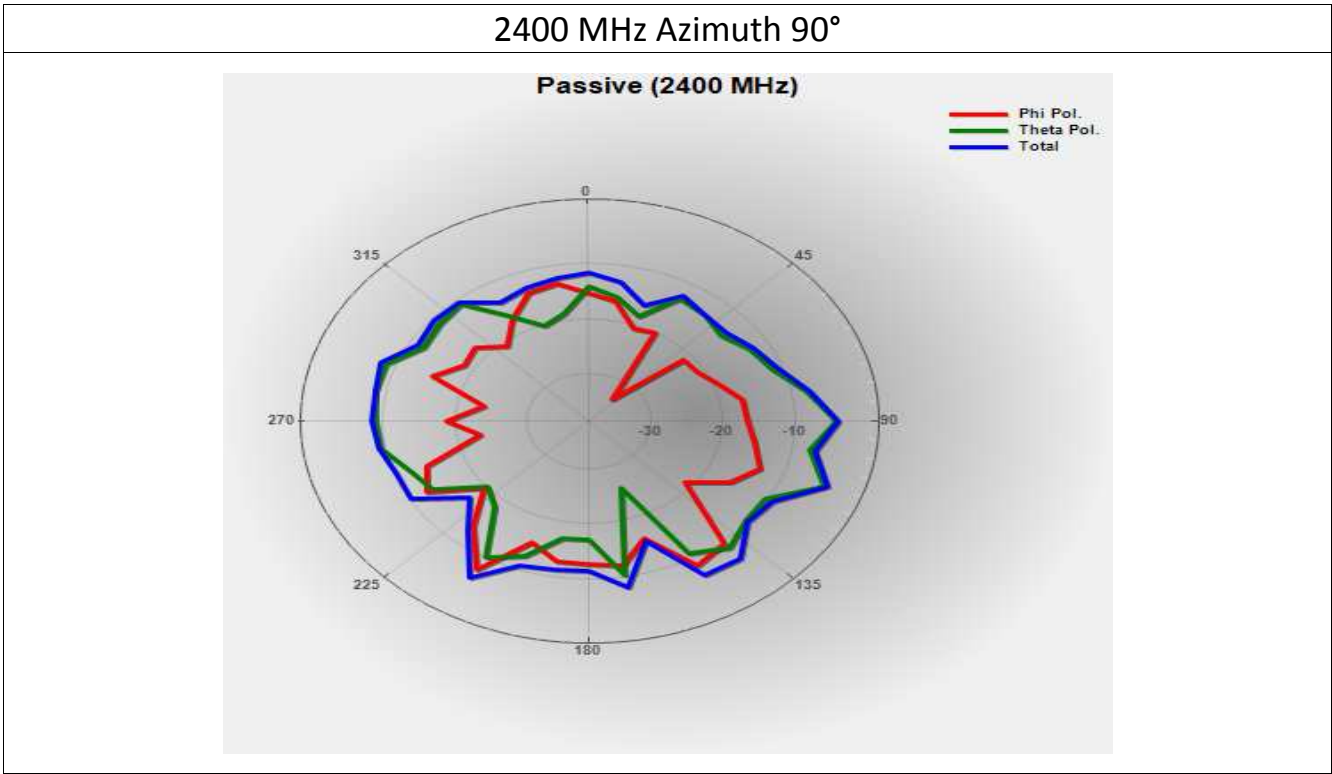
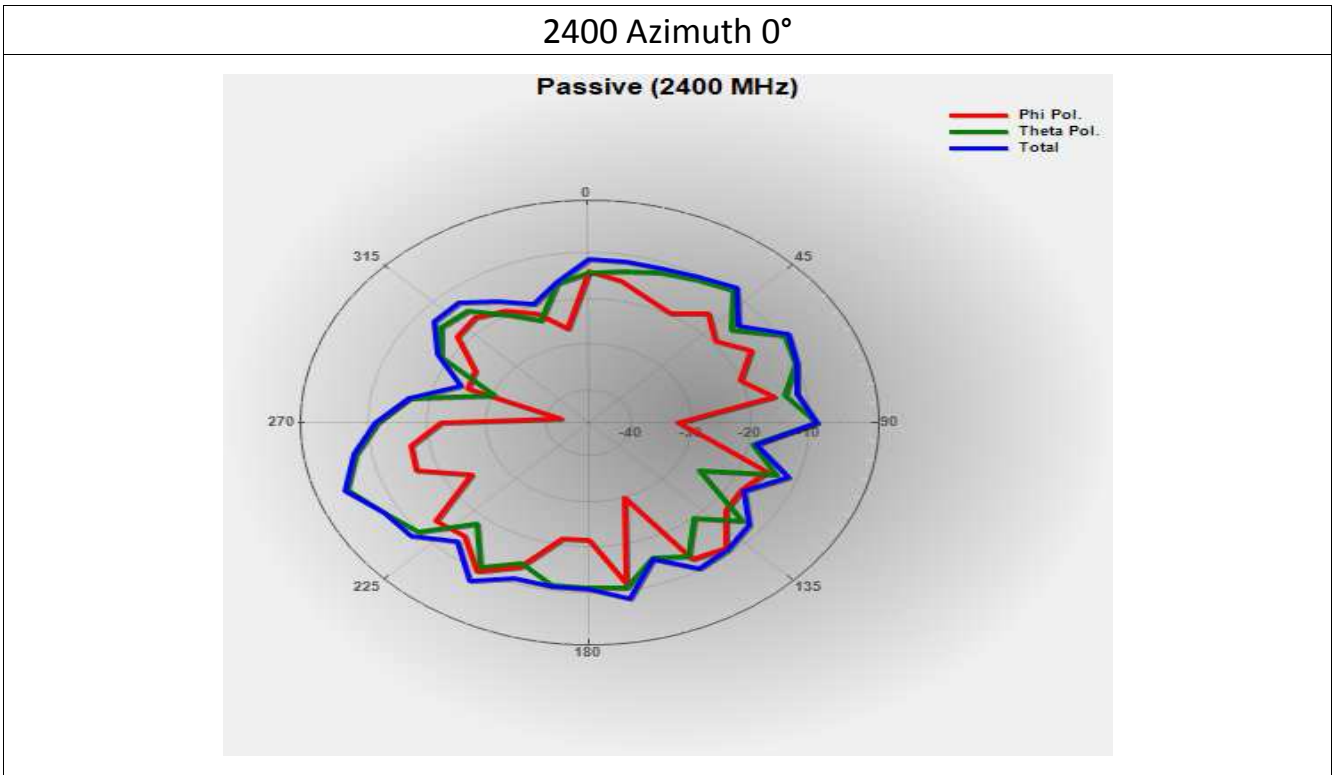
The figure shows the typical setup using a combined axis system. In addition to the pictured Theta axis rotation, the EUT will have to be rotated about the Z-axis (Phi rotation) in order to perform the full spherical scans.



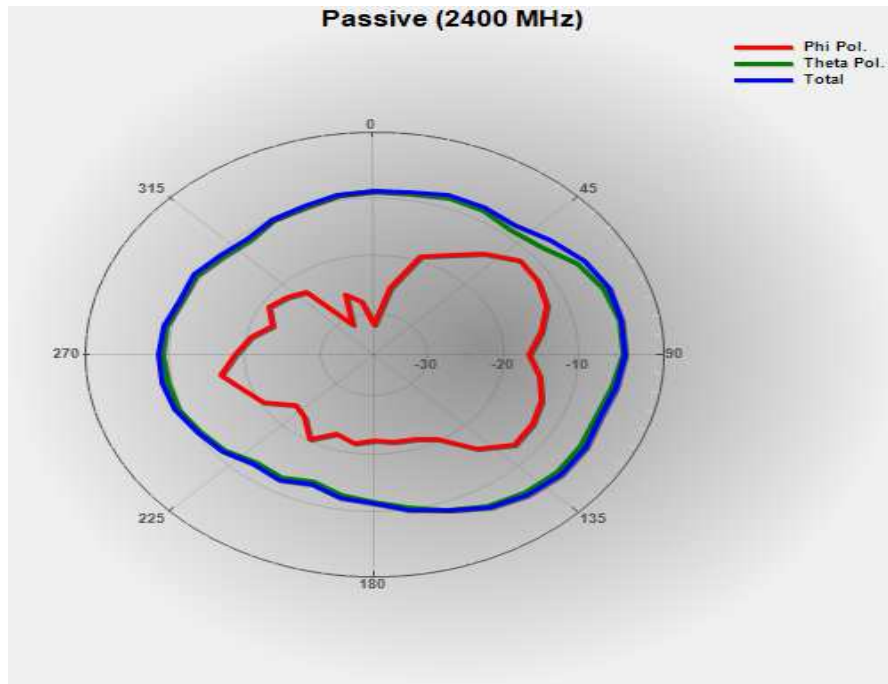
2. Summary

Frequency (MHz)	Summary Max power (db)	Summary Min power (db)	Summary Passive (db)	Summary NHPRP+/- 45 deg (db)	Summary NHPRP+/- 30 deg (db)	Summary UHRP 0 ~ 90 deg (db)	Summary PRP 0 ~ 120 deg (db)	Directivity (dBi)	Efficiency (dB)	Efficiency (%)	Gain (dBi)
2400	-2.98	-30.29	-9.35	-10.63	-11.55	-13.84	-10.71	6.37	-9.35	11.60	-2.98
2450	-1.85	-28.08	-7.95	-9.36	-10.32	-12.41	-9.41	6.10	-7.95	16.04	-1.85
2500	0.50	-23.27	-5.67	-7.22	-8.30	-10.20	-7.31	6.17	-5.67	27.09	0.50

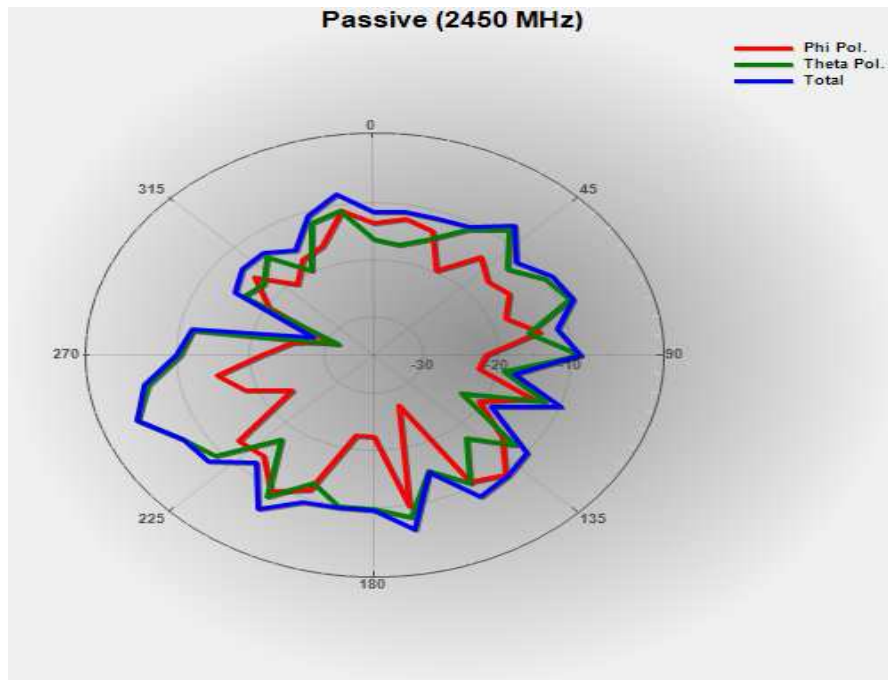
3. **2D Plots**



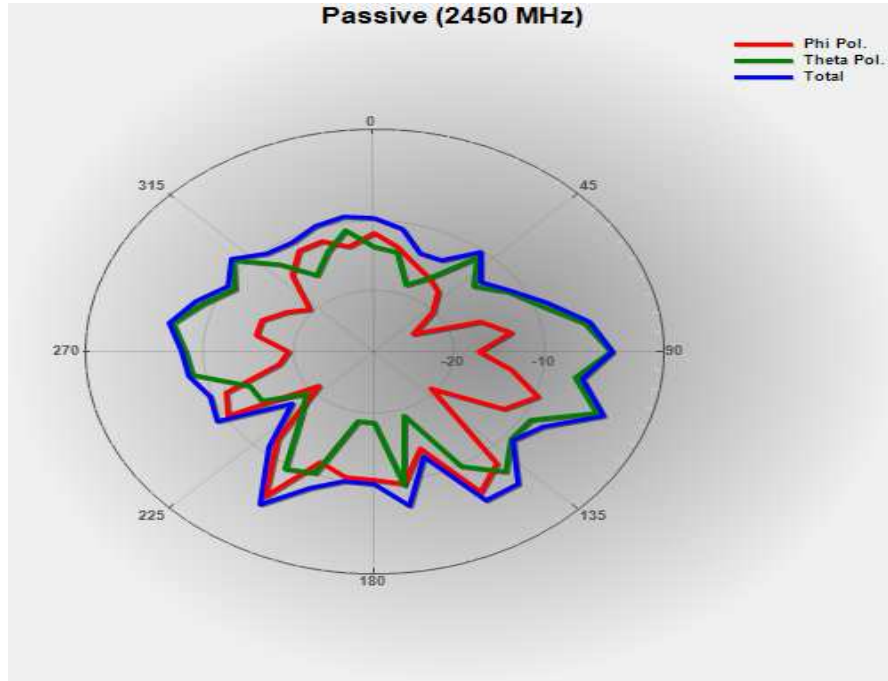
2400 MHz H-Plane (Elevation 90°)



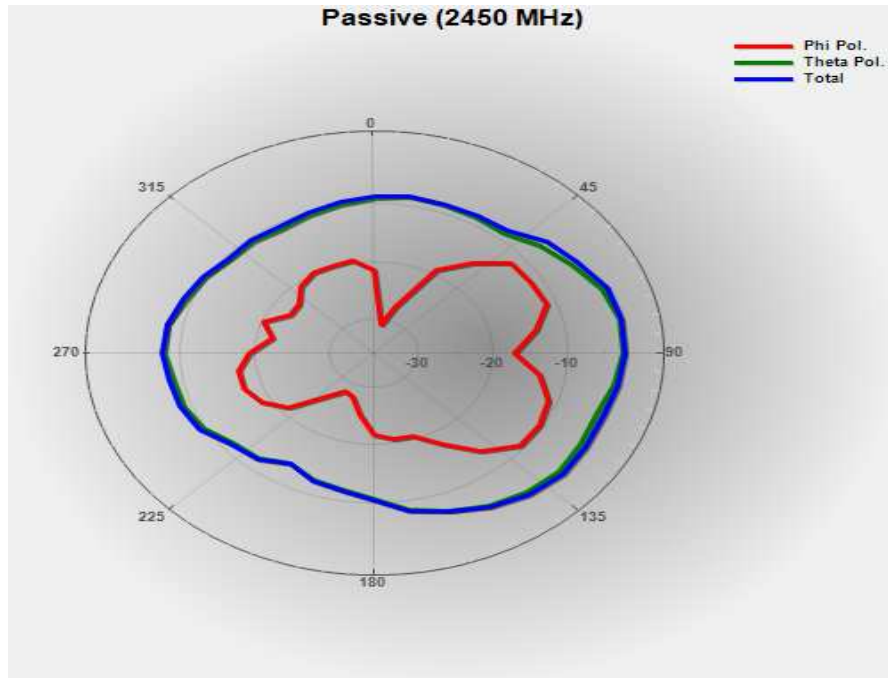
2450 Azimuth 0°



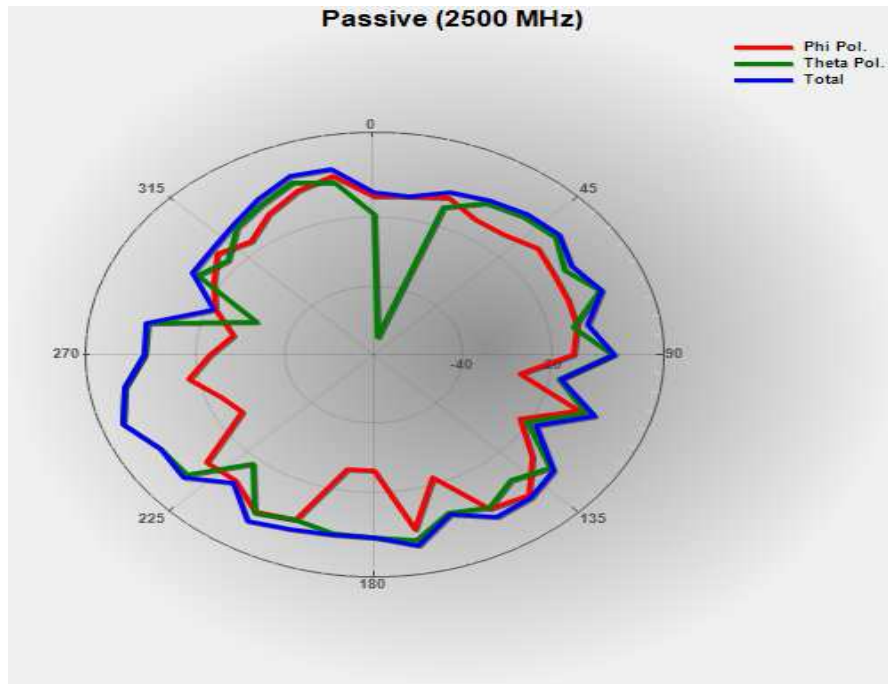
2450 MHz Azimuth 90°



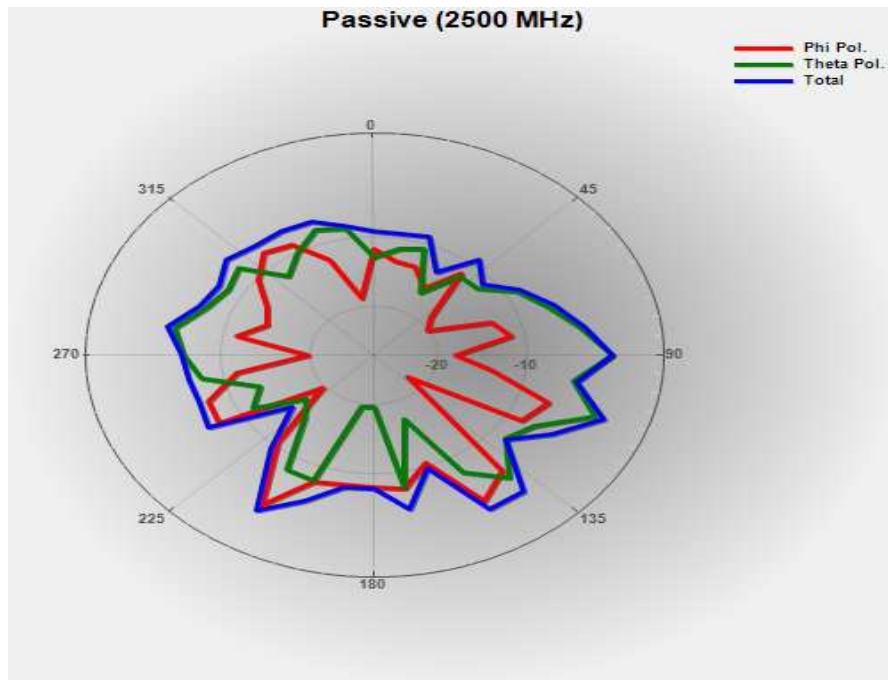
2450 MHz H-Plane (Elevation 90°)



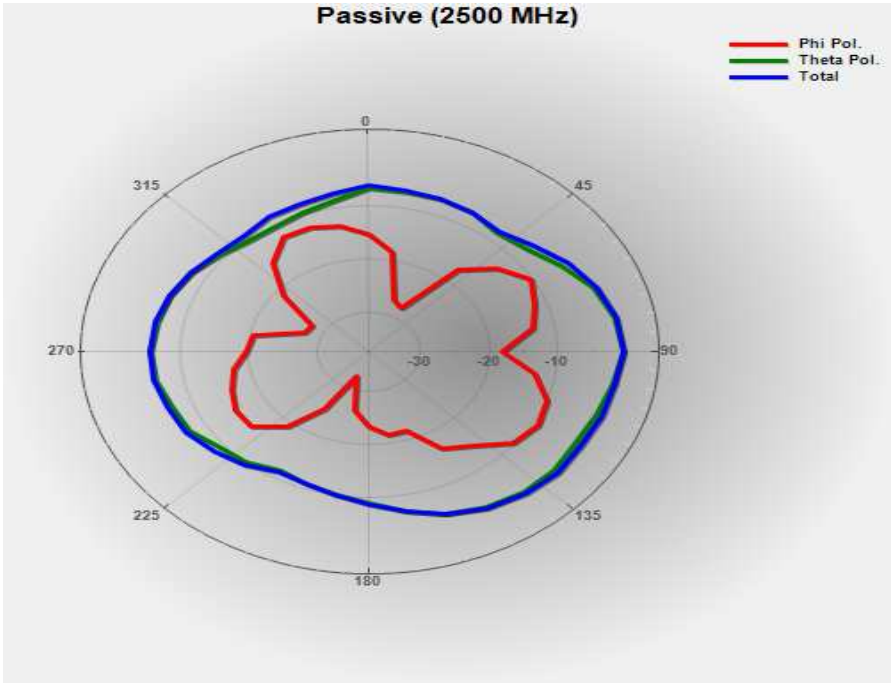
2500 Azimuth 0°



2500 MHz Azimuth 90°

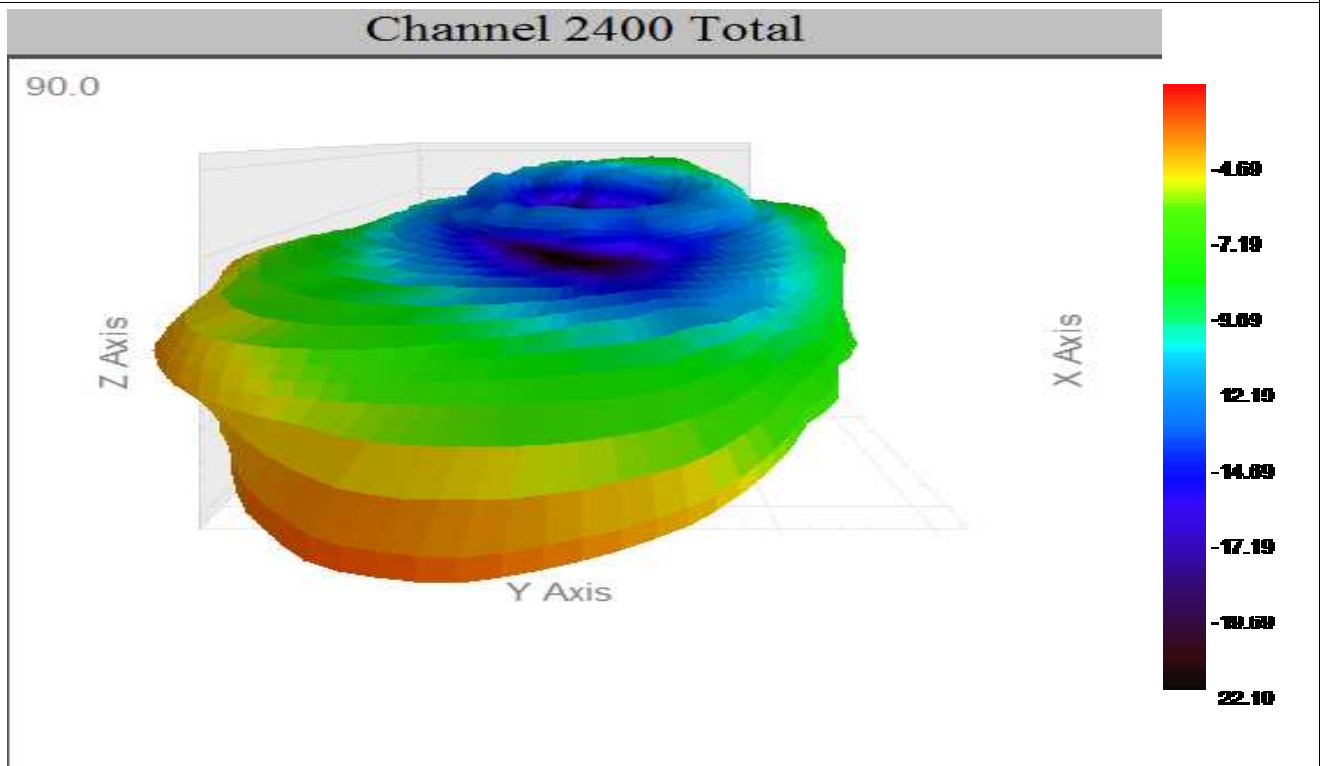


2500 MHz H-Plane (Elevation 90°)

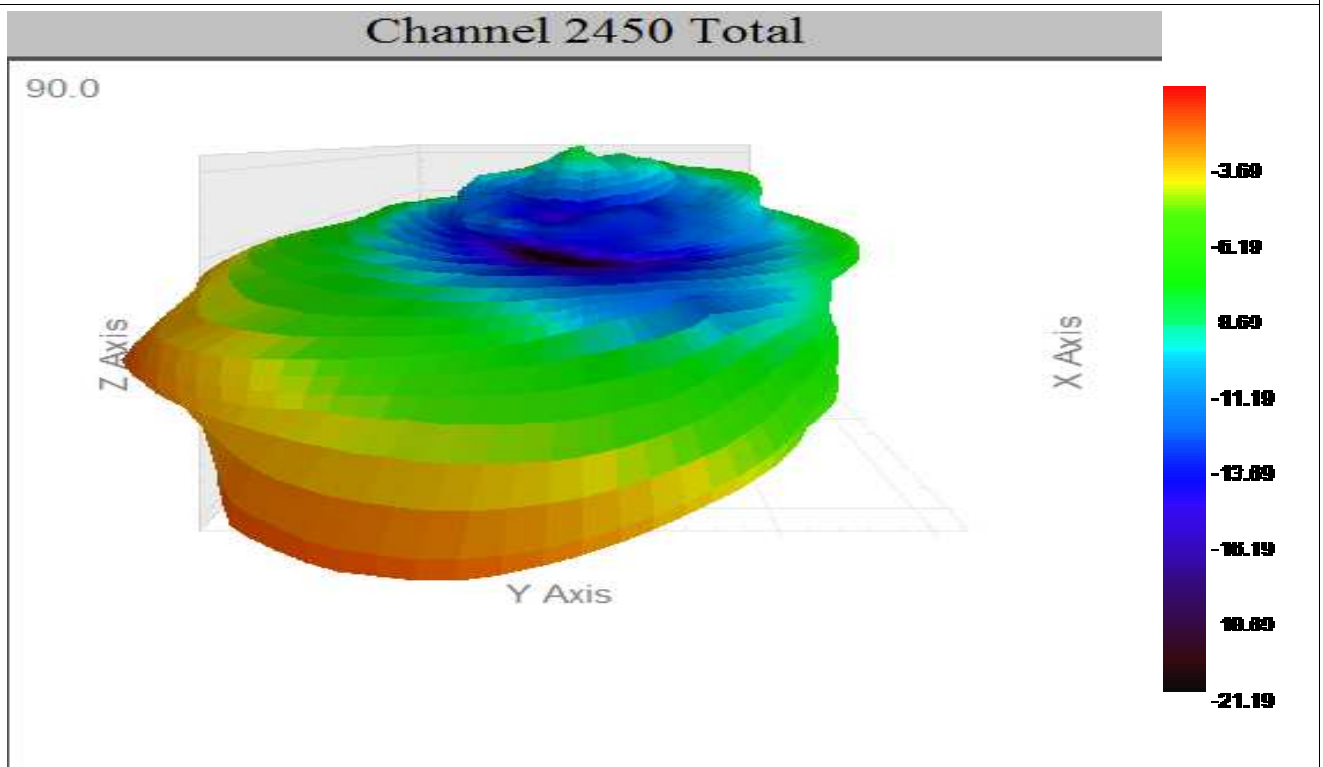


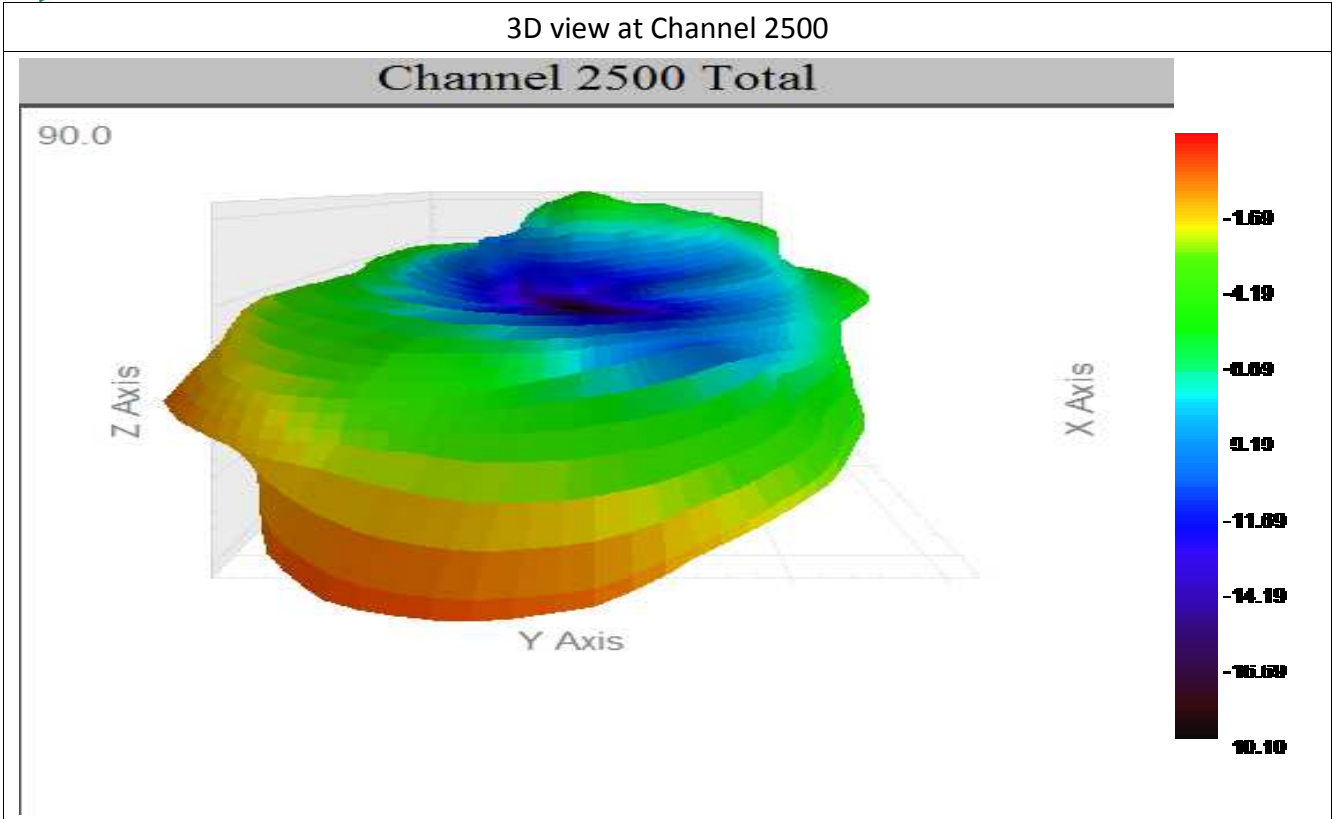
4. 3D Plots

3D view at Channel 2400



3D view at Channel 2450





5. **EUT Photo**

