

Instruction Manual

Karaoke Machine



LY-WS08E





Safety information

Important - please read these instructions fully before installing or operating

Power source



- This symbol means that this unit is double insulated. An earth connection is not required.
- The appliance must be connected to a 100-240 volt 50/60Hz AC supply.

- Unplug this apparatus during lightning storms or when unused for long periods of time - to prevent damage to this product.



- Opening or removing covers may expose you to dangerous voltages or other hazards.



- To prevent the risk of fire or electric shock, avoid overloading wall outlets, extension cords, or integral convenience receptacles.

- Use suitable power sources - Plug the product into a suitable power source, as described in the operating instructions or as marked on the product.

- The supply voltage should be the same as indicated in the technical specifications and the appliance rating plate.

- If the socket outlets in your home are not suitable for the plug supplied with this unit check with a qualified electrician for replacement.

- In order to disconnect the apparatus from the mains, switch off the outlet and completely remove the mains plug.



- Do not bend, stretch or pull the supply cable in order to avoid electric shock.
- When installed, the power socket must be within easy reach.

Moisture and water

- Do not use this apparatus near water or moisture.
- Do not use this product near a bathtub, washbowl, kitchen sink, in a wet basement, near a swimming pool, or anywhere else that water or moisture is present.

Heat sources and flames



- Batteries should not be exposed to excessive heat such as sun or fire.

- To prevent the risk of fire or electric shock, avoid overloading wall outlets, extension cords, or integral convenience receptacles.

Servicing and repairs

- Refer all servicing to qualified service personnel.
- Servicing is required when the apparatus has been damaged in any way; such as liquid has been spilled or objects have fallen into the apparatus; the apparatus has been exposed to rain or moisture, does not operate normally, or has been dropped.

Safety information

Important - please read these instructions fully before installing or operating

Warning

The normal function of the product may be disturbed by strong Electro-Magnetic Interference. If so, simply reset the product to resume normal operation by following the instruction manual. In case the function could not resume, please use the product at another location.

Technical specification

Specification	Rating
Power source	7.4V 5400mAh battery
Max. power consumption	40W
Speaker RMS power	40W
FM frequency	88-108 MHz
Frequency response	60Hz~20KHz
Bluetooth version	V5.0
Unit dimensions	304 x 522 x 308mm

FCC Statement

Changes or modifications not expressly approved by the party responsible for compliance could void the user's authority to operate the equipment.

This equipment has been tested and found to comply with the limits for a Class B digital device, pursuant to Part 15 of the FCC Rules. These limits are designed to provide reasonable protection against harmful interference in a residential installation. This equipment generates uses and can radiate radio frequency energy and, if not installed and used in accordance with the instructions, may cause harmful interference to radio communications. However, there is no guarantee that interference will not occur in a particular installation. If this equipment does cause harmful interference to radio or television reception, which can be determined by turning the equipment off and on, the user is encouraged to try to correct the interference by one or more of the following measures:

- Reorient or relocate the receiving antenna.
 - Increase the separation between the equipment and receiver.
 - Connect the equipment into an outlet on a circuit different from that to which the receiver is connected. --
- Consult the dealer or an experienced radio/TV technician for help

This device complies with part 15 of the FCC rules. Operation is subject to the following two conditions

(1) this device may not cause harmful interference, and (2) this device must accept any interference received, including interference that may cause undesired operation.

This equipment complies with FCC radiation exposure limits set forth for an uncontrolled environment. This equipment should be installed and operated with minimum distance 20cm between the radiator & your body

Before You Begin:

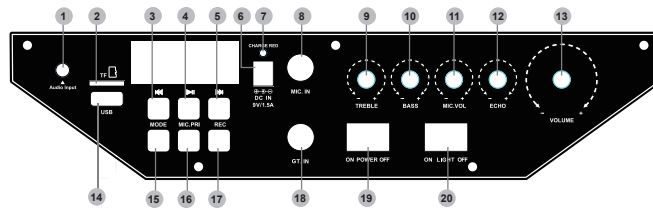
- Battery of the Karaoke Machine must be charged for eight hours before first use. At subsequent charging, only five hours will be required.
- Insert two AA batteries into each microphone. Turn them on and a green light will flash, indicating that they are ready to work.
- Make sure that all three volume controls (3, 12 and 13 on diagram) are turned up. The one on the left (3) controls the music volume, and the two towards the center (12, 13) control the mic and mic echo volume.

The Karaoke Machine is Compatible with the Following Devices:

Device	Pairing Instructions
Bluetooth	Press the Mode button until " bt " (for Bluetooth) is displayed on the screen, and enable Bluetooth on your device
FM Radio	Press Mode button until " Channel number " is displayed on the screen, select FM radio on your device and select a channel, press the Scan button on your karaoke machine and it will memorize the selected channel
FM Radio	Press Mode button until " Channel number " is displayed on the screen, select FM radio on your device and select a channel, press the Scan button on your karaoke machine and it will memorize the selected channel
TF Card	Stick your TF card into the appropriate slot and the machine will read automatically (6 on diagram)
USB Stick	Plug your USB stick into the appropriate slot and the machine will read automatically (7 on diagram)
Anything that has a Cable Socket	Press Mode button until " Line " is displayed on the screen, plug your auxiliary cable into the port (8 on the diagram)

Important Tips:

- ❶ Turn off the karaoke machine and microphones when they are not in use to preserve battery life.
- ❷ The microphones should be held at least a meter away from the machine to prevent interference.
- ❸ The working distance of the microphones is thirty meters away from the machine. This distance will decrease in accordance with the battery capacity of the microphones.
- ❹ Charge the machine fully before storing for a long period of time.
- ❺ Charge the machine fully at least once every three months. This will prevent battery problems.
- ❻ You must use an TF card of AT/FAT32 type, maximum 32GB.
- ❼ Before removing TF card or USB stick, turn off the machine. This will avoid damaging the card or the machine.
- ❽ A USB stick and TF card will not work simultaneously, you must have only one plugged in at a time.
- ❾ You can connect your TV to the Karaoke Machine with either Bluetooth (if your TV is Bluetooth-enabled), or a RCA AUX cable and continue to view the lyrics on the screen of the TV.



Control panel

1. Port for 3.5 AUX Audio Input Cable:

Use this cable to connect the karaoke machine to any device that can connect to an AUX wire; The machine will play the music from the device.

2. TF:

Please insert TF card to play back music. The mode will switch to TF mode when insert TF card automatically.

3. Previous:

Press to Previous sound track.

4. PLAY/PAUSE/TWS:

Press to play music, press again to pause music. Hold to enter BT TWS connection in BT mode.

5. NEXT:

Press to next sound track.

6. DC IN 9V/1.5A:

Power cable port to charge the speakers.

7. CHARGE LED:

Red LED turn on when charging battery. It will turn off after fully charged.

8. MIC IN:

Connect a microphone.

9. TREBLE:

Rotate clockwise to increase treble; rotate anti-clock to decrease treble.

10. BASS:

Rotate clockwise to increase bass; rotate anti-clock to decrease bass.

11. MIC. VOL:

Rotate to adjust microphone volume.

12. ECHO:

Rotate to adjust echo sound effect.

13. VOLUME:

Rotate clockwise to turn on the speaker and increase the volume. Rotate counterclockwise to decrease.

14. USB:

Please insert USB to play back music. The mode will switch to USB mode when inserting a USB automatically. Noted: If both TF and USB are inserted, all songs in USB and TF keep looping.

15. MODE:

Press to select Bluetooth, AUX, function cyclic.

16. MIC. PRI.:

Press to enter microphone voice priority and cut music; press again microphone voice come with music.

17. REPLAY/REC:

Insert USB disk into USB port. Press and hold to start record microphone voice. Press again to stop record. Press again to playback record program.

18. GT. IN:

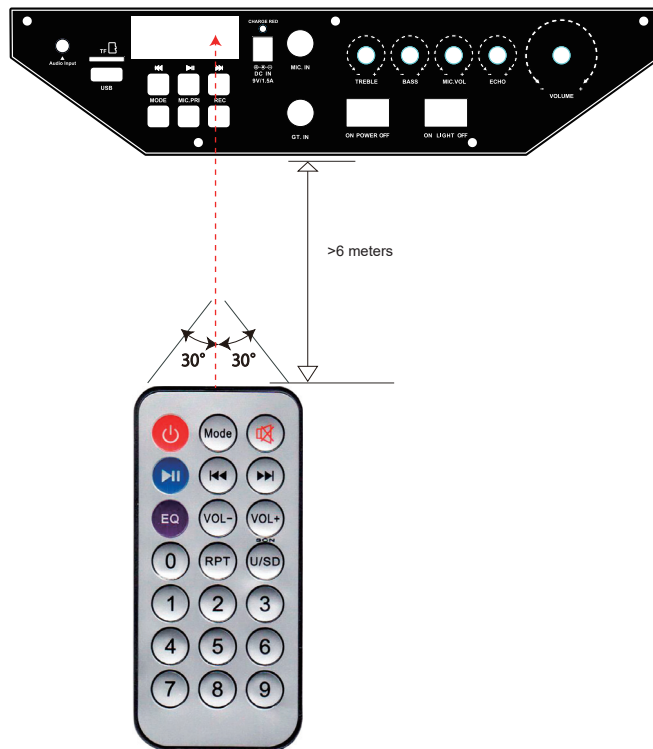
Plug in your electronic guitar cable.

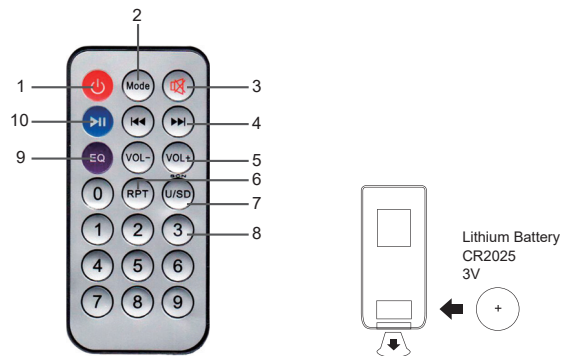
19. POWER:

Press to "ON" to turn on power or to "OFF" to turn off power.

20. LIGHT:

Press to "ON" to turn on light or to "OFF" to turn off light.





The Remote Control:

- 1. Standby:**
This puts the machine on "pause", it does not shut down the machine.
- 2. Select Mode:**
 - a) Line In Mode:
Use audio cable to connect device name with machine, or plug TF card/USB stick into appropriate slots.
 - B) Bluetooth Mode:
Use Bluetooth to connect device " Star21 " with the machine remotely.
 - C) FM Radio Mode: Turn on the radio to desired frequency on your device, select Scan (C on diagram), and the machine will play desired FM channel.
- 3. Mute:**
Silence the music without stopping it.
- 4. Previous/Next:**
Move to previous or next song/channel.
- 5. Volume Control:**
Decrease or increase the volume for music.
- 6. Repeat:**
Single click to repeat one tune, click again to stop repeat function.
- 7. Scan:**
Scan FM channels. The LCD screen on function board will show P01, P02, P03 etc., and store the selected channels in the machine's memory. Press Previous/Next (4 on Remote Control diagram) to choose from the channels you stored.
- 8. Number Keypad:**
Choose a song from TF card/USB stick, this function does not work with FM Radio or Bluetooth mode.
- 9. EQ:**
Five fixed EQ modes to choose from.
- 10. Pause/Play**

Troubleshooting

Problem	Reason(s)	Solution(s)
No power	Battery power low.	Please charge unit used 9V/1.5A adapter.
No Sound	Volume is too low. AUX/BT source. Volume is too low. Microphone/Guitar input volume is too low.	Increase the volume. Increase the output volume. of the AUX/BT source. Increase the volume of either mic or guitar input.
Sound is distorted Sound is distorted from AUX input	Battery power low. AUX source. volume is too high.	Please charge unit. Reduce the output volume. of the AUX source.
The remote control is not working	The battery is flat	Replace the remote control battery

