

Before You Begin:

- Battery of Karaoke Machine must be charged for eight hours before first use. At subsequent charging, only five hours will be required.
- Insert two AA batteries into each microphone. Turn them on and a display light indicating that they are ready to work.
- Make sure that all three volume controls (8, 12 and 13 on diagram) are turned up. The one on the left (3) controls the music volume, and the two towards the center (12, 13) control the mic and mic echo volume.

The Karaoke Machine is Compatible with the Following Devices:

Device	Pairing Instructions
Bluetooth	Press Mode button until "bt" (for Bluetooth) is displayed on screen, and enable Bluetooth on your device.
FM Radio	Press Mode button until "Channel number" is displayed on screen, select FM radio on your device and select a channel, press the Scan button on your karaoke machine and it will memorize the selected channel.
TF Card	Stick your TF card into the appropriate slot and the machine will read automatically (6 on diagram).
USB Stick	Plug your USB stick into the appropriate slot and the machine will read automatically (7 on diagram).
Anything that has a Cable Socket	Press Mode button until "Line" is displayed on screen, plug your auxiliary cable into the port (8 on diagram).



Karaoke Machine

Quick Starting Guide

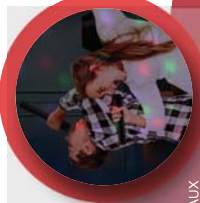
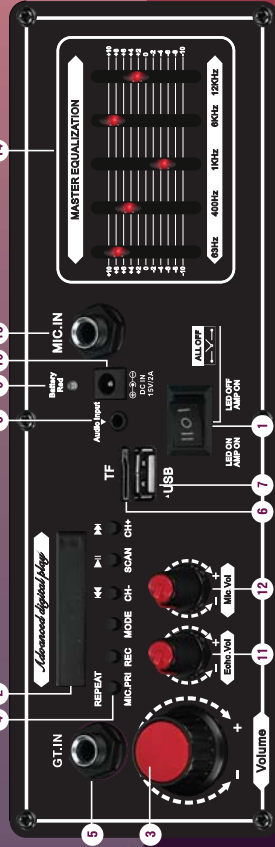
It is important to please read through the entire manual before starting your machine!

Figuring Out the Function Board

- 1 Power:**
 - Slide to left to turn on both the karaoke machine and the disco ball.
 - Slide to right to turn on only the karaoke machine.
 - Slide to left to turn off both the karaoke machine and the disco ball.
- 2 Repeat & Stop:** Shows modes, battery capacity and FM frequency when applicable, adjust music sound levels.
- 3 Mode:** There are six buttons displayed horizontally here.
- 4 Stop:** If you would like the music to stop while using the microphone, press this button. Music will re-start when button is released.
- 5 Record:** To record, insert your TF card or USB drive into the appropriate slot. When on the microphone and press record. When you are done, remove your TF card or USB stick. Re-insert to play your recording.
- 6 Channel Select:** You can choose one of the following five options

- 7 USB Stick Slot:** Use this cable to connect the karaoke machine to any device that can connect to an AUX wire. The machine will play the music from the device.
- 8 Battery Indicator:** A red light indicates that battery is in charged, and blue indicates that battery is full.
- 9 DC IN 15V/2A:** Power cable port to charge the speakers.
- 10 Echo Volume Control**
- 11 Mic Volume Control**
- 12 Master Equalization:** Adjust the bass and treble of music by playing around with the EQ board.

- 13 TF Card Slot:** Pair your device with the machine wirelessly using Bluetooth.
- 14 FM Mode:** Listen to FM channels by turning on your radio and pressing Scan (C on diagram), the machine will then memorizes your preferred channel (it can memorizes up to 40 channels).
- 15 Repeat:** Press this button to go back to the previous song/channel.
- 16 Stop:** Press this button to move to the next song/channel.
- 17 Back, Home, Live & Play:** Plug in your electronic guitar cable.
- 18 TF Card Slot**



- 19 USB Stick Slot:** Use this cable to connect the karaoke machine to any device that can connect to an AUX wire. The machine will play the music from the device.
- 20 Battery Indicator:** A red light indicates that battery is in charged, and blue indicates that battery is full.
- 21 DC IN 15V/2A:** Power cable port to charge the speakers.
- 22 Echo Volume Control**
- 23 Mic Volume Control**
- 24 Master Equalization:** Adjust the bass and treble of music by playing around with the EQ board.



The Remote Control:

- 1 Standby:** This puts the machine on "pause", it does not shut down the machine.
- 2 Select Mode:** Use audio cable to connect a) Line In Mode, Use audio cable to connect cable to the machine, or plug TF card/USB cable to the appropriate slots.
- 3 Bluetooth Mode:** Use Bluetooth to connect device with machine remotely.
- 4 FM Radio Mode:** Turn on radio to desired frequency on your device, select Scan (C on diagram), and machine will play desired FM channel.
- 5 Mute:** Silence the music without stopping it.
- 6 Previous/Next:** Move to previous or next song/channel.
- 7 Volume Control:** Decrease or increase the volume for music.
- 8 Repeat:** Single click to repeat one tune, click again to skip repeat function.
- 9 Scan:** Scan FM channels. The LED screen on function board will show CH01, CH02, CH03 etc. and store the selected channels in the machine's memory. Press Previous/Next (4 on Remote Control diagram) to choose from the channels you stored.
- 10 Number Keypad:** Choose a song from TF card/USB stick, this function does not work with FM Radio or Bluetooth mode.
- 11 EQ:** Five fixed EQ modes to choose from.
- 12 Pause/Play**



Item contents:

- 1 Karaoke Machine
- 1 Remote Control
- 2 Wireless Microphones
- 1 DC 15V/2A Charging Adaptor
- 1 3.5 mm AUX Cable
- 1 RCA Cable
- 1 Phone Device Stand



Warning: This product will turn any party into a rocking music festival.

FCC Statement
Changes or modifications not expressly approved by the party responsible for compliance could void the user's authority to operate the equipment.

This equipment has been tested and found to comply with the limits for a Class B digital device, pursuant to Part 15 of the FCC Rules. These limits are designed to provide reasonable protection against harmful interference in a residential installation. This equipment generates uses and can radiate radio frequency energy and, if not installed and used in accordance with the instructions, may cause harmful interference to radio communications. However, there is no guarantee that interference will not occur in a particular installation. If this equipment does cause harmful interference to radio or television reception, which can be determined by turning the equipment off and on, the user is encouraged to try to correct the interference by one or more of the following measures:

- Reorient or relocate the receiving antenna.
 - Increase the separation between the equipment and receiver.
 - Connect the equipment into an outlet on a circuit different from that to which the receiver is connected.
 - Consult the dealer or an experienced radio/TV technician for help.
- This device complies with part 15 of the FCC rules. Operation is subject to the following two conditions:
(1) This device may not cause harmful interference, and (2) this device must accept any interference received, including interference that may cause undesired operation.
- This equipment complies with FCC radiation exposure limits set forth for an uncontrolled environment. This equipment should be installed and operated with minimum distance 20cm between the radiator & your body.

