

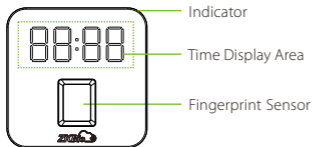
Quick Start Guide

Aurora T1

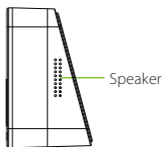
Version: 1.0

1 Overview

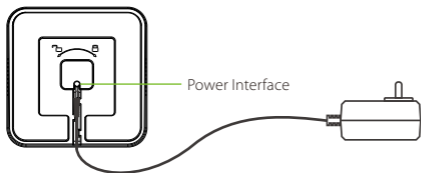
Front View



Side View



Rear View



2. Packing List



Device



5V Power



3M Tape



User Guide

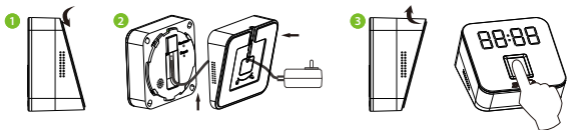


Screws

3. Device Installation

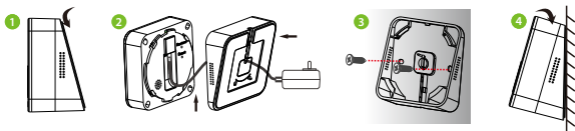
● Mount on the Desk

- 1) Hold the Device with both the hands, and rotate the back cover to 180 degree to disassemble the Device.
- 2) Pass the power cable through the wiring hole of the back cover and insert it into the power interface.
- 3) After wiring the power cable, push the back cover onto the Device, and rotate it in the clockwise direction to close it.
- 4) Use the 3M double-sided tape to fix the device on the desktop.



● Mount on the Wall

- 1) Hold the Device with both the hands, rotate the back cover to disassemble the Device.
- 2) Pass the power cable through the wiring hole of the back cover and insert it into the power interface.
- 3) Push the back cover on the wall then drill holes, and then fix it with expansion tubes and screws.
- 4) Attach the Device onto the back cover, and rotate the Device in the clockwise direction to close it.



4. Connect the Device

Step 1: Software Application Access

The screenshot displays the ZKBio software interface. At the top, there are navigation tabs: Home, Contacts (highlighted with a red box and number 1), Work, Device, and My Company. On the left, a sidebar menu includes Organization, Custom Field, and Employee (highlighted with a red box and number 2). The main content area shows the profile of 'Yang Kallin' with ID 1190130 and phone number Zko. Below the profile, there are tabs: General (highlighted with a red box and number 3), Personal, Document, Device Access, and APP Access (highlighted with a red box and number 4). The 'APP Access' tab is active, showing 'Account Information' with an 'Email' field (highlighted with a red box and number 5) and a 'User Permission' dropdown menu (highlighted with a red box and number 6) set to 'HR'. Under the 'APP License' section, there is a checked 'Enable APP Access' checkbox (highlighted with a red box and number 7) and an 'Assign License' field (highlighted with a red box and number 8). At the bottom, there are fields for 'License Key', 'Effective Dte', and 'Expiration Dte', along with an 'Invite' button and 'Save' and 'Clear Account' buttons.

In the software, the users need to be added and set with Mobile App access on the Web in advance. Then the users can activate the Mobile App account and login to the mobile App. Each account can only be bound to one phone.

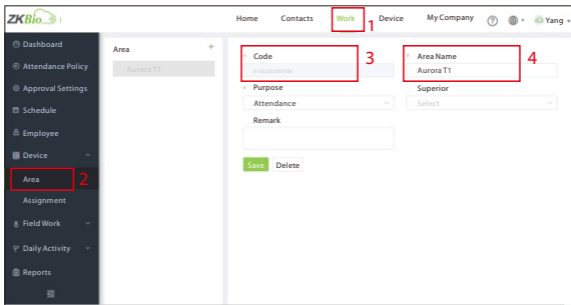
Email: The account for logging in to the App.

User Permission: Select the User Role with Admin access.

APP Access: Select **Enable APP Access** to enable the user to use the APP.

Assign License: Click to assign App license for the users.

Step 2: Create the Area



In the software, the device areas need to be created on the Web in advance.

Click **Work > Device > Area** on the Web.

Code: Enter the serial number of the device.

Area Name: Create the name of the area.

Step 3: Download APP

Use the mobile phone and scan the QR Code to download the **ZKBioCloud APP**.



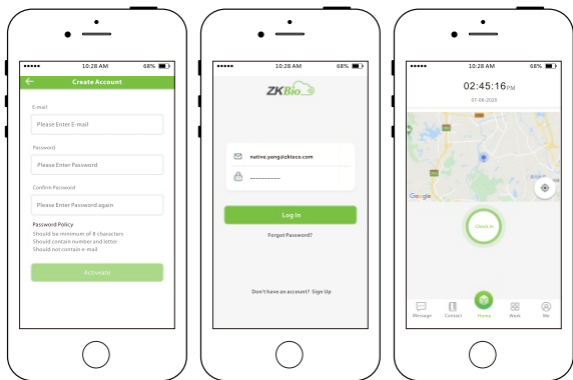
IOS



Android

Step 4: Activate and login the APP account

Open the **ZKBioCloud APP**, enter the registered account and password on the App interface, and then login after the account is activated.

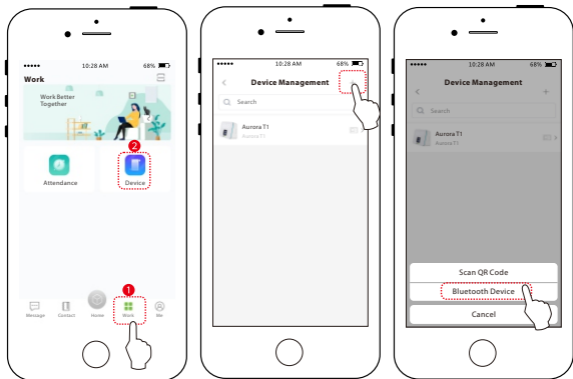


Step 5: Bind Device

- 1 Power on the Device. Switch to the **Work** interface in the **ZKBioCloud APP**; tap **Device** to enter the Device management interface; tap **+** in the upper right corner to add the Device; select the **Bluetooth Device**, and the phone will automatically search for the device.

Note:

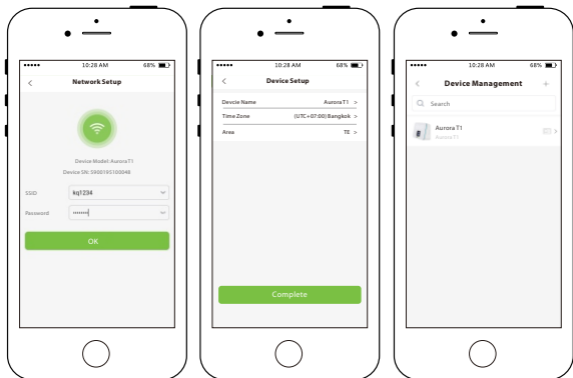
1. In the mobile phone turn on the bluetooth function, and the location service.
2. The device needs to be close to the phone to avoid the search failure.



- 2 After the bluetooth connection is successful, it will automatically navigate to the "Network Setup" page. Select the corresponding wifi, and enter the password. (The Device flashes yellow when it connects the Wifi successfully, and after it is successfully connected to the server, the light turns to green.)

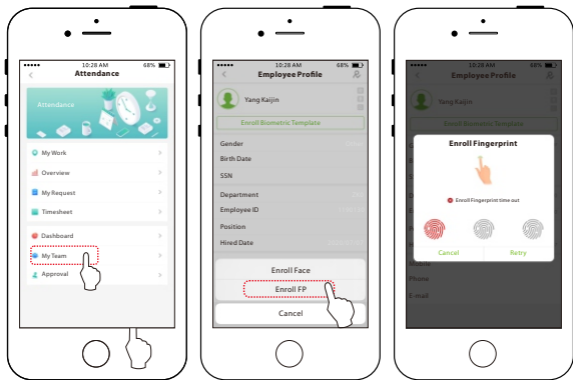
When the Device is successfully connected to the network, the Device name, Time Zone and Area can be changed according to the actual requirement.

After the successful connection of the Device, the server automatically sends data to the Device.



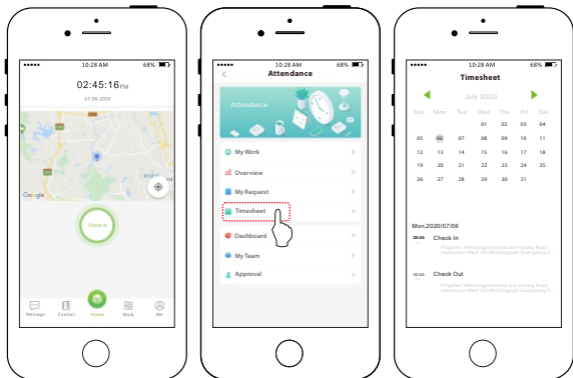
5. Enroll Fingerprint

Switch to the **Work** interface in the **ZKBioCloud APP**, tap **My Team** in the Attendance list interface, and then select the employee who needs to enroll fingerprint. Tap **Enroll Biometric Template**, then select the **Enroll Fingerprint**, and then register the fingerprint on the Device according to the prompts of the Device.



6. Punch/Verify

After successful enrollment, the user can punch on the device, or through the APP. The following figure shows the punch records on the APP:



7. Export Attendance Report

On the **ZKBioCloud** web side, select **Reports** and enter the information of the required employee to generate the report.

There are 9 types of reports that can be viewed, as shown below:

The screenshot displays the ZKBioCloud web interface. The top navigation bar includes 'Home', 'Contacts', 'Work', 'Device', and 'My Company'. The 'Work' tab is highlighted with a red box and a '1' next to it. On the left sidebar, the 'Reports' menu item is highlighted with a red box and a '2' next to it. A sub-menu is open, listing various report types: 'Time Card', 'Who's In/Out Report', 'Hours Total Summary', 'Employee Punch Report', 'Time Off', 'Abnormal Report', 'Abnormal Times', 'Approaching Overtime', and 'Attendance Summary'. The 'Attendance Summary' item is highlighted with a red box and a '3+' next to it. In the main content area, there is a form to generate a report. The 'Employee' field is highlighted with a red box and a '4' next to it. Below it, there are two date selection fields: the first is highlighted with a red box and a '5' next to it, and the second is highlighted with a red box and a '6' next to it. To the right of the date fields are two icons: a red one with a '7' and a green one with an '8'. Below the form is an 'Employee Timecard' report for 'ABC Company'. The report includes employee details and a table of attendance data.

| Monday | Tue | W | Thu | Daily Total |
|--------|------------|-------|-------|-------------|
| Mon | 12/15/2019 | 08:00 | 17:30 | 09:30 |
| Mon | 12/15/2019 | 17:30 | 17:30 | 00:00 |
| Tue | 12/16/2019 | 08:00 | 17:30 | 09:30 |
| Tue | 12/16/2019 | 17:30 | 17:30 | 00:00 |
| Mon | 12/15/2019 | 17:30 | 17:30 | 00:00 |
| Tue | 12/16/2019 | 08:00 | 17:30 | 09:30 |
| Tue | 12/16/2019 | 17:30 | 17:30 | 00:00 |
| Total | | | | 09:30 |

Note: For more details, please refer to the **ZKBioCloud User Manual** or the **ZKBioCloud APP User Manual**.

FCC Warning

Any Changes or modifications not expressly approved by the party responsible for compliance could void the user's authority to operate the equipment.

Note: This equipment has been tested and found to comply with the limits for a Class B digital device, pursuant to part 15 of the FCC Rules. These limits are designed to provide reasonable protection against harmful interference in a residential installation. This equipment generates uses and can radiate radio frequency energy and, if not installed and used in accordance with the instructions, may cause harmful interference to radio communications. However, there is no guarantee that interference will not occur in a particular installation. If this equipment does cause harmful interference to radio or television reception, which can be determined by turning the equipment off and on, the user is encouraged to try to correct the interference by one or more of the following measures:

- Reorient or relocate the receiving antenna.
- Increase the separation between the equipment and receiver.
- Connect the equipment into an outlet on a circuit different from that to which the receiver is connected.
- Consult the dealer or an experienced radio/TV technician for help.

This device complies with part 15 of the FCC Rules. Operation is subject to the following two conditions: (1) This device may not cause harmful interference, and (2) this device must accept any interference received, including interference that may cause undesired operation.

ZKTeco Industrial Park, No. 26, 188 Industrial Road,

Tangxia Town, Dongguan, China.

Phone :+86 769-82109991

Fax :+86 755-89602394

www.zkteco.com

