

Quick Start Guide

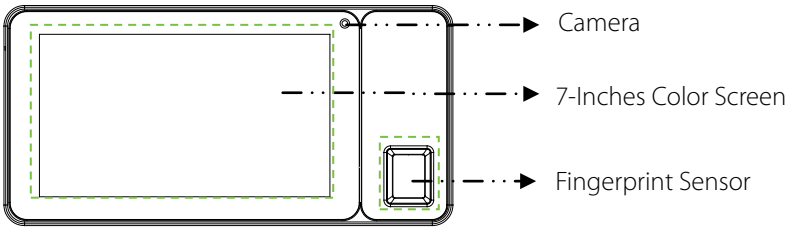
OB2000

Version: 1.0

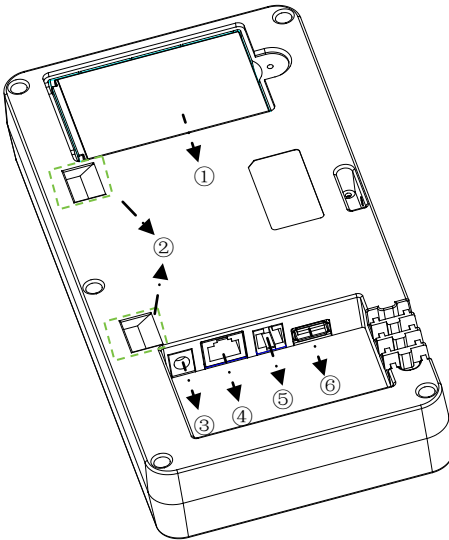
Date: July 2018

1. Overview

Front view

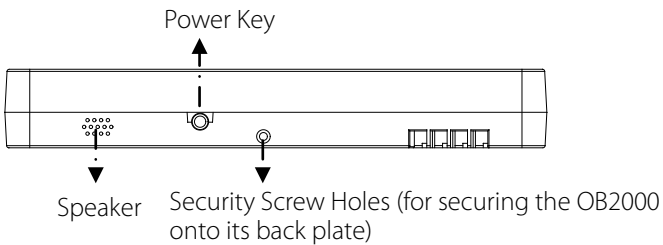


Rear view

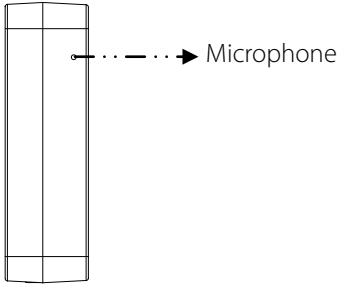


① Battery Box	② Hanging hole
③ Power Socket	④ Ethernet Interface
⑤ GPIO	⑥ USB Port

Bottom view

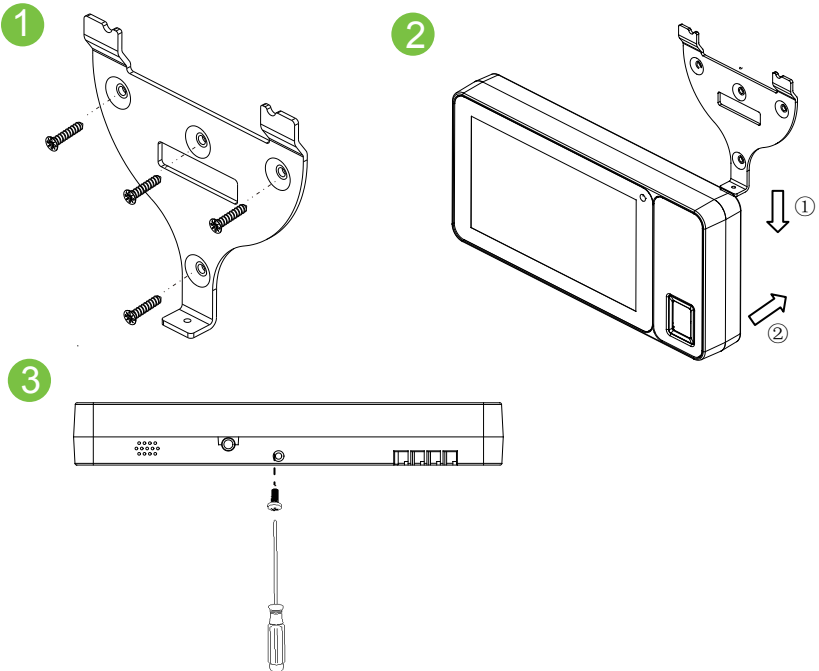


Left Side View

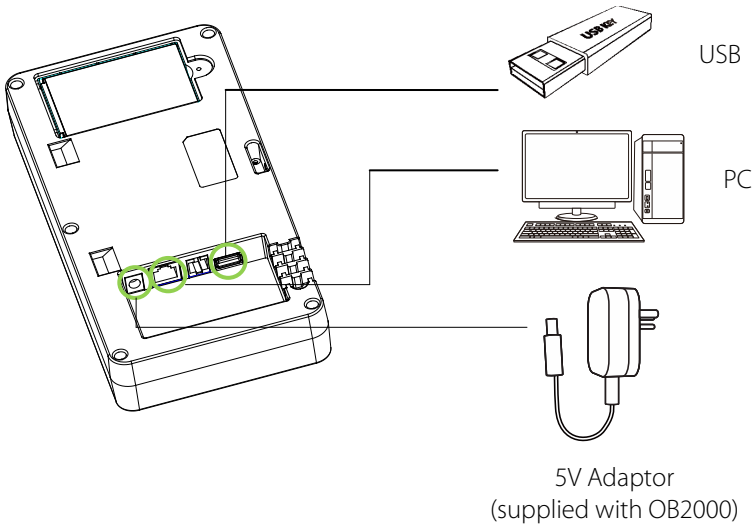


2. Mounting the OB2000 on Wall

- (1) Fix the OB2000 back plate onto wall using wall mount screws. The recommended installation height is 1.45 meters.
- (2) Connect the OB2000 to its back plate.
- (3) Use security screws to fasten the OB2000 to back plate.

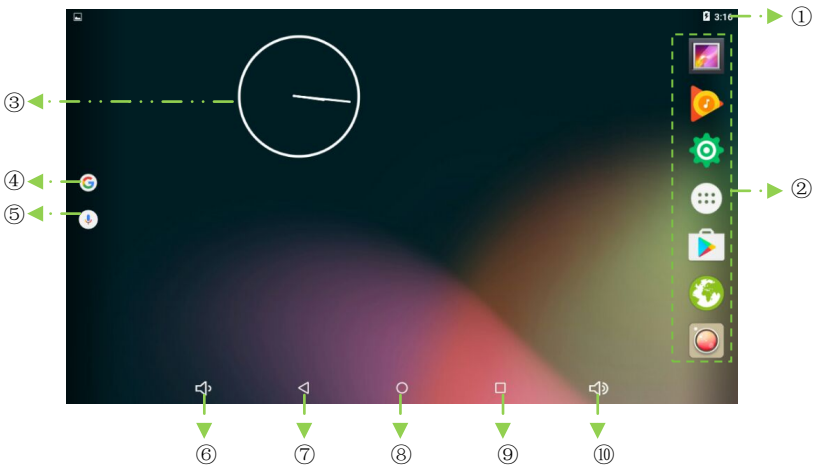


3. Wiring



4. Basic Operation

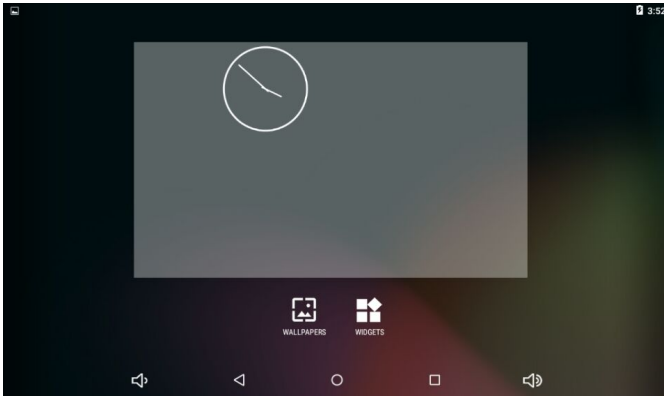
4.1 Initial Interface



①Status Bar	②Applications
③Clock	④Google Search
⑤Voice Search	⑥Turn down the volume key
⑦Backspace key	⑧Home key
⑨Background key	⑩Turn up the volume key

4.2 Add Desktop Widgets

1) Long press on the desktop, the following interface appears:



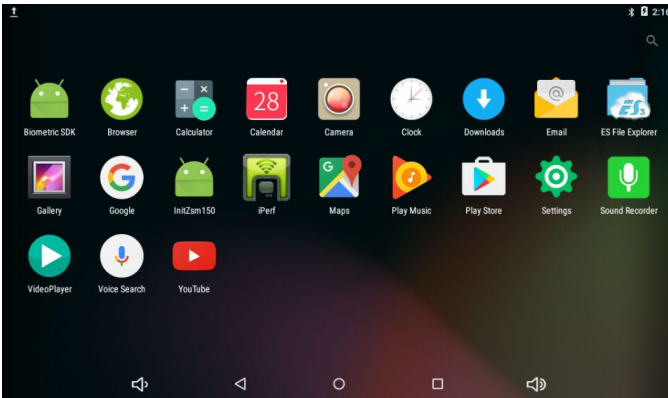
2) Click the WIDGETS icon, touch and hold to pick up a widget. And drag the widget to the desktop.

Note: If you want to delete a widget on the desktop, also long press the icon and drag it to the X area. The widget will be deleted.

4.3 Main Interface

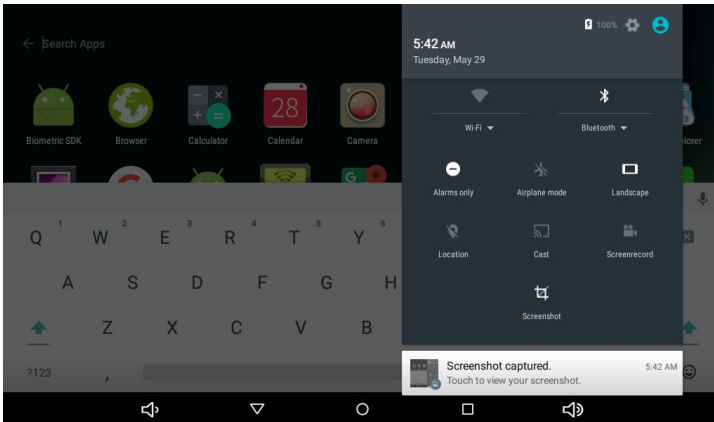
Click  icon to enter to the main interface. You will see all the applications on it.

Click  icon to enter the **Settings** interface. You can set the Wireless&networks, Device, Personal and System.



4.4 Quick Settings and Notifications

Long press the status bar and slide down it. It will show the recent notifications that have not been read. Also you can quickly set functions such as Volume, Wi-Fi, Bluetooth, Airplane mode, Landscape, Screenshot and so on.



FCC Caution:

Any changes or modifications not expressly approved by the party responsible for

compliance could void the user's authority to operate the equipment.

This device complies with part 15 of the FCC Rules. Operation is subject to the following two conditions: (1) This device may not cause harmful interference, and (2) this device must accept any interference received, including interference that may cause undesired operation.

Note: This equipment has been tested and found to comply with the limits for a Class B digital device, pursuant to part 15 of the FCC Rules. These limits are designed to provide reasonable protection against harmful interference when the equipment is operated in a commercial environment. This equipment generates, uses, and can radiate radio frequency energy and, if not installed and used in accordance with the instruction manual, may cause harmful interference to radio communications. Operation of this equipment in a residential area is likely to cause harmful interference in which case the user will be required to correct the interference at his own expense.

This equipment complies with FCC radiation exposure limits set forth for an uncontrolled environment. This equipment should be installed and operated with minimum distance 20cm between the radiator & your body.

This transmitter must not be co-located or operating in conjunction with any other antenna or transmitter.

ZK Building, Wuhe Road, Gangtou, Bantian, Buji
Town, Longgang District, Shenzhen China 518129
Tel: +86 755-89602345
Fax: +86 755-89602394
www.zkteco.com

