

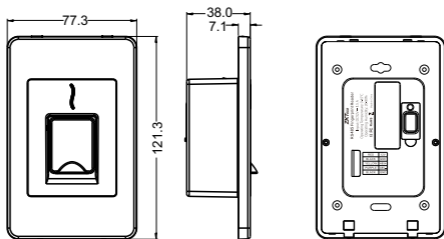
Installation Guide

FR1500S

Version: 1.0

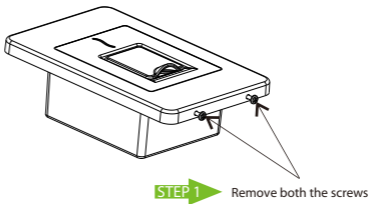
Installation

Dimensions(mm)

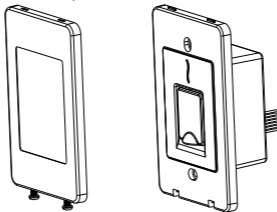


Note: Not all the devices have the fingerprint cover. The real product prevails.

Procedure to be followed before installation

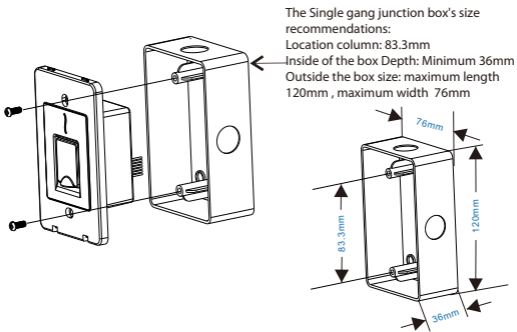


STEP 2 → Take out the front panel as shown below



Method 1: Mounting on the standard Single gang junction box

Lay the cables from the desired hole in Single gang junction box and fix the machine part to the box part.



Method 2: Mounting inside the wall

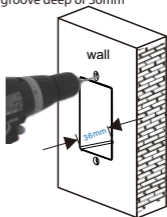
STEP 1

Place the mounting sticker to the place where device needs to be installed



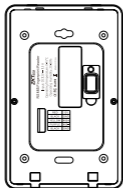
STEP 2

Drill fixing holes and dig mounting groove deep of 36mm



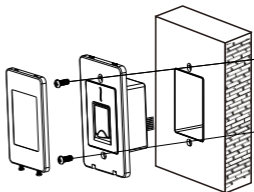
STEP 3

If cables need to be laid from behind then it must be done before installing



STEP 4

Install the device with the screws



STEP 5

After installing the back plate attach the machine part in the same reverse manner as shown in previous page