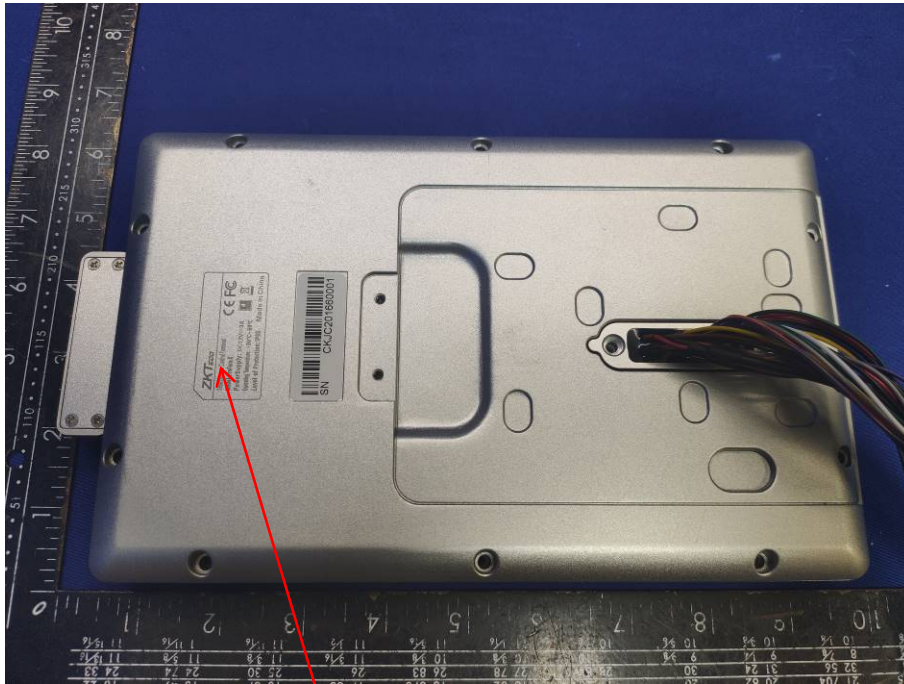


Label and label location



ZKTeco

Smart Identification Terminal

Model : ProFace X Input: 12V = 3A

Operating Temperature: 0°C - 50°C

Operating Humidity: 20%-80%

FCC ID: 2AJ9T-8TD

This device complies with part 15 of the FCC Rules. Operation is subject to the following two conditions: (1) This device may not cause harmful interference, and (2) this device must accept any interference received, including interference that may cause undesired operation.

FCC CE



Made in China