

# Antenna Specifications

**Product name:** MF Antenna

**Product**

**model:** KF1000-MF (T366)

**Original**

**model:** KF1000-MF (T366)

**P/N:** C15060038

**Specification** MF antenna for KR1000 Series/KF1000-MF (T366)

**:** 30mm\*11mm\*0.8mm Length 50±10mm

**Sample date:** 2022.05.23

**Sample qty.:** 8 PCS

Supplier confirmation	Compilation	Software engineer	Hardware engineer
Customer confirmation	Chief Tester		Verification

Add:	Rm1004, 10 <sup>th</sup> Floor, Block B, Building 3, Cloud Park, Bantian, Longgang District, Shenzhen, Guangong Province, China. Zip code: 518129		
QQ:	3005026195	Mobile:	13424153481
Email:	Xiangmuguanli1@zkrfid.com		
Contact:	Tang Riyan		

## KF1000-MF (T366) MF Antenna

### 1. Basic Characteristics and Application Areas

#### 1.1. Basic Characteristics:

RF antenna has two roles: 1. Provide RF field to activate the card; 2. Receive the card to reply to the data; RF antenna practical application process according to the structure of the antenna dimensions and the need for the sense of the value of the antenna to determine the parameters of the antenna; specific according to the actual environment to make adjustments;

#### 1.2. Applications :

Can be widely used in radio frequency card reader class host computer

### 2. Technical Parameters

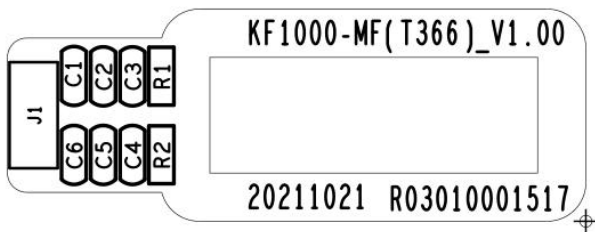
#### 2.1 Basic technical parameters:

Model	KF1000-MF (T366)
PCB Size	L*W: 30*11MM (±0.1MM)
PCB Thickness	0.8±0.1MM
PCB MATERIAL	FR-4
PCB Version	KF1000-MF (T366) _V1.00_20211021
Cable Length	50MM±10MM
Card support	CPU / S70 / S50/ IC Keyfob / Desfire card / MF 7-byte card
Voltage	5V (±5%)
Applicable Models	Application for KF1000 series IC08 module
Test environment	Installation test, room temperature 25°C-30°C, humidity: 85%RH
Work frequency	13.56MHZ
wiring connector	4P1.25

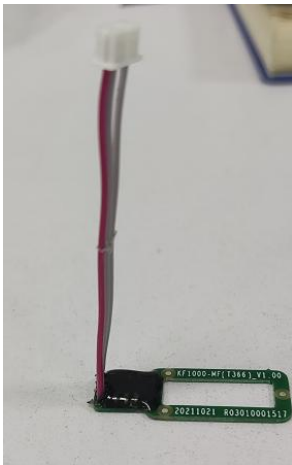
## 2.2 Swipe card distance

No	Card type	Distance L	Noted
1	S50	0~L: $L \geq 2\text{CM}$	Remarks: 0~L ( $L \geq L_{cm}$ ) (actual distance is related to the card used and the application environment)
2	S70	0~L: $L \geq 2\text{CM}$	
3	CPU (FM1208)	0~L: $L \geq 2\text{CM}$	
4	IC Keyfob	0~L: $L \geq 1\text{CM}$	
5	Desfire Card	0~L: $L \geq 1\text{CM}$	
6	MF 7-byte card	0~L: $L \geq 2\text{CM}$	

## 3. Designator



## 4. Real product picture



Connection cable position changed to 90 degrees to fix the cable

## 5. Technician Contacts

Name: Cao Jianbao

Tel: 18681498379

QQ:2853815392

Name: Huang Kaiyu

Tel: 13066865845

QQ:3005371972