

## Appendix C

Date: 2018-05-25

Report Number: 60.792.18.004.01

Model No.: HG04125A-US

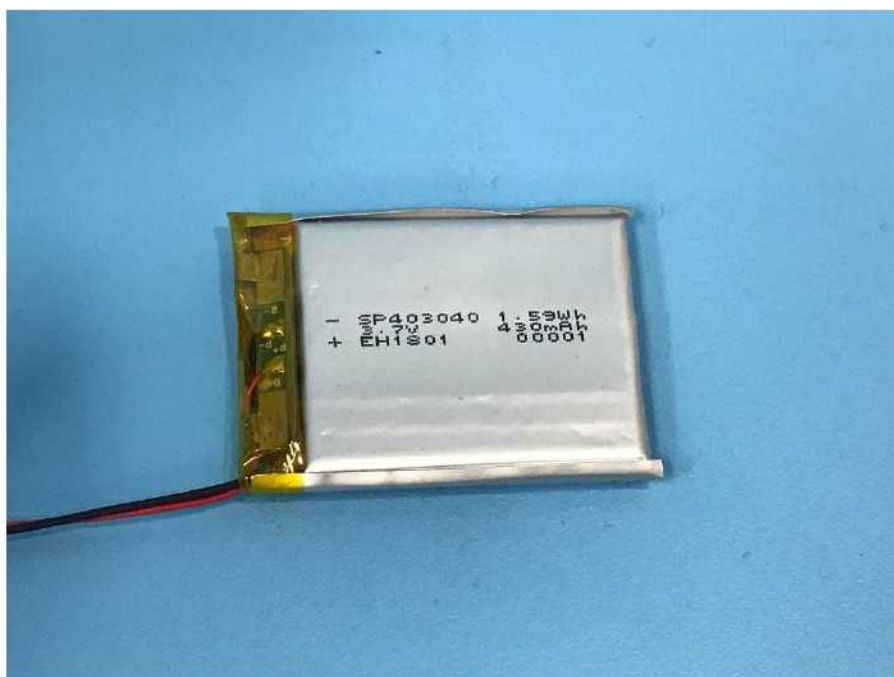


## Appendix C

Date: 2018-05-25

Report Number: 60.792.18.004.01

Model No.: HG04125A-US

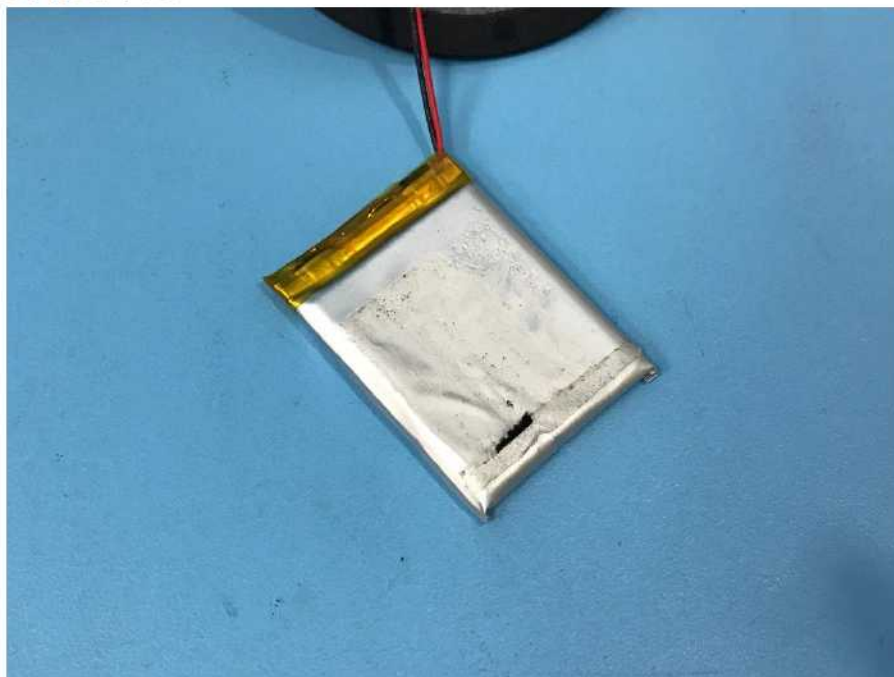


## Appendix C

Date: 2018-05-25

Report Number: 60.792.18.004.01

Model No.: HG04125A-US



Page 3 of 7

TÜV SÜD Hong Kong Ltd.

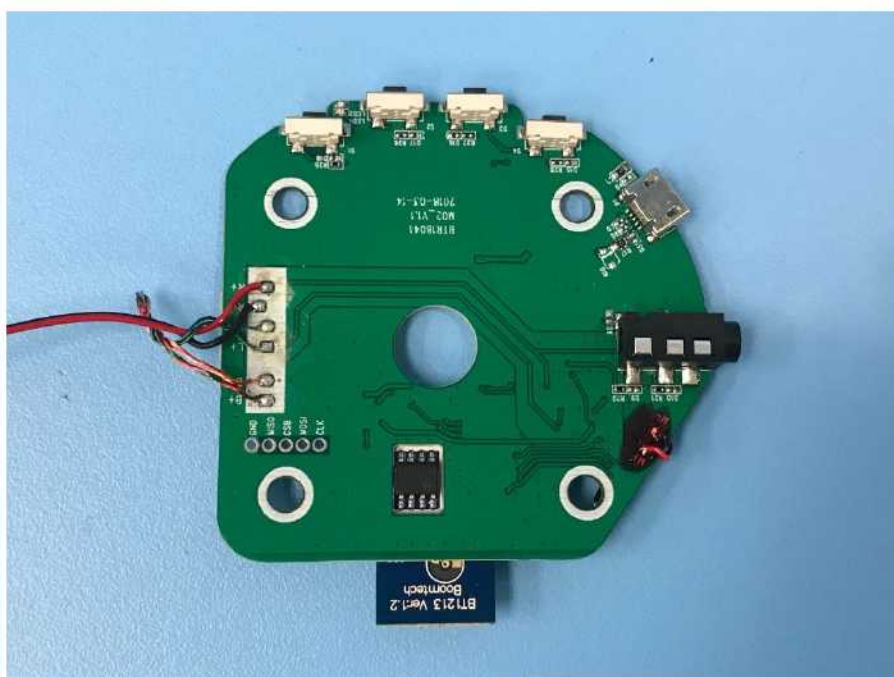
3/F, West Wing, Phase 2, 10 Science Park West Avenue, Hong Kong Science Park, Shatin, Hong Kong

## Appendix C

Date: 2018-05-25

Report Number: 60.792.18.004.01

Model No.: HG04125A-US



Page 4 of 7

TÜV SÜD Hong Kong Ltd.

3/F, West Wing, Phase 2, 10 Science Park West Avenue, Hong Kong Science Park, Shatin, Hong Kong

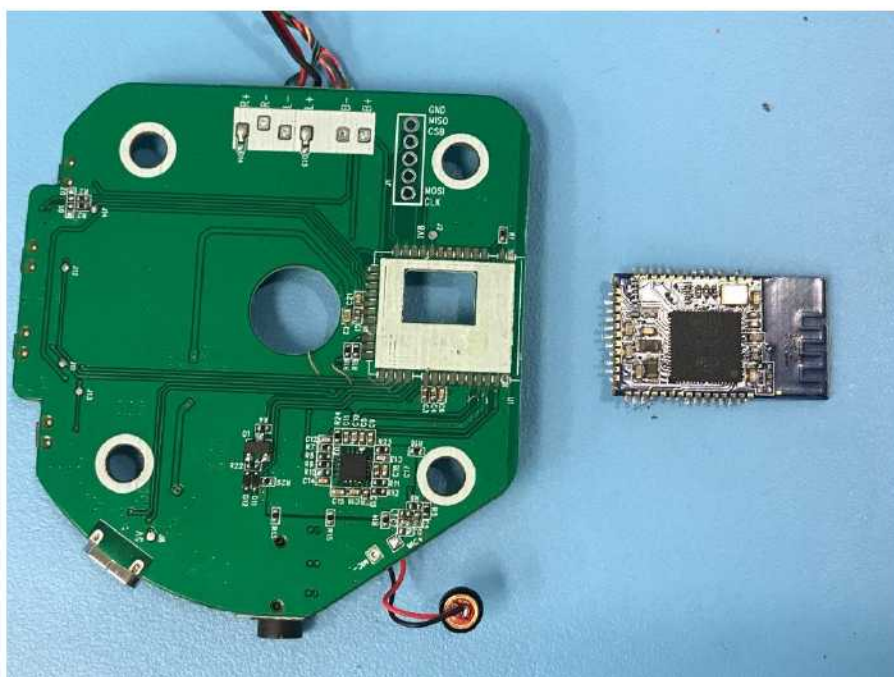
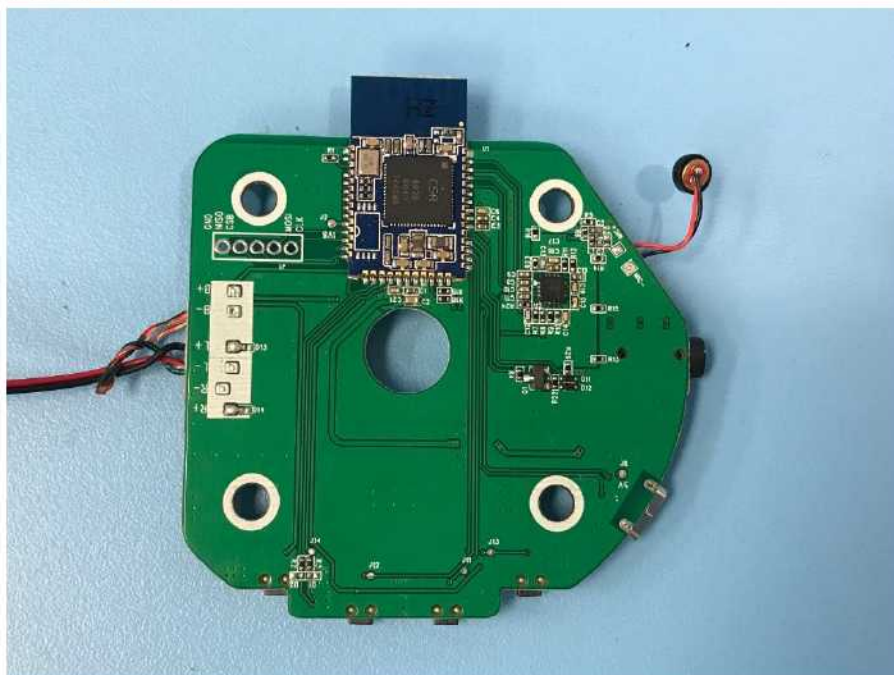


## Appendix C

Date: 2018-05-25

Report Number: 60.792.18.004.01

Model No.: HG04125A-US



## Appendix C

Date: 2018-05-25

Report Number: 60.792.18.004.01

Model No.: HG04125A-US



Page 6 of 7

TÜV SÜD Hong Kong Ltd.

3/F, West Wing, Phase 2, 10 Science Park West Avenue, Hong Kong Science Park, Shatin, Hong Kong

## Appendix C

Date: 2018-05-25

Report Number: 60.792.18.004.01

Model No.: HG04125A-US



Page 7 of 7

TÜV SÜD Hong Kong Ltd.

3/F, West Wing, Phase 2, 10 Science Park West Avenue, Hong Kong Science Park, Shatin, Hong Kong