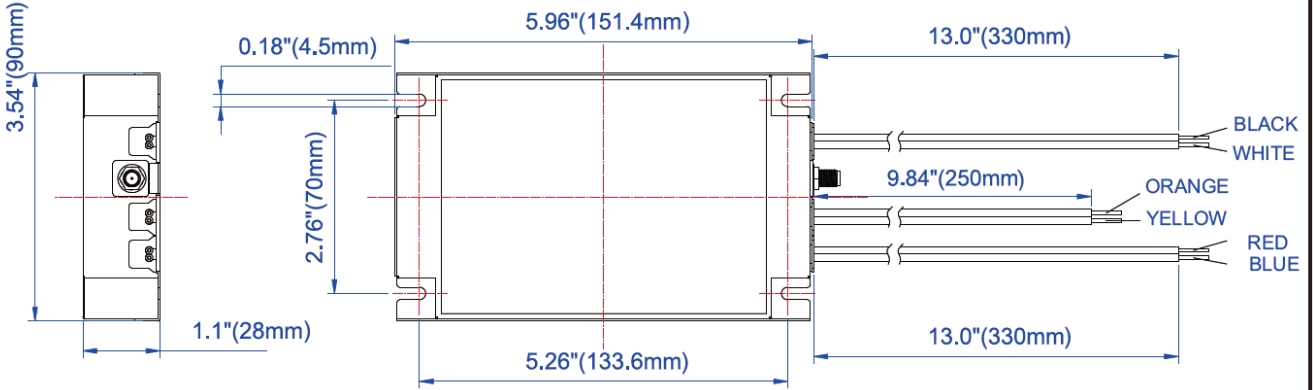


MECHANICAL DATA



NOTE :

- 1.This Driver Must Be Installed By A Licensed Electrician
- 2.This Driver Must Be Grounded

Tolerance=±0.02"

WIRING DIAGRAMS

FCC ID:2AJ9LT1R1UNV210P60C

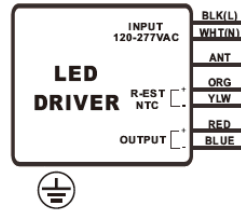
This device complies with Part 15 of the FCC Rules.

Operation is subject to the following two conditions:

- 1.This device may not cause harmful interference, and
- 2.This device must accept any interference received, including interference that may cause undesired operation.

Changes or modifications not expressly approved by the party responsible for compliance could void the user's authority to operate the equipment.

FCC Radiation Exposure Statement: This equipment complies with FCC radiation exposure limits set forth for an uncontrolled environment. This equipment should be installed and operated with a minimum distance of 20cm between the radiator and your body.This transmitter must not be co-located or operating in conjunction with any other antenna or transmitter.



INPUT SIDE	LENGTH
WHITE	13" (330mm)
BLACK	13" (330mm)

Programming SIDE	LENGTH
ORANGE	9.84" (250mm)
YELLOW	9.84" (250mm)

OUTPUT SIDE	LENGTH
RED	13" (330mm)
BLUE	13" (330mm)

TPSB-100:

Only for luminaire manufacturer not for end user.

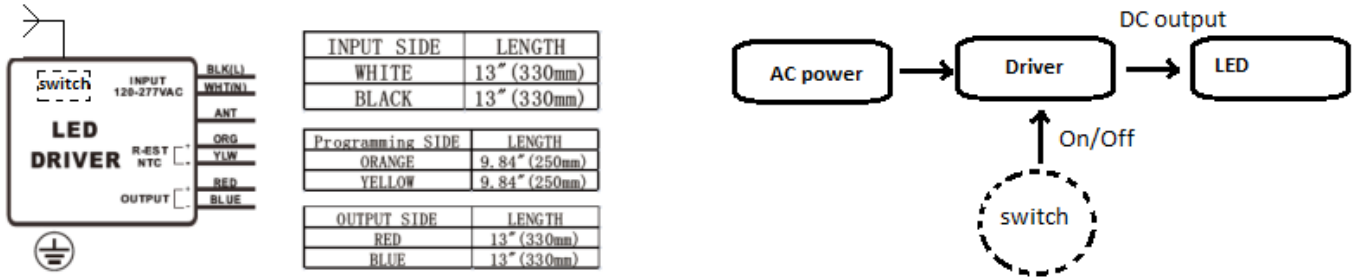
For detail information on using TPSB-100

Driver Programming Box, please consult

user's manual of TPSB-100.



Function of the device :



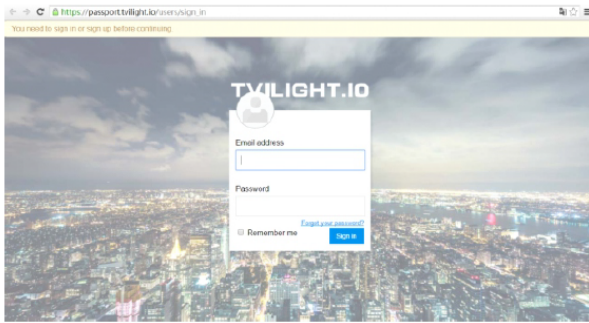
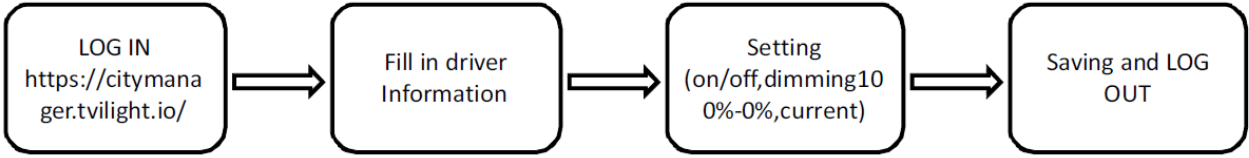
REI/EMI:FCC part 15 B Class B

External Antenna -- Specifications:

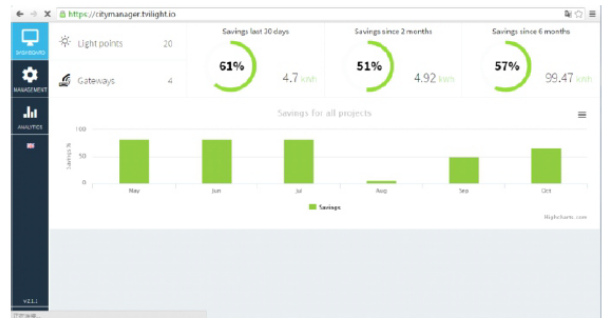
WBT1R1UXX01, through-hole mount antenna, from Fulham Inc.
 Siretta Tango 24, 3dBi, IP67, through-hole mount. SMA MALE RP connector. Siretta, UK.

Wireless Control:

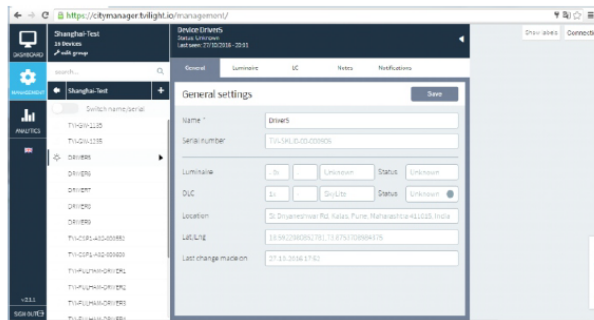
The user could access Twilight City Manager console, a web-based Lighting Management Software to remotely monitor, manage and control entire lighting infrastructures with ease. It can be accessed from any computer/smart phone/tablet with an internet connection by navigating to <https://citymanager.tvilight.io/>



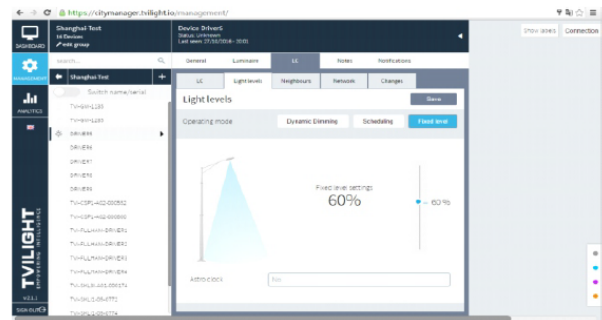
Access https://passport.twilight.io/users/sign_in



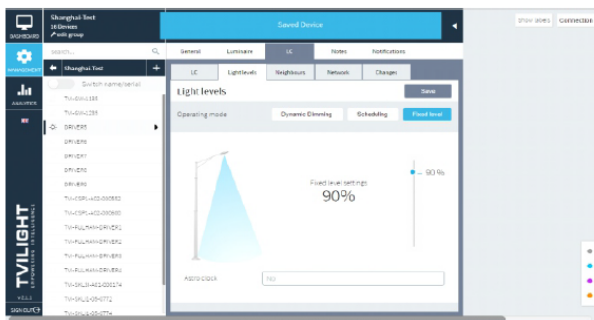
Log in



Fill in and save the information of driver



Customized Setting by moving Scroll bar



Saved and done