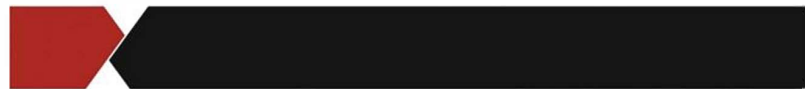


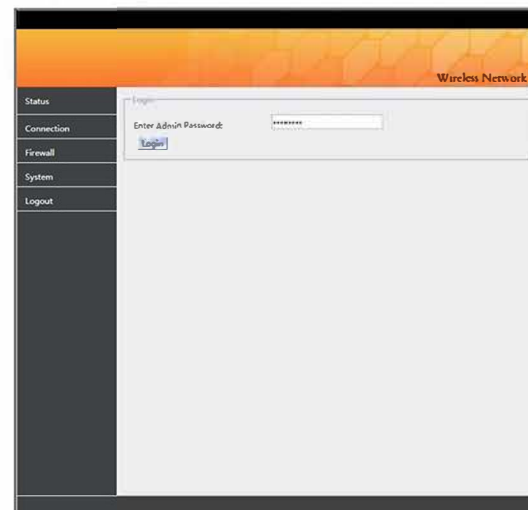
4G Router User Manual



4G Router Manual

Chapter 1 Login.....	2
Chapter 2 Status.....	2
2.1 Overview	2
2.1.1 Hardware status.....	2
2.1.2 Timestatus.....	2
2.1.3 LAN port.....	2
2.1.4 4G Network.....	3
2.1.5 DNS Server.....	3
2.1.6 WAN Port.....	3
2.2 Connected Hosts.....	3
2.3 Connection List.....	3
Chapter 3 Connection.....	4
3.1 Basic Settings.....	4
3.1.1 Internet/WAN.....	4
3.1.2 Local Network/LAN.....	6
3.1.3 Wireless.....	6
3.2 DHCP Server.....	6
3.2.1 DHCP&Static IPs.....	6
3.3 APN.....	7
3.4 Ping Watchdog.....	7
Chapter 4 Firewall.....	8
4.1 Connection Limits&Restrictions.....	8
Chapter 5 System.....	9
5.1 Router Access.....	9
5.2 Time.....	9
5.3 Restore.....	10
5.4 Update Firmware.....	10
5.5 Reboot.....	11
Chapter 6 Logout.....	11

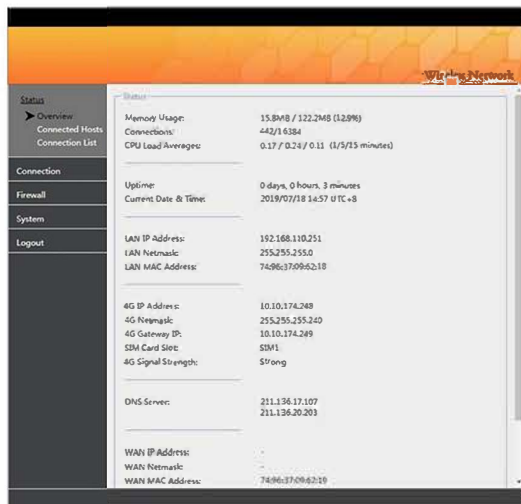
Chapter 1 Login



Log in to the computer network to automatically obtain an IP address.
Default IP address: 192.168.110.251, Default login password: password;

Chapter 2 Status

2.1 Overview



2.1.1 Hardware status

Memory usage, number of connections, and CPU usage (Timeline 1/5/15 minutes respectively).

2.1.2 Time status

System runtime and world time.

2.1.3 LAN port

LAN IP Address, LAN Netmask, LAN MAC Address.

2.1.4 G Network

4G IP Address, Netmask, Gateway IP, SIM Card Slot, Signal Strength.

Note: 4G router reads SIM1 (lower card slot) by default. When the 4G router is started, the Ping watchdog function detects network connectivity. If no response is received within the maximum time limit, 4G router will automatically restart and automatically switch to SIM2 (Upper card slot), continue to detect after reboot, until the network is back to normal. This process takes about 8-9 minutes, please be patient.

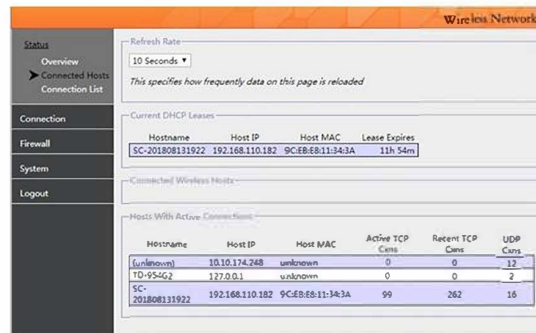
2.1.5 DNS Server

DNS Server

2.1.6 WAN Port (WAN port needs to be connected to the external network)

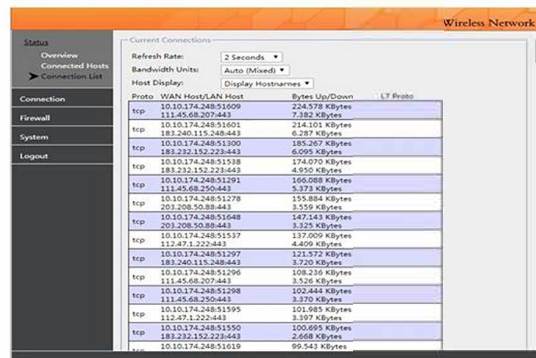
WAN IP Address, Netmask, MAC.

2.2 Connected Hosts



You can set the page refresh time to display DHCP lease user information, active users.

2.3 Connection List



1: You can set the page refresh time, you can modify the traffic data unit, display mode host name / IP.

Chapter 3 Connection

3.1 Basic settings

Wireless Network

Status

Connection

Basic

DHCP

APN

Ping Watchdog

Firewall

System

Logout

Internet / WAN

Connect Via: DHCP (Wired)

Current IP: [Monitor Lease / Renew](#)

Current Lease Expires: [1980.07.09 02:10](#)

Use Custom MAC Address: ☐ [1980.07.09 02:10](#)

Use Custom MTU: ☐ 1500

Local Network / LAN

Router IP: 192.168.110.251

Subnet Mask: 255.255.255.0

DNS Servers: Default DNS Servers Specified by ISP

☒ Allow [Names/ain/Domain](#) Resolution

☐ Force Clients To Use Router DNS Servers

Wireless

Wireless Mode: Access Point (AP)

Operation Mode: N+G+B

Channel Width: 40MHz (2nd chan. below)

Transmit Power: Max ☐ (0 ~ 28dBm)

Wireless MAC Filter: Disabled

Access Point SSID: Todaaar_4G

Wireless Channel: 11

3.1.1 Internet/WAN

DHCP (wired) - The WAN port connects to the upper-level route, and automatically obtains the external network resources allocated by the superior route to access the Internet, or dials the Internet using the 4G card*1.

Note: 4G SIM card loading instructions: 1. Make sure the SIM card supports the local operator network. 2. This product provides dual card slots (does not support dual SIM cards at the same time, and supports automatic switching of dial-up SIM after disconnected network). 3. The size of the SIM card is a standard card. When inserting, the oblique opening is inward and the contact is downward.

=====

Chapter 3 Connection

3.1 Basic settings

Wireless Network

Status

Connection

Basic

DHCP

APN

Ping Watchdog

Firewall

System

Logout

Internet / WAN

Connect Via: DHCP (Wired)

Current IP: [Monitor Lease / Renew](#)

Current Lease Expires: [1980.07.09 02:10](#)

Use Custom MAC Address: ☐ [1980.07.09 02:10](#)

Use Custom MTU: ☐ 1500

Local Network / LAN

Router IP: 192.168.110.251

Subnet Mask: 255.255.255.0

DNS Servers: Default DNS Servers Specified by ISP

☒ Allow [Names/ain/Domain](#) Resolution

☐ Force Clients To Use Router DNS Servers

Wireless

Wireless Mode: Access Point (AP)

Operation Mode: N+G+B

Channel Width: 40MHz (2nd chan. below)

Transmit Power: Max ☐ (0 ~ 28dBm)

Wireless MAC Filter: Disabled

Access Point SSID: Todaaar_4G

Wireless Channel: 11

3.1.1 Internet/WAN

DHCP (wired) - The WAN port connects to the upper-level route, and automatically obtains the external network resources allocated by the superior route to access the Internet, or dials the Internet using the 4G card*1.

Note: 4G SIM card loading instructions: 1. Make sure the SIM card supports the local operator network. 2. This product provides dual card slots (does not support dual SIM cards at the same time, and supports automatic switching of dial-up SIM after disconnected network). 3. The size of the SIM card is a standard card. When inserting, the oblique opening is inward and the contact is downward.

=====

The screenshot shows the 'Wireless Network' configuration page. The left sidebar has a 'Connection' section with 'Basic' selected. The main content area is divided into three sections: 'Connect Via', 'Local Network / LAN', and 'Wireless'. The 'Connect Via' section is expanded, showing 'Static IP (Wired)' selected. The 'Static IP' field is set to '10.1.1.10', 'Subnet Mask' is '255.255.255.0', and 'Gateway' is '127.0.0.1'. The 'Local Network / LAN' section shows 'Router IP' as '192.168.110.251', 'Subnet Mask' as '255.255.255.0', and 'DNS Servers' as 'Default: DNS Servers Specified by ISP'. The 'Wireless' section shows 'Wireless Mode' as 'Access Point (AP)', 'Operation Mode' as 'N+G+B', 'Channel Width' as '40MHz (2nd chan. below)', 'Transmit Power' as 'Max', and 'Wireless MAC Filter' as 'Disabled'. The 'Access Point SSID' is 'Todair 4G'.

Static IP(Wired)- Manually fill in the static IP address to obtain the upper-layer routing external network resources.

=====

The screenshot shows the 'Wireless Network' configuration page. The left sidebar has a 'Connection' section with 'Basic' selected. The main content area is divided into three sections: 'Connect Via', 'Local Network / LAN', and 'Wireless'. The 'Local Network / LAN' section is expanded, showing 'Router IP' as '192.168.110.251', 'Subnet Mask' as '255.255.255.0', and 'DNS Servers' as 'Default: DNS Servers Specified by ISP'. The 'Wireless' section shows 'Wireless Mode' as 'Access Point (AP)', 'Operation Mode' as 'N+G+B', 'Channel Width' as '40MHz (2nd chan. below)', 'Transmit Power' as 'Max', and 'Wireless MAC Filter' as 'Disabled'. The 'Access Point SSID' is 'Todair 4G'. The 'Wireless Channel' is '11', 'Encryption' is 'None', 'Broadcast SSID' is 'Enabled', and 'Wireless Client Isolation' is 'Disabled'. There are 'Save Changes' and 'Reset' buttons at the bottom.

3.1.2 Local Network/LAN

Users can modify the router IP, mask, DNS and other information.

Wireless Network

Status

Connection

Basic

DHCP

APN

Ping Watchdog

Firewall

System

Logout

DHCP

☒ LAN DHCP Server Enabled

DHCP range:

Start: 192.168.110.100

End: 192.168.110.250

Lease Time: 12 (hours)

Static IP

☐ Block MAC addresses assigned a static IP that connect from a different IP

Add Static IP Address:

Host name (optional):

MAC:

IP:

Add

Select Hostname/MAC From Currently Connected Hosts

Assigned Static IP Addresses:

Save Changes

Reset

3.1.3 Wireless

Users can modify the wireless status, including wireless mode, operation mode, Channel Width, power, broadcast SSID, channel, encryption/non-encryption, broadcast/non-broadcast.

Wireless MAC Filtering - Users can edit the MAC black/white list by themselves.

3.2 DHCP

3.2.1 DHCP&Static IPs

Users can open the DHCP server, range, lease time, and so on. Or customize the client IP.

3.3 APN

Wireless Network

Status

Connection

Basic

DHCP

APN

Ping Watchdog

Firewall

System

Logout

APN Configuration

Enable/Disable: Enabled

APN:

PIN Code:

Username:

Password:

☐ Display/Hidden

Authentication Type(gsm, chap, both, none):

IP-Stack Mode(IPV4, IPV6, IPV4V6):

PLMN Code(MCC+MNC):

Delay(No change recommended): 15 Seconds

Save Changes

Reset

Users can set according to the APN settings provided by the operator.

3.4 Ping Watchdog

Wireless Network

Status

Connection

Basic

DHCP

APN

Ping Watchdog

Firewall

System

Logout

Ping Watchdog

Address: qq.com

Interval: 2 Minutes

Save Changes

Reset

The "Ping Watchdog" function is a function of 4G router detection network connectivity. It sends a Ping packet to a specified address periodically. If the reply is received normally, the network is unobstructed. If no response is received within the maximum time limit, the 4G route will automatically restart. After the restart, the detection will continue until the network returns to normal.

Chapter 4 Firewall

4.1 Connection Limits&Restrictions

Wireless Network

Status

Connection

Firewall

Connection Limits

Restrictions

System

Logout

Connection Limits

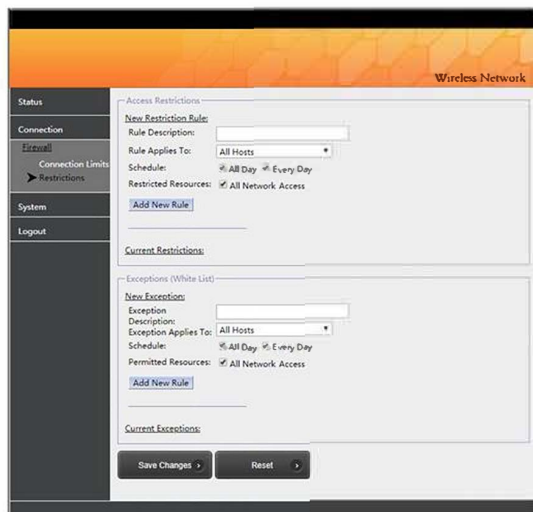
Max Connections: 16384 (max 16384)

TCP Timeout: 7640 seconds (max 3600)

UDP Timeout: 380 seconds (max 3600)

Save Changes

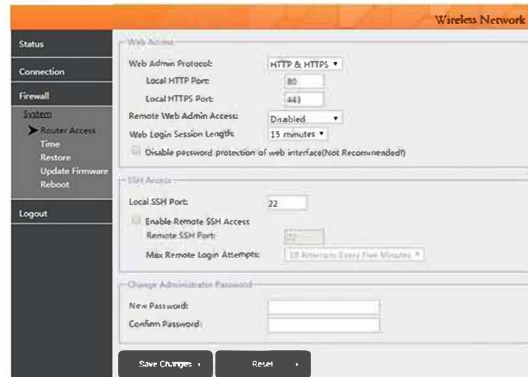
Reset



Users can set connection restrictions and access rules according to actual needs.

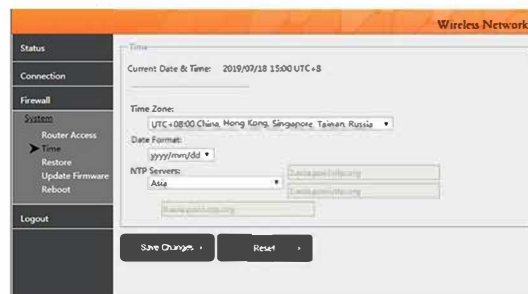
Chapter 5 System

5.1 Router Access



Users can modify the Web access rule settings, SSH access settings, and modify the login password.

5.2 Time



Set the corresponding time zone, date format and NTP (time) server. After the external network connection is successful, it will be calibrated according to the settings.

5.3 Restore



Web interface control to restore settings

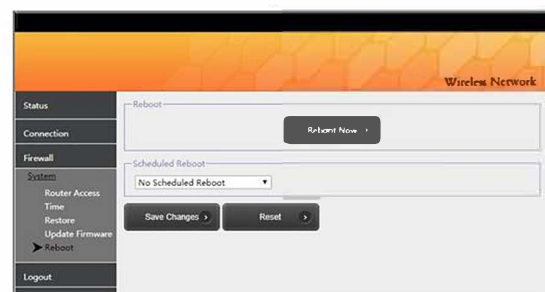
Hardware control to restore settings, long press the reset button for 8-10 seconds.

5.4 Update Firmware



Choose the firmware provided by the company to upgrade.

5.5 Reboot



Reboot now or schedule automatic reboot time.

Chapter 6 Logout

Execute to exit the current login status.

FCC Warning

This device complies with part 15 of the FCC rules. Operation is subject to the following two conditions:

- (1) this device may not cause harmful interference,
- (2) this device must accept any interference received, including interference that may cause undesired operation.

Changes or modifications not expressly approved by the party responsible for compliance could void the user's authority to operate the equipment.

NOTE: This equipment has been tested and found to comply with the limits for a Class B digital device, pursuant to part 15 of the FCC Rules. These limits are designed to provide reasonable protection against harmful interference in a residential installation. This equipment generates and can radiate radio frequency energy and, if not installed and used in accordance with the instructions, may cause harmful interference to radio communications. However, there is no guarantee that interference will not occur in a particular installation. If this equipment does cause harmful interference to radio or television reception, which can be determined by turning the equipment off and on, the user is encouraged to try to correct the interference by one or

more of the following measures:

- Reorient or relocate the receiving antenna.
- Increase the separation between the equipment and receiver.
- Connect the equipment into an outlet on a circuit different from that to which the receiver is connected.
- Consult the dealer or an experienced radio/TV technician for help.

Radiation Exposure Statement

This equipment complies with FCC radiation exposure limits for an uncontrolled environment. This equipment should be installed and operated with minimum distance 20cm between the radiator and your body.