

## CONNECTING THE DEVICE



**bHaptics Designer** | Web-based haptic feedback editing tool. Utilizing this tool, you can easily create a haptic feedback pattern without using a single line of code. Just like adding a subtitle to a video, you can add a haptic pattern to a video, a game, etc.



**bHaptics Player** | Desktop software, used for the optimization and control of your experience with TactSuit. Acting as a link between the device, application, and the bHaptics Designer, it controls the bluetooth connections, device settings, and more.



**bHaptics Plugin** | We support plugins for Unity3D and Unreal Engine, which can be found in the Asset Store and Marketplace. Please refer to the plugin manuals for how to use them. For any other SDKs, please contact us directly.

## BHAPTICS PLAYER

### 01 Downloading software

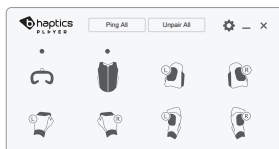
Downloads for the *bHaptics Player* software are available on our website, [www.bhaptics.com](http://www.bhaptics.com).

### 02 Pairing

With the device and PC bluetooth turned on, and with the BLE dongle plugged into the PC, if needed, find the Tactot icon on the Player interface. Hover over the icon and click on the 'pair' button to find and pair the device.

#### \*Unpairing

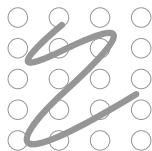
If a device has been paired before, it will connect automatically when turned on. To unpair, hover over the paired device's icon and find the 'unpair' button.



**\*Firmware update**   
When an update is available, a notification will pop up on the settings button.   
The update can be found in the settings tab.   
Keep the firmware updated to its latest version. For more information visit our site.

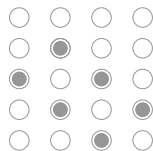
### 03 Testing haptic feedback

The draw function can be found in the settings tab.



#### Path Mode

Draw lines within the dotted section to create continuous haptic feedback.



#### Dot Mode

Select specific vibro-tactile motors to activate.

### 04 Enjoy and feel the next-generation haptic suit.

\*To use the Designer, enter the URL (<https://designer.bhaptics.com>) on your PC and Log-In. (Sign-up is required)



Contact our email for customer support. [support@bhaptics.com](mailto:support@bhaptics.com) / [www.bhaptics.com](http://www.bhaptics.com)

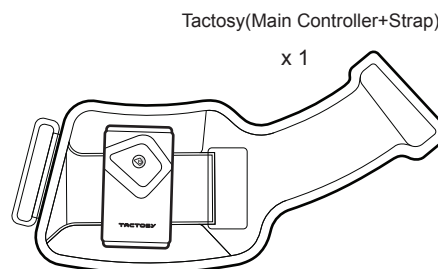
# TACTOSY

Wearable haptic sleeve

*Tactosy is a wearable sleeve that provides haptic feedback on your arm surface. Using a total of 20 discrete vibro-tactile motors, it creates a continuous form of tactile sensation. It aims to enhance users' experience in an audio-visually immersive environment.*

<b>Model</b>	Tactosy (BHSTS0100)
<b>Size</b>	5.5 - 14 inch (arm circumference)
<b>Weight</b>	250g
<b>Connection</b>	Bluetooth Low Energy technology
<b>Battery</b>	3.8V, 2900mAh, 11.02Wh
<b>Charging</b>	5V, 2A max

## UNBOXING



USB C-type Cable

x 1



Bluetooth Dongle

x 1



Manual

x 1

\*\* The number of Bluetooth dongle and USB cables is subject to change once purchased.

## PRECAUTIONS

Before using the Tactosy, please read this manual carefully.

### Safety and Warnings

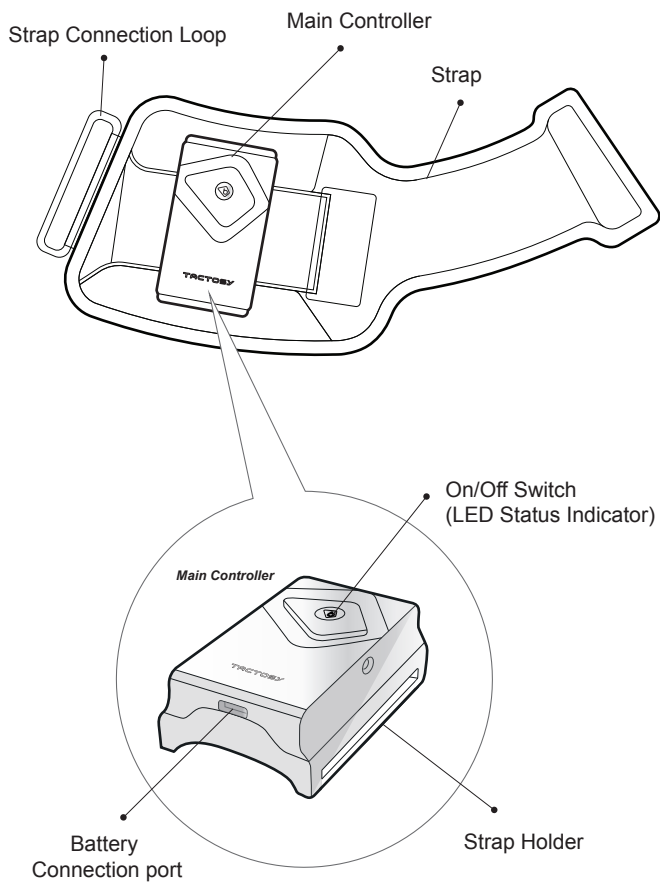
- \* Avoid contact with bare skin.
- \* Keep this product out of reach of small children.
- \* Do not fasten the body straps excessively.
- \* Never disassemble or modify the product.
- \* Do not apply excessive force to the button.
- \* Do not expose the device to extreme weather conditions.
- \* Put the device only on the arms and legs.

### Care and Handling

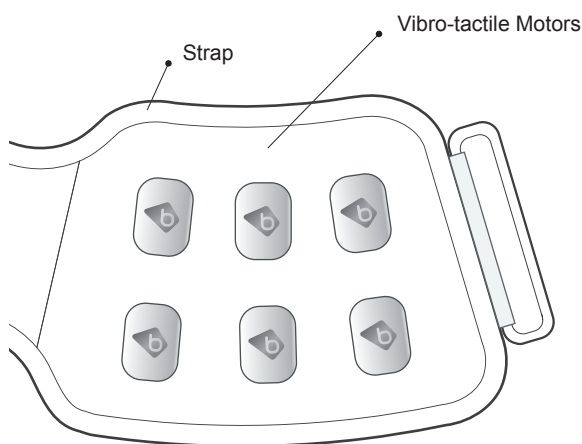
- \* Do not throw, drop, or expose the device to physical impact.
- \* Keep Tactosy away from liquids, it is not water-resistant.
- \* Do not store Tactosy in extreme cold or hot areas.
- \* Do not use chemicals or cleaning solvents on the device.
- \* Do not leave the device on charge when not in use, as overcharging may shorten the battery life.

## TACTOSY SLEEVE

### OUTER FACE



### FACE



#### \*Tips for use

- Using the bHaptics Player, users may test various vibration levels of vibro-tactile motors to optimize the Tactosy experience.
- Keep track of the remaining battery through the bHaptics Player to prevent sudden shutdown of the Tactosy.

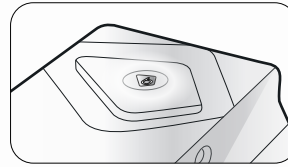
## CONNECT

STEP

1

### Connecting device

Turning Tactosy on.  
Press the On/Off button on the device to turn it on.  
The device will blink to indicate it is ready for bluetooth connection.



### LED Color Indication

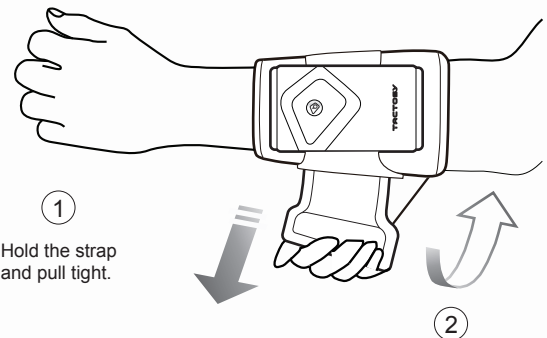
	BLE status	Charging
"RED" On	Sleep	O
"GREEN" blinking	Advertising	X
"RED/YELLOW" blinking	Advertising	O
"GREEN/BLUE/CYAN" On	Connected	X
"YELLOW/MAGENTA/WHITE" On	Connected	O

STEP

2

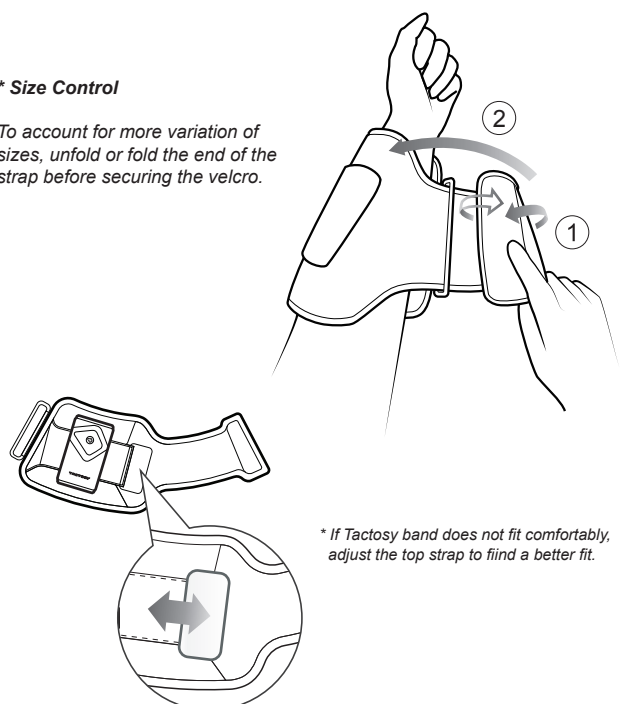
### Putting on the Tactosy

Put the Tactosy on your forearm and tighten the strap accordingly.  
For optimum experience, minimize the loose space between your arm and the strap.



#### \* Size Control

To account for more variation of sizes, unfold or fold the end of the strap before securing the velcro.



\* If Tactosy band does not fit comfortably, adjust the top strap to find a better fit.

## WARNING & PRECAUTION

This user manual is the basic manual for installation and operation and made for correct application of BHITS0100 wireless product with CDMA technology. All users who install and use this 2.4/5G Dual-band RF Transceiver Module products must read and understand the contents of this manual. In addition, user must observe all safety warnings and precautions in order to prevent from any problem or malfunction and to avoid from physical danger or damage to property of the customer.

Be sure to keep it after installation.

- This User manual describes only for our 2.4/5G Dual-band RF Transceiver Module products and can not be used without permission at any time.
- Please note that manufacturer is not responsible for any loss or damage caused by using this product for any purpose other than its intended use.
- Do not disassemble the equipment at any time to change the function or repair BHAPTICS INC. You must contact the place of purchase and seek professional help.
- Note: All BHITS0100 wireless products comply with the regulations for wireless digital devices in the KC, CE, and FCC regulations.
- BHAPTICS INC wireless CDMA products may generate, use and radiate radio frequency energy and, if not installed and used in accordance with the instructions, may cause interference with certain other wireless communications.
- BHITS0100 wireless products may cause interference in all wireless installation environments. If interference from radio (TV, radio) reception occurs due to the use of wireless CDMA products, the following problems may be solved.
  - 1) Change the direction or position of the transmit / receive antenna.
  - 2) Separate the distance between the wireless device and the receiver (at least 15 meters away).
  - 3) Connect the device to an outlet on a different line than the one to which the receiver is connected.
  - 4) Contact your dealer or a wireless device / CCTV technician for assistance.
  - 5) Wireless connection may be disconnected by various external wireless circumstances at each places.



### Precautions before Installation (Warnings and Cautions for Safety)

Be sure to read and understand the contents of this manual before using BHITS0100 Wireless products in order to eliminate safety and product problems and malfunctions. Please read this manual carefully to ensure that the product is used correctly to protect the user's physical safety and property damage.



**WARNING:** Caution is required and incorrect installation may cause problems.



**WARNING:** This is expected to result in death or serious injury.

**CAUTION:** This is a potential for injury or material damage to persons.

## Federal Communications Commission (FCC) Statement

15.21 You are cautioned that changes or modifications not expressly approved by the party responsible for compliance could void the user's authority to operate the equipment.

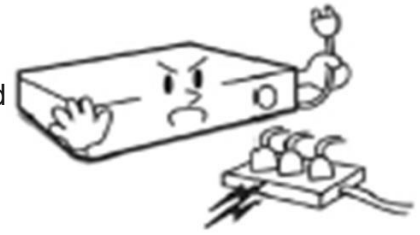
This device complies with Part 15 of the FCC Rules.  
Operation is subject to the following two conditions:

- 1) this device may not cause interference and
- 2) this device must accept any interference, including interference that may cause undesired operation of the device.

15.105(b) This equipment has been tested and found to comply with the limits for a Class B digital device, pursuant to part 15 of the FCC rules. These limits are designed to provide reasonable protection against harmful interference in a residential installation. This equipment generates, uses and can radiate radio frequency energy and, if not installed and used in accordance with the instructions, may cause harmful interference to radio communications. However, there is no guarantee that interference will not occur in a particular installation. If this equipment does cause harmful interference to radio or television reception, which can be determined by turning the equipment off and on, the user is encouraged to try to correct the interference by one or more of the following measures:

- Reorient or relocate the receiving antenna.
- Increase the separation between the equipment and receiver.
- Connect the equipment into an outlet on a circuit different from that to which the receiver is connected.
- Consult the dealer or an experienced radio/TV technician for help.

The input voltage of wireless BHTTS0100 products should be connected 3.3V DC and the input current should be supplied more than 800mA. The power outlet must be grounded and never used with a heating device, air conditioner, magnetic field and radio wave generator Never use it with an electric motor, a generator, an antenna using another frequency, or a radio wave generator.



To prevent damage caused by lightning accident or external electric shock, be sure to use protective equipment or protection device together.



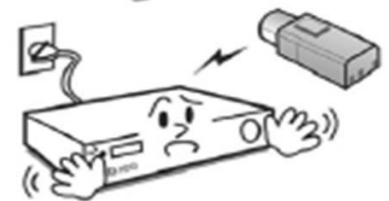
Never disassemble or disassemble the wireless BHTTS0100 product, and do not repair or modify it by yourself for any reason.

\*It may cause fire and electric shock.

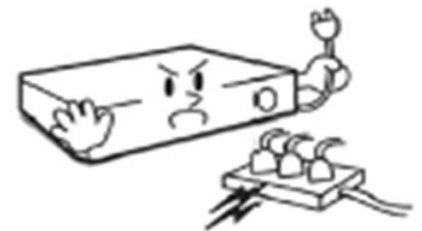


Be sure to turn off the power of the wireless BHTTS0100 device before connecting the camera or antenna, and never connect additional equipment while the product is running. Connect all equipment and devices, then power on.

\*It may cause fire, electric shock and personal injury.



The input voltage of wireless BHTTS0100 products should be connected 3.3V DC and the input current should be supplied more than 800mA. The power outlet must be grounded and never used with a heating device, air conditioner, magnetic field and radio wave generator Never use it with an electric motor, a generator, an antenna using another frequency, or a radio wave generator.



Wireless BHTTS0100 products should never be installed in places with high humidity, dust, heat, etc. Be sure to check environment of installation site beforehand to prepare measures for protection against moisture, water and heat.

\* It may cause fire, electric shock, lightning accident, personal injury.



In any of the following cases, immediately turn off the power to the unit, and then contact the place of purchase for repair.

- 1) If the power supply, connector, or outer shape is damaged.
- 2) When rain or water enters the equipment
- 3) If liquid has been spilled on the device or an abnormal substance
- 4) If the unit does not operate as described in this manual (operation may be damaged if operated in a manner other than those specified in the Manual).
- 5) If the unit is dropped or thrown, the product is damaged.
- 6) If there is a sharp change in performance
- 7) Damage caused by natural disasters such as lightning, user mistakes, errors or carelessness will be repaired by the user at their own expense even during the warranty period.