



## PTCRB Project 79233

### MFAST-A-010-2 Rev B Product Certification

### Exhibit B2 – Internal Photos of MFAST-A-010-2 Rev B

**SHORT TERM CONFIDENTIALITY – This notice expires 180 days from grant issue date.**

**WARNING - PROPRIETARY RIGHTS NOTICE**

This document is the property of Pratt & Whitney Canada Corp. ("P&WC"). You may not possess, use, copy or disclose this document or any information in it, for any purpose, including without limitation to design, manufacture, or repair parts, or obtain TCCA, FAA or other government approval to do so, without P&WC's express written permission. Neither receipt nor possession of this document alone, from any source, constitutes such permission. Possession, use, copying or disclosure by anyone without P&WC's express written permission is not authorized and may result in criminal or civil liability.

**This document contains confidential business information voluntarily provided to the Government and protected from further disclosure pursuant to 18 U.S.C. § 1905 and 5 U.S.C. § 552(b) (4). If the Government intends to disclose any of this information, written notice must be given to: the Vice President – Counsel and Corporate Secretary, Pratt & Whitney Canada Corp., 1000 Marie-Victorin (01BE5), Longueuil, Quebec J4G 1A1.**

### Product Designation:

Manufacturer: Pratt & Whitney Engine Services, Norwood  
249 Vanderbilt Avenue  
Norwood, MA 02062 USA

Marketing Name: DCTU (Data Collection & Transmission Unit)

HVIN- Part #: MFAST-A-010-2

FCC ID: 2AJ6A-DCTU1

IC\_ID: 22451-DCTU1

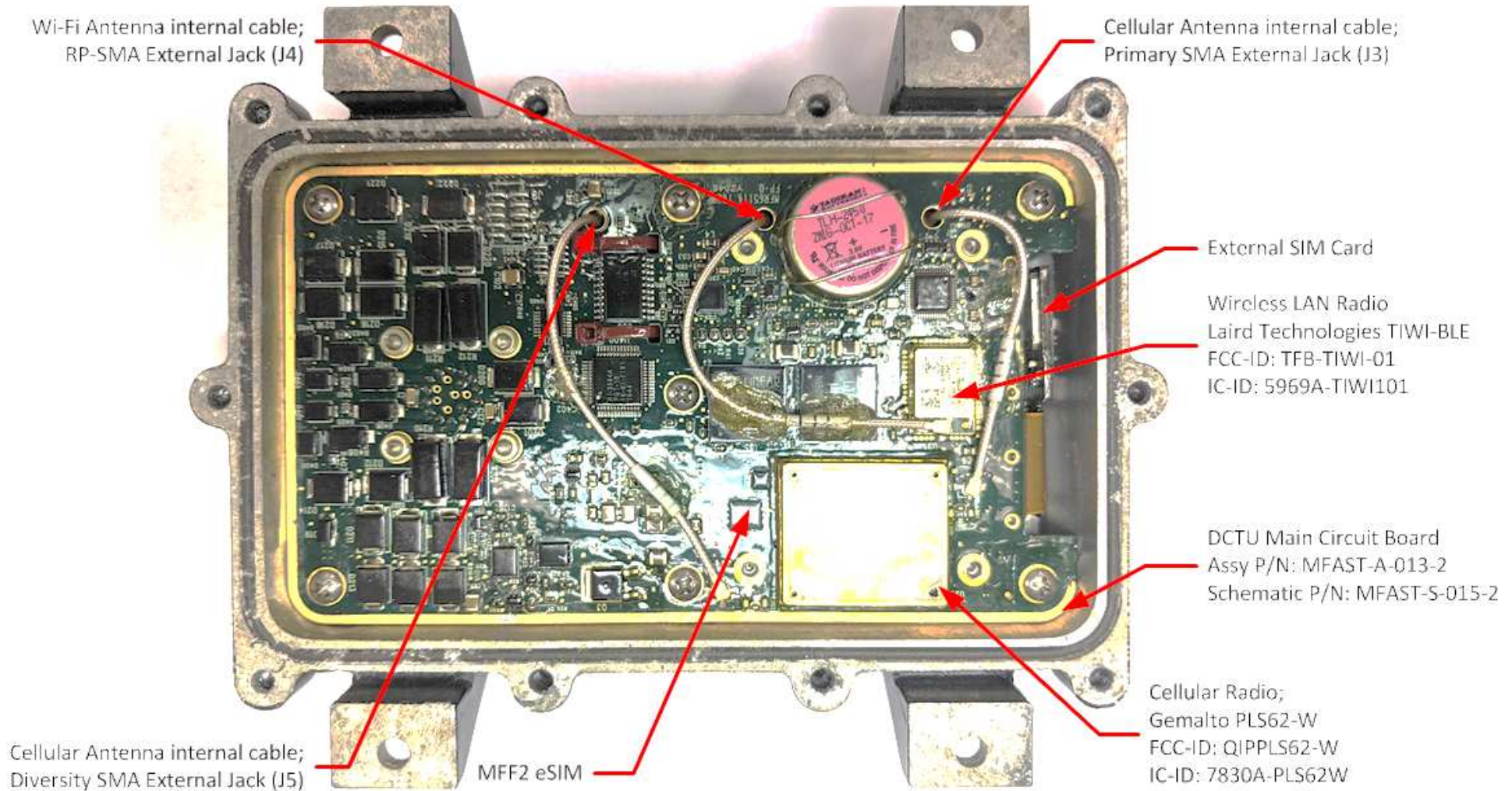
### Internal Photos:

The MFAST / DCTU product referenced in this document includes the Printed Circuit Board (PCB) and associated interconnect cables that become the internal workings of the MFAST-A-010-2 Rev B product.

The following includes photos of the product sub-assemblies:

- 1) Full internal Assembly with cables
- 2) DCTU Circuit board (Top View)
- 3) DCTU Circuit board (Bottom View)

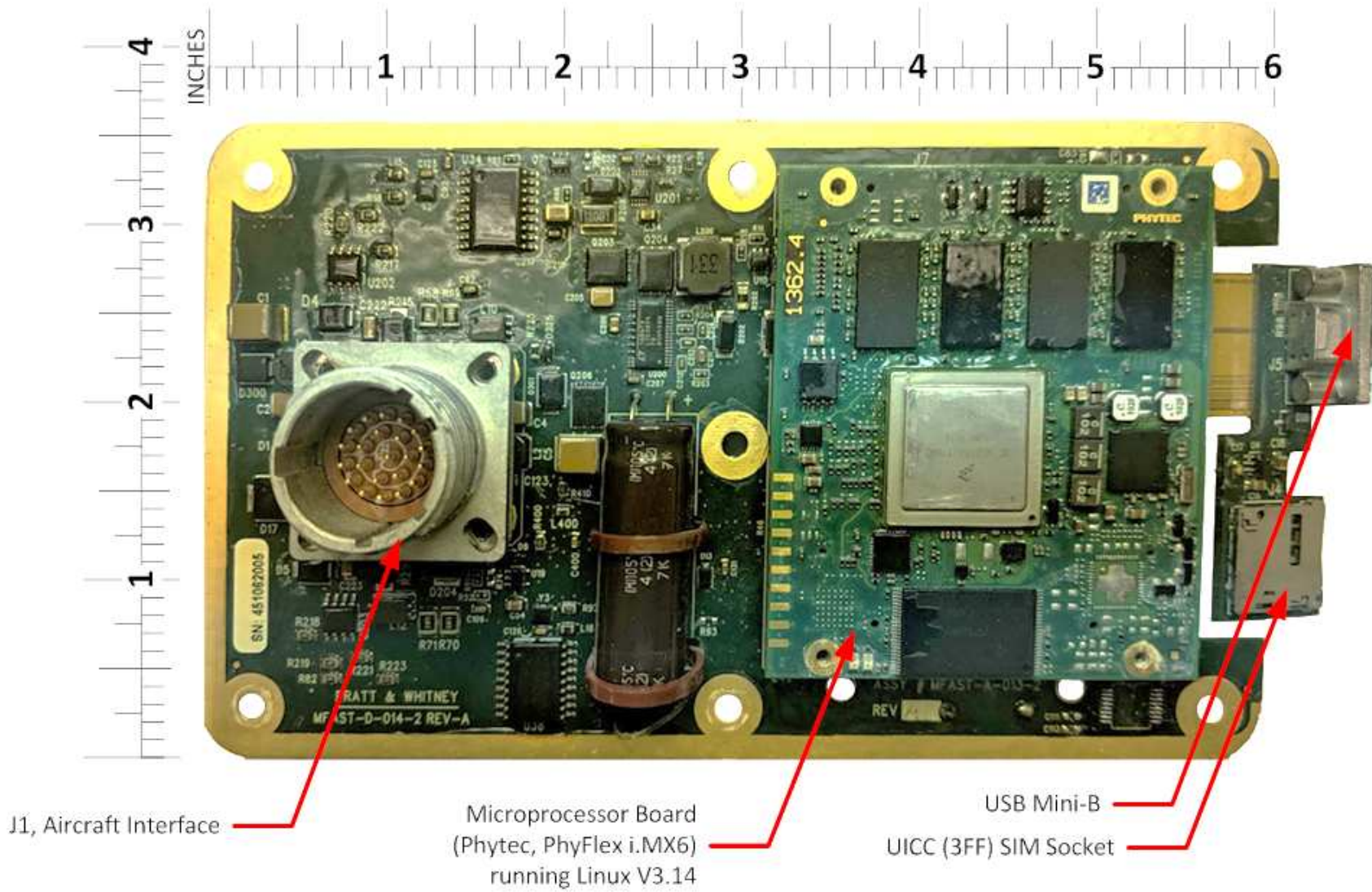
**Figure 1 - MFAST-A-010-2 / DCTU - Full internal assembly with cable interconnects**





**Figure 2 - MFAST-A-010-2 / DCTU Internal Photos**

DCTU Circuit Board (Top View): P/N: MFAST-A-013-2, Schematic P/N MFAST-S-015-2

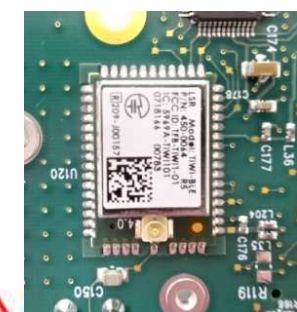
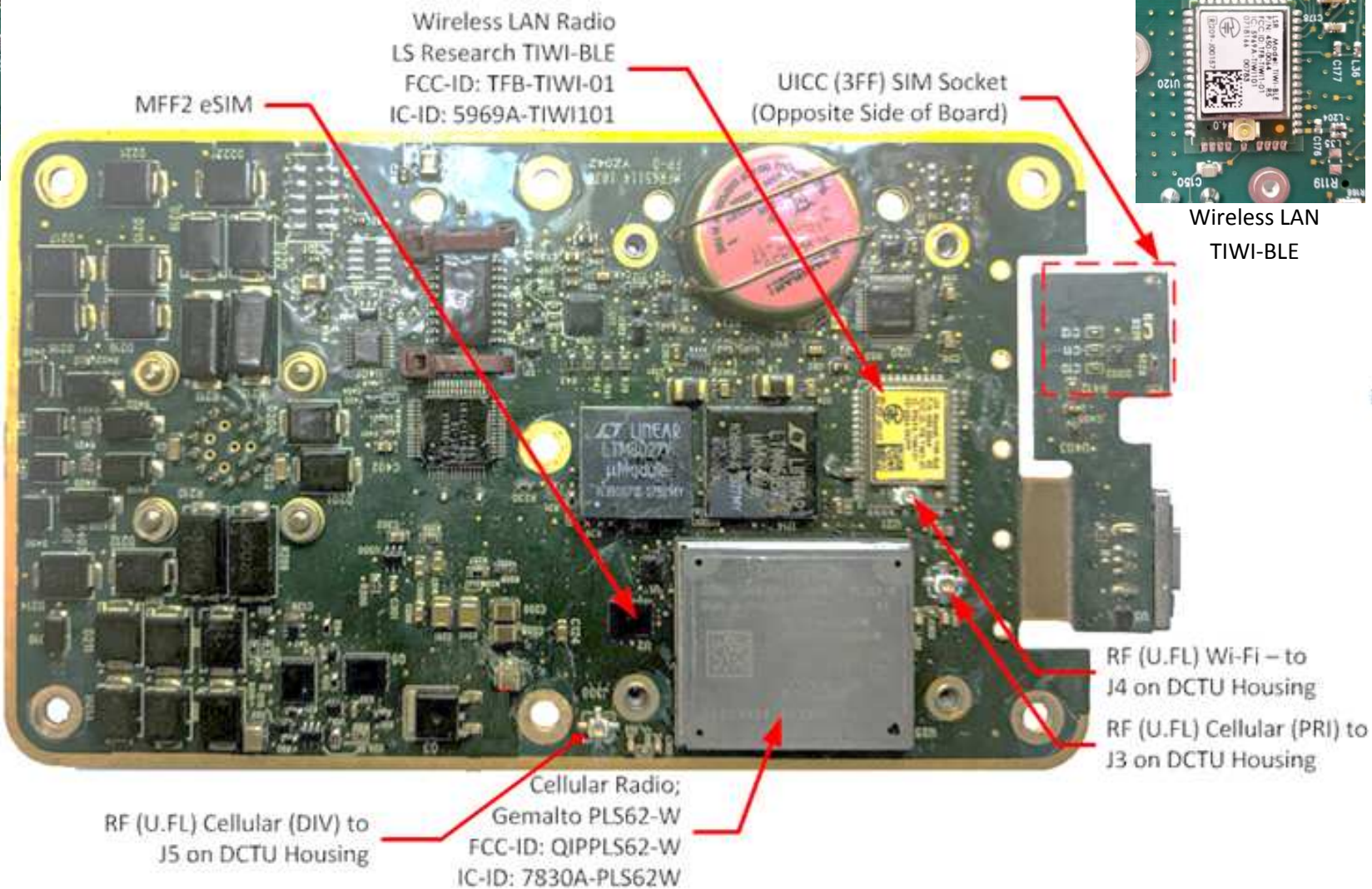


### Figure 3 - MFAST-A-010-2 / DCTU Internal Photos

## DCTU Circuit Board (Bottom View): P/N: MFAST-A-013-2, Schematic P/N MFAST-S-015-2



Cellular Module  
Gemalto PLS62-W



Wireless LAN  
TIWI-BLE