

SETTING UP YOUR BLUETOOTH® SMART SCALE USING BLUETOOTH® 4.0 TECHNOLOGY

The BLUETOOTH® SMART SCALE can estimate daily calorie estimates, BMI and weight difference compared to goal weight and real weight, and then it transmits your results to an app on a mobile device using Bluetooth® 4.0 technology. You can use your BLUETOOTH® SMART SCALE with or without Bluetooth® 4.0 transmitting data. Below are the directions for setting up the scale using Bluetooth® 4.0.

BLUETOOTH® SMART SCALE REQUIREMENTS

The Bluetooth® Smart Scale is designed to be used with the following mobile devices:

- **iOS**
iPhone, iPad and iPod Touch, iPod mini
– using IOS 12.0 and newer
- **Android**
5.0 (API 21) and newer
- **Compatible with devices running Bluetooth® 4.0 technology and above**

Download the free WeighSync app from the Apple store (for IOS devices) or Google play (for Android devices).

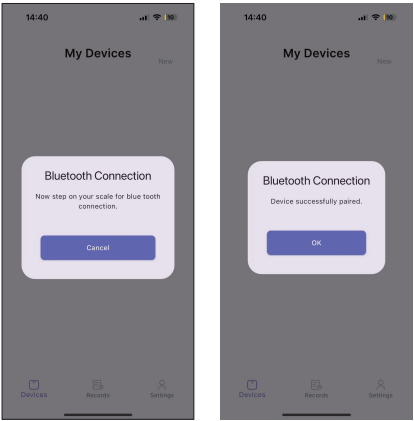
To add new user profile:

1. Your BLUETOOTH® SMART SCALE will scan the mobile device automatically, please make sure the Bluetooth® setting is “ON” and your device is within 3-30 ft. of the scale.
2. Edit the user profile to set up your personal data, including activity levels and goal weight.
3. Proceed to the next step to store your user profile.
4. If you would like to change personal data, including activity levels and goal weight, simply edit the user profile again.
5. Step directly on on to the platform to turn the scale on. Your real weight will appear on the scale,estimate daily calorie estimates, BMI and weight difference compared to goal weight will appear on the app.



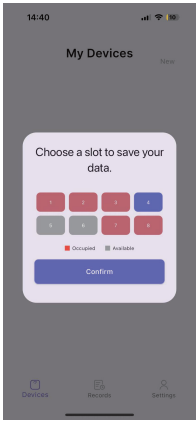
Scan the QR code to download APP

6. To pair your device, make sure your phone Bluetooth® is on and the scale is light up and Bluetooth® light is blinking on the scale. If the scale is not connecting, click on cancel and try again. if the scale continue to not connect for 3 tries,please contact technical support.

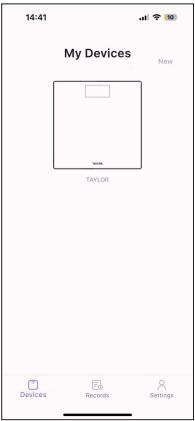


7. After successfully paired a scale, you would have to choose a memory location to store your data on the scale to use it offline when app is not open.

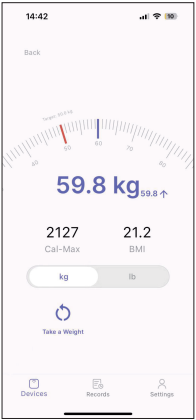
Up to 50 sets of data can be store on the scale before the oldest data is recycled.



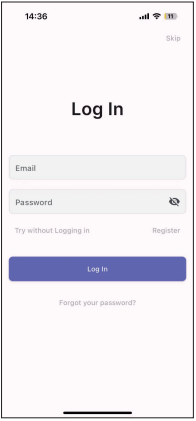
8. Press on the scale icon to begin weigh or press and hold the icon to delete the scale.



9. After a successful measurement
The app will calculate your BMI as well as Cal-Max if you enter the necessary personal data. Press take a Weight to weigh again.



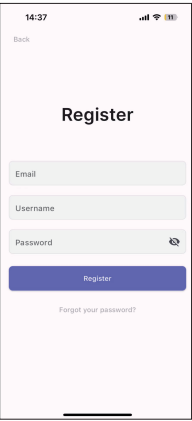
1. Press Skip/ Try without Logging in to use the app Offline(this will limit the app from uploading data to cloud).



Login with an existing account or Register an new Account.

Click on Forget your password to retrieve you account information.

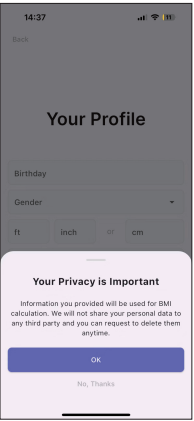
2. Input your email address to use it as your login credential.



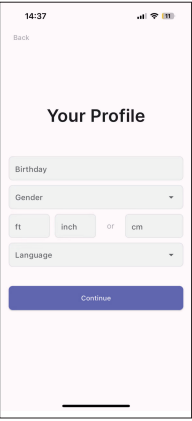
Username is your Alias.

Input password of your choice.

3. You must agree to privacy policy to use this app.



4. Enter your personal profile here.
 - Birthday
 - Gender
 - Height
 - Select Language (English, Spanish, French)



5. This is your device page, you can add and remove your scales here. To add a new scale, click on the "New" on the top right corner. To remove a scale, press and hold the scale icon and press "X".



10. This shows your weight record as well as BMI record, you can track your history from here.

- Daily — Shows the average weight for each day in a week.
- Weekly — Shows the average weight for each week in a month.
- Monthly — Shows the average weight for each month in a year.
- Detail information for each measurement is showing below the graph as a list.
- Press < or > to change the date range view.
- Press Today will send you back to current date.



11.
 - My Profile — Change your personal profile as well as your password and account verification.
 - Sync Data — toggle on and off to enable data upload and download function (only available for registered and verified account).
 - FAQ — Frequently asked questions.
 - Reset Usage Tutorial — View the user tutorial again.
 - Feedback — To send feedback and question to technical support.
 - Privacy — View the privacy Policy and User Agreement.
 - Sign Out — to sign out of current account.

