

## System Check\_H5250

**DUT: Dipole 5GHzV2;Type:D5GHzV2; SN:1169**

Communication System: CW; Frequency: 5250 MHz;Duty Cycle: 1:1

Medium: H5G Medium parameters used:  $f = 5250$  MHz;  $\sigma = 4.748$  S/m;  $\epsilon_r = 36.88$ ;  $\rho = 1000$  kg/m<sup>3</sup>

Ambient Temperature : 22.3 °C; Liquid Temperature : 22.1 °C

DASY5 Configuration:

- Probe: EX3DV4 - SN3970; ConvF(5.85, 5.85, 5.85); Calibrated: 2022/4/18;
- Sensor-Surface: 2mm (Mechanical Surface Detection)
- Electronics: DAE4 Sn1418; Calibrated: 2022/3/24
- Phantom: ELI v5.0; Type: QDOVA002AA; Serial: TP:1231
- Measurement SW: DASY52, Version 52.8 (7); SEMCAD X Version 14.6.10 (7164)

**Pin=100mW/Area Scan (7x9x1):** Interpolated grid: dx=10.00 mm, dy=10.00 mm

Maximum value of SAR (interpolated) = 22.2 W/kg

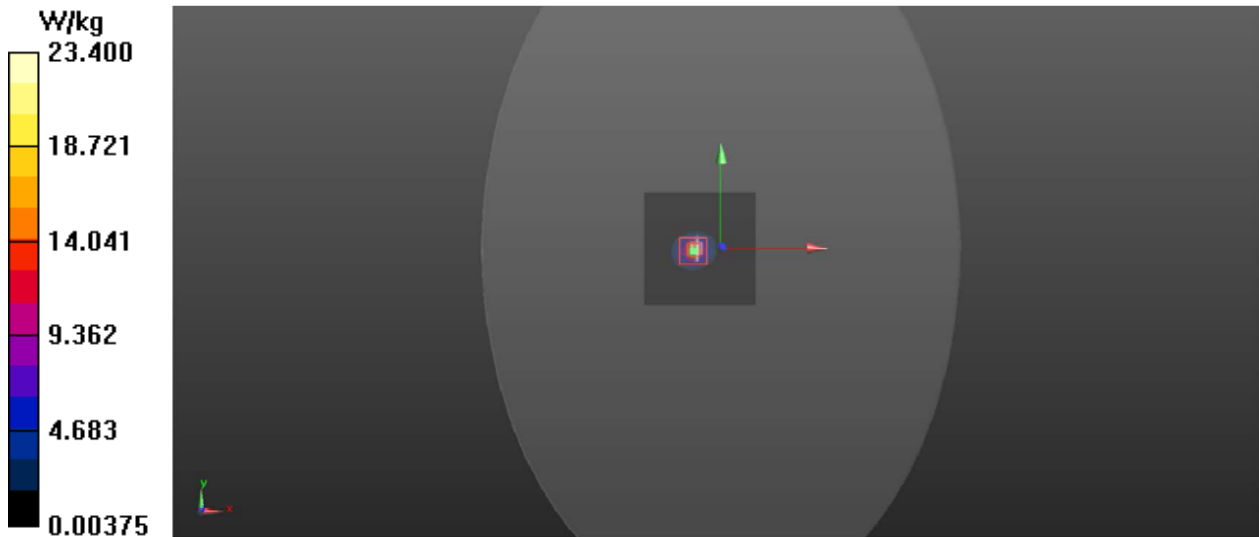
**Pin=100mW/Zoom Scan (8x8x13)/Cube 0:** Measurement grid: dx=4mm, dy=4mm, dz=2mm

Reference Value = 57.229 V/m; Power Drift = 0.15 dB

Peak SAR (extrapolated) = 37.6 W/kg

**SAR(1 g) = 7.60 W/kg; SAR(10 g) = 2.12 W/kg**

Maximum value of SAR (measured) = 23.4 W/kg



## System Check\_H5750

**DUT: Dipole 5GHzV2;Type:D5GHzV2; SN:1169**

Communication System: CW; Frequency: 5750 MHz;Duty Cycle: 1:1

Medium: H5G Medium parameters used:  $f = 5750$  MHz;  $\sigma = 5.415$  S/m;  $\epsilon_r = 35.658$ ;  $\rho = 1000$  kg/m<sup>3</sup>

Ambient Temperature : 21.0 °C; Liquid Temperature : 20.8 °C

DASY5 Configuration:

- Probe: EX3DV4 - SN3970; ConvF(5.2, 5.2, 5.2); Calibrated: 2022/4/18;
- Sensor-Surface: 2mm (Mechanical Surface Detection)
- Electronics: DAE4 Sn1418; Calibrated: 2022/3/24
- Phantom: ELI v5.0; Type: QDOVA002AA; Serial: TP:1231
- Measurement SW: DASY52, Version 52.8 (7); SEMCAD X Version 14.6.10 (7164)

**Pin=100mW/Area Scan (7x9x1):** Interpolated grid: dx=10.00 mm, dy=10.00 mm

Maximum value of SAR (interpolated) = 20.6 W/kg

**Pin=100mW/Zoom Scan (8x8x13)/Cube 0:** Measurement grid: dx=4mm, dy=4mm, dz=2mm

Reference Value = 50.784 V/m; Power Drift = 0.05 dB

Peak SAR (extrapolated) = 35.0 W/kg

**SAR(1 g) = 7.50 W/kg; SAR(10 g) = 2.14 W/kg**

Maximum value of SAR (measured) = 21.5 W/kg

