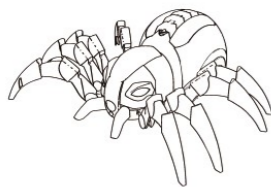


DEERC

PRODUCT MANUAL

V1.1



usa@deerc.com [USA] +1(855) 777-8866
 eu@deerc.com [EU]
 jp@deerc.com [JP]

www.deerc.com

< PREFACE >

To make your experience with control this product as easy and convenient as possible, please read the instructions provided before using the product. Enjoy and have fun with the product while keeping the manual for future maintenance and reference.

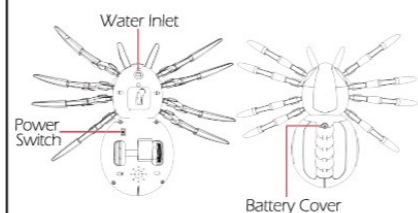
- In order to protect the legitimate rights and interests of users, please be sure to carefully read the contents of this manual before using this product.
- When using this product, please be sure to strictly observe and perform the requirements which include but not limited to the instructions and safety guidelines. For any personal injury, accident, property loss, legal dispute, or any other adverse event causing a conflict of interest resulting from the use of the product or any irresistible factors that are in violation of the safety instructions, the user shall bear the related responsibilities and losses. DEERC will not take any responsibility.
- Once you start using the product, you are deemed to have read, understood, recommended, and accepted all terms and contents of the instructions (including disclaimers, safety instructions, warning instructions, etc.) included with this product.
- In case you are having challenges on any aspect of the product, like operation or maintenance, please contact your local sales agent or contact customer support at DEERC.

1

< PACKAGE CONTENTS >

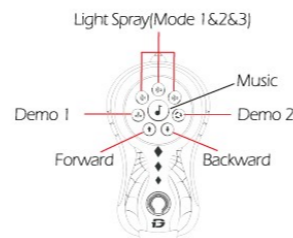
Product Body	Remote Control	Dropper
Screwdriver	Product Manual	

< PRODUCT DETAILS >



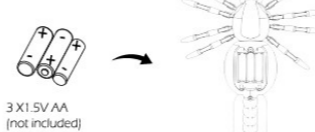
2

< REMOTE CONTROL FUNCTIONS >



< BATTERY INSTALLATION >

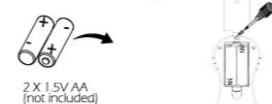
1. Product Battery



- Unscrew and open the battery cover.
 - Insert 3 AA batteries in the correct direction.
 - Close the battery cap and lock it.
- If the product will not be used for a long time, make sure to turn it off and remove the battery.**

3

2. Remote Control Battery



- Unscrew and open the battery cover.
 - Insert 2 AA batteries in the correct direction.
 - Close the battery cap and lock it.
- If the remote will not be used for a long time, make sure to remove the batteries.**

< SPECIFICATIONS >

Dimensions: 11.42 × 9.45 × 4.33 inches
 Battery Type For Product: 1.5V AA battery
 Max Control Distance: < 13 m
 Battery Type For Remote Control: 1.5V AA battery
 Operating Temperature Range: 32° to 104°F (0° to 40°C)

< OPERATION >

1. Pairing

After the product and the remote control battery are installed, the switch at the bottom of the product can be paired successfully.

4

2. Forward, Backward

Press the up arrow button on the remote control to move the product forward, and click the down button on the remote control to move the product backward.



3. Spray Function

- Please make sure there is water inside the water tank before using the spray function.
- Open the plug, fill in the water tank with the dropper came with the package, then close the plug once you have done it.
- Press these 3 spray buttons once to light spray, divided into 3 spray modes.



4. Music

Press the sound button once to sound music.



5. Demo

Press these 2 demo keys once to perform automatic demo, divided into 2 demo modes.



5

< WARNINGS >

- According to the instructions provided in the manual. Some the part needs to be assembled and adjusted by adults.
- Please use it under the guidance of an adult.
- Please promptly put away the packing materials so as not to cause harm to children.
- Do not operate on a location where water is trapped or under the rain. Parts of the product may malfunction if exposed to water.
- Do not touch the rotating wheel to avoid injury.
- The product contains small parts that may pose a risk of ingestion or suffocation.
- To remotely control the product on the road or in a crowd to avoid accidents.
- Disconnect the rechargeable USB cable before cleaning the toy.
- If you observe electrical charges during product usage, turn off the device immediately.
- When installing or replacing the battery, pay attention to the correct polarity of the battery.
- The product uses a 1.5V aa battery.
- It is strictly prohibited to do the following actions such as but not limited to disassemble, modify, crash, puncture, drop, throw in a fire or any other means of causing damage to the product to avoid harm to the user and other participants.
- Do not expose the battery to prolonged exposure to sunlight to prevent danger.
- It is advisable to store the battery at a temperature below 30°C. Do not store it in a place with heat, high temperature, or humidity to avoid danger.
- Non-rechargeable batteries cannot be charged.
- Do not mix old and new or different types of batteries.

6

< GENERAL INFORMATION >

FCC Notice:
 This device complies with Part 15 of the FCC Rules. Operation is subject to the following two conditions:
 (1) This device may not cause harmful interference, and
 (2) This device must accept any interference received, including interference that may cause undesired operation.

NOTE: This equipment has been tested and found to comply with the limits for a Class B digital device, according to Part 15 of the FCC Rules. These limits are designed to provide reasonable protection against harmful interference in a residential installation. This equipment generates uses and can radiate radio frequency energy and, if not installed and used in accordance with the instructions, may cause harmful interference to radio communications. However, there is no guarantee that interference will not occur in a particular installation. If this equipment does cause harmful interference to radio or television reception, which can be determined by turning the equipment off and on, the user is encouraged to try to correct the interference by one or more of the following measures:
 —Reorient or relocate the receiving antenna.
 —Increase the distance between the equipment and receiver.
 —Connect the equipment into an outlet on a circuit different from that to which the receiver is connected.
 —Consult the dealer or an experienced radio/TV technician for help.

WARNING: Changes or modifications not expressly approved by the party responsible for compliance could void the user's authority to operate the equipment.

8

- Do not disassemble the battery or modify the battery to avoid the risk of fire or explosion.
- After the battery is used, it should be taken out of the product.
- Stop using the battery as soon as it gives a foul smells or suddenly becomes hot, deformed, discolored, or otherwise abnormal during use or charging.
- Drained batteries should be removed immediately.
- Do not cause the electrical supply of the wiring port to short circuit.
- If you do not use the product for a long time, remove the batteries of the remote control car and remote control.
- Instructions contains important product information, please give time to read for a better product experience.

7