

DECLARATION

FEDERAL COMMUNICATIONS COMMISSIONS

Authorization and Evaluation Division

7435 Oakland Mills Road

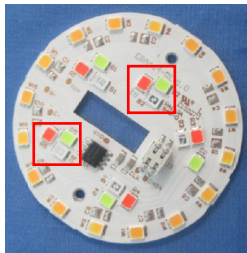
Columbia, MD 21046

Dear Sir or Madam:

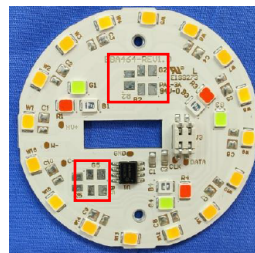
We, ZHEJIANG EBOY TECHNOLOGY CO., LTD. hereby declare that product name: LED LAMP (model name: EBE-BBW402, EBE-BBW403, EBE-BBW403-A, BW906, BW406, BW306, BW206, C-BW906, C-BW406, C-BW306, C-BW206. FCC ID: 2AJ3WEBEBBW402). EBE-BBW402 and EBE-BBW403 have been tested by BAEL.

The differences of them are as follows:

1. The difference between EBE-BBW402 and BW906, BW406, BW306, BW206 is only model name.
2. The difference between EBE-BBW403 and EBE-BBW403-A is the number of lamp beads and model name.

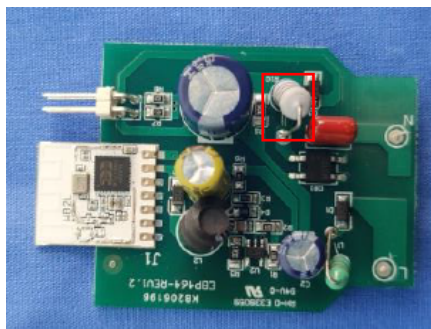


model: EBE-BBW403

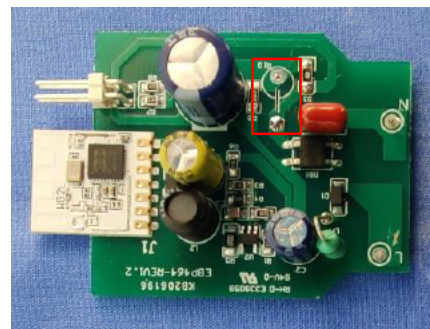


model: EBE-BBW403-A

3. The difference between EBE-BBW403 and C-BW906, C-BW406, C-BW306, C-BW206 is only model name.
4. The differences between GDG/DDY 624 and GDG/DDY 625 are model name and PCB board. GDG/DDY 624 has resistance, GDG/DDY 625 doesn't have resistance.



{ odel: EBE-BBW402




{ odel: EBE-BBW403

5. All these models have same RF module ,so the radio parameters of them are same.

Please contact me if there is need for any additional clarification or information.

Best Regards,

Signature: 

Printed Name: Yang Xiao Fen

Title: R&D MANAGER