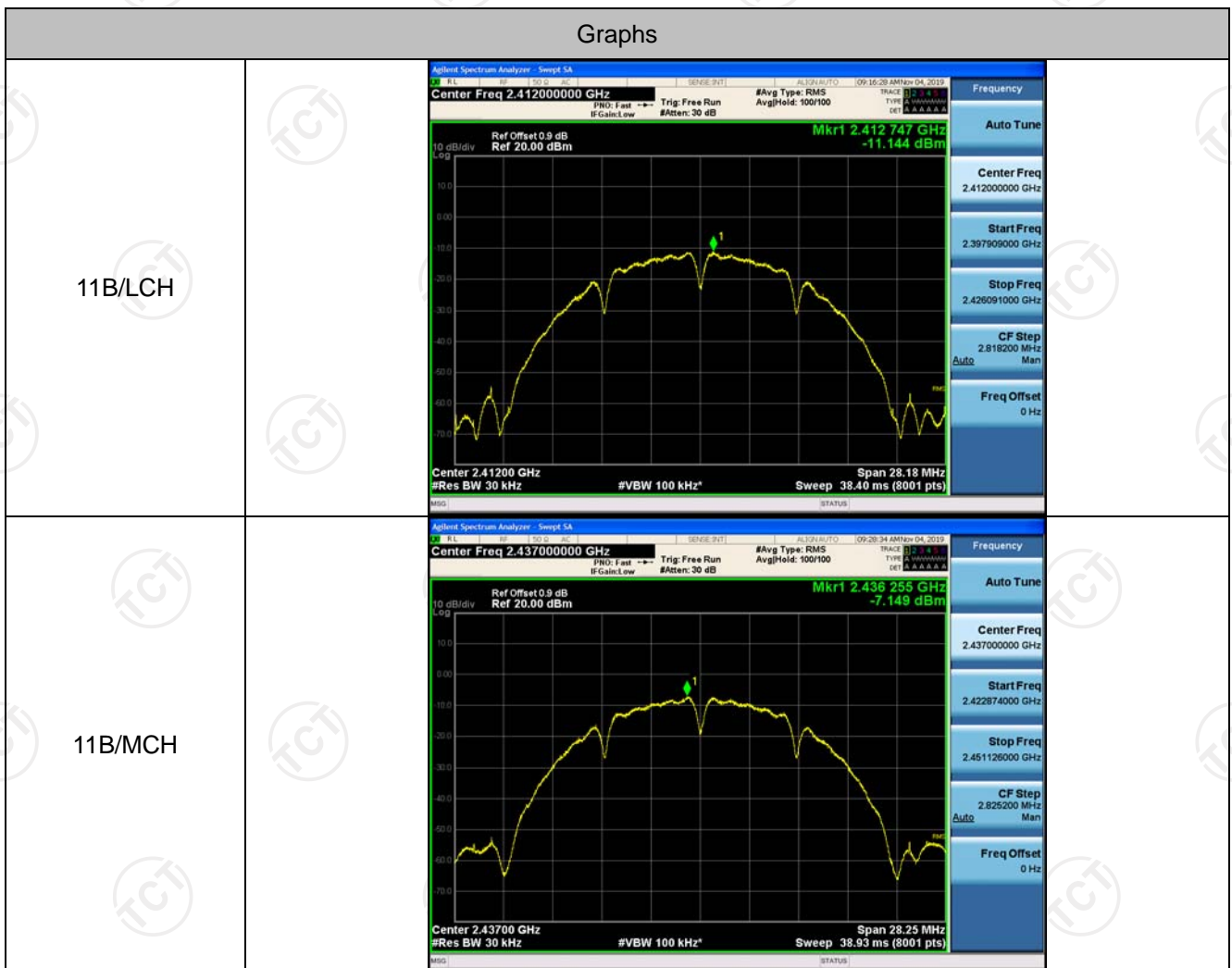


## Power Spectral Density

### Result Table

Mode	Channel	Meas.Level [dBm]	Av.PSD [dBm]	Verdict
11B	LCH	-11.144	-11.144	PASS
11B	MCH	-7.149	-7.149	PASS
11B	HCH	-7.098	-7.098	PASS
11G	LCH	-11.933	-11.933	PASS
11G	MCH	-9.504	-9.504	PASS
11G	HCH	-9.662	-9.662	PASS
11N20SISO	LCH	-12.243	-12.243	PASS
11N20SISO	MCH	-10.726	-10.726	PASS
11N20SISO	HCH	-9.980	-9.980	PASS
11N40SISO	LCH	-13.674	-13.674	PASS
11N40SISO	MCH	-11.421	-11.421	PASS
11N40SISO	HCH	-11.694	-11.694	PASS

### Test Graph



11B/HCH



11G/LCH



11G/MCH



11G/HCH




11N20SISO/LCH



11N20SISO/MCH



<p>11N20SISO/HCH</p>	 <p>Agilent Spectrum Analyzer - Swept SA</p> <p>Center Freq 2.46200000 GHz</p> <p>Ref Offset 0.9 dB Ref 20.00 dBm</p> <p>Mkr1 2.462 649 GHz -9.980 dBm</p> <p>Center 2.46200 GHz #Res BW 30 kHz #VBW 100 kHz* Sweep 48.00 ms (8001 pts)</p> <p>Frequency</p> <p>Auto Tune</p> <p>Center Freq 2.46200000 GHz</p> <p>Start Freq 2.444472000 GHz</p> <p>Stop Freq 2.479628000 GHz</p> <p>CF Step 3.505600 MHz Auto Man</p> <p>Freq Offset 0 Hz</p>
<p>11N40SISO/LCH</p>	 <p>Agilent Spectrum Analyzer - Swept SA</p> <p>Center Freq 2.42200000 GHz</p> <p>Ref Offset 0.9 dB Ref 20.00 dBm</p> <p>Mkr1 2.422 644 GHz -13.674 dBm</p> <p>Center 2.42200 GHz #Res BW 30 kHz #VBW 100 kHz* Sweep 97.60 ms (8001 pts)</p> <p>Frequency</p> <p>Auto Tune</p> <p>Center Freq 2.42200000 GHz</p> <p>Start Freq 2.386238000 GHz</p> <p>Stop Freq 2.457762000 GHz</p> <p>CF Step 7.152400 MHz Auto Man</p> <p>Freq Offset 0 Hz</p>
<p>11N40SISO/MCH</p>	 <p>Agilent Spectrum Analyzer - Swept SA</p> <p>Center Freq 2.43700000 GHz</p> <p>Ref Offset 0.9 dB Ref 20.00 dBm</p> <p>Mkr1 2.435 163 GHz -11.421 dBm</p> <p>Center 2.43700 GHz #Res BW 30 kHz #VBW 100 kHz* Sweep 97.60 ms (8001 pts)</p> <p>Frequency</p> <p>Auto Tune</p> <p>Center Freq 2.43700000 GHz</p> <p>Start Freq 2.401165000 GHz</p> <p>Stop Freq 2.472835000 GHz</p> <p>CF Step 7.167000 MHz Auto Man</p> <p>Freq Offset 0 Hz</p>

11N40SISO/HCH



**Appendix B: Photographs of Test Setup**

Product: Wireless Network Video Recorder

Model: RS-H4504HR-N-W

Radiated Emission



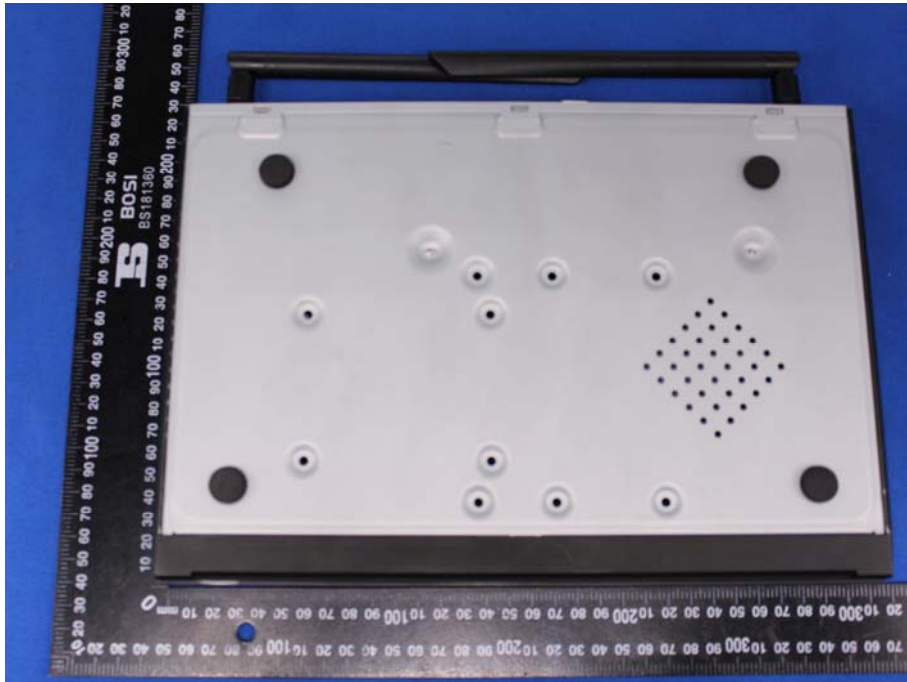
Conducted Emission





**Appendix C: Photographs of EUT**  
**Product: Wireless Network Video Recorder**  
**Model: RS-H4504HR-N-W**  
**External Photos**





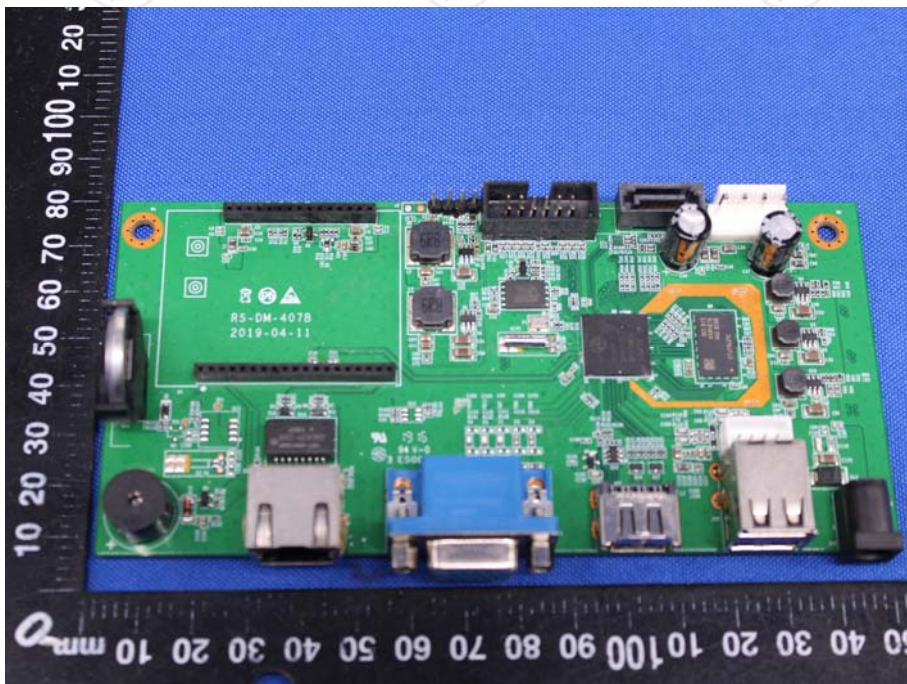
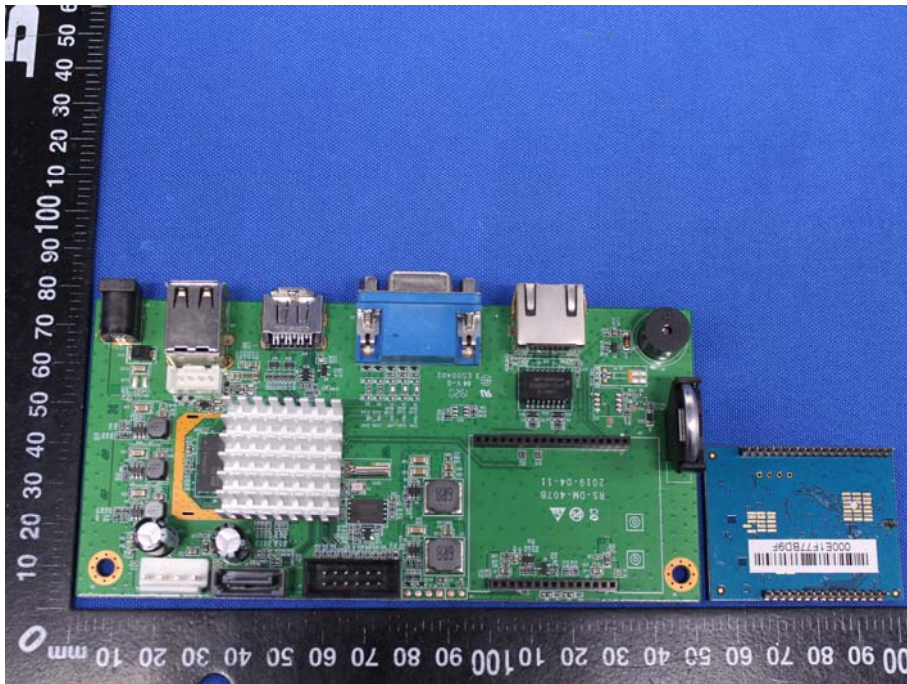


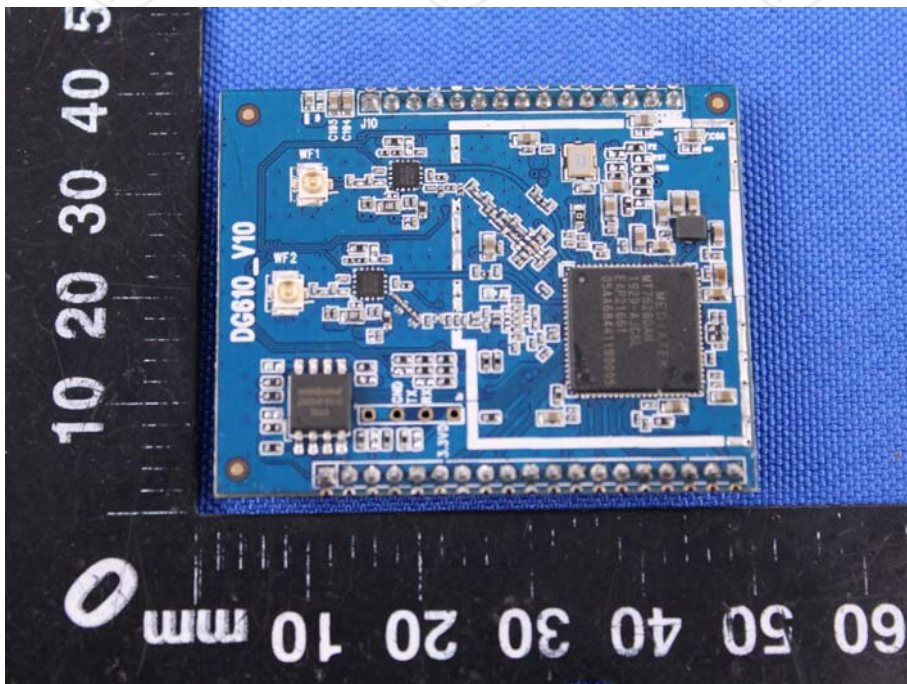
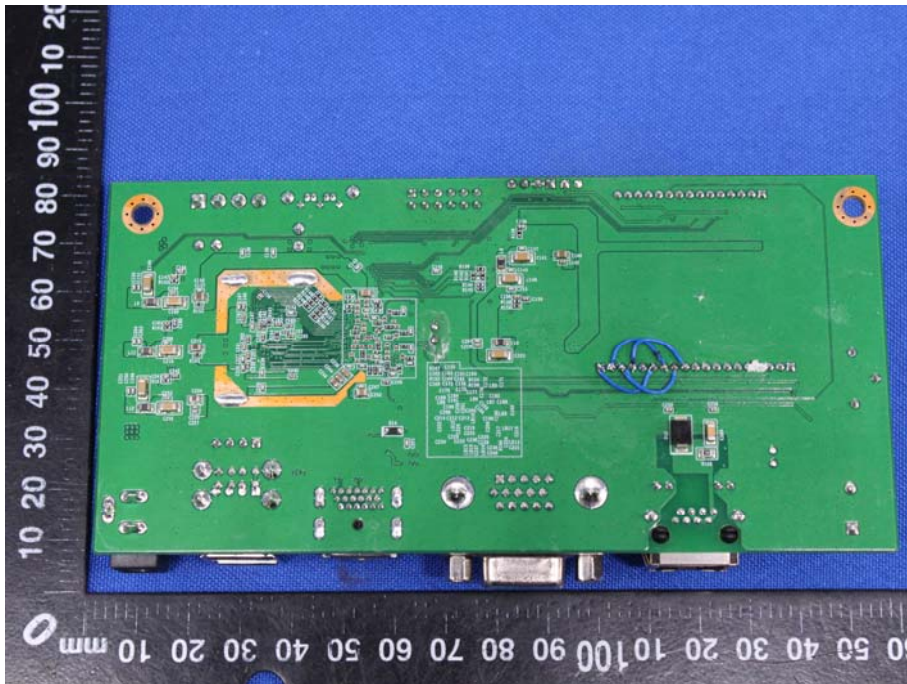




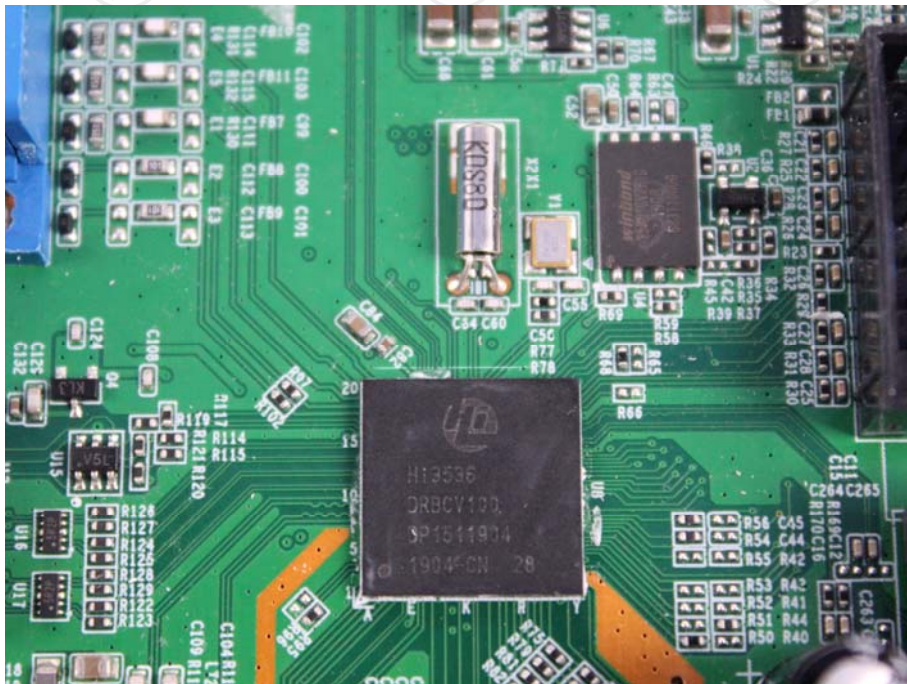
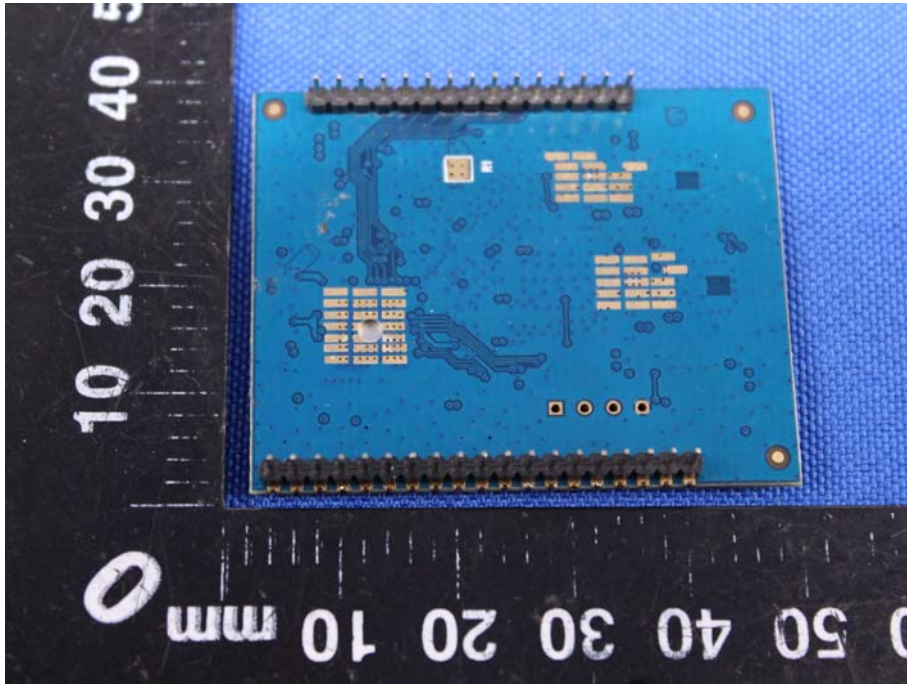
**Product: Wireless Network Video Recorder**  
**Model: RS-H4504HR-N-W**  
**Internal Photos**

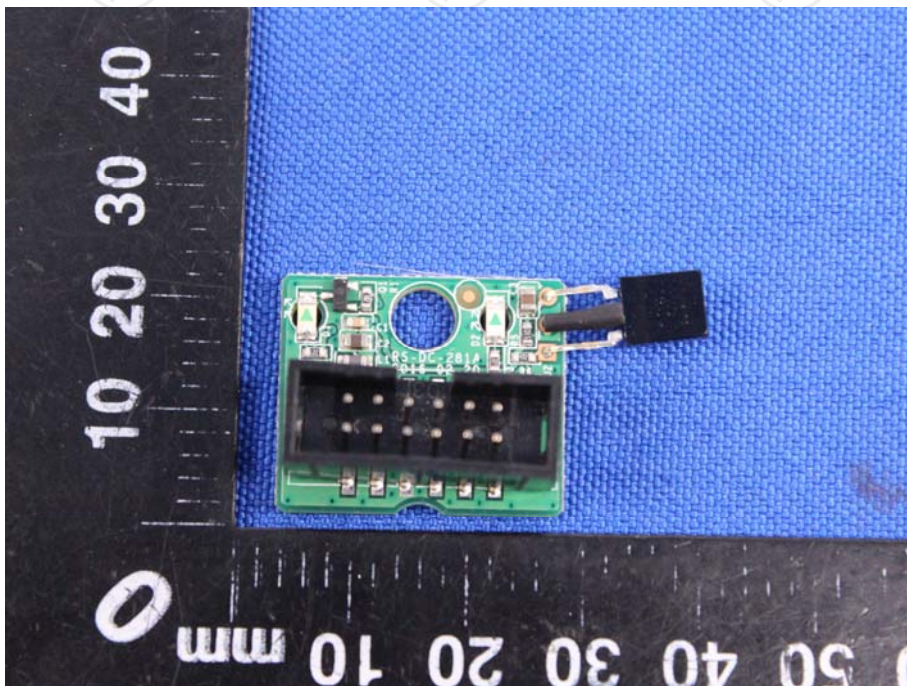
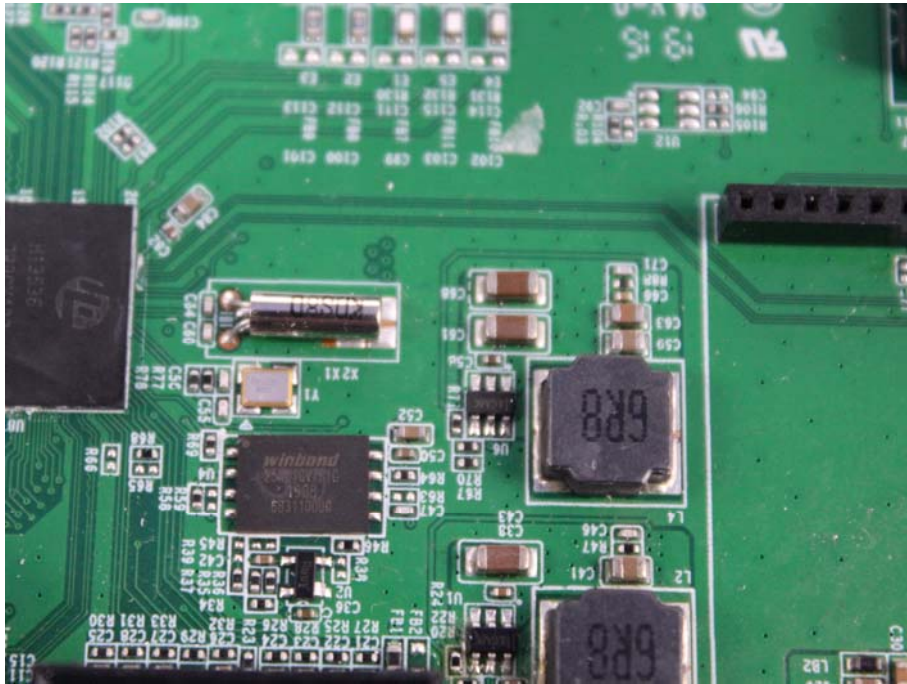


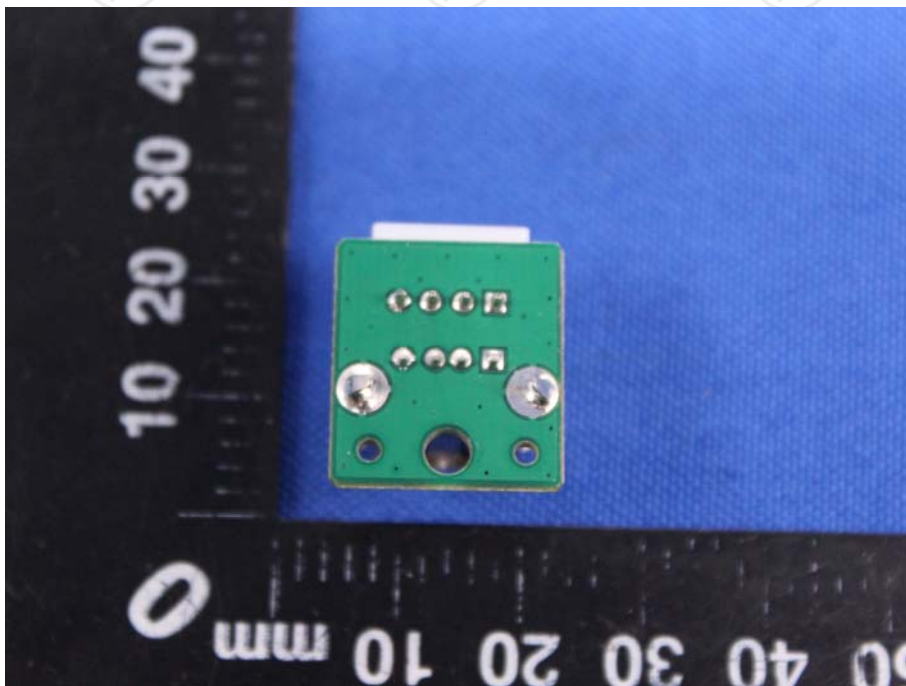
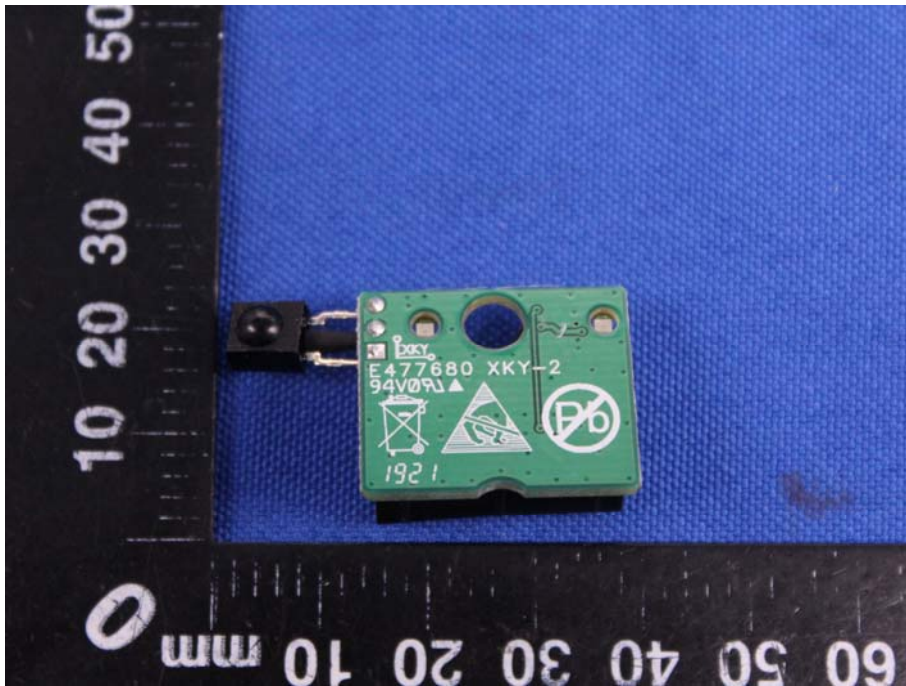


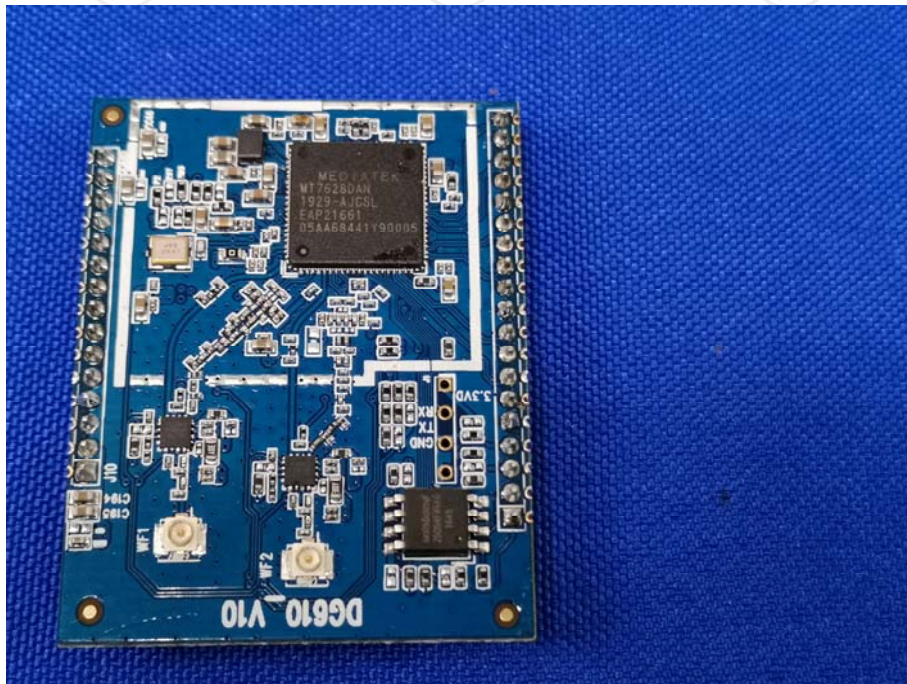
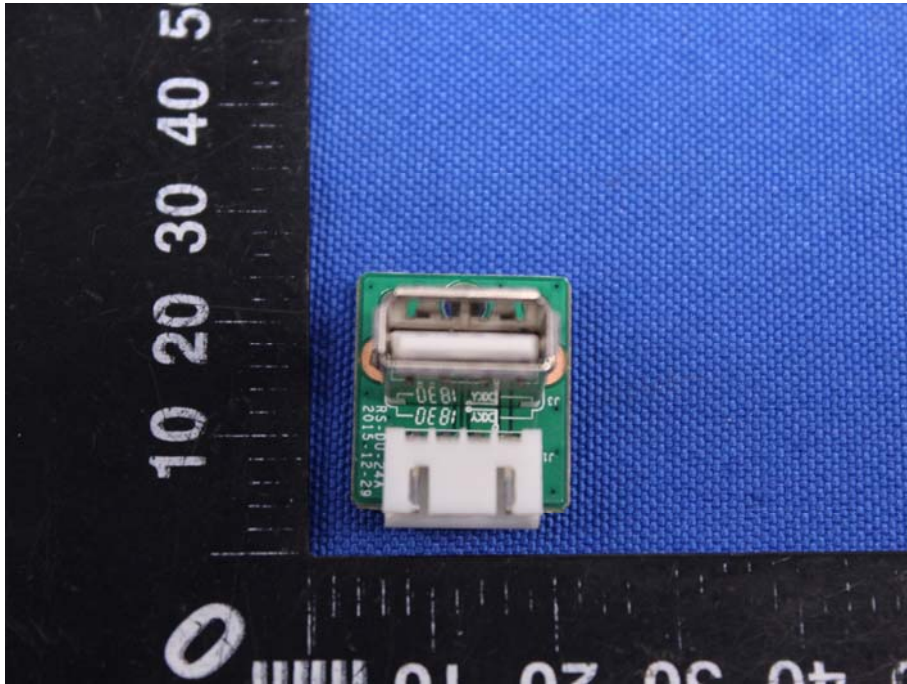


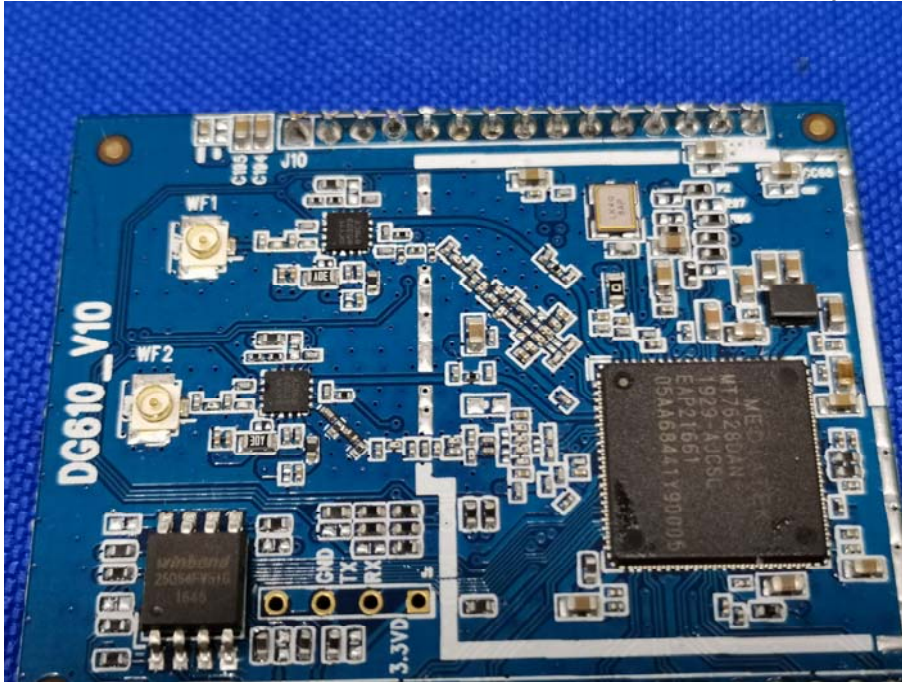












**\*\*\*\*\*END OF REPORT\*\*\*\*\***