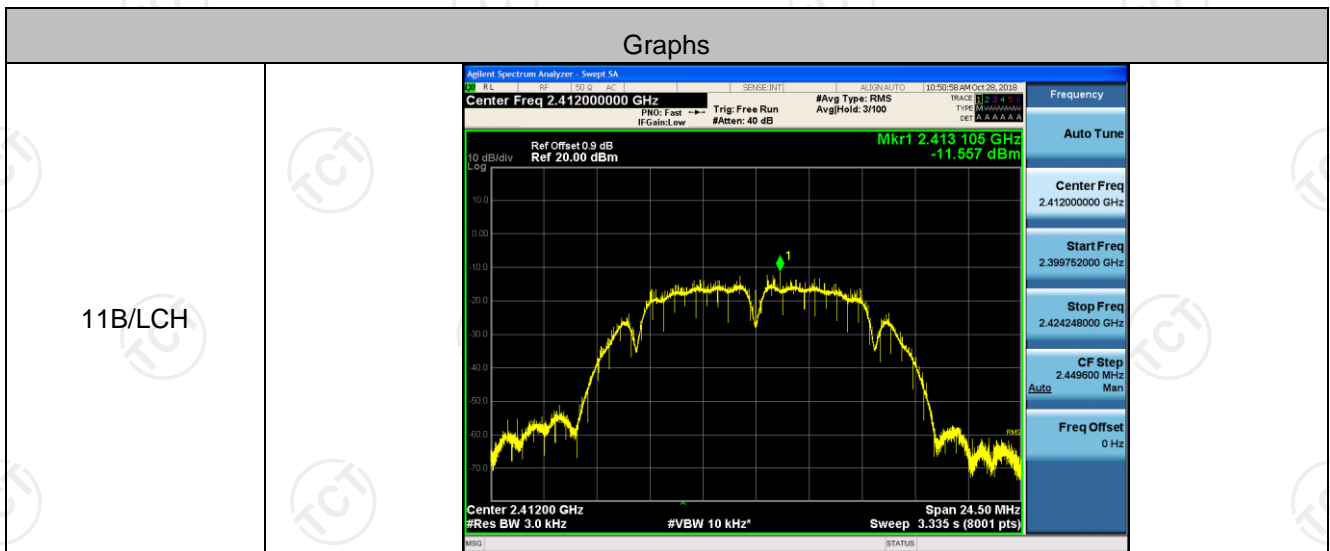


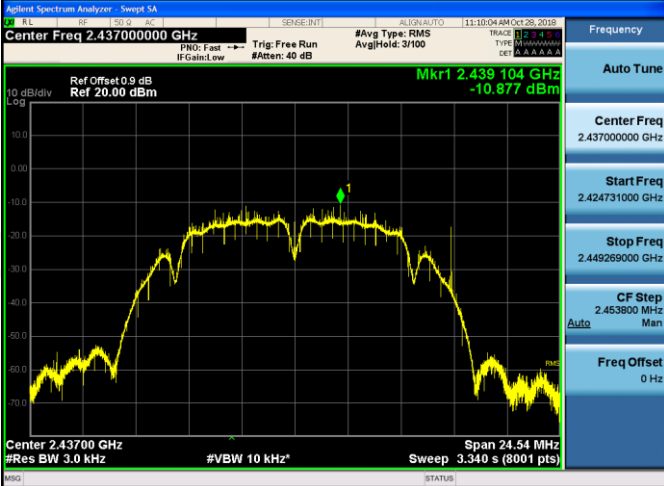

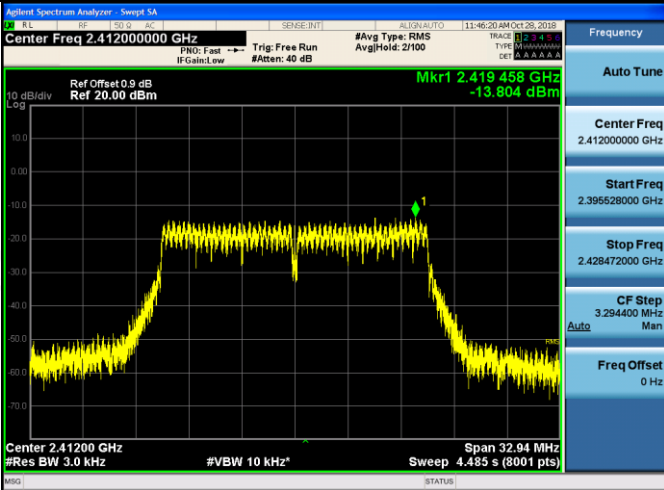
Power Spectral Density

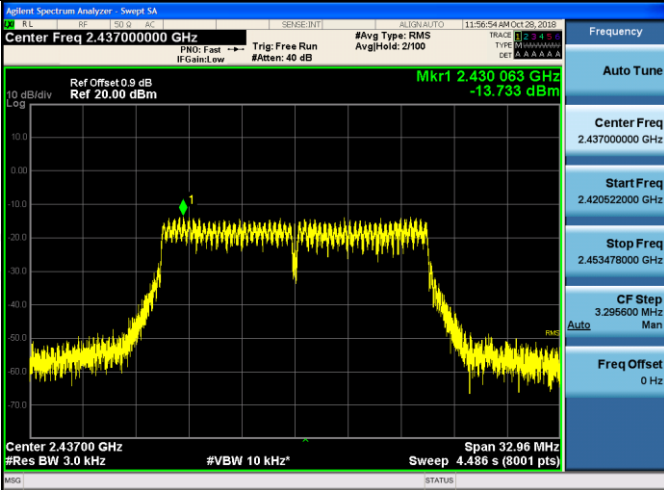
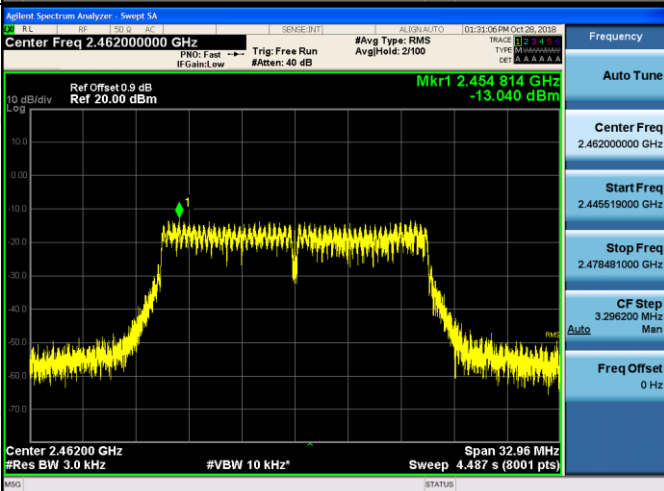
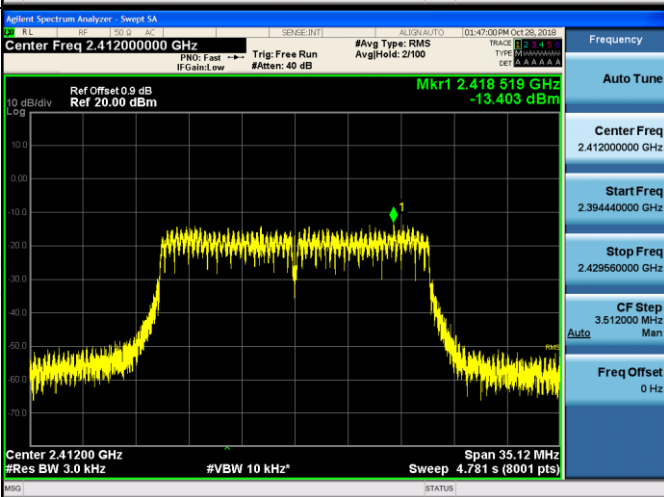
Result Table

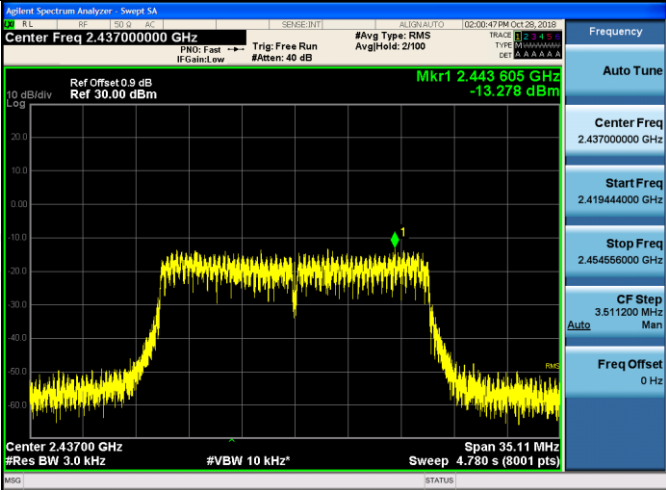
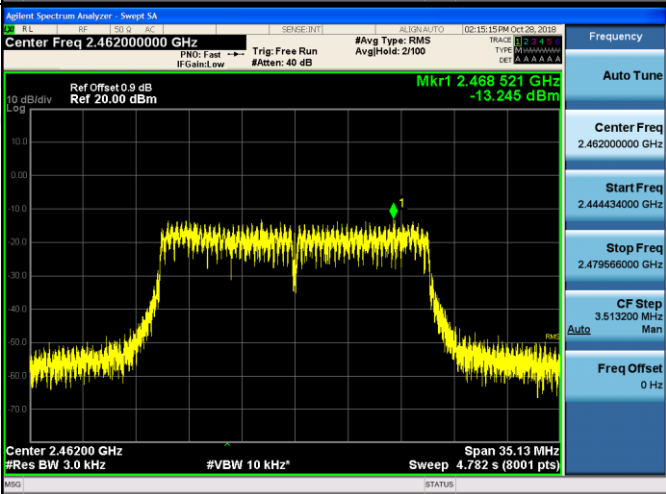
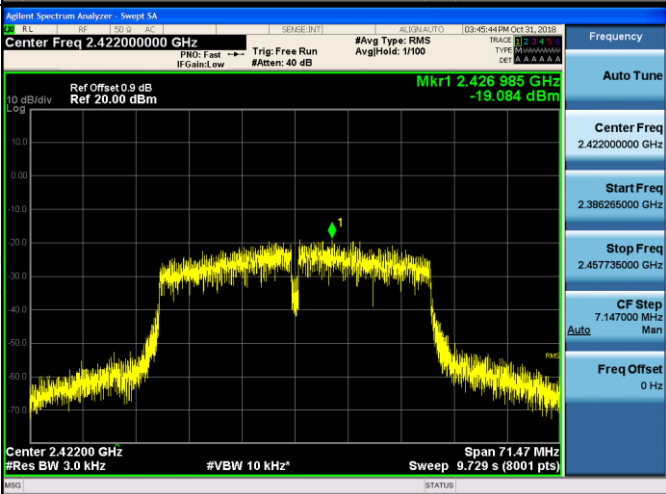
Mode	Channel	Meas.Level [dBm]	Verdict
11B	LCH	-11.557	PASS
11B	MCH	-10.877	PASS
11B	HCH	-6.866	PASS
11G	LCH	-13.804	PASS
11G	MCH	-13.733	PASS
11G	HCH	-13.040	PASS
11N20SISO	LCH	-13.403	PASS
11N20SISO	MCH	-13.278	PASS
11N20SISO	HCH	-13.245	PASS
11N40SISO	LCH	-19.084	PASS
11N40SISO	MCH	-17.728	PASS
11N40SISO	HCH	-18.211	PASS

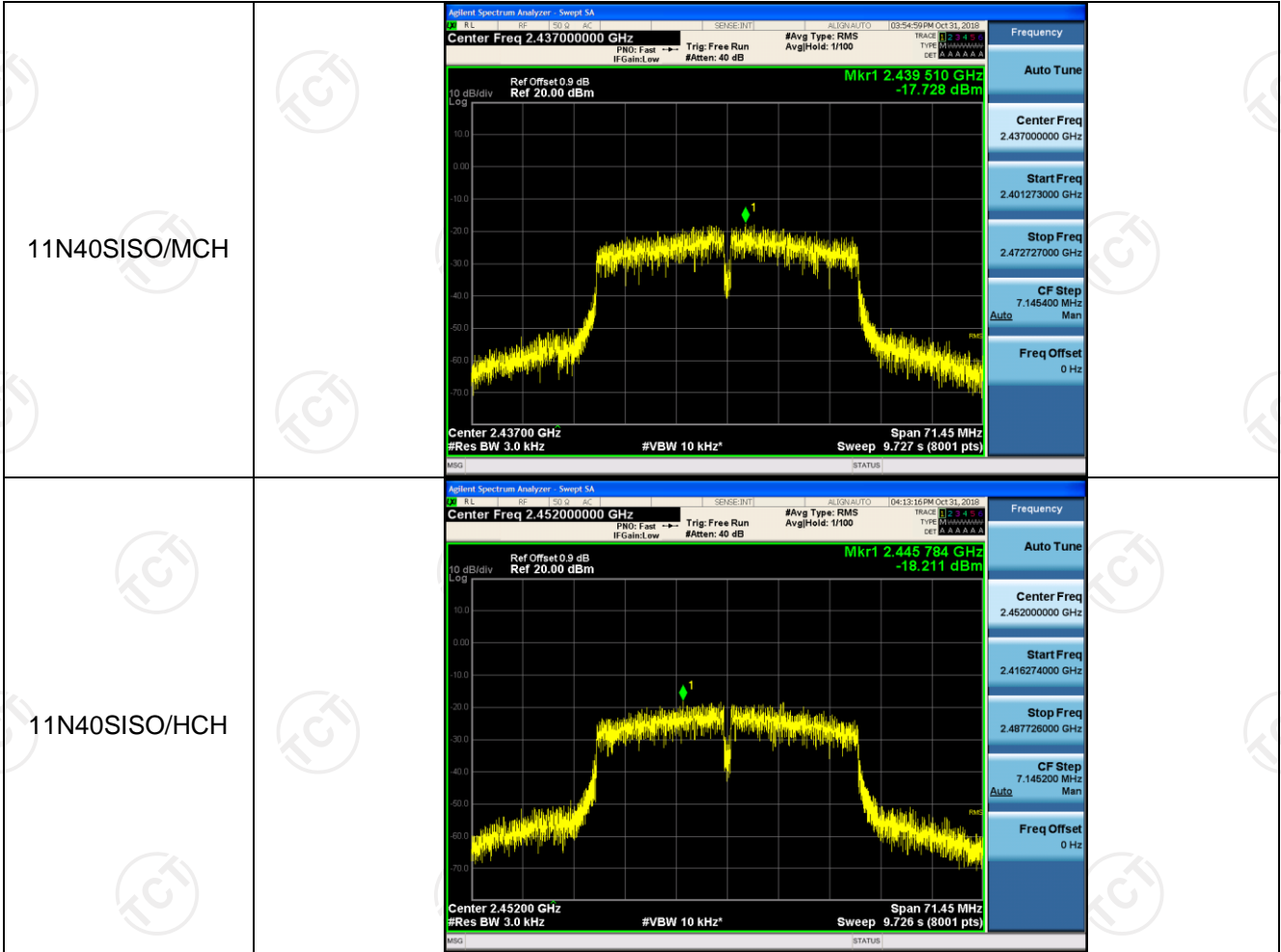
Test Graph



11B/MCH		<p>Frequency</p> <p>Auto Tune</p> <p>Center Freq 2.43700000 GHz</p> <p>Start Freq 2.424731000 GHz</p> <p>Stop Freq 2.449269000 GHz</p> <p>CF Step 2.453800 MHz Auto Man</p> <p>Freq Offset 0 Hz</p>
11B/HCH		<p>Frequency</p> <p>Auto Tune</p> <p>Center Freq 2.46200000 GHz</p> <p>Start Freq 2.449746000 GHz</p> <p>Stop Freq 2.474254000 GHz</p> <p>CF Step 2.450800 MHz Auto Man</p> <p>Freq Offset 0 Hz</p>
11G/LCH		<p>Frequency</p> <p>Auto Tune</p> <p>Center Freq 2.41200000 GHz</p> <p>Start Freq 2.395528000 GHz</p> <p>Stop Freq 2.428472000 GHz</p> <p>CF Step 3.294400 MHz Auto Man</p> <p>Freq Offset 0 Hz</p>

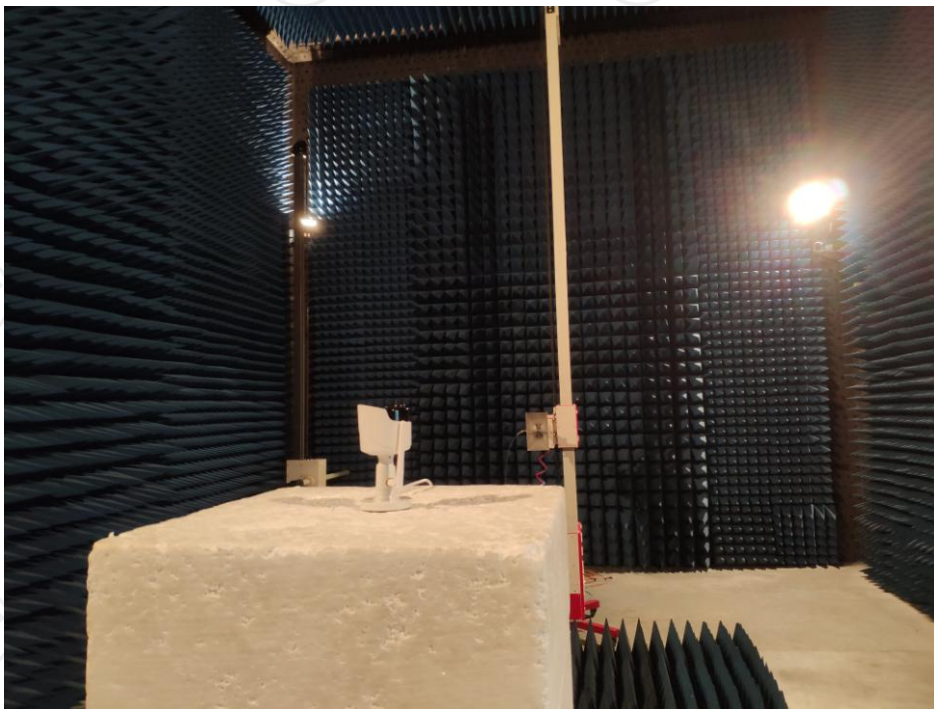
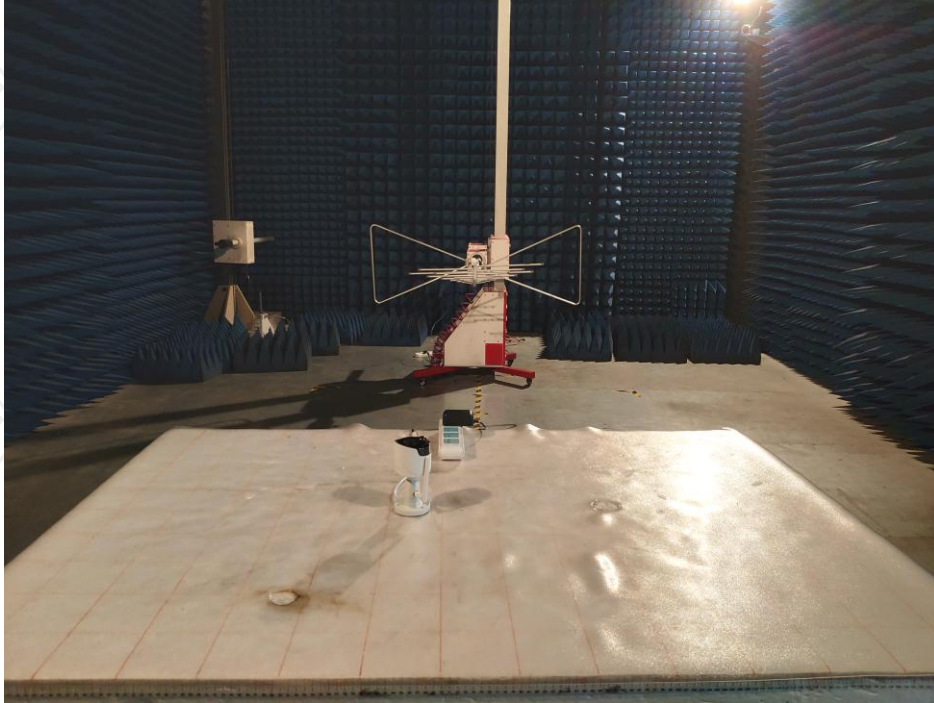
<p>11G/MCH</p>	 <p>Agilent Spectrum Analyzer - Swept SA</p> <p>Center Freq 2.43700000 GHz</p> <p>Mkr1 2.430 063 GHz -13.733 dBm</p> <p>Center 2.43700 GHz Span 32.96 MHz</p> <p>#Res BW 3.0 kHz #VBW 10 kHz Sweep 4.486 s (8001 pts)</p>
<p>11G/HCH</p>	 <p>Agilent Spectrum Analyzer - Swept SA</p> <p>Center Freq 2.46200000 GHz</p> <p>Mkr1 2.454 814 GHz -13.040 dBm</p> <p>Center 2.46200 GHz Span 32.96 MHz</p> <p>#Res BW 3.0 kHz #VBW 10 kHz Sweep 4.487 s (8001 pts)</p>
<p>11N20SISO/LCH</p>	 <p>Agilent Spectrum Analyzer - Swept SA</p> <p>Center Freq 2.41200000 GHz</p> <p>Mkr1 2.418 519 GHz -13.403 dBm</p> <p>Center 2.41200 GHz Span 35.12 MHz</p> <p>#Res BW 3.0 kHz #VBW 10 kHz Sweep 4.781 s (8001 pts)</p>

<p>11N20SISO/MCH</p>	
<p>11N20SISO/HCH</p>	
<p>11N40SISO/LCH</p>	



Appendix B: Photographs of Test Setup

Product: Wireless Camera
Model: RS-CH281SCG-W-36W-PIR
Radiated Emission



Conducted Emission



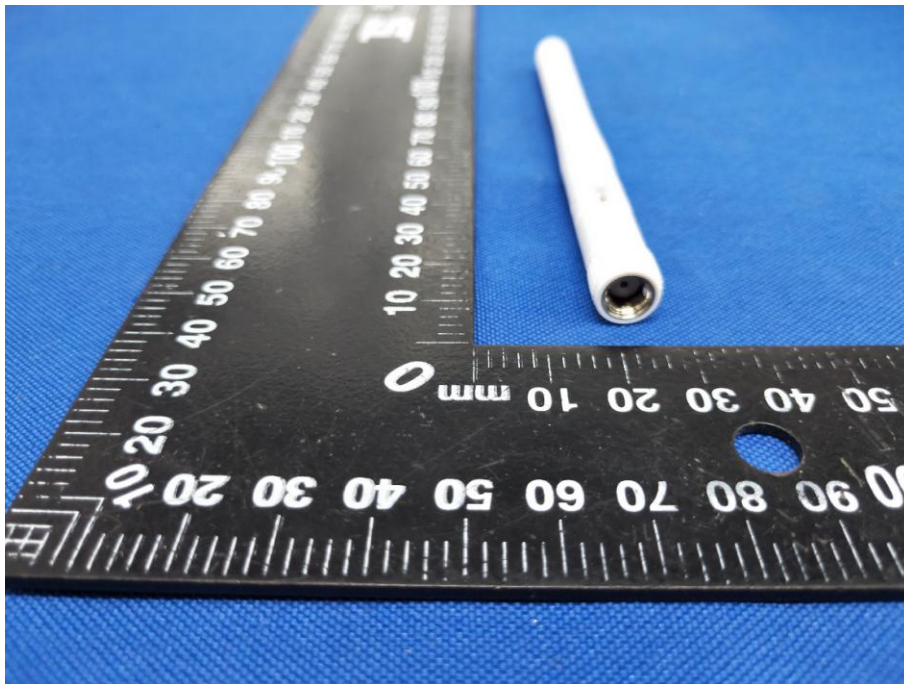
Appendix C: Photographs of EUT
Product: Wireless Camera
Model: RS-CH281SCG-W-36W-PIR
External Photos



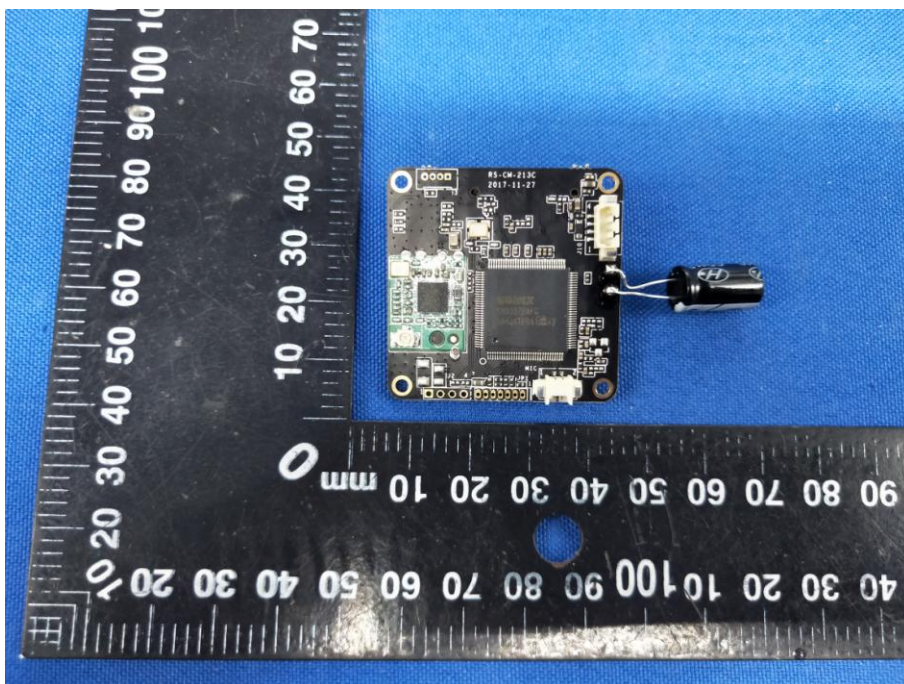
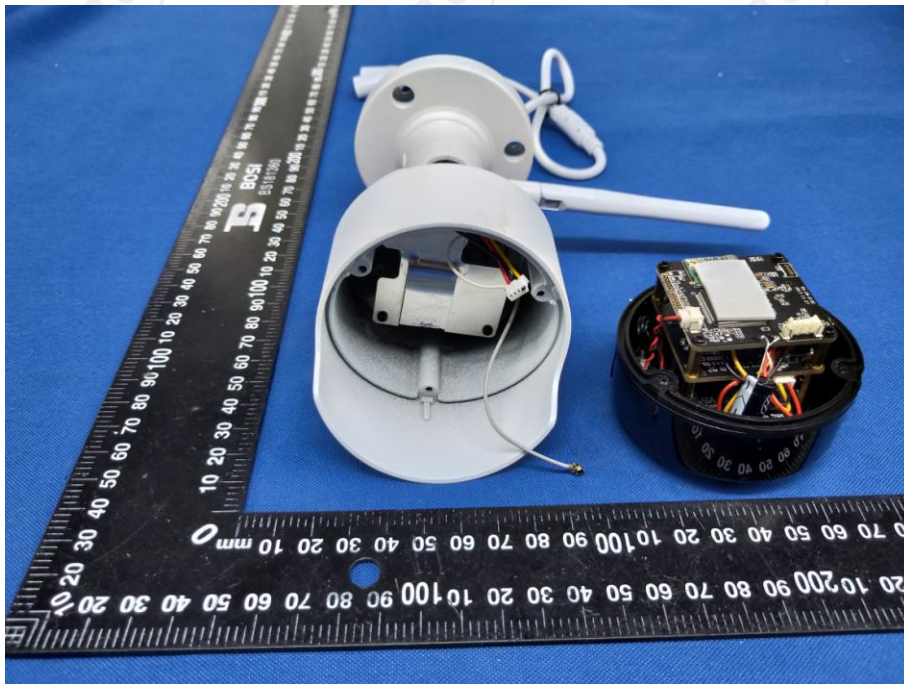


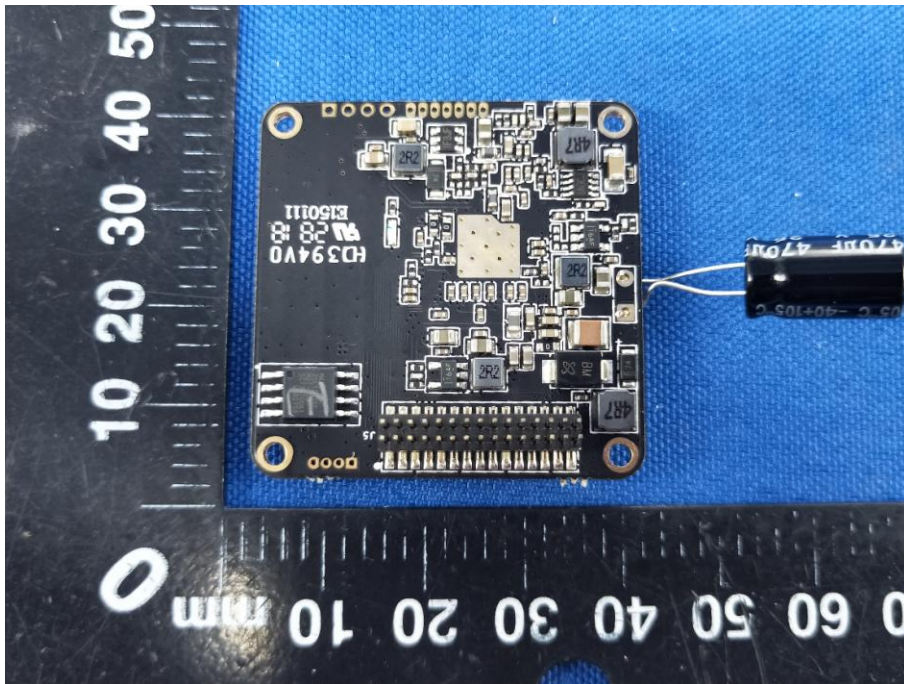
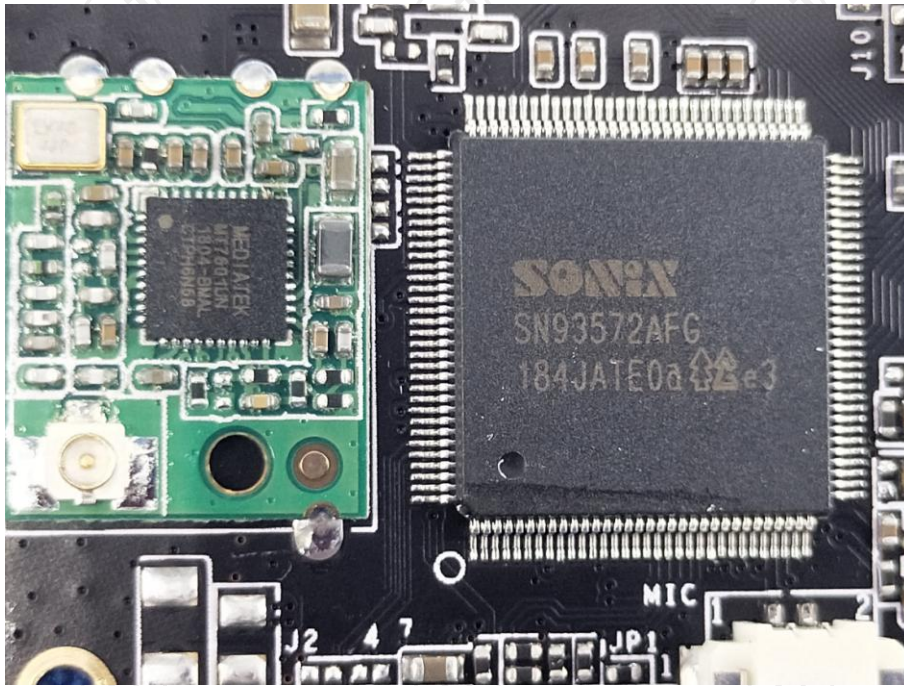


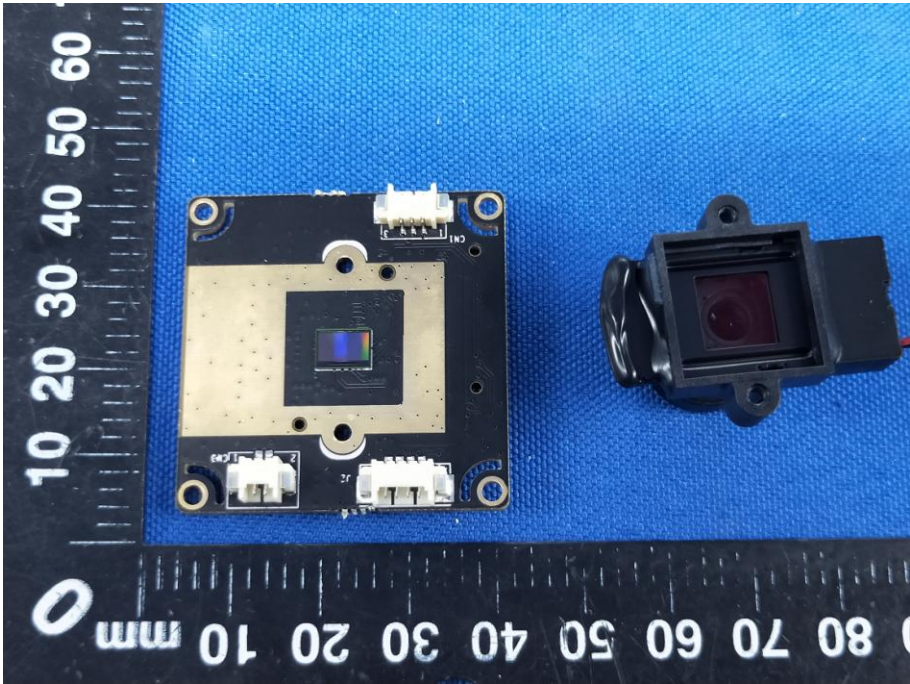
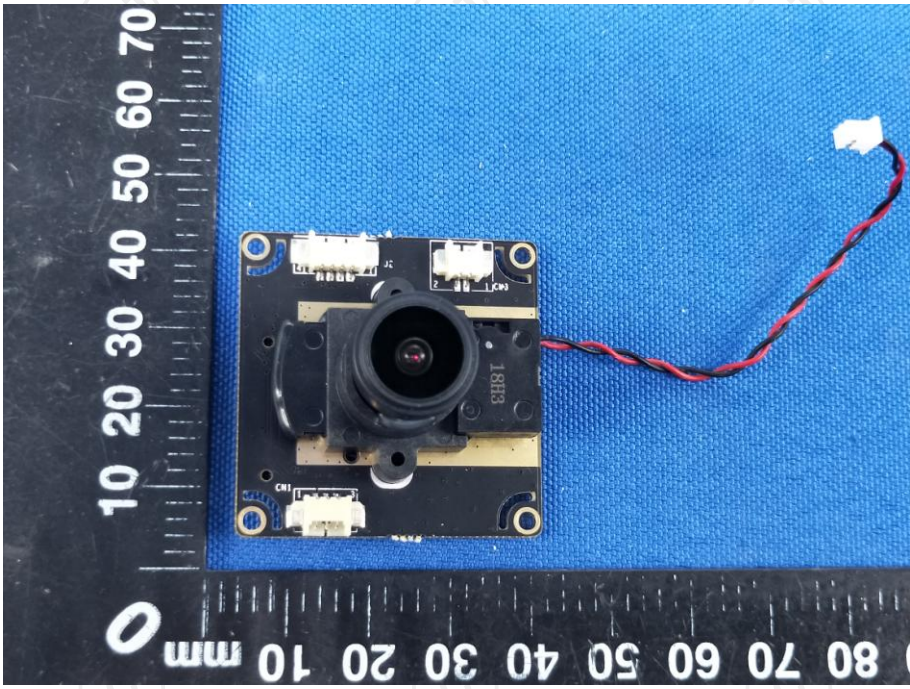


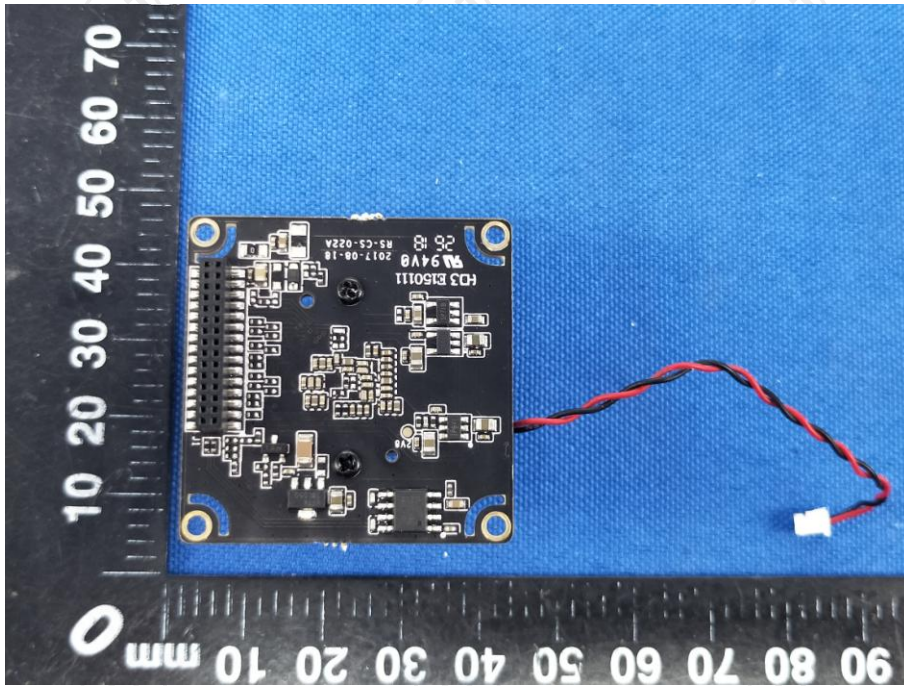


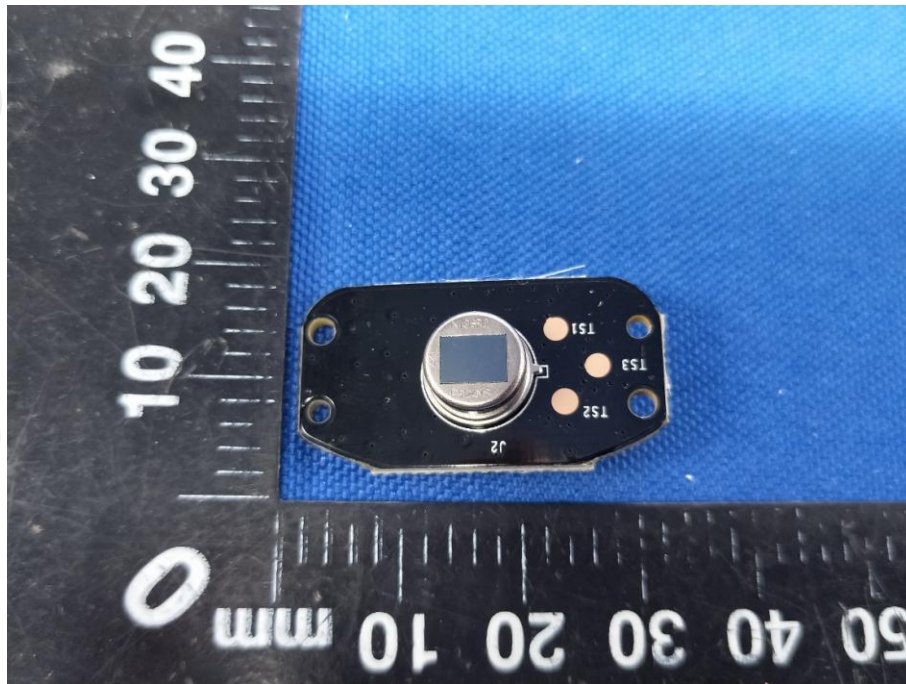
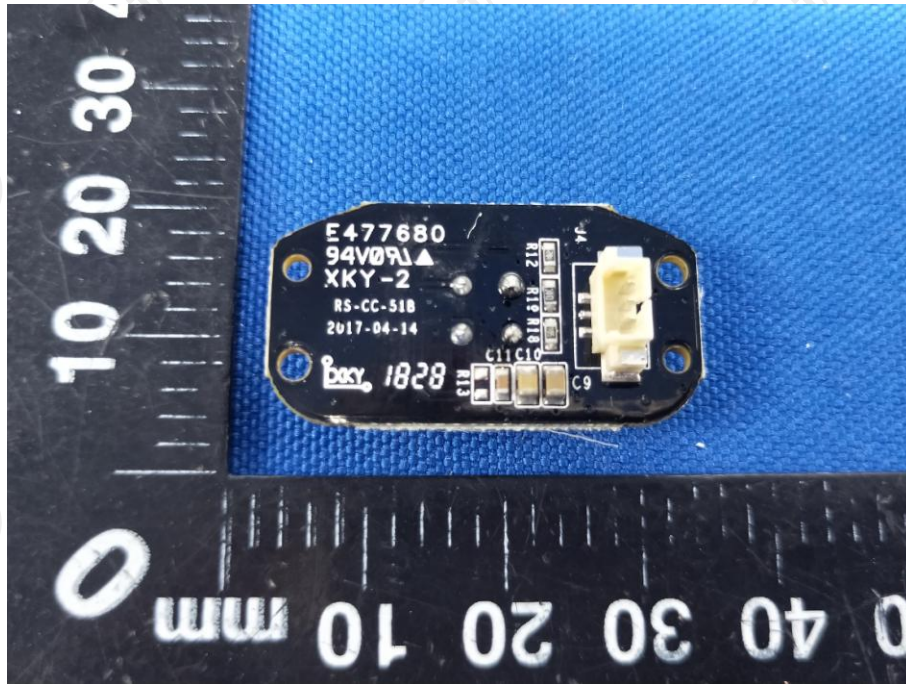
Product: Wireless Camera
Model: RS-CH281SCG-W-36W-PIR
Internal Photos

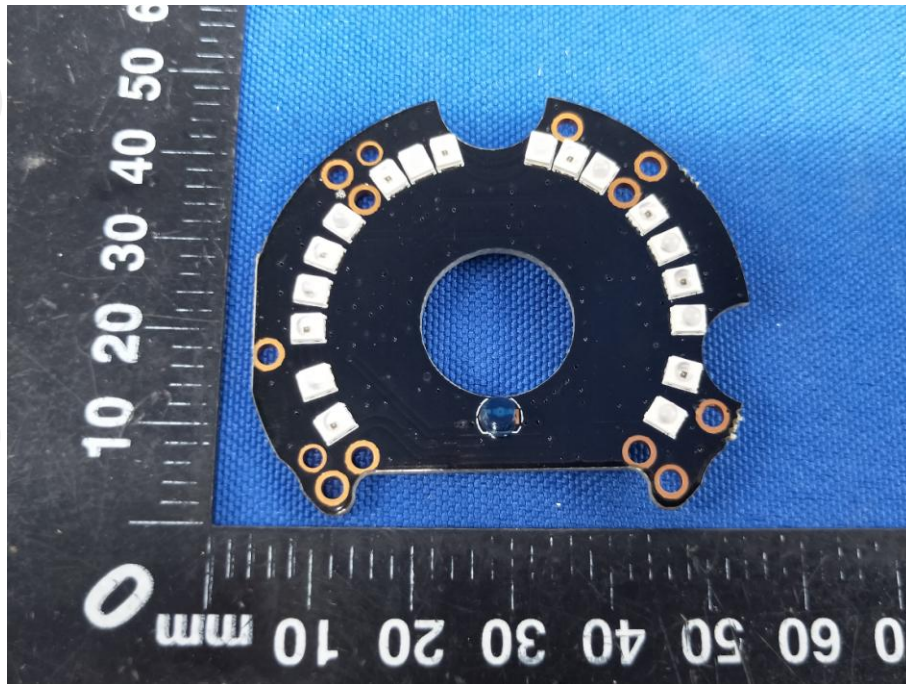
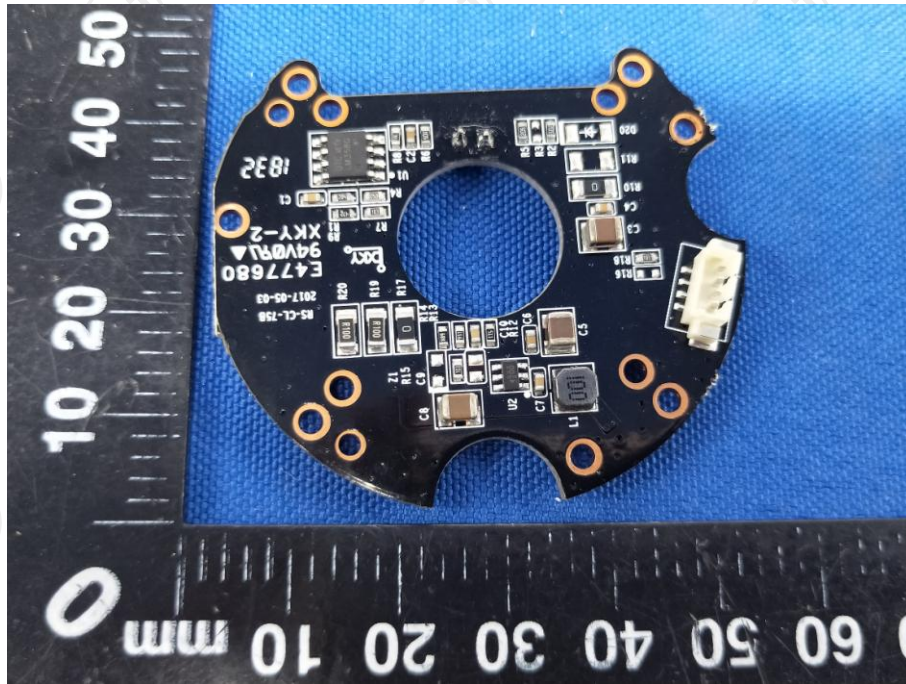












*******END OF REPORT*******