



## User Manual

This is a remote control product, 433MHz frequency product, powered by DC 12V voltage, This remote control is mainly used indoors to control the light to turn on or turn off .Press this button  , the light will be on, Press this button  , the light will be off.

Here are the details of the product.

Product model: D203001000

Working voltage: 12VDC

Working frequency: 433.92MHz

Emission current: 7.5MA

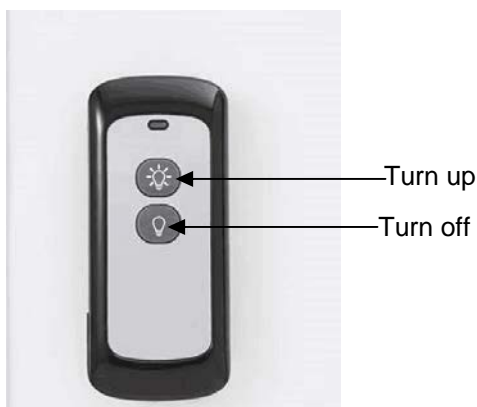
Coding chip: MCU (HS2303)

Modulation mode: ASK (amplitude modulation)

Maximum transmission rate: 10Kbps

Key number: 2KEY

Product pictures:



### FCC Statement:

Any Changes or modifications not expressly approved by the party responsible for compliance could void the user's authority to operate the equipment.

This device complies with part 15 of the FCC Rules. Operation is subject to the following two conditions: (1) This device may not cause harmful interference, and (2) this device must accept any interference received, including interference that may cause undesired operation.

### ISED RSS Warning:

This device complies with Innovation, Science and Economic Development Canada licence-exempt RSS standard(s). Operation is subject to the following two conditions: (1) this device may not cause interference, and (2) this device must accept any interference, including interference that may cause undesired operation of the device.

Le présent appareil est conforme aux CNR d'ISED applicables aux appareils radio exempts de licence. L'exploitation est autorisée aux deux conditions suivantes:

- (1) l'appareil ne doit pas produire de brouillage, et
- (2) l'utilisateur de l'appareil doit accepter tout brouillage radioélectrique subi, même si le brouillage est susceptible d'en compromettre le fonctionnement.

### ISED RF exposure statement:

This equipment complies with ISED radiation exposure limits set forth for an uncontrolled environment. The device has been evaluated to meet general RF exposure requirement.

Le matériel est conforme aux limites de dose d'exposition aux rayonnements énoncés pour un autre environnement. ce dispositif a été évalué à satisfaire l'exigence générale de l'exposition aux rf.