

Feature

- ※ High gain
- ※ Omani-directional
- ※ Wide bandwidth

Application

※GSM850/900/DCS/PCS/WCDMA B1/B2/B4/B5/B8

LTE B1/B2/B3/B4/B5/B7/B8/B12/B17/B20/B28/B38/B40/B41/B42/B66

NR Mode N1/N3/N5/N7/N8/N12/N20/N28/N38/N40/N41/N66/N77/N78

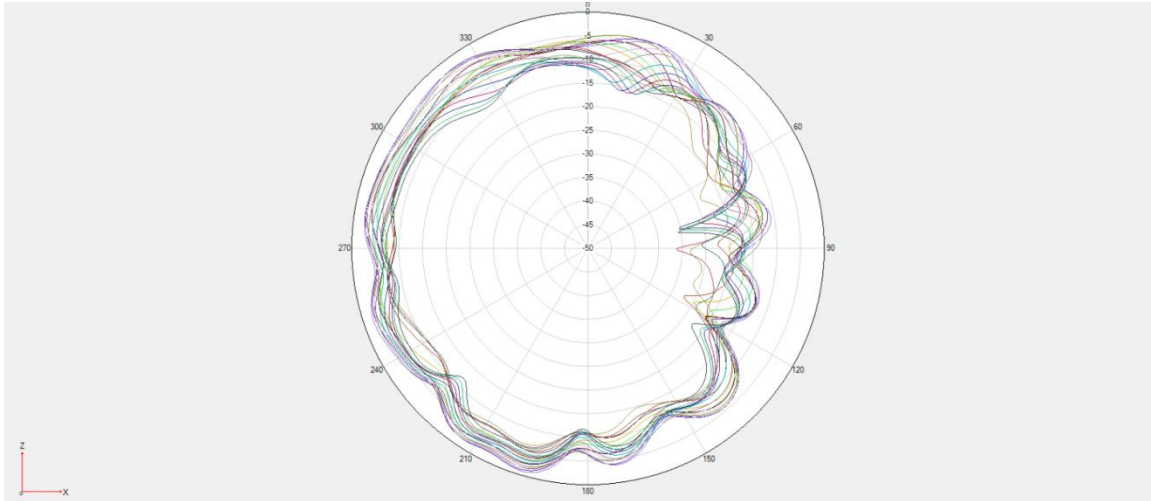
| Name and address of the antenna manufacturer | Model number of the antenna |
|---|--|
| Speed Wireless Technical Co., LTD Company Address: No.99, Weixin Road SIP Suzhou JiangSu Province China | X6871-ANT0-SPD X6871-ANT1-SPD X6871-ANT2-SPD X6871-ANT3-SPD X6871-ANT4-SPD X6871-ANT5-SPD X6871-ANT6-SPD X6871-ANT7-SPD X6871-ANT8-SPD X6871-ANT12-SPD X6871-ANT13-SPD X6871-ANT14-SPD X6871-ANT15-SPD |

| | |
|---------------------------------|---|
| Transmitter Frequency | GSM 850/WCDMA B5/LTE B5 NR n5: 824-849MHz |
| | GSM 900/WCDMA B8/LTE B8 NR n8: 880-915MHz |
| | DCS /WCDMA B4/LTE B3/B4/B66 NR n3/n66: 1710-1785MHz |
| | PCS/WCDMA B2/LTE B2:1850-1910MHz |
| | WCDMA B1/LTE B1 NR n1: 1920-1980MHz |
| | LTE B7 NR n7:2496-2565MHz |
| | LTE B40 NR n40:2300-2400MHz |
| | LTE B38/B41 NR n38/n41:2565-2645MHz |
| | LTE B20 NR n20:832-862MHz |
| | LTE B12/B17/B28 NR n12/n28:710-755MHz |
| | LTE B42 NR n77/n78:3300-4200MHz |
| Receiver Frequency | GSM 850/WCDMA B5/LTE B5 NR n5: 869-894MHz |
| | GSM 900/WCDMA B8/LTE B8 NR n8: 925-960MHz |
| | DCS/LTE B3/B66 NR n3/n66: 1805-1880MHz |
| | WCDMA 4/LTE B4 NR n4: 2110-2155MHz |
| | PCS/WCDMA B2/LTE B2:1930-1990MHz |
| | WCDMA B1/LTE B1 NR n1: 2110 – 2170MHz |
| | LTE B7 NR n7:2620-2690MHz |
| | LTE B40 NR n40:2300-2400MHz |
| | LTE B38/41 NR n38/n41:2565-2645MHz |
| | LTE B20 NR n20:791-821MHz |
| | LTE B12/B17/B28 NR n12/n28:758-803MHz |
| LTE B42 NR n77/n78:3300-4200MHz | |

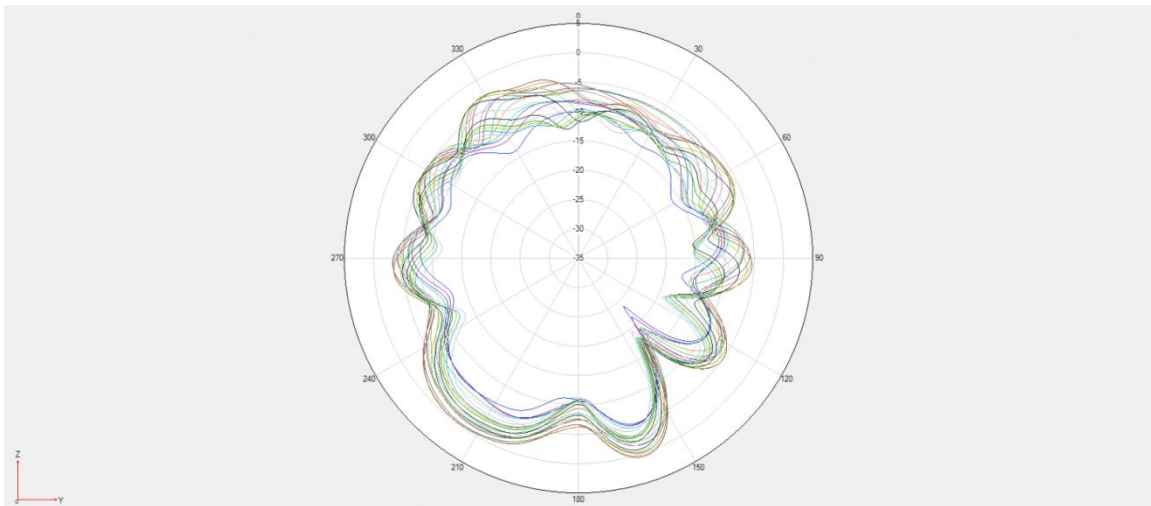
| | | |
|------------------------------------|-----------------------------------|---|
| Antenna Gain | ANT0(MB DRX MIMO&N77/78 DRX MIMO) | LTE B1/B3 NR n1/3: -4.7dbi |
| | | LTE B42, NR77/78:-1.8dbi |
| | ANT1(LB TRX) | LTE B12/B17/B28 NR n12/n28:-6.4dbi |
| | | GSM 850, WCDMA B5, LTE B5 B20 NR n5 N20:-6.8dbi |
| | | GSM900, WCDMA B8, LTE B8 NR n8:-7.1dbi |
| | ANT2(MHB PRX) | PCS/WCDMA B1/B2/LTE B1/B2/N1/N2:-3.9dbi |
| | | DCS /LTE B3/B4/B66/ N3/N4N66:-4.9dbi |
| | | LTE B7/B38/B40/B41/N7N38/N40/N41:-2.1dbi |
| | ANT3(LB DRX) | LTE B12/B17/B28 NR n12/n28:-5.8dbi |
| | | GSM 850, WCDMA B5, LTE B5 NR n5: -5.3dbi |
| | | GSM900, WCDMA B8, LTE B8 NR n8:-5.8dbi |
| | ANT4(MHB DRX) | WCDMA B1 , LTE B1, NR n1:-4.8dbi |
| | | DCS, LTE B3/4/66, NR n3/66:-4.2dbi |
| | | PCS/WCDMA B2/LTE B2 :-5.6dbi |
| | | LTE B40, NR n40:-4.7dbi |
| | | LTE B7/B38/B41,NR n7/38/41:-5.3dbi |
| | ANT5(PRX MIMO) | LTE B42, NR77/78:-4.6dbi |
| | ANT6(ENDC TRX) | LTE B1, NR n1:-5.6dbi |
| | | LTE B3/4/66, NR n3/66:-5.2dbi |
| | | LTE B40, NR n40:-5.7dbi |
| LTE B7/B38/B41,NR n7/38/41:-5.3dbi | | |
| ANT7(PRX) | LTE B42, NR77/78:-5.8dbi | |
| ANT8(N77/78 DRX) | LTE B42, NR77/78:-1.8dbi | |
| ANT12 | GPS L1:-2.2dbi | |
| | BT&WIFI 2.4G MIMO1:-4.3dbi | |
| ANT13 | WIFI 2.4G MIMO2:-2.55dbi | |
| | WIFI 5G MIMO1:-1.64dbi | |
| ANT14 | GPS L5:-7.5dbi | |
| ANT15 | WIFI 5G MIMO2:-3.6dbi | |

※ Antenna Gain

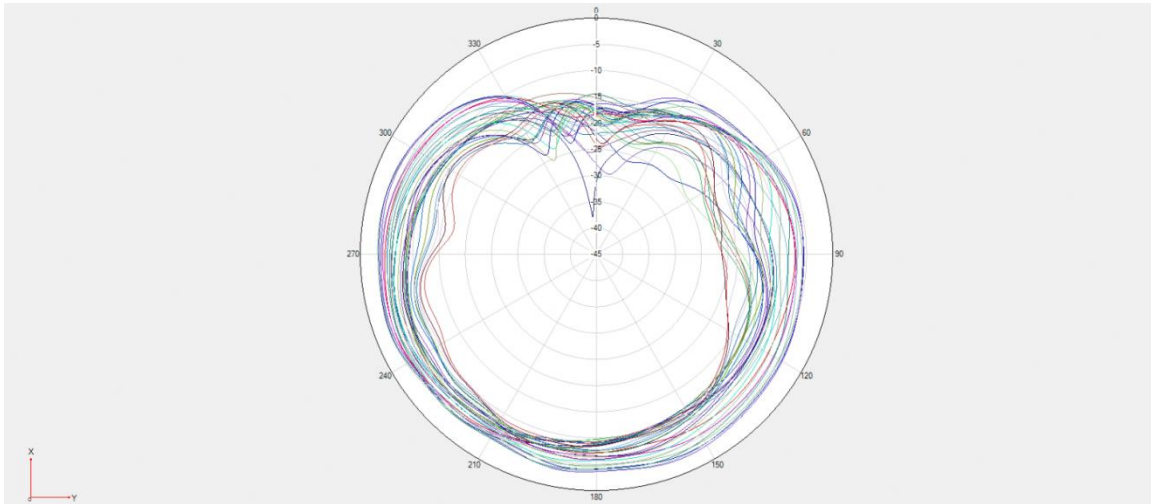
ANT0



B42;N77/78 $\Phi=0^\circ$



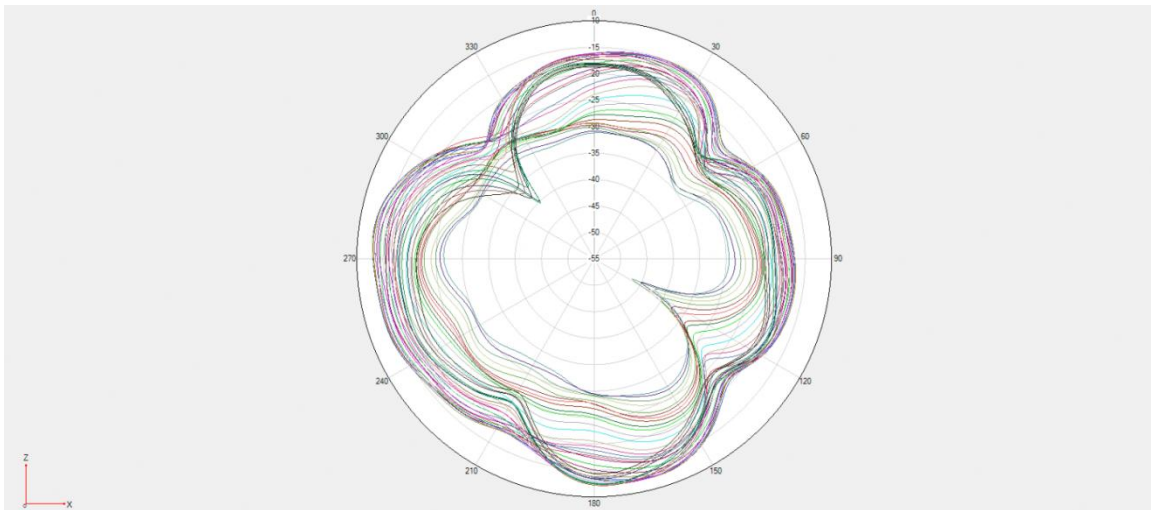
B42;N77/78 $\Phi=90^\circ$



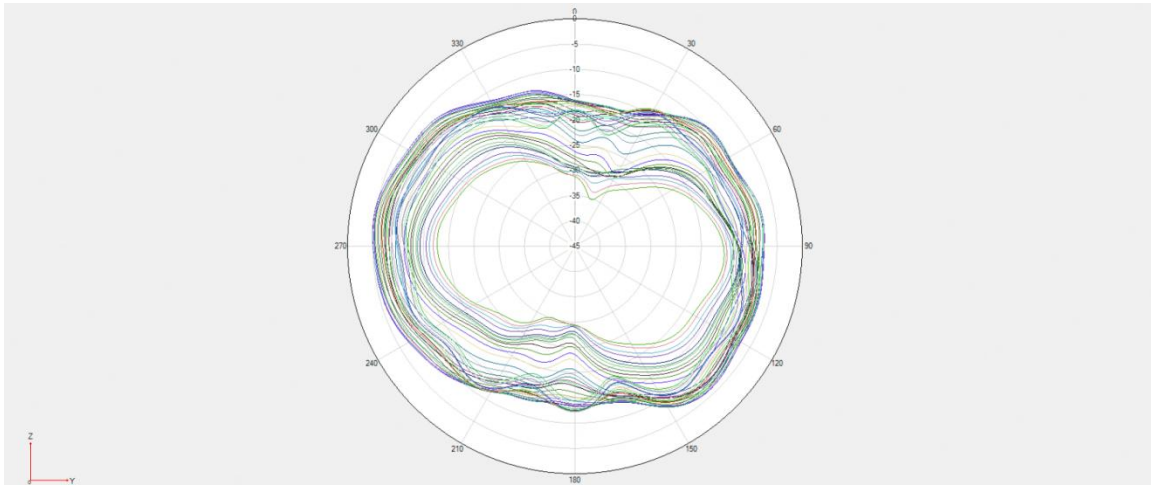
B42;N77/78 Theta=90deg

※ Antenna Gain

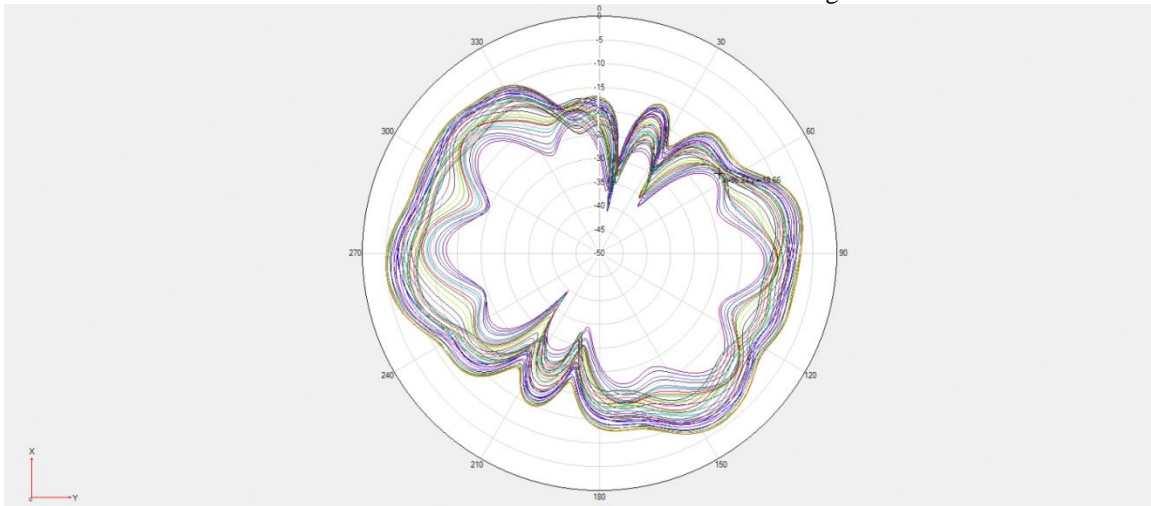
ANT1



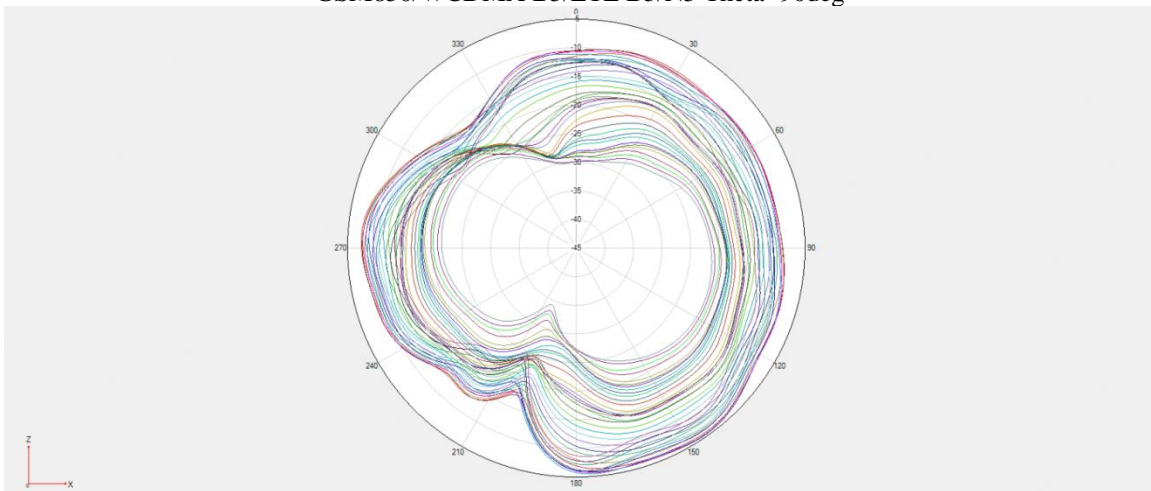
GSM850/WCDMA B5/LTE B5/N5 Phi=0deg



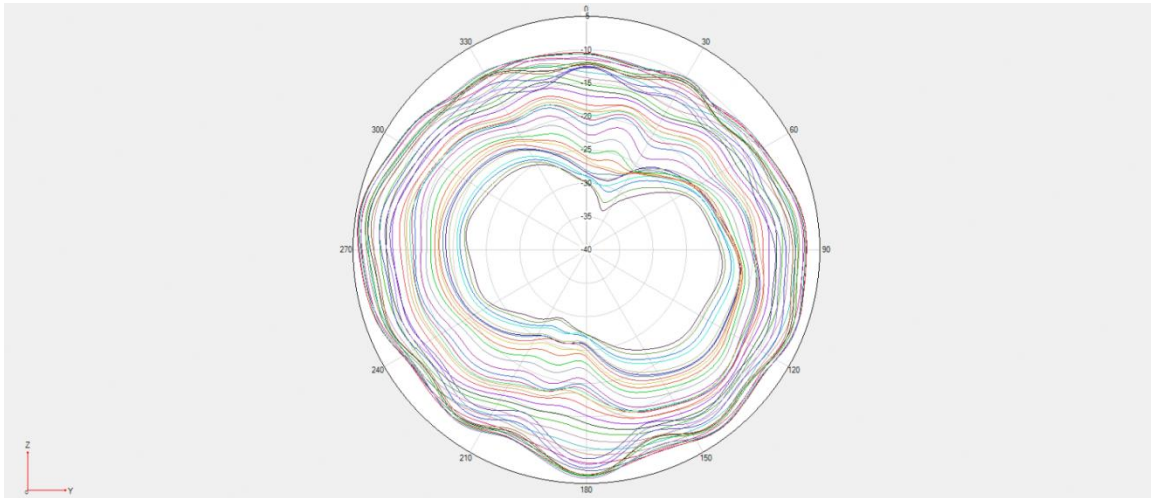
GSM850/WCDMA B5/LTE B5/N5 $\Phi=90^\circ$



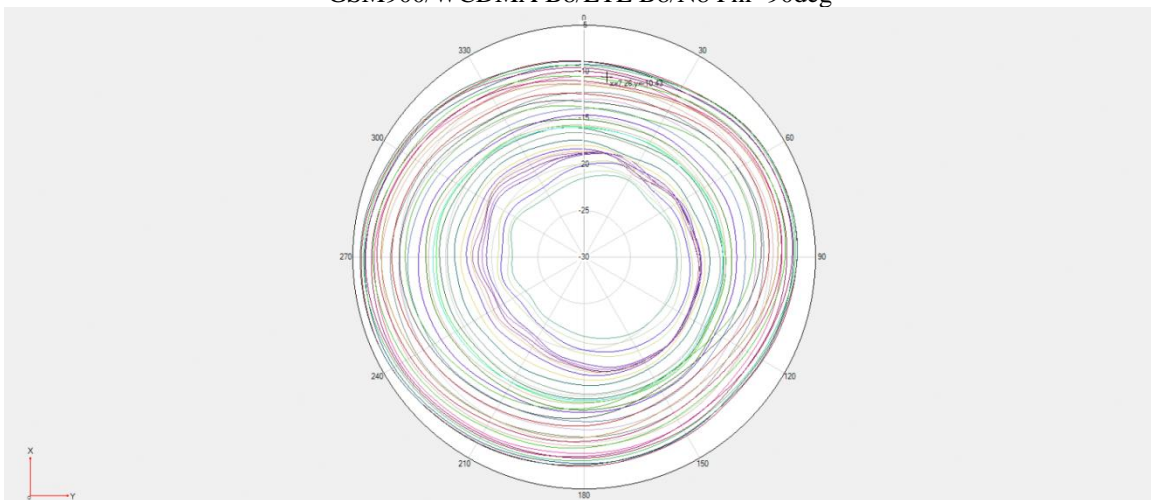
GSM850/WCDMA B5/LTE B5/N5 $\Theta=90^\circ$



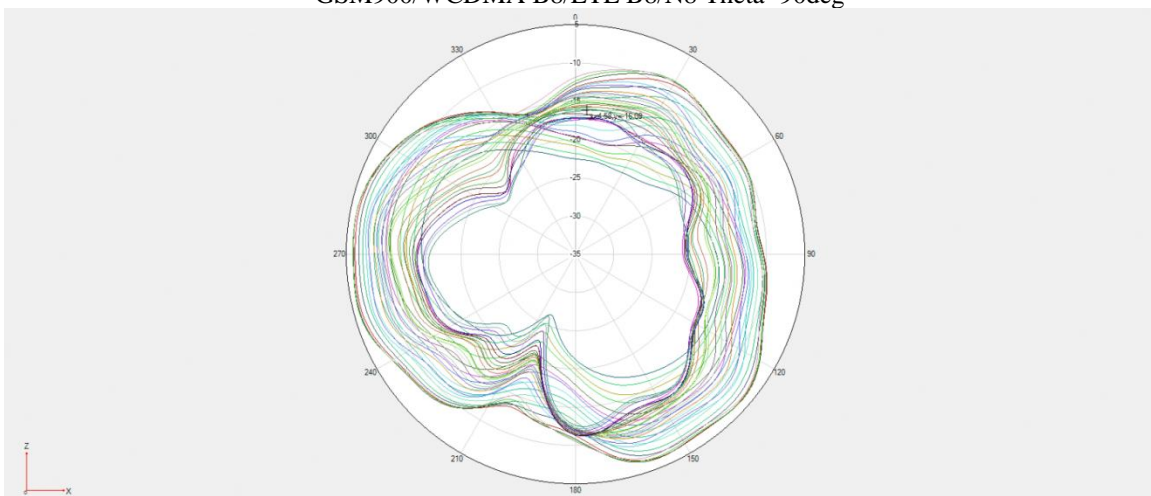
GSM900/WCDMA B8/LTE B8/N8 $\Phi=0^\circ$



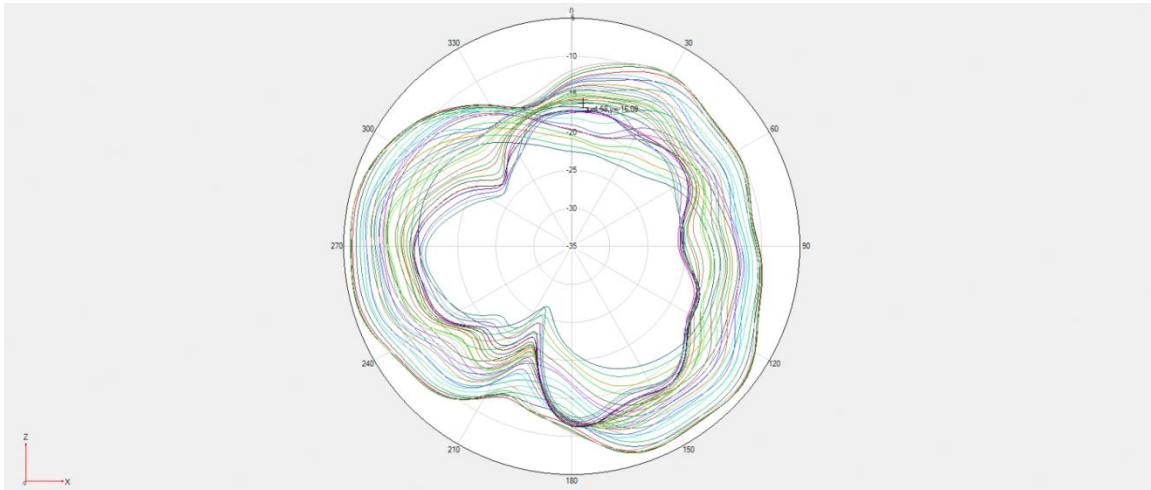
GSM900/WCDMA B8/LTE B8/N8 Phi=90deg



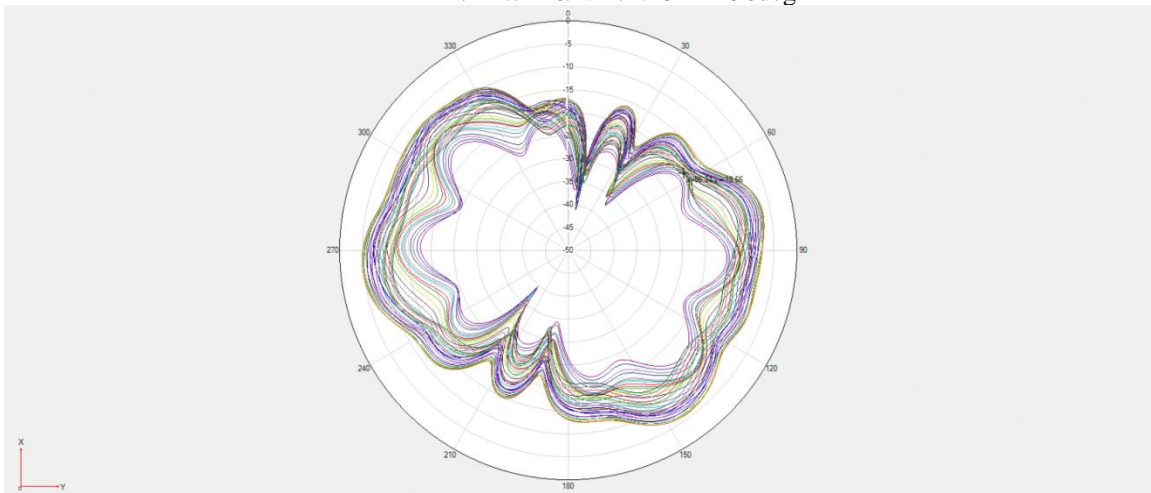
GSM900/WCDMA B8/LTE B8/N8 Theta=90deg



LTE B12/B17/B28/N12/N28 Phi=0deg

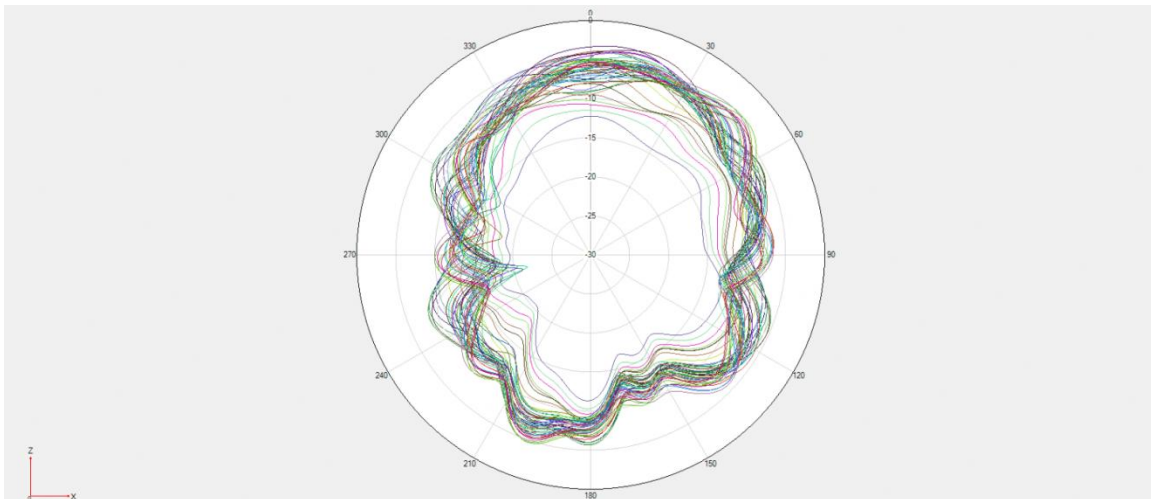


LTE B12/B17/B28/N12/N28 Phi=90deg

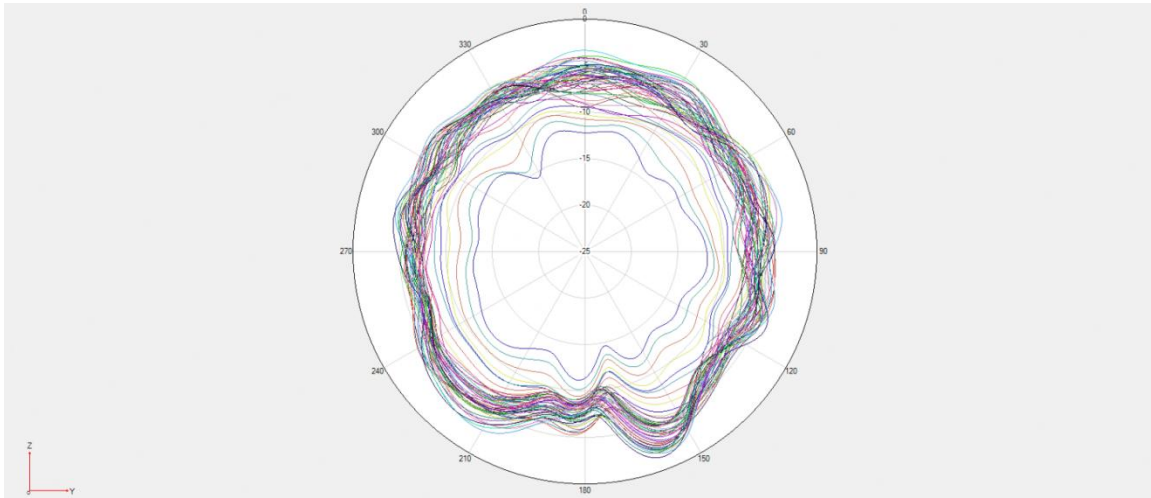


LTE B12/B17/B28/N12/N28 Theta=90deg

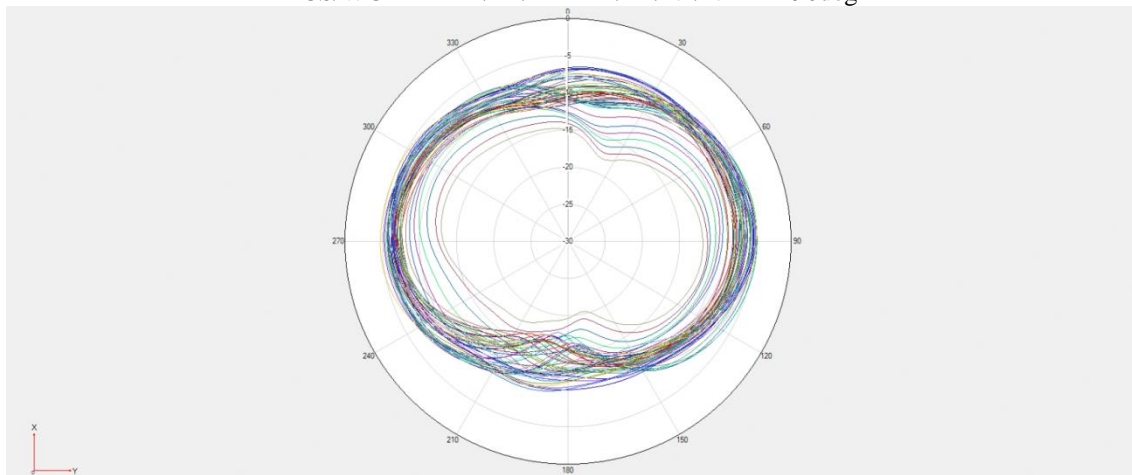
※ Antenna Gain
ANT2



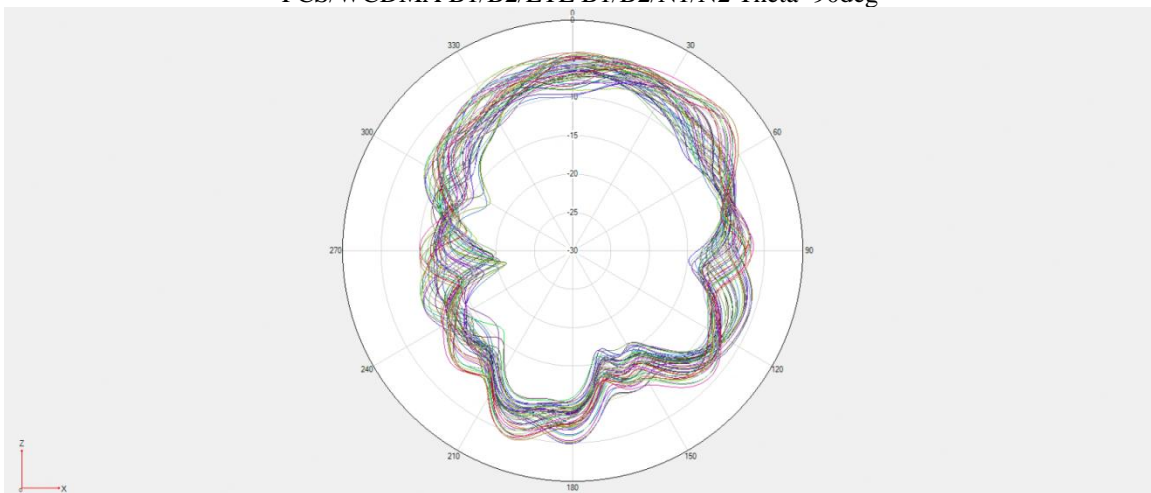
PCS/WCDMA B1/B2/LTE B1/B2/N1/N2 Phi=0deg



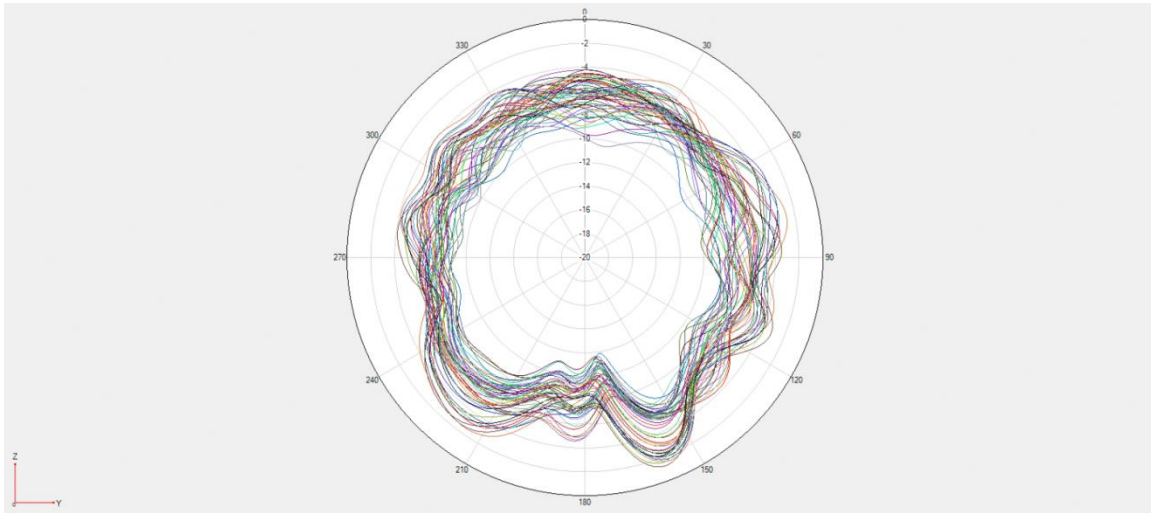
PCS/WCDMA B1/B2/LTE B1/B2/N1/N2 $\Phi=90^\circ$



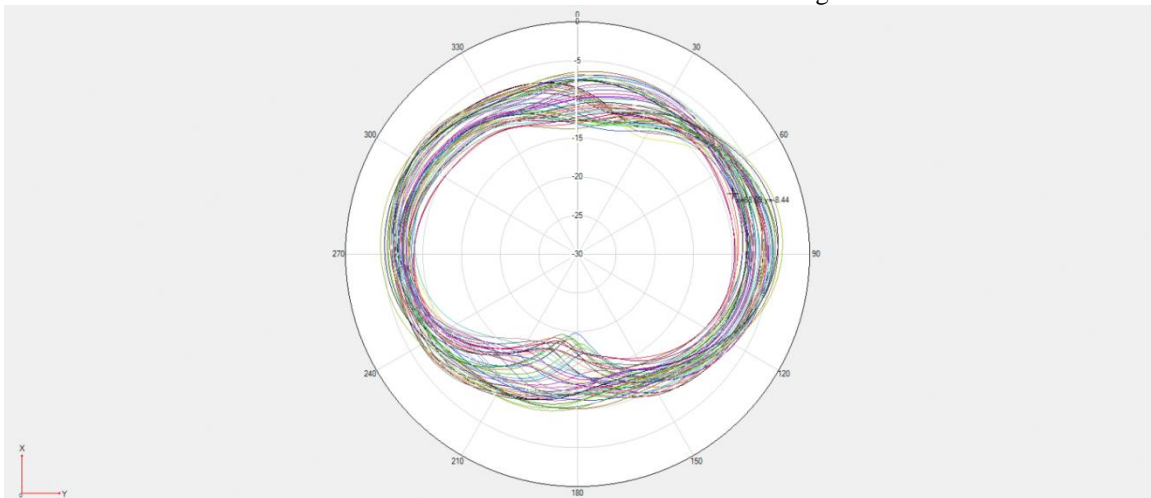
PCS/WCDMA B1/B2/LTE B1/B2/N1/N2 $\Theta=90^\circ$



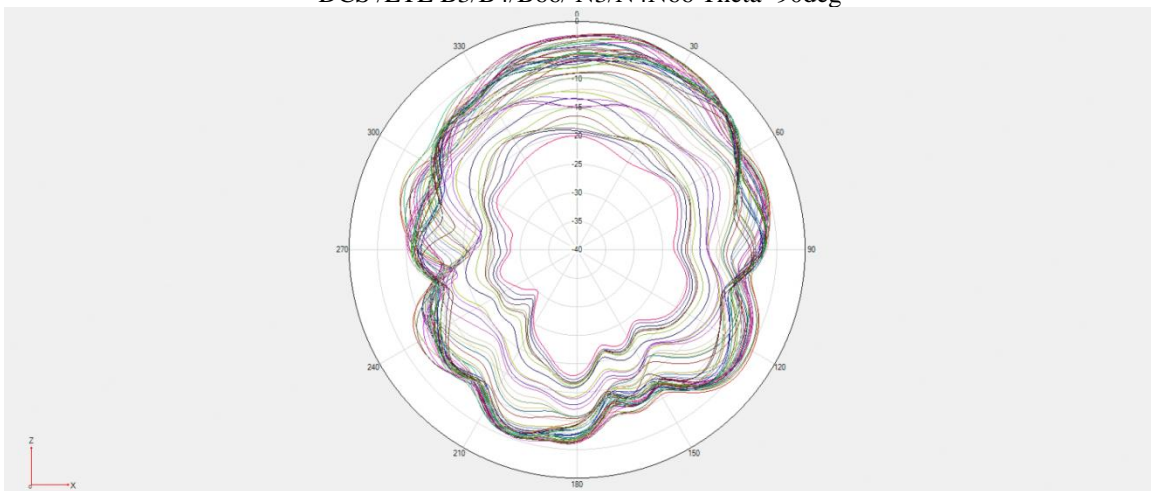
DCS /LTE B3/B4/B66/ N3/N4N66 $\Phi=0^\circ$



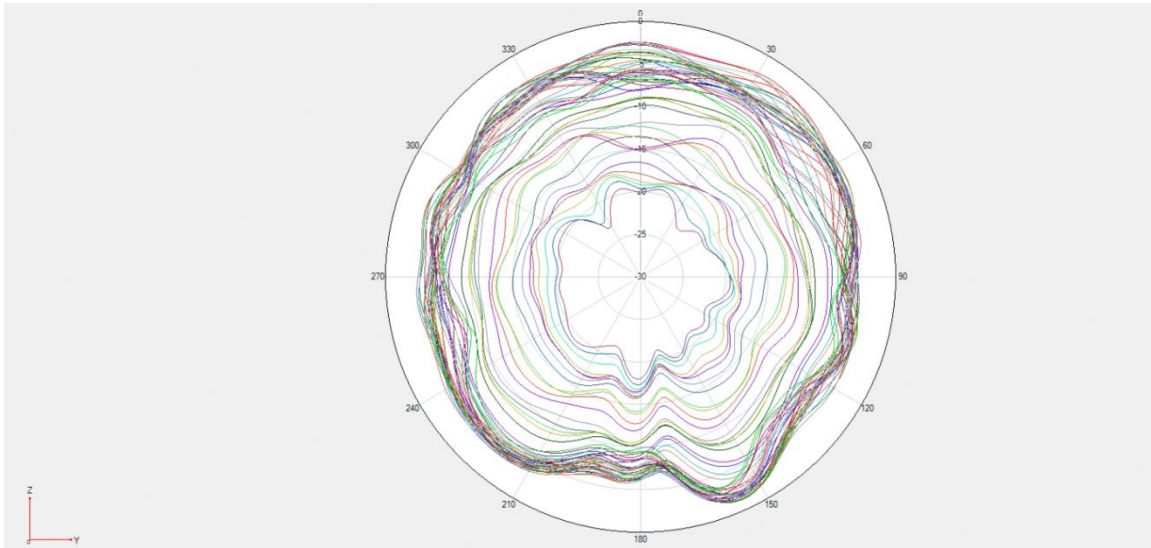
DCS /LTE B3/B4/B66/ N3/N4N66 $\Phi=90^\circ$



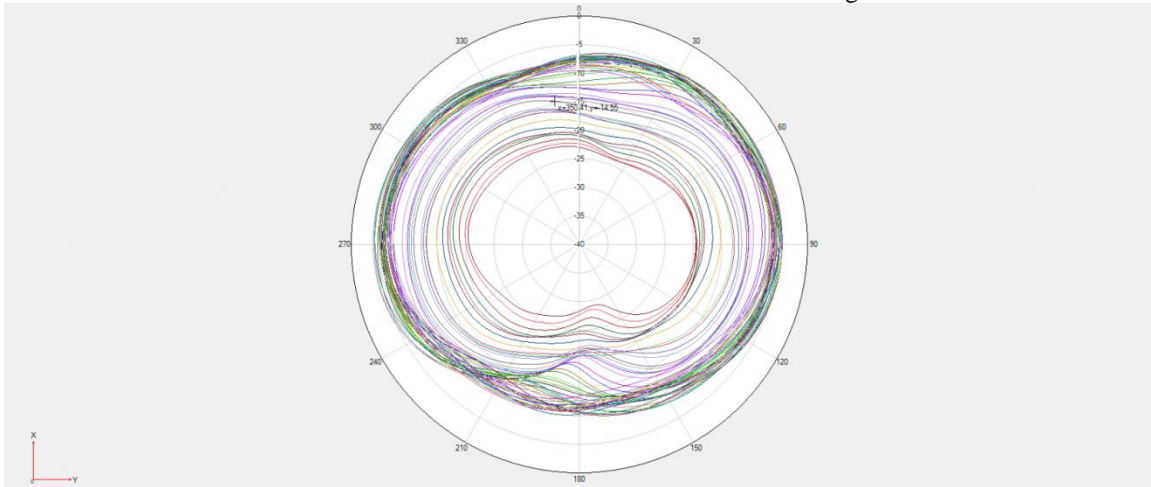
DCS /LTE B3/B4/B66/ N3/N4N66 $\Theta=90^\circ$



LTE B7/B38/B40/B41/N7N38/N40/N41 $\Phi=0^\circ$

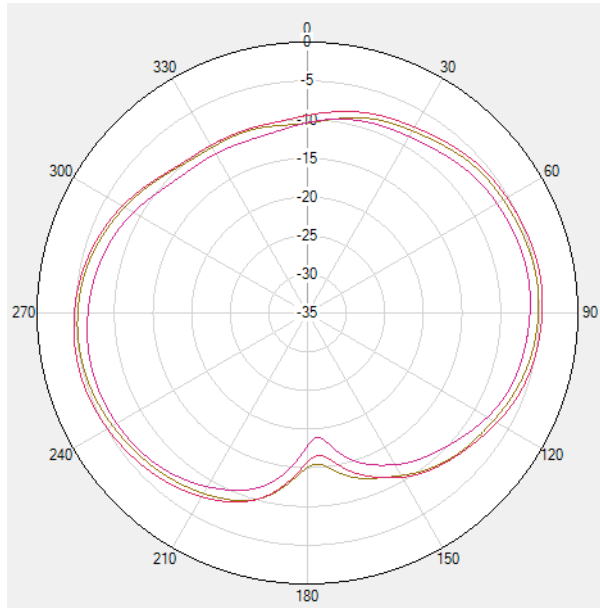


LTE B7/B38/B40/B41/N7N38/N40/N41 Phi=90deg

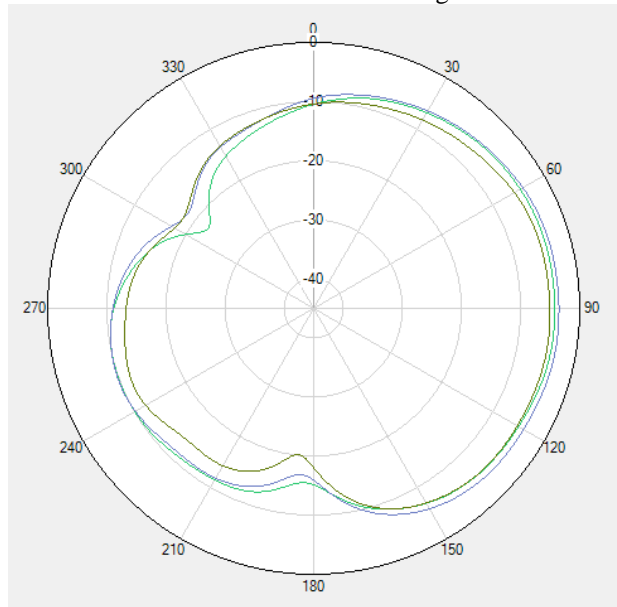


LTE B7/B38/B40/B41/N7N38/N40/N41 Theta=90deg

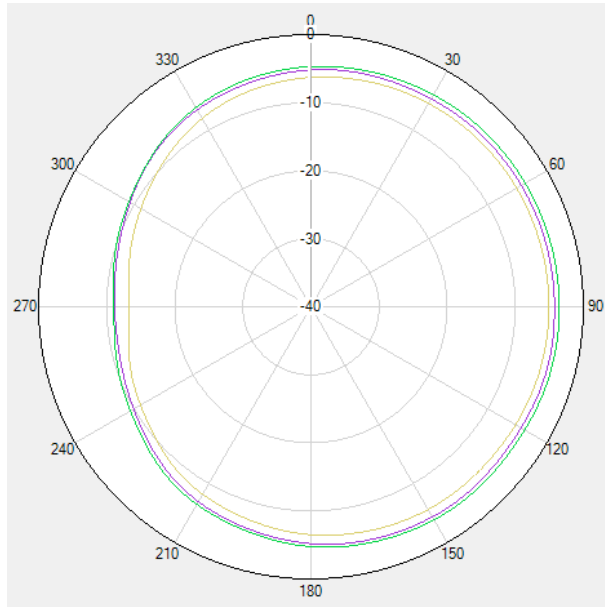
※ Antenna Gain
ANT3



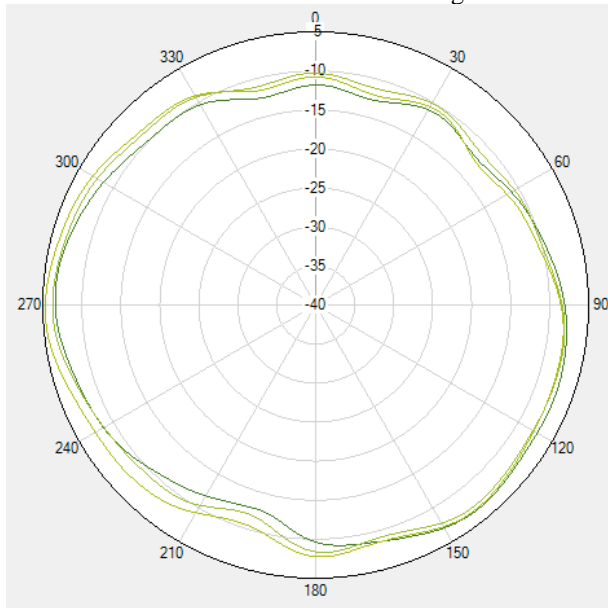
LTE B28/N28 Phi=0deg



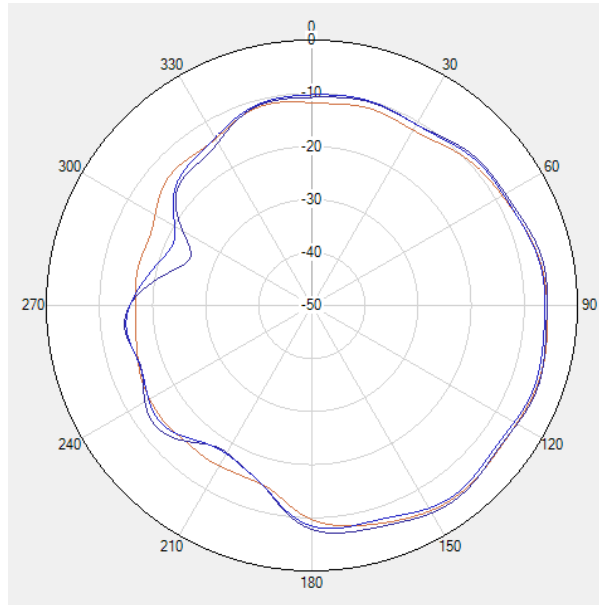
LTE B28/N28 Phi=90deg



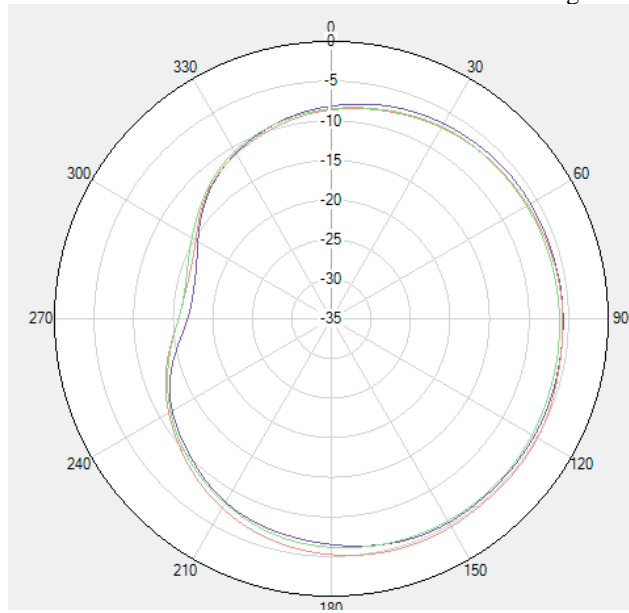
LTE B28/N28 Theta=90deg



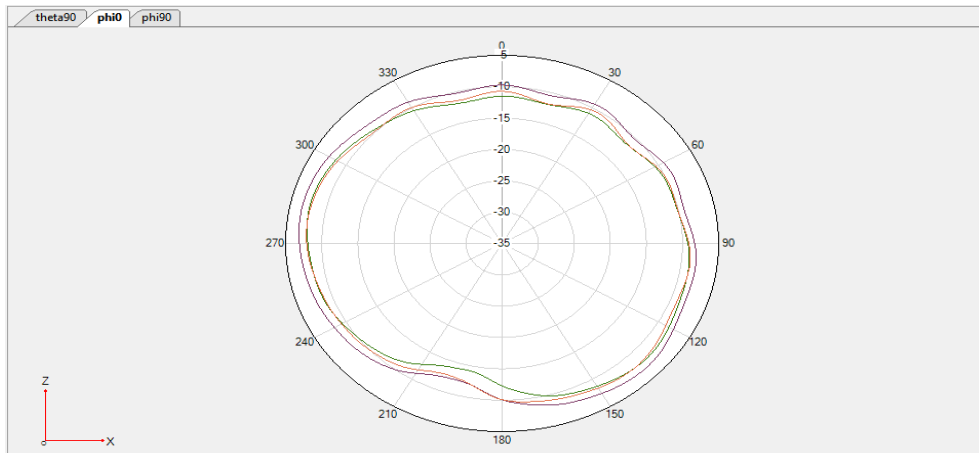
GSM 900/WCDMA B8/LTE B8/N8 Phi=0deg



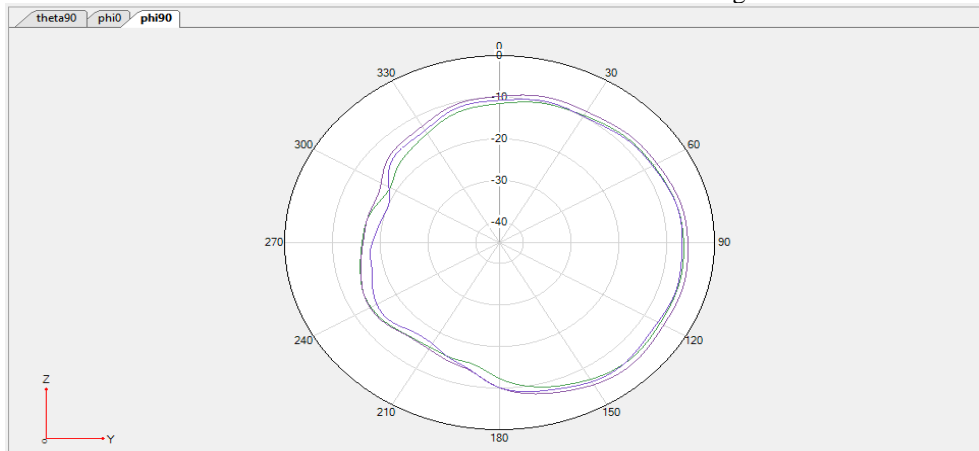
GSM 900/WCDMA B8/LTE B8/N8 Phi=90deg



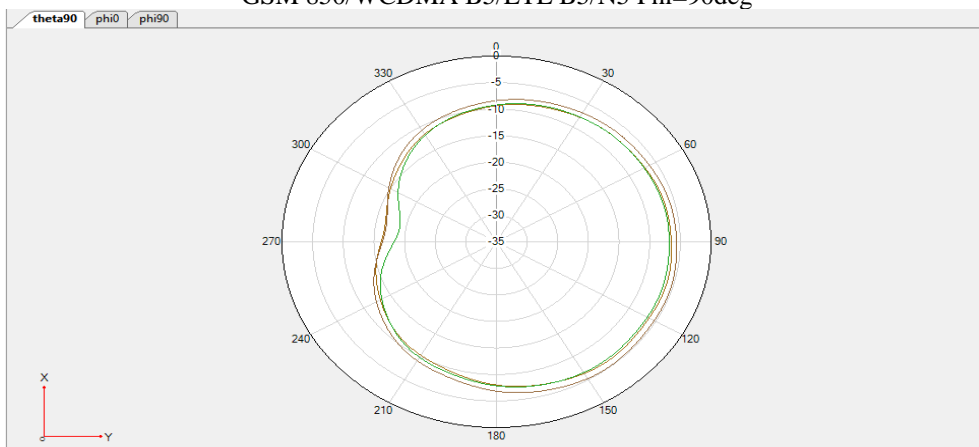
GSM 900/WCDMA B8/LTE B8/N8 Theta=90deg



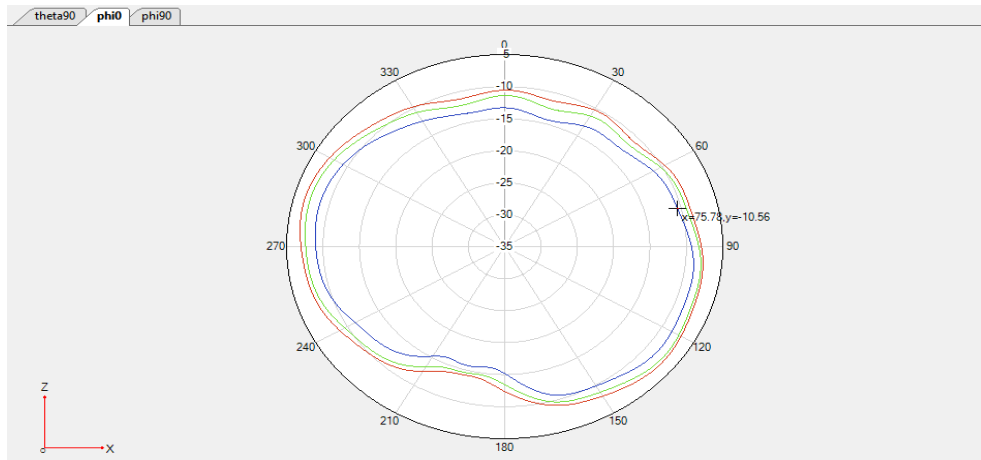
GSM 850/WCDMA B5/LTE B5/N5 $\Phi=0^\circ$



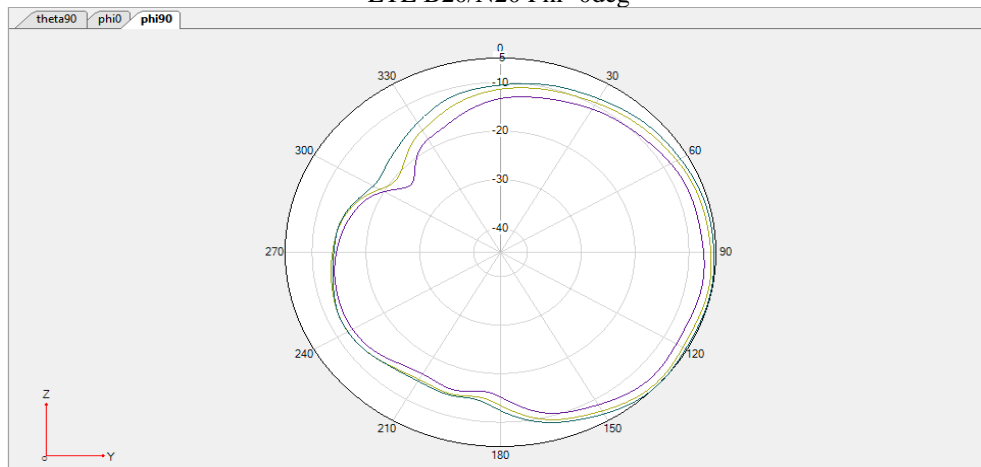
GSM 850/WCDMA B5/LTE B5/N5 $\Phi=90^\circ$



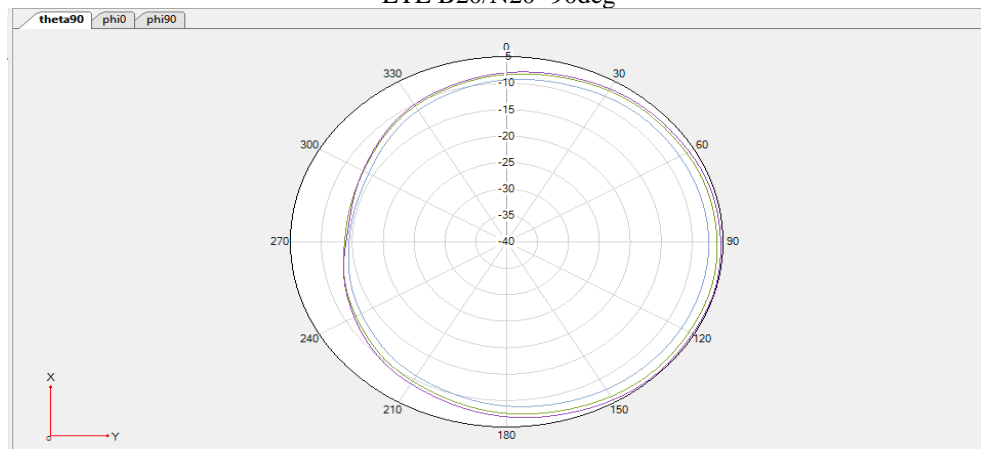
GSM 850/WCDMA B5/LTE B5/N5 $\Theta=90^\circ$



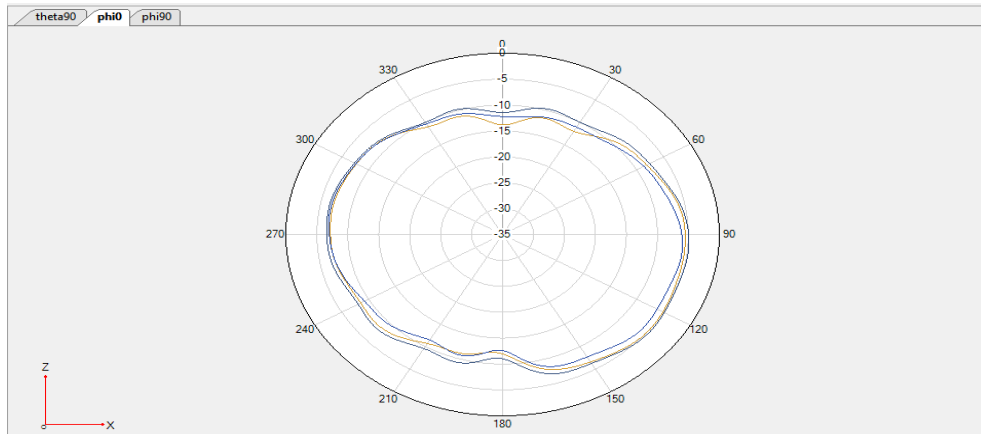
LTE B20/N20 $\Phi=0^\circ$



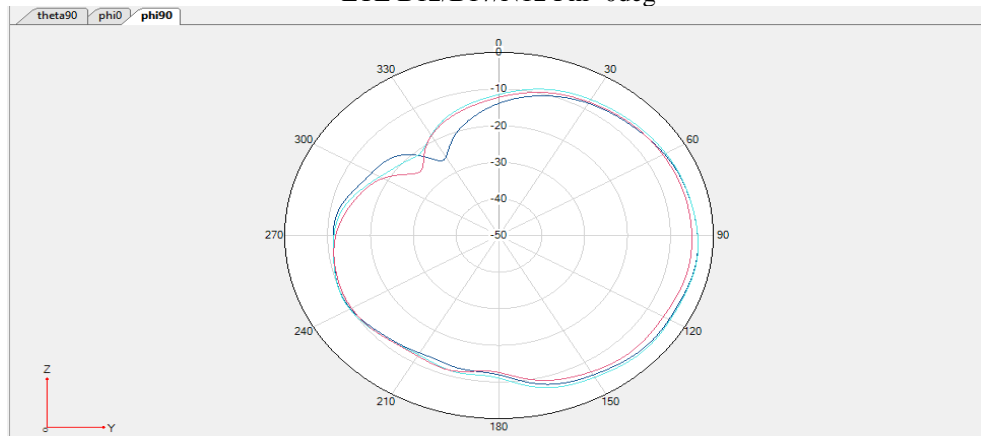
LTE B20/N20 $\Phi=90^\circ$



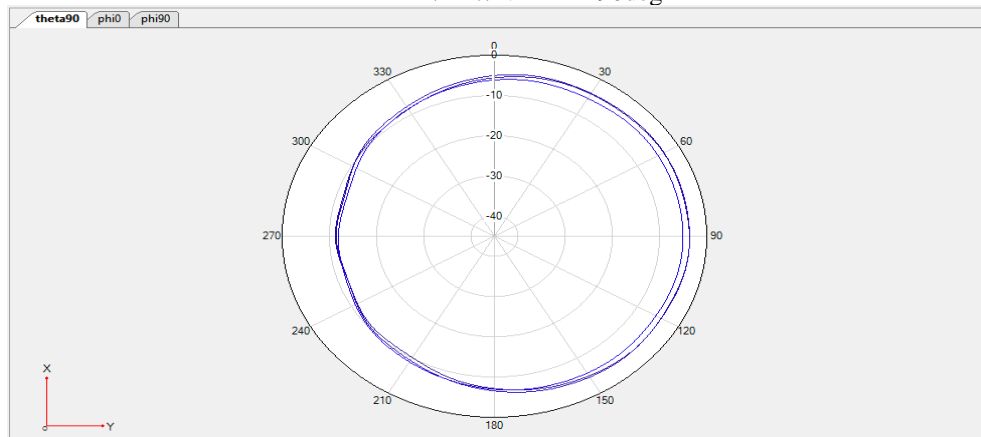
LTE B20/N20 $\Theta=90^\circ$



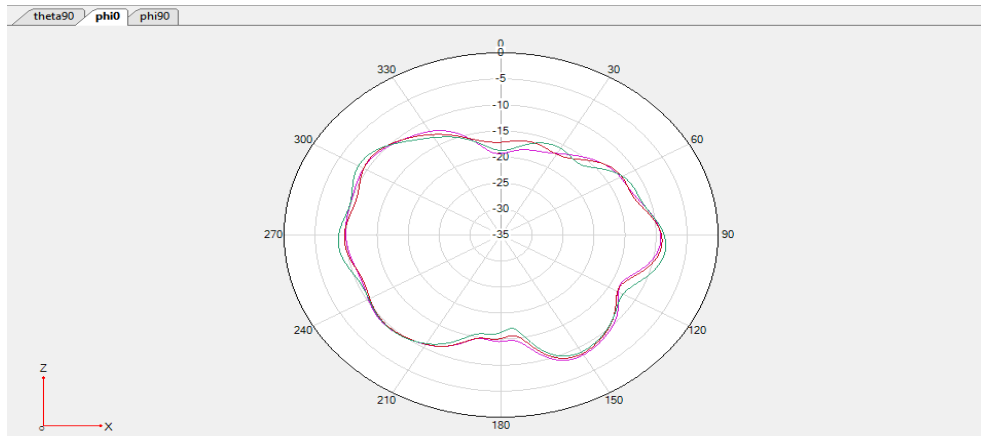
LTE B12/B17/N12 Phi=0deg



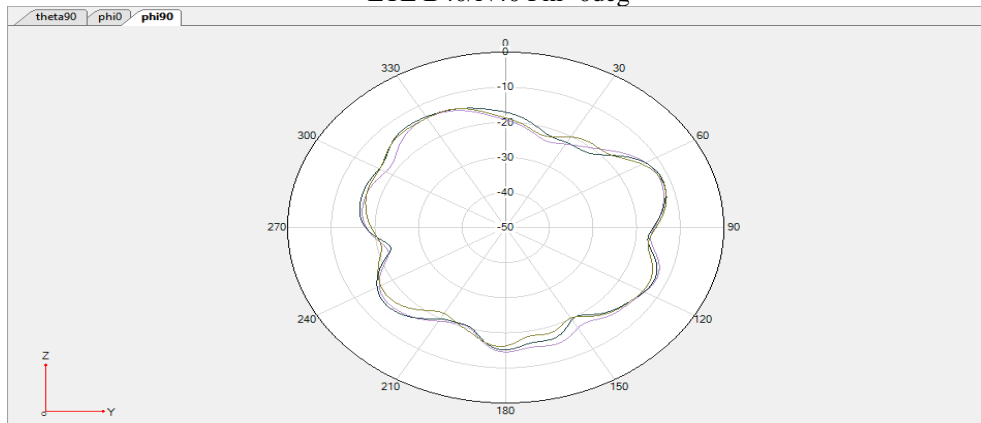
LTE B12/B17/N12 Phi=90deg



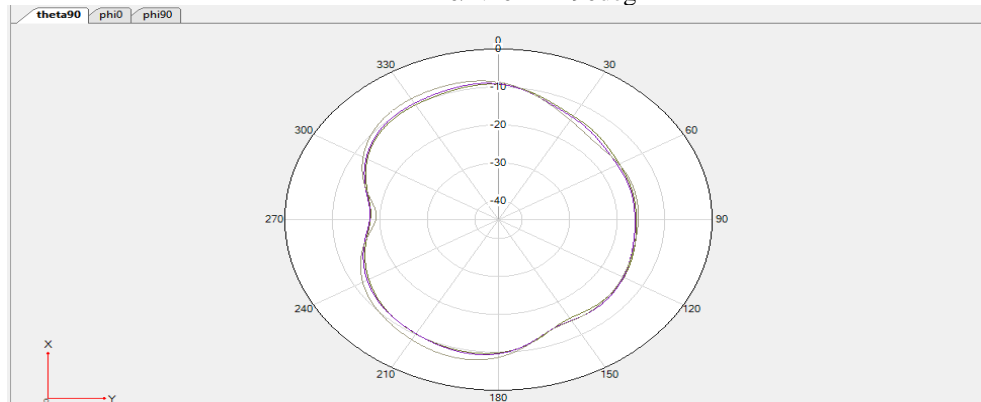
LTE B12/B17/N12 Theta=90deg



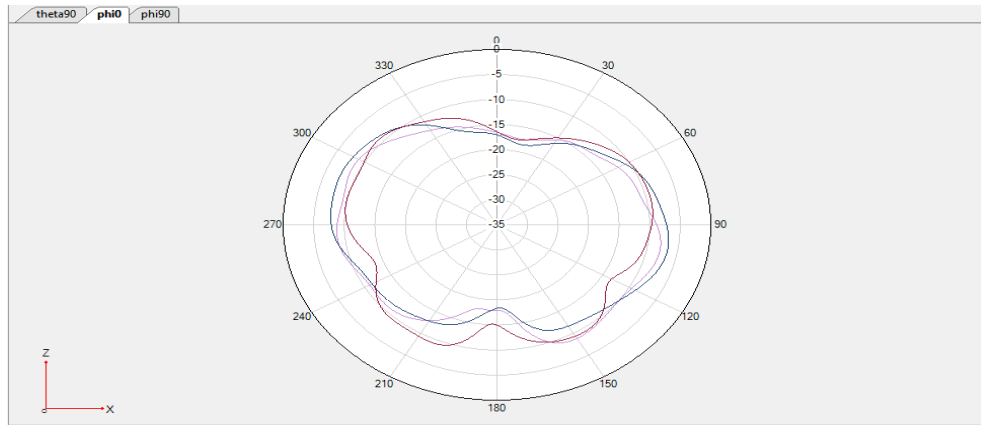
LTE B40/N40 Phi=0deg



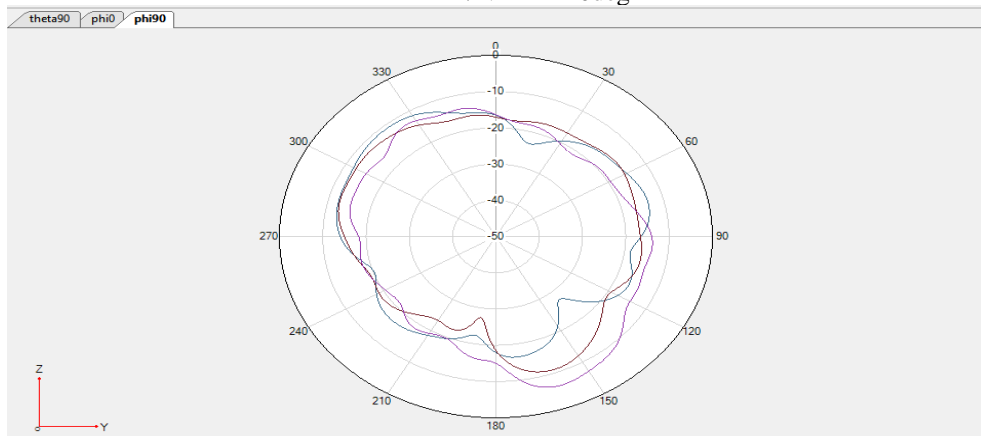
LTE B40/N40 Phi=90deg



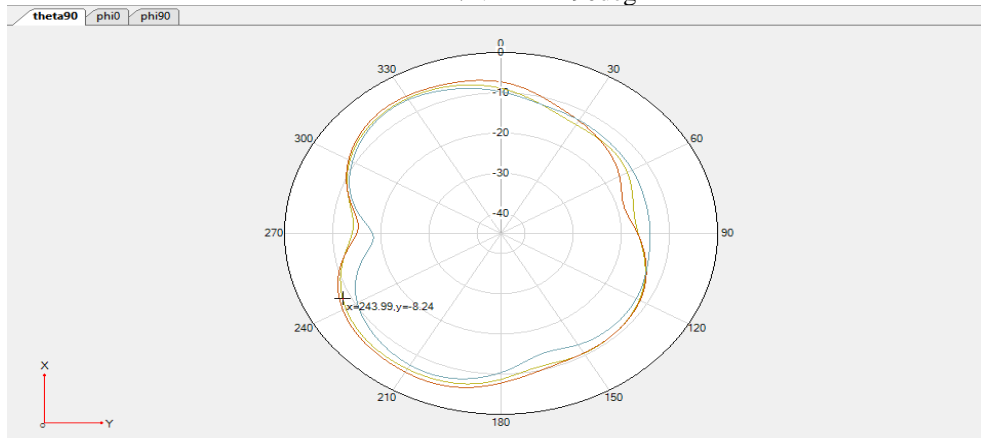
LTE B40/N40 Theta=90deg



LTE B41/N41 Phi=0deg



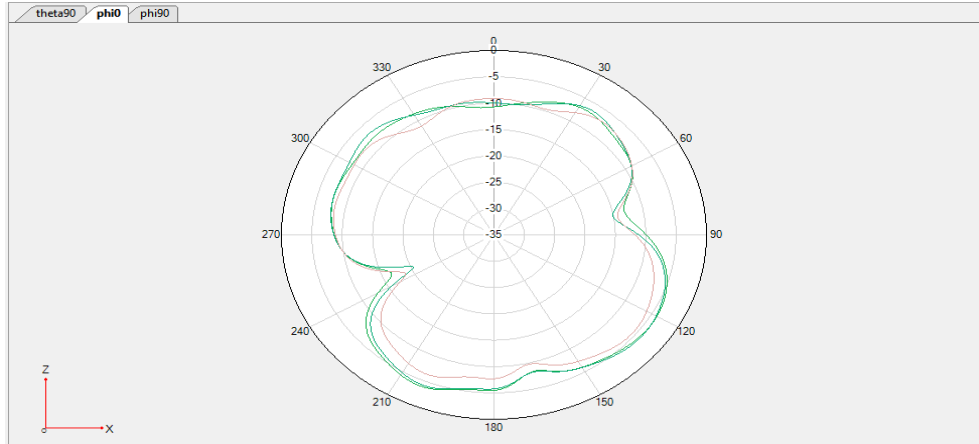
LTE B41/N41 Phi=90deg



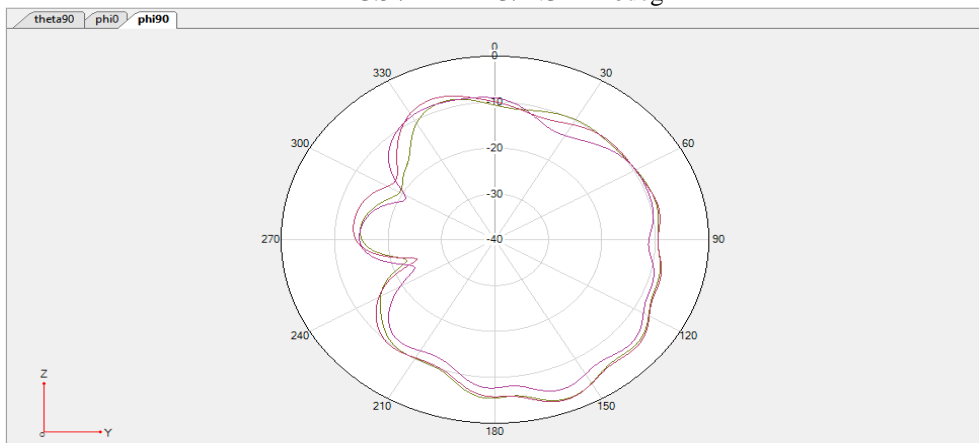
LTE B41/N41 Theta=90deg

※ Antenna Gain

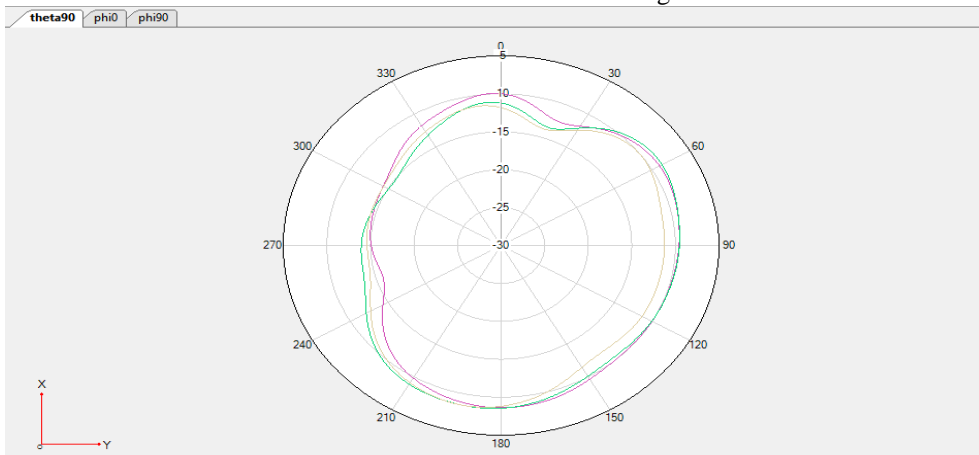
ANT4



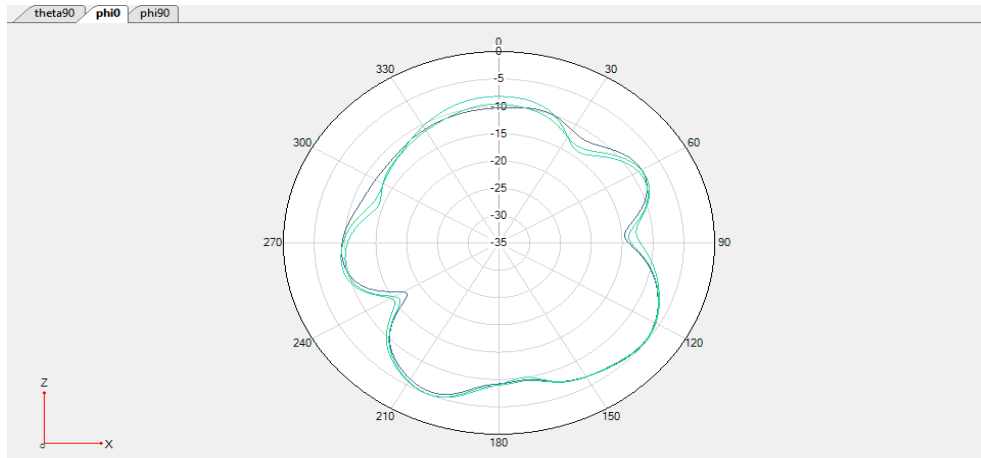
DCS /LTE B3/N3Phi=0deg



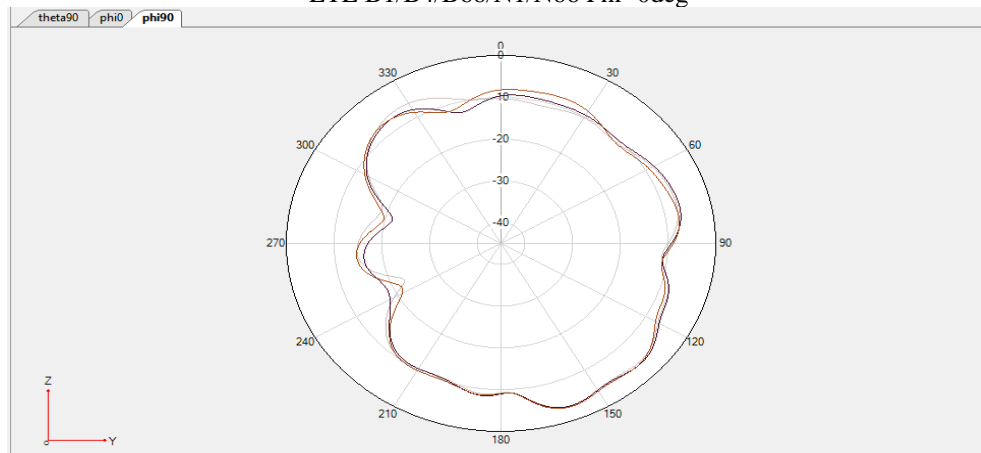
DCS /LTE B3/N3Phi=90deg



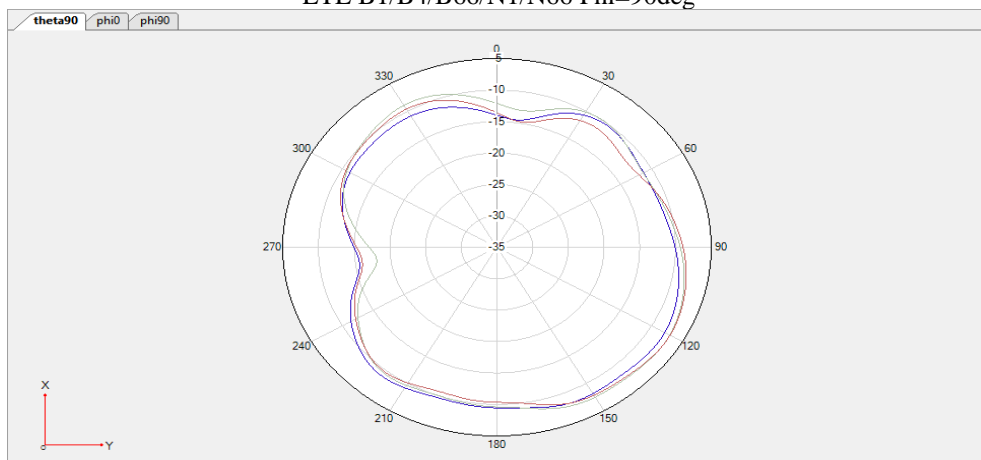
DCS /LTE B3/N3Theta=90deg



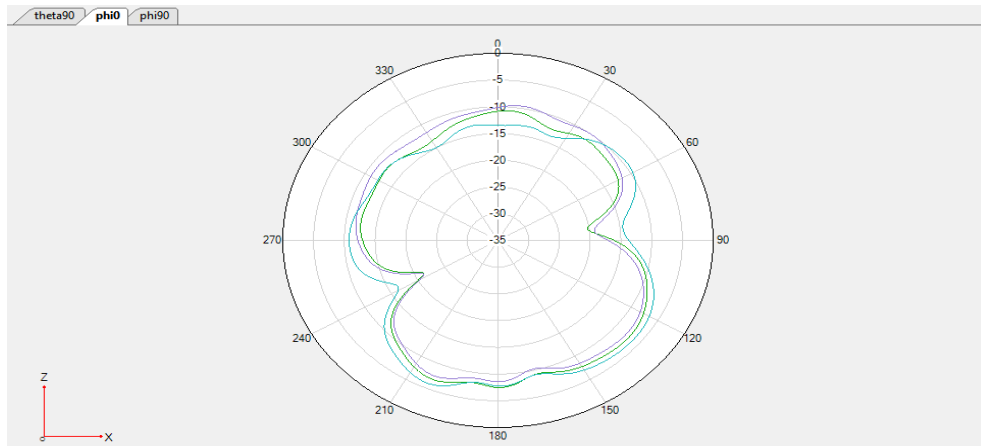
LTE B1/B4/B66/N1/N66 Phi=0deg



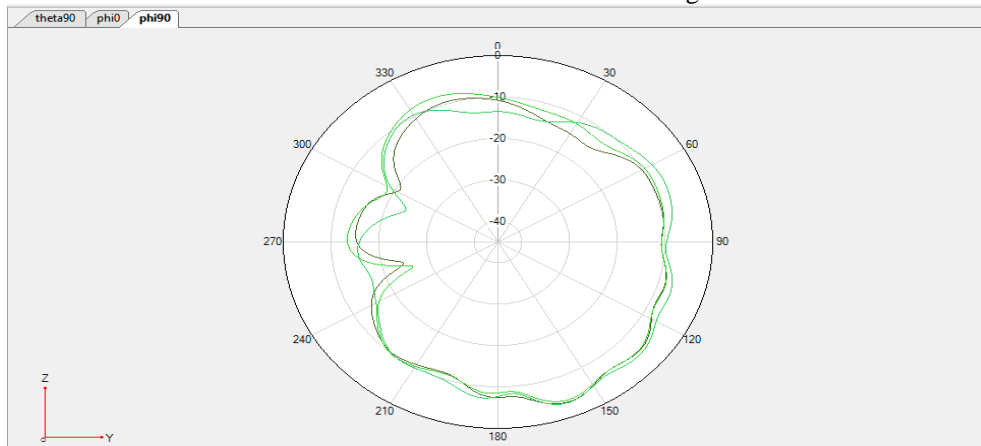
LTE B1/B4/B66/N1/N66 Phi=90deg



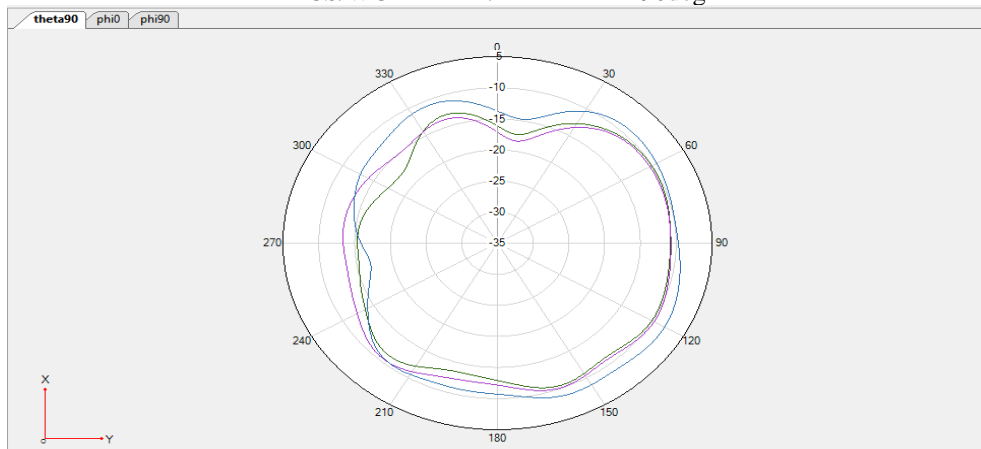
LTE B1/B4/B66/N1/N66 Theta=90deg



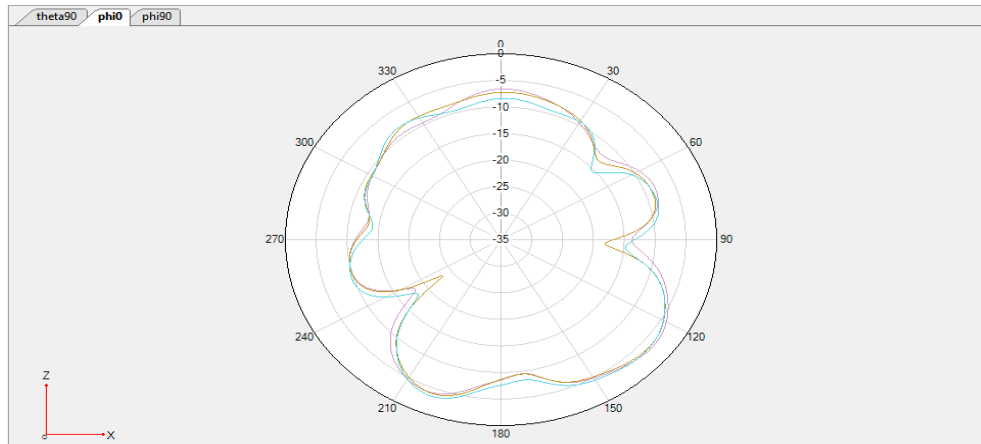
PCS/WCDMA B2/LTE B2 $\Phi = 0^\circ$



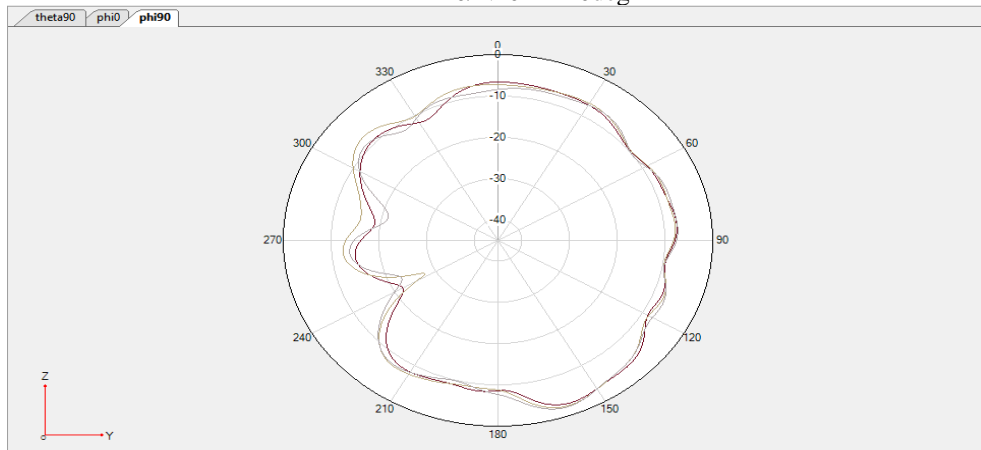
PCS/WCDMA B2/LTE B2 $\Phi = 90^\circ$



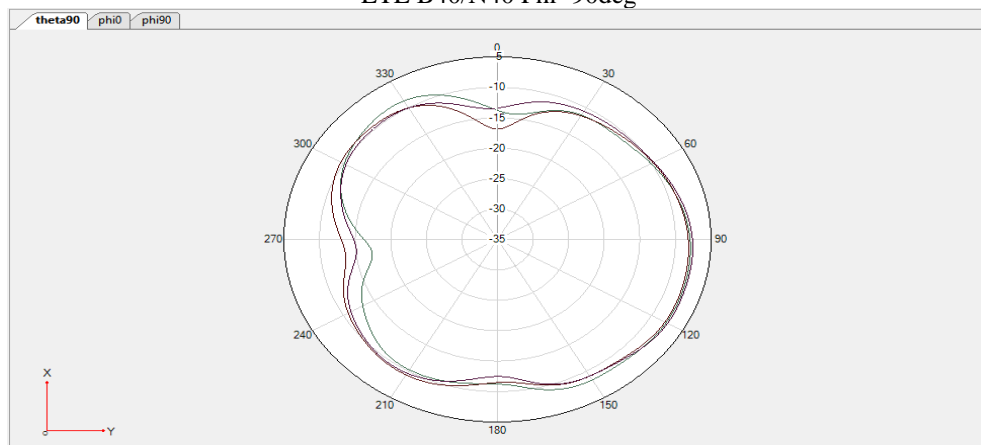
PCS/WCDMA B2/LTE B2 $\Theta = 90^\circ$



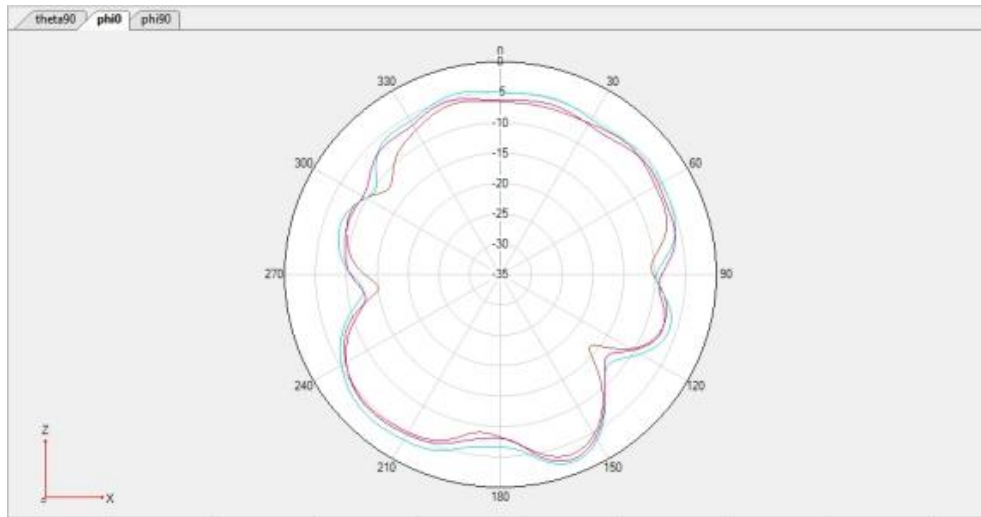
LTE B40/N40 Phi=0deg



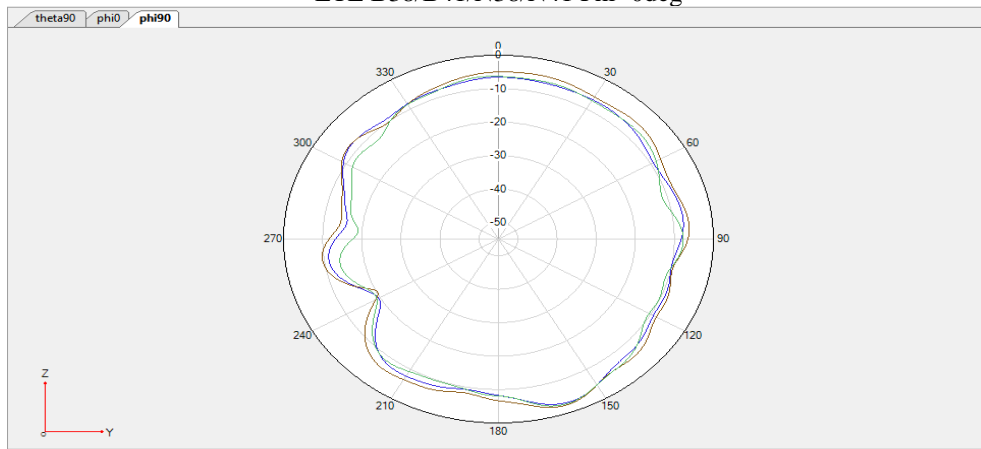
LTE B40/N40 Phi=90deg



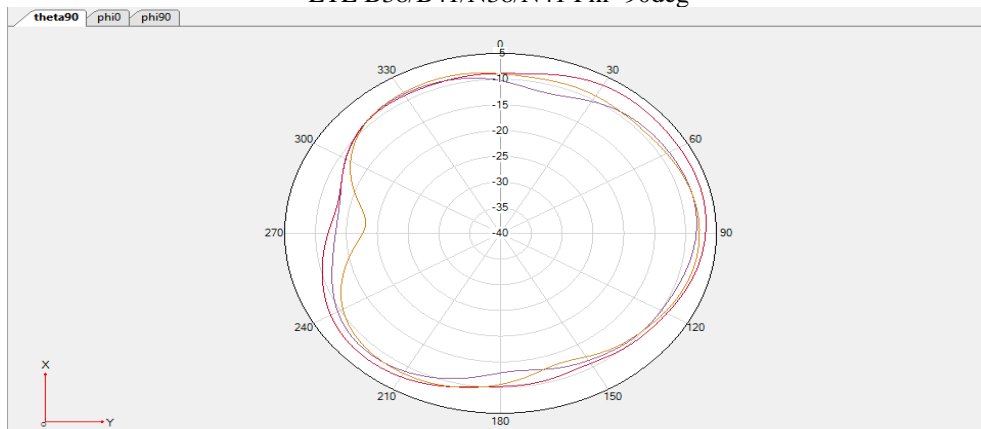
LTE B40/N40 Theta=90deg



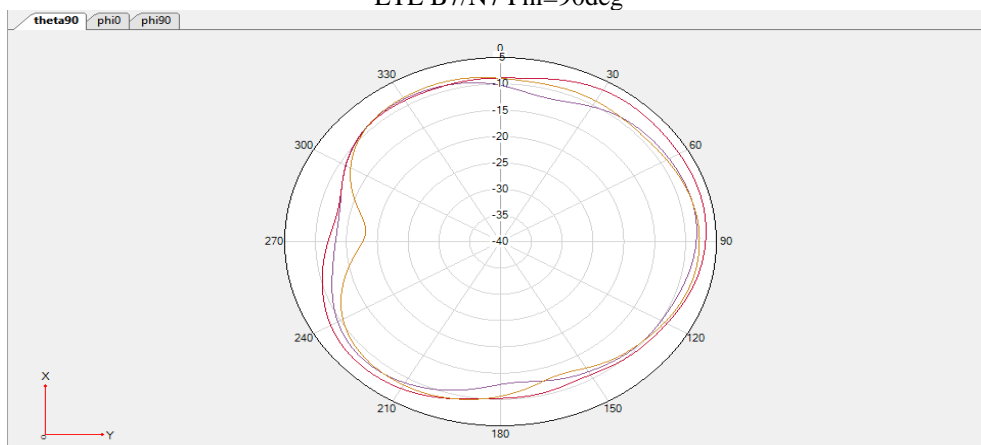
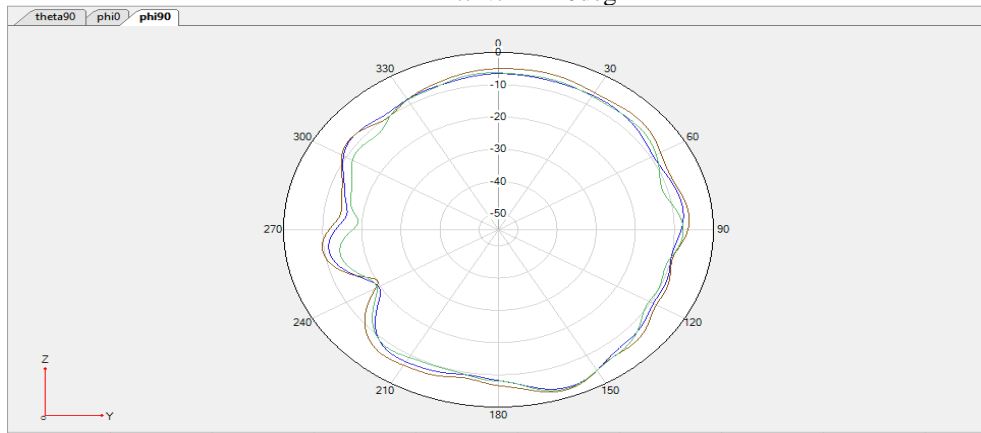
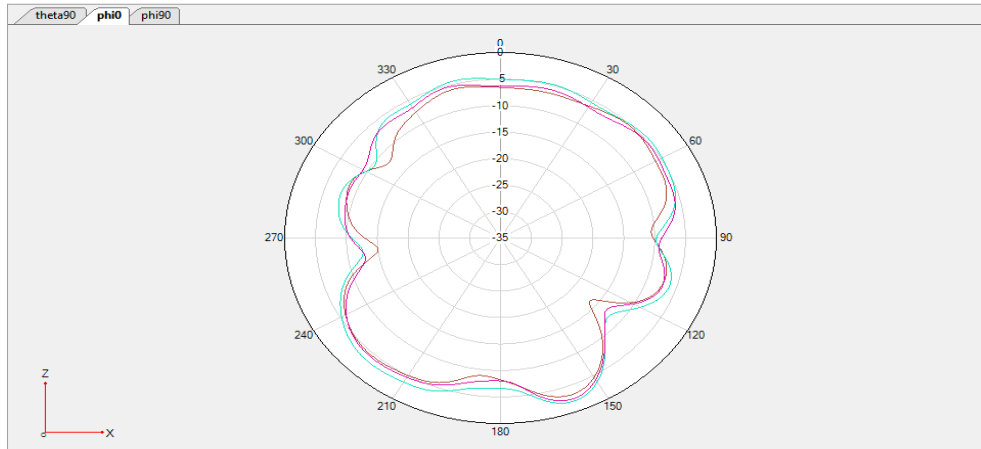
LTE B38/B41/N38/N41 Phi=0deg



LTE B38/B41/N38/N41 Phi=90deg

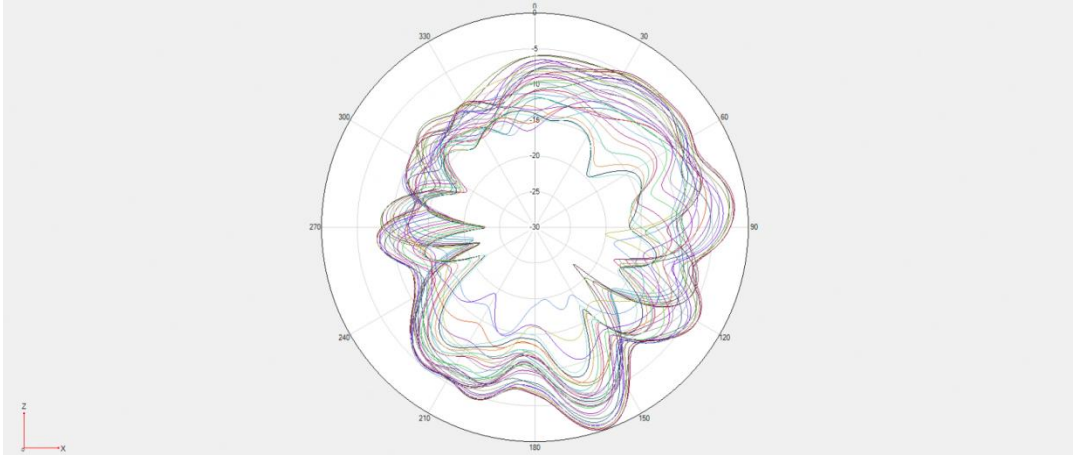


LTE B38/B41/N38/N41 Theta=90deg

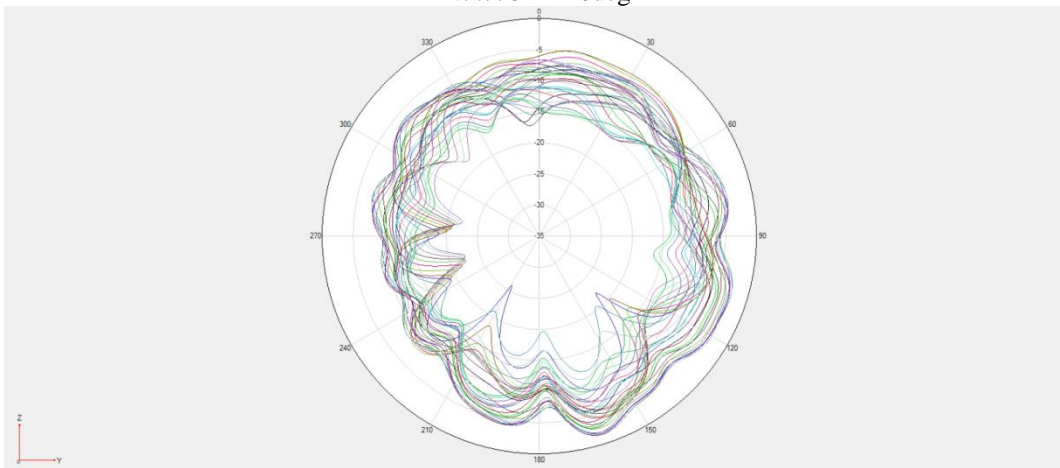


※ Antenna Gain

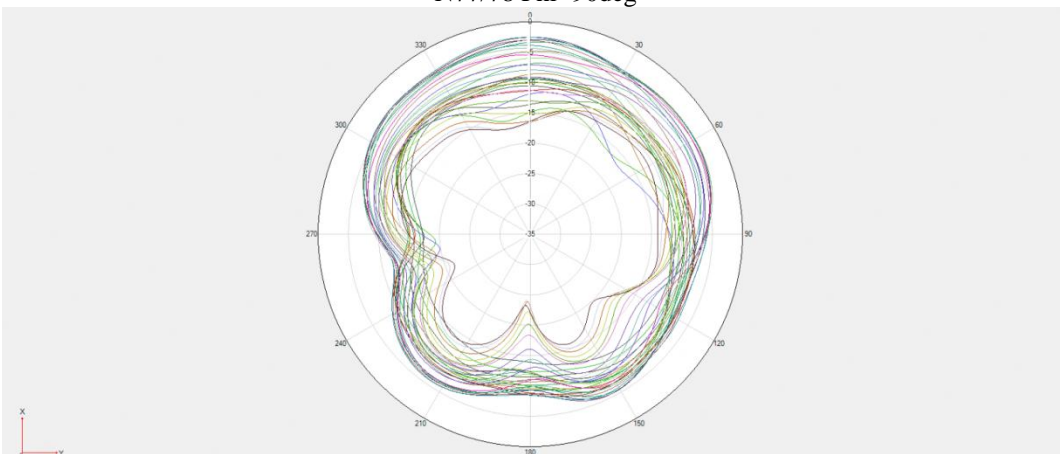
ANT5



N77/78 Phi=0deg



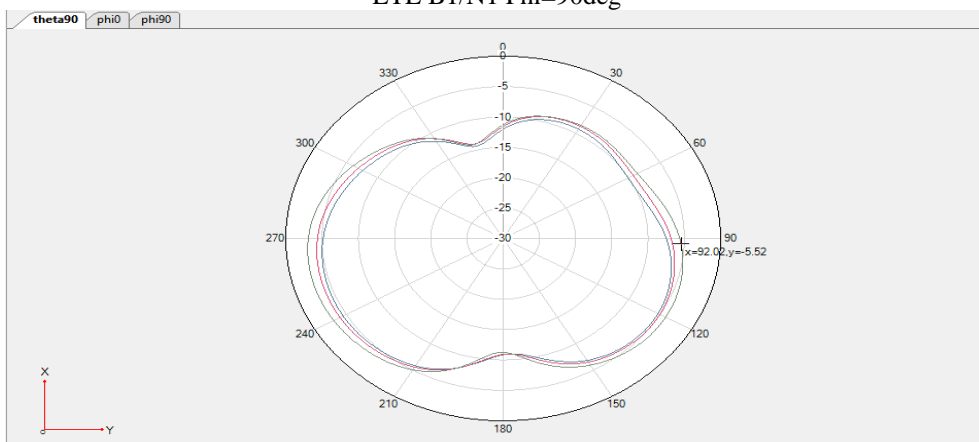
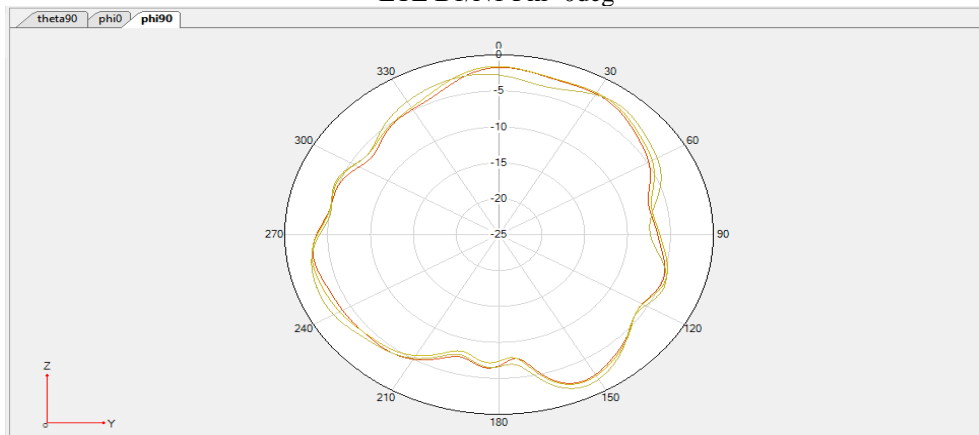
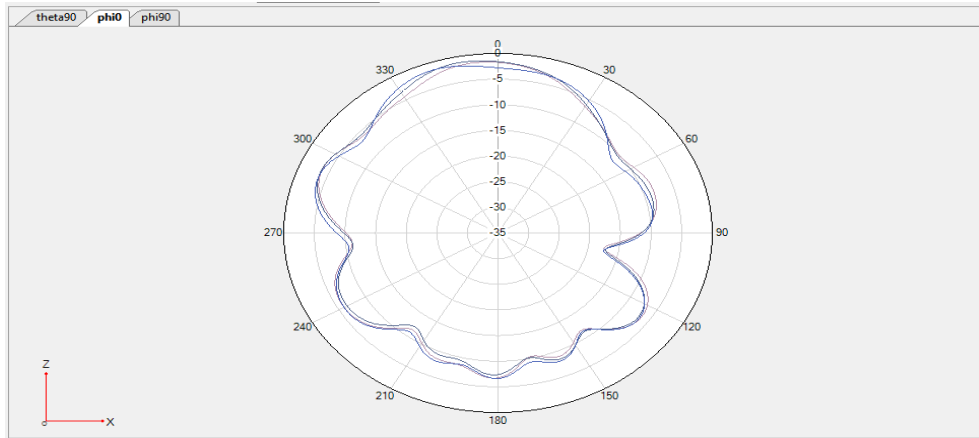
N77/78 Phi=90deg

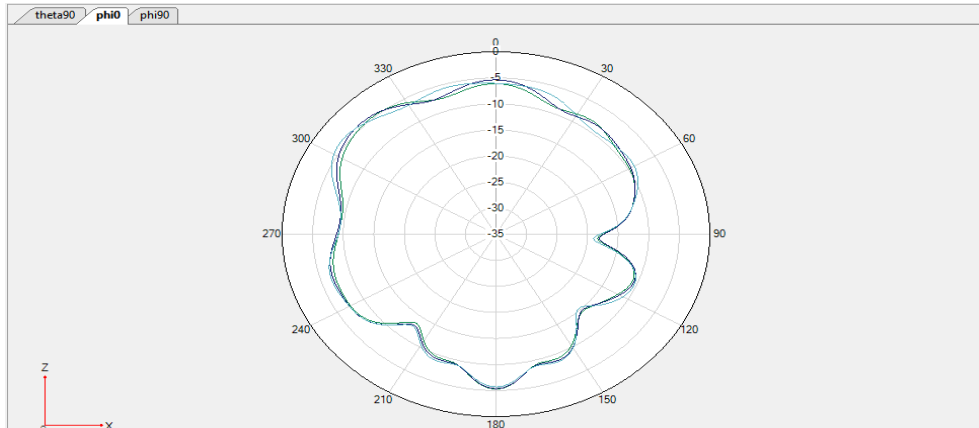


N77/78 Theta=90deg

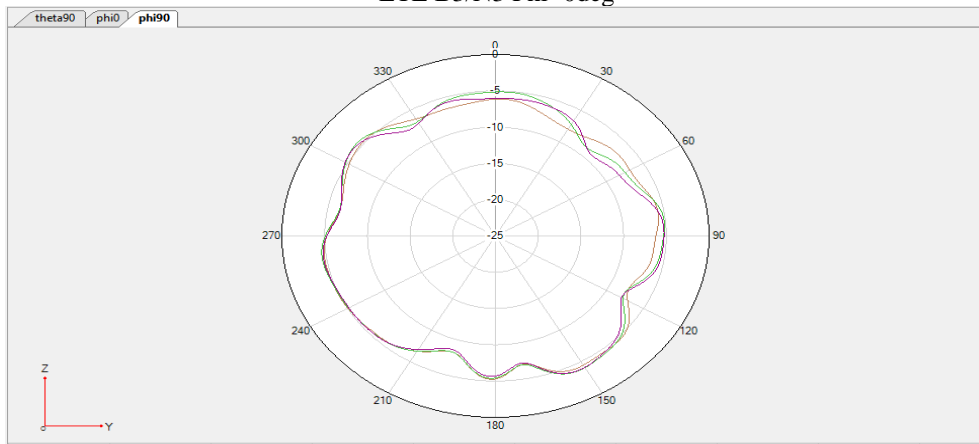
※ Antenna Gain

ANT6

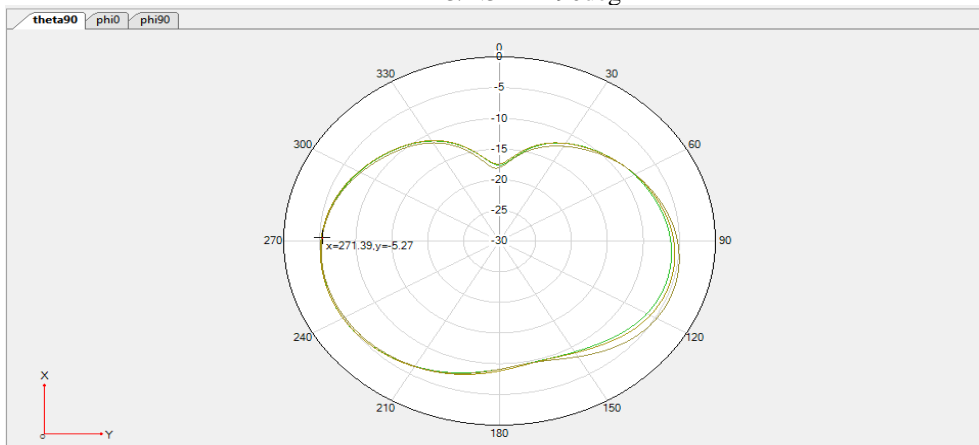




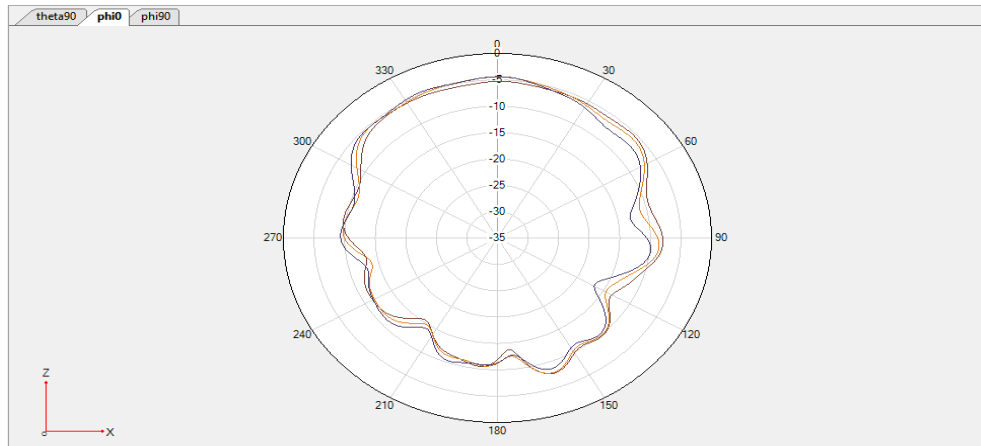
LTE B3/N3 Phi=0deg



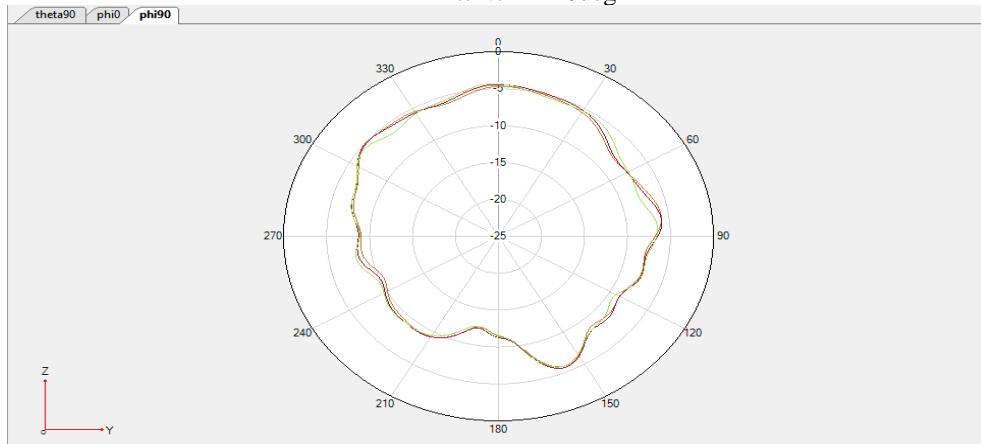
LTE B3/N3 Phi=90deg



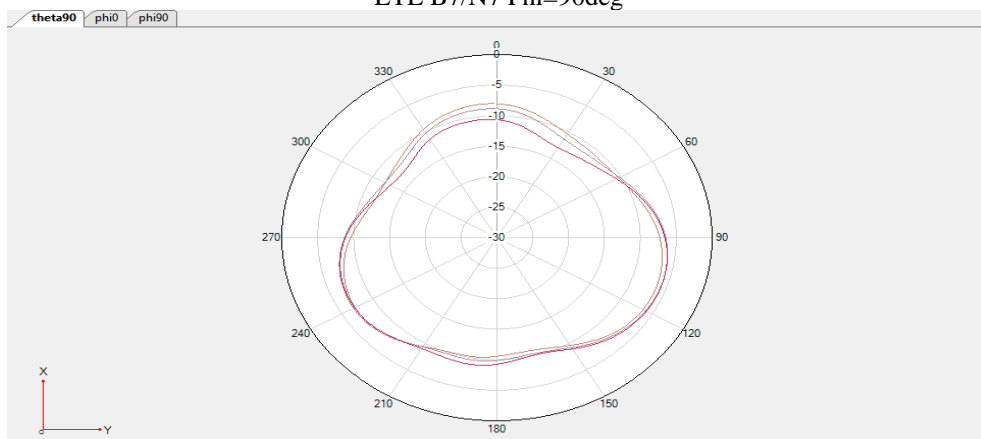
LTE B3/N3 Theta=90deg



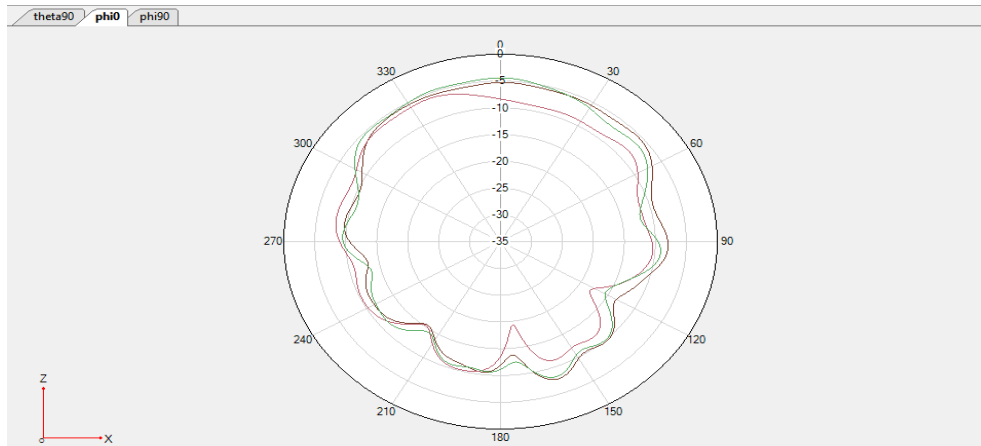
LTE B7/N7 $\Phi=0^\circ$



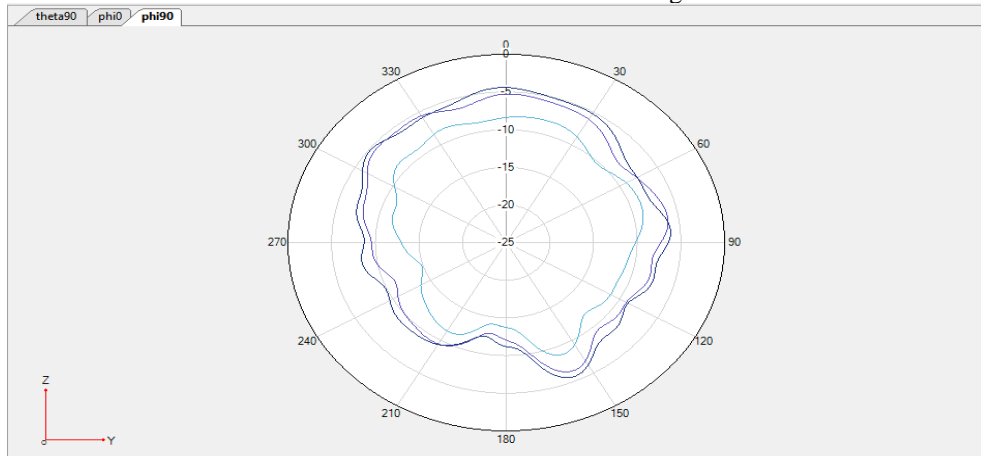
LTE B7/N7 $\Phi=90^\circ$



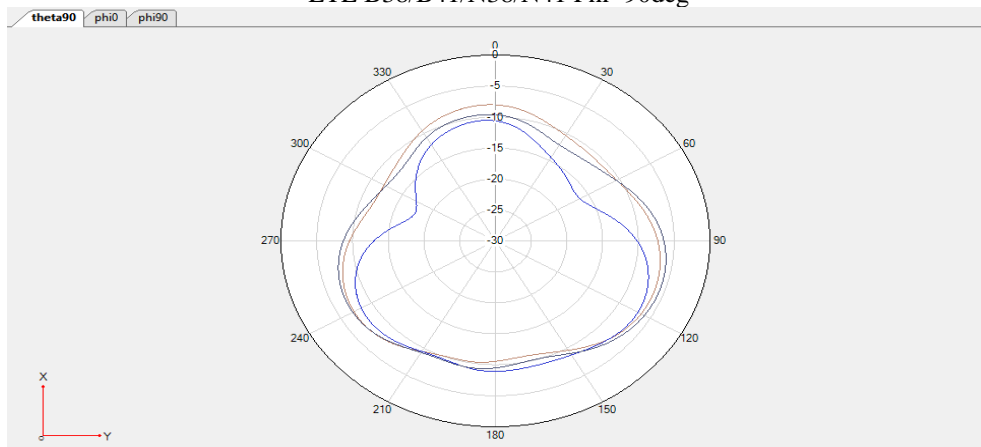
LTE B7/N7 $\Theta=90^\circ$



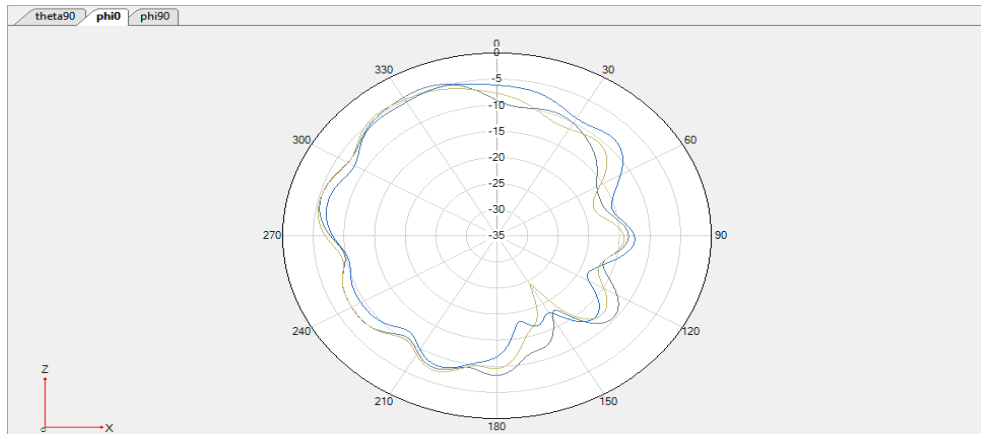
LTE B38/B41/N38/N41 Phi=0deg



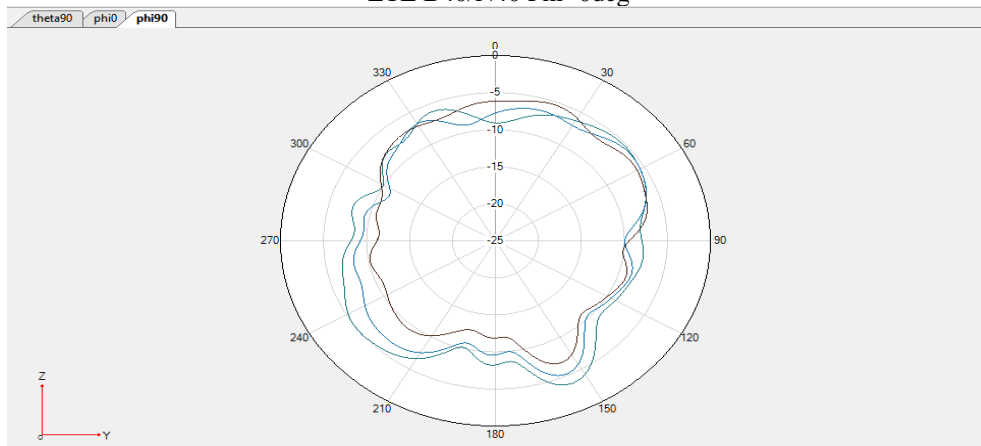
LTE B38/B41/N38/N41 Phi=90deg



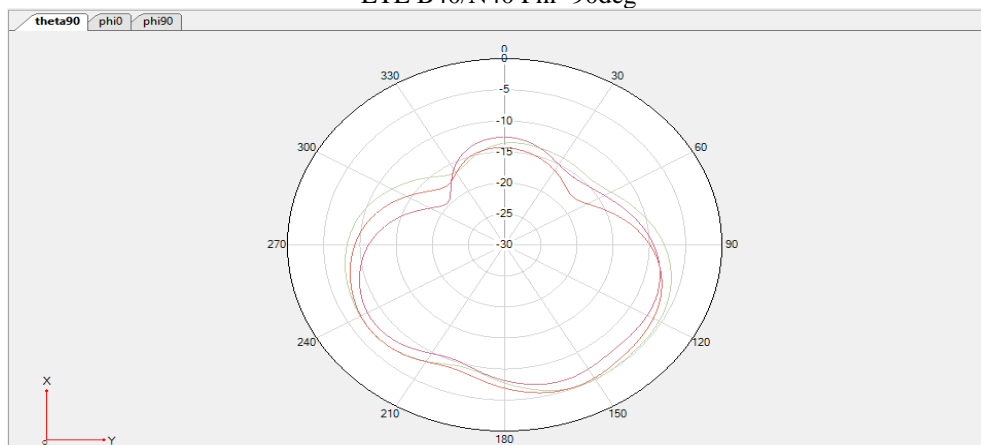
LTE B38/B41/N38/N41 Theta=90deg



LTE B40/N40 $\Phi=0^\circ$



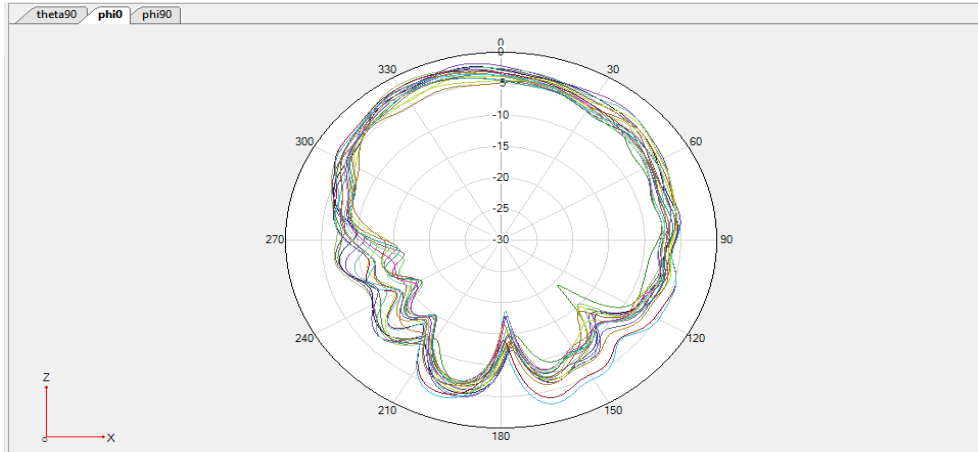
LTE B40/N40 $\Phi=90^\circ$



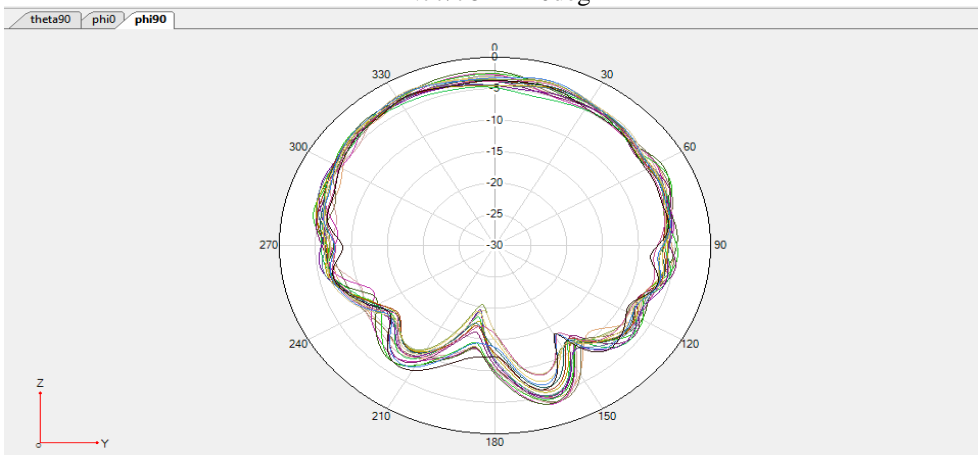
LTE B40/N40 $\Theta=90^\circ$

※ Antenna Gain

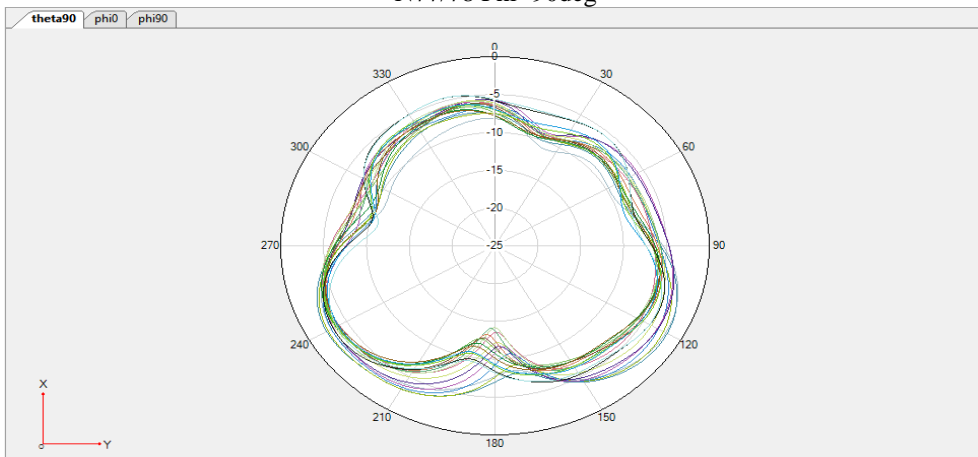
ANT7



N77/78 $\Phi=0^\circ$



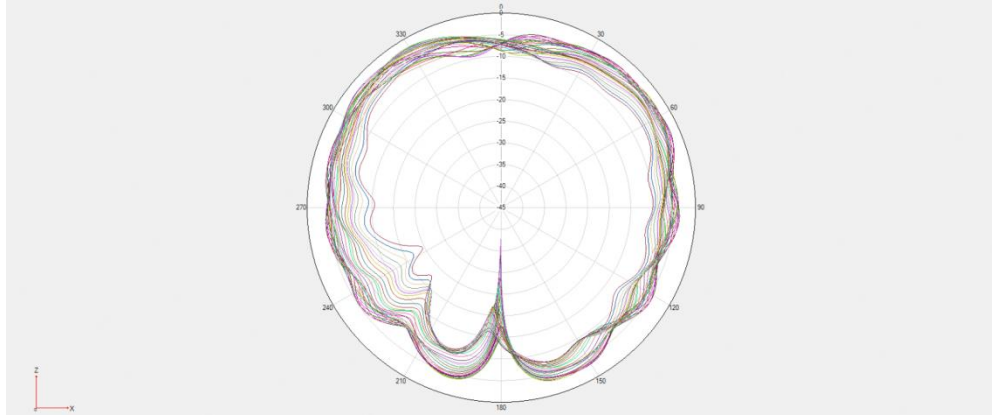
N77/78 $\Phi=90^\circ$



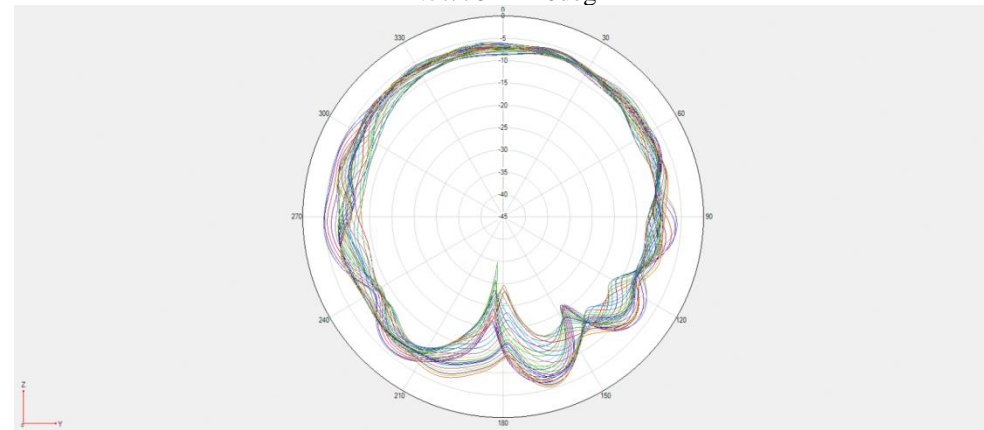
N77/78 $\Theta=90^\circ$

※ Antenna Gain

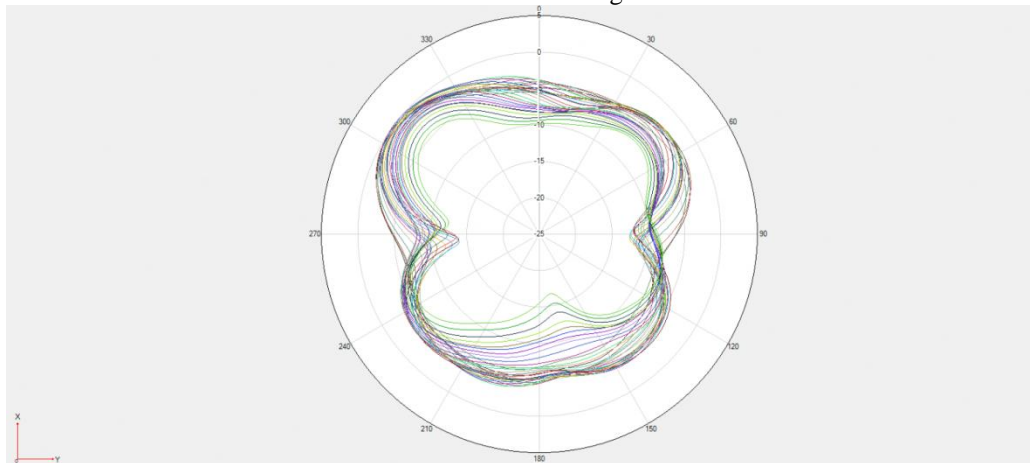
ANT8



N77/78 $\Phi=0^\circ$

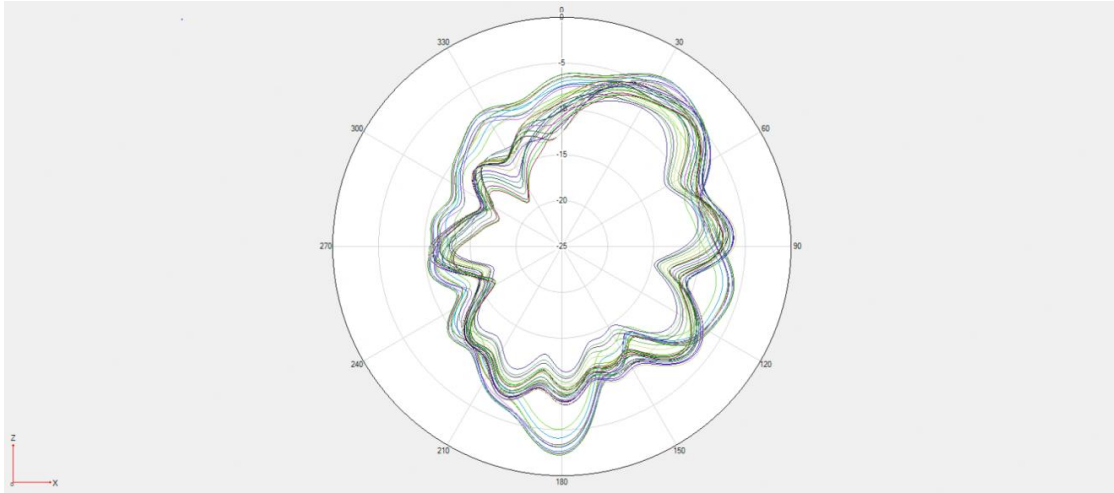


N77/78 $\Phi=90^\circ$

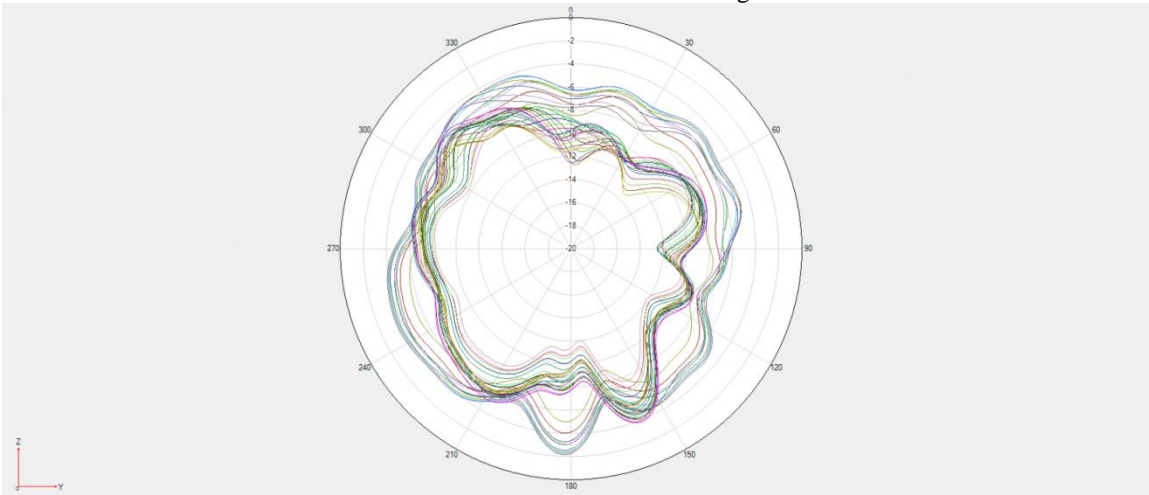


N77/78 $\Theta=90^\circ$

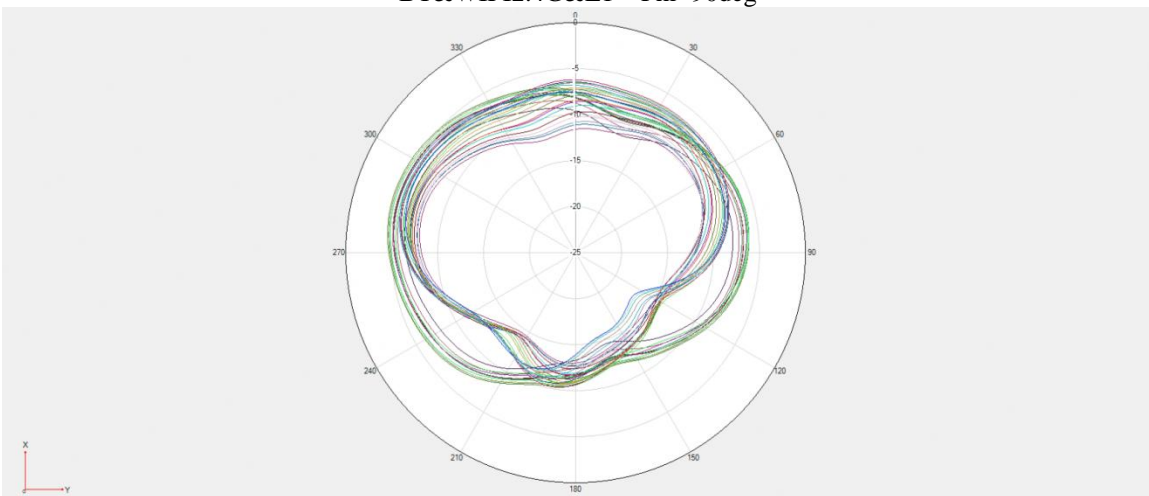
※ Antenna Gain
ANT12



BT&WIFI2.4G&L1 $\Phi = 0^\circ$

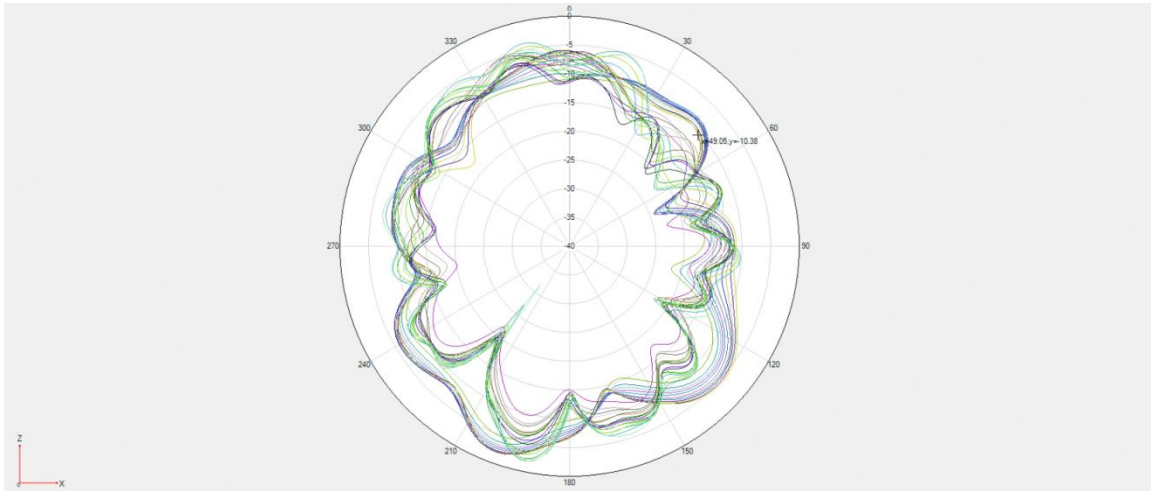


BT&WIFI2.4G&L1 $\Phi = 90^\circ$

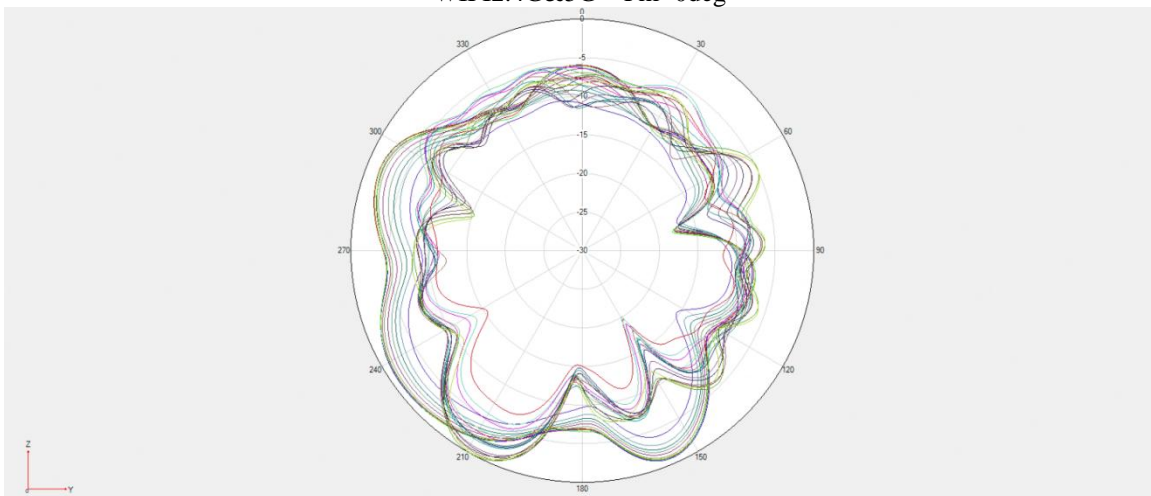


BT&WIFI2.4G&L1 $\Theta = 90^\circ$

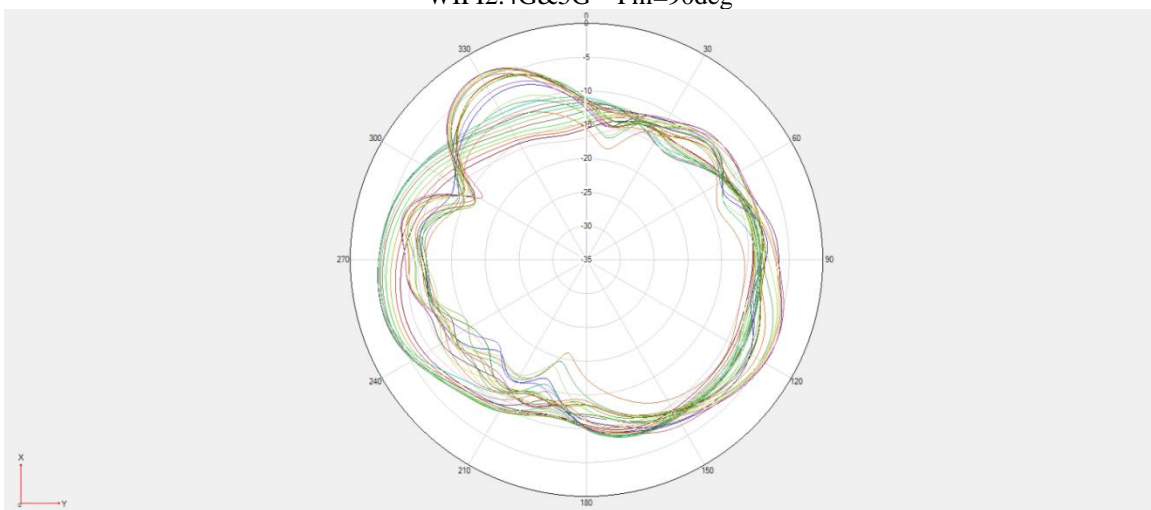
※ Antenna Gain
ANT13



WIFI2.4G&5G Phi=0deg

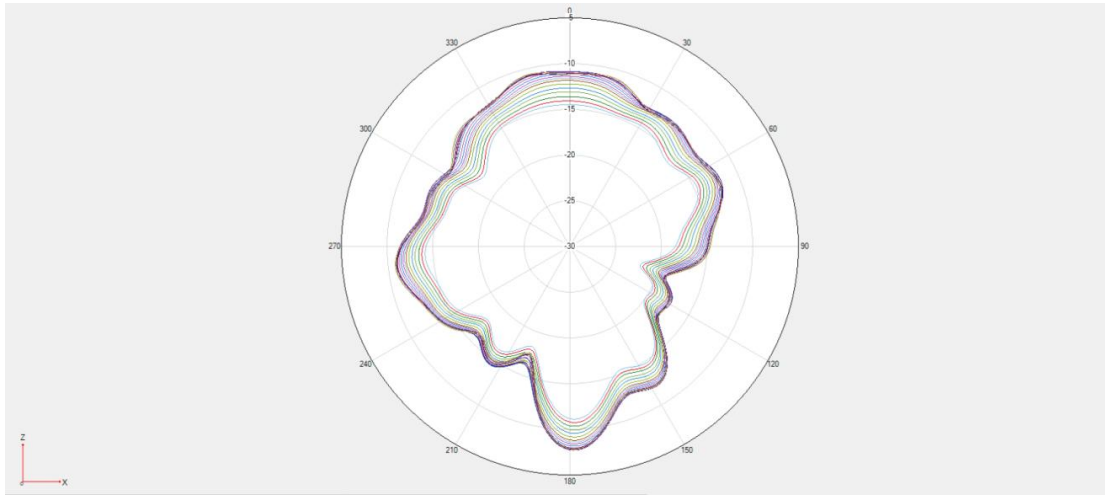


WIFI2.4G&5G Phi=90deg

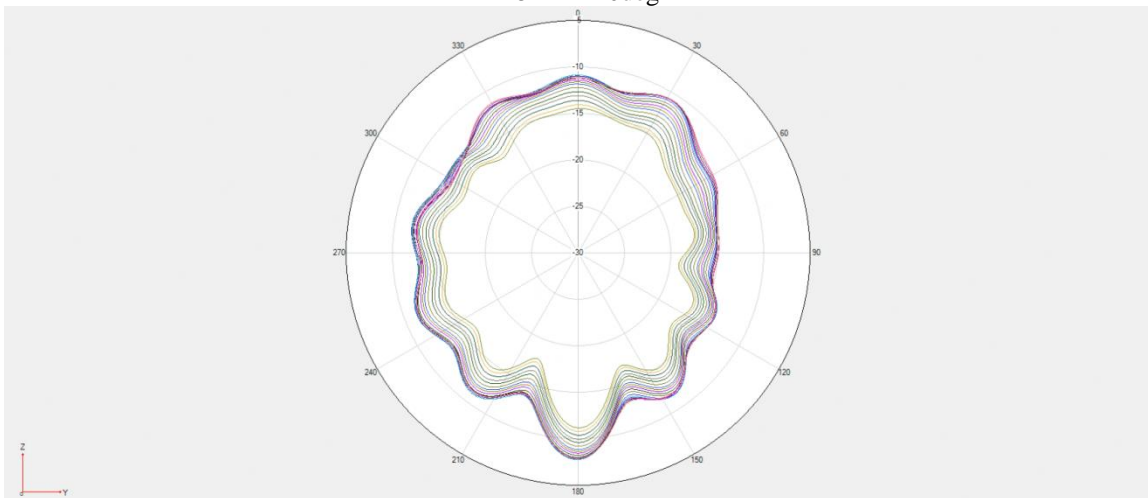


WIFI2.4G&5G Theta=90deg

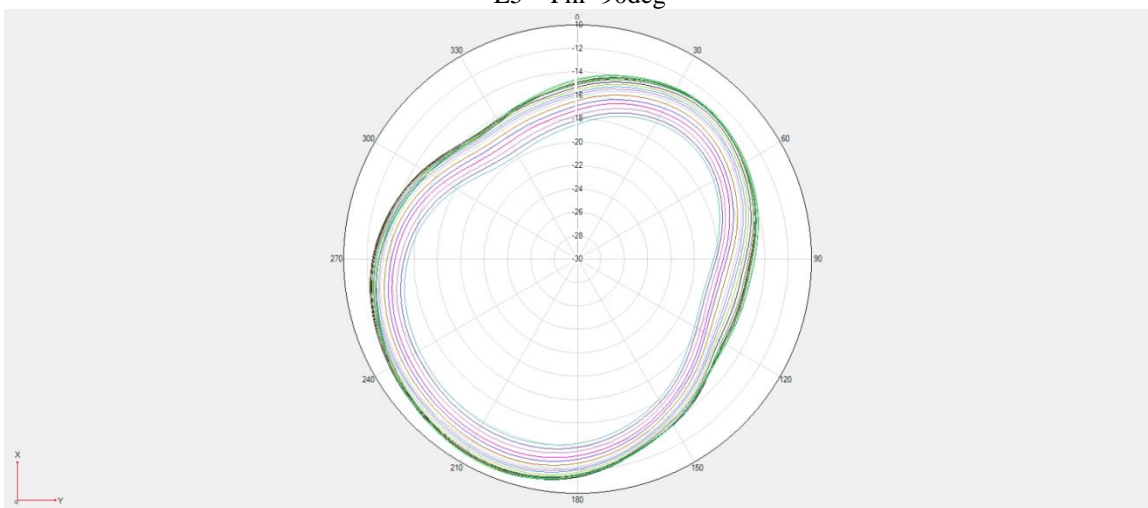
※ Antenna Gain
ANT14



L5 Phi=0deg



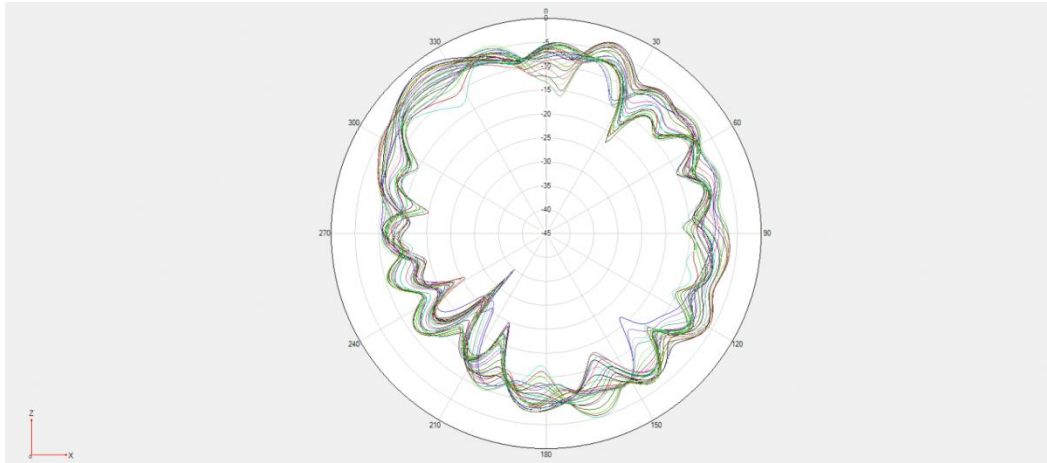
L5 Phi=90deg



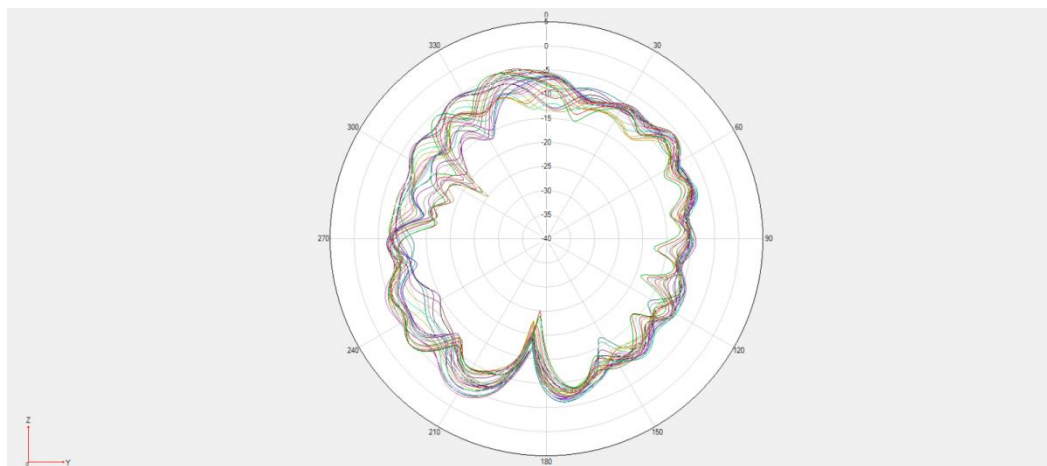
L5 Theta=90deg

※ Antenna Gain

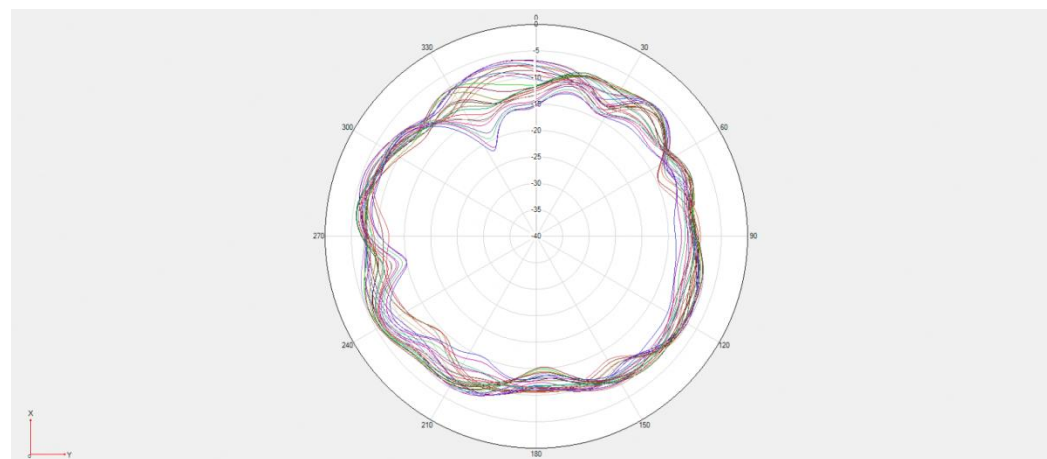
ANT15



WIFI 5G $\Phi=0^\circ$



WIFI 5G $\Phi=90^\circ$



WIFI 5G $\Theta=90^\circ$

Antenna Location:

