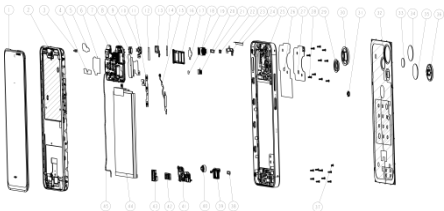


**Infinix X6835B**  
**User Manual (M)**

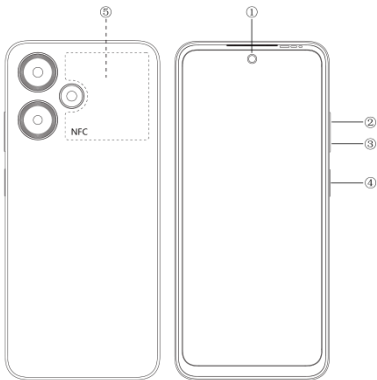
# Explosion diagram specification



1	FL(CTP+LCM)	2	F HSG ASM
3	PS RUBBER	4	PCBA COPPER C
5	PCBA COPPER A	6	PCBA COPPER B
7	PCBA MB	8	PCBA GRAPHITE FILM
9	F CAM FRAME	10	F CAM
11	FPC SIDE KEY	12	F CAM COPPER
13	REC	14	REC COPPER
15	FM	16	CARD HOLDER
17	R CAM CON FOAM 16M	18	R CAM 16M
19	R CAM CON FABRIC 8W	20	R CAM 8W
21	LCM CONN RUBBER	22	BAT CONN RUBBER
23	MAIN WATERPROOF FRAME	24	MAIN WATERPROOF MYLAR
25	MI HOUSING	26	MI RAD GRA
27	NFC	28	SCREW L3.5
29	R FLASH DECO	30	R CAM DECO 16M
31	R CAM RUBBER 8W	32	BAT COVER ASM
33	R FLASH LENS	34	R CAM LENS 16M
35	R CAM LENS 8W	36	R CAM DECO 8W
37	SCREW L2.0	38	SUB CONN RUBBER
39	SPK	40	MOTOR LINEA
41	PCBA SUB	42	USB RUBBER

43	EARPHONE RUBBER	44	BAT
45	COAXIAL CABLE		

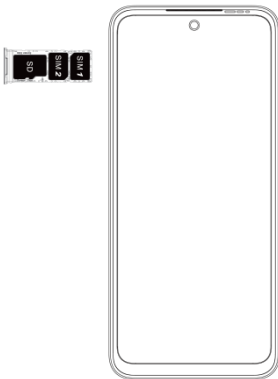
# Know your phone



1. Front camera
2. Volume + key
3. Volume - key
4. Power key & side fingerprint sensor
5. NFC

# SIM/SD card installation

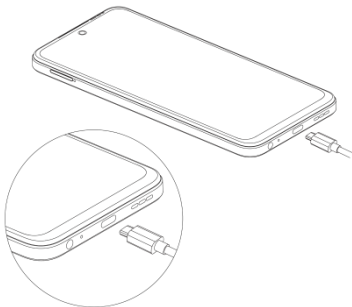
1. Power off mobile.
2. Refer to the following picture for SIM / SD card installation.



# Charging the phone

You can charge your device using a charger or by connecting it to the computer using a USB cable (comes with the phone).

Use only INFINIX charger and cables. Other chargers or cables may damage the device. This will invalidate your phone warranty.



# FCC Caution

## **Labelling requirements.**

This device complies with Part 15 of the FCC Rules. Operation is subject to the following two conditions:

- (1) This device may not cause harmful interference.
- (2) This device must accept any interference received, including interference that may cause undesired operation.

## **Information to user.**

Any changes or modifications not expressly approved by the party responsible for compliance could void the user's authority to operate the equipment.

## **Information to the user.**

Note: This equipment has been tested and found to comply with the limits for a Class B digital device, pursuant to part 15 of the FCC Rules. These limits are designed to provide reasonable protection against harmful interference in a residential installation. This equipment generates uses and can radiate radio frequency energy and, if not installed and used in accordance with the instructions, may cause harmful interference to radio communications. However, there is no guarantee that interference will not occur in a particular installation. If this equipment does cause harmful interference to radio or television reception, which can be determined by turning the equipment off and on, the user is encouraged to try to correct the interference by one or more of the following measures:

- Reorient or relocate the receiving antenna.
- Increase the separation between the equipment and receiver.
- Connect the equipment into an outlet on a circuit different from that to which the receiver is connected.
- Consult the dealer or an experienced radio/TV technician for help.

## **Specific Absorption Rate (SAR) information:**

This mobile phone meets the government's requirements for

exposure to radio waves. The guidelines are based on standards that were developed by independent scientific organizations through periodic and thorough evaluation of scientific studies. The standards include a substantial safety margin designed to assure the safety of all persons regardless of age or health.

FCC RF Exposure Information and Statement The SAR limit of USA (FCC) is 1.6 W/kg averaged over one gram of tissue. Device types: X6835B (FCC ID:2AIZN-X6835B) has also been tested against this SAR limit. The highest SAR value reported under this standard during product certification for use at the ear is 1.20W/kg and when properly worn on the body is 0.67W/kg.

### **Body-worn Operation**

This device was tested for typical body-worn operations. To comply with RF exposure requirements, a minimum separation distance of 1.0 cm must be maintained between the user's body and the handset, including the antenna. Third-party belt-clips, holsters, and similar accessories used by this device should not contain any metallic components. Body-worn accessories that do not meet these requirements may not comply with RF exposure requirements and should be avoided. Use only the supplied or an approved antenna.



For DTS patents, see <http://patents.dts.com>. Manufactured under license from DTS Licensing Limited. DTS, the Symbol, & DTS and the Symbol together are registered trademarks or trademarks of DTS, Inc. in the United States and/or other countries. © DTS, Inc. All Rights Reserved.



Operating System: Android™  
Android is a trademark of Google LLC.