

## Feature

- ※ High gain
- ※ Omani-directional
- ※ Wide bandwidth

Main Antenna

## Application

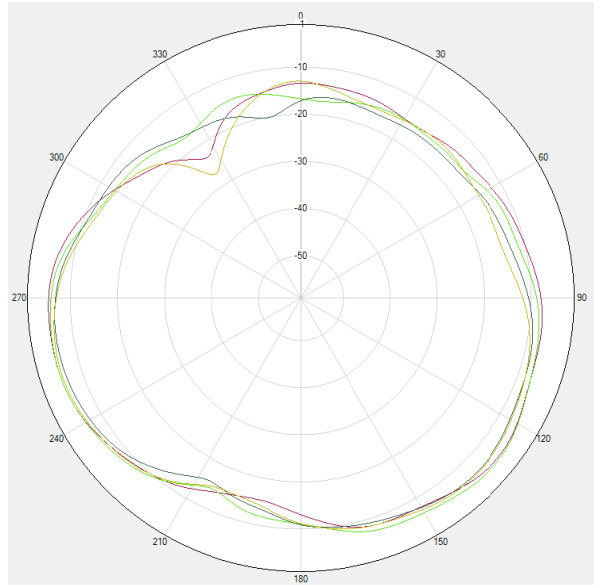
- ※ GSM850/900/DCS/PCS/WCDMAB1/B2/B4/B5/B8  
 LTE B1/B2/B3/B4/B5/B7/B8/B20/B28/B38/B40/B41  
 communication applications

Product	Name and address of the antenna manufacturer	Model number of the antenna
<b>X6835B</b>	Name: 尚远科技通讯科技有限公司 <b>Sunnyway</b> Address: 上海市青浦区高光路 215 弄 99 号 4 号楼 1 楼 Floor 1, Building 4, No. 99, Lane 215, Gaoguang Road, Qingpu District, Shanghai	SYC-X6835-ANT1-V0.2 SYC-X6835-ANT2-V0.2 SYC-X6835-ANT3-V0.2

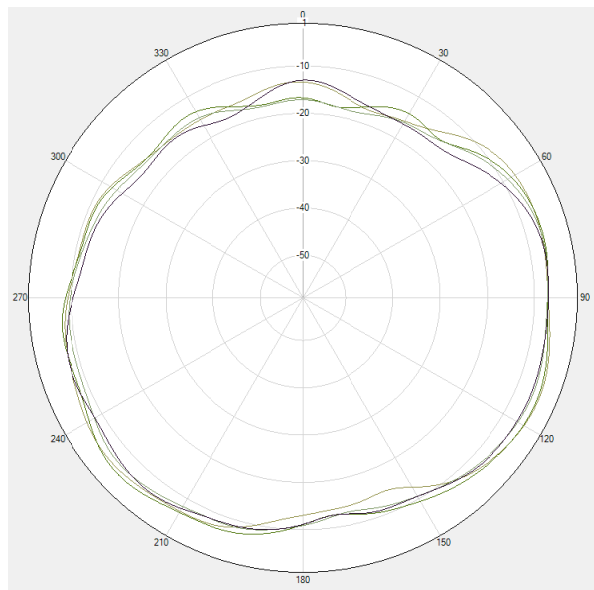
TYPE	
Transmitter Frequency	GSM 850/WCDMA B5/LTE B5: 824 – 849 MHz
	GSM 900/WCDMA B8/LTE B8: 880 – 915 MHz
	DCS /WCDMA B4/LTE B3/B4: 1710 – 1785 MHz
	PCS/WCDMA B2/LTE B2:1850-1910MHz
	WCDMA B1/LTE B1: 1920 – 1980MHz
	LTE B7:2496-2565MHz
	LTE B40:2300-2400MHz
	LTE B38/B41:2565-2645MHz
	LTE B20:832-862MHz
B28:700-748MHz	
Receiver Frequency	GSM 850/WCDMA B5/LTE B5: 869 – 894 MHz
	GSM 900/WCDMA B8/LTE B8: 925 – 960 MHz
	DCS/LTE B3: 1805 – 1880 MHz
	WCDMA 4/LTE B4: 2110-2155 MHz
	PCS/WCDMA B2/LTE B2:1930-1990MHz
	WCDMA B1/LTE B1: 2110 – 2170MHz
	LTE B7:2620-2690MHz
	LTE B40:2300-2400MHz
	LTE B38/41:2565-2645MHz
LTE B20:791-821MHz	
LTE B28:758-803MHz	
Main Antenna Gain (Peak Gain)	GSM 850/WCDMA B5/LTE B5/ B20: -4.8dBi
	GSM 900/WCDMA B8/LTE B8: -4.2dBi
	DCS/WCDMA B4/ LTE B3/B4/: -1.8dBi
	PCS/WCDMA B2/LTE B2: 1.7dBi
	WCDMA B1/LTE B1: 2.2dBi
	LTE B7/B38/B41: -0.5dBi
	LTE B40: -1.4dBi
LTE B28:-6.2dBi	
3in1 Antenna Gain (Peak Gain)	Bluetooth, 2.4G Wi-Fi:0.8dBi,5G Wi-Fi: 0.5dBi

※ Antenna Gain

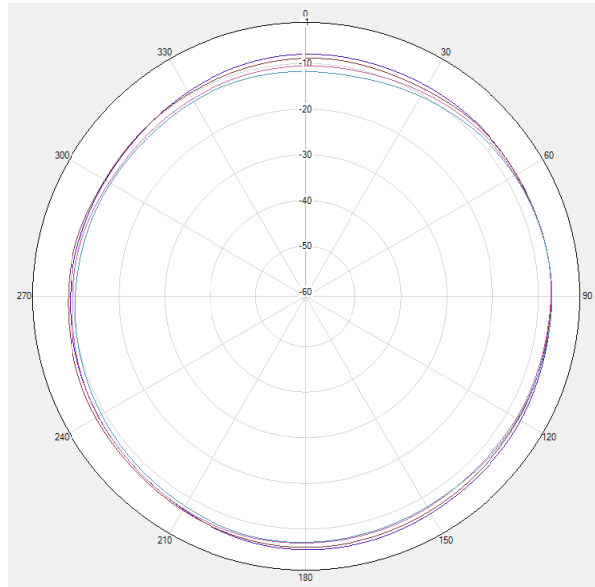
Main Antenna



GSM 850/WCDMA B5/LTE B5/ B20  $\Phi=0^\circ$



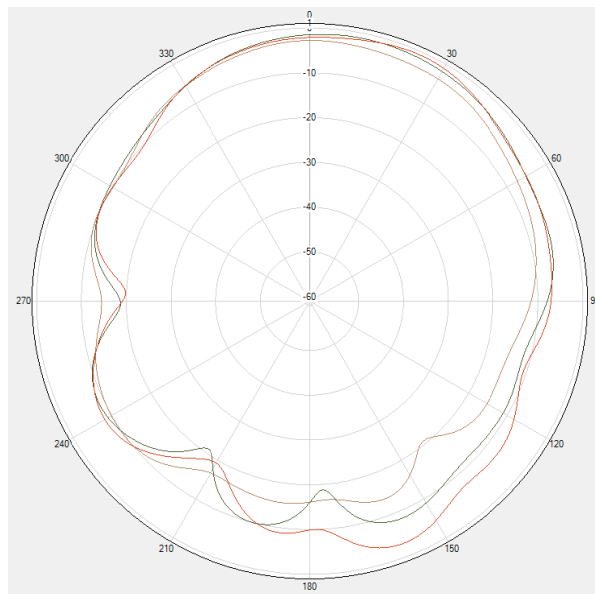
GSM 850/WCDMA B5/LTE B5/ B20  $\Phi=90^\circ$



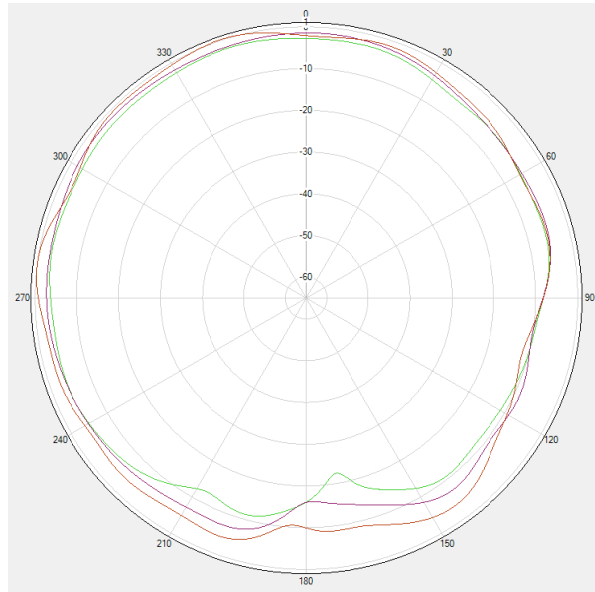
GSM 850/WCDMA B5/LTE B5/ B20 Theta=90deg

※ Antenna Gain

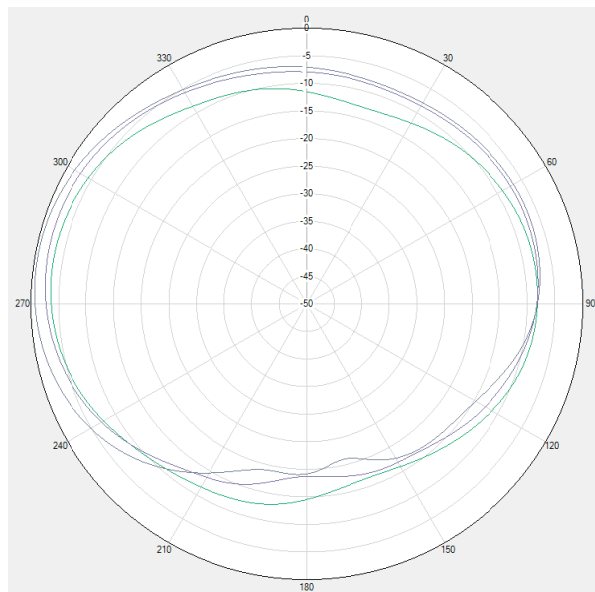
Main Antenna



LTE B40 Phi=0deg



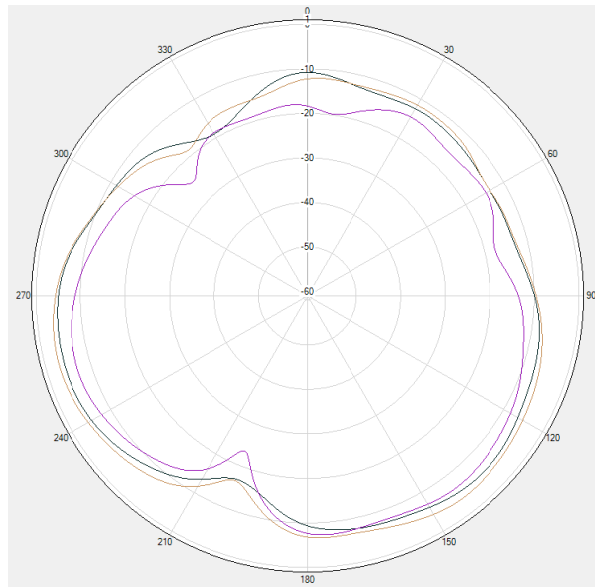
LTE B40 Phi=90deg



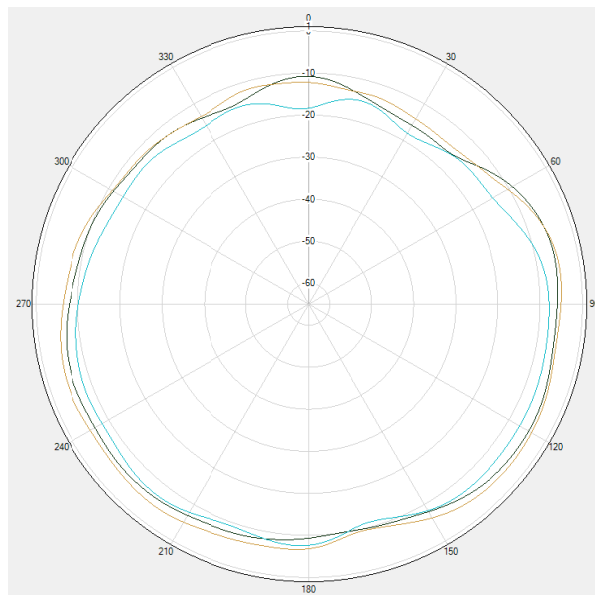
LTE B40 Theta=90deg

※ Antenna Gain

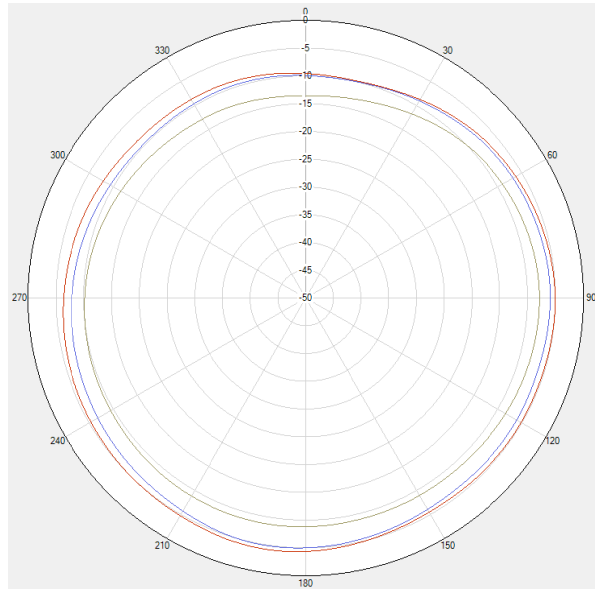
Main Antenna



GSM900 / WCDMA B8 / LTE B8  $\Phi=0^\circ$



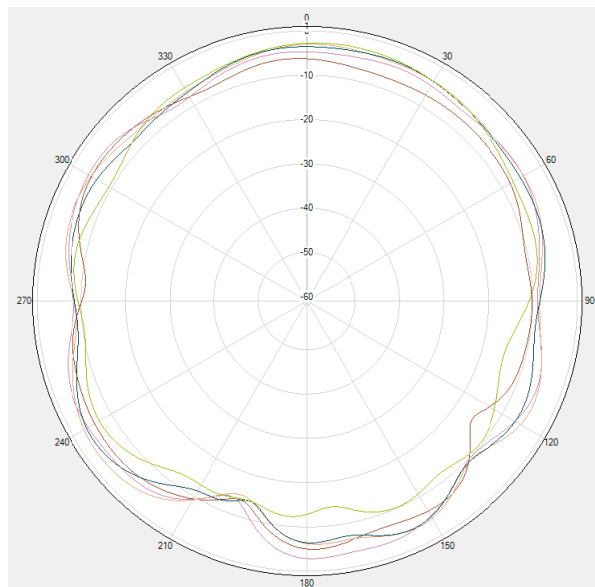
GSM900 / WCDMA B8 / LTE B8  $\Phi=90^\circ$



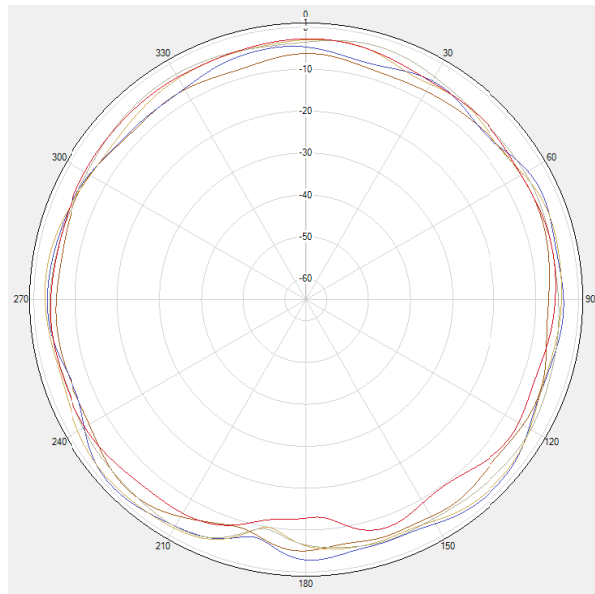
GSM900 / WCDMA B8 / LTE B8 Theta=90deg

※ Antenna Gain

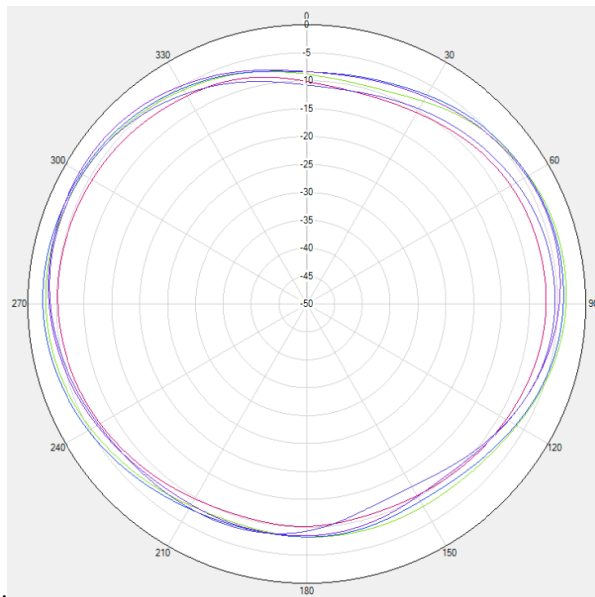
Main Antenna



DCS1800/PCS1900/WCDMA B1/B2/B4/LTE B1/B2/B3/B4 Phi=0deg



DCS1800/PCS1900/WCDMA B1/B2/B4/LTE B1/B2/B3/B4  $\Phi=90\text{deg}$

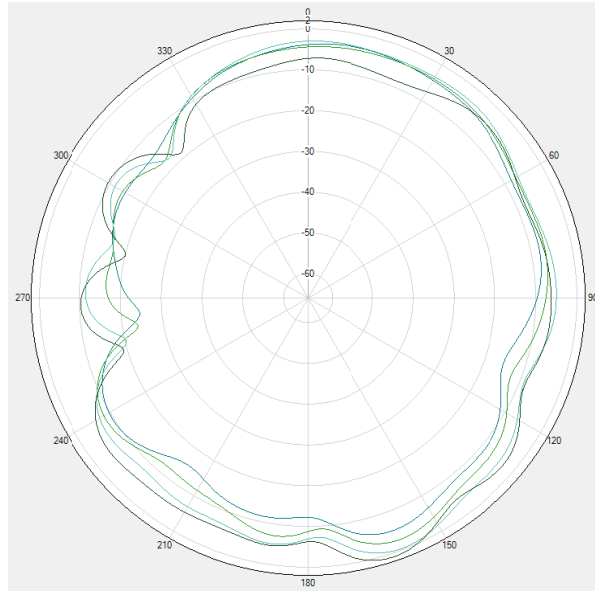


DCS1800/PCS1900/WCDMA B1/B2/B4/LTE B1/B2/B3/B4  $\Theta=90\text{deg}$

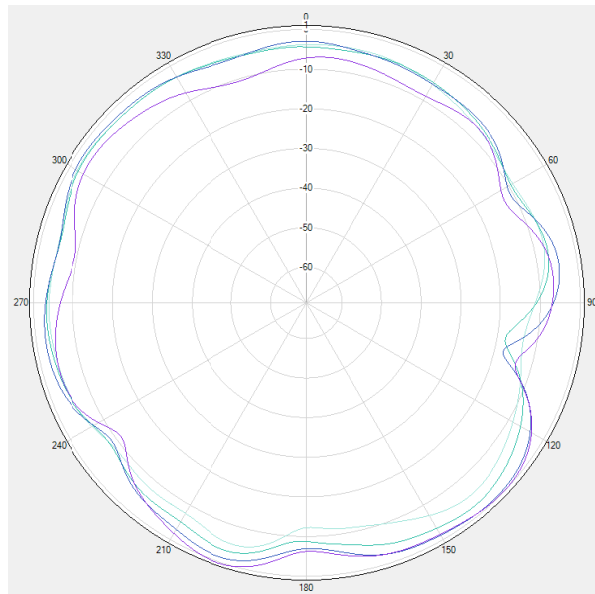


※ Antenna Gain

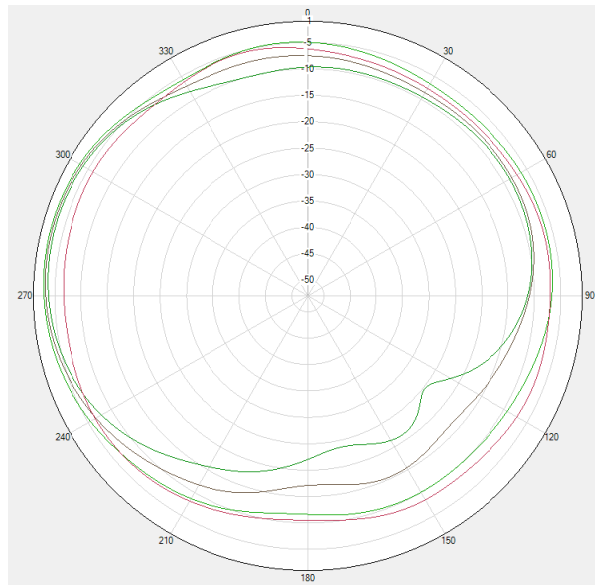
Main Antenna



LTE B7/B38/41  $\Phi=0^\circ$



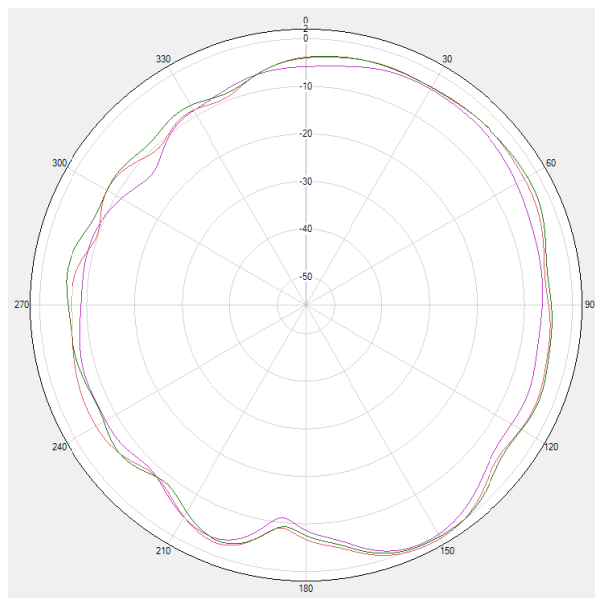
LTE B7/B38/41  $\Phi=90^\circ$



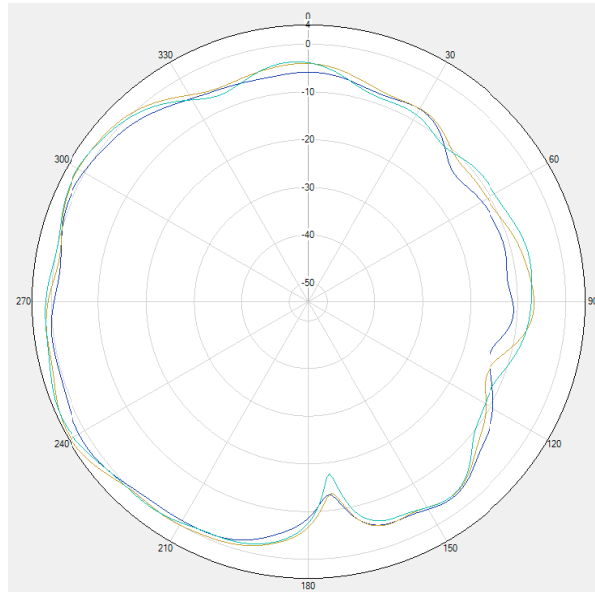
LTE B7/B38/41 Theta=90deg

※ Antenna Gain

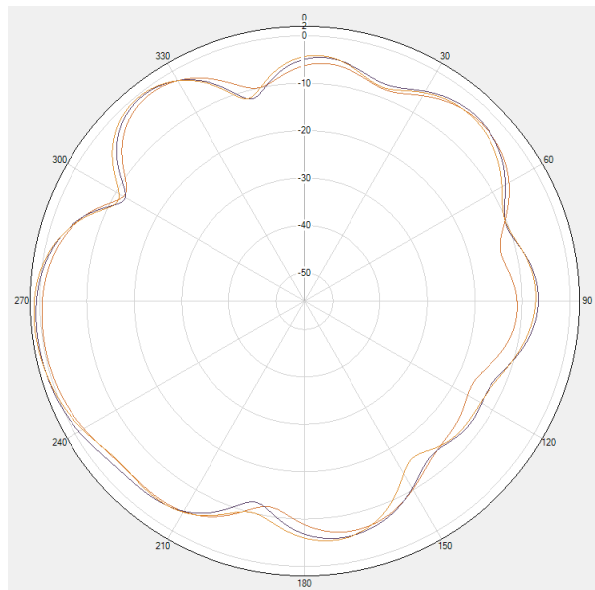
2.4G WIFI&BT Antenna



2.4G WIFI&BT Phi=0deg

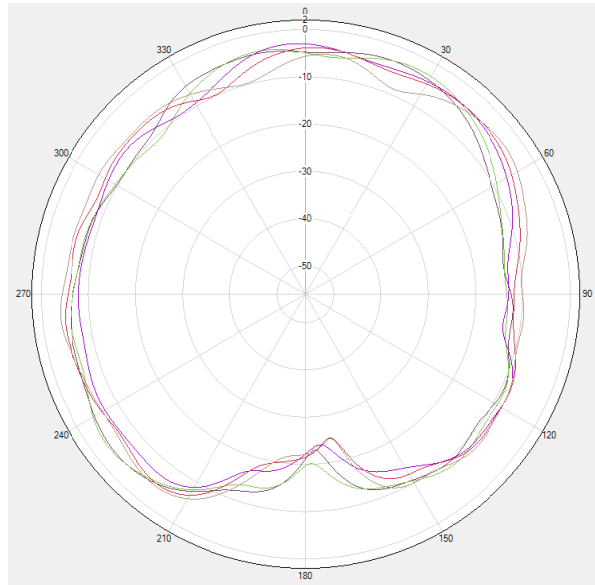


2.4G WIFI&BT  $\Phi=90^\circ$

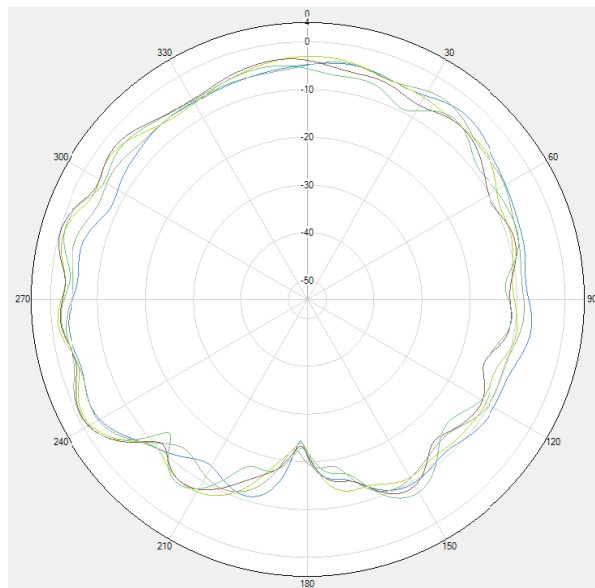


2.4G WIFI&BT  $\Theta=90^\circ$

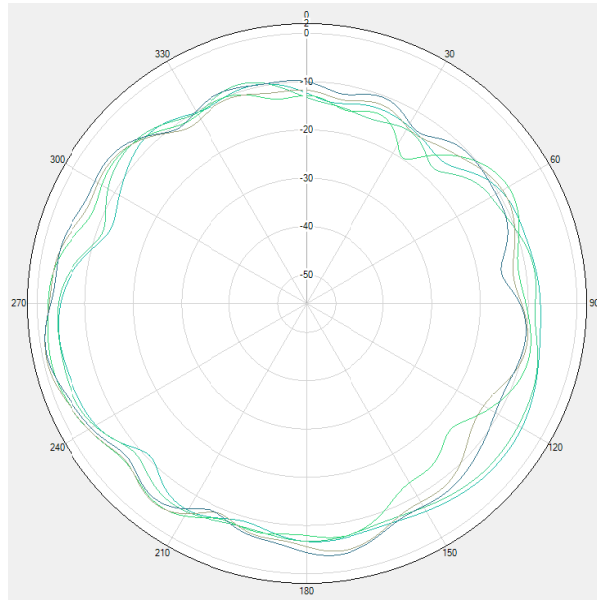
※ Antenna Gain  
5G WIFI Antenna



5G WIFI  $\Phi = 0^\circ$



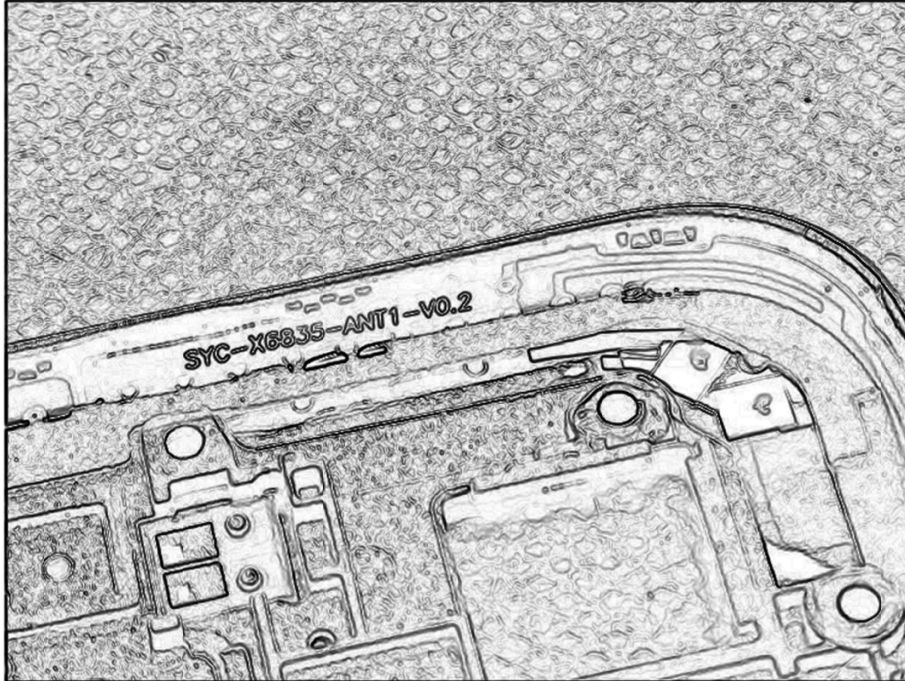
5G WIFI  $\Phi = 90^\circ$



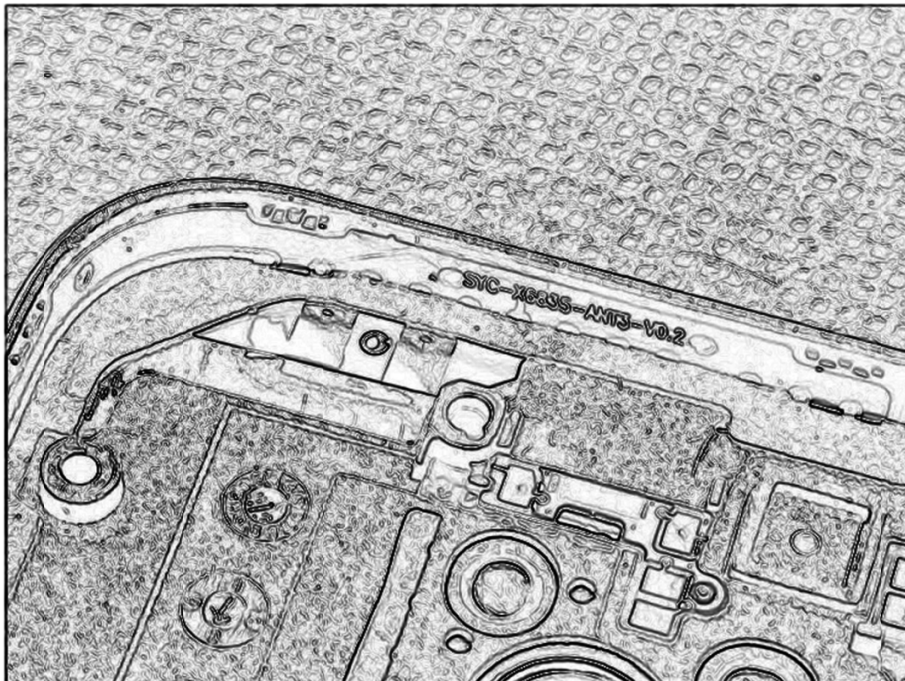
5G WIFI Theta=90deg

Antenna photo:

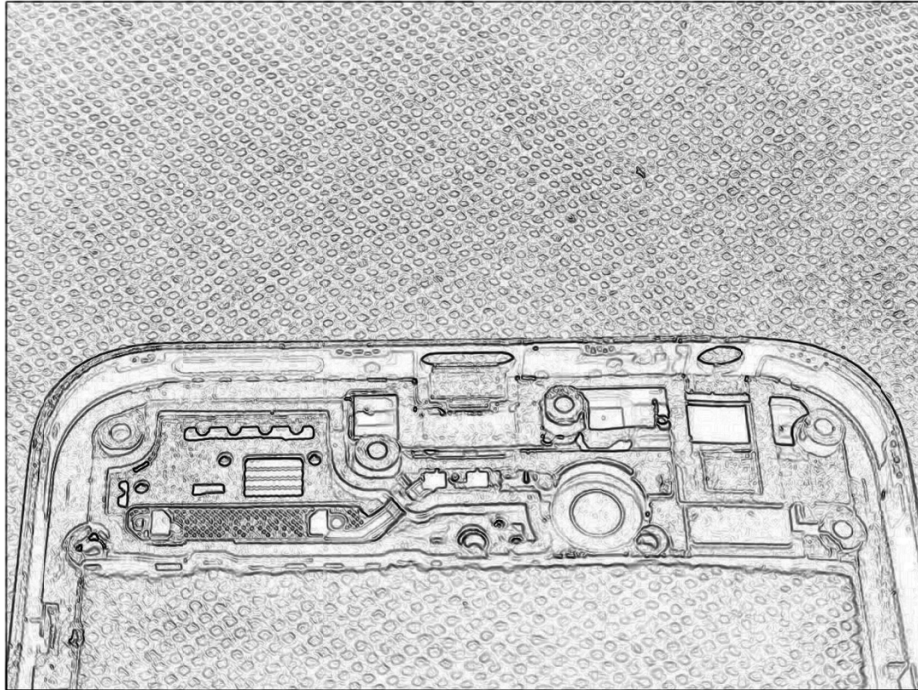
**WiFi/Bluetooth Antenna**



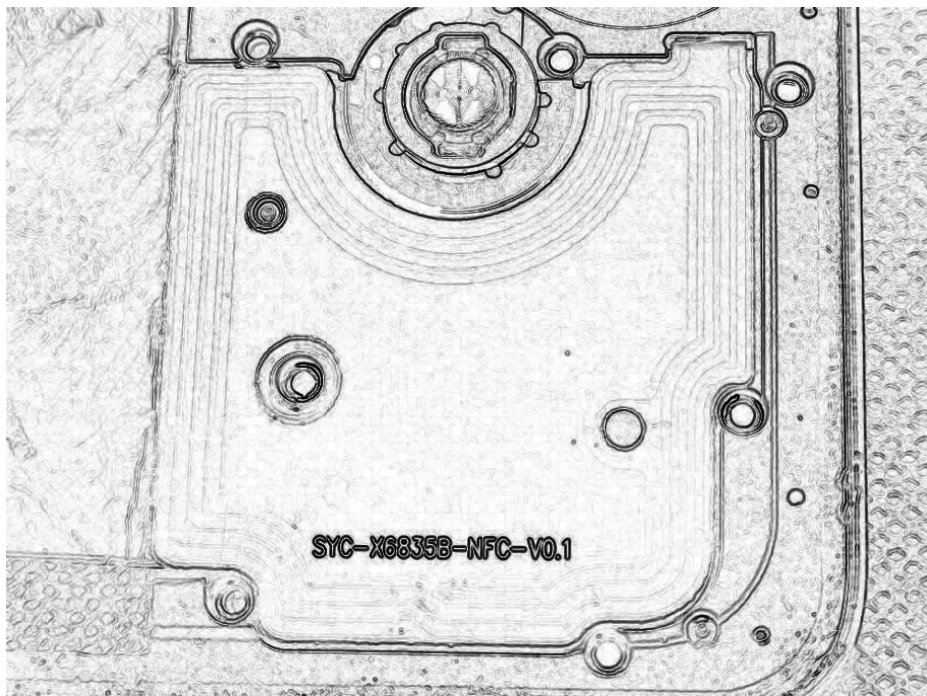
**WWAN Main Antenna**



**WWAN Anx Antenna**



**NFC Antenna**



PREPARED BY	CHECKEDBY	APPROVAL BY	S.R.NO	
	Yao.hu		DATE:	2022/12/09