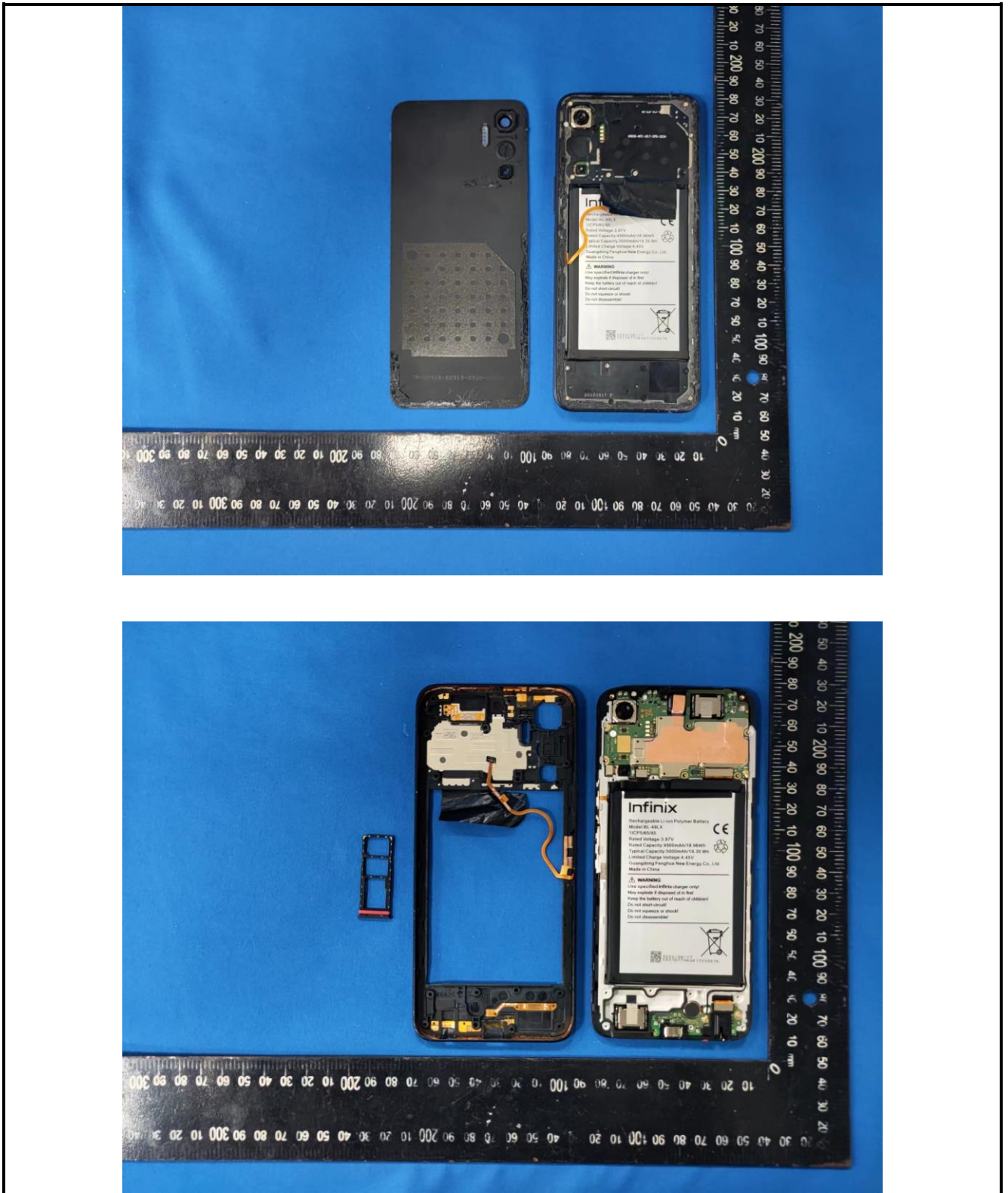
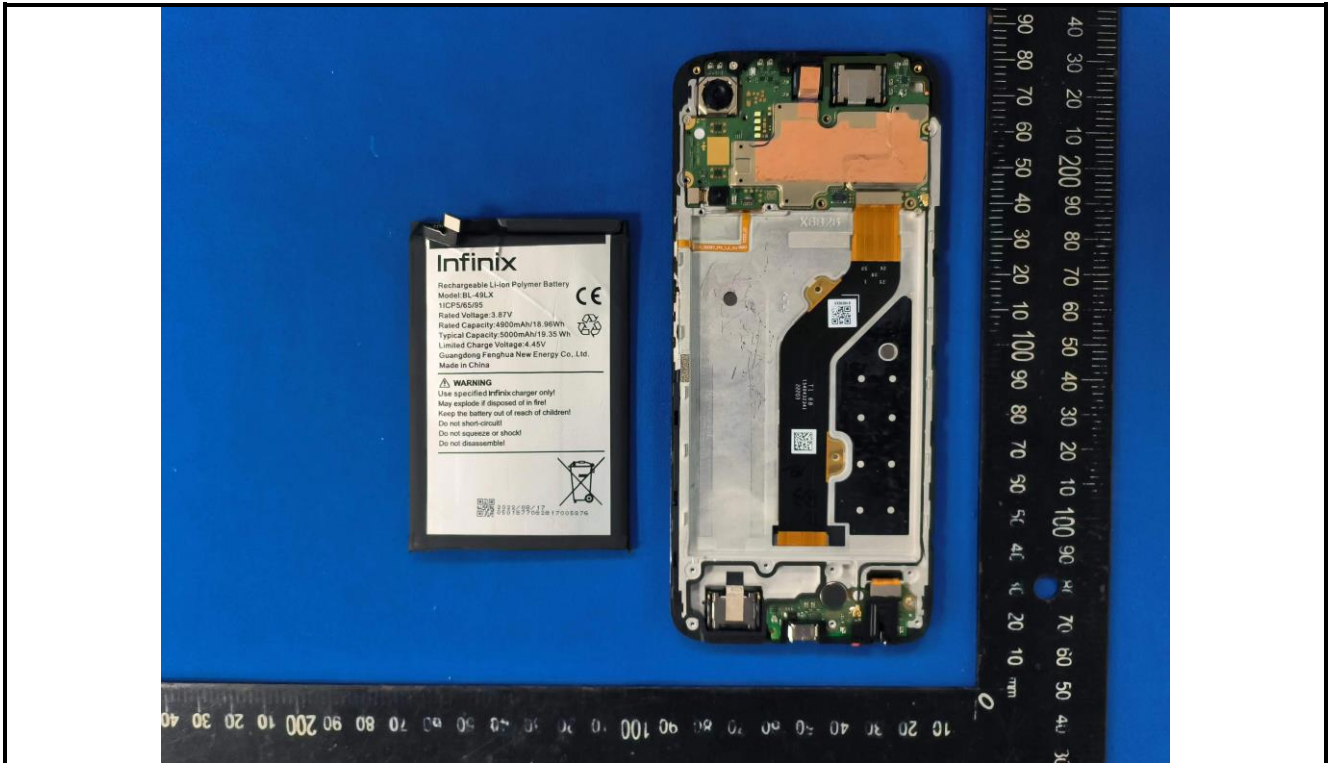


EUT Internal Photos





Infinix
Rechargeable Li-ion Polymer Battery
Model:BL-49LX
11CP5/65/95
Rated Voltage:3.87V
Rated Capacity:4900mAh/18.96Wh
Typical Capacity:5000mAh/19.35 Wh
Limited Charge Voltage:4.45V
Guangdong Fenghua New Energy Co., Ltd.
Made in China

WARNING
Use specified Infinix charger only!
May explode if disposed of in fire!
Keep the battery out of reach of children!
Do not short-circuit!
Do not squeeze or shock!
Do not disassemble!

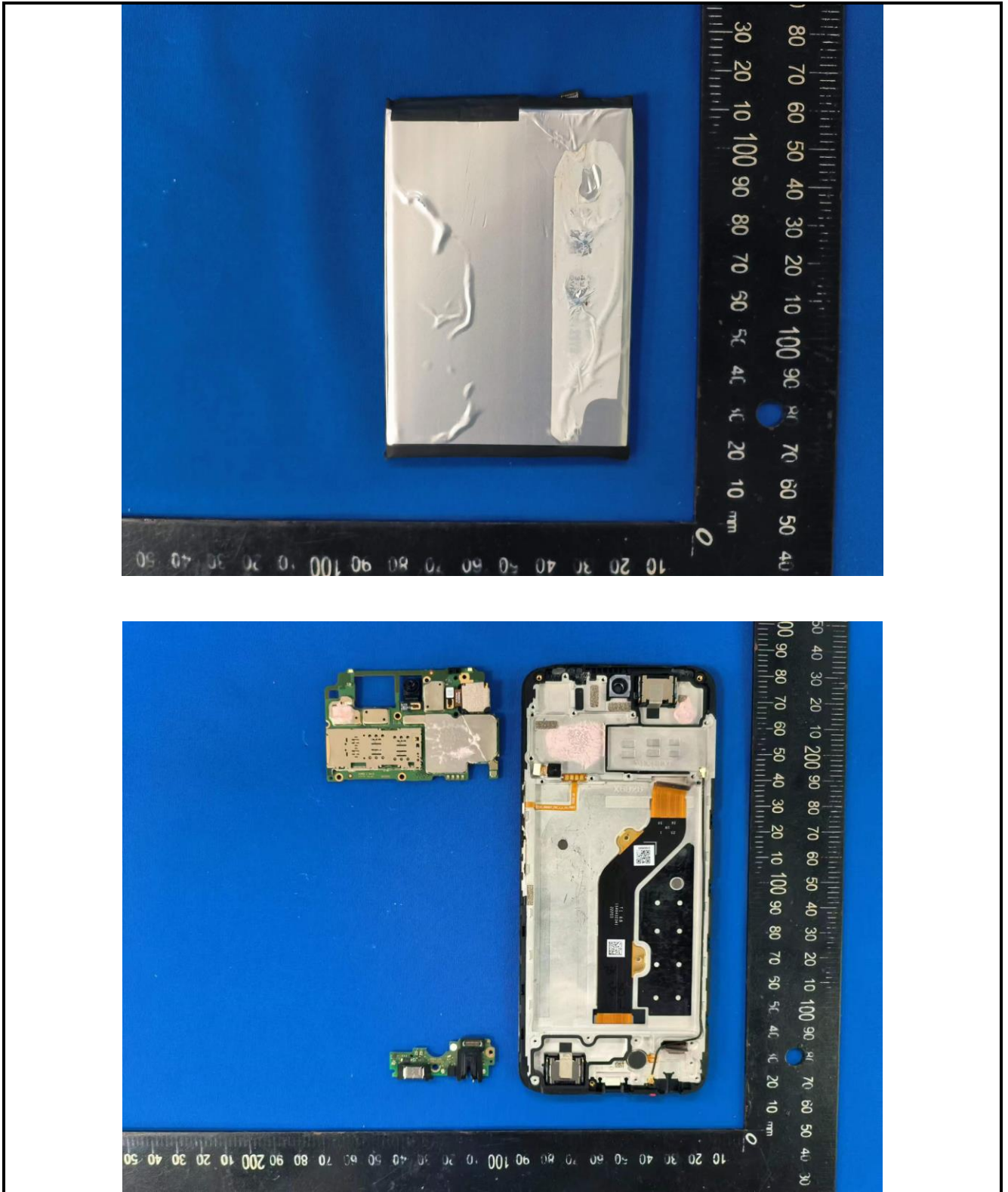
2022/05/17
0501877082817005876

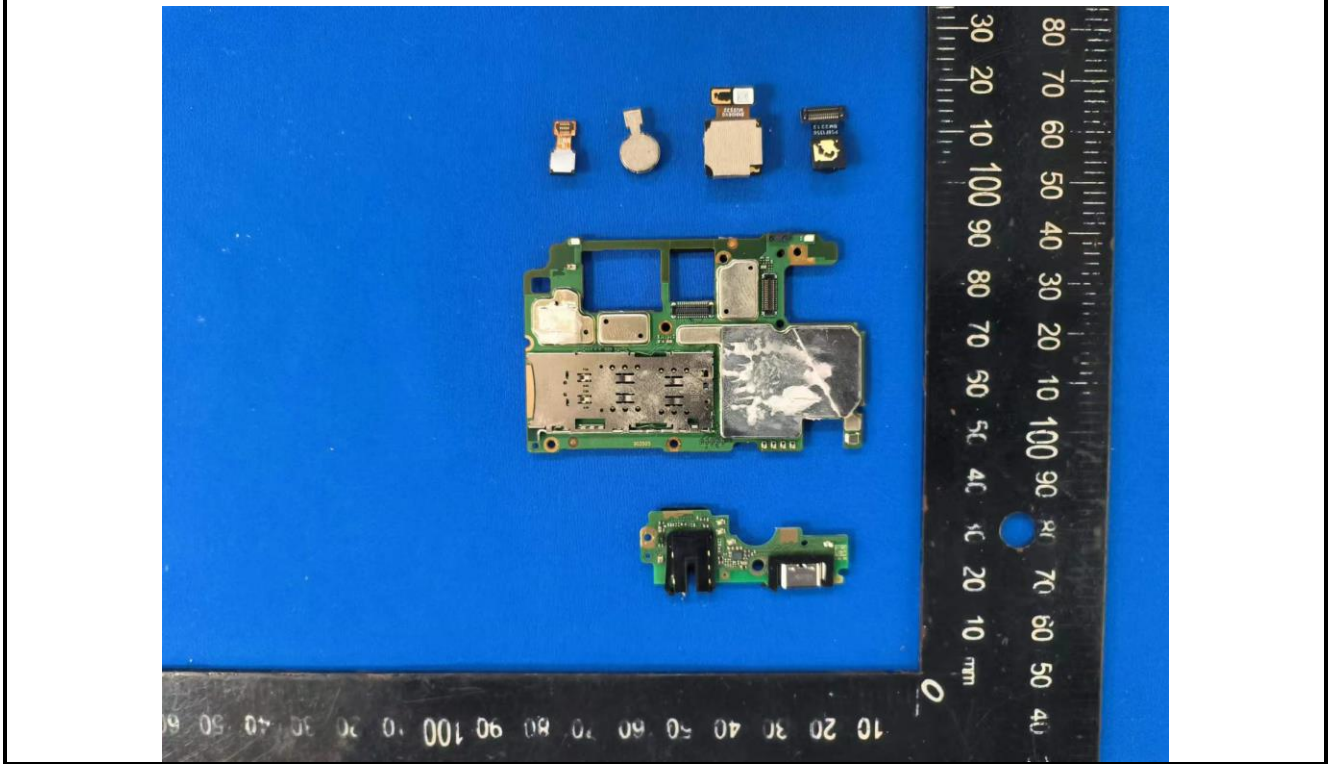
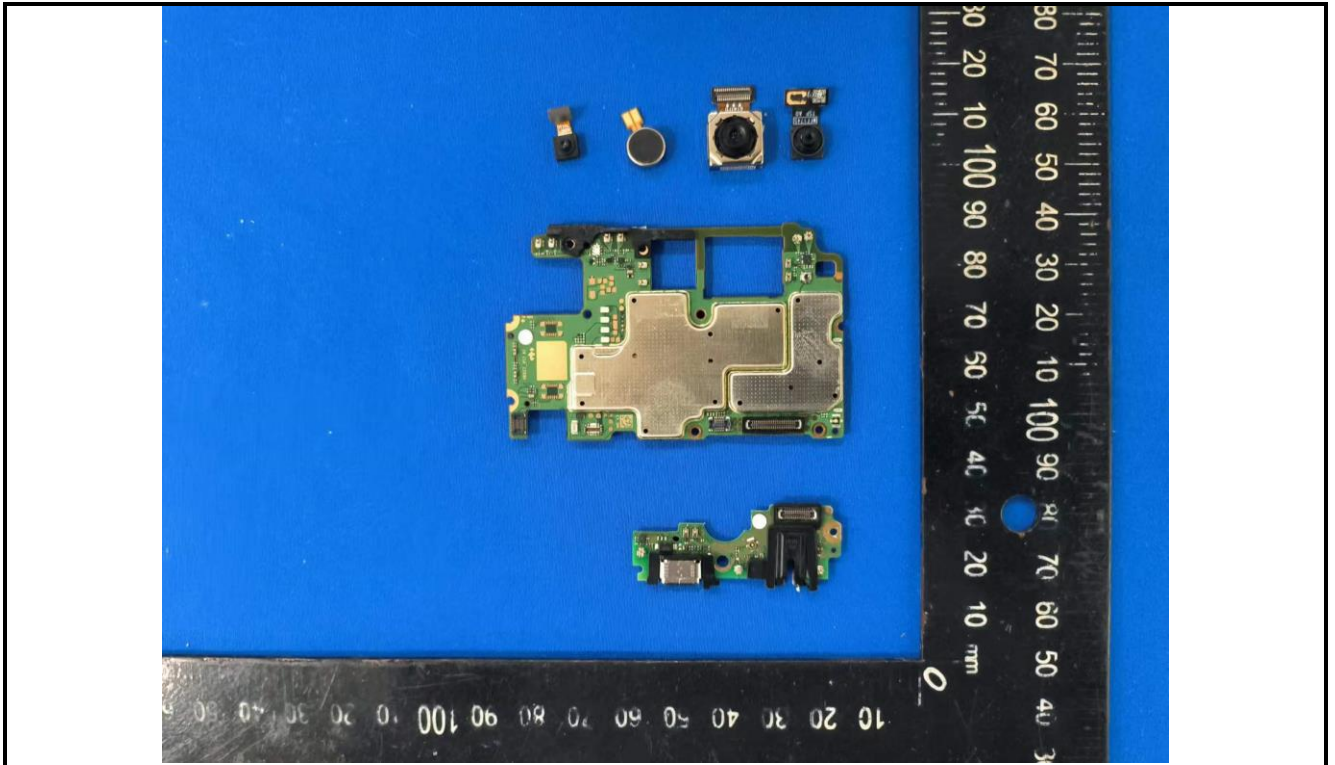


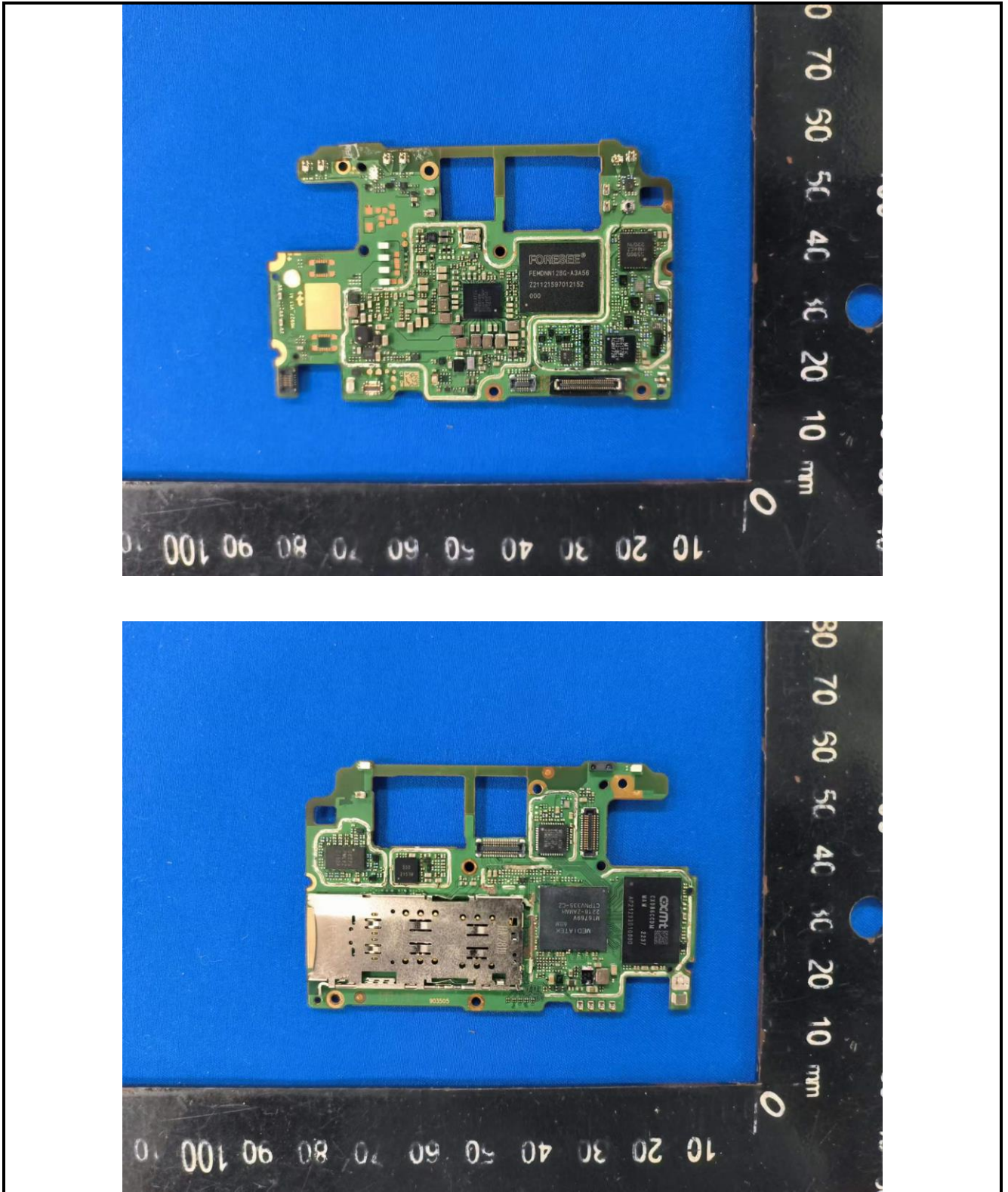
Infinix
Rechargeable Li-ion Polymer Battery
Model:BL-49LX
11CP5/65/95
Rated Voltage:3.87V
Rated Capacity:4900mAh/18.96Wh
Typical Capacity:5000mAh/19.35 Wh
Limited Charge Voltage:4.45V
Guangdong Fenghua New Energy Co., Ltd.
Made in China

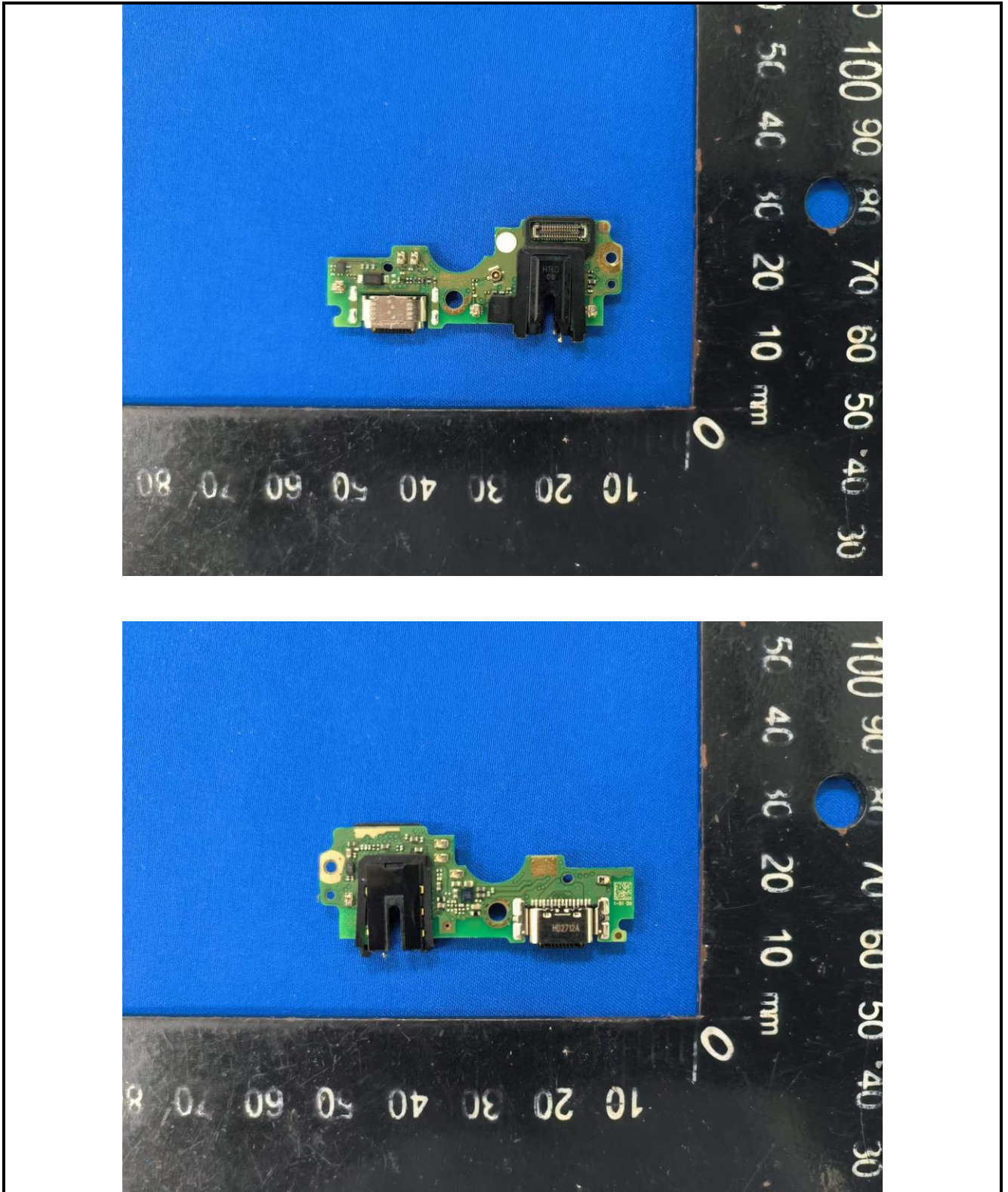
WARNING
Use specified Infinix charger only!
May explode if disposed of in fire!
Keep the battery out of reach of children!
Do not short-circuit!
Do not squeeze or shock!
Do not disassemble!

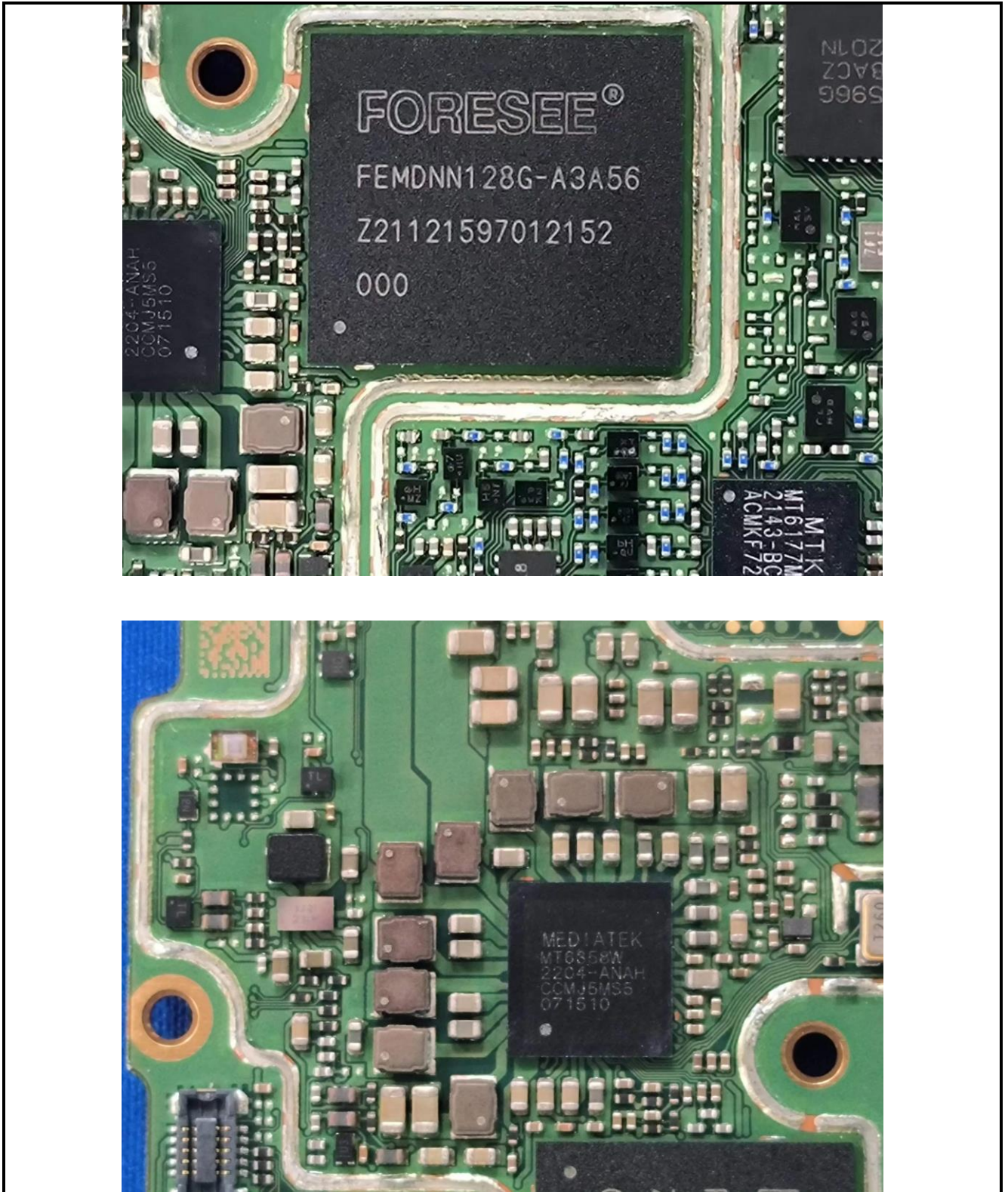
2022/05/17
0501877082817005876

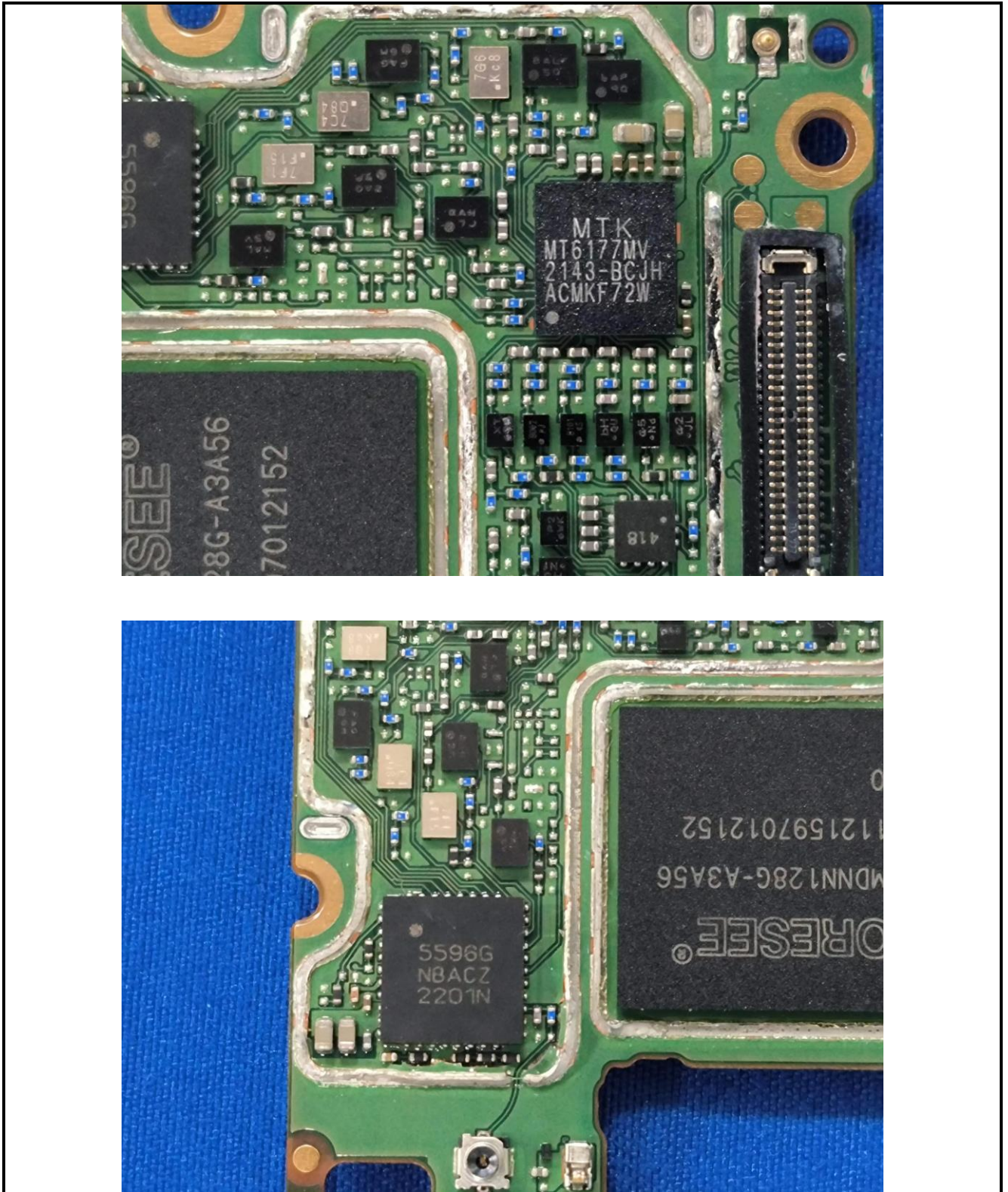


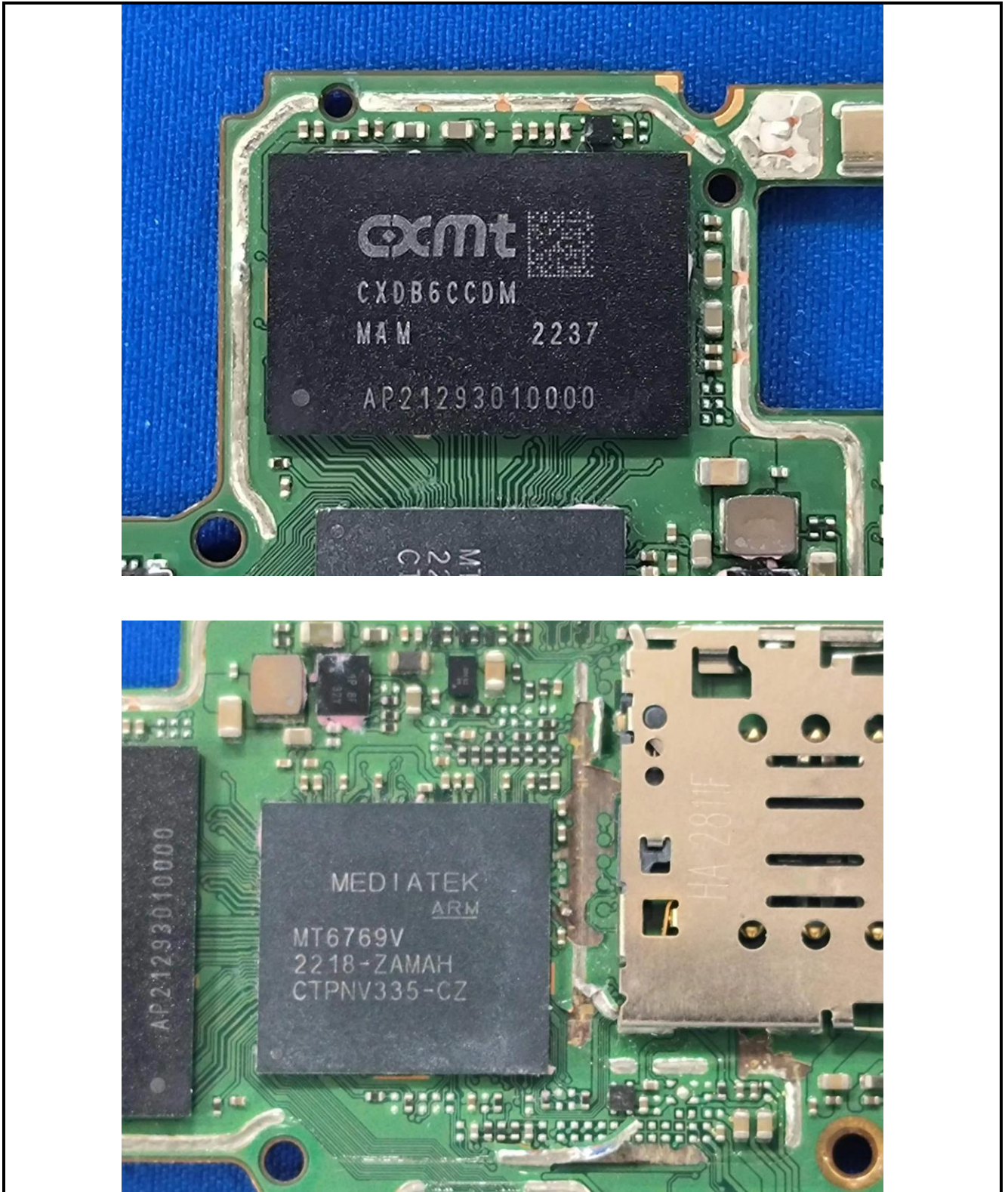


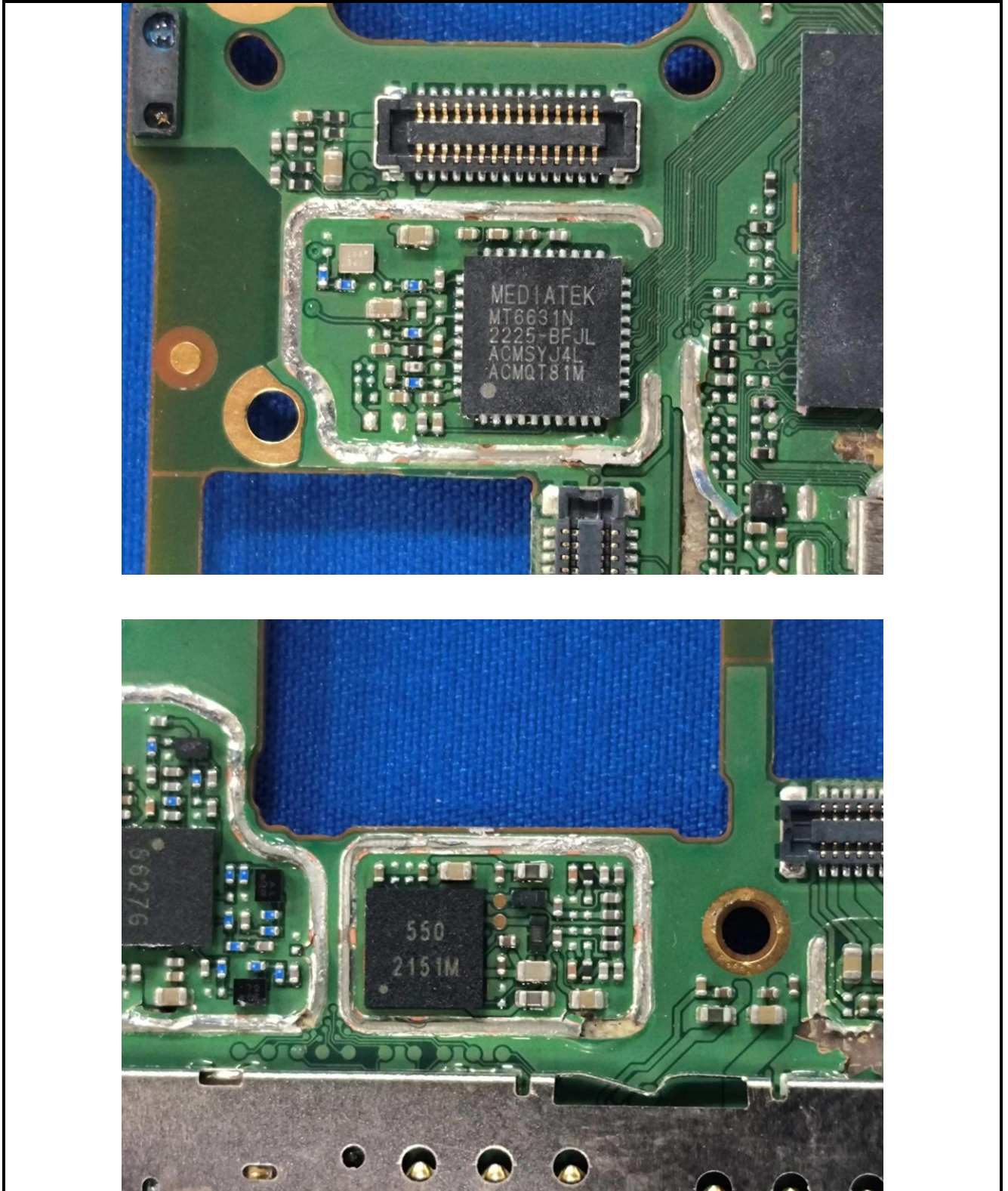


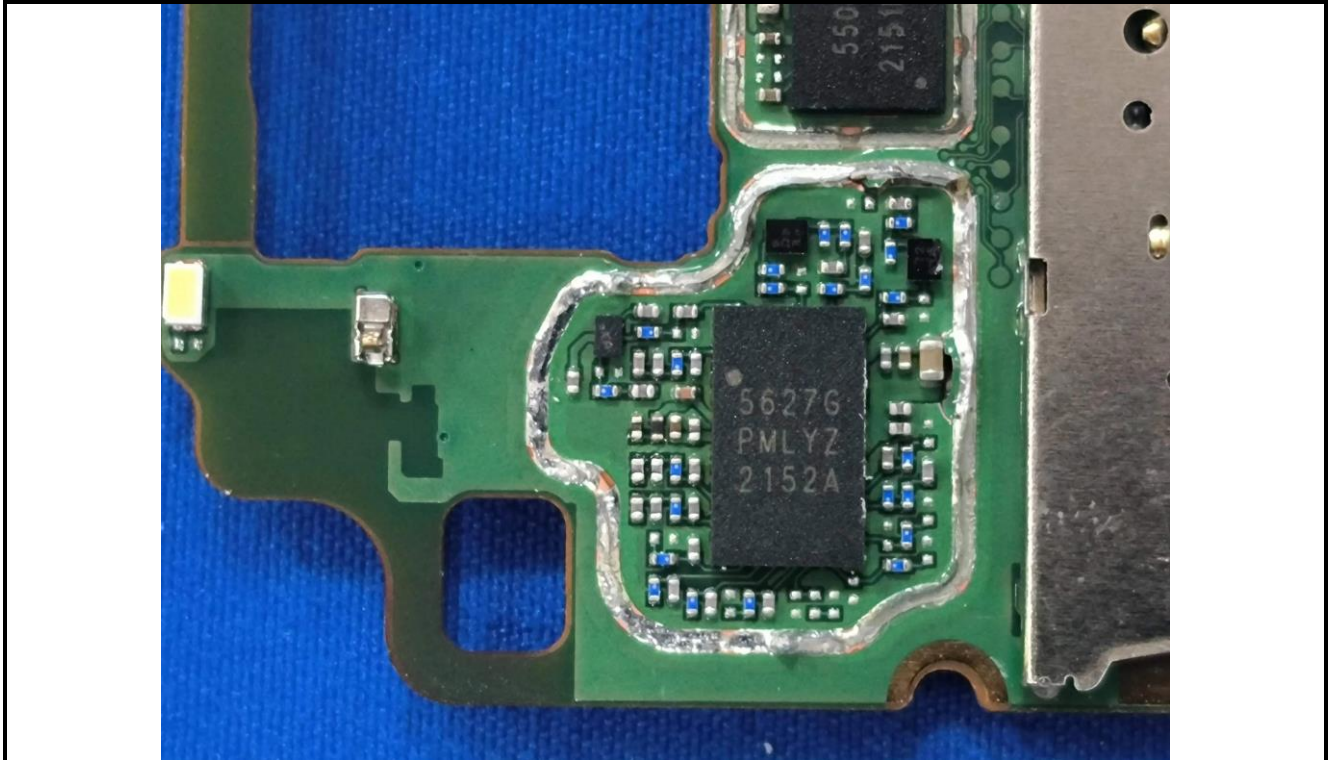




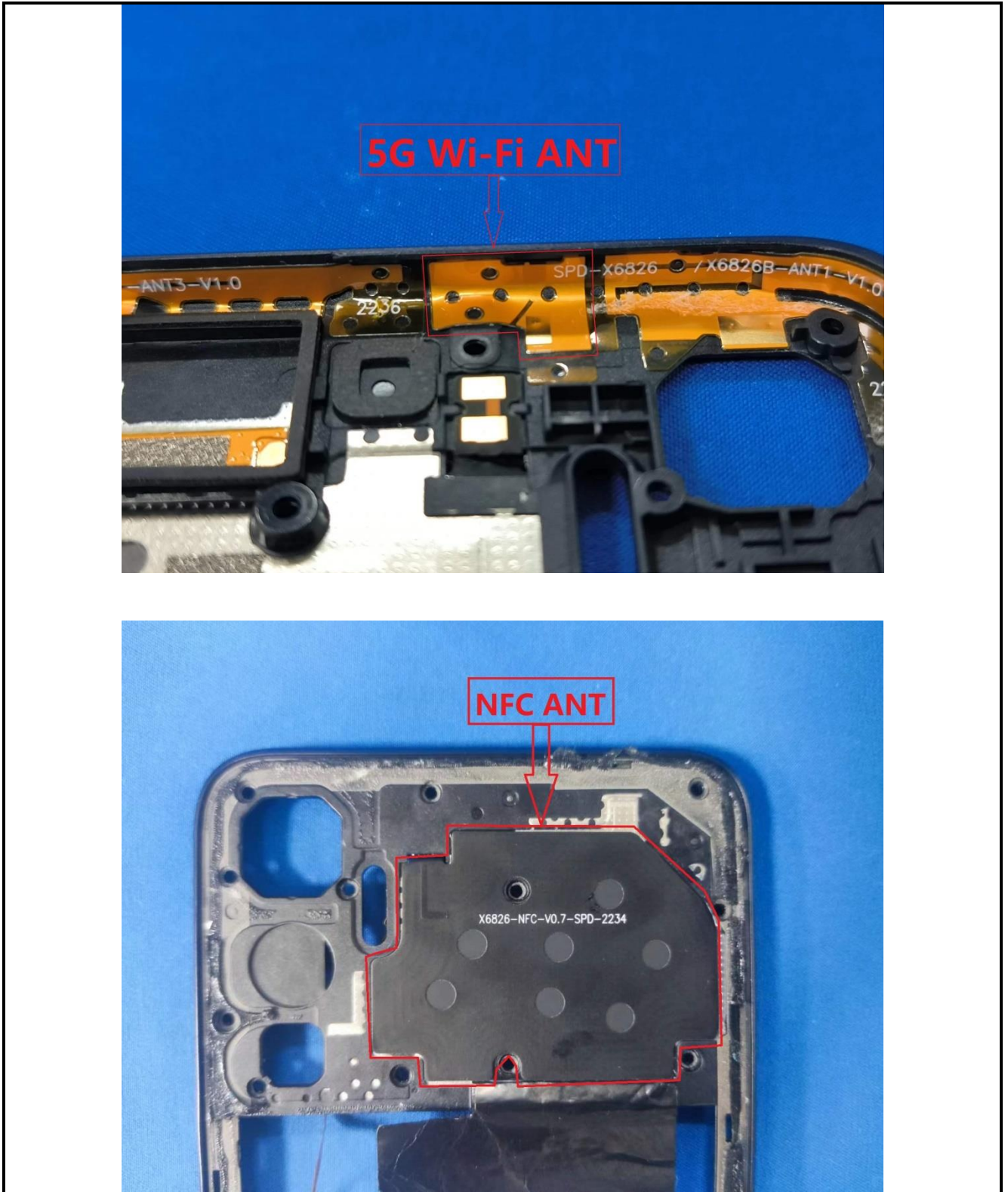












-----End-----