

Feature

- ※ High gain
- ※ Omani-directional
- ※ Wide bandwidth

Main Antenna

Application

※GSM 850/900/DCS/PCS WCDMA BAND1/ BAND2/BAND4/BAND5/ BAND8
LTE B1/B2/B3/ B4/B5 /B7/ B8/B20/ B28/ B38/B40/B41
communication applications

项目	Name and address of the antenna manufacturer	Model number of the antenna
X6716	Name: Huizhou Speed Wireless technology Co.,Ltd. Address: NO.138 ShangXia Section,Hi-tech District of East river, Huizhou,Guangdong P.R. China	MAIN:X6525-ANT1-V1.0 3IN1:X6525-ANT3&4-V1.0 DIV:X6525-ANT2-V1.1

TYPE	
------	--

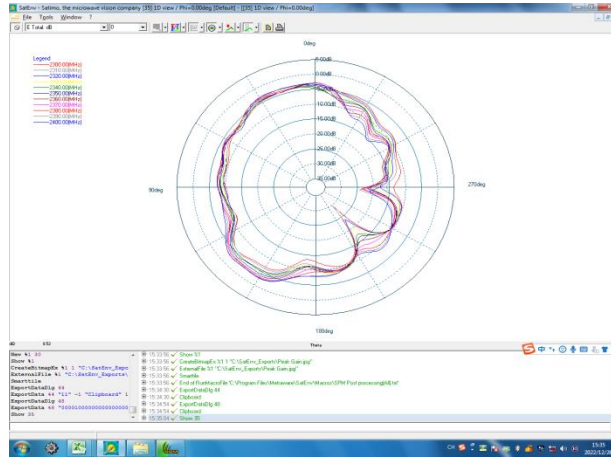
Transmitter Frequency	GSM 850/WCDMA B5/LTE B5: 824 - 849 MHz
	GSM 900/WCDMA B8/LTE B8: 880 - 915 MHz
	DCS /WCDMA B4/LTE B3/B4/B66: 1710 - 1785 MHz
	PCS/WCDMA B2/LTE B2:1850-1910MHz
	WCDMA B1/LTE B1: 1920 - 1980MHz
	LTE B7:2496-2565MHz
	LTE B40:2300-2400MHz
	LTE B38/B41:2565-2645MHz
	LTE B20:832-862MHz
	LTE B28:710-755MHz
Receiver Frequency	GSM 850/WCDMA B5/LTE B5: 869 - 894 MHz
	GSM 900/WCDMA B8/LTE B8: 925 - 960 MHz
	DCS/LTE B3: 1805 - 1880 MHz
	WCDMA 4/LTE B4: 2110-2155 MHz
	PCS/WCDMA B2/LTE B2:1930-1990MHz
	WCDMA B1/LTE B1/B66: 2110 - 2170MHz
	LTE B7:2620-2690MHz
	LTE B40:2300-2400MHz
	LTE B38/41:2565-2645MHz
	LTE B20:791-821MHz
LTE B28:758-803MHz	
RF-Output Power (E.I.R.P)	GSM850/900: 32+/-2dBm
	DCS/PCS: 30+/-2dBm
	LTE B1/B2/B3/ B4/B5 /B7/B8/B12/B17/B20/B28/B38/B40/B41/B66: 23+/-2dBm
	WCDMA B1/B2/B4/B5/ B8: 23+/-2dBm
Main Antenna Gain (Peak Gain)	GSM 850/WCDMA B5/LTE B5: -5.0
	GSM 900/WCDMA B8/LTE B8: -5.2
	DCS/WCDMA B4/ LTE B3/B4: -1.4
	PCS/WCDMA B2/LTE B2: -1.3
	WCDMA B1/LTE B1: -1.4
	LTE B7/B38/B41: -0.2
	LTE B40: -0.8
	LTE B20:-6.4
LTE B28:-3.8	
3in1 Antenna Gain (Peak Gain)	GPS: -3.1
	WIFI 2.4G: -3.2 5G: -3.1
Type of Modulation	

※ Antenna Gain

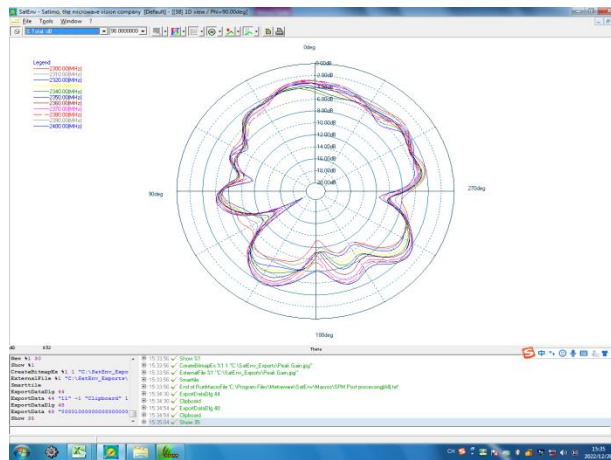
GSM850 / WCDMA B5 / LTE B5/B20 Theta=90deg

✧ Antenna Gain

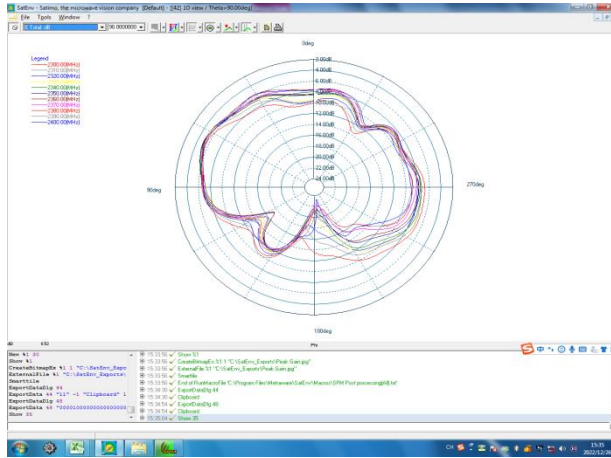
Main Antenna



LTE B40 Phi=0deg



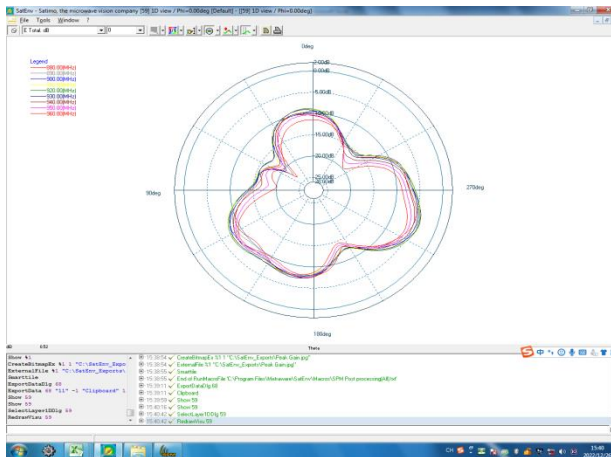
LTE B40 Phi=90deg



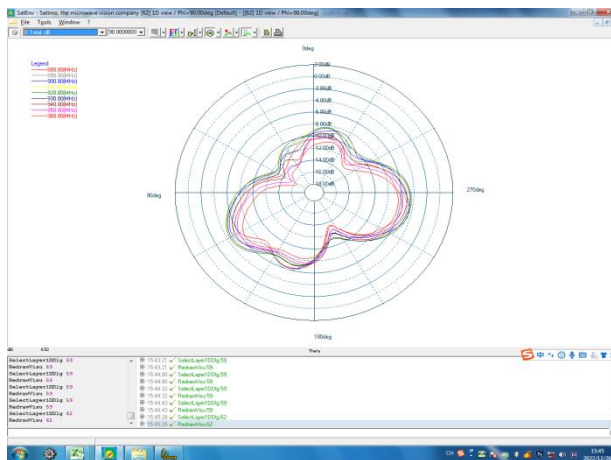
LTE B40 Theta=90deg

※ Antenna Gain

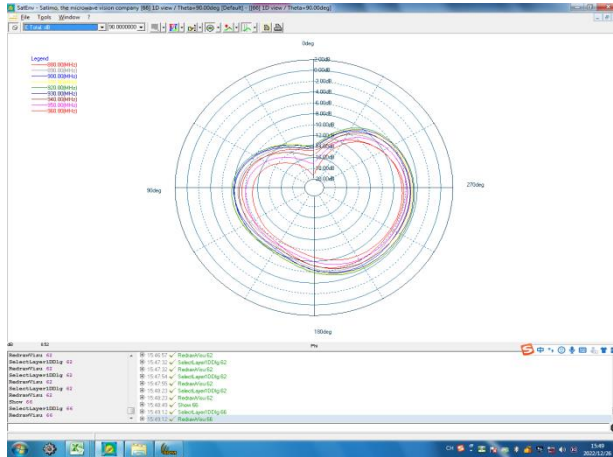
Main Antenna



GSM900 / WCDMA B8 / LTE B8 Phi=0deg



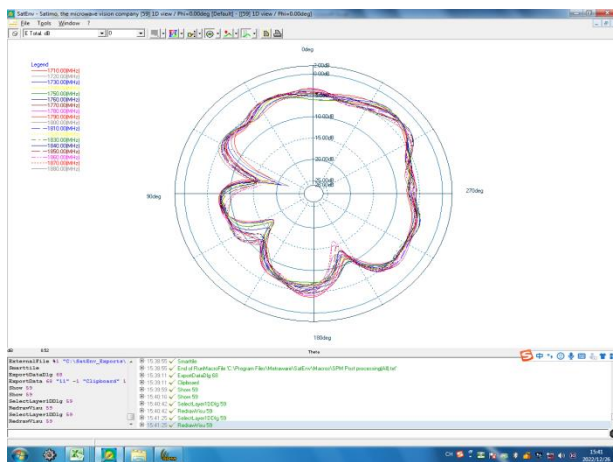
GSM900 / WCDMA B8 / LTE B8 Phi=90deg



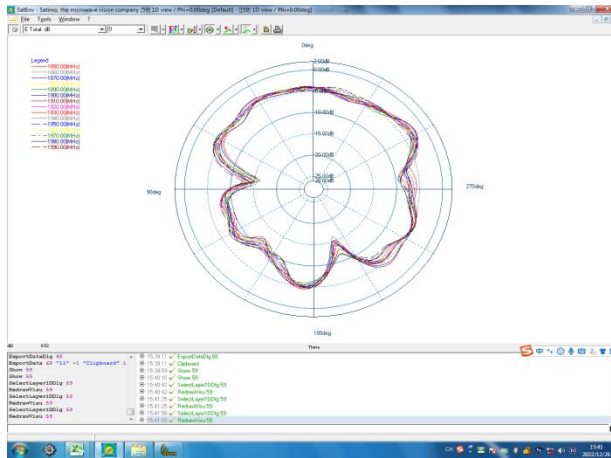
GSM900 / WCDMA B8 / LTE B8 Theta=90deg

✂ Antenna Gain

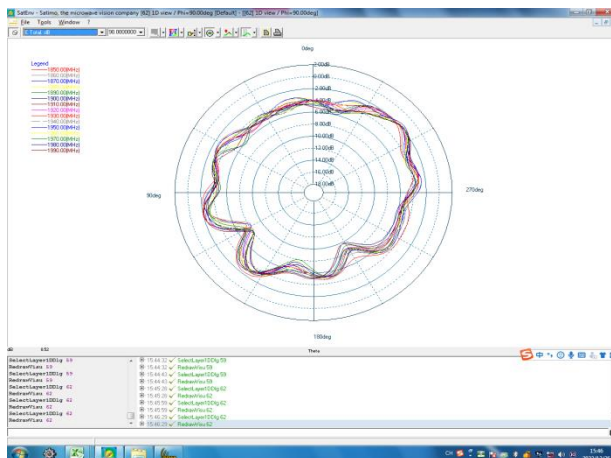
Main Antenna



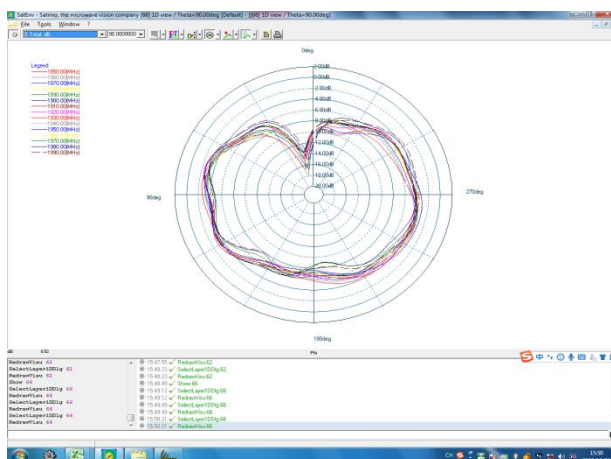
DCS1800/ LTE B3 Phi=0deg



PCS1900/ WCDMA B2/ LTE B2 Phi=0deg



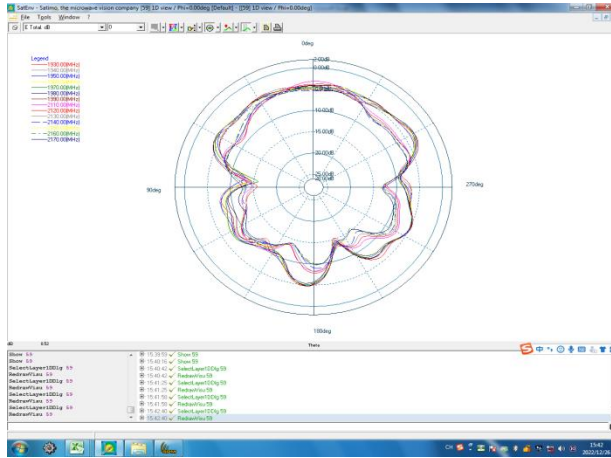
CS1900/ WCDMA B2/ LTE B2 Phi=90deg



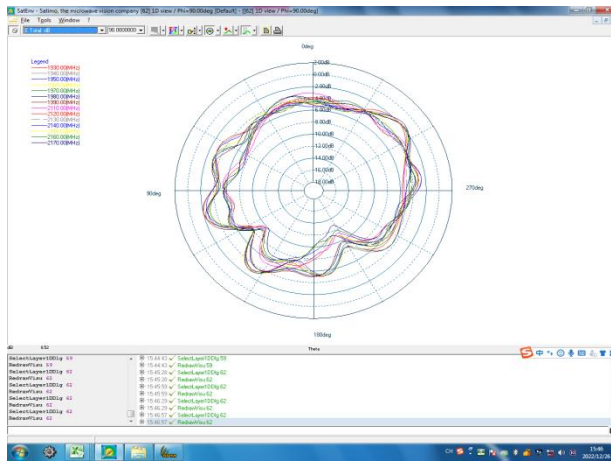
CS1900/ WCDMA B2/ LTE B2 Theta=90deg

✧ Antenna Gain

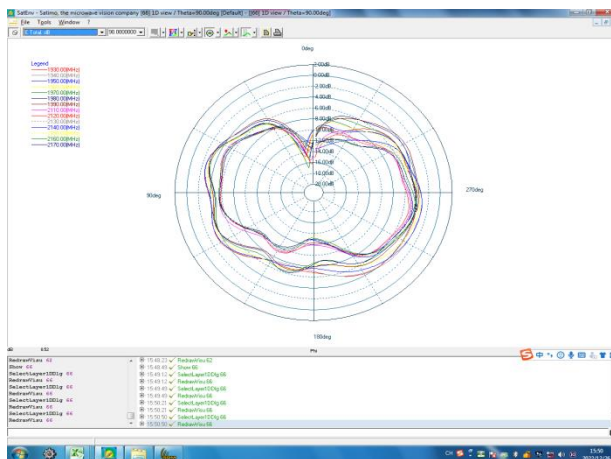
Main Antenna



WCDMA B1/ LTE B1 Phi=0deg



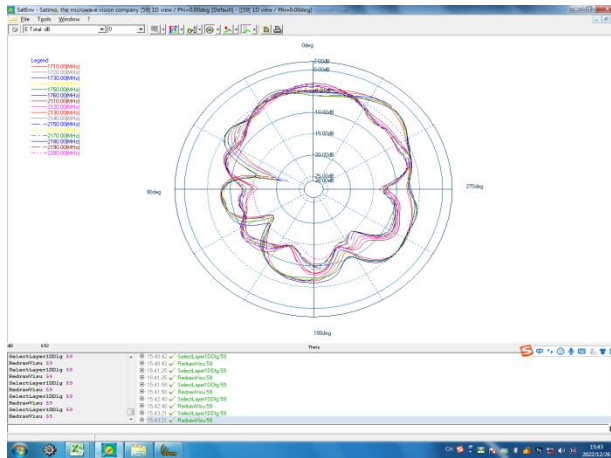
WCDMA B1/ LTE B1 Phi=90deg



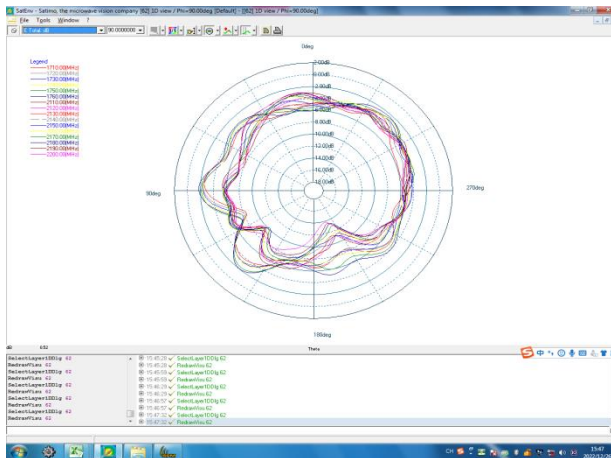
WCDMA B1/ LTE B1 Theta=90deg

✧ Antenna Gain

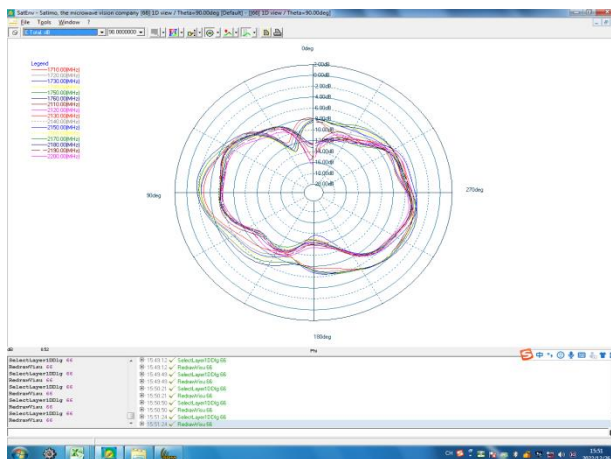
Main Antenna



WCDMA B4/ LTE B4 Phi=0deg



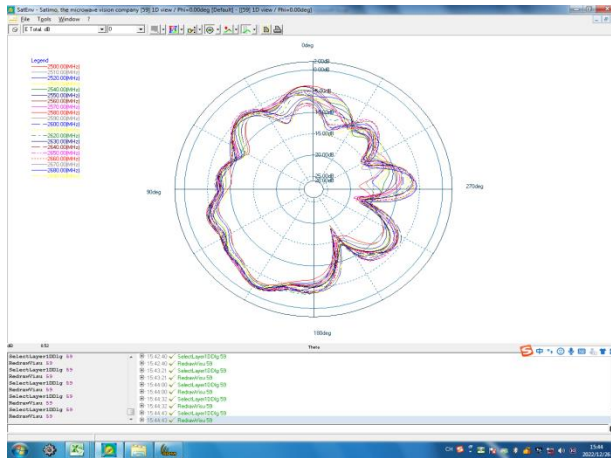
WCDMA B4/ LTE B4 Phi=90deg



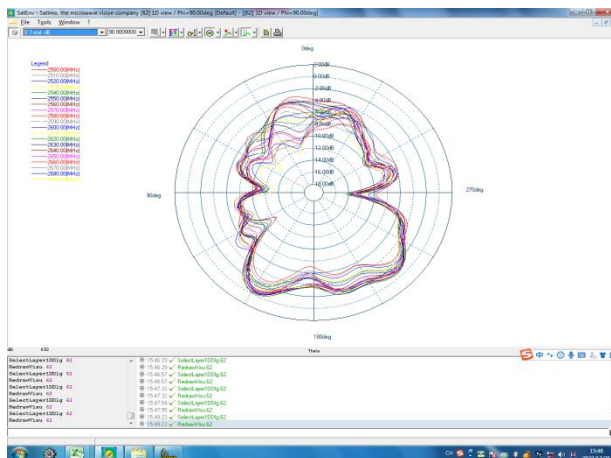
WCDMA B4/ LTE B4 Theta=90deg

✂ Antenna Gain

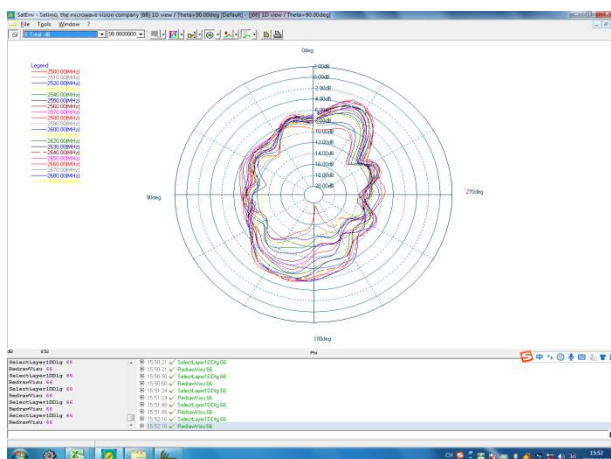
Main Antenna



LTE B7/38/41 Phi=0deg



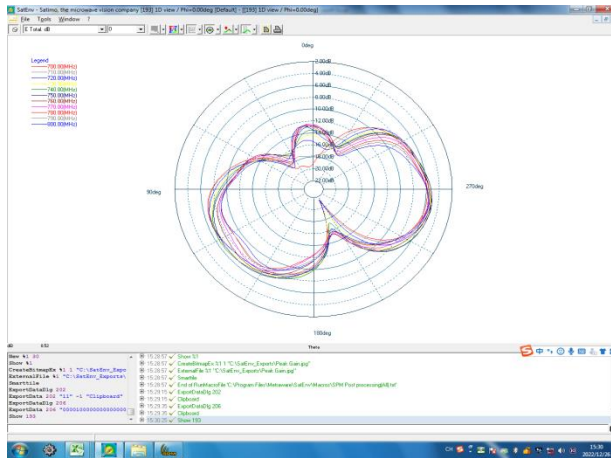
LTE B7/38/41 Phi=90deg



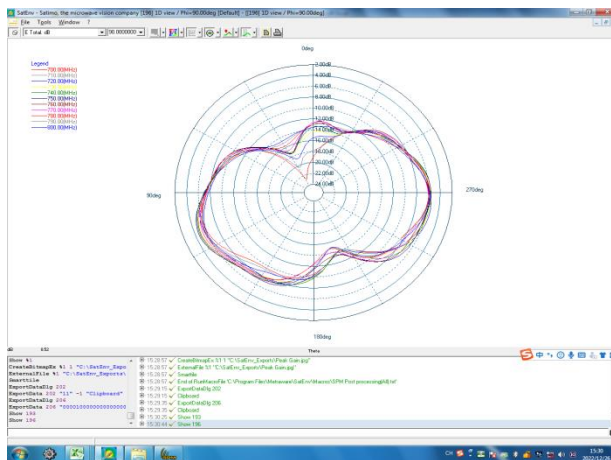
LTE B7/38/41 Theta=90deg

※ Antenna Gain

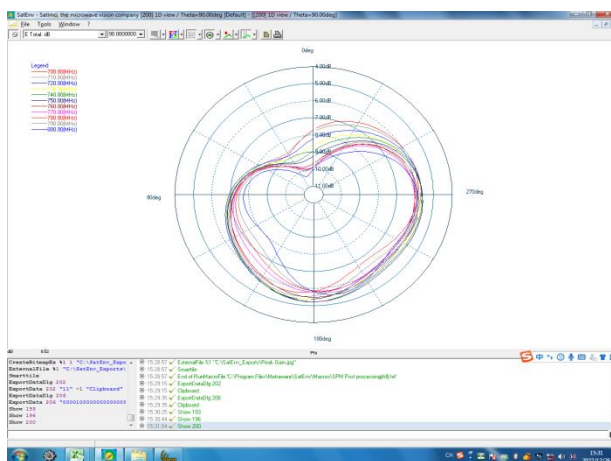
Main Antenna



LTE B28 Phi=0deg



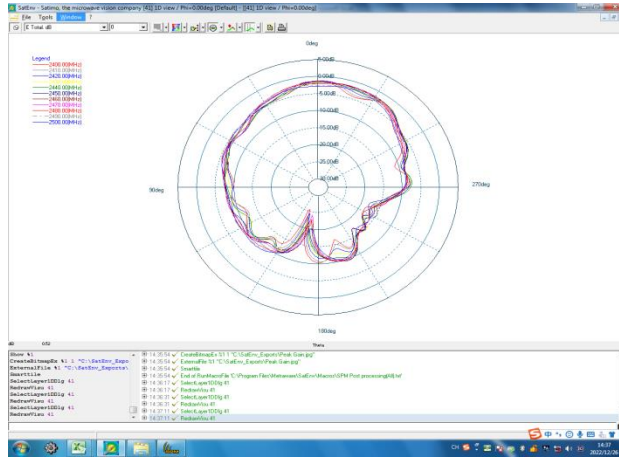
LTE B28 Phi=90deg



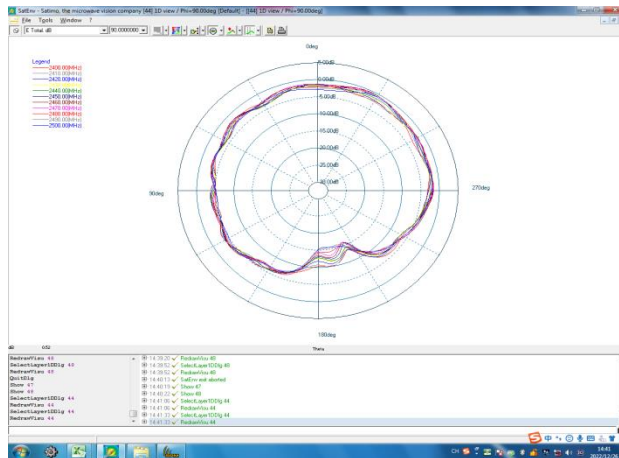
LTE B28 Theta=90deg

✧ Antenna Gain

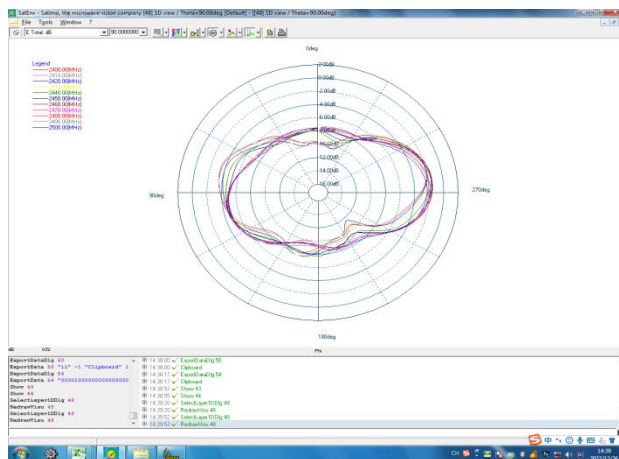
3in1 Antenna



2.4G WIFI&BT Phi=0deg



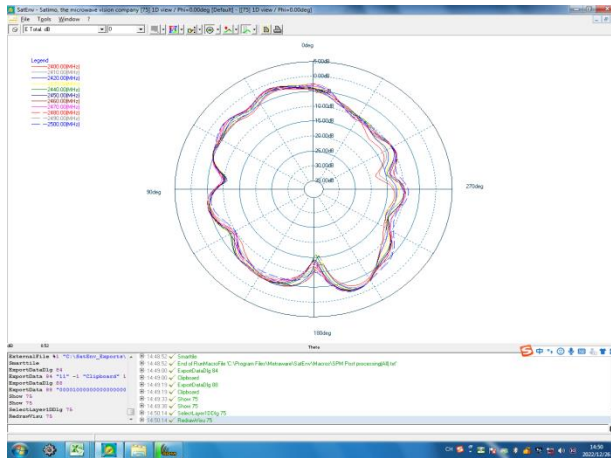
2.4G WIFI&BT Phi=90deg



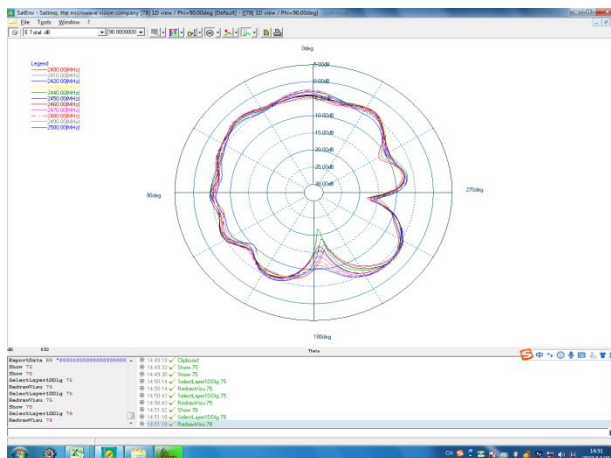
2.4G WIFI&BT Theta=90deg

✧ Antenna Gain

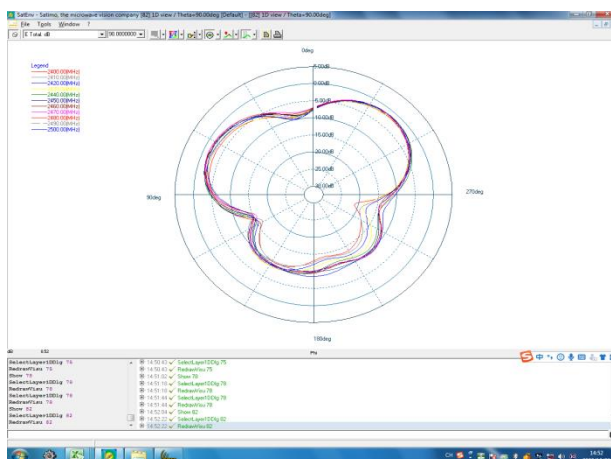
3in1 Antenna



2.4G WIFI&BT Phi=0deg



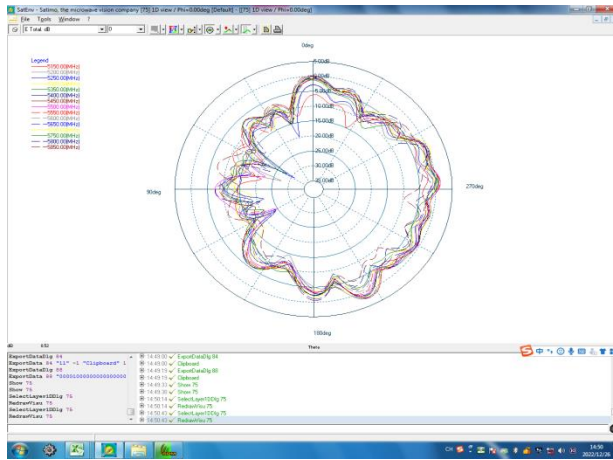
2.4G WIFI&BT Phi=90deg



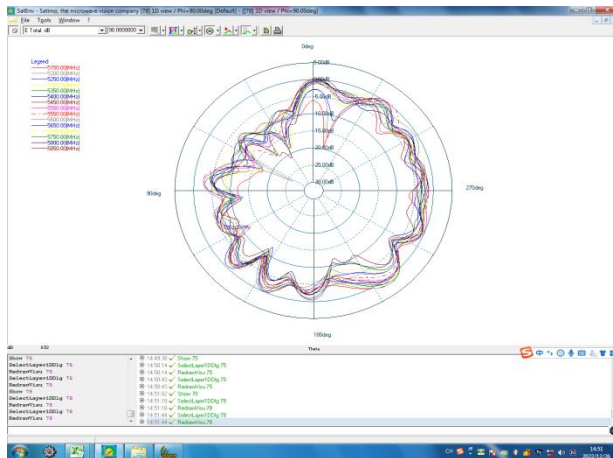
2.4G WIFI&BT Theta=90deg

※ Antenna Gain

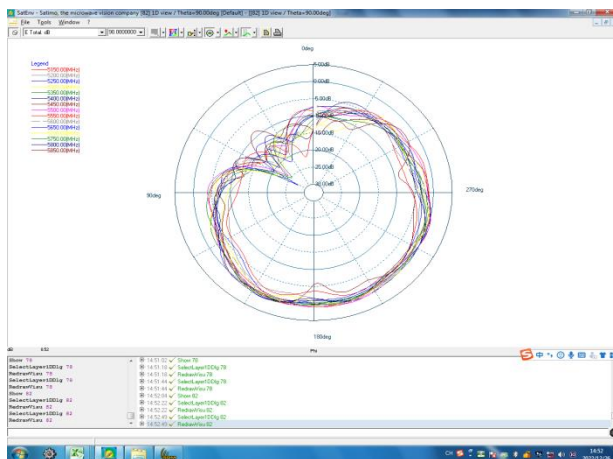
WiFi Antenna (ANT3)



5G WIFI Phi=0deg



5G WIFI Phi=90deg



5G WIFI Theta=90deg

PREPARED BY	CHECKEDBY	APPROVAL BY	S.R.NO	
	Wenxing.jiang		DATE:	2022/12/27