	Annex A: System Check
	Tested Model : X6511E
	Report Number: WSCT-A2LA-R&E211100558A-S AR

I. RESULTS

<u>TYPE</u>	<u>BAND</u>	<u>PARAMETERS</u>
Validation	CW835	<u>Measurement 1: Validation Plane with Dipole device position on Middle Channel in CW mode</u>
Validation	CW835	<u>Measurement 2: Validation Plane with Dipole device position on Middle Channel in CW mode</u>
Validation	CW1800	<u>Measurement 3: Validation Plane with Dipole device position on Middle Channel in CW mode</u>
Validation	CW1800	<u>Measurement 4: Validation Plane with Dipole device position on Middle Channel in CW mode</u>
Validation	CW1900	<u>Measurement 5: Validation Plane with Dipole device position on Middle Channel in CW mode</u>
Validation	CW1900	<u>Measurement 6: Validation Plane with Dipole device position on Middle Channel in CW mode</u>
Validation	CW2450	<u>Measurement 7: Validation Plane with Dipole device position on Middle Channel in CW mode</u>
Validation	CW2450	<u>Measurement 8: Validation Plane with Dipole device position on Middle Channel in CW mode</u>
Validation	CW260	<u>Measurement 9: Validation Plane with Dipole device position on Middle Channel in CW mode</u>
Validation	CW2600	<u>Measurement 10: Validation Plane with Dipole device position on Middle Channel in CW mode</u>

MEASUREMENT 1

BODY

Type: Validation measurement (Complete)

Date of measurement: 28/11/2021

Measurement duration: 11 minutes 54 seconds

A. Experimental conditions.

<u>Area Scan</u>	<u>dx=8mm dy=8mm</u>
<u>ZoomScan</u>	<u>5x5x7, dx=8mm dy=8mm</u> <u>dz=5mm, Complete</u>
<u>Phantom</u>	<u>Validation plane</u>
<u>Device Position</u>	<u>Dipole</u>
<u>Band</u>	<u>CW835</u>
<u>Channels</u>	<u>Middle</u>
<u>Signal</u>	<u>CW (Crest factor: 1.0)</u>

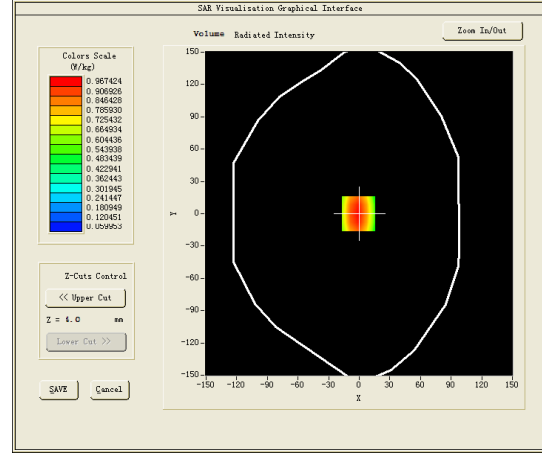
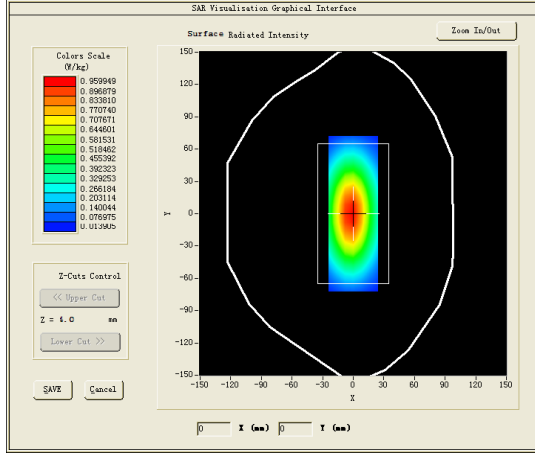
B. SAR Measurement Results

Middle Band SAR (Channel -1):

Frequency (MHz)	835.000000
Relative permittivity (real part)	53.927799
Relative permittivity (imaginary part)	21.281300
Conductivity (S/m)	0.987216
Variation (%)	0.120000

SURFACE SAR

VOLUME SAR

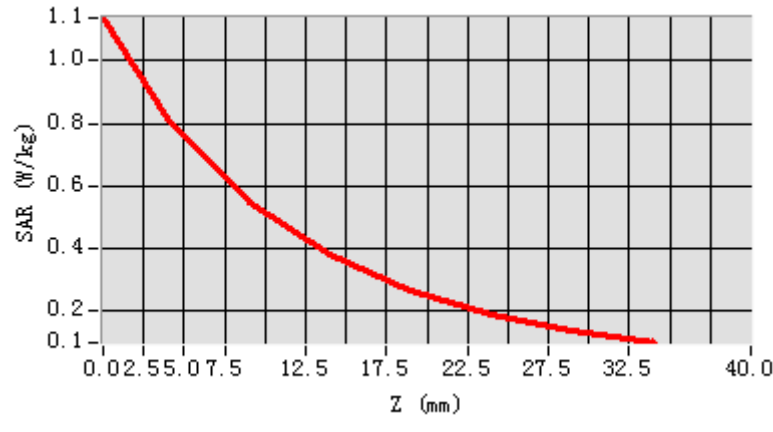


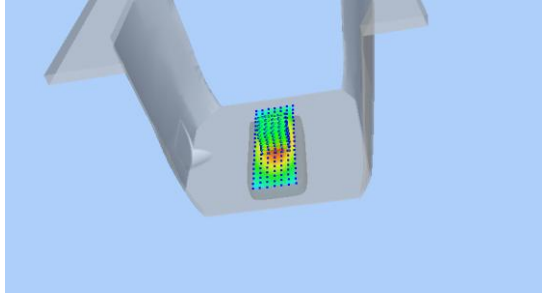
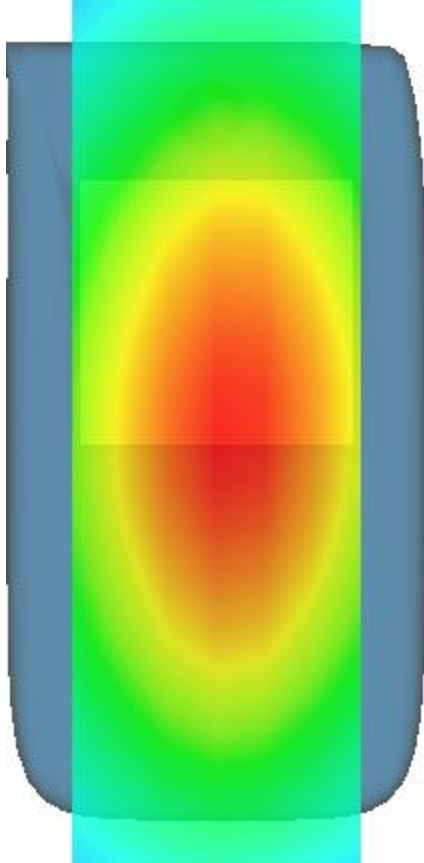
Maximum location: X=-1.00, Y=0.00

SAR Peak: 1.44 W/kg

SAR 10g (W/Kg)	0.644746
SAR 1g (W/Kg)	1.014583

Z (mm)	0.00	4.00	9.00	14.00	19.00	24.00	29.00
SAR (W/Kg)	1.1418	0.9674	0.6426	0.4358	0.2947	0.1989	0.1326



3D screen shot	Hot spot position
	

MEASUREMENT 2

HEAD

Type: Validation measurement (Complete)

Date of measurement: 28/11/2021

Measurement duration: 11 minutes 54 seconds

A. Experimental conditions.

<u>Area Scan</u>	<u>dx=8mm dy=8mm</u>
<u>ZoomScan</u>	<u>5x5x7, dx=8mm dy=8mm</u> <u>dz=5mm, Complete</u>
<u>Phantom</u>	<u>Validation plane</u>
<u>Device Position</u>	<u>Dipole</u>
<u>Band</u>	<u>CW835</u>
<u>Channels</u>	<u>Middle</u>
<u>Signal</u>	<u>CW (Crest factor: 1.0)</u>

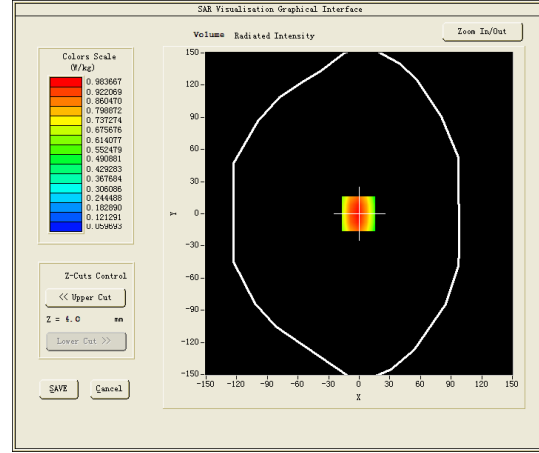
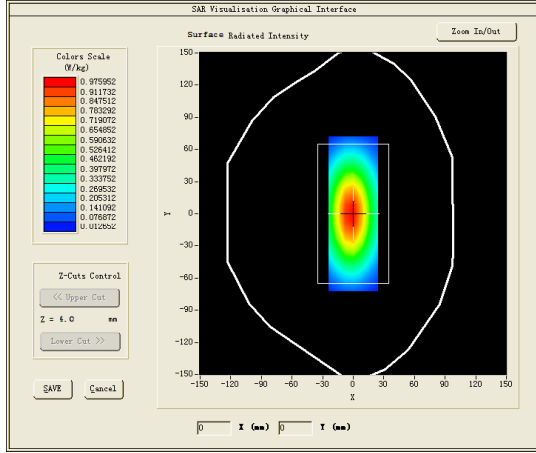
B. SAR Measurement Results

Middle Band SAR (Channel -1):

Frequency (MHz)	835.000000
Relative permittivity (real part)	40.502102
Relative permittivity (imaginary part)	19.566299
Conductivity (S/m)	0.907659
Variation (%)	0.380000

SURFACE SAR

VOLUME SAR



Maximum location: X=-3.00, Y=-5.00

SAR Peak: 1.37 W/kg

SAR 10g (W/Kg)	0.615004
SAR 1g (W/Kg)	0.970049